



# Marathon County ELEVATE GRANT

Empowering Lives Through Vocational  
Assessment and Training and Education

Leah Griesbach

Grant Coordinator

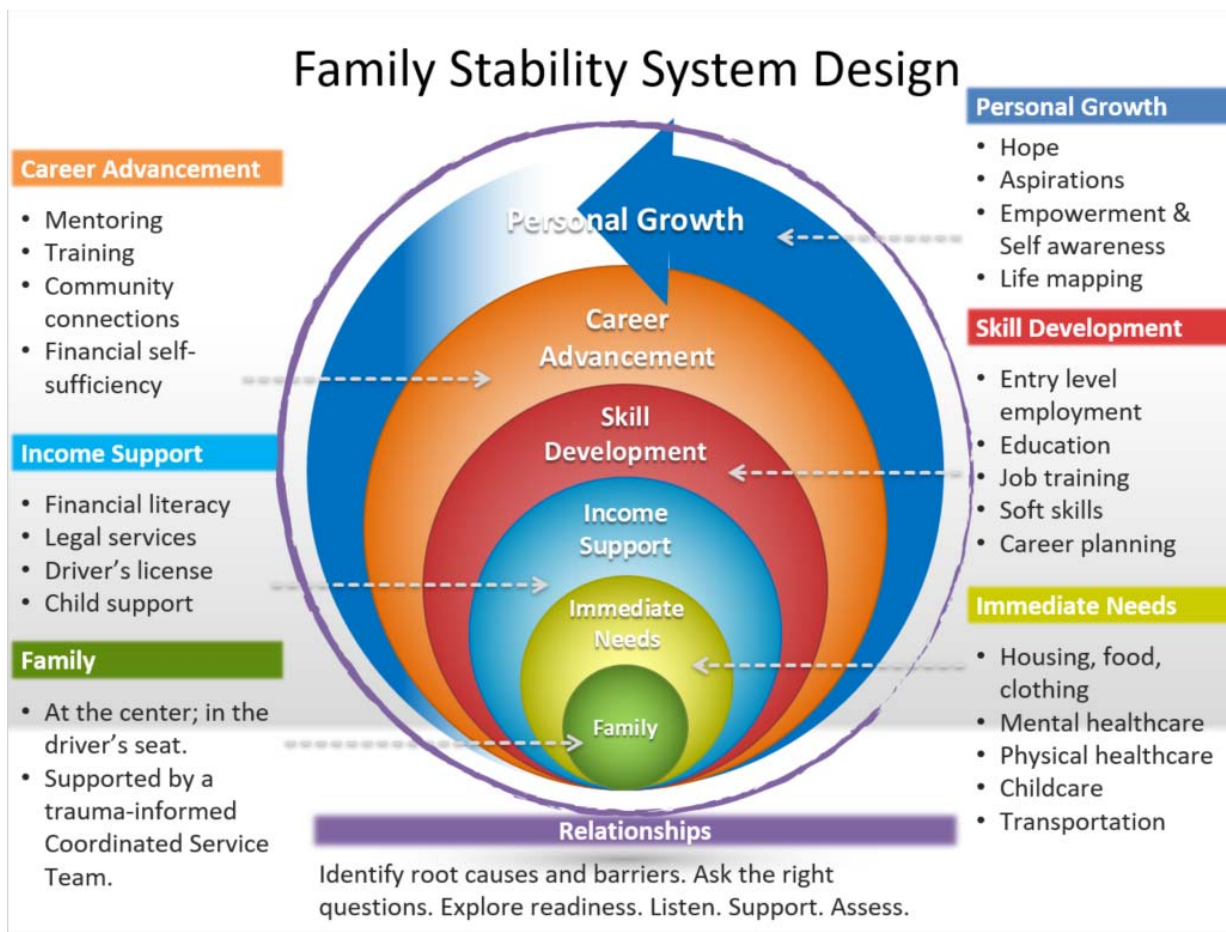


## Child Support Systems Change: History & Background

- Child Support Noncustodial Parent Demonstration Grant
  - Focused solely on employment and improving relationships with Noncustodial parents
- Supporting Parenting Supporting Kids (SPSK)
  - Started with Brown and Kenosha Counties, and also in 7 other states across the country
  - Addition of Enhanced Case Management, fatherhood and parenting activities, and child support state debt reduction and order adjustment
- Five County Demonstration Project (ELEVATE)
  - Brown, Kenosha, Racine, Wood, and Marathon Counties



# Family Stability System Design



# ELEVATE Focuses on Providing Four Core Services

- **Enhanced Case Management**

- Modifying Orders when Appropriate
- Additional Enhanced Support Services

- ▶ **Parenting Education & Services**

- ▶ Assessment of Parenting Needs & Interests
- ▶ Providing Opportunities for Learning

- **Employment Services**

- Assessment of noncustodial parent's Employment Circumstances
- Job Searching & Acquiring Assistance

- ▶ **Enhanced Child Support Services**

- ▶ Expedited Review and Adjust
  - ▶ Streamlined Process – started immediately



# Measures of Success:

## Institute for Research on Poverty

- 1080 participants participant in Pre & Post survey measure success of the ELEVATE model
  - Parameters for survey participation are strict
  - Non-IRP Enrollees are not included, but may still be served
- Number of Grant Program Enrollees
  - Across the span of 5 years the 5 counties target is 2100 enrollees.
  - Marathon County minimum is 337.

## Internal Measures & Current Data

- Successful Dis-Enrollment Criteria
  - A noncustodial parent participant is considered to have “completed” or become an “alumni” if they have gained employment, there is no indication of job loss, and they have made a minimum of three consecutive months of child support payments.
  - We don’t necessarily dis-enroll at this point – although by policy we could.
    - Case-by-Case Parenting Successes
    - Enhanced relationship with Child Support



## Marathon County Numbers as of 9/30/21

- Total Number of Enrollees: 170
  - Survey – 126 total, 68 active; Non-Survey – 44 total, 17 active
- Total Number of Successful Dis-Enrollments : 34 (39% of dis-enrolled)
- Participants in our parenting class: 12
- Percentage of Enrollees we've assisted with parenting: 34.7%
- Percentage of Active Enrollees currently employed: 62.4%
- Number of individuals who have never had a license: 23
- Number of individuals who we have helped regain their driving privileges: 53
- Participant Enrollment Rates:
  - Other counties previous experience: 20%
  - Marathon County Enrollment Rate : 45.33%



---

# Amanda's Story

- Background/Barriers
  - Transportation Barriers
  - Lack of employment experience
- While in ELEVATE
  - Obtained and maintained employment
  - Obtained a driver's license.
- Currently
  - Promoted to Assistant Manager
  - Moved closer to work and out of parent's home
  - Is exercising parenting time
  - Contempt is dismissed

# Craig's Story

- Background/Barriers
  - Incarceration
  - Trying to build relationships with teenage children, learning to co-parent
  - Obtaining employment,
  - Finding reliable transportation
- Currently
  - Completed our parenting class
  - Exercising supervised visitation
- Not everything was perfect
  - Custodial parent and children were hesitant, payments were missed, transportation is an issue, parenting agreements were drawn and not signed
- Outcome – Craig is looking to file for visitation, he has been working consistently, he is able to establish barriers and co-parent and he is able to be an active player in the lives of his children.





# Andrew's Story

- Background/Barriers
  - Large amount of child support cases
  - Inconsistent work history
  - Long, mostly negative relationship with child support
- Currently
  - Working - making payments
  - Utilizing community programs for transportation
  - Much more positive relationship with child support
- Ongoing Current Challenges
  - Job hopping
  - Hesitant to move on from temp agencies

# What's Next?

- This Five County Demonstration Project runs until March 31, 2024.
  - Beyond then?
- In the next two and half years:
  - Expand parenting services
  - Connecting with Marathon County Jail to serve inmates
    - Work release privileges and parenting classes
  - After September 30, 2022, criteria for enrollment becomes more relaxed
    - We can expand our eligible potential enrollees and serve more families
- Expansion of case management position – new position request





# Marathon County FY 2021 Child Support Performance

**Kelly Gross**

Child Support Program Manager





## Child Support Program Basics:

- **Federal Mandates**
  - Fiscal Responsibility
  - Medical Responsibility
- **State Mandates**
  - Partial Services
  - Full Case Management Services



## Child Support Program Basics:

- Referral sources:
  - Economic Support Unit
  - Child Welfare Unit
  - Other States
  - Parent/Guardian Applications
- Who can request services through an application?
  - Parents
  - Guardians
  - Non-Legally Responsible Relatives
  - Others



# Child Support Program Funding Sources:

---

## Mixture of sources

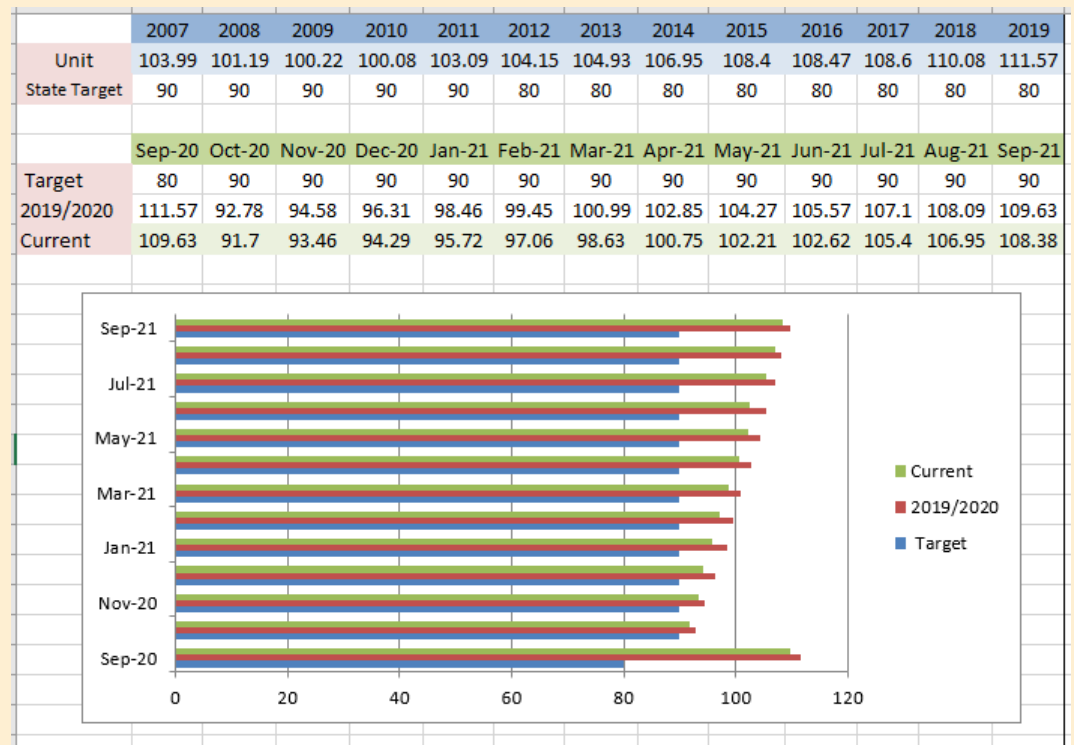
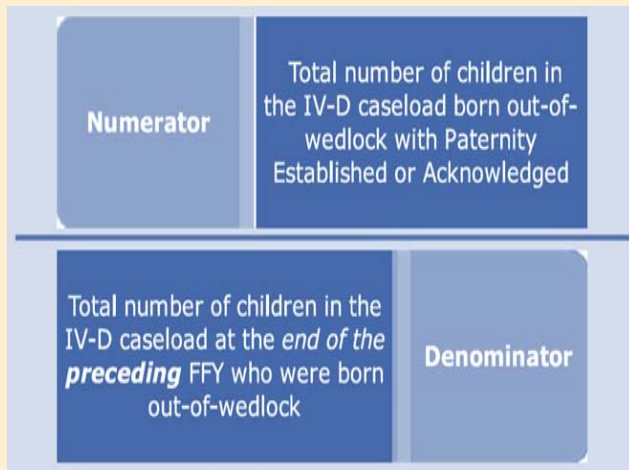
- State Funding
- Federal Funding
- County Levy



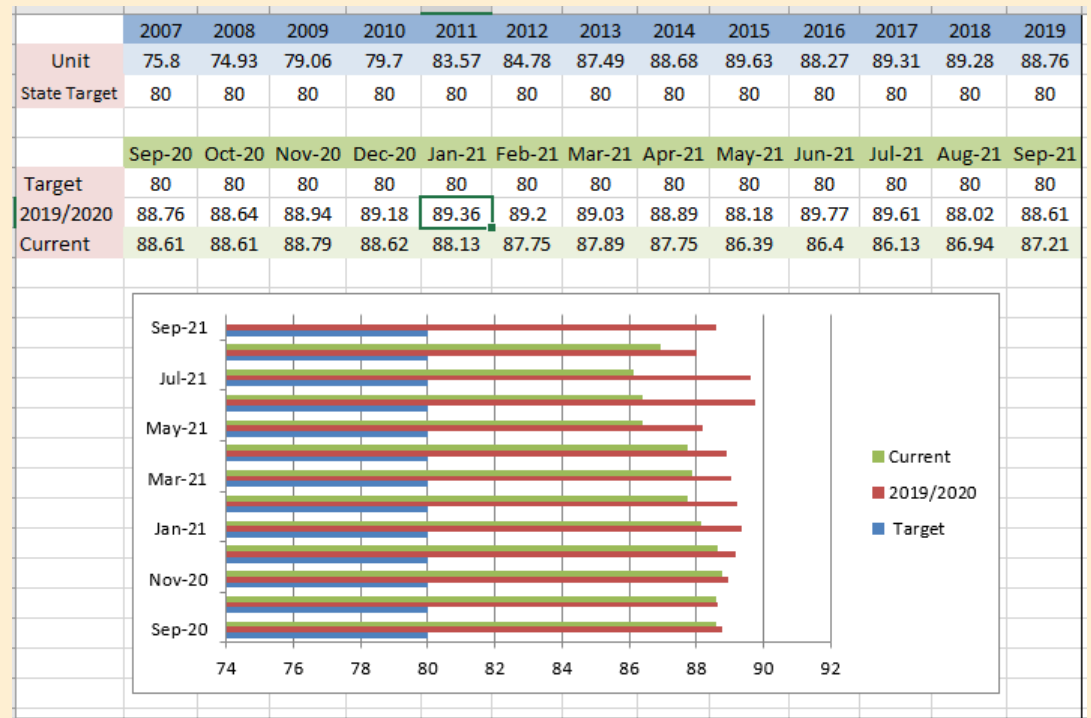
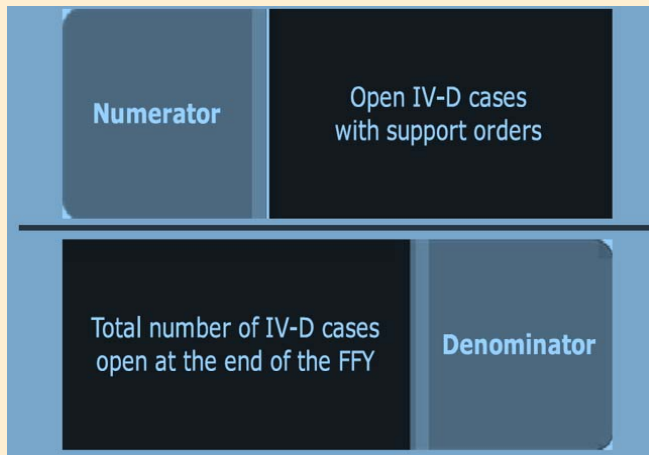
## Comprised of 5 Areas:

- Paternity Establishment
- Court Order Establishment
- Child Support Collections
- Arrears Collections
- Caseload

# Paternity Establishment

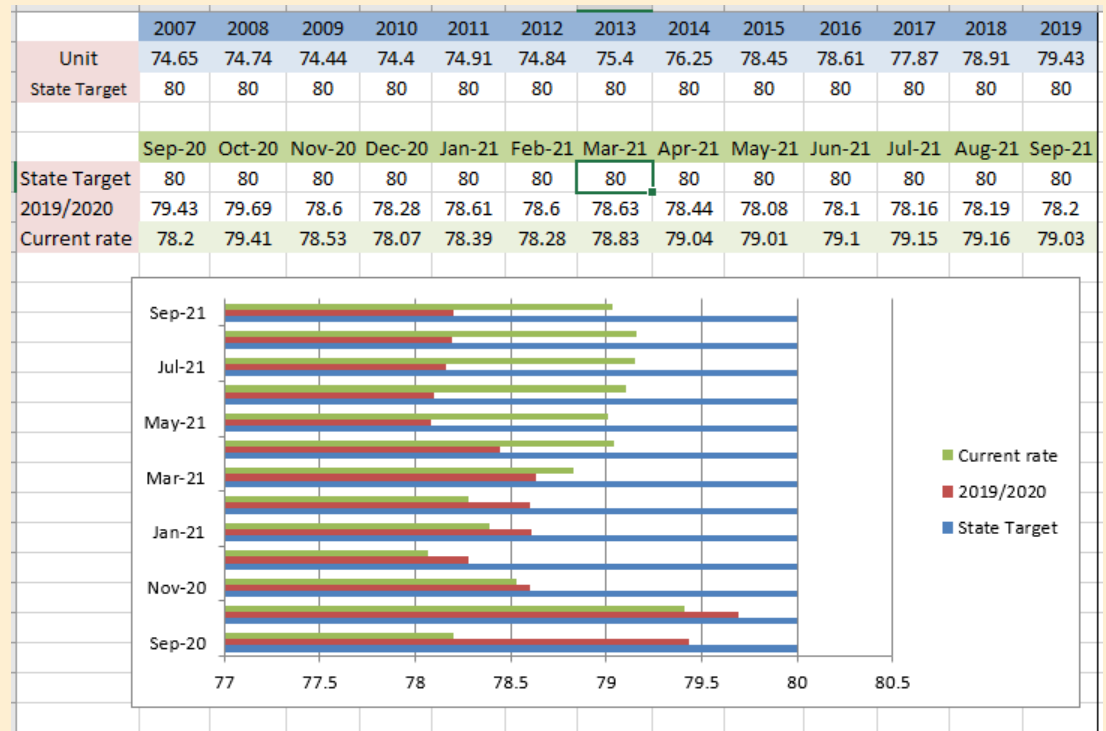
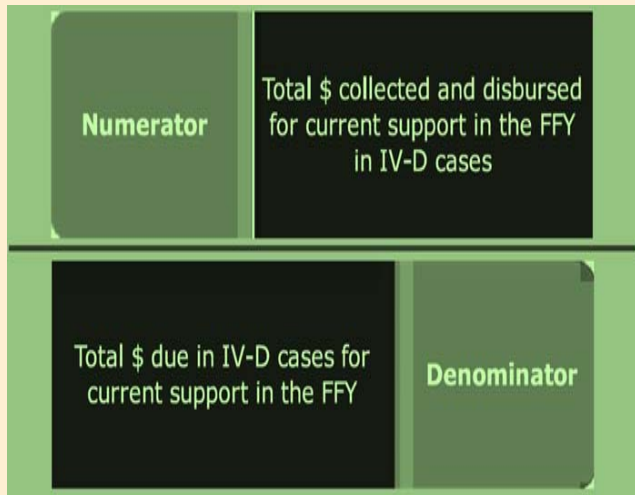


# Court Order Establishment

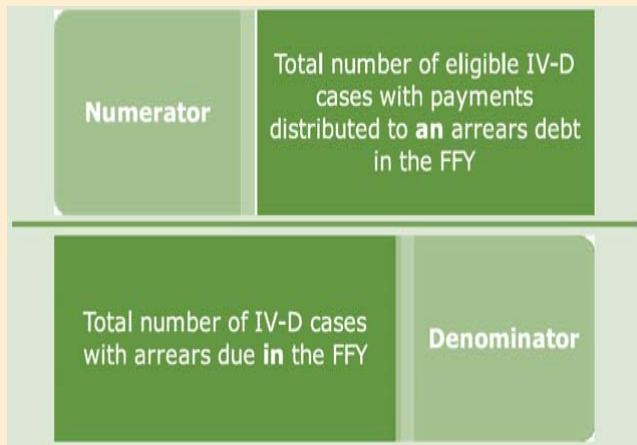




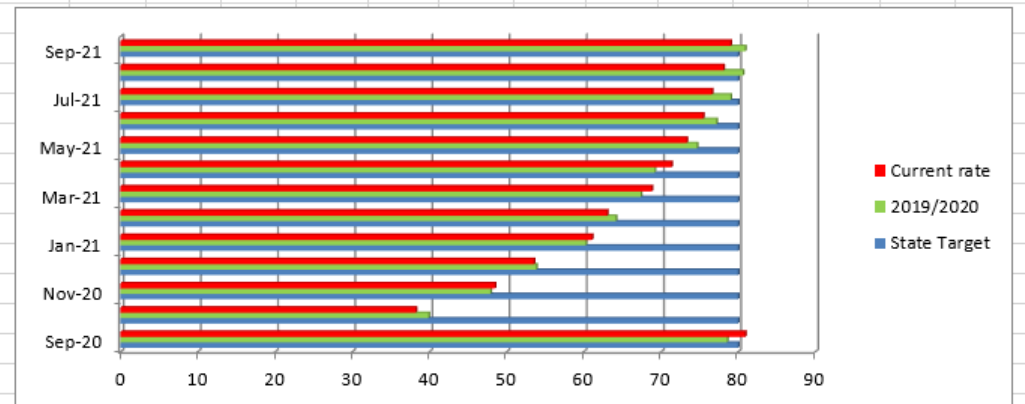
# Current Support Collections



# Arrears Collections



	2007	2008	2009	2010	2011	2012	2013	2014	2015	2016	2017	2018	2019
Unit	68.71	69.72	68.27	69.57	70.68	70.65	72.58	74.11	76.08	78.06	78.37	79.34	78.58
State Target	80	80	80	80	80	80	80	80	80	80	80	80	80
	Sep-20	Oct-20	Nov-20	Dec-20	Jan-21	Feb-21	Mar-21	Apr-21	May-21	Jun-21	Jul-21	Aug-21	Sep-21
State Target	80	80	80	80	80	80	80	80	80	80	80	80	80
2019/2020	78.58	39.9	47.92	53.86	60.26	64.17	67.4	69.21	74.67	77.2	79.03	80.62	80.92
Current rate	80.92	38.25	48.49	53.53	61.08	63.02	68.81	71.37	73.34	75.47	76.62	78.1	79.02



## Caseload



### Performance Allocation:

$$\frac{\text{Marathon Co Caseload } 5,193}{\text{Total Statewide Caseload } 339,845} = 1.53\%$$

1.53% x \$25,692,328 total State allocation for this measure =  
\$393,092 as Marathon County's portion



## Bonus Incentive Medical Support

- Total of \$300,000 GPR available each State fiscal year
- Purpose is to reward County CSAs that find private insurance for Medicaid children
- Reward is also eligible for matching funds at 66%
- Marathon had 363 cases for an additional \$16,759 + matching funds
- At close of fiscal year, 57% of our cases had private insurance in place



# What is Next in FY 2022?

Focus on increasing our paternity and establishment performance

Increasing community education about our program

Integrating successful ELEVATE components into our “standardized” approach to child support services.

