

Marathon County Child Welfare
Housing Collaborative and
Demonstration Project

Family Keys

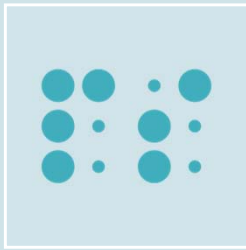
- Overview Presentation
June 2022



Family First Prevention Services Act

- Federal law with financial incentives
- Decrease out of home care days = children belong with their parents
- System change is underway
 - Long term projects and one-time opportunities
 - Department of Children and Families
 - Marathon County Department of Social Services

Basic Needs Support



10% of children are removed from their homes due to unsafe and inadequate housing and no other viable options



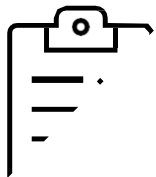
Our Vision of Success:

Adequate and safe housing is available to all families, so that lack of such is never a barrier to parents being able to care for their children.

Goals and Outcomes of Family Keys

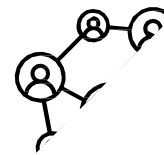
- **Collaborative and participatory:** Department of Children and Families facilitated, but county-led and co-designed so that we meet the most relevant local needs
- **Flexible and iterative:** early release of funds, shared structure but with local differences in implementation
- **At the intersection of child welfare & housing:** Helping families stay together when housing is a key barrier, and they are engaged with Child Protective Services/Child Welfare
- **Resulting in a proof of concept** for how to address housing at the intersection of child welfare (keeping families together)

Who is Involved



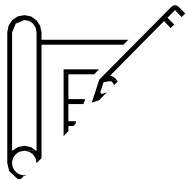
County Teams

Understand local needs and collaborate on vetting and day-to-day implementation of program. Document and monitor progress.



Department of Children and Families Team + Liaisons

Facilitate overall progress, support county teams in project execution, create connections across counties



Root

Umbrella project management for DCF team, facilitate co-design sessions involving county team, lead in the creation of communications plans.



Casey Family Programs

Act as a project partner in highlighting resources, expertise and shared connections.

Family Keys Overview

- Project Design and Long - Term Demonstration
- Successes and Failures – consideration for replication of what works across the state
- Short Term – Marathon County
 - Transitional Housing for Child Welfare Families
 - \$327,100 grant – 2-year grant
 - Rent, utilities, furnishings
 - Case management position is key to help families locate more permanent housing
 - **Families gain experience in successful tenancy**
 - Target date of July 2022

Our Team's Roles

Role	Responsibilities
Project Sponsor / Leadership Oversight	<ul style="list-style-type: none"> • Updated on and reviews progress • Sign-off on key decisions and design • Support facilitation of funds/services • Take part in key engagement activities
Project Manager	<ul style="list-style-type: none"> • Point person to own and execute on next steps • Maintains project momentum and progress • Upon implementation: monitor, report, serve as a point-of-contact
DCF Liaison	<ul style="list-style-type: none"> • Facilitates overall direction and maintains connections with what is being done in other pilot counties
Lived Experience	<ul style="list-style-type: none"> • Keeps lived experience voice at the center • Supports project design and engagement
Child Welfare Expert	<ul style="list-style-type: none"> • Brings expertise in how to understand, engage and support child welfare professionals + understands family needs
Housing Expert	<ul style="list-style-type: none"> • Brings expertise in current housing programs with knowledge of how to implement and design housing solutions
Health Expert	<ul style="list-style-type: none"> • Brings expertise in current health programs, services, and gaps as they intersect with families
Local Champion(s)	<ul style="list-style-type: none"> • Has strong connections within communities • Engages community + informs communications approach • Helps facilitate collaboration with key external stakeholders

Our partners

Team:

- Brian Gumness, B A and Esther Greenheck Foundation
- Ben Lee, United Way
- Laura Scudiere, Health Dept
- Diane Sennholz, North Central Community Action Program
- Social Services:
 - Christa Jensen
 - Mike Nelson
 - Stephanie Breitenfeldt
 - Vicki Tylka

In partnership and support:

- Local landlord
- Saint Vincent De Paul
- Wausau Police Department
- City of Wausau
- ... More to come



**“There is no power for
change greater than a
community discovering
what it cares about.”**

Margaret J. Wheatley