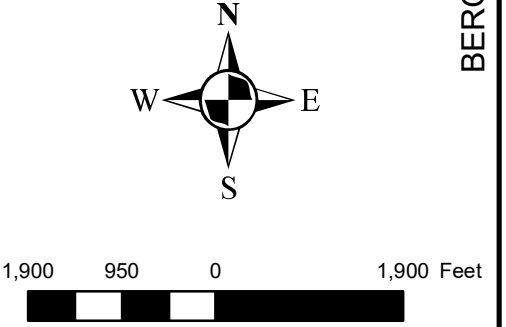
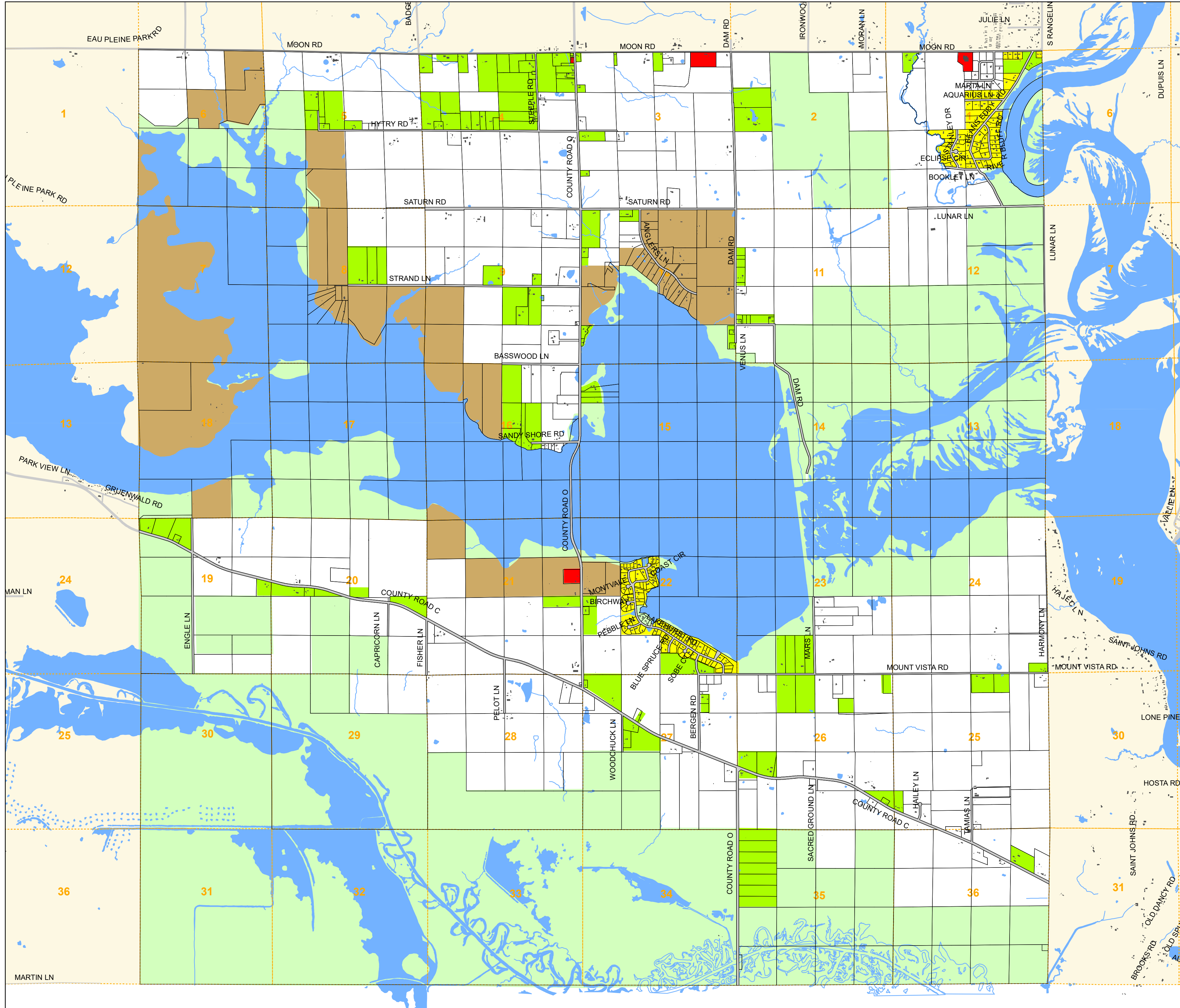


TOWN OF BERGEN - ZONING

BERGEN



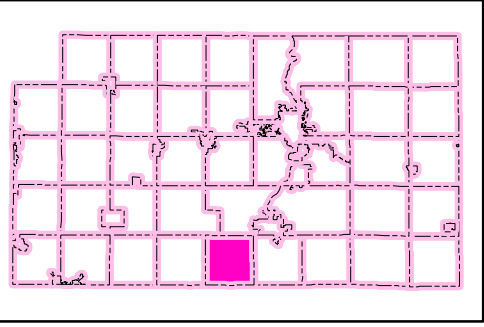
CLASSIFICATIONS

	RS-1		CV
	RS-2		C-1
	RM		M-1
	A-1		M-2
	AR		RC

Other Zoning

Features

- Parcels
- Buildings 2010
- Sections Lines (est.)
- Water Features
- Other Municipality



Base Map Features from May 2000/2005/2010 Aerial Photography.
 This is NOT a Legal Survey Document.
 This is current interpretation of Tax Parcel Status
 Map Developed by Marathon County Conservation, Planning & Zoning Dept
 APPROVAL DATE: 13-AUG-1975
 REVISION DATE: 20-JUN-2000
 Town Authoritative Data Source
 Contact Town
 Map Print Date: 8/21/2023
 Path: P:\gis\data\zoning\independent_townsmnds\bergen_zoning.mxd