



MARATHON COUNTY PARK COMMISSION

AGENDA

AMENDED

Date and Time of Meeting: Tuesday, September 5, 2023 at 10:00am 10:30am

Meeting Location: ~~900 Pardee Street, Wausau 54401 212~~ River Dr., Wausau WI 54403 Conf Rm. 5

The meeting site identified above will be open to the public. Persons wishing to attend the meeting by phone may call into the telephone conference beginning ten minutes prior to the start time indicated above using the following number: 1-408-418-9388 Access code: 2483 270 3568. When you enter the telephone conference, PLEASE PUT YOUR PHONE ON MUTE!

Park Commission Members -

Commissioners: Dawn Herbst, Jean Maszk, Allen Opall, Rick Seefeldt, Kelly Zagrzebski, Lou Larson, Vacant

***Marathon County Mission Statement:** Marathon County Government serves people by leading, coordinating, and providing county, regional, and statewide initiatives. It directly or in cooperation with other public and private partners provides services and creates opportunities that make Marathon County and the surrounding area a preferred place to live, work, visit, and do business. (Last updated: 12-20-05)*

***Parks, Recreation and Forestry Department Mission Statement:** Adaptively manage our park and forest lands for natural resource sustainability while providing healthy recreational opportunities and unique experiences making Marathon County the preferred place to live, work, and play.*

Agenda Items

1. Call to Order
2. Public Comment Period – Not to Exceed 15 Minutes – Any Person Who Wishes to Address the Commission Must Provide, Name, Address and the Topic to the President of the Commission No Later than Five Minutes Before the Start of the Meeting. Topics must be relevant to the Committee’s area of jurisdiction.
3. Approval of the Minutes of the August 1, 2023 Park Commission Meeting
4. Policy Issues for Discussion and Committee Determination
 - A. Discussion and Possible Action by Committee
 1. Reestablishing LuLu B Jacobs Memorial Park
 2. 2024-2025 Facility and Program Fee Schedule
5. Operational Functions Required by Statute, Ordinance or Resolution:
 - A. Discussion and Possible Action by Committee
 1. None
 - B. Discussion and Possible Action by Committee to Forward to the Environmental Resource Committee for its Consideration
 1. None
6. Policy Issues for Discussion and Committee Determination for Consideration by Environmental Resources Committee
 - A. None
7. Educational Presentations/Outcome Monitoring Reports

- A. Project Update (Marathon Park, Sunnyvale, Shooting Range, Peoples Sports Complex, DC Everest Park, Dells of Eau Claire)

8. Announcements

- A. Next Meeting Date & Time, Location – Tuesday, October 3, 2023 at 10:30am, 212 River Dr. Room 5, Wausau, WI 54403
- B. Future Agenda Items – Bat HCP Enrollment Program

9. Adjourn

Signed /s/ Jamie Polley
Presiding Officer or Her
Designee

Any person planning to attend this meeting who needs some type of special accommodation in order to participate should call the County Clerk's Office at 715-261-1500 or e-mail countyclerk@co.marathon.wi.us one business day before the meeting.

FAXED TO DAILY HERALD

THIS NOTICE POSTED AT THE

COURTHOUSE

(Email/Fax City Pages, Marshfield News, Midwest Radio Group)

Date September 1, 2023 Time 1:30 p.m.

By Jodi Luebbe

Date _____ Time _____

By _____

AGENDA SUMMARY

4A1. Discussion and Possible Action to Reestablish LuLu B Jacobs Memorial Park

It has come to our attention from Supervisor Gisselman, who also is part of the Marathon County Historical Society, that in 1982 the beautification committee of the Wausau Area Chamber of Commerce planned and created the Lulu B. Jacob Memorial Terrace located on the west end of the courthouse along Fifth St upon obtaining permission from the County for use of the area (attachment A). The park was built with funds from the Thomas Jacob Foundation. Mr. Jacob was the founder of Hammerblow Tool Co. The park was named in memory of Thomas Jacob's wife.

The park contained stone tables, benches, trees, and planters (attachment B). In 1988 the new jail was constructed, and the park was enclosed within the walls of the jail and over time forgotten. Today the area is closed off to the public, utilized as a storage area and all that remains in the area is one stone table and a plaque (attachment C).

The Park Commission is asked to consider reestablishing the park on the courthouse grounds in the NW corner near the entrance to the jail. This area already has a park-like feel and could be established to have the same feel as the intended LuLu B Jacob Memorial Terrace.

4A2. Discussion and Possible Action on the Proposed Parks, Recreation, and Forestry Department 2024-2025 Facility and Program Fee Schedule

The proposed 2024 – 2025 Facility and Program Fee schedule is enclosed for your review. Approval of the fees is recommended at this time to set the shelter rates for the following year. This allows our department to allow users to reserve shelters 12 months in advance.

Staff is recommending adjustments to the fees that include a 3% increase in the shelter fees (2025), the addition of an annual bike pass at Nine Mile, a Memorial tree fee, reduction to snowshoe annual pass, the addition of a skate sharpening fee, increased camping based on anticipation of ARPA project approvals, and implementing punch card options for train and tubing. Additional proposed items for discussion include the disc golf fee and whether this fee should remain or change to a suggested donation. The fees that need approval are highlighted in yellow fees are recommended by staff. The increases proposed are to keep in line with CPI increases and the increased departmental staffing and equipment costs.

7A. Project Update

Marathon Park:

- Ice is going in rink 1 on 9/10.
- Cyclones' have arranged for the first ever United States Hockey League game on 9/16 between the Madison Capitals Hockey Club and the Green Bay Gamblers Hockey.
- Setting up the park for Art in the Park 9/8-9/10.

Sunnyvale: Softball is complete for the season.

Shooting Range: Painting is being completed and the range is gearing up for hunting season.

People Sports Complex: Preparing the field for the MC United Fall Cup tournament in 2 weeks.

DC Everest Park:

- A self-serve kayak station has been installed.
- The restroom will be replaced the first week of October.

Dells of Eau Claire:

- The Highway Department assist with the installation of a new culvert by the manager's cabin.
- The Highway Department will also assist with the pulverizing, grading and paving of the Beach parking area. Pulverizing and grading will begin the week of 9/11 and paving is planned for the week of 9/18.

DRAFT
MARATHON COUNTY PARK COMMISSION

Date and Time of Meeting: August 1, 2023 at 10:00am

Location: Park Operations Shop at 900 Pardee Street,
Wausau WI 54401

Park Commissioners present: Dawn Herbst, Lou Larson, Rick Seefeldt, Kelly Zagrzebski-(via Webex)

Excused: Jean Maszk, Allen Opall

Staff present: Jamie Polley-Parks, Recreation and Forestry Director-(via Webex), Andy Sims-Assistant Director of Operations, Tom Lovlien-Forest Administrator

Others present: Mr. and Mrs. Tim Micke, Dave Decker-(via Webex)

1. Call to Order – President Seefeldt called the Park Commission meeting to order at 10:00 am. Official notice and the agenda for the meeting was posted publicly in accordance with the State statutes.

2. Public Comment – none brought forward

3. Approval of the Minutes of the June 27, 2023 Park Commission Meeting – Motion by Herbst, second by Larson to approve the June 27, 2023 meeting minutes. Motion **carried** by voice vote, vote reflected as 4-0.

4. Policy Issues for Discussion and Committee Determination

A. Discussion and Possible Action by Committee - None

5. Operational Functions Required by Statute, Ordinance or Resolution:

A. Discussion and Possible Action by Committee - None

B. Discussion and Possible Action by Committee to Forward to the Environmental Resource Committee for its Consideration

1. Updates to Chapter 19 of the Marathon County General Code – Sims explained that the Park Commission had recommended some proposed Chapter 19 ordinance changes to the Environmental Resource Committee. The Environmental Resource Committee felt additional language should be added to the section pertaining to hunting in Big Eau Pleine Park regarding stand height, stand installation/identification, licensure and cameras. A majority of items have been clarified in archery like distances from picnic areas, campgrounds, beaches, etc. and it must take place from an elevated platform of no less than six feet off the ground. Polley explained that this would also include distances from the center of a designated roadway and designated trail. There is also language similar to County forest lands that trees stands need to be removed daily but can stay on site through the end of the season. **Motion** by Larson, second by Herbst to forward to the Environmental Resource Committee. Motion **carried** by voice vote, vote reflected as 4-0.

6. Policy Issues for Discussion and Committee Determination for Consideration by Environmental Resources Committee

A. Discussion and Possible Action Establishing Dells of the Eau Claire Property Line near Group Campground – The adjacent property owner to the Dells of the Eau Claire contacted the County to establish the property line between the park and his property prior to establishing timber management boundaries for management of this property. Staff worked with the County surveyor to verify the boundary lines. It was identified that this section was a corrected section and the property lines did not match what were thought to be the property lines. The correct property lines indicate that the County’s group campground privy is encroaching on Mr. Micke’s property. In addition, Mr. Micke completed some brush removal up to the down barb wire fence line on what was found to be County property along his southern property line. A couple of options were discussed and the option that both Mr. Micke and staff would prefer is to do a quit claim deed for 0.547 acres of County land to Mr. Micke and for 0.08 acres of Mr. Micke’s land to the County. **Motion** by Larson, second by Seefeldt to go ahead with the quit claim deed option. Motion **carried** by voice vote, vote reflected as 4-0.

B. Discussion and Possible Action Approving Funding for Ice Arena Architectural Study – The County Board approved the Westside masterplan and a component of the plan is to relocate a new ice arena to a new location outside of the park. The first step is to understand the facility and space that is needed for the success of the County and all user groups. To accomplish this the County should complete an Architectural feasibility study. During this study the consultant will work with the County to establish the parameters of the facility and identify the County’s needs. The consultant will then develop a stakeholder and community engagement process which will include in-person meeting with all user groups to determine their wants and needs for the facility. Based on the information collected a written facilities program will be developed. This program will outline the recommended facility components, their associated space needs, and square footage requirements. Conceptual facility and site planning options will be provided, and a cost-estimate of the ice arena and typical site improvements will be developed. Staff solicited written quotes for the completion of the architectural feasibility study from four companies that specialize in ice arena development. One proposal was received from JLG Architects. JLG Architects is a reputable company and has designed and built many ice arenas throughout the country. They have the country’s only Certified Ice Technician + Certified Ice Rink Manager and are committed to designing ice arenas for operational sustainability and extraordinary visitor/player experiences. The cost of the study is \$32,500. The County has received a commitment from Wausau Youth hockey for \$5,000 and the Wausau school district will consider contributing \$5,000 at an upcoming meeting to support the study. The PRF donation account has \$10,500 available for the study. Staff is requesting that county board identify and approve the allocation of the remaining \$12,000 potentially from ARPA funds. **Motion** by Larson, second by Herbst to move forward with the ice arena architectural study. Motion **carried** by voice vote, vote reflected as 4-0.

7. Educational Presentation/Outcome Monitoring Reports for Discussion

A. Project Update – Dells of Eau Claire – Beach restroom roof replacement is complete, several hazard trees were removed. Sports Complex – Encountered significant damage from sandhill cranes due to grub infestation. Staff treated the area of grubs, and a coyote decoy was installed to deter further damage. The decoy seems to be working. MC United Spring/Summer soccer season has concluded and WAYSA has begun. Camping – Usage remains high within the campgrounds with revenue currently at 57% of budget amount. Playgrounds – Bluegill and Mission need soil restoration, Cherokee needs chips and border.

B. Marathon Park Water Project – Sims reported that the project is all complete. There is a small amount of turf restoration work to be done after the Fair.

8. Announcements

A. Next Meeting Date & Time, Location – Tue., September 5, 2023 at 10:30am, 212 River Dr., Room 5, Wausau, WI 54403

B. Future Agenda Items – Bat HCP Enrollment Program, Lu Lu B Jacobs Memorial Park

9. Adjourn - Motion by Herbst, second by Larson to adjourn the meeting at 10:25am. Motion **carried** by voice vote, vote reflected as 5-0.

There was not a quorum at the 11:00am Joint Park Commission/Fairboard Meeting.

ATTACHMENT #
Attachment A

Small park to be built across from Courthouse

By DON OAKLAND
Herald Staff

Thanks to a contribution from a private foundation, Wausau will have a new park this fall.

The beautification committee of the Wausau Area Chamber of Commerce has announced plans to go ahead with creation of the Lulu B. Jacob Memorial Terrace to be located at the corner of Fifth and Jackson Streets.

The park will be built with funds from the Thomas Jacob Foundation. Jacob was the founder of Hammerblow Tool Co., which is now Hammerblow Corp. in Wausau. The foundation was established after his death. The park is being named in memory of his wife.

The park will be approximately 30 by 90 feet along the west side of the Court-

house Annex, according to Mariana Nan Lonsdorf, 623 Gilbert St., Wausau, who coordinated the project for the beautification committee.

The idea for the park was first suggested by Robert Peterson, city-county forester, Lonsdorf said.

About a year and a half ago, the committee obtained permission from the county to use the site as a park. However, utility work on Fifth Street prevented its construction, she said.

The park will have three stone tables and benches and three separate benches on a Terra-Lok floor framed by locust and red leaf choke cherry trees, bushes and annual flowers.

The colors of the floor and brick edging will blend with the brick of the

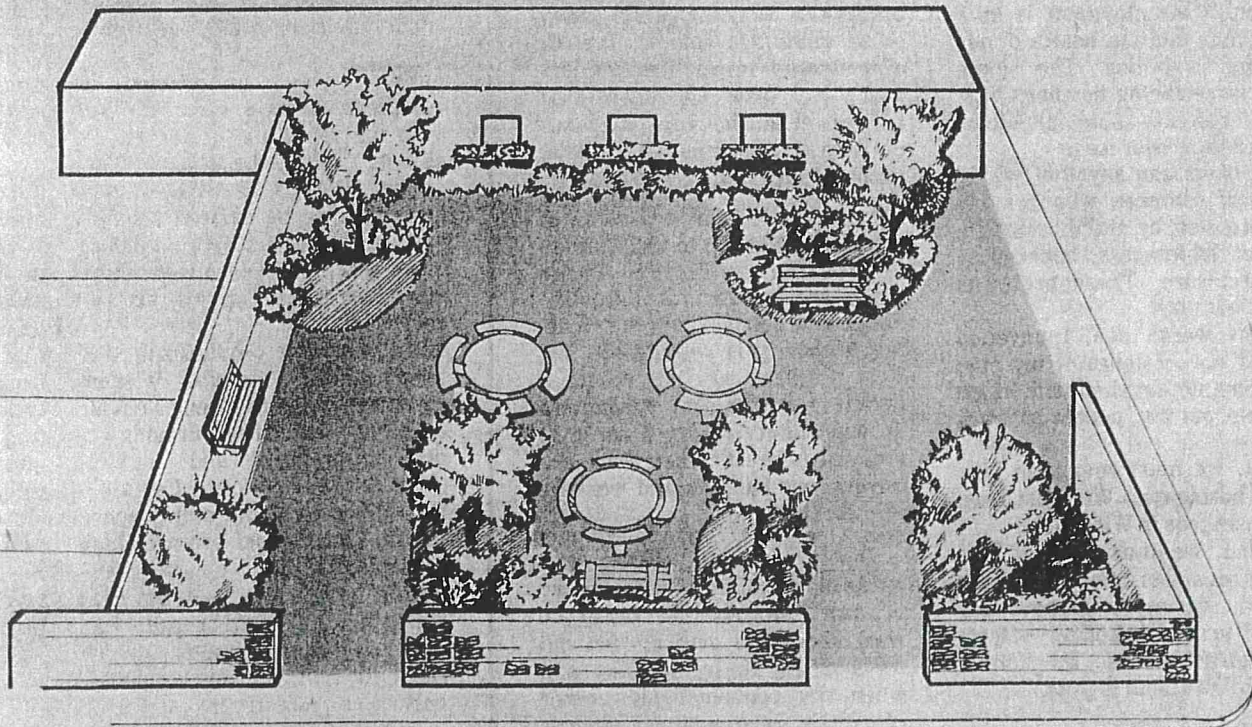
Courthouse Annex and the Sears building across the street, Lonsdorf said.

The greenery is expected to provide a shield between park visitors and traffic on the two streets.

The park was designed by Robert Schmeichel, a landscape architect and owner of Design Limited, Rothschild.

Ronald Wimmer Construction Co., Wausau, is donating use of their machinery to remove the blacktop now on the park site. Weston Tree Co., 5505 Volkman St., Schofield, has the contract to build the park.

Woodworking classes at North Central Technical Institute, Wausau, taught by Greg Magnuson, will build planter window boxes along the west side of the Annex.



Sketch of new park

This is an artist's conception of what the city of Wausau's newest park will look like when it is completed. The small park, located across from the

Courthouse, will be known as the Lulu B. Jacob Memorial Terrace. Work will begin on the park this fall. The sketch was done by Daily Herald artist Karen Mischock.



Piece of courthouse in park

ane donated by the Wergin Co. lifts into a section of granite from the old Marathon County Courthouse. The two sections, weighing about a ton, were placed in the corner of a new park built at the intersection

of Fifth and Jackson streets. Looking on are (from left) Nan Lonsdori, who helped coordinate creation of the park; Maryanne Norton, librarian at the Marathon County Historical

Museum; and Robert Peterson, city official. The small park, which recently opened, was built with funds donated by the Lull Memorial Fund.

—Herald photo by Rauf

Attachment C

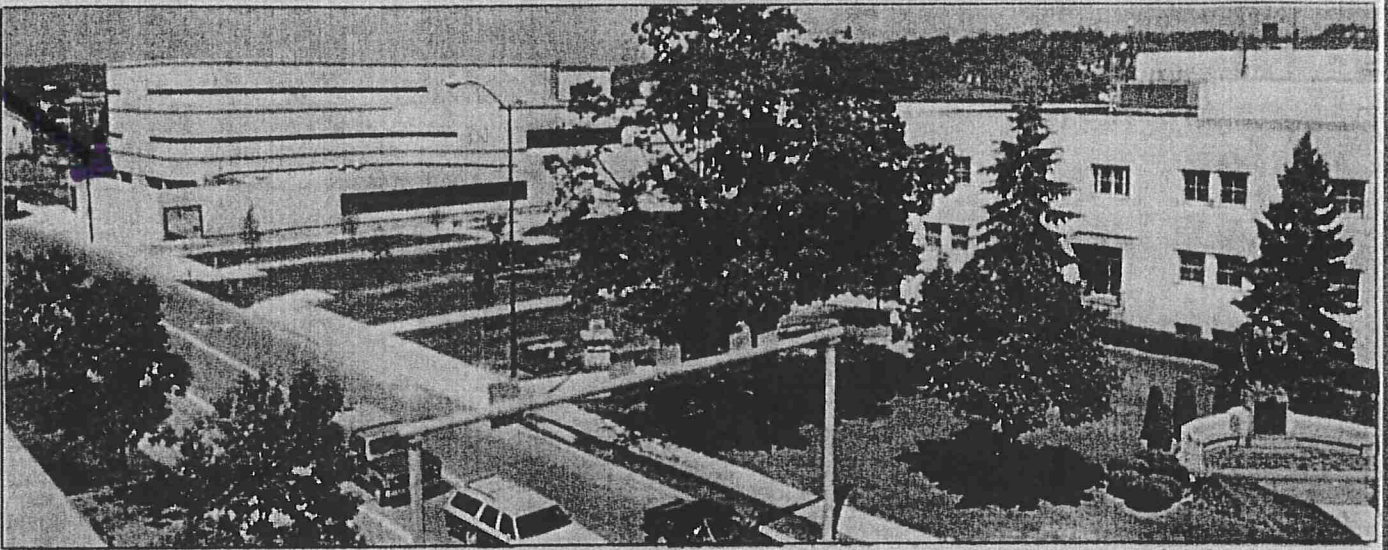


Proposed Location



A Gannett Newspaper Serving North Central Wisconsin

S1



Sheloo Gerbers/Wausau Daily Herald

The newly constructed Marathon County Jail will be dedicated Friday with weekend tours open to the public.

Jail doors to open - briefly

ous to low 70s
SUNDAY: Fair; lows in 50s, highs in low 70s.
MONDAY: Fair; lows in 50s, highs in upper 60s to low 70s.
 Please see weather details on Page 2.

Mayor opposed to jail plan

Local

Two Republicans running in 12th Senate District race. Page 3.
 Two Democrats want 86th Assembly seat. Page 3.
 Tidbits from the Mondale-Ferraro visit. Page 3.
 Merrill School Board has plan for disruptive students. Page 7.

Sports

Manager Greg Mahlberg reviews the Timbers' 1984 season. Page 9.
 Lefty Ray Searage is stopped in Brewers' 7-5 victory over the Red Sox. Page 9.

Nation

Reagan finally endorsing treaty to outlaw genocide. Page 23.

World

Democrats call halt to U.S.-built bases in Honduras being used for raids into Nicaragua. Page 22.

State

Elfbusters pull up the stakes in protest of project. Page 5.

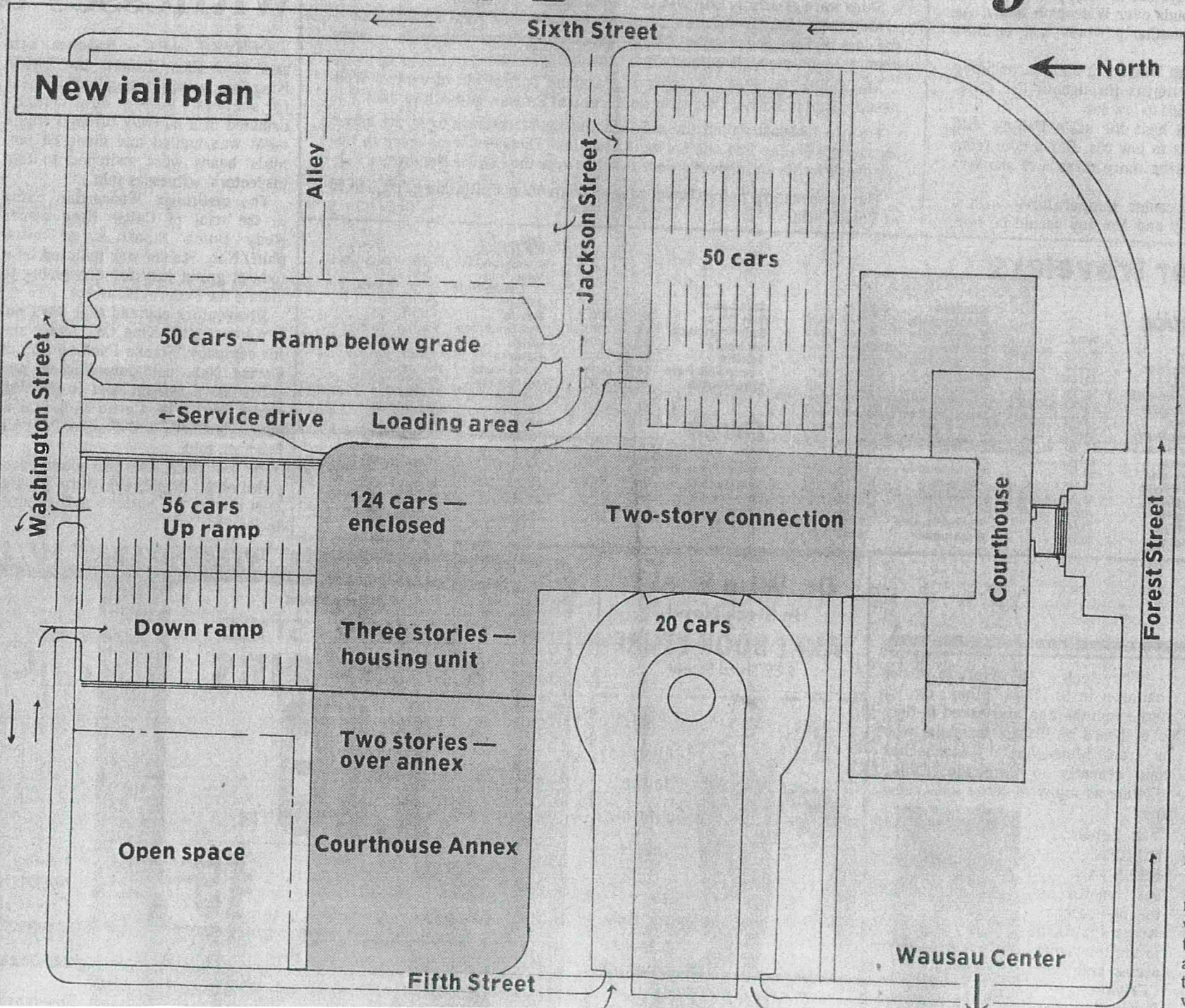
Editorial

Merrill deserves to feel proud, says editorial. Page 6.

Ann Landers	19	In the news	5
Business	8	Obituary	22
Classified	23	People	2
Comics	16	Scoreboard	10
Editorial	6	TV	18
Features	17	Weather	2

Deaths

Obituaries on Page 22
 Frank K. Albrecht



Committee wants to close one city block

By JIM ELLIOTT
 Daily Herald Reporter

A plan for the new Marathon County Jail that would close the 500 block of Jackson Street was unveiled Wednesday by the county's public safety facility committee.

The plan calls for a three-story building, with a two-story connector to the existing Courthouse.

But the county faces one major hurdle with the plan: It needs the city's approval to vacate the street.

And Mayor John Kannenberg said he's strongly opposed to that.

"I'm opposed to it for a lot of reasons. How many streets can you close? We keep on doing it. I realize we had to for the mall. But they're talking about putting more traffic on Washington Street. What's the future of that street?," he asked.

Kannenberg said development of the old Horace Mann School site with a bank and legal firm will add traffic to the street, in addition to the traffic the jail itself will generate.

"I also never was in favor of putting the jail there," he said of the Courthouse site. "I think they could have expanded the existing jail. This is going to cost the taxpayers a lot of money. This property is more valuable for businesses. It's in our tax increment district."

Ardean Kort, who along with committee member Byron Bronston met with the mayor, said he believes there is hope the City Council will approve closing the street because the aldermen are also county supervisors.

PROPOSED 2024 FACILITY AND PROGRAM FEES AND 2025 SHELTER/CAMPGROUND FEES

	2023	2024	2025	2026
ADMINISTRATIVE				
<u>NSF Fee</u>	\$30	\$30	\$30	TBD
The NSF (non-sufficient funds) fee covers administrative staff time to pursue collection on uncollectible checks that are returned from the bank to the Treasurer's Office.				
<u>Violation Notice</u>	+user fee if applicable \$50	\$50	\$50	TBD
<u>CC Convenience Fee</u>	on all CC transactions 2%	2%	TBD	TBD
BIKING				
<u>Mountain-Bay Trail</u>				
Bicyclists 16 years of age and older are required to purchase a trail pass when using Wisconsin State Trails. There are no specific trail fees for snowmobile users. These users already pay user fees through registration and licensing. There is no fee for hiking.				
Mountain-Bay State Park Trail Annual Pass	\$25	\$25	\$25	DNR Determines
Mountain-Bay State Park Trail Daily Pass	\$5	\$5	\$5	TBD
Mountain-Bay State Park Trail - Permit to Cross Trail	\$200	\$200	\$200	TBD
<u>Nine Mile</u>				
Fees are mandatory for all bikers, including race participants				
Nine Mile Annual Pass (12 and older)	\$30	\$30	TBD	TBD
Nine Mile Daily Pass (12 and older, Regular & Fat Tire Seasons)	\$5	\$6	TBD	TBD
Nine Mile Replacement	\$10	\$10	TBD	TBD
Nine Mile Fat Tire Bike Trial Season Pass	\$20	\$25	TBD	TBD
Annual Bike Pass (May 1-April 30)	N/A	\$50		
BOAT LAUNCH				
Annual Sticker	\$30	\$30	TBD	TBD
Business Sticker	\$50	\$50	TBD	TBD
Daily Pass	\$6	\$6	TBD	TBD
Replacement	\$10	\$10	TBD	TBD
CAMPING				
Reservation Fee	\$8	\$8	\$10	TBD
Cancellation Fee	\$10	\$10	\$10 Min	TBD
Firewood (DEC & BEP)	\$6/bundle	\$6/bundle	\$6/bundle	TBD
Sanitary Dumping Station (MP, BEP & DEC)	7	\$7	\$7	TBD
<u>Big Eau Pleine Park (106 Sites)</u>				
West Unit Lakeview Electric Site	\$26/night	\$27/night	\$29/night	TBD
Electric Site	\$24/night	\$25/night	\$27/night	TBD
South Unit Lakeview Non-Electric	\$21/night	\$22/night	\$24/night	TBD
South Unit Non-Electric	\$19/night	\$20/night	\$22/night	TBD
Group Campground (200 maximum capacity)	\$195/night	\$200/night	\$205/night	TBD
<u>Dells of the Eau Claire Park (28 Sites)</u>				
Electric Site (23 sites)	\$24/night	\$25/night	\$27/night	TBD
Non-Electricity Site (5 sites)	\$19/night	\$20/night	\$22/night	TBD
Group Campground (300 maximum capacity)	\$175/night	\$180/night	\$185/night	TBD
<u>Marathon Park (28 sites)</u>				
Electric Site (24 sites)	\$27/night	\$27/night	\$27/night	TBD
Non-Electricity Site (4 sites)	\$22/night	\$22/night	\$22/night	TBD
Forest Unit Undesignated Camping Permit	\$25	\$25	\$25	TBD
DISC GOLF				
<u>Big Eau Pleine Disc Golf</u>				
*Family Definition: One or two adults and their children. (Up to 2 adults + their 12-17 yr. old children)				
Annual Family* Pass	\$30 + (50% off each adult)	\$30 + (50% off each adult)		TBD
Annual Adult Pass	\$30	\$30		TBD
Annual Youth Pass (17 and under)	\$20	\$20		TBD
Daily Pass	\$4	\$4		TBD
EVENT AND RACE FEES				
School Cross Country Running Races (Includes Nine Mile Chalet or park shelter)	420	\$430	\$430	TBD
Events/Races - under 100 participants	\$5.25 per participant	\$5.50 per participant	\$5.75 per participant	TBD
Events/Races - exceeding 100 participants	Negotiable	Negotiable	Negotiable	Negotiable
Event Fees - Snow Fence 50" Roll including stakes and ties	\$12/roll	\$15/roll	\$15/roll	TBD
Event Fees - Barricades	\$7/each	\$10/each	\$10/each	TBD
Event Fees - Picnic Tables	\$20/each	\$25/each	\$25/each	TBD
Event Fees - Manual Post Pounder	\$35	\$35	\$35	TBD
Event Fees - Water Stand Pipes	\$50/each	\$53/each	\$53/each	TBD
Event Fees - Backflow Preventers	\$12/each	\$15/each	\$15/each	TBD
Event Fees - Bleacher Planks	\$7/each	\$7/each	\$7/each	TBD
Event Fees - Portable Electrical Panels (Spider Box)	\$165/panel/event	\$170/panel/event	\$170/panel/event	TBD
Event Fees - Portable Stage	\$200/each	\$200/each	\$200/each	TBD
Event Fees - Portable Stage Canopy	\$100/each	\$100/each	\$100/each	TBD
Event Fees - Sound/Light System (400 Block)	\$165	\$165	\$165	TBD
Event Fees - Staff - Week Day	\$45/hr/person	\$50/hr/person	\$50/hr/person	TBD
Event Fees - Staff - Weekend and Evenings	\$70/hr/person	\$75/hr/person	\$75/hr/person	TBD
Concession/Merchandise Sales	10% gross excluding taxes	10% gross excluding taxes	10% gross excluding taxes	TBD
Vendor Permit Fee	\$50/each	\$50/each	\$50/each	TBD

	2023	2024	2025	2026
FACILITIES AND SHELTERS				
<u>Additional Fees</u>				
Staff time for Cleaning/Repairs/Etc.	\$40/hr	\$45/hr	\$50/hr	TBD
Misc.	Negotiable	Negotiable	Negotiable	Negotiable
Current Sales Tax	5.50%	5.50%	5.50%	TBD
Late Payment Fee	\$50/30 days	\$50/30 days	\$50/30 days	TBD
<u>Deposits</u>				
Key Deposits	\$50	\$50	\$50	TBD
Facility Deposit*	\$200	\$200	\$200	TBD
*This deposit shall be paid at the time your reservation is approved if your event is open to the public, having alcohol sales, playing amplified music, or placing a tent/temporary structure on site at any one of the following locations. This deposit may also be applied in additional places if the department determines there is a clear need for it. Marathon Park: East Gate Hall, Grandstand, Marathon Junction, Multi-Purpose Buildings; Mission Lake Shelter, Nine Mile Chalet, Oak Island Enclosed Shelter, Riverside Park Lodge, Sylvan Hill Chalet				
<u>400 Block (City Special Event Permit fees not included)</u>				
Private event sponsored by a private group	\$210/4 hrs or less per day \$420/greater than 4 hrs per day	\$350/4 hrs or less per day \$700/greater than 4 hrs per day	\$350/4 hrs or less per day \$700/greater than 4 hrs per day	TBD
Admission event	\$210/4 hrs or less per day \$420/greater than 4 hrs per day	\$400/4 hrs or less per day \$800/greater than 4 hrs per day	\$400/4 hrs or less per day \$800/greater than 4 hrs per day	TBD
Free event - open to the public	\$79/ 4 or less hrs per day \$158/greater than 4 hrs per day	\$81/ 4 or less hrs per day \$163/greater than 4 hrs per day	\$81/ 4 or less hrs per day \$163/greater than 4 hrs per day	TBD
Parks - Non - Exclusive Use Event Fee - Non-Commercial	\$161/day	\$166/day	\$171/day	TBD
Parks - Non - Exclusive Use Event Fee - Commercial	\$330/day	\$340/day	\$350/day	TBD
Parks - Non - Exclusive Use Event Fee - Non-Commercial 4 Hours or	\$107/day	\$110/day	\$113/day	TBD
Parks - Non - Exclusive Use Event Fee - Commercial 4 hours or less	\$220/day	\$227/day	\$234/day	TBD
Event Fee for non-exclusive use of any Wausau or Marathon County Park exclusive of buildings. Includes Equipment Demo				
Facilities-Opening Shelter before 8:00am-1 hr. minimum	\$59/per hr	\$61/per hr	\$63/per hr	TBD
<u>Big Eau Pleine Park</u>				
Big Eau Pleine Enclosed Shelter-NonCommercial	\$107/day	\$110/day	\$113/day	TBD
Big Eau Pleine Enclosed Shelter-Commercial	\$219/day	\$226/day	\$233/day	TBD
Big Eau Pleine Open Shelter #29-NonCommercial	\$85/day	\$88/day	\$91/day	TBD
Big Eau Pleine Open Shelter #29-Commercial	\$177/day	\$182/day	\$187/day	TBD
<u>Bluegill Bay Park</u>				
Bluegill Bay Open Shelter #4-NonCommercial	\$66/day	\$68/day	\$70/day	TBD
Bluegill Bay Open Shelter #4-Commercial	\$136/day	\$140/day	\$144/day	TBD
<u>Cherokee Park</u>				
Cherokee Park Shelter-NonCommercial	\$107/day	\$110/day	\$113/day	TBD
Cherokee Park Shelter-Commercial	\$219/day	\$226/day	\$233/day	TBD
<u>Dells of the Eau Claire Park</u>				
Dells Enclosed Shelter-NonCommercial	\$119/day	\$123/day	\$127/day	TBD
Dells Enclosed Shelter-Commercial	\$250/day	\$258/day	\$266/day	TBD
Dells Open Shelter #13-NonCommercial	\$85/day	\$88/day	\$91/day	TBD
Dells Open Shelter #13-Commercial	\$177/day	\$182/day	\$187/day	TBD
Dells Open Shelter #14-NonCommercial	\$57/day	\$59/day	\$61/day	TBD
Dells Open Shelter #14-Commercial	\$118/day	\$122/day	\$126/day	TBD
<u>Marathon Park</u>				
Bandstand - NonCommercial	\$66/day	\$68/day	\$70/day	TBD
Bandstand - Commercial	\$136/day	\$140/day	\$144/day	TBD
(The Bandstand is reservable for the Wausau Community Band at no charge)				
Big Kitchen (1-200 people)-NonComm	\$184/day	\$190/day	\$196/day	TBD
Big Kitchen (1-200 people)-Commercial	\$368/day	\$379/day	\$390/day	TBD
Big Kitchen (201-300 people)-NonComm	\$323/day	\$333/day	\$343/day	TBD
Big Kitchen (201-300 people)-Commercial	\$646/day	\$665/day	\$685/day	TBD
Big Kitchen (301-500 people)-NonComm	\$457/day	\$471/day	\$485/day	TBD
Big Kitchen (301-500 people)-Commercial	\$915/day	\$942/day	\$970/day	TBD
plus expenses (dumpster, etc)				
Cattle Barn No. 1 or No. 2 Non Commercial	\$165/day	\$170/day	\$175/day	TBD
Cattle Barn No. 1 or No. 2- Livestock Event Commercial	\$440/day	\$453/day	\$467/day	TBD
Cattle Barn No. 1 or No. 2- Non Livestock Event Commercial	\$809/day	\$833/day	\$858/day	TBD
Cattle Barn No. 3 - Non Commercial	\$247/day	\$254/day	\$262/day	TBD
Cattle Barn No. 3 - Commercial	\$609/day	\$627/day	\$646/day	TBD
East Gate Hall Non-Comm (1-300 people)	\$512/day	\$527/day	\$543/day	TBD
East Gate Hall Non-Comm (301-800 people)	\$837/day	\$862/day	\$888/day	TBD
East Gate Hall Commercial (1-800 people)	\$1282/day	\$1320/day	\$1360/day	TBD
EGH Hourly Set Up Rate-Comm. & Non-Commercial (2 hr min)	\$82/hr	\$84/hr	\$87/hr	TBD
Tables & Chairs - East Gate Hall-Comm. & Non-Commercial				
Up to 10 tables and/or 100 chairs per building	FREE	FREE	FREE	FREE
Each additional 10 tables OR 100 chairs	\$68	\$70	\$72	TBD
(Total of 50 Tables and 500 Chairs)				

	2023	2024	2025	2026
Exhibition Building North Wing & Rotunda NonComm	\$247/day	\$254/day	\$262/day	TBD
Exhibition Building North Wing & Rotunda Commercial	\$609/day	\$627.00	\$646/day	TBD
Exhibition Building Each Additional Wing NonComm	\$247/day	\$254/day	\$262/day	TBD
Exhibition Building Each Additional Wing Commercial	\$609/day	\$627/day	\$646/day	TBD
Exhibition Building Hourly Set Up Rate-Comm. & NonComm	\$82/hr	\$84/hr	\$87/hr	TBD
Grandstand & Show Area Non Commercial	\$1139/day	\$1173/day	\$1208/day	TBD
Grandstand & Show Area Commercial/day	Negotiable	Negotiable	Negotiable	TBD
Grandstand & Midway & Show Area Non Commercial	\$1421/day	\$1464/day	\$1508/day	TBD
Grandstand & Midway & show Area Commercial/day	Negotiable	Negotiable	Negotiable	TBD
Horse Barn (stall/day) Non Commercial	\$35/day	\$36/day	\$37/day	TBD
Horse Barn (stall/day) Commercial	\$55/day	\$57/day	\$59/day	TBD
Horse Exercise Area Non Commercial	\$116/day	\$119/day	\$123/day	TBD
Horse Exercise Area Commercial/day (plus expenses for special services)	Negotiable	Negotiable	Negotiable	TBD
Infield NonCommercial	\$570/day	\$587/day	\$605/day	TBD
Infield Commercial	Negotiable	Negotiable	Negotiable	TBD
Judging Pavilion NonCommercial	\$247/day	\$254/day	\$254/day	TBD
Judging Pavilion Commercial	\$609/day	\$627/day	\$627/day	TBD
Judging Pavilion Hourly Set Up Rate-Comm.& NonComm	\$82/hr	\$84/hr	\$84/hr	TBD
Marathon Junction Rental-NonComm	\$28/hour	\$29/hour	\$30/hour	TBD
Marathon Junction Rental-Comm	\$54/hour	\$56/hour	\$58/hour	TBD
Marathon Junction All Day Rental-NonComm (8am-11pm)	\$258/day Max	\$266/day Max	\$274/day Max	TBD
Marathon Junction All Day Rental-Comm (8am-11pm)	\$536/day Max	\$552/day Max	\$569/day Max	TBD
Marathon Junction Train ride (3X round) each ride	\$1.25	\$2.00	TBD	TBD
Marathon Junction Train ride (2X round) 4 rides	\$4.75	N/A	TBD	TBD
Marathon Junction Train ride (3X round) 10 rides	\$13.75	\$18.00	TBD	TBD
Marathon Junction Train ride (2X round) 20 rides	\$22.50	N/A	TBD	TBD
Meeting Hall Summer Only-Non Commercial	\$164/day	\$169/day	\$174/day	TBD
Meeting Hall Summer Only-Commercial	\$337/day	\$347/day	\$357/day	TBD
Meeting Hall Summer Meeting Rate/min 2 hrs	\$47	\$48	\$49	TBD
Midway NonCommercial	Negotiable	Negotiable	Negotiable	Negotiable
Midway Commercial	Negotiable	Negotiable	Negotiable	Negotiable
MPB#1 Non Commercial <1500 people	\$512/day	\$527/day	\$543/day	TBD
MPB#1 Commercial<1500 people	\$1922/day	\$1980/day	\$2039/day	TBD
MPB#1 Non Commercial >1500 people	\$678/day	\$698/day	\$719/day	TBD
MPB#1 Commercial >1500 people	\$2793/day	\$2877/day	\$2963/day	TBD
Winter Use: Sept. 15 - March 30				
MPB#2 Non Commercial <1500 people	\$512/day	\$527/day	\$543/day	TBD
MPB#2 Commercial <1500 people	\$1922/day	\$1977/day	\$2036/day	TBD
MPB#2 Non Commercial >1500 people	\$678/day	\$698/day	\$719/day	TBD
MPB#2 Commercial >1500 people	\$2793/day	\$2877/day	\$2963/day	TBD
Winter Use: Oct. 15 - March 4				
Multi-Purpose Building Hourly Set Up Rate-Comm and Non-Comm	\$82/hr	\$84/hr	\$87/hr	TBD
Tables & Chairs - MPB's Comm. & Non-Commercial				
Up to 10 tables and/or 100 chairs per building	FREE	FREE	FREE	FREE
Each additional 10 tables OR 100 chairs (Total of 50 tables and 500 chairs)	\$69	\$71	\$73	TBD
Open Shelters (#1-4)-Non Commercial	\$57/day	\$59/day	\$61/day	TBD
Open Shelters (#1-4)-Commercial	\$118/day	\$122/day	\$126/day	TBD
Open Shelter #5-Non Commercial (No restrooms)	\$66/day	\$68/day	\$70/day	TBD
Open Shelter #5-Commercial (No restrooms)	\$136/day	\$140/day	\$144/day	TBD
Open Shelter #5 - Restroom Fee-Non Commercial	\$119/day	\$123/day	\$127/day	TBD
Open Shelter #5 - Restroom Fee-Commercial	\$250/day	\$258/day	\$266/day	TBD
Poultry Barn - Non Commercial	\$165/day	\$170/day	\$175/day	TBD
Poultry Barn-Livestock Event Commercial	\$440/day	\$453/day	\$467/day	TBD
Poultry Barn-Non Livestock Event Commercial	\$809/day	\$833/day	\$858/day	TBD
<u>Mission Lake Park</u>				
Mission Lake Open Shelter-Non Commercial	\$66/day	\$68/day	\$70/day	TBD
Mission Lake Open Shelter-Commercial	\$136/day	\$140/day	\$144/day	TBD
<u>Nine Mile Chalet</u>				
Nine Mile Chalet-Non Commercial	\$323/day	\$333/day	\$343/day	TBD
Nine Mile Chalet-Commercial	\$646/day	\$665/day	\$685/day	TBD
<u>Oak Island Park</u>				
Oak Island Shelter - NonCommercial	\$171/day	\$176/day	\$181/day	TBD
Oak Island Shelter - Commercial	\$356/day	\$367/day	\$378/day	TBD
<u>Pleasant View Park</u>				

	2023	2024	2025	2026
PleasantView Shelter - NonComm	\$114/day	\$117/day	\$121/day	TBD
PleasantView Shelter-Commercial	\$231/day	\$238/day	\$245/day	TBD
Riverside Park				
(150 winter capacity) (parking lot between shelter & river included in rental)(meeting use minimum of 2 hrs)				
Riverside Shelter-NonComm-1-200	\$254/day	\$262/day	\$270/day	TBD
Riverside Shelter - Comm - 1-200	\$525/day	\$541/day	\$557/day	TBD
Riverside Shelter - NonComm - 201-300	\$422/day	\$435/day	\$448/day	TBD
Riverside Shelter - Comm - 201-300	\$876/day	\$902/day	\$929/day	TBD
Riverside Shelter - NonComm - 301-400	\$597/day	\$615/day	\$633/day	TBD
Riverside Shelter - Comm - 301-400	\$1233/day	\$1270/day	\$1308/day	TBD
Riverside Shelter - Meeting	\$57/hr	\$59/hr	\$61/hr	TBD
Shooting Range				
(No charge for hunter education or firearm safety training classes)				
Shooting Range Lodge-Non Commercial	\$99/day	\$102/day	\$105/day	TBD
Shooting Range Lodge-Commercial	\$206/day	\$212/day	\$218/day	TBD
Sylvan Hill Park				
(meeting use minimum 2 hours)				
Sylvan Hill Chalet - Non-Commercial	\$254/day	\$262/day	\$270/day	TBD
Sylvan Hill Chalet - Commercial	\$525/day	\$541/day	\$557/day	TBD
Sylvan Hill Chalet - Meeting 1-50	\$45/hr	\$47/hr	\$48/hr	TBD
Sylvan Hill Chalet - Meeting 50+	\$57/hr	\$59/hr	\$61/hr	TBD
ICE ARENA				
All hourly rates are pretax.				
MPB#1 and MPB#2 - For all ice	\$150/hour	\$155/hour	\$160/hour	TBD
MPB#1 and MPB#2 - High School Games	\$215/hour	\$220/hour	\$220/hour	TBD
ICE SKATING - PUBLIC				
Indoor MPB#1				
Individual Skating Fee - Youth	\$3	\$4	TBD	TBD
Individual Skating Fee - Adult	\$4	\$5	TBD	TBD
Bonus Card - Youth - 10 sessions	\$20	\$35	TBD	TBD
Bonus Card - Adult - 10 sessions	\$30	\$45	TBD	TBD
Season Pass - Youth or Adult	\$75	\$80	TBD	TBD
Skate Rental Fees (all sizes)	\$3/pair/session	\$3/pair/session	TBD	TBD
Skate Sharpening (per pair)	N/A	\$7/pair		
MEMORIAL BENCH	\$1,700	\$1,700	TBD	TBD
SHOOTING RANGE				
Shooting Range Pass entitles owner to use the range during public shooting hours for the calendar year. Season: The Shooting Range Park season extends from the beginning of May to the opening of the gun deer season each fall. The park is closed from the opening day of gun hunting season until the end of April. Daily Shooting Fees: (rifle, pistol, shotgun, archery) The fee entitles each rifle or pistol shooter to the use of a target backing and stake. There is no fee for non-shooting park visitors. Adult supervision is required for shooters under 14 years of age.				
Annual Shooting Range Pass (12 & older)	\$45.00	\$45.00	TBD	TBD
Daily Fee (12 & older)	\$5.00	\$5.00	TBD	TBD
Youth Under 12 Daily Fee	FREE	FREE	TBD	TBD
SKIING				
Season: Open December through March, weather and snowfall permitting. Pass required for Nine Mile Forest Recreation Area. Definitions Child: under 12, Youth: 12-17, Adult: 18+, Senior: 60+, *Family - One or two adults and their youth. The adult(s) must be the parent or legal guardian of the youth(s). All adults and youth must reside at the same address. Notes: Children under 12 ski and snowshoe free. The purchase of an annual ski season pass includes the use of snowshoe trails. Season passes will be discounted if purchased before November 30.				
Nine Mile Cross-Country Ski Rates				
Annual Pass - Youth	\$65	\$67	TBD	TBD
Annual Pass - Adult	\$110	\$113	TBD	TBD
Annual Pass - Senior	\$75	\$77	TBD	TBD
Annual Family* Discount	1st Adult Full Price, 2nd Adult 40% off. 1st Youth Full Price, additional Youth 40% off.			
Annual Pass Replacement Ski	\$10	\$10	TBD	TBD
Night (after 5pm) - Youth	\$6	\$6	TBD	TBD
Night (after 5pm) - Adult	\$8	\$8	TBD	TBD
Night (after 5pm) - Senior	\$7	\$7	TBD	TBD
Night Self Register permit (during hours chalet is closed)	\$6	\$6	TBD	TBD
Daily - Youth	\$9	\$9	TBD	TBD
Daily - Adult	\$13	\$13	TBD	TBD
Daily - Senior	\$11	\$11	TBD	TBD
Daily Self Register permit (during hours chalet is closed)	\$9	\$9	TBD	TBD
Any Consecutive Two-Day - Youth	\$15	\$15	TBD	TBD
Any Consecutive Two-Day - Adult	\$22	\$22	TBD	TBD
Any Consecutive Two-Day - Senior	\$18	\$18	TBD	TBD
Equipment				
Daily Equipment Rental Full Day - over 12 - Skis, boots and poles	\$15	\$16	TBD	TBD
Daily Equipment Rental Full Day - over 12 - Skis and poles	\$10	\$11	TBD	TBD
Daily Equipment Rental Full Day - over 12 - Boots	\$5	\$6	TBD	TBD
Daily Equipment Rental Full Day - over 12 - Pulk	\$10	\$11	TBD	TBD

	2023	2024	2025	2026
Daily Equipment Rental Full Day - under 12 - skis, boots and poles	\$10	\$11	TBD	TBD
Daily Equipment Rental Full Day - under 12 - skis and poles	\$7	\$8	TBD	TBD
Daily Equipment Rental Full Day - under 12 - Boots	\$3	\$4	TBD	TBD

SNOWSHOEING - Nine Mile Snowshoe Rates

Season passes will be discounted if purchased before November 30.

Annual Pass - Snow Shoe Youth	\$32	\$15	TBD	TBD
Annual Pass - Snow Shoe Adult	\$47	\$20	TBD	TBD
Annual Pass - Snow Shoe Senior	\$39	\$17	TBD	TBD
Replacement Snowshoe Pass	\$10	\$10	TBD	TBD
Daily - Youth	\$5	\$4	TBD	TBD
Daily - Adult	\$7	\$6	TBD	TBD
Daily - Senior	\$6	\$5	TBD	TBD
Daily Self Register permit (during hours chalet is closed)	\$5	\$5	TBD	TBD
Any Consecutive Two-Day - Youth	\$8	N/A	TBD	TBD
Any Consecutive Two-Day - Adult	\$12	N/A	TBD	TBD
Any Consecutive Two-Day - Senior	\$10	N/A	TBD	TBD
Daily Equipment Rental Full Day - over 12 - Snowshoes	\$10	\$10	TBD	TBD
Daily Equipment Rental Full Day - under 12 - Snowshoes	\$7	\$7	TBD	TBD

SKI AND SNOWSHOE GROUP RATES

School Groups - students pass only	\$3 per student	\$3 per student	TBD	TBD
School Groups - students equipment rental	\$6 per student	\$6 per student	TBD	TBD
School Groups - students pass and equipment rental	\$9 per student	\$9 per student	TBD	TBD
School Groups - teachers and chaperones pass	FREE	FREE	TBD	TBD
School Groups - teachers and chaperones equipment rental	\$6 each	\$6 each	TBD	TBD
Organized Youth Group 10+ participants - pass only	\$6 per youth	\$6 per youth	TBD	TBD
Organized Youth Group 10+ participants - pass + equip rental	\$14 per youth	\$14 per youth	TBD	TBD
Other Groups - for ski passes - \$1 discount on each daily pass for groups of 10 or more				
Other Groups - for snowshoe passes - \$.50 discount on each daily pass for groups of 10 or more				

SPORTS FIELDS AND COURTS

Athletic Park

Baseball game without admission fee	\$195/game(pre-tax)	\$200/game(pre-tax)	\$200/game(pre-tax)	TBD
Baseball Games with admission fee		\$200/game (pre-tax) plus 10% of gross admission	\$200/game (pre-tax) plus 10% of gross admission	TBD
Field lights (evenings)	\$27/hour (pre-tax)	\$28/hour (pre-tax)	\$28/hour (pre-tax)	TBD
Non-baseball activities	Negotiable	Negotiable	Negotiable	TBD

Ball Diamonds - County/City Organized Youth

Little League diamonds are contracted for by the Wausau Area Little League organization for spring and early summer use. They may be used by the general public for play at all other times. Field lights at the Oak Island South Field may be used by permission of the Little League organization only, which may charge a fee for their use.

Organized Adult or Commercial or High School Use (3 hr max)	\$34/game	\$36/game	\$36/game	TBD
Organized Youth Use (2 hr max)	\$28/game	\$30/game	\$30/game	TBD
Additional time	\$12/hour	\$14/hour	\$14/hour	TBD

Marathon County Sports Complex Fields

Small/Medium Field Use Fee-2 hr game or practice fee per field	\$27	\$29	\$29	TBD
Large/Championship Field-2 hr game or practice fee per field	\$50	\$52	\$52	TBD
Field Lights (Championship field #12)	\$49/hr	\$50/hr	\$50/hr	TBD
Complete Complex Rental (add'l services negotiated)	\$3000/day	\$3200/day	\$3200/day	TBD
Field Lining	\$125/field	\$130/field	\$130/field	TBD

Soccer Group Per Player Fees

WAYS A - K,1	\$16/player	\$18/player	\$18/player	TBD
WAYS A - 2,3,4,5	\$20/player	\$22/player	\$22/player	TBD
WAYS A - (6-8), (9-12)	\$24/player	\$26/player	\$26/player	TBD
MC United - All age groups	\$37/player	\$39/player	\$39/player	TBD
WCFC - All age groups	\$37/player	\$39/player	\$39/player	TBD

General Sports Fields

Sports fields are contracted for by youth soccer leagues and schools. Outside of these reserved periods they may be used by the general public.

Organized Adult Use or Commercial Use (3 hr max)	\$32/field/game or practice	\$34/field/game or practice	\$34/field/game or practice	TBD
Organized Youth Use or Commercial Use (2 hr max)	\$22/field/game or practice	\$24/field/game or practice	\$24/field/game or practice	TBD
Youth Sports Camp Weekly Use	\$125/field/week	\$130/field/week	\$130/field/week	TBD
Additional time	\$12/hour	\$14/hour	\$14/hour	TBD

Sunny Vale Softball Complex

Ball Diamond Use - High School, Adult, or Comm (3 hr max)	\$34/game/pre-tax	\$36/game/pre-tax	\$36/game/pre-tax	TBD
Ball Diamond Use - Organized Youth Use (2 hr max)	\$28/game/pre-tax	\$30/game/pre-tax	\$30/game/pre-tax	TBD
Field Lights	\$10/game/pre-tax	\$10/hour/pre-tax	\$10/hour/pre-tax	TBD
Tournament Labor and Equipment Fee	\$26/person/hr	\$28/person/hr	\$28/person/hr	TBD
Additional time	\$12/hour	\$14/hour	\$14/hour	TBD

Pickleball/Tennis Courts

Commercial or Private Use	\$12/court/hr	\$12/court/hr	TBD	TBD
---------------------------	---------------	---------------	-----	-----

SWIMMING POOL - Schulenburg, Memorial, Kaiser Pools, Marathon Park Splash Pad

	2023	2024	2025	2026
<u>Marathon Park Splash Pad</u>				
Mornings 10am to 11:00 am. Rental requires contract completion and payment before the rental date. A minimum of one pool attendant must be on duty for every rental.				
Splash pad fee				
Each person	\$1.25	\$1.25	TBD	TBD
Under Age 1	FREE	FREE	TBD	TBD
Public Rental of Splash Pad				
Public Rental - Group Size - (1 - 30) / Rental Fee + Personnel	\$109	\$109	TBD	TBD
Public Rental - Group Size - (31 +) / Rental Fee + Personnel	\$133	\$133	TBD	TBD
<u>Memorial, Kaiser and Schulenburg</u>				
<u>Open Swim Fees - Daily Admittance</u>				
Under Age 1	FREE	FREE	TBD	TBD
Youth (1-17)	\$4	\$4	TBD	TBD
Adult (18-59)	\$5	\$5	TBD	TBD
Senior (60+)	\$2	\$2	TBD	TBD
<u>Open Swim Fees - Daily Admittance after 5pm every day</u>				
Under Age 1	FREE	FREE	TBD	TBD
Youth (1-17)	\$2	\$2	TBD	TBD
Adult (18-59)	\$3	\$3	TBD	TBD
Senior (60+)	\$1	\$1	TBD	TBD
Agency Pass				
Agency Pass Youth per visit (each person)	\$2	\$2	TBD	TBD
Agency Pass Adult per visit (each person)		\$3		
<u>Open Swim Fees - Season Pass</u>				
Season passes will be discounted if purchased before April 1. *Family - One or two adults and their youth. The adult(s) must be the parent or legal guardian of the youth(s). All adults and youth must reside at the same address.				
Wausau Resident Youth	\$35	\$35	TBD	TBD
Wausau Resident Adult	\$50	\$50	TBD	TBD
	1st Adult Full Price, 2nd Adult 30% off. 1st Youth Full Price, additional Youth 30% off.		TBD	TBD
Wausau Resident Family			TBD	TBD
Non-Resident Youth	\$45	\$45	TBD	TBD
Non-Resident Adult	\$65	\$65	TBD	TBD
	1st Adult Full Price, 2nd Adult 30% off. 1st Youth Full Price, additional Youth 30% off.		TBD	TBD
Non-Resident Family			TBD	TBD
Fee to Replace Lost Pass (1st one is FREE)	\$2	\$2	TBD	TBD
<u>Public Rental of Memorial, Kaiser or Schulenburg</u>				
Public Rental requires contract completion and payment prior to pool use.				
Public Rental - No waterslides	375	\$375	TBD	TBD
Public Rental - waterslides	425	\$425	TBD	TBD
TUBING				
Private Rentals - \$450 minimum (\$750-2 tows) or \$8.50 per youth (min 42" tall to 13 yrs.) and \$11.50 per adult whichever is greater. Hours of operation for Private Rentals - Tues., 6pm-9pm, Wed. or Thurs.-11:30am-2pm or 6-9pm, Fri.-11:30am-2pm, Sun.-6pm-9pm				
<u>Sylvan Hill Park</u>				
Daily - Youth (min of 42" to 13 yrs. old)	\$8.00/session	\$8/session	TBD	TBD
Daily - Adult (14 and older)	\$11.00/session	\$11/session	TBD	TBD
Youth 10 Punch Card Daily - Youth - Group of 4	\$30.00/session	\$72	TBD	TBD
Adult 10 Punch Card Daily - Youth - Group of 8	\$58.00/session	\$99	TBD	TBD
Daily - Youth - Group of 12	\$90.00/session	N/A	TBD	TBD
Daily - Adult - Group of 12	\$126/session	N/A	TBD	TBD
TREES				
Payment in lieu of tree replacement/damages	\$400/tree	\$400/tree	TBD	TBD
Assessment Fee (greater than 15in may run through a CTLA assessment)				
Memorial Tree	N/A	\$500/tree		
WINTER STORAGE				
<u>Marathon Park</u>				
The measurement will be made in a straight line from the foremost part of the unit to the rearmost, including the trailer and any attachments or projections and charged fees below based on height of door. Use pricing for year that storage is started. (Ex 2023 pricing is for 2023-2024 Winter Season)				
Tall Storage 9'8"-11'6"	\$2.25/foot/month	\$2.50/foot/month	TBD	TBD
Short Storage 9'7" and below	\$2.00/foot/month	\$2.00/foot/month	TBD	TBD
Late Charge	\$5/day after May 1	\$5/day after May 1	TBD	TBD
<u>Annual Storage - Fair Stands</u> - Fair stands may be stored on an annual basis. These fees should be collected in September for the past year. Fees are charged on the same basis as winter storage. Fair stand storage shall be confined to the Southwest and South Wings of the Exhibition Building.				
Exhib Bld, Cattle Barns 1 & 2, Judging Pavilion	\$2.00/foot/month	\$2.00/foot/month	TBD	TBD
WOODCUTTING PERMITS				
County Forests	\$30	\$30	TBD	TBD
County Parks	\$30	\$30	TBD	TBD
Firewood Cutting Permit Key Deposit	\$50	\$50	TBD	TBD