



MARATHON COUNTY PARK COMMISSION AGENDA

Date and Time of Meeting: Tuesday, December 5, 2023 at 10:30am

Meeting Location: 212 River Dr, Room 5, Wausau 54401

The meeting site identified above will be open to the public. Persons wishing to attend the meeting by phone may call into the telephone conference beginning ten minutes prior to the start time indicated above using the following number: 1-408-418-9388 Access code: 2482 143 4831. When you enter the telephone conference, PLEASE PUT YOUR PHONE ON MUTE!

Park Commission Members -

Commissioners: Dawn Herbst, Jean Maszk, Allen Opall, Rick Seefeldt, Kelly Zagrzebski, Lou Larsen, Vacant

***Marathon County Mission Statement:** Marathon County Government serves people by leading, coordinating, and providing county, regional, and statewide initiatives. It directly or in cooperation with other public and private partners provides services and creates opportunities that make Marathon County and the surrounding area a preferred place to live, work, visit, and do business. (Last updated: 12-20-05)*

***Parks, Recreation and Forestry Department Mission Statement:** Adaptively manage our park and forest lands for natural resource sustainability while providing healthy recreational opportunities and unique experiences making Marathon County the preferred place to live, work, and play.*

Agenda Items

1. **Call to Order**
2. **Public Comment Period – Not to Exceed 15 Minutes – Any Person Who Wishes to Address the Commission Must Provide, Name, Address and the Topic to the President of the Commission No Later than Five Minutes Before the Start of the Meeting. Topics must be relevant to the Committee’s area of jurisdiction.**
3. **Approval of the Minutes of the October 31, 2023 Park Commission Meeting**
4. **Policy Issues for Discussion and Committee Determination**
 - A. Discussion and Possible Action by Committee
 1. Request for Change of Venue from Central Wisconsin Water Ski Show Team Inc. from D.C. Everest Park to Bluegill Bay Park
5. **Operational Functions Required by Statute, Ordinance or Resolution:**
 - A. Discussion and Possible Action by Committee
 1. None
 - B. Discussion and Possible Action by Committee to Forward to the Environmental Resource Committee for its Consideration
 1. Amendments to Chapter 19 of Marathon County General Code (Parks)
6. **Policy Issues for Discussion and Committee Determination for Consideration by Environmental Resources Committee**
 - A. None
7. **Educational Presentations/Outcome Monitoring Reports**
 - A. Project Update (Big Eau Pleine, DC Everest Restroom, Marathon Park, Nine Mile, Rib Falls Reclamation)

8. Announcements

- A. Next Meeting Date & Time, Location – Thursday, January 4, 2023 at 11:00am, 212 River Dr. Room 5, Wausau, WI 54403
- B. Future Agenda Items –

9. Adjourn

Signed /s/ Jamie Polley
Presiding Officer or Her
Designee

Any person planning to attend this meeting who needs some type of special accommodation in order to participate should call the County Clerk's Office at 715-261-1500 or e-mail countyclerk@co.marathon.wi.us one business day before the meeting.

FAXED TO DAILY HERALD

THIS NOTICE POSTED AT THE

COURTHOUSE

(Email/Fax City Pages, Marshfield News, Midwest Radio Group)

Date December 1, 2023 Time 4:15 p.m.

By Jodi Luebbe

Date _____ Time _____

By _____

AGENDA SUMMARY

4A1. Discussion and Possible Action on Request for Change of Venue from Central Wisconsin Water Ski Show Team Inc. from D.C. Everest Park to Bluegill Bay Park

The Water Ski Show Team has requested the use of Bluegill Bay Park for their water ski shows instead of D.C. Everest Park that they currently utilize. Their request is included in the packet. Their proposal includes long and short-term planning items. Staff will provide information to the Commission on current uses of the park, potential conflicts, and any additional information that may be helpful to the Commission.

The Wisconsin River is a body of water which is regulated by all the cities, villages and towns that border the water. Each entity has the same language within their code of ordinances to regulate the water. If the Commission approves the change, all entities regulating the water are asked to amend their municipal code to allow the waterski pick up and drop off locations at Bluegill Bay Park for the purposes of waterski practices and shows. The Park Committee of the City of Wausau will review municipal code 9.21.050, which establishes the controlled areas on the water and allows the Central Wisconsin Water Ski Show Team, Inc. the ability to have a pickup and drop off area at D.C. Everest Park for their practices and shows, on Monday, December 4th.

The Parks Commission is asked to review the request and provide staff with any comments or concerns regarding this change in location for the Central Wisconsin Water Ski Show Team, Inc.

5B1. Discussion and Possible Action Amending Chapter 19 of Marathon County General Code

The proposed amendments to Chapter 19 of Marathon County General Code are recommendations to clarify and enhance a number of ordinances where questions have arisen in the field over the past year. These amendments will allow the ordinances to be more easily enforced by the Recreation Deputies and Assistance Facility Managers. At this time the Park Commission is asked to discuss these amendments, recommend changes if needed and forward on to the Environmental Resources Committee. The proposed amendments have been reviewed by Corporation Counsel.

7A. Project Update

Big Eau Pleine: The archery only hunt began on November 15. To date we have had 4 people register their harvest with us. 3 bucks and 1 doe were harvested. We did also find one instance of a buck harvest where the body of the deer was left and the head was removed.

DC Everest: Restroom has been constructed. Still waiting on contractor to install water and sanitary lines.

Marathon Park: Snow bars were installed on the roof of MPB #2 to help mitigate snow buildup on the flat roof section between ice sheets. Ice operations are routine at this point.

Nine Mile: Garage door and room heating project is complete. Staff completed the installation of the snowshoe signage project.

Rib Falls Reclamation: County Materials has completed all of the site grading. Final work and seeding will be completed in the spring.

DRAFT
MARATHON COUNTY PARK COMMISSION

Date and Time of Meeting: October 31, 2023 at 10:30am Location: Room 5 at 212 River Dr., Wausau WI 54403

Park Commissioners present: Dawn Herbst, Jean Maszk, Allen Opall, Rick Seefeldt, Kelly Zagrzebski-(via Webex)

Excused: Lou Larson

Staff present: Jamie Polley-Parks, Recreation and Forestry Director, Andy Sims-Assistant Director of Operations, Tom Lovlien-Forest Administrator

1. Call to Order – President Seefeldt called the Park Commission meeting to order at 10:30 am. Official notice and the agenda for the meeting was posted publicly in accordance with the State statutes.

2. Public Comment – none brought forward.

3. Approval of the Minutes of the October 3, 2023 Park Commission Meeting – Motion by Maszk, second by Herbst to approve the October 3, 2023 meeting minutes. Motion **carried** by voice vote, vote reflected as 5-0.

4. Policy Issues for Discussion and Committee Determination

A. Discussion and Possible Action by Committee

1. Use Regulations for Marathon Park and the Campground – Polley explained that Marathon Park is central to the county and to the City of Wausau. The department follows different ordinances for county parks than for city parks. However, the department has tried to mirror the park ordinances in all areas possible. The City of Wausau made an ordinance change that will not allow drinking in the city parks before 4:00pm except for permitted events. This ordinance will take effect in January of 2024 and will be reviewed after one year. The Commission may want to consider mirroring this ordinance at Marathon Park and DC Everest Park which are the two county parks in the city limits. There haven't been issues with the general public, but there have been groups of people engaging in daily drinking behavior that bring harassment of local park goers, safety concerns and increased litter. Staff believes Marathon Park will see a change if the city ordinance isn't mirrored there or some other regulations are set. Staff is also considering making Marathon Park an RV (wheeled camping units) campground only, except for during the Fair. Another idea is to have the campground be pre-registration only and not allow self-registration. With pre-registration, payment is made for the entire stay before camping. This would help with some non-payment issues and campground restroom issues. Discussion followed. Members expressed interest at making the park pre-registration only and not going to a complete RV campground yet. Polley said staff will work on language for just the two county parks in the city limits to mirror the city ordinance and the details to make Marathon Park a pre-registration campground only.

5. Operational Functions Required by Statute, Ordinance or Resolution:

A. Discussion and Possible Action by Committee - None

B. Discussion and Possible Action by Committee to Forward to the Environmental Resource Committee for its Consideration - None

6. Policy Issues for Discussion and Committee Determination for Consideration by Environmental Resources Committee

A. Review and Consider Entering into an Agreement with the DNR on the Lake States Forest Management Bat Habitat Conservation Plan – Polley explained that various bat species because of white nose syndrome disease became listed as federally endangered on March 31 and WCFA has been working with DNR on how to continue to manage (harvest) the forests. Signing on to the Lake State Bat Conservation Plan, is not a requirement, but is an easy way to receive incidental take coverage and be sure Marathon County forests and parks are in compliance with the Federal Endangered Species Act with respect to federally listed bat species. Staff have been working with the DNR on the landowner agreement which includes forested areas of the county forests and parks. Lovlien recommends the Committee approve the agreement and forward the recommendation to the Environmental Resources Committee to sign on to the Lake States Forest Management Bat Habitat Conservation Plan. **Motion** by Opall, second by Herbst to approve the agreement with

DNR on the Lake States Forest Management Bat Habitat Conservation Plan and forward this on to the Environmental Resource Committee. Motion **carried** by voice vote, vote reflected as 5-0.

7. Educational Presentation/Outcome Monitoring Reports for Discussion

A. Project Update – Big Eau Pleine – South parking lot was paved and shouldered with the assistance of the Highway Department. Courthouse – Unhoused belongings located by Facilities staff, Parks was consulted on current protocols. DC Everest Restroom – Restroom has been constructed. Dells of Eau Claire – Camping closed on 10/31. Duane L. Corbin Shooting Range – New staff have been hired and the range is getting busy. The range will be open every day in November until firearm season. Marathon Park – Boilers were replaced at East Gate Hall. Rink 2 went in on 10/23, one week earlier than normal. McMillan Marsh – Met with partners to discuss status of current MOA and clarify roles and responsibilities. Nine Mile – Memorial planting completed. CWOCC storage area completed per agreement. Eagle Scout installed snowshoe signage on 10/27 and CWOCC will be installing the permanent Fat Tire Biking trail signage in November. Peoples Sports Complex – Scheduled for the next week. Rib Falls Reclamation – County Materials is currently working on the grading plan. This will continue into 2024. Seeding of the site will take place in 2024. Winterization – Water winterization is underway, we are shutting water off to all shelters and closing most of the remaining flush restrooms. Vault toilets will remain open as long as we have staff to maintain them. We will be removing the fishing pier and Kayak launch at DC Everest tomorrow as well. We will also be removing tennis nets and pickleball nets.

B. Misconduct of the Governor’s Snowmobile Council Letter – The Wisconsin County Forests Association (WCFA) sent a letter to Governor Evers and the Secretary-Designee of the Department of Natural Resources noting in detail numerous issues that are causing concern. In particular, potential conflict of interest among Council members and possible failure to comply with statute, code and Council guidelines.

8. Announcements

A. Next Meeting Date & Time, Location – Tue., December 5, 2023 at 10:30am, 212 River Dr., Rm.5, Wausau, WI 54403

B. Future Agenda Items – none brought forward

9. Adjourn - Motion by Maszk, second by Herbst to adjourn the meeting at 11:30am. Motion **carried** by voice vote, vote reflected as 5-0.

Request for Additional Services

Purpose: The Wausau & Marathon County Parks, Recreation, and Forestry Department has a desire to always provide high quality recreational services and facilities. With restricted financial and personnel resources the Department needs a process to evaluate requests for additional services. Additional services being defined as additions to programs and facilities or new programs and facilities.

In order to fully evaluate and stimulate thought on the complete aspects of additional services, please provide the Department with a request that includes the following (all items may not pertain and may not be known by requestor):

- Please describe program or facility where additional services are being requested.

Bluegill Bay County Park.

- Please describe additional services/facility being requested.

Moving the Water Walkers Show Team ski site from DC Everest Park to Bluegill Bay Park and creating a premier ski site capable of hosting tournaments such as the division II nationals, flaunt-it swivel ski competition, and world record "big pull" attempts. This site would ideally include a permanent building near the show area/water for the team to store ski equipment, concession equipment and to sell concession products, have electricity, flushable bathrooms, and running water all in the same building. The site would have a concrete slab stage area, asphalt walkways, seating, and a sandy section of shoreline area without rocks for the skiers and public to easily get in and out of the water.

- Why do you think this additional service/facility is needed?

The team has outgrown the DC Everest ski site and we are seeking to find a better-suited site that can accommodate a higher quality ski show for the community. Also, the DC Everest site is too narrow to have a ski jump in the channel, a major part of any ski show. We now have about 100 active members and about 50 less active members. We have also been competing annually at the Wisconsin State Waterski Show tournament in Wisconsin rapids with a 2021 1st place win in division 3.

Ideally, I would like to see the team ski exclusively at a Wausau location. (We currently also ski on Lake Dubai in Portage County). We would also move our ski jump to Wausau from its current location on Lake Dubai. Part of the reason for wanting to ski exclusively at a single Wausau location is that we will have more time for practice to work on developing the team members' skills and our team will further grow because the individual level of commitment required and team operating costs will be reduced.

We will also be able to and would like to bring commerce and tourism to the area by having the capabilities to host tournaments and events. The 2021 division II national tournament hosted in Shawano brought in 53 individual competitors and 9 ski teams from around the country (mostly the Midwest) for a 3 day event. Including participants, family, and judges I estimate more than 1,000 people were brought into the city for a long weekend.

- What exactly is being asked of the Department (funding, maintenance, construction)?

Help with planning, funding, construction, maintenance, etc. The team is willing to help with this as much as possible. We have a local contractor on the team that lives in Rib Mountain. We also have some experience with grant writing and can provide labor for some tasks.

- What are the total costs for the additional services/facilities (not only initial costs but future costs)?

\$500,000 estimated total project cost. The team would provide, own, maintain, and insure all the docks, jump, and lifts that are intended for the team's use. I don't want the cost to prevent this from

becoming a reality, lets discuss what is possible. It could be possible for the team to start skiing at Bluegill, instead of DC Everest, as early as 2023 without much site improvement. The expensive part of the plan is creating the premier site capable of tournament hosting, and the ski storage building/concession pavilion.

- How would it be funded (what is the County/City being asked to contribute, what is the group willing to contribute, grants, donations, etc.)?

Funding could be from a combination of grants, private and team contributions, Marathon county, and Rib Mountain/Wausau.

- Who will provide maintenance in the future (will it be turned over to the Department upon completion, will there be maintenance funds put aside, group to provide some maintenance, who repairs damage, etc.)?

The park department would ideally be responsible for future maintenance. Some areas of the building and improvements could be planned for other public benefits as well, not exclusively for the ski team. Some areas would need to be team exclusive areas such as the equipment storage and concession storage area.

- What are the expectations of the County/City once it is complete?

Maintain the building and site no differently than any other park property.

- What is the timeline for completion?

Phased completion. 5 to 8 years. Starting in 2023.





F SURVEY

162.7'

162.14'

16.37'

109.8'

161.65'

168.15'

31.27'

100'

25'

151.85'

30'

Back Dock

Main Dock

East Dock

Asphalt walkway

Stage 80' concrete

sandy beach

seating

seating

Team storage building, pavilion, concessions, bathroom, water

300' showcourse

Show Boat Path

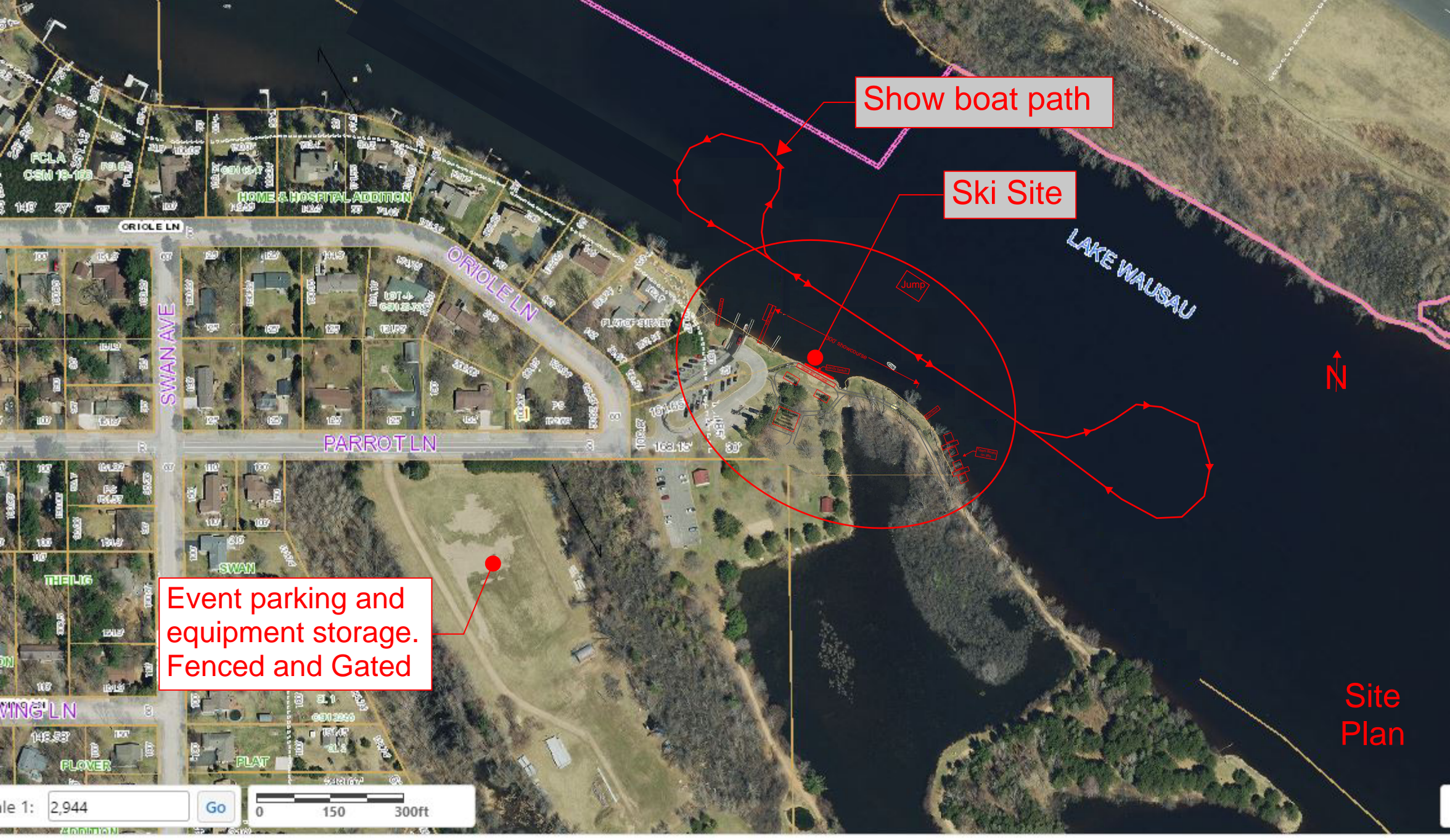
Jump

N

Asphalt walkway

Team Boats on lifts

Site Plan Details



Show boat path

Ski Site

Event parking and equipment storage. Fenced and Gated



Site Plan

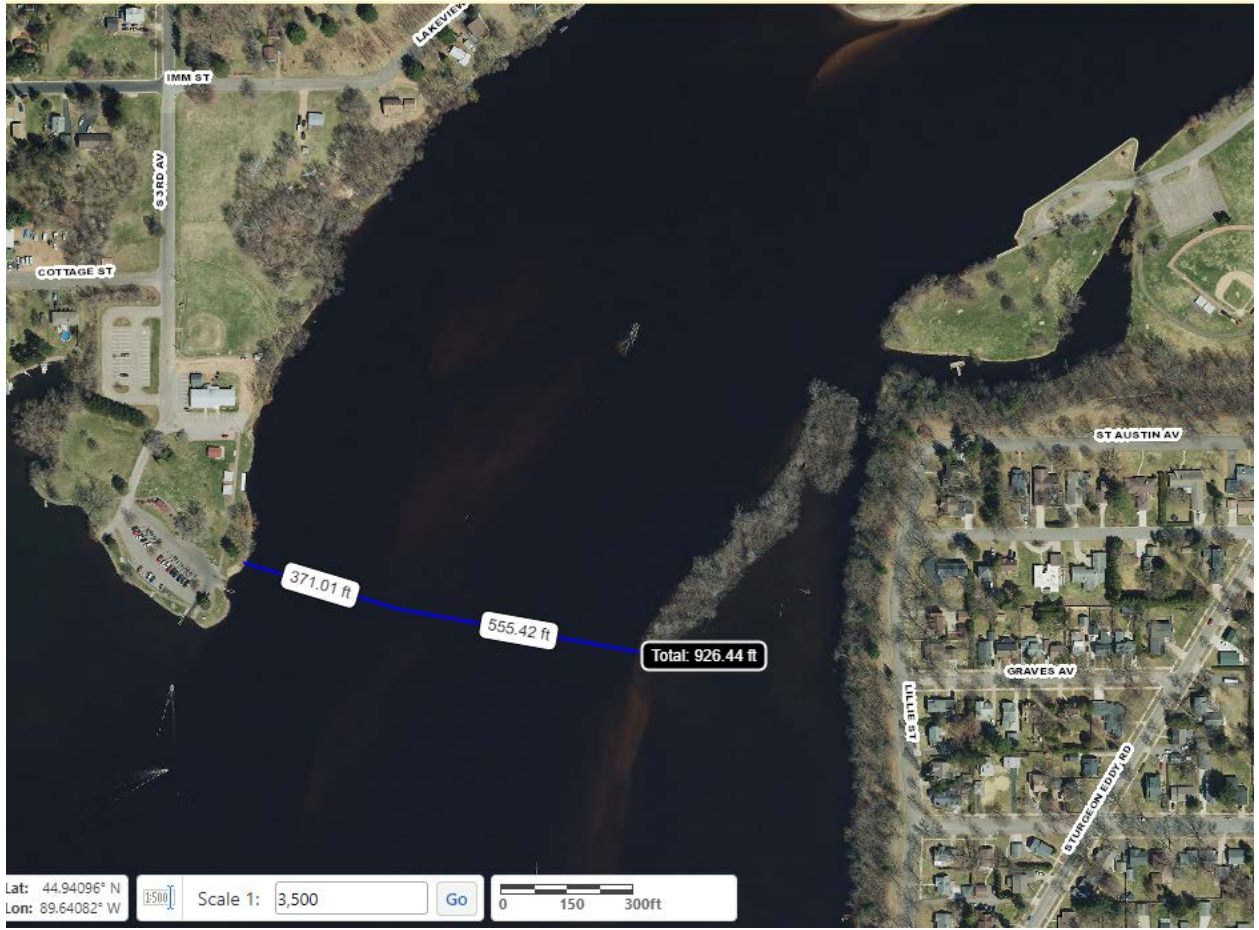












9.20.030 Pickup and drop area.

There is designated a water ski (pickup and drop area) in the Wisconsin River on the southeasterly side of D.C. Everest County Park ~~Bluegill County Park~~ for the water ski club authorized by the Park Commission to conduct water ski practices and performances.

(Ord. 61-5404, § 1, 2009, File No. 87-0532; Ord. 61-5176, § 1, 2002, File No. 87-532; Ord. 61-4616, § 1, 1987.)

9.21.050 Controlled areas.

The following areas are (slow-no-wake) areas:

- (a) On the Big Rib River beginning at the upstream (west) edge of the U.S. Highway 51 southbound bridge and proceeding downstream (east) to a line 600 feet downstream (east) of the U.S. Highway 51 northbound bridge;
- (b) On the Big Rib River beginning at a point 2,400 feet upstream of the confluence of the Little Rib River (also described as the common corner of Sections 32 and 33, T29N, R7E and Section 4 and 5, T28N, R7E) and proceeding upstream (westerly) 3,100 feet;
- (c) Under County Highway N Bridge;
- (d) The Bluegill Bay County Park lagoon;
- (e) Within 100 feet of the boat launches at D.C. Everest County Park in the City, ~~except there is designated a water ski (pickup and drop area) in the Wisconsin River on the easterly side of D.C. Everest County Park for the Wausauqua Water Ski Shows, Inc., during times of practice and performance and for the general public at all other times;~~
- (f) Within 100 feet of the boat launch at Oak Island Park in the City;
- (g) Within 150 feet of the boat launch and/or dock at Memorial Park in the City;
- (h) Within 200 feet of the boat launch on Kort Street in the village of Rothschild commonly known as St. Therese's;
- (i) Within 150 feet of the shoreline beginning at the boat launch pier and proceeding southeast approximately 250 feet to the lagoon inlet at Bluegill Bay County Park in the town of Rib Mountain except where there is designated a water ski pickup and drop area in the Wisconsin River for the Central Wisconsin Water Ski Show Team Inc., during times of practice and performance ;
- (j) From the dam on the Eau Claire River proceeding west to a line 75 feet west of the Grand Avenue Bridge.

(Ord. 61-4816 (1(part), 1993; Ord. 61-4643 (1(part), 1988.)

(Ord. No. 61-5880 , § 3, 3-23-2021)

Underlined = Added Text

Strikethrough = ~~Deleted Text~~

Chapter 19 PARKS AND RECREATION

MARATHON COUNTY PARKS

Sec. 19.01. General administration and terms.

- (1) *Terms.*
 - (a) *Park Commission.* The term "Park Commission", composed of seven members, refers to the committee of jurisdiction for Marathon County parklands, hereafter referred to as the "Commission" under this subchapter.
 - (b) *County park.* The terms "County park" and "park" mean all lands and water previously and subsequently acquired by the County for park or recreational purposes or placed under the jurisdiction of the Commission and including without limitation, parks, beaches, and privately owned lands, the use of which has been granted or leased to the County for park, recreational or like public purposes under this subchapter.
- (2) *Scope.*
 - (a) The provisions of this subchapter shall apply to all lands, structures and property owned, leased or administered by the County and under the management, supervision and control of the Commission, except that Marathon Park shall be subject to the right of the Marathon County Agricultural Society to hold an annual fair.
 - (b) The Commission is organized pursuant to §§ 27.02 through 27.05, 27.075 and 27.08, Wis. Stats., and any subsequent amendments thereto.
- (3) *Director.* The Wausau and Marathon County Parks, Recreation, and Forestry Department, whose head shall be the Director, shall be the administrative or executive agency of the Commission. The Director shall be the authorized agent of the Commission as referred to in this subchapter.
- (4) *Closing hours.* No person shall enter or be in any County park between 11:00 p.m. and 6:00 a.m., except registered campers in or en route to designated campgrounds; persons transporting watercraft to and from designated boat landings are permitted at any hour.
- (5) *Fees, charges and deposits.*
 - (a) *Fee schedule.* No person shall use any facility, shelter, land or area for which a fee or charge has been established by the Commission without payment of such a fee or charge.
 - (b) *Deposits.* Shelters or facilities will be reserved upon completion and approval of a use agreement; payment of the rental fee; and payment of the security deposit and/or key deposit if applicable. The key and security deposit will be subject to retention, in whole or part, by the Commission, if the key is not returned; the shelter or facility has been subjected to abuse; inadequately cleaned; or used in violation of current facility use regulations.
- (6) *Additional rules, permits, exceptions.*

-
- (a) *Additional rules.* Rules and regulations may be made governing the use and enjoyment of all lands, structures and property owned, leased or administered by the County and under the management, supervision and control of the Commission. Any person who shall violate such rules or regulations or who refuses to subject himself or herself thereto may be excluded from the use of such facilities. No person shall disregard posted rules and regulations or engage in any activity contrary to posted notice.
 - (b) *Permits.* Any person to whom a permit has been issued by the Director shall be bound by the provisions of all ordinances of Marathon County as fully as though the same were inserted in each permit. Any permit issued by the department must be displayed as directed by the Commission.
 - (c) *Exceptions.* Nothing in this chapter shall prohibit or hinder the Commission, its Director, Supervisors, Park Managers, Employees or other authorized agents or any law enforcement officers from performing their official duties.
- (7) *Public utilities and private construction.*
- (a) *Public utilities.* The location of all sewers and receivers, gas pipes, water pipes, stopcock boxes, hydrants, lamp posts, telegraph, telephone and electric power posts and lines, manholes, conduit and pumps within any park or parkway shall be subject to the jurisdiction and control of the Commission; and their construction, erection, repair or relocation shall be undertaken only after written permission is received from the Commission.
 - (b) *Private construction.*
 1. No curb, whether stone, concrete or grass, shall be cut for the purpose of constructing a private driveway across any parkway border nor for any other purpose, without written permission of the Commission.
 2. The location, width, grade and construction of all paths, driveways and roadways across any sidewalk border along any parkway shall be subject to the approval of and constructed only after written permission is obtained from the Commission.
 3. Every person who receives a permit to open a trench, cut a curb or deposit materials in or upon any park or parkway shall at all times after such work has been commenced or materials deposited and until the same has been completed and all accumulations of materials resulting from such work have been removed so guard and protect the same that persons driving or passing along the roadway or sidewalk in the vicinity of the place where the work is being done shall not be likely to meet with any accident therefrom; and shall from sunset to sunrise while such work is in progress cause the same to be securely fenced and guarded by a warning light or lights placed in a conspicuous position and so secured that the same shall not be extinguished.

(O-7-01; O-8-03; O-16-13; O-4-19; O-05-21; O-29-23)

Sec. 19.02. Public meetings and sales.

- (1) *Public meetings.*
 - (a) Any person desiring to hold a public meeting of any kind in any park shall first obtain a permit from the Commission or its authorized agent. The permit shall be applied for not less than 48 hours prior to the scheduled event.
 - (b) Permits will be granted for the purpose of holding any lawful public assembly in accordance with published regulations governing the reasonable use of parks.
- (2) *Sales.* No person shall sell or offer for sale any goods, merchandise or service in any park, except as authorized by the Commission and when holding proper licenses.

-
- (3) *Soliciting boat rides.* No person shall use in any manner the dock, pier, wharf, boat landing, mooring facilities in or the waters in or immediately adjacent to any County park for the purpose of soliciting rides of any kind unless authorized by the Commission.
 - (4) *Posting bills or advertising.* No person shall distribute or post bills or advertisements in any park without written consent of the Commission.

(O-7-01; O-4-19)

Sec. 19.03. Personal conduct and nuisances.

- (1) *Personal conduct.* No person shall engage in violent, abusive, indecent, profane, boisterous, unreasonably loud or otherwise disorderly conduct under circumstances in which the conduct tends to cause or provoke a disturbance in any County park.
- (2) *Property of others.* No person shall disturb, molest or remove the property or personal effects of others.
- (3) *Unreasonable noise.* No person shall make or cause to be made any unreasonably loud sounds or noises under circumstances which tend to annoy or disturb others. No person shall operate any sound truck, loudspeaker, generator, chainsaw, or other device that produces excessive, loud or unusual noises within any County park except upon written permit issued by the Commission or its authorized agent upon such terms and conditions as will ensure that the public peace and order will not be unreasonably disturbed.
- (4) *Jumping and diving.* No person shall jump, dive, or otherwise launch themselves from any bridge, approach, rope or other device similar to a rope swing thereto into any body of water within any County park.
- (5) *Swimming and wading.* No person shall swim or wade within 50 feet of boat launch ramps at any County park except for the express purpose of launching or landing watercraft.
- (6) *Docks and piers.* No person shall use docks or piers adjacent to any boat landing in any manner as to obstruct or hinder the launching, landing, loading or unloading of watercraft.
- (7) *Obstructing.* No person shall knowingly obstruct an employee or any law enforcement officer while the employee or law enforcement officer is doing any act in an official capacity and with lawful authority. Obstruct includes without limitation knowingly giving false information with intent to mislead the employee or law enforcement officer in the performance of duty including the issuance of any citation.
- (8) *Smoking.* No person may smoke in, or within 50 feet of, the following areas of a County park:
 - (a) Playgrounds.
 - (b) Sports fields and sports field seating areas.
 - (c) Swimming areas and all inside fenced areas surrounding swimming areas.
 - (d) Marathon County Sports Complex located at 602 E. Kent Street.
 - (e) Those park areas temporarily posted as no smoking by the Director or his or her designee during Parks Department sponsored events.
 - (f) Those park areas temporarily posted as no smoking by the Director or his or her designee during an approved event held within the park area and for which no smoking has been requested by the event organizer or sponsor.
- (9) *Alcohol Consumption.* No person shall possess or consume intoxicating liquor or fermented malt beverages in or upon DC Everest Park and Marathon Park except as follows:
 - (a) Between the hours of 4:00pm and 11:00pm.

(b) During special events approved by the Commission

(c) At campsites, park shelters or facilities reserved through the Wausau and Marathon County Parks, Recreation & Forestry Department.

(10) *Golf Carts*. No person may operate any golf cart, defined as an unmodified manufacturer specification vehicle whose speed does not exceed 20 miles per hour and is designed to carry one or more person and equipment to play the game of golf, on any lands under the management, supervision and control of the department unless posted otherwise or given written permission from the department in conjunction with an approved event.

(O-7-01; O-8-03; O-16-13; O-05-21; O-29-23)

Sec. 19.04. Destruction, entry, cleaning and refuse.

(1) *Destruction and entry.*

(a) *Deface, remove or destroy*. No person shall disturb, molest, deface, remove or destroy any trees, shrubs, plants, or other natural growth, or natural or archeological feature; disturb or remove shoreline rip-rap; carve on any rocks, archaeological or geological features, signs, walls or structures; drive nails in trees or move, deface or vandalize in any manner any structures including buildings, signs, fences, tables or other County property. Edible fruits, nuts, wild mushrooms and wild asparagus may be picked or gathered without a permit, except on State Natural Areas.

(b) *Prospecting prohibited*.

1. In this subsection, the term "prospecting" means exploring for the presence of rocks, minerals or fossils by means of relocation, removal or displacement of soil or other organic or inorganic materials.
2. No person may collect, or engage in prospecting for, rocks, minerals, or fossil materials located on any Marathon County Park land or the bed of any body of water located thereon.

(c) *Entry and manipulation*. No person shall enter in any way any building, installation or area that may be under construction or locked or closed to public use or molest or manipulate any water control structure, dam or culvert or enter or be upon any building, installation or area after the posted closing time or before the posted opening time or contrary to posted notice in any County park.

(2) *Cleaning and refuse.*

(a) *Washing*. The washing of cars, persons, pets, cooking utensils or clothing is prohibited in any lakes, streams or on any picnic grounds, playgrounds, beaches, recreation areas, boat landings, parking lots or roadways or within 50 feet of any pump, fountain or drinking water outlet in any County park. The washing of persons, cooking utensils and clothing shall be permitted at designated campgrounds or at other authorized and posted locations.

(b) *Fish and game cleaning*. No person shall clean, butcher, scale or skin any fish, game, livestock or poultry in any County park except that fish may be cleaned at designated fish cleaning tables provided for such purposes. Refuse from such cleaning operations shall be suitably wrapped or packaged and deposited in the refuse containers provided for that purpose.

(c) *Refuse*.

1. No person shall deposit or leave any garbage, sewage, or other waste material upon any body of water or other area in any County park except in an appropriate solid waste or recycling container.

-
2. No person shall upset or turn over the contents of any solid waste or recycling container in any County park.
 3. Charcoal residue or wood ash shall be left in a grate or fireplace until cool or placed in receptacles provided for such purposes.
 4. No person shall deposit or leave any residential or commercial belongings or waste material in any waste receptacle or other area in any County park.
- (d) *Dispensing beverages.* No vendor shall dispense beverages in any cup, glass, flask, bottle or other container made of glass or other shatterable material designed or used for holding a beverage at any outdoor fair, game, attraction, event, or public function. This prohibition does not apply to vendors at any of the above-listed activities serving sit-down meals where the beverage containers are washed and reused. All beverage vendors at any of the above-listed activities shall use recyclable beverage containers and provide adequate collection facilities for the recycling of all beverage containers so used.

(O-7-01; O-8-03; O-17-14; O-05-21; O-38-22)

Sec. 19.05. Vehicles.

(1) *Vehicular traffic.*

- (a) No person shall operate any vehicle at a speed in excess of 15 mph or contrary to official traffic signs in any County park or County trail unless governed by § 7.125 of Marathon County Code of Ordinances.
- (b) No person shall operate a motor vehicle in an abusive, boisterous, unreasonably loud or otherwise disorderly manner under circumstances which tend to cause or provoke a disturbance. Such conduct shall include, but not be limited to, conduct which tends to disturb, annoy or endanger one or more persons because of unnecessary or deliberate spinning of wheels, squealing of tires, revving of engine, blowing the horn, causing engine to backfire or causing vehicle while commencing to move or in motion to raise one or more of its wheels, tracks or skis off the ground or operate at an unreasonable or imprudent speed in any County park.
- (c) No person shall operate or park any motor vehicle except as provided in this subchapter, upon any bridle path, hiking trail, beach area, playground, picnic area or any other area other than established roads, parking areas, boat ramps and service areas or contrary to posted notice or within any park seasonally closed to vehicular traffic.
- (d) No person shall operate a snowmobile as defined in § 340.01(58a), Wis. Stats., in any County park, except on snowmobile trails approved by or for events authorized by the Commission.
- (e) No person shall operate an ATV or UTV as defined in § 340.01(2g), Wis. Stats., in any County park, except on established roads.
- (f) No other motorized vehicles other than an ATV or UTV shall be operated on a designated ATV/UTV trail on park property or County trail with the exception of authorized personnel in the performance of their duties.
- (g) No person may operate a motorized vehicle on County property when rules pertaining to the operation of motorized vehicles are posted by the Commission or its authorized agent.

(2) *Parking.*

- (a) No person shall park, stop or leave standing, whether attended or unattended, any vehicle, obstruction or watercraft:

-
1. In any manner as to block, obstruct or limit the use of any road, trail, sidewalk, parking lot, boat landing, waterway or winter sport facility.
 2. Outside of any area provided for such purposes when it is practical to use such areas.
 3. Contrary to posted notice.
- (b) No person shall park, stop or leave standing any vehicle, whether attended or unattended, whether temporarily or otherwise, in areas reserved, by official traffic signs indicating the restriction, for vehicles displaying registration plates or identification cards which designates the vehicle as a vehicle used by a physically disabled person as defined in § 346.505, Wis. Stats.
- (c) No person shall park, stop or leave standing any vehicle, whether attended or unattended, whether temporary or otherwise, in areas designated as fire lanes with signs or marked curbs.
- (d) The forfeiture for a violation of paragraph (a) shall be \$10.00. The forfeiture for a violation of paragraph (b) or (c) shall be \$30.00. In the event that the violator fails to appear in court on the date and time indicated on the citation, or fails to enter a "not guilty" plea by mail by the court date, or fails to stipulate to the violation by posting the forfeiture required in the office of the Marathon County Clerk of Courts, at the address indicated on the citation by the court date, said forfeiture shall be ordered by the court in default and shall be increased by the amount of \$30.00 as a penalty for failure to pay in a timely fashion, for a total forfeiture of \$40.00 for a violation of paragraph (a) and \$60.00 for a violation of paragraph (b) or (c).
- (e) The provisions of § 345.28, Wis. Stats., and any subsequent amendments thereto, are specifically adopted and incorporated herein by reference. If the alleged violator fails to pay the amount of the forfeiture as provided herein, or to appear in court, the County may take any or all of the actions authorized under § 345.28, Wis. Stats.
- (f) The registered owner of a vehicle is deemed to have authorized the parking of a vehicle found parked in violation of this subsection.
- (3) *Abandoned vehicles.* No person shall leave any vehicle unattended without approval of the Commission or its authorized agent for more than 48 hours under such circumstance as to cause the vehicle to reasonably appear to have been abandoned. An abandoned vehicle shall constitute a public nuisance and be subject to removal at the owner's expense. Removal of the vehicle shall not relieve the owner or the operator of the vehicle from any penalty incurred because of such violation.

(O-7-01; O-8-03; O-05-21; O-38-22)

Sec. 19.06. Fires, fireworks, firearms, projectiles.

- (1) *Fires.*
- (a) Marathon Park.
1. Except for cooking with charcoal, gas or liquid fuel on commercially manufactured portable metal grills or stoves, there shall be no open fires in Marathon Park, except as provided in paragraph 3.
 2. Portable metal grills and stoves acceptable in Marathon Park shall include only commercially manufactured devices intended for cooking. Homemade devices or manufactured portable fire places or other manufactured devices, which have been modified by the user, shall not be used.
 3. Fires other than those provided for in paragraph 1 may be made by permit only. Said permit must be obtained from the Wausau City Fire Department pursuant to the Wausau Municipal Code.
- (b) Other County Parks.

-
1. No person shall start, tend or maintain any fire or burn any refuse except at designated fireplaces, fire rings or permanent grills within any county park other than Marathon Park.
 2. Fires for cooking or heating may be made in portable metal stoves, heaters, grills or fireplaces at picnic areas or designated campgrounds.
- (c) No person shall abandon any fire or leave any fire unattended or throw away any matches, cigarettes, cigars, pipe ashes or embers without first extinguishing them. No person shall start, tend or use in any manner any fire contrary to posted notice in any county park.
- (2) *Fireworks.* No person shall possess or discharge any fireworks regulated by § 167.10(1), Wis. Stats. in any County park except that exhibitions of fireworks given under the direction or by the permission of the Commission or its authorized agent are permitted.
- (3) *Firearms.*
- (a) No person shall discharge any firearm as defined in § 167.31(1)(c), Wis. Stats., or airgun as defined in § 939.22, Wis. Stats., or any bow in any County park, except that portion of Shooting Range Park north of Four Mile Creek where the use of firearms, airguns or bows is permitted on designated ranges in accordance with posted regulations.
 - (b) Unless other facts and circumstances that indicate a criminal or malicious intent on the part of the person apply, a person is not in violation of, and may not be charged with a violation of, this section for loading, carrying, or going armed with a firearm, without regard to whether the firearm is loaded or is concealed or openly carried.
 - (c) This section does not apply and may not be enforced if the actor's conduct is justified or, had it been subject to a criminal penalty, would have been subject to a defense described in § 939.45, Wis. Stats.
 - (d) No person, except a law enforcement officer, shall enter any building, facility, or location open to the public that is restricted by state law or posted as a no firearms or concealed weapons location while possessing, carrying, or concealing a firearm or weapon, whether with or without a state permit.
- (4) *Shooting range park.*
- (a) No person shall discharge any firearm, airgun or bow in any area within Shooting Range Park not specifically designated for such use or contrary to posted regulations or contrary to verbal orders given by the Rangemaster on duty. This paragraph shall apply to any person discharging any firearm at a rate of fire deemed unsafe in the judgment of the Rangemaster, including bump firing to simulate the discharge of automatic firearms.
 - (b) No person shall possess or discharge any fully automatic or machine gun or load or discharge any firearm deemed unsafe in the judgment of the Rangemaster or load any firearm with or discharge any armor piercing or incendiary ammunition at Shooting Range Park. This paragraph shall not apply to authorized military or law enforcement training exercises.
 - (c) No person shall engage in any sport or activity while in possession of an uncased firearm, airgun or bow which, in the judgment of any law enforcement officer or the Rangemaster, constitutes a safety hazard.
- (5) *Throwing or shooting projectiles.* No person shall throw or shoot an arrow, knife, stone, paintball or other projectile, by hand or any other means, in any County park. This subsection shall not apply to arrows used on archery ranges authorized by the Commission.

(O-17-98; O-7-01; O-8-03; O-10-11; O-16-13)

Sec. 19.07. Animals.

(1) *Animals in public facilities.*

(a) *Restricted.* No person having immediate custody, care or control of a dog or other animal, shall permit said animal to enter and/or remain in any public park building, bathing beach, the Marathon County Sports Complex, the Marathon Park Amphitheater or playground safety surface area in any County park, except assistance dogs or as authorized by the Commission or their designee.

(b) *Definitions.* The following terms shall have the meanings indicated:

Assistance dog. Any dog that has been or is being trained as a guide dog, hearing dog, or service dog. Such terms are further defined as follows:

Guide dog. Any dog that has been or is being specially trained to aid a particular blind or visually impaired person.

Hearing dog. Any dog that has been or is being specially trained to aid a particular deaf or hard of hearing person.

Service dog. Any dog that has been or is being specially trained to aid a person with a disability other than sight or hearing.

(2) *Animals running at large.* No person shall allow a dog or other animal to run at large in any County park. The animal shall be considered as running at large unless it is on a leash no more than 16 feet in length, is in or upon a vehicle, is in or on the property of its owner or another who does not object to the presence of such animal, or is part of a 4-H project, is on a display for judging purposes, is in an itinerant or transient carnival, circus or other like show, is in a dog or cat show or trial, or is part of the program of a public or private educational institution as authorized by the Commission or in designated areas as set by the Commission.

(3) *Howling animals.* No person shall own, keep, possess or harbor a dog or other animal in any County park which by frequent or habitual howling, yelping, barking or wailing disturbs other persons.

(4) *Animal feces.*

(a) The owner or person having immediate care, custody or control of a dog or other animal shall promptly remove and dispose of, in a sanitary manner, any feces left or deposited by the animal upon any County park.

(b) No person shall permit a dog or other animal to be in any County park unless such person has, in his immediate possession, an appropriate means of removing animal feces.

(5) *Horses.*

(a) No person shall ride or use a horse or other beast of burden in any manner in any County park, except on designated bridle trails or for events authorized by the Commission.

(b) No person shall ride or use a horse or other beast of burden in a careless, negligent or reckless manner so as to create a nuisance or to endanger the life, property or person of others.

(c) The use of a horse or other beast of burden to pull a buggy as a means of transportation shall not occur, operate, or park except as provided in this subchapter, upon any bridle path, hiking trail, beach area, playground, picnic area or any other area other than established roads, parking areas, boat ramps and service areas or contrary to posted notice or within any park seasonally closed to vehicular traffic.

(6) *Hunting and trapping.*

(a) *Restricted.* No person shall take, catch, kill, hunt, trap, pursue or otherwise disturb any wild animals or birds in any County park, except:

-
1. Waterfowl, as that term is defined herein, may be hunted from a blind, as that term is defined herein, in accordance with applicable State statutes and applicable provisions of the Wisconsin Administrative Code setting forth regulations of the Department of Natural Resources, placed below the ordinary high watermark, as that term is defined herein, at Big Eau Pleine and Ashley Parks. A blind may be established not more than seven days prior to the opening of the waterfowl hunting season and must be removed by the owner within seven days after the close of the season. Any blind on park property used in hunting waterfowl must bear the name, address, and phone number of the owner affixed permanently to the blind in lettering one inch square or larger.
 2. Archery hunting is permitted in Big Eau Pleine Park only during the open season from November 15 through the Sunday nearest January 6. No special hunting access permit is needed to hunt with a bow or crossbow in Big Eau Pleine Park. All hunting license requirements apply. Archery hunters must:
 - a. Be 100 feet from a designated trail or the center of any established road.
 - b. Be 100 yards from designated use areas such as picnic areas, campgrounds, beaches, and buildings.
 - c. Hunting must take place from an elevated platform of no less than six feet off of the ground.
 - d. Access to the park for the purpose of hunting is allowed starting at 6:00 a.m. or one hour prior to shooting hours until one hour after shooting hours.
 - e. Tree stands. No person shall construct, cause to be constructed, use or occupy any elevated scaffold or other elevated device commonly referred to as a tree stand on any lands owned or under the control of the County, except that portable tree stands may be used, provided that they are completely removed from the tree each day at the close of hunting hours and provided that such portable tree stands are not in any manner bolted, nailed, screwed or fastened to the tree and provided that such portable tree stands cause no permanent or temporary damage to the trees in which they are placed. Portable tree stands may be left in the woods provided that they have the name, address, and phone number of the owner permanently affixed to the stand in the English language and shall be clearly visible and kept legible at all times. Portable tree stands without such identifying information shall be subject to immediate removal by County officials. Portable tree stands may not be brought in prior to the season starting and must be removed by the owner the last day of the archery deer hunting season established by the Wisconsin Department of Natural Resources.
 - f. Trail cameras. No person shall place or use any camera or other device commonly referred to as a trail camera on lands owned or under the control of the County that causes permanent or temporary damage to natural vegetation or other County property. The placement and use of trail cameras are permitted for hunting and wildlife scouting purposes and are prohibited in designated areas of the Big Eau Pleine Park where activity would interfere with other recreational activities and shall include picnic areas, campgrounds, beaches, parking areas and buildings. Trail cameras may be left in the woods provided they bear the name, address, and phone number in the English language of the owner permanently affixed in a manner that is clearly visible and kept legible at all times without moving the camera. Trail cameras without such identifying information shall be subject to immediate removal by County officials. Trail cameras may be chained or locked to natural vegetation and must be removed from Big Eau Pleine Park as stipulated for tree stands in paragraph (e).

-
- g. **High Visibility Clothing.** High Visibility Clothing or Blaze Orange is required for archery only areas during any gun deer season established by the Wisconsin Department of Natural Resources.

- (b) **Definitions.** The following terms shall have the meanings indicated:

Archery hunting. The act of pursuing or taking wild game using a bow and arrow. Bows include crossbows.

Blind. Any permanent structure used in hunting waterfowl, which is not removed at the end of hunting hours each day.

Designated trail. All trails signed for hiking, biking, disc golf and equestrian use.

Ordinary high watermark. The point on the bank or shore up to which the presence and action of surface water is so continuous as to leave a distinctive mark, such as by erosion, destruction or prevention of terrestrial vegetation, predominance of aquatic vegetation or other easily recognized characteristic. Where the bank or shore at any particular place is of such character that it is difficult or impossible to ascertain where the point of ordinary high-water is, recourse may be had to the opposite bank of a stream or to other places on the shore of a lake or flowage to determine whether a given stage of water is above or below the ordinary high watermark.

Waterfowl. Includes wild geese, brant, wild ducks, rails, coots, gallinules, jacksnipe, woodcock, plovers, sandpipers and wild swan.

- (c) **Penalty.** Violations of this subsection shall be punishable as provided in § 19.14 of this chapter relating to hunting and trapping violations.

(O-15-90; O-7-01; O-8-03; O-16-13; O-13-15; O-05-21; O-40-21; O-29-23)

Sec. 19.08. Athletics.

- (1) **Golf and archery.** No person shall use golf or archery equipment within any County park or parkway except upon golf facilities or archery ranges established by the Commission.
- (2) **Roller skates, skateboards, and scooters.** No person shall ride, push or travel upon roller skates, in-line skates, skateboards, or scooters within any public buildings or on any facilities not specifically intended for such use including, but not limited to: tennis courts, benches, tables, bleachers or on docks and piers adjacent to any boat landing within any County park, except in designated areas and in accordance with posted regulations.
- (3) **Ice skating.** No person shall play or practice hockey, broomball or any other games or sports that may interfere with casual ice skaters, when casual skaters are present on outdoor ice skating rinks established by the Commission, except hockey and broomball may be played on designated hockey rinks.
- (4) **Hiking, walking or running on groomed ski, fat tire bike and snowshoe trails.** No person shall hike, walk or run on any designated cross-country ski, fat tire bike, or snowshoe trails during that period of the year when such trails are open, or being groomed for opening, for cross-country skiing, fat tire biking or snowshoeing unless in the case of an emergency or injury.

- (a) **Definitions:** The following terms shall have the meaning indicated:

- 1. **Fat tire bike.** Any bike that has tires that are 3.8 inches wide or larger.
- 2. **Snowshoe.** A flat device resembling a racket, which is attached to the sole of a boot and used for walking on snow.

(O-7-01; O-8-03; O-05-21; O-38-22; O-29-23)

Sec. 19.09. Beaches.

- (1) *Food and beverage.* No person shall carry or consume any food or beverages on any bathing beach or in the water adjacent to any bathing beach in any County park except in designated areas.
- (2) *Boundary buoys.* No person shall disturb or molest a bathing beach boundary buoy or marker in any swimming beach in any County park or moor or cause to be within that area of water enclosed by boundary buoys any boat, raft or craft used to transport persons.
- (3) *Beach athletics.* Except in locations designated for such purpose, no person shall engage in any athletic game or sport or in any activity upon a bathing beach or in the water when injury or inconvenience to others might result therefrom.
- (4) *Bathing dress.* No swimmer or bather shall enter the water or onto any bathing beach unless clothed in a suitable bathing dress or suit.
- (5) *Changing clothing.* No person shall change clothes, except in beach houses or other enclosed places.
- (6) *Fishing.* No person may fish in any marked swimming beach area.
- (7) *Glass containers.* Container made of glass or other shatterable material are prohibited.

(O-7-01; O-05-21)

Sec. 19.10. Camping.

- (1) *Definitions.* The following terms shall have the meanings indicated:

Campground, designated. Any tract of land designated exclusively for camping.

Campground, general. Any tract of land designated for camping by camping parties.

Campground, group. A campground which may be reserved for use by an assemblage of one or more families, nonfamily groups or juvenile groups.

Camping or camp. The use of a shelter such as a tent, trailer, motor vehicle, tarpaulin, bedroll or sleeping bag for temporary residence or sleeping purposes.

Camping party. Any individual, family, or nonfamily group occupying a campsite.

Camping unit. Any single shelter except bedrolls and sleeping bags used for a camp by a camping party.

Campsite. A segment of a campground which is designated for camping use by a camping unit or camping party.

Closed shelter. Any building or structure capable of being closed to public access and reserved for public or private group activities.

Family. A camping party composed of a parent or parents with their unemancipated children.

Individual group. A camping party of not more than five unrelated persons occupying one camp site.

Juvenile group. A camping party composed of not more than ten juveniles under the leadership of an adult.

Nonfamily group. A camping party composed of five or less persons who do not meet the definition of family.

- (2) *Camping regulations.*

- (a) *Camping prohibited.* Camping is prohibited in all County parks, except at designated campgrounds, or other areas authorized by the Commission.

-
- (b) *Designated campgrounds.* Designated campgrounds are those general and group campgrounds in Big Eau Pleine, Dells of the Eau Claire and Marathon Parks.
 - (c) *Camping permit.* No person shall set up camp prior to completing and displaying a camping permit. Marathon Park camping permits are preregistration only and must be obtained through the online registration software prior to occupying the campsite. All camping fees shall be prepaid for the permit period prior to occupying the campsite as provided in subsection 19.01(5)(a) of this chapter relating to a fee or charge established by the Commission.
 - (d) *Camping limited, designated campgrounds.* No person shall camp and no camping unit shall remain in a designated campground for a period greater than 14 consecutive days. The camping unit shall be removed from the property for at least seven days before being eligible to return.
 - (e) *Campsite occupancy.*
 - 1. No more than one camping party shall occupy a single campsite.
 - 2. No camping party consisting of a nonfamily group shall exceed five persons.
 - (f) *Campsite changes.* No camping party shall move from its assigned campsite to another campsite without prior approval.
 - (g) *Camping permit expiration.* All camping permits expire at 3:00 p.m. on the last day of the permit period.
 - (h) *Camping permit extensions.* Extensions within the 14-day limit may be granted on camping permits. Extensions shall be obtained prior to 10:00 a.m. on the expiration date of the permit.
 - (i) *Campsite entry hours.* No camping party shall start setting up or taking down its camping unit between the hours of 11:00 p.m. and 6:00 a.m.
 - (j) *Campsite parking.* No person shall park any motor vehicle outside the parking area designated at each campsite and not more than two motor vehicles are permitted to any campsite except that as many as five motorcycles are permitted for members of a camping party registered as a nonfamily group.
 - (k) *Campsite reservations.* Campsite reservations will be accepted only for group campgrounds and designated campsites within a general campground.
 - (l) *Camping party membership.* No person shall obtain a camping permit for use by a camping party of which he is not a member in a general campground.
 - (m) *Campsite capacity.* No more than two sleeping units may occupy a campsite. Two units may consist of one travel trailer, pickup truck camper or motor home and one tent or two tents with no camper. Pickup campers or motor homes towing a trailer shall be treated as a single unit.
 - (n) *Camping contrary to posted notice.* No person shall camp on any lands under the management, supervision or control of the Commission contrary to posted notice.
 - (o) *Camping violations.* Violation of any State law or any rules of the Commission by a member of a camping party is cause for revocation of the camping permit.
 - (p) *Campground quiet hours.* No person shall make or cause to be made any unreasonable sounds or noises in or adjacent to any designated campground as provided in subsection 19.03(3) of this chapter between the hours of 10:00 p.m. and 6:00 a.m. Beaches and shelters are closed after park hours except in cases of emergency.

(O-7-01; O-8-03; O-16-13; O-05-21; O-38-22)

Sec. 19.11. Boating.

- (1) *Mission Lake boating regulations.*
 - (a) *Speed limit.* No person shall operate any watercraft in excess of five mph on Mission Lake, Town of Reid.
 - (b) *Mooring.* No person shall moor any watercraft for more than 24 hours on the water adjacent to or on the shore of Mission Lake Park.
- (2) *Motorboats, Sunny Vale Lake.* No person shall operate a motorboat of any kind in any manner on Sunny Vale Lake within Sunny Vale Park.
- (3) *State boating and water safety laws adopted.* The statutory provisions describing and defining regulations with respect to water traffic, boats, boating and related water activities and safety found in § 30.68, Wis. Stats., Restricted Areas, are hereby adopted and by reference made a part of this section.

Sec. 19.12. Jurisdiction over minors and underage persons.

Any and all County ordinances conferring jurisdiction on the Circuit Court for persons 12 years of age or older, including all subsequent amendments and/or revisions thereto, are hereby adopted and by reference made a part of this section.

(O-7-01)

Sec. 19.13. Legal action.

- (1) *Civil action.* Whenever an arrest shall have been made or any violation shall occur, the District Attorney shall prosecute as provided by law.
- (2) *Arrest powers.* Any law enforcement officer of the County or any of its municipal subdivisions may without a warrant arrest any offender whom he may detect in the violation of any of the provisions of this chapter and take the person so arrested immediately before a magistrate having competent jurisdiction and he shall have at all times the right to enter the premises of any building, structure or enclosure in any park or parkway, including such grounds, buildings, structures or enclosures which may be leased or set aside for private or exclusive use of any individual or group of individuals for the purpose of arresting violators and may use all necessary means to attain that end.
- (3) *Citation.*
 - (a) *Authority to issue.* Citations for violations of this chapter may be issued by any law enforcement officer or by the Director and those administrative, supervisory or managerial Wausau and Marathon County Parks, Recreation, and Forestry Department personnel delegated by the Director and listed below:

Assistant Parks and Recreation Directors;

Facility Managers;

Motorized Recreation Coordinator.
 - (b) *Format.* The citation issued for violations of this chapter shall be Parks, Recreation and Forestry Department Form P-451, "Uniform Citation" or equivalent, except for certain violations of §§ 19.12 and 19.23, where State Form GF-116, "Wisconsin Uniform Citation Underage Alcohol Offenses or Harassment" or current equivalent, shall be used.

(O-7-01; O-8-03; O-16-13; O-12-15; O-05-21; O-29-23)

Sec. 19.14. Schedule of cash deposits, County parks.

Section	Title	Deposit
19.01(4)	Closing Hours	\$30.00
19.01(5)	Fees, Charges and Deposits	20.00
19.01(6)(a)	Additional Rules	20.00
19.01(7)(b)	Private Construction	50.00
19.02(1)	Public Meetings	40.00
19.02(2)	Sales	40.00
19.02(3)	Soliciting Boat Rides	40.00
19.02(4)	Posting Bills or Advertising	40.00
19.03(1)	Personal Conduct	40.00
19.03(2)	Property of Others	50.00
19.03(3)	Unreasonable Noise	20.00
19.03(4)	Jumping and Diving	20.00
19.03(5)	Swimming and Wading	10.00
19.03(6)	Docks and Piers	10.00
19.03(7)	Obstructing	40.00
19.04(1)(a)	Deface, Remove or Destroy (Plus Restitution for Damages)	50.00
19.04(1)(b)	Prospecting Prohibited	50.00
19.04(1)(c)	Entry and Manipulation	30.00
19.04(2)(a)	Washing	20.00
19.04(2)(b)	Fish and Game Cleaning	20.00
19.04(2)(c)	Refuse	50.00
19.04(2)(d)	Dispensing Beverages	50.00
19.05(1)	Vehicular Traffic	40.00
19.05(3)	Abandoned Vehicles	40.00
19.06(1)	Fires	30.00
19.06(2)	Fireworks	30.00
19.06(3)	Firearms	50.00
19.06(4)	Shooting Range Park	50.00
19.06(5)	Throwing or Shooting Projectiles	30.00
19.07(1)	Animals in Public Facilities	10.00
19.07(2)	Animals Running at Large	10.00
19.07(3)	Howling Animals	10.00
19.07(4)	Animal Feces	10.00
19.07(5)	Horses	10.00
19.07(6)	Hunting and Trapping	50.00
19.08	Athletics	10.00
19.09(1)	Food and Beverage	10.00
19.09(2)	Boundary Buoys	50.00

19.09(3)	Beach Athletics	10.00
19.09(4)	Bathing Dress	10.00
19.09(5)	Changing Clothing	10.00
19.10(2)(a)	Camping Prohibited	20.00
19.10(2)(c)	Camping Limited, Camping Permit	20.00
19.10(2)(d)	Camping Limited, Designated Campgrounds	20.00
19.10(2)(e)	Campsite Occupancy	20.00
19.10(2)(f)	Campsite Changes	10.00
19.10(2)(g)	Camping Permit Expiration	10.00
19.10(2)(i)	Campsite Entry Hours	10.00
19.10(2)(j)	Campsite Parking	10.00
19.10(2)(l)	Camping Party Membership	10.00
19.10(2)(m)	Campsite Capacity	10.00
19.10(2)(n)	Camping Contrary to Posted Notice	20.00
19.10(2)(p)	Campground Quiet Hours	20.00
19.11(1)	Mission Lake Boating Regulations	30.00
19.11(2)	Motor Boats, Sunny Vale Lake	30.00
19.11(3)	State Boating and Water Safety Laws Adopted	50.00

(O-7-01; O-8-03; O-16-13; O-17-15; O-4-19)

WAUSAU CITY PARKS

Sec. 19.15. General administration and terms.

- (1) *Terms.*
 - (a) *Park and Recreation Committee.* The term "Park and Recreation Committee", composed of five members, is the committee of jurisdiction for City of Wausau parklands, hereafter referred to as the "Committee" in this subchapter.
 - (b) *City parks.* The terms "City park", "Wausau parks" and "park" mean all lands and water previously and subsequently acquired by the City of Wausau for park or recreational purposes or placed under the jurisdiction of the Committee and include, without limitation, parks, boulevards, triangles, swimming pools and privately owned lands, the use of which has been granted or leased to the City for park, recreational or like public purposes under this subchapter.
 - (c) *Director.* The Wausau and Marathon County Parks, Recreation, and Forestry Department, whose head shall be the Director, shall be the administrative or executive agency of the Committee. The Director shall be the authorized agent of the Committee as referred to in this subchapter.
- (2) *Scope.* The provisions of this subchapter shall apply to all lands, structures and property owned, leased or administered by the City of Wausau and under the management, supervision and control of the Committee.
- (3) *Closing hours.* No person shall enter or be in any City park between 11:00 p.m. and 6:00 a.m., except persons in attendance of an event involving rental of a shelter or participation in a sanctioned special event shall be allowed to remain within the park until midnight or as allowed by the event agreement. Persons traveling on

the River Edge Trail or on walkways traversing The 400 Block and persons transporting watercraft to and from designated boat landings are permitted at any hour. [WMC 9.20.020(b)]

- (4) *Permit to plant, remove, maintain and protect trees and shrubs.* No person shall plant trees or shrubs in any public area within the City of Wausau unless a written permit is first obtained from the City Forester. No person shall trim, prune, remove, treat, spray, inject, fertilize, brace, do surgery work, cut above or below ground or otherwise disturb any tree or shrub in any public area without obtaining a written permit from the City Forester. The permittee shall adhere to the arboricultural specifications and standards of workmanship set forth in the permit. A permit shall not be required to water trees and shrubs. [WMC 12.56.080]
- (5) *Fees and charges.* No person shall use any facility, shelter, land or other area, for which a fee or charge has been established by the Committee, without payment of such fee or charge prior to the use. [WMC 9.20.020(i)]
- (6) *Additional rules.* Rules and regulations may be made governing the use and enjoyment of all lands, structures and property owned, leased or administered by the City of Wausau and under the management, supervision and control of the Committee. No person shall disregard posted rules and regulations or engage in any activity contrary to posted notice. Any person who shall violate such rules and regulations or who refuses to subject himself or herself thereto may be excluded from the use of such facilities. The decision of the Director to exclude individuals from use of park facilities shall be final and the City of Wausau elects not to be bound by the provisions of Chapter 68, Wisconsin Statutes, with respect to administrative procedure in this regard. [WMC 9.20.020(o)]

(O-7-01; O-8-03; O-16-13; O-4-19)

Sec. 19.16. Public meetings and sales.

- (1) *Public meetings.* No person shall give or take part in any entertainment or exhibition or hold any public meeting or engage in public speaking in any City park without written consent of the City of Wausau. [WMC 9.20.020(d)]
- (2) *Sales.* No person shall sell or offer for sale any goods, wares or merchandise in any City park, except as authorized by the City of Wausau and when holding proper licenses. [WMC 9.20.020(e)]
- (3) *Posting bills or advertising.* No person shall distribute or post bills or advertisements in any City park without written consent of the City of Wausau. [WMC 9.20.020(c)]

(O-8-03; O-16-13)

Sec. 19.17. Personal conduct and nuisances.

- (1) *Personal conduct.* No person shall engage in violent, abusive, indecent, profane, boisterous, unreasonably loud or otherwise disorderly conduct under circumstances in which the conduct tends to cause or provoke a disturbance in any City park. [WMC 9.04.010 adopting § 947.01, Wis. Stats.]
- (2) *Unreasonable noise.* No person shall make or cause to be made any unreasonably loud sounds or noises under circumstances which tend to annoy or disturb others. No person shall operate a loudspeaker within any Wausau park, except upon written permit issued by the Committee or its authorized agent upon such terms and conditions as will ensure that the public peace and order will not be unreasonably disturbed. [WMC 9.04.030]
- (3) *Jumping and diving.* No person shall jump, dive, or otherwise launch themselves from any bridge or approach thereto into any body of water within any Wausau park. [WMC 9.22.020]

-
- (4) *Swimming and wading.* No person shall swim or wade within 50 feet of boat launch ramps at any Wausau park except for the express purpose of launching or landing watercraft. [WMC 9.22.010]
 - (5) *Docks and piers.* No person shall use docks or piers adjacent to any boat landing in any manner as to obstruct or hinder the launching, landing, loading or unloading of watercraft. [WMC 9.20.020(k)]
 - (6) *Obstructing.* No person shall knowingly obstruct a ranger or any law enforcement officer while the ranger or law enforcement officer is doing any act in an official capacity and with lawful authority. Obstruct includes without limitation knowingly giving false information with intent to mislead the ranger or law enforcement officer in the performance of duty including the issuance of any citation. [WMC 9.20.020(m)]

(O-7-01; O-8-03; O-16-13)

Sec. 19.18. Destruction, entry, cleaning and refuse.

- (1) *Damage to trees and shrubs.* No person shall in any public area of the City: break, injure, mutilate, kill or destroy any tree or shrub; permit any animal under his control to do so; permit any fire to injure any portion of any tree or shrub; permit any leak to exist in any gas line within the root zone of any tree or shrub; permit any toxic chemical to seep, drain or be emptied on or about any tree or shrub; or permit electric wires to come in contact with any tree or shrub. During building operations, the builder shall erect suitable protective barriers around public trees and shrubs which may be injured after first giving written notice to the City Forester. [WMC 12.56.040]
- (2) *Fastening materials to trees and shrubs.* No person shall fasten any sign, rope, wire or other materials to or around or through any public trees or shrubs in the City of Wausau without obtaining a written permit from the City Forester, except in emergencies. [WMC 12.56.050]
- (3) *Littering.*
 - (a) No person shall throw any glass, rubbish, waste or filth upon the streets, parks or upon the surface of any body of water within the City. [WMC 9.04.040]
 - (b) No person shall upset or turn over the contents of any recyclable or nonrecyclable solid waste container in any City park. [WMC 6.44.070(b)]
 - (c) No person shall deposit or leave any residential or commercial waste material in any waste receptacle or other area in any City park. [WMC 6.44.070(a)]
- (4) *Hot ashes and combustible materials.* No person shall deposit hot ashes, cinders, smouldering coals or greasy or oily substances liable to spontaneous ignition into any combustible receptacle or place the same within ten feet of any combustible material within any City park. [WMC 17.28.010]
- (5) *Dispensing beverages.* No vendor shall dispense beverages in any cup, glass, flask, bottle or other container made of glass or other shatterable material designed or used for holding a beverage at any outdoor fair, game, attraction, event, or public function. This prohibition does not apply to vendors at any of the above-listed activities serving sit-down meals where the beverage containers are washed and reused. All beverage vendors at any of the above-listed activities shall use recyclable beverage containers and provide adequate collection facilities for the recycling of all beverage containers so used. [WMC 6.28.010]
- (6) *Metal and glass beverage containers and carry-ins.* No person shall carry into, possess, or throw any cup, glass, flask, bottle or other container made of glass or other shatterable material designed or used for holding a beverage in or on the amphitheater at Marathon Park, and the grandstand and bleachers at Athletic Park. All beverage vendors must dispense beverages at the above-listed locations in either paper or plastic cups which may be enclosed with snap-on plastic lids only. [WMC 9.20.020(g)]

-
- (7) *Entry.* No person shall enter in any way any building, facility or area that may be under construction or locked or closed to public use or enter or be upon any building, facility or area after the posted closing time or before the posted opening time or contrary to posted notice in any City park. [WMC 9.20.020(j)]
 - (8) *Deface, remove or destroy.* No person shall disturb, molest, deface, remove or destroy any trees, shrubs, plants or other natural growth; disturb or remove shoreline rip-rap; carve on any rocks, archaeological or geological features, signs, walls or structures; drive nails in trees or move, deface or vandalize in any manner any structures including buildings, signs, fences, tables or other park property. Edible fruits, nuts, wild mushrooms and wild asparagus may be picked or gathered without a permit. [WMC 9.20.020(q)]

(O-7-01; O-8-03; O-16-13)

Sec. 19.19. Vehicles.

(1) *Vehicular traffic.*

- (a) No person shall operate any vehicle at a speed in excess of 15 mph or contrary to official traffic signs in any City park. [WMC 9.20.010(a)]
- (b) No person shall, within any City park, by or through the use of a motor vehicle, motorcycle, snowmobile or minibike, under circumstances which tend to cause or provoke a disturbance or annoy one or more persons, engage in violent, abusive, unreasonably loud or otherwise disorderly conduct, including but not limited to unnecessary or deliberate or intentional: spinning of wheels; squealing of tires; revving of the engine; blowing the horn; causing the engine to backfire; or causing the vehicle, while commencing to move or in motion, to raise one or more of its wheels off the ground. [WMC 10.01.011]
- (c) No person shall operate or park any motor vehicle except as provided in this subchapter, upon any hiking trail, beach area, playground, picnic area or any other area other than established roads, parking areas, boat ramps and service areas or contrary to posted notice or within any City park seasonally closed to vehicular traffic. [9.20.010(b)]
- (d) No person shall operate a snowmobile as defined in §340.01(58a), Wis. Stats., in any City park, except on snowmobile trails approved by or for events authorized by the Committee. [WMC 9.20.010(c)]

(2) *Parking.*

- (a) No person shall park, stop or leave standing, whether attended or unattended, any vehicle, obstruction or watercraft:
 - 1. In any manner as to block, obstruct or limit the use of any road, trail, sidewalk, parking lot, boat landing, waterway or winter sport facility. [WMC 9.20.010(d)(1)]
 - 2. Outside of any area provided for such purposes when it is practical to use such areas. [WMC 9.20.010(d)(2)]
 - 3. Contrary to posted notice. [WMC 9.20.010(d)(3)]
- (b) No person shall park, stop or leave standing any vehicle, whether attended or unattended, whether temporarily or otherwise, in areas reserved, by official traffic signs indicating the restriction, for vehicles displaying registration plates or identification cards which designates the vehicle as a vehicle used by a physically disabled person as defined in § 346.505, Wis. Stats. [WMC 10.01.080(c)]
- (c) No person shall park, stop or leave standing any vehicle, whether attended or unattended, whether temporary or otherwise, in areas designated as fire lanes with signs or marked curbs. [WMC 10.01.080(c)]

-
- (d) The forfeiture for a violation of paragraph (a) shall be \$10.00. The forfeiture for a violation of paragraph (b) or (c) shall be \$30.00. In the event that the violator fails to appear in court on the date and time indicated on the citation, or fails to enter a "not guilty" plea by mail by the court date, or fails to stipulate to the violation by posting the forfeiture required in the office of the Wausau and Marathon County Parks, Recreation, and Forestry Department at the address indicated on the citation by the court date, said forfeiture shall be ordered by the court in default and shall be increased by the amount of \$30.00 as a penalty for failure to pay in a timely fashion, for a total forfeiture of \$40.00 for a violation of paragraph (a) and \$60.00 for violation of paragraph (b) or (c).
- (e) The provisions of § 345.28, Wis. Stats., and any subsequent amendments thereto, are specifically adopted and incorporated herein by reference. If the alleged violator fails to pay the amount of the forfeiture as provided herein, or to appear in court, the County may take any or all of the actions authorized under § 345.28, Wis. Stats. [WMC 10.01.080(h)]
- (3) *Abandoned vehicles.* No person shall leave any vehicle unattended without approval of the Committee or its authorized agent for more than 48 hours under such circumstance as to cause the vehicle to reasonably appear to have been abandoned. An abandoned vehicle shall constitute a public nuisance and be subject to removal at the owners expense. [WMC 10.08.040] Removal of the vehicle shall not relieve the owner or the operator of the vehicle from any penalty incurred because of such violation. [WMC 10.20.045]
- (O-7-01; O-8-03; O-16-13)

Sec. 19.20. Fires, fireworks, firearms, missiles.

- (1) *Fires.* No fires shall be permitted in any park other than The 400 Block, except for cooking purposes at designated places. No person shall grill on The 400 Block, with the exception of those special events for which waivers are granted upon the recommendation of the public health and safety committee and approval of the Wausau Common Council. Open fires utilizing liquid gas or gas fuels may be permitted on The 400 Block with the written consent of the City of Wausau. [WMC 9.20.020(a)]
- (2) *Fireworks.* Section 167.10, Wis. Stats., regulating the sale and use of fireworks, exclusive of penalties, is adopted by reference as part of this subchapter. [WMC 9.12.010]
- (3) *Firearms.*
- (a) No person, except a law enforcement officer, shall discharge any firearm, rifle, bow, arrow, spear, spring or air gun of any description in any Wausau park provided that this section shall not prevent the maintenance and use of supervised rifle or pistol ranges or shooting galleries authorized by the Wausau Common Council. This subsection shall be deemed to prohibit hunting in Wausau parks. [WMC 9.08.010(a)]
- (b) Unless other facts and circumstances that indicate a criminal or malicious intent on the part of the person apply, a person is not in violation of, and may not be charged with a violation of, this section for loading, carrying, or going armed with a firearm, without regard to whether the firearm is loaded or is concealed or openly carried. [WMC 9.08.010(c)]
- (c) This section does not apply and may not be enforced if the actor's conduct is justified or, had it been subject to a criminal penalty, would have been subject to a defense described in §939.45, Wis. Stats. [WMC 9.08.010(d)]
- (d) No person, except a law enforcement officer, shall enter any building, facility, or location open to the public that is restricted by state law or posted as a no firearms or concealed weapons location while possessing, carrying, or concealing a firearm or weapon, whether with or without a state permit. [WMC 9.08.030(c)]

-
- (4) *Throwing or shooting projectiles.* No person shall throw or shoot any object, arrow, stone, snowball or other missile or projectile, by hand or any other means, at any other person or at, in or into any building, street, sidewalk, park, playground or other public place within the City. This subsection shall not apply to archery ranges under the supervision of the Committee. [WMC 9.08.020]

(O-7-01; O-8-03; O-16-13)

Sec. 19.21. Animals.

- (1) *Animals in public facilities.* No person having immediate custody, care or control of any animal, shall permit said animal to enter and/or remain in or about any designated public park building, bathing beach, or playground safety surface area in any City park, except for a dog specially trained to lead blind or deaf persons or to provide support for mobility-impaired persons. [WMC 9.20.020(h)]
- (2) *Animals running at large.*
- (a) *Restricted.* No person shall own, keep, possess or harbor a dog or cat or other animal and allow such animal to run at large in any City park. [WMC 8.08.190(a)] The animal shall be considered as running at large when it is not on the premises of its owner, unless it is on a leash no more than six feet in length, is in or upon a vehicle, or is in or on the property of another who does not object to the presence of such animal, is in a park, other than The 400 Block, on a leash no more than 16 feet in length or is part of a 4-H project, is on a display for judging purposes, is in an itinerant or transient carnival, circus or other like show, is in a dog or cat show or trial, or is part of the program of a public or private educational institution, or in an officially designated off-leash area in the following parks:
1. Oak Island Park - 6:00 a.m. - 9:00 a.m. and 6:00 p.m. - 9:00 p.m.
 2. Picnic Island Park - 6:00 a.m. - 9:00 a.m. and 6:00 p.m. - 9:00 p.m.
 3. Memorial Park - 6:00 a.m. - 9:00 a.m. [WMC 8.08.190(b)]
- (b) The 400 Block. No animals shall be allowed in The 400 Block park during organized special events as approved by the city unless one of the following conditions are met:
1. The animal is performing in or on display for an event or show approved as part of a special event;
 2. A person with a disability is being accompanied by an assistance dog trained for that person;
 3. An emergency services worker is being accompanied by a dog trained to assist police, fire or paramedics.
- (c) *Definitions.* The following terms shall have the meanings indicated:
- Assistance dog.* Any dog that has been or is being trained as a guide dog, hearing dog, or service dog. Such terms are further defined as follows:
- Guide dog.* Any dog that has been or is being specially trained to aid a particular blind or visually impaired person.
- Hearing dog.* Any dog that has been or is being specially trained to aid a particular deaf or hard of hearing person.
- Service dog.* Any dog that has been or is being specially trained to aid a person with a disability other than sight or hearing. [WMC 8.08.190(c)]
- (d) No person shall allow a dog or any other animal on cross-country ski trails during that period of the year when such trails are open for cross-country skiing in any City of Wausau park. [WMC 9.20.020(r)]

-
- (3) *Howling animals.* No person shall own, keep, possess or harbor any animal in any City park which by frequent or habitual howling, yelping, barking or wailing disturbs other persons. [WMC 8.08.230]
 - (4) *Animal feces.*
 - (a) The owner or person having immediate care, custody or control of a dog or other animal shall promptly remove and dispose of, in a sanitary manner, any feces left or deposited by the animal upon any City park. [WMC 8.08.220(a)]
 - (b) No person shall permit a dog or other animal to be in any City park unless such person has, in his immediate possession, an appropriate means of removing animal feces. [WMC 8.08.220(b)]
 - (5) *Removing animals.* No person shall allow a dog or other animal to intimidate any other person from the use or enjoyment of any City park. Evidence that a dog or other animal intimidates persons includes, but is not limited to, such animal not being amenable to control or threatening to attack persons or other animals. Any law enforcement officer or ranger may order the animal be removed from the park. [WMC 9.20.020(p)]
 - (6) *Hunting and trapping.* No person shall take, catch, kill, hunt, trap, pursue, feed or otherwise disturb any wild animals or birds in any City park, except that nuisance animals may be trapped upon written consent of the Committee or its authorized agent and in accordance with applicable state statutes and applicable provisions of the Wisconsin Administrative Code setting forth regulations of the Department of Natural Resources. [WMC 9.20.020(n)]

(O-7-01; O-8-03; O-16-13; O-19-14)

Sec. 19.22. Athletics.

- (1) *Golf.* No person shall play or practice golf in any City park. [WMC 9.20.020(f)]
- (2) *Roller skates, skateboards, and scooters.* No person shall ride, push or travel upon roller skates, skateboards, or scooters within any building or facility not specifically intended for such use including, but not limited to, tennis courts, benches, tables, bleachers or on docks and piers adjacent to any boat landing, except in designated areas and in accordance with posted regulations. [WMC 12.44.035(a)(5)]
- (3) *Ice skating.* No person shall play or practice hockey, broomball or any other games or sports that may interfere with casual ice skaters, when casual skaters are present on outdoor ice skating rinks established by the Committee, except hockey and broomball may be played on designated hockey rinks. [WMC 9.20.020(l)]

(O-7-01; O-8-03; O-16-13)

Sec. 19.23. Jurisdiction over minors and underage persons.

Any and all County ordinances conferring jurisdiction on the Circuit Court for persons 12 years of age or older, including all subsequent amendments and/or revisions thereto, are hereby adopted and by reference made a part of this section.

(O-7-01)

Sec. 19.24. Schedule of cash deposits, Wausau parks.

Section	Title	Deposit
19.15(3)	Closing Hours	\$30.00
19.15(5)	Fees and Charges	20.00

19.15(6)	Additional Rules	20.00
19.16(1)	Public Meetings	40.00
19.16(2)	Sales	40.00
19.16(3)	Posting Bills or Advertising	40.00
19.17(1)	Personal Conduct	40.00
19.17(2)	Unreasonable Noise	20.00
19.17(3)	Jumping and Diving	20.00
19.17(4)	Swimming and Wading	10.00
19.17(5)	Docks and Piers	10.00
19.17(6)	Obstructing	40.00
19.18(1)	Damage to Trees and Shrubs (Plus Restitution for Damages)	50.00
19.18(2)	Fastening Materials to Trees and Shrubs	10.00
19.18(3)	Littering	50.00
19.18(4)	Hot Ashes and Combustible Materials	50.00
19.18(5)	Dispensing Beverages	50.00
19.18(6)	Metal and Glass Beverage Containers and Carry-ins	10.00
19.18(7)	Entry	30.00
19.18(8)	Deface, Remove or Destroy (Plus Restitution for Damages)	50.00
19.19(1)	Vehicular Traffic	40.00
19.19(3)	Abandoned Vehicles	40.00
19.20(1)	Fires	30.00
19.20(2)	Fireworks	30.00
19.20(3)	Firearms	50.00
19.20(4)	Throwing or Shooting Projectiles	30.00
19.21(1)	Animals in Public Facilities	10.00
19.21(2)	Animals Running at Large	10.00
19.21(2)(d)	Animals on Ski Trails	10.00
19.21(3)	Howling Animals	10.00
19.21(4)	Animal Feces	10.00
19.21(5)	Removing Animals	30.00
19.21(6)	Hunting and Trapping	50.00
19.22	Athletics	10.00

(O-7-01; O-8-03; O-16-13; O-17-15; O-4-19)

Secs. 19.25—19.29. Reserved.

LAKE WAUSAU

Sec. 19.30. Lake Wausau management committee.

- (1) *Agreement.* Pursuant to § 66.30, Wis. Stats., the Cities of Wausau and Schofield, Village of Rothschild, Towns of Stettin and Rib Mountain and the County enter into an agreement to create the Lake Wausau Management Committee.
- (2) *Membership.*
 - (a) The Committee shall consist of two representatives from each of the participating municipalities and each representative's nomination to the Committee shall be confirmed by its governing body. The term of the representatives shall be for two years. One representative from each participating municipality shall be appointed in an odd year, the other shall be appointed in an even year.
 - (b) Each representative shall have one vote.
- (3) *Purpose.* The Committee shall be organized to:
 - (a) Oversee activities and developments affecting the public health, safety and welfare concerning Lake Wausau and its contiguous waters within the boundaries of the participating municipalities including, but not limited to:
 1. Ways of protecting and enhancing the natural beauty of the lake.
 2. Land uses.
 3. Lake uses.
 4. Conflicting lake uses.
 5. Shoreline management issues.
 6. Water user safety issues.
 7. Long-term water quality goals and issues.
 - (b) Propose uniform ordinances for adoption by the participating municipalities for the protection of the public health, safety and welfare and which will protect or enhance the opportunities for public enjoyment of the lake.
 - (c) Study and make recommendations concerning the provision of uniform law enforcement services on Lake Wausau and its contiguous waters within the boundaries of the participating municipalities.
- (4) *Officers.* The Committee shall elect from its membership a chairman, vice-chairman and secretary. The officers shall be elected at the annual meeting which will occur in May of each year. The terms of the officers shall be for one year.
- (5) *Duties.*
 - (a) *Chairman.* The chairman shall call and preside over all regular and special meetings of the Committee.
 - (b) *Vice-chairman.* The vice-chairman in the absence of the chair shall perform any and all duties of the chair.
 - (c) *Secretary.* The secretary shall take minutes and maintain a record of all committee business. The secretary shall also provide for timely publication and distribution of all notices of Committee business.
- (6) *Rules.*
 - (a) "Robert's Rules" shall govern all Committee activities, unless otherwise provided herein.

-
- (b) A quorum shall be constituted by a majority of the representatives and of the municipality's presence at a Committee activity. A municipality shall be counted as present when one representative from that municipality is present.
 - (c) All appropriate State statutes concerning open meetings and records shall apply to the Committee.
- (7) *Powers.*
- (a) The Committee shall have the power to enter into contracts and agreements upon designation of an appropriate officer to enter into the contracts or agreements. Prior to the execution of contracts, funding shall be obtained from the participating municipalities or from other sources.
 - (b) The officers may at their discretion appoint such committees as shall be necessary from time to time.
- (R-36-92)