




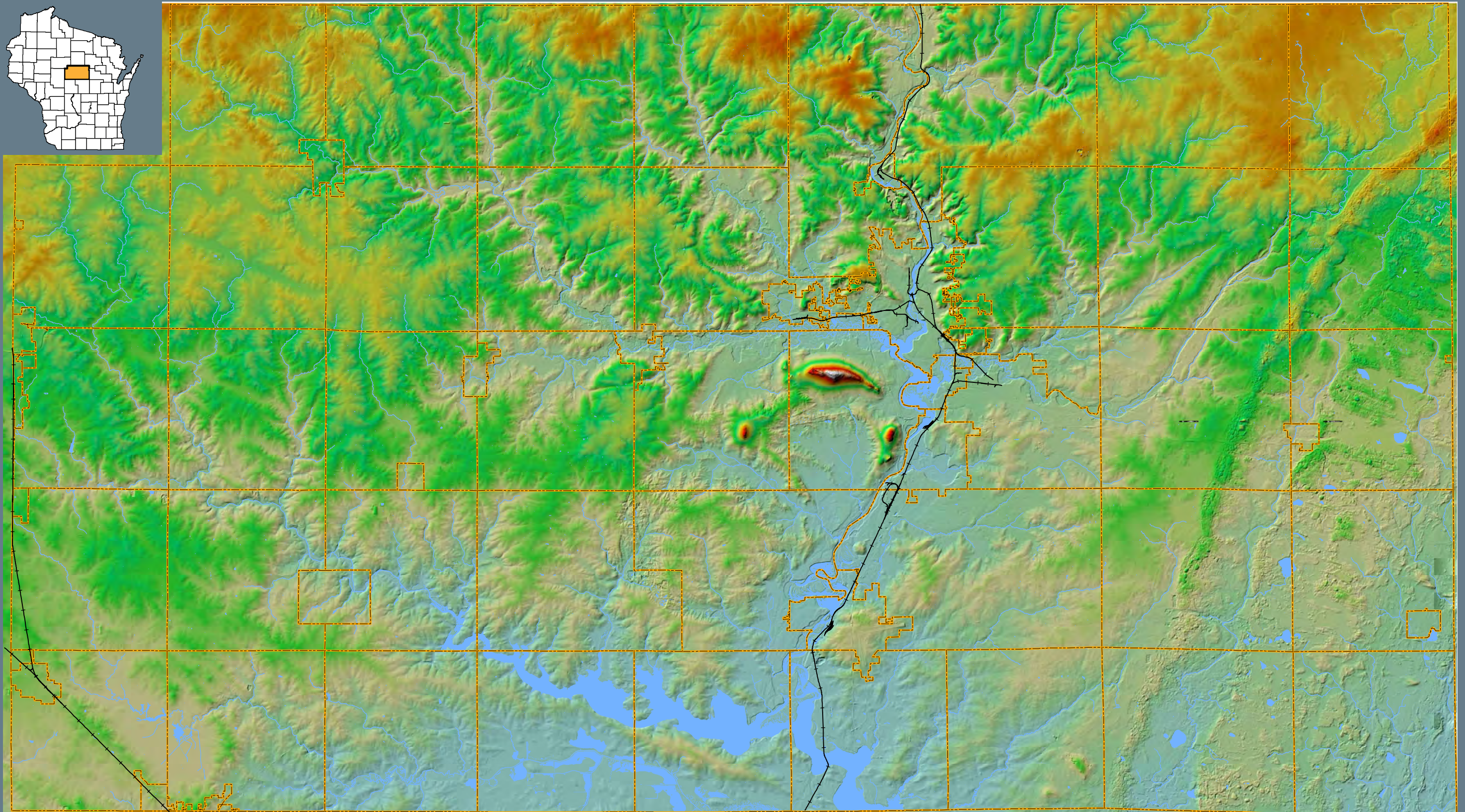
Legend

-  Railroad
-  Minor Civil Divisions
-  Water

Elevation information from 2012 LiDAR Data
Elevation ranges from 1058' to 1941'

Terrain

Marathon County, Wisconsin



Comprehensive Plan

This map is neither a legally recorded map nor a survey of the actual boundary of any property depicted. This drawing is a compilation of records, information and data used for reference purposes only. NCWRPC is not responsible for any inaccuracies herein contained.

Prepared By:
North Central Wisconsin Regional Planning Commission
210 McClellan St. Wausau, WI 54403 - www.ncwrpc.org
Date Printed: Tuesday, February 16, 2016