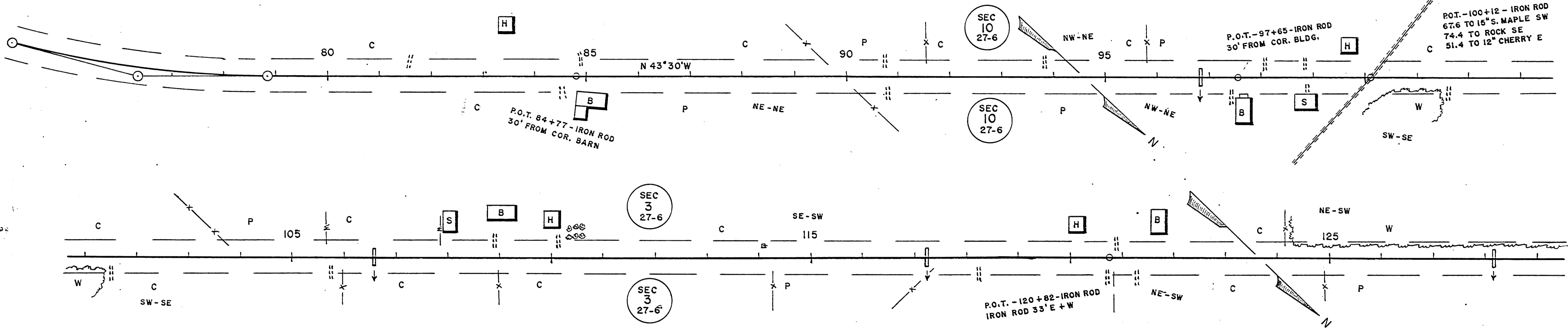
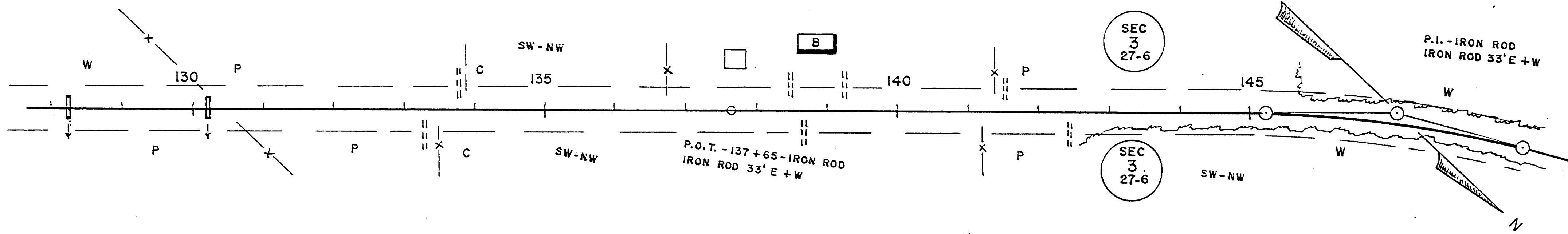
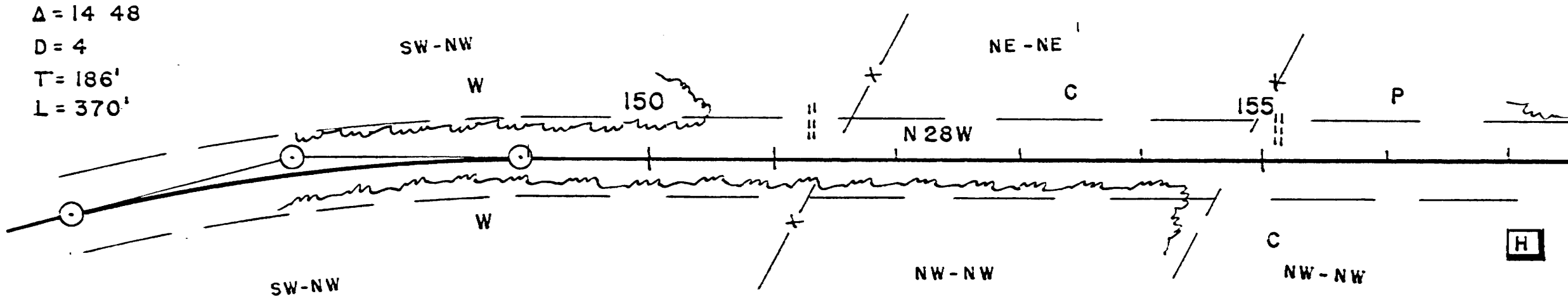


$PI = 76 + 32.5$
 $\Delta = 14^\circ 56'$
 $D = 3'$
 $T = 250'$
 $L = 498'$





PI=147+07.2
 $\Delta=14.48'$
 D=4
 T=186'
 L=370'



PI=164+72.9
 $\Delta=20^{\circ}13'$
 D=5'
 T=204'
 L=404.4'

P.I. - IRON ROD
23.2 TO P.P. SE
47.8 TO P.O.T. TOWN LINE
31.5 TO P.P. W

