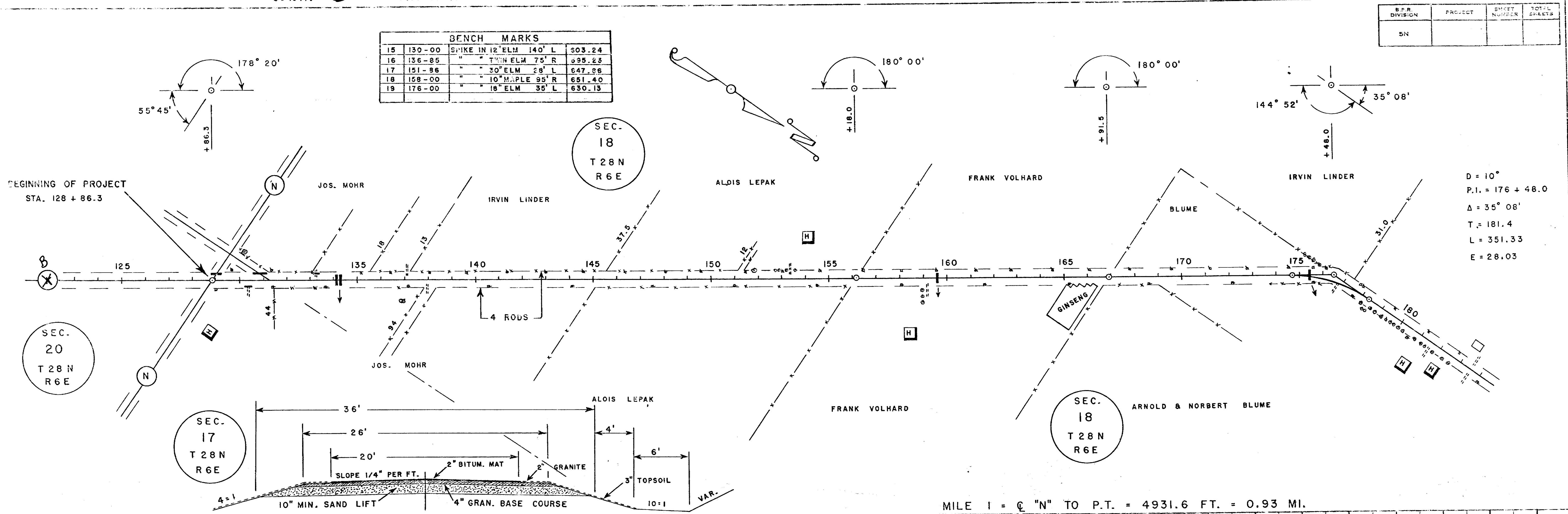


C.T.H. "B" - MARATHON

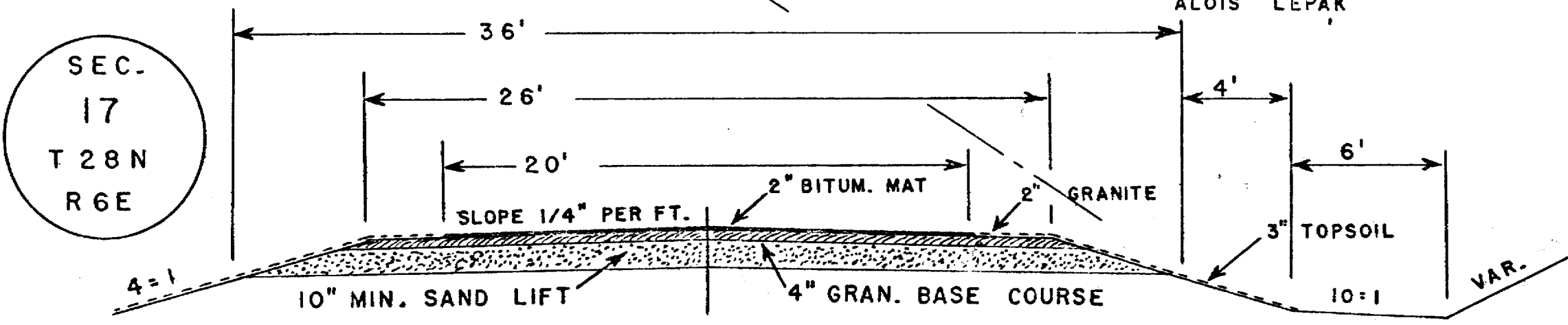
B.P.R. DIVISION	PROJECT	SHEET NUMBER	TOTAL SHEETS
5N			

BENCH MARKS			
15	130-00	SPIKE IN 12" ELM 140' L	503.24
16	136-85	" " " " 75' R	595.25
17	151-86	" " " " 28' L	647.96
18	168-00	" " " " 10" MAPLE 95' R	651.40
19	176-00	" " " " 18" ELM 35' L	630.13

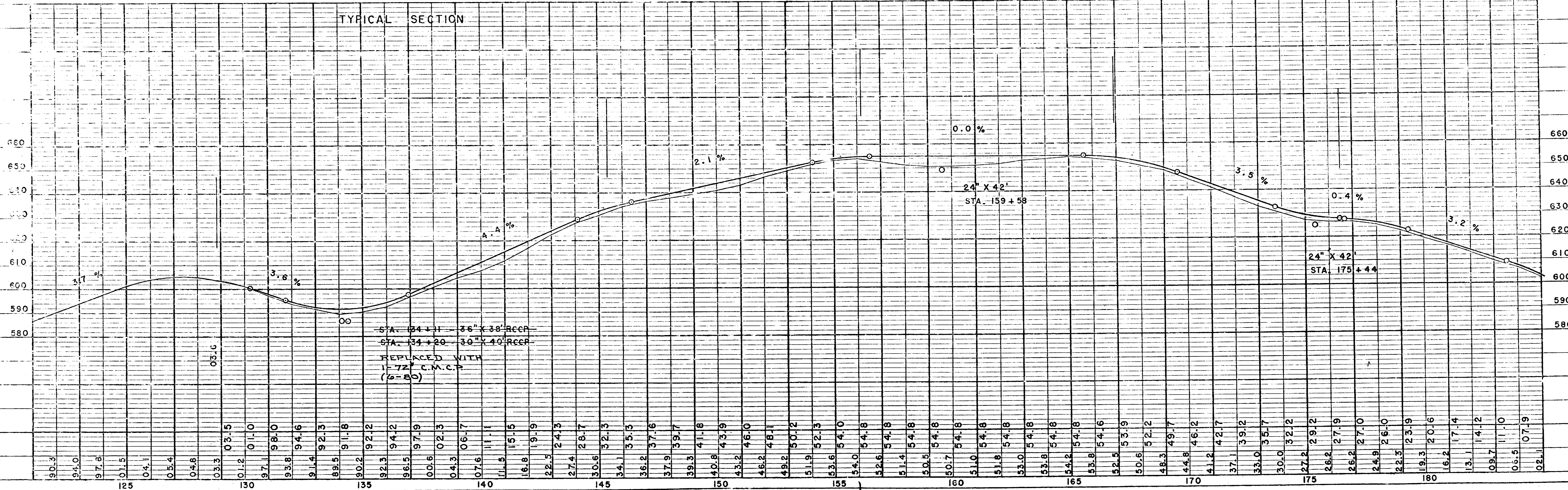
DATE: 3-52
 C.E.C.
 NOTE BOOK
 RT. OF WAY CHECKED



D = 10°
 P.I. = 176 + 48.0
 Δ = 35° 08'
 T = 181.4
 L = 351.33
 E = 28.03



MILE 1 = C "N" TO P.T. = 4931.6 FT. = 0.93 MI.

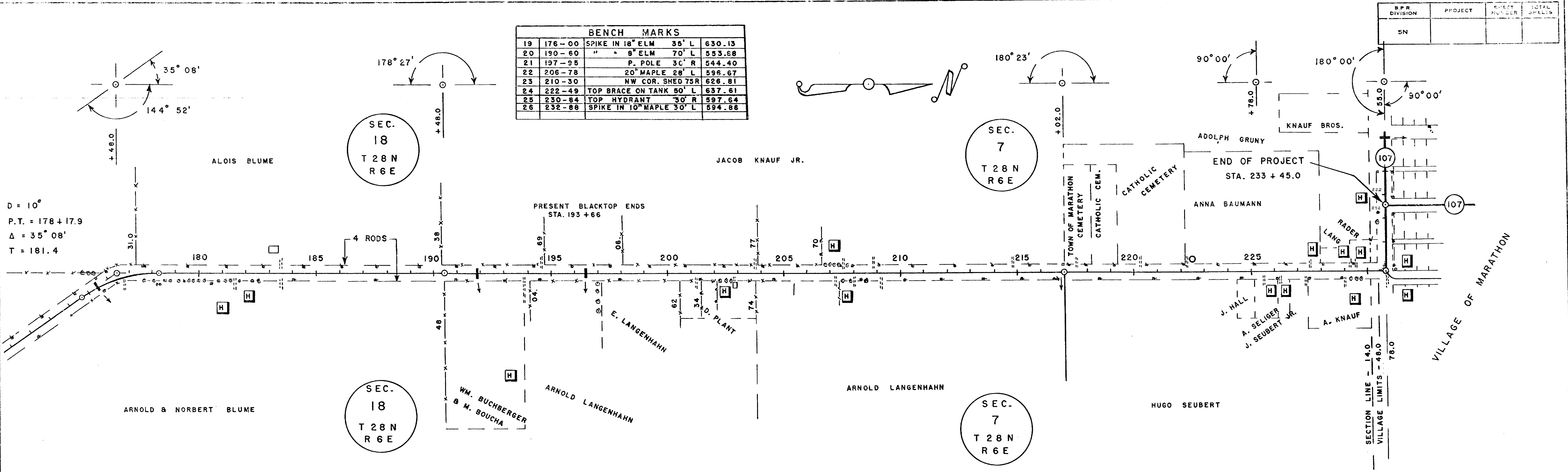


STA. 134 + 11 - 36" X 28" R.C.C.P.
 STA. 134 + 20 - 30" X 40" R.C.C.P.
 REPLACED WITH
 1-72" C.M.C.P.
 (6-80)

BENCH MARKS			
19	176-00	SPIKE IN 18" ELM 35' L	630.13
20	190-60	" " 8" ELM 70' L	553.68
21	197-95	P. POLE 30' R	544.40
22	206-78	20" MAPLE 28' L	596.67
23	210-30	NW COR. SHED 75R	626.81
24	222-49	TOP BRACE ON TANK 50' L	637.61
25	230-84	TOP HYDRANT 30' R	597.64
26	232-88	SPIKE IN 10" MAPLE 30' L	594.66

DATE: 3-52
 BY: C.E.C.
 SURVEYED: []
 PLOTTED: []
 CHECKED: []
 NOTE BOOK NO. []
 PLAN NO. []

D = 10°
 P.T. = 178 + 17.9
 Δ = 35° 08'
 T = 181.4



MILE 2 = P.T. TO EDGE CONC. "107" = 5527.1 FT. = 1.05 MI.

DATE: 3-52
 BY: C.E.C.
 SURVEYED: []
 PLOTTED: []
 CHECKED: []
 NOTE BOOK NO. []
 PROFILE NO. []

