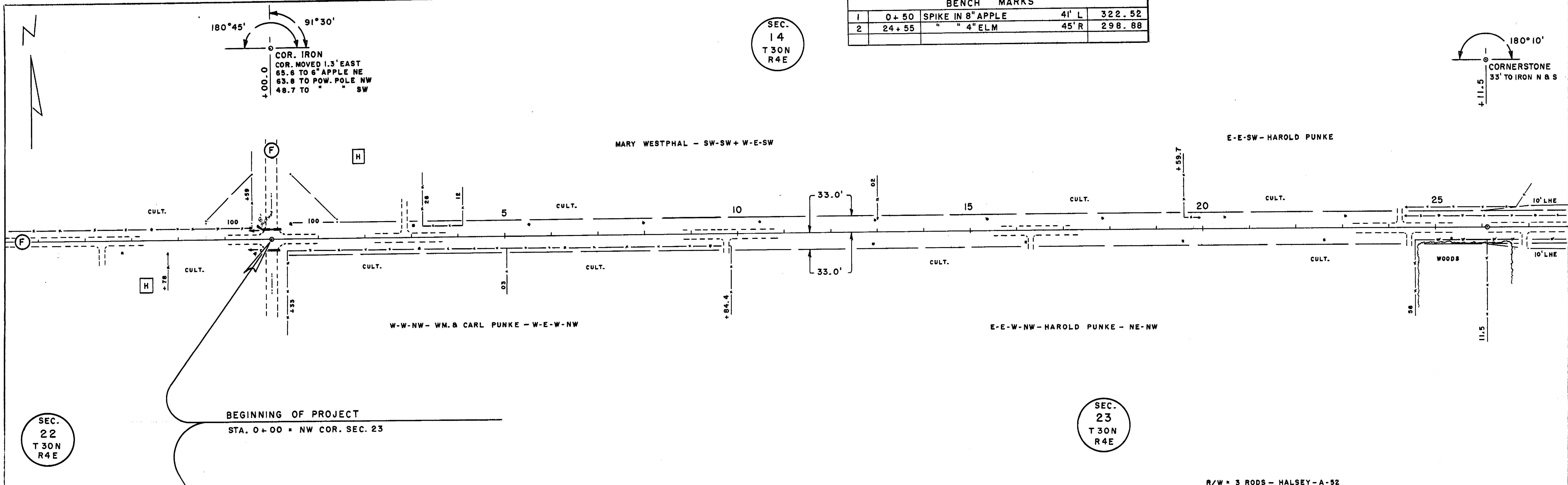
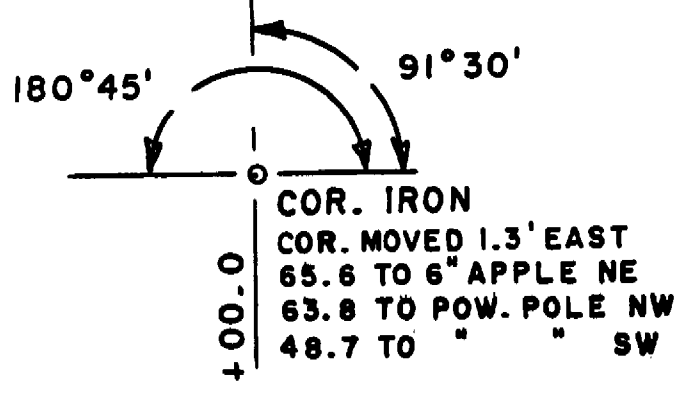
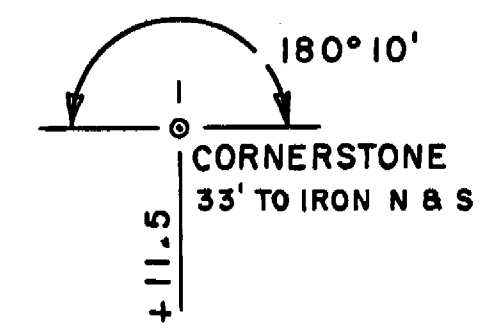




BENCH MARKS			
1	0+50	SPIKE IN 8" APPLE	4' L 322.52
2	24+55	" " 4" ELM	45' R 298.88

SEC. 14  
T 30N  
R 4E

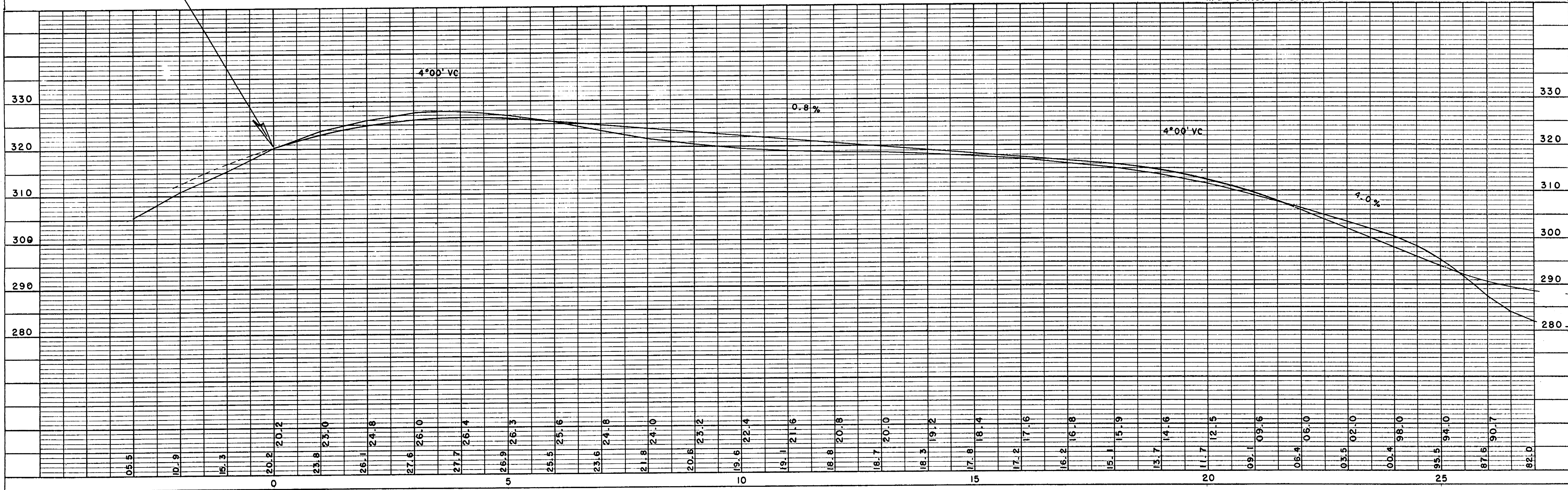


SEC. 22  
T 30N  
R 4E

BEGINNING OF PROJECT  
STA. 0+00 = NW COR. SEC. 23

SEC. 23  
T 30N  
R 4E

R/W = 3 RODS - HALSEY - A-52



NOTE BOOK  
NO. \_\_\_\_\_  
FLUIDAL ALIGNMENT CHECKED  
BY: \_\_\_\_\_

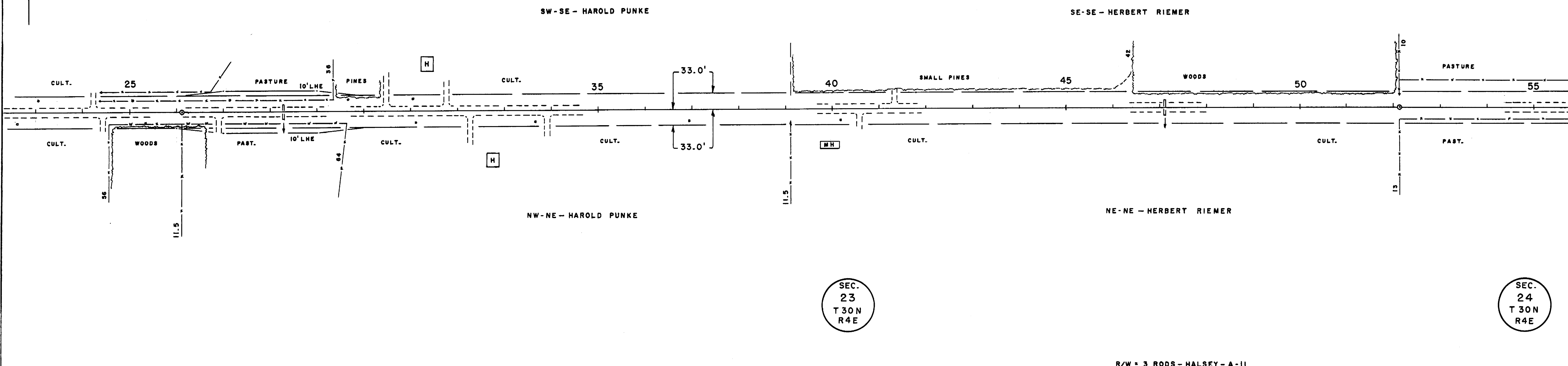
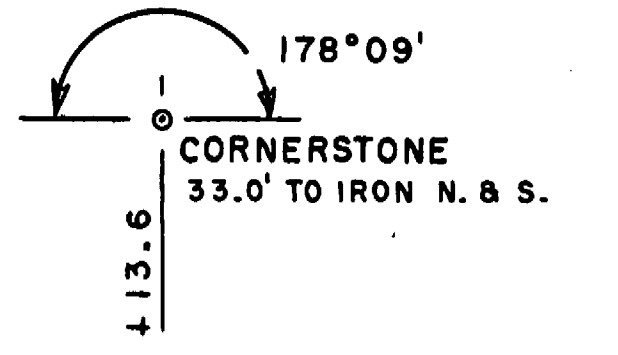
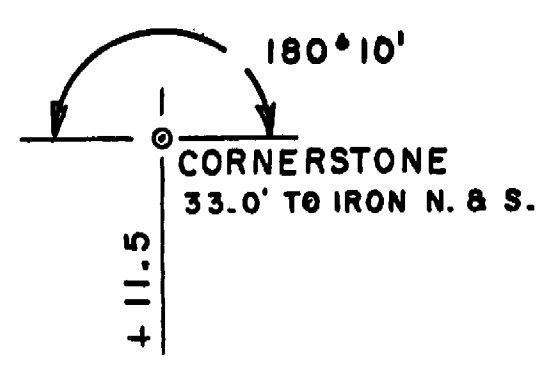
NOTE BOOK  
NO. \_\_\_\_\_  
FLUIDAL GRADES CHECKED  
BY: \_\_\_\_\_  
STRUCTURE NOTATION CHECKED  
BY: \_\_\_\_\_

BENCH MARKS				
2	24 + 55	SPIKE IN 4" ELM	45' R	298.88
3	48 + 31	" " 12" OAK	35' L	308.71

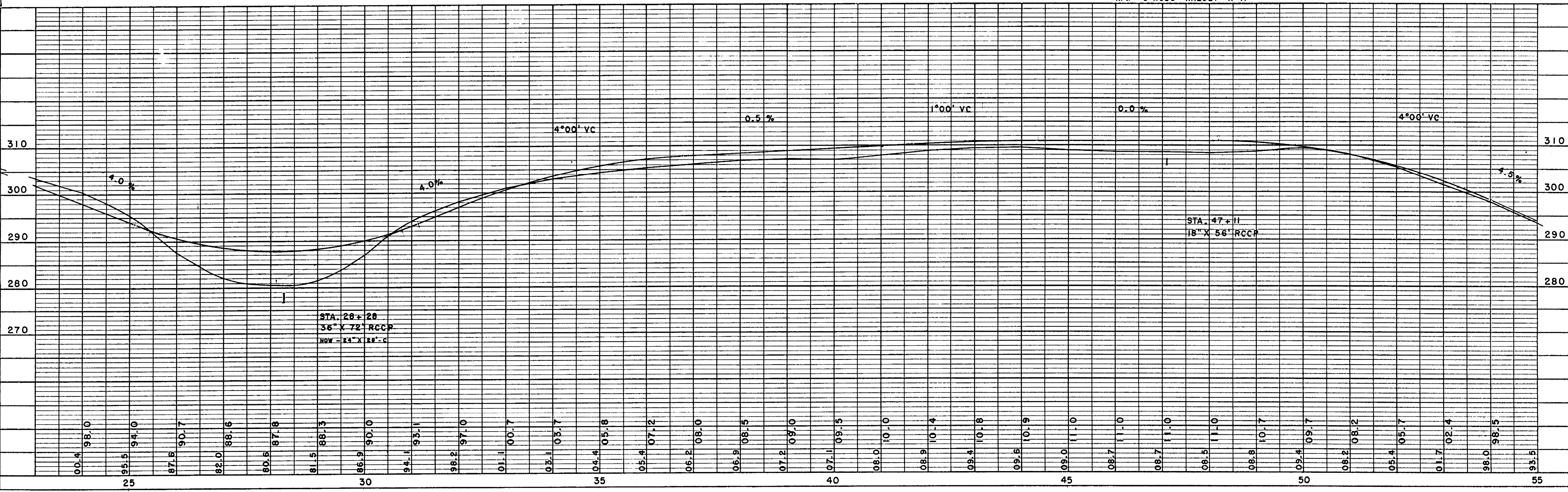
SEC. 14  
T 30 N  
R 4 E

SEC. 24  
T 30 N  
R 4 E

SEC. 23  
T 30 N  
R 4 E



R/W = 3 RODS - HALSEY - A-11



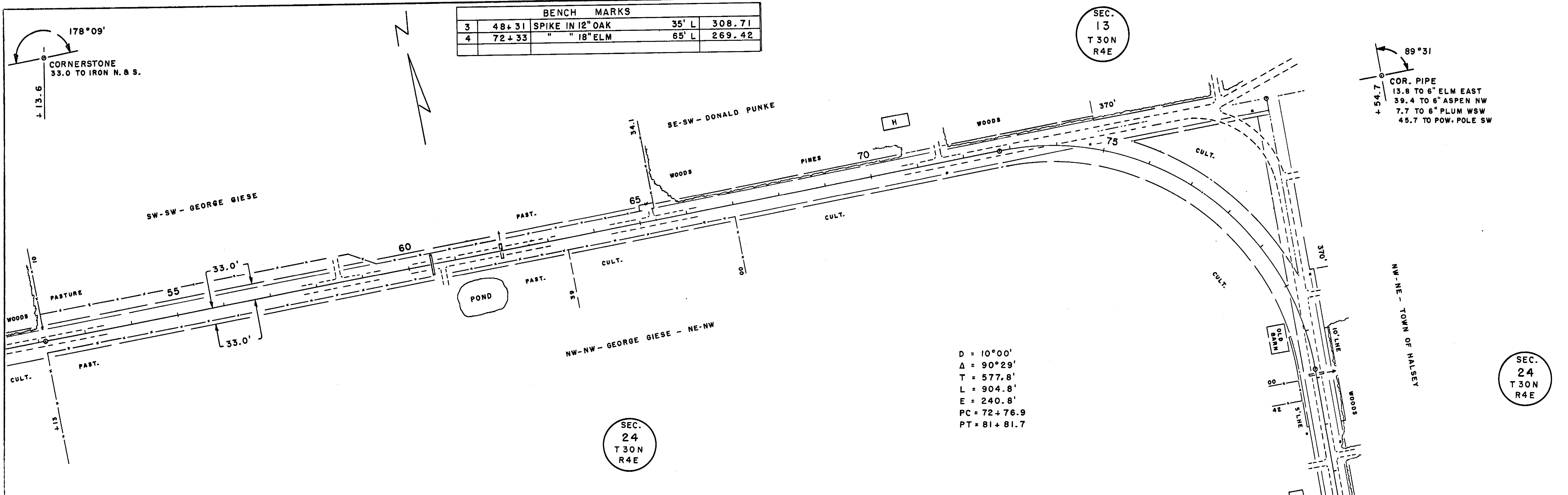
NOTE BOOK  
NO. \_\_\_\_\_  
PLANNED, CHECKED,  
BY OF WAY CHECKED

NOTE BOOK  
NO. \_\_\_\_\_  
GRADES CHECKED,  
B.M.'S NOTED,  
STRUCTURE NOTATIONS OK'D.

BENCH MARKS				
3	48+31	SPIKE IN 12" OAK	35' L	308.71
4	72+33	" " 18" ELM	65' L	269.42

SEC. 13  
T 30N  
R 4E

89°31'  
COR. PIPE  
13.8 TO 6" ELM EAST  
39.4 TO 6" ASPEN NW  
7.7 TO 6" PLUM WSW  
45.7 TO POW. POLE SW

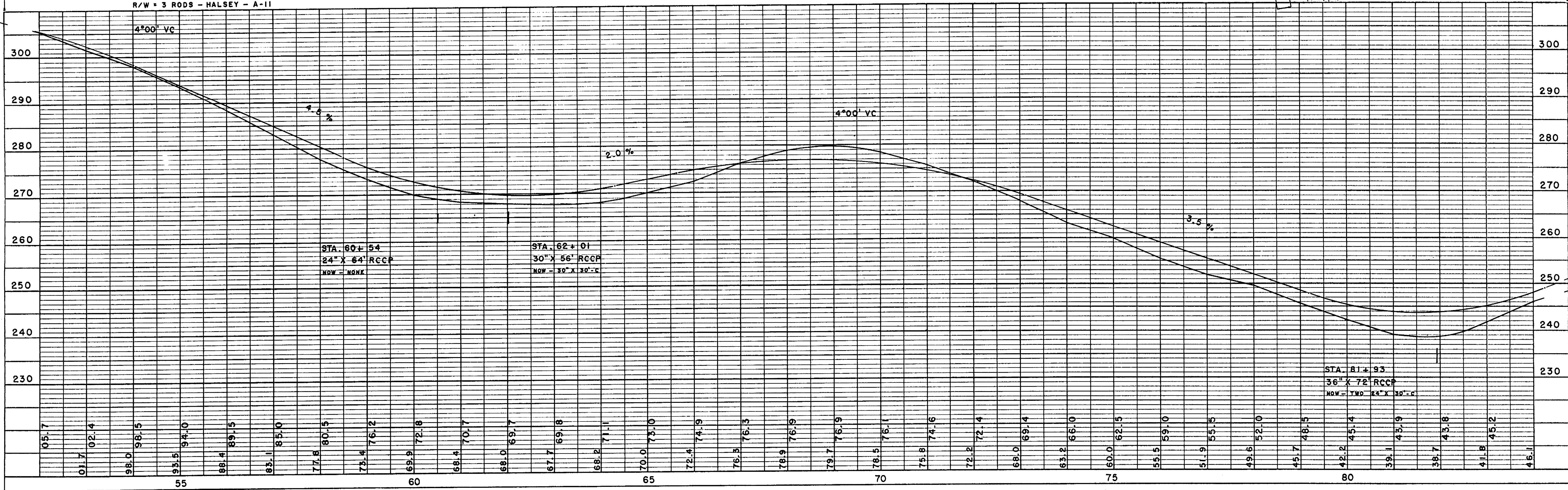


D = 10°00'  
Δ = 90°29'  
T = 577.8'  
L = 904.8'  
E = 240.8'  
PC = 72+76.9  
PT = 81+81.7

SEC. 24  
T 30N  
R 4E

SEC. 24  
T 30N  
R 4E

R/W = 3 RODS - HALSEY - A-II

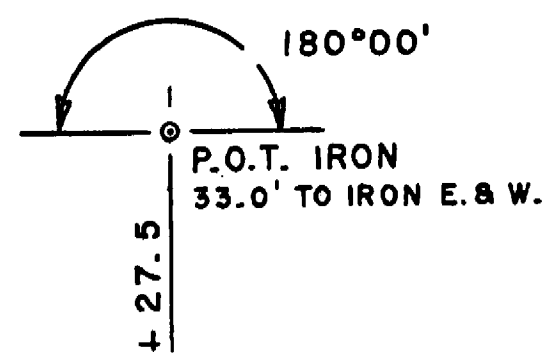


PLOTTED  
ALIGNMENT CHECKED  
NO. OF PLY SHEETS

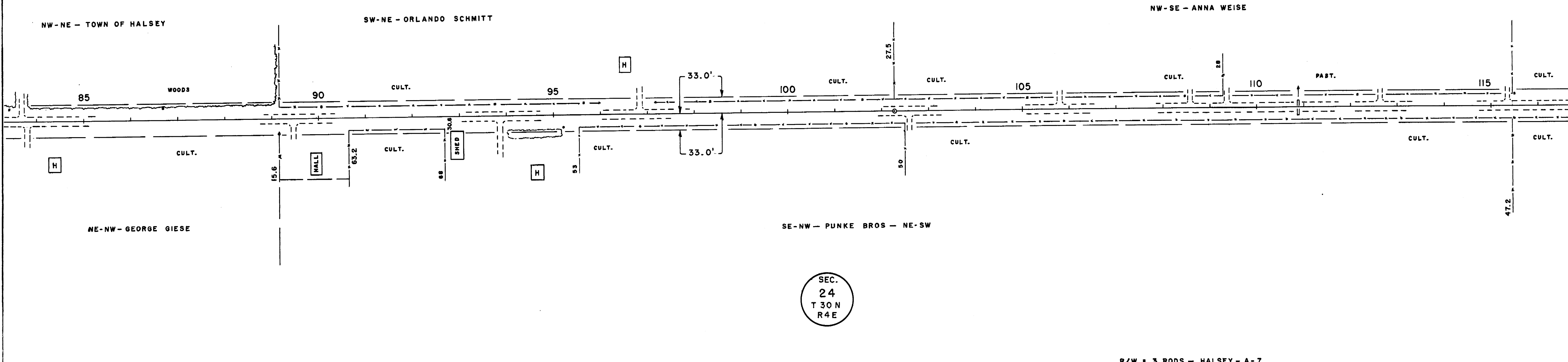
PLOTTED  
GRADES CHECKED  
STRUCTURE NOTATIONS CHKD.



BENCH MARKS			
5	89+92	N. EDGE 2ND CONC. STEP	270.80
6	121+27	TOP NE PARAPET	221.82

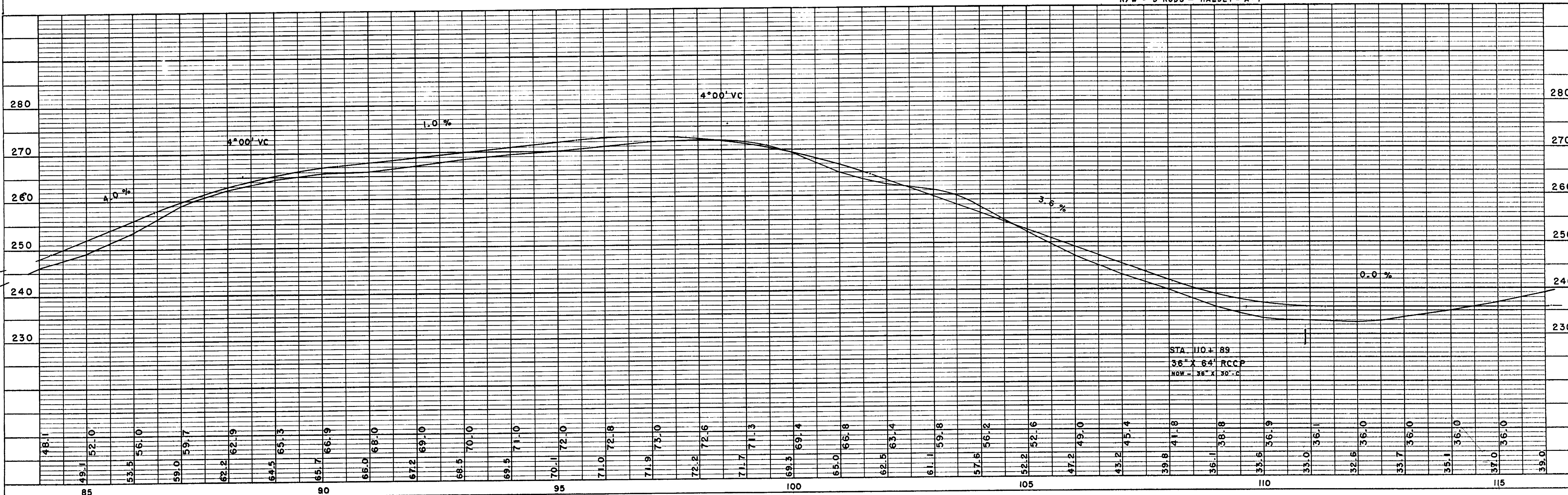


SEC.  
24  
T 30N  
R 4E



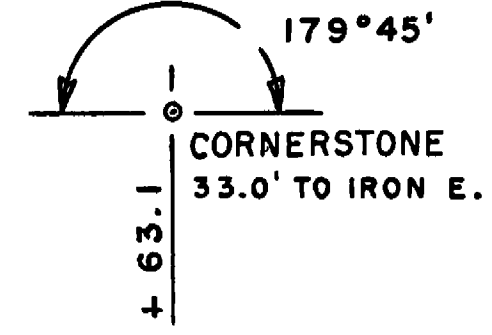
SURVEYED  
 PLOTTED  
 CHECKED  
 NO. OF WAY CHECKED  
 NO.

PLOTTED  
 CHECKED  
 B.M.'S ADDED  
 SYMBOLES NOTATED  
 NO.



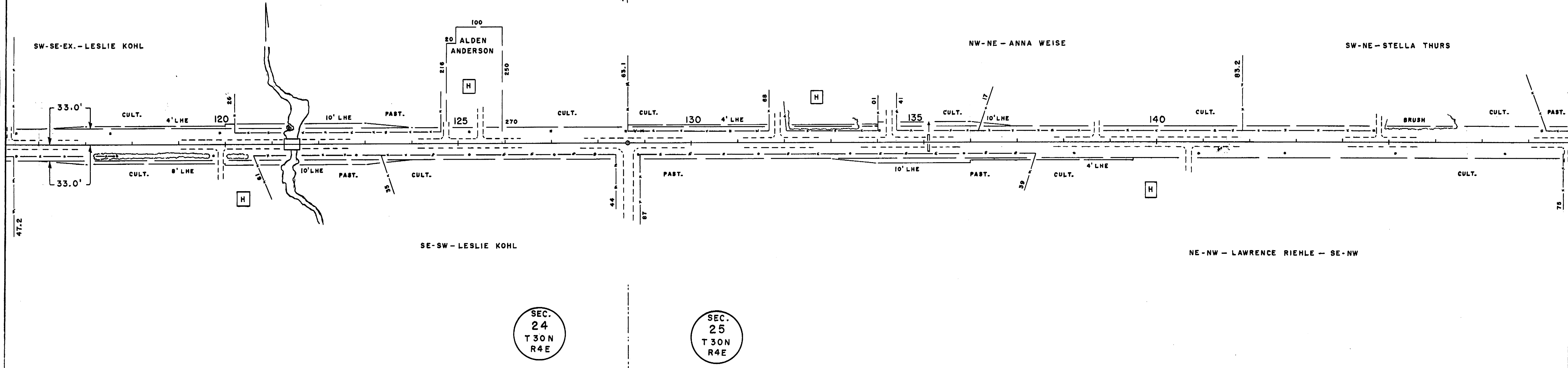
BENCH MARKS			
6	121+27	TOP NE PARAPET	221.82'
7	123+29	SPIKE IN 12" PINE	35'L 228.30

SEC. 24  
T 30N  
R 4E



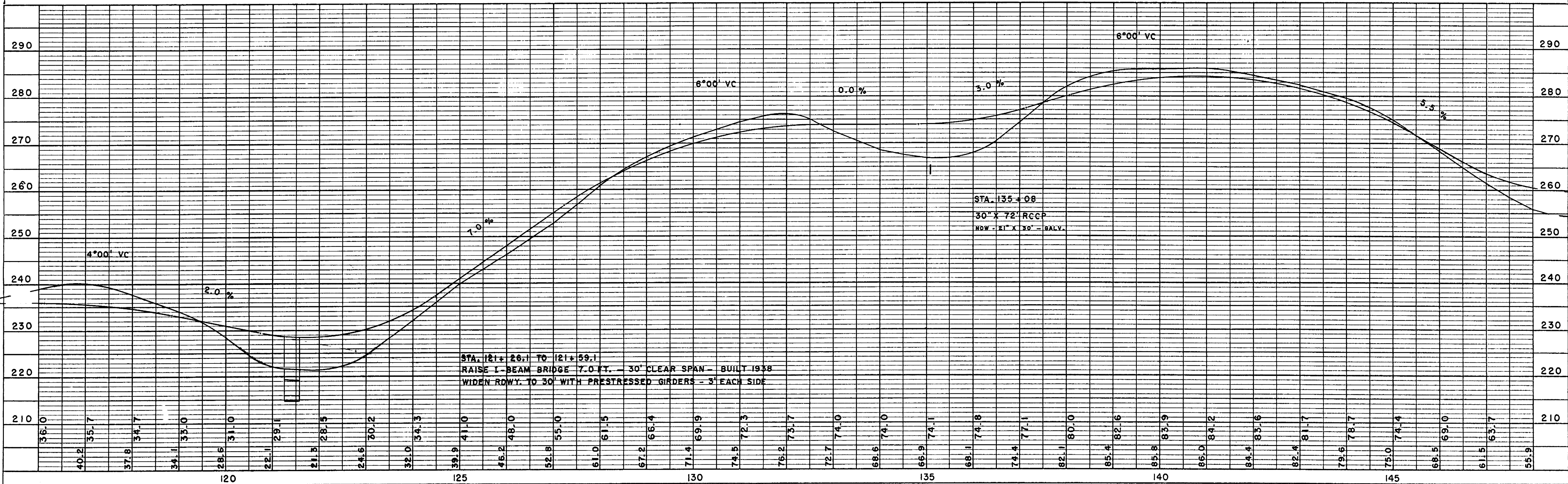
SEC. 25  
T 30N  
R 4E

NOTE BOOK NO. \_\_\_\_\_  
PLOTTED \_\_\_\_\_  
ALIGNMENT CHECKED \_\_\_\_\_  
RT. OF WAY CHECKED \_\_\_\_\_



R/W = 3 RODS - HALSEY - A-7

NOTE BOOK NO. \_\_\_\_\_  
PLOTTED \_\_\_\_\_  
GRADES CHECKED \_\_\_\_\_  
STRUCTURE NOTAS OK'D \_\_\_\_\_



BENCH MARKS				
8	150+79	SPIKE IN 6" ASPEN	50' R	259.12
9	163+51	" " 15" PINE	35' R	289.11

SEC.  
25  
T 30N  
R 4E

NOTE BOOK  
NO. \_\_\_\_\_  
PLOTTED  
ALIGNMENT CHECKED  
BY: OF WAY CHECKED

P.I. IRON  
40.8 TO POW. POLE SE  
41.2 TO " NE  
34.5 TO FENCE COR. NW  
24.5 TO 8" ELM SSW

D = 10°00'  
Δ = 90°12'  
T = 575.0'  
L = 902.0'  
E = 238.8'  
PC = 149 + 29.1  
PT = 158 + 31.1

D = 10°00'  
Δ = 89°46'  
T = 570.6'  
L = 897.7'  
E = 235.7'  
PC = 172 + 69.2  
PT = 181 + 66.9

R/W - HALSEY - A-5 = 4 RODS - 1862 - ALSO - A-33 = 3 RODS - 1880

NOTE BOOK  
NO. \_\_\_\_\_  
PLOTTED  
GRADES CHECKED  
BY: GRADES  
STRUCTURE DATUMS CHAD.

