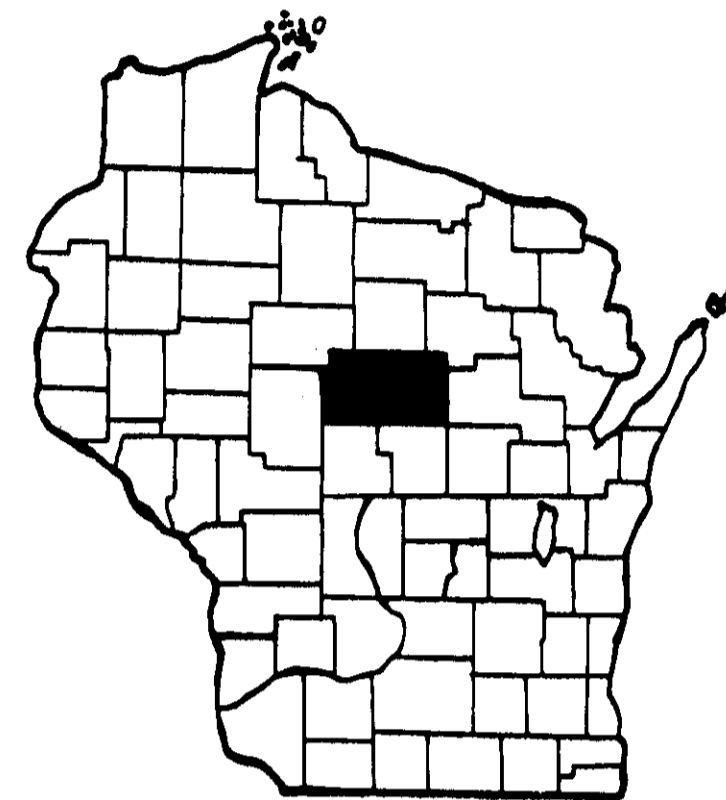


MARATHON COUNTY HIGHWAY DEPARTMENT

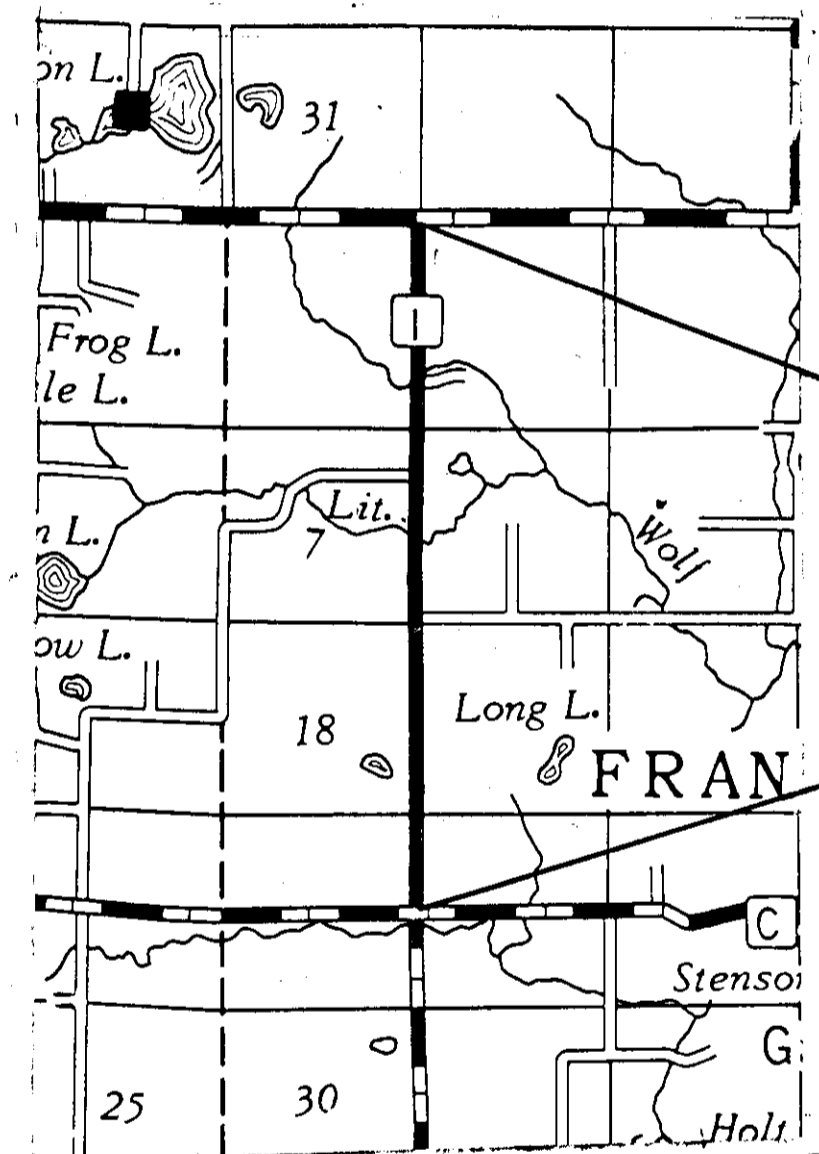
PLAN AND PROFILE OF PROPOSED

CTH "I"

CTH "C" TO STH 153



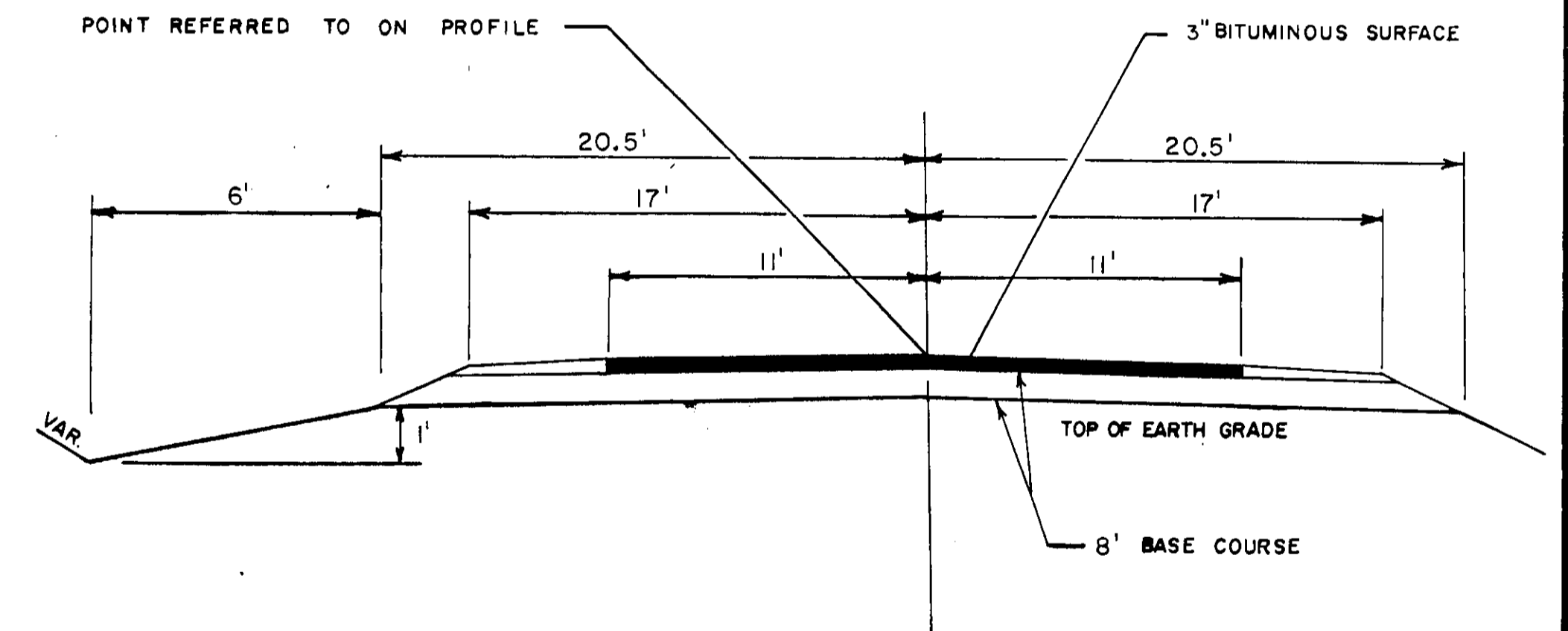
	BEEN	HALESY	HAMBURG	BERLIN	MAINE	TEXAS	NEWITT	HARRISON
HOLTON	JOHNSON	METROPOLE	RIB FALLS	STETTIN	MAINE	MAUISAU	EASTON	PLUYER
HULL	FRANKFORD	WIDE	CASSEL	MARATHON	RIB MT.	WESTON	MINNIE	NORRIS
SPRINGTON	EAU CLAIRE	CLEVELAND	EMMET	MONROE	SPRINGWATER	NEID	ELMERSON	
SPENCER	MCILLAN	RAY	GREEN VALLEY	BERGEN	WINDYBUSH	QUENTNER	BEVEN	FRANKLIN



END PROJECT
STA. 321+31.68

BEGIN PROJECT
STA. 131+60.70

TYPICAL 34' SECTION



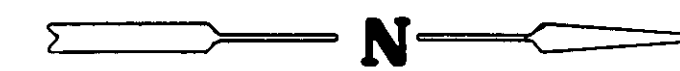
LEGEND

NEW RIGHT-OF-WAY	—————
PRESENT RIGHT-OF-WAY	-----
PROPERTY LINE	- - - - - PL - - - - -
WELL	⊞
TELEPHONE CABLE	— T — T —
POWER CABLE	— P — P —
GAS LINE	— G — G —
POWER POLE	⬛
TELEPHONE POLE	⊙
TELEPHONE PEDESTAL	⊙
GUY POLE	⊙
TRANSMISSION TOWER & LINE	⊗
FENCE	— x — x —
TRAVELED WAY	-----

SCALE = 1" = 100'

NET LENGTH OF CENTERLINE = 3.593 Mi.

BENCH MARKS			
NO.	STATION	DESCRIPTION	ELEV.
1	132+00	SPIKE IN TEL. POLE/PED.	40' LT. 1202.93



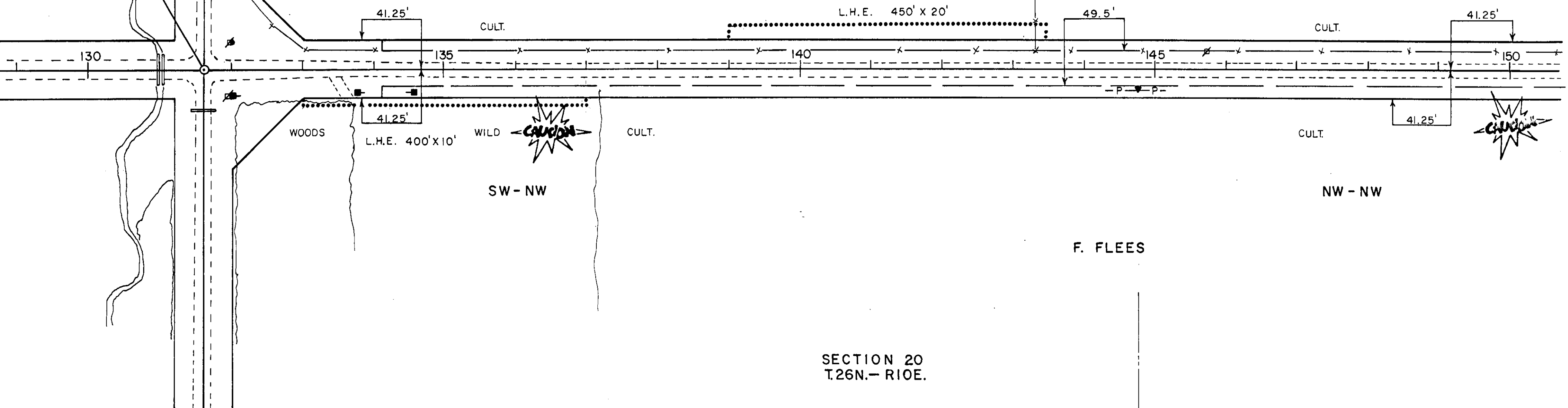
SECTION 19
T. 26 N. - R. 10 E.

19
20
STA. 131+60.70

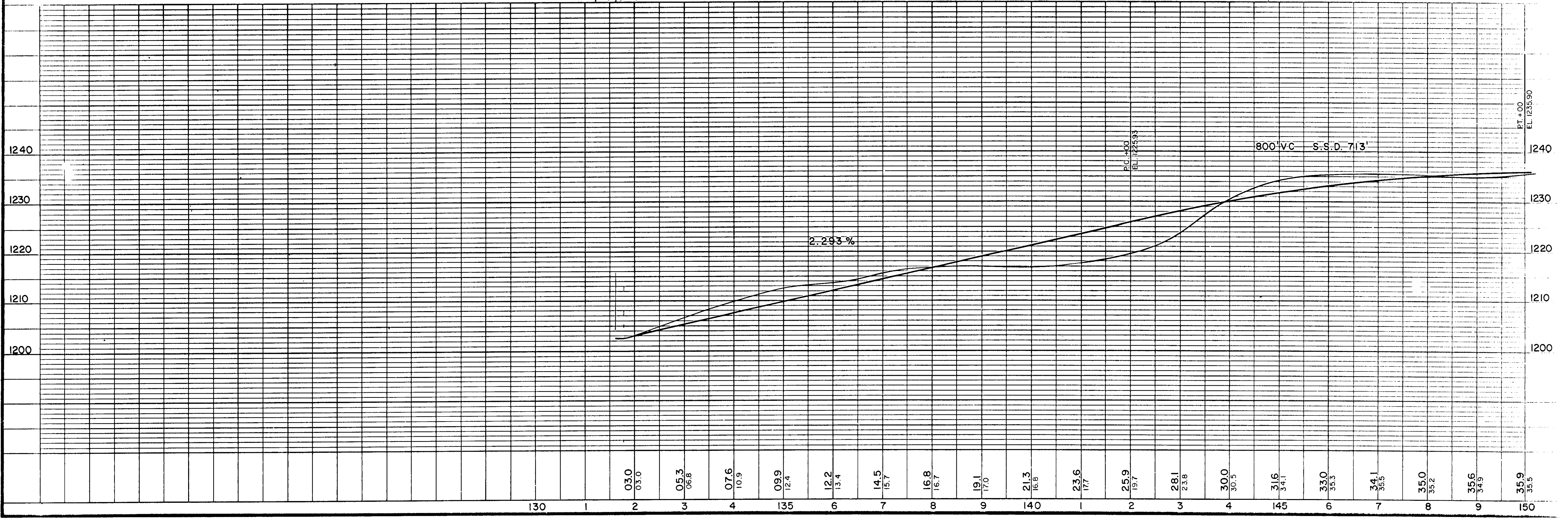
SE-NE

H. KASPROWICZ

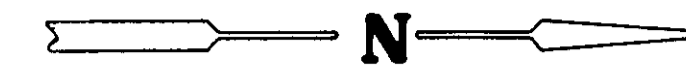
NE-NE



SECTION 20
T. 26 N. - R. 10 E.

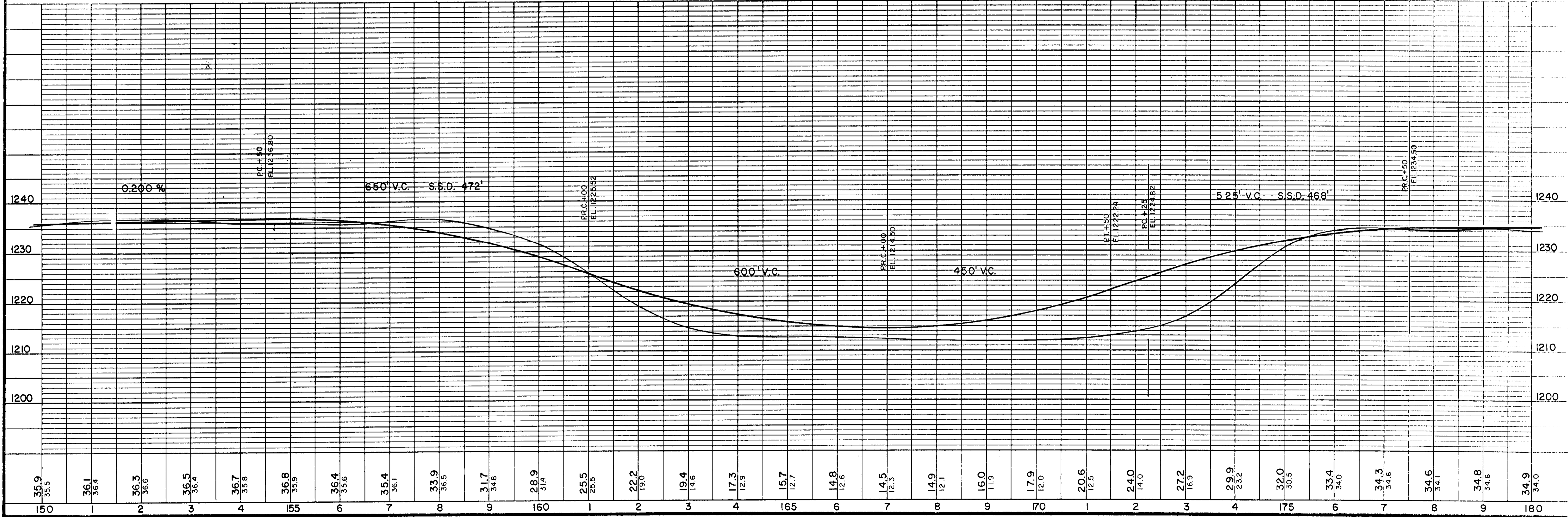
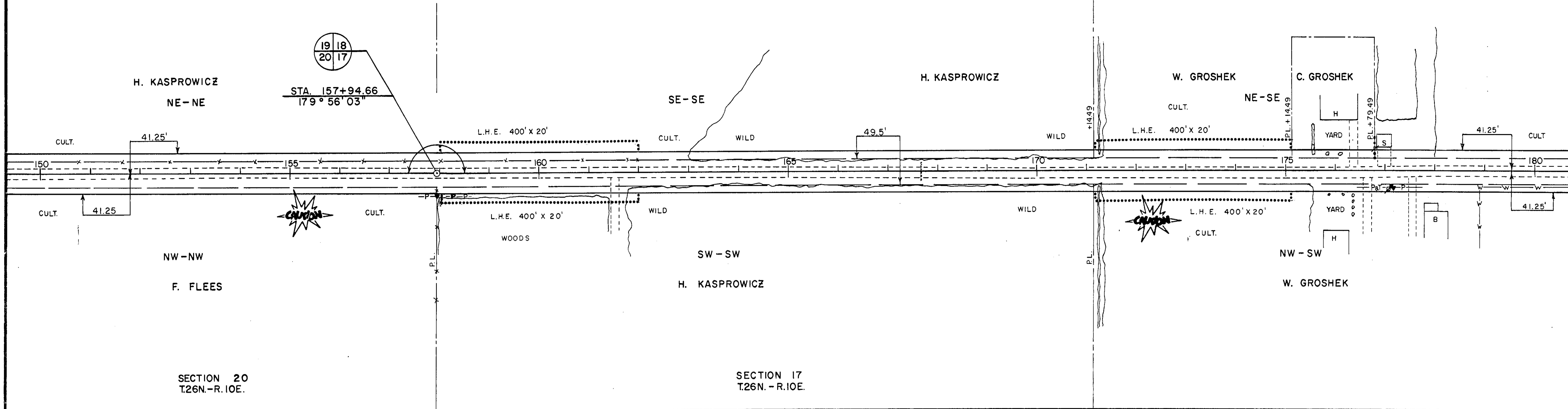


BENCH MARKS				
NO.	STATION	DESCRIPTION		ELEV.
2	158+00	SPIKE IN TWIN OAK	84' RT.	1238.80
3	169+40	SPIKE IN 14" TAMARACK	81' RT.	1211.79



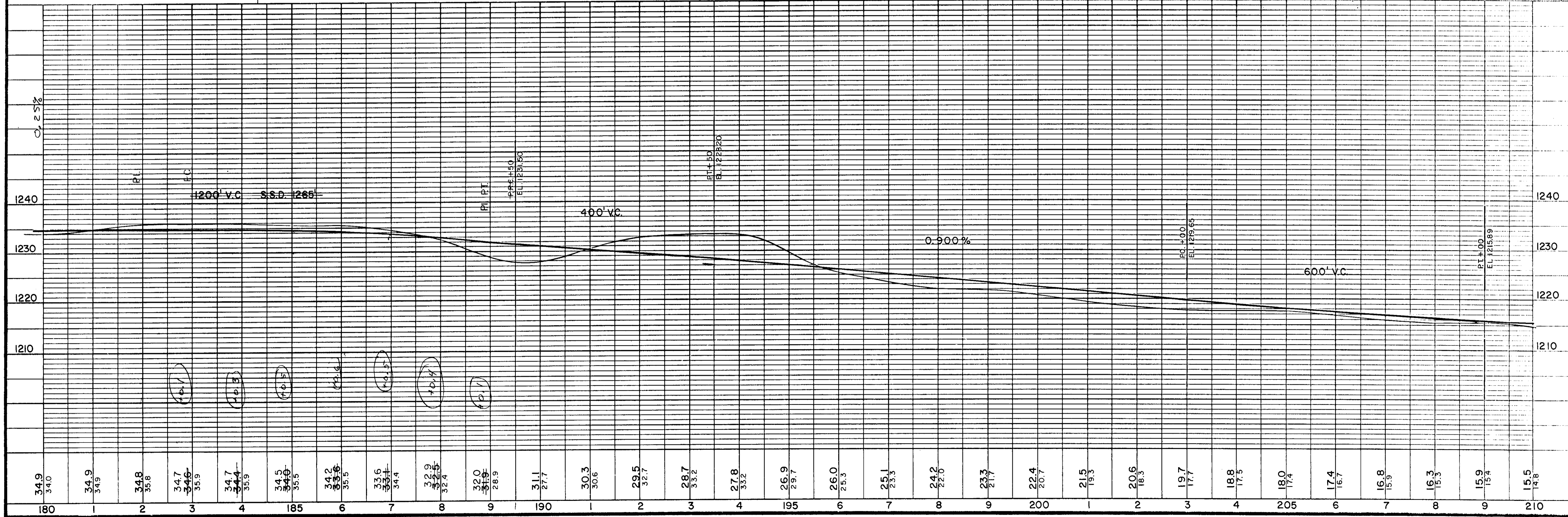
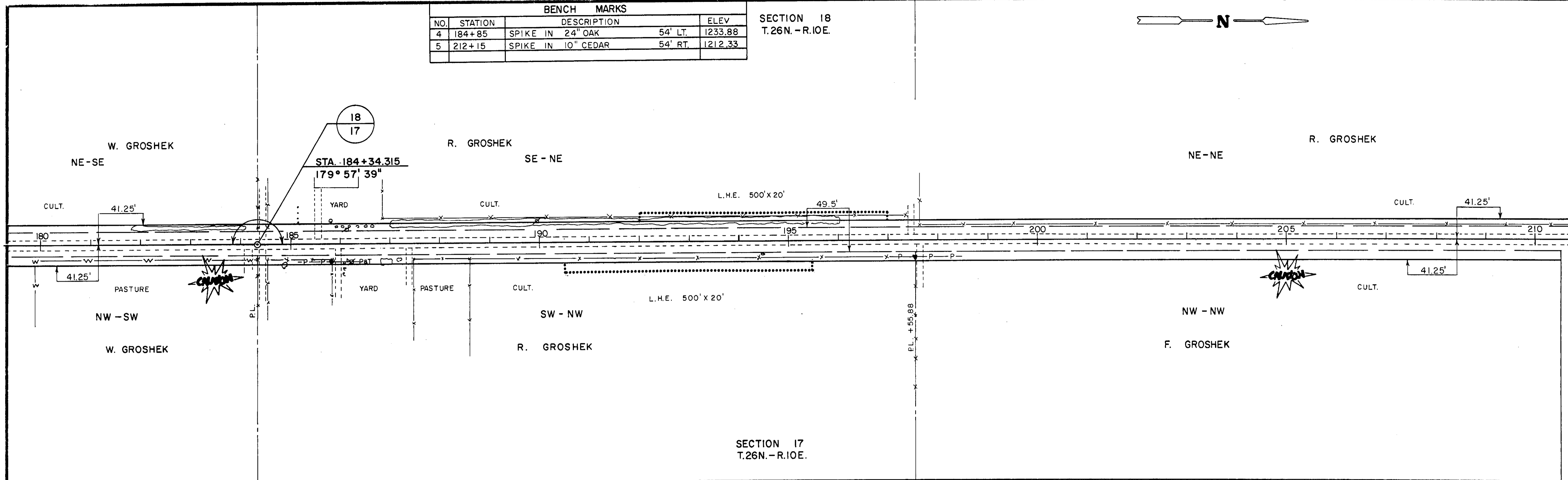
SECTION 19
T.26N.-R.10E.

SECTION 18
T.26N.-R.10E.



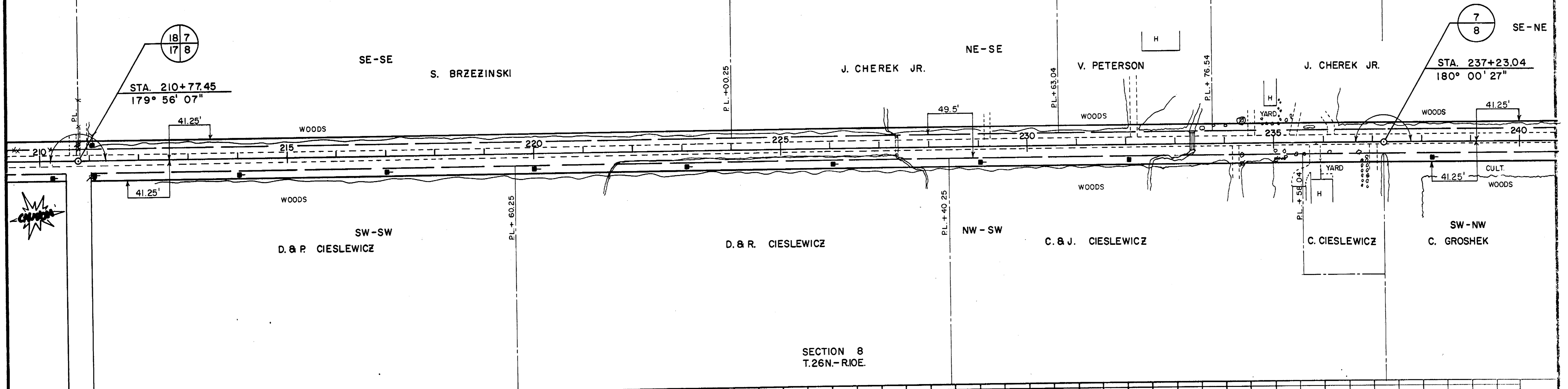
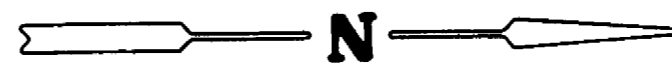
BENCH MARKS			
NO.	STATION	DESCRIPTION	ELEV
4	184+85	SPIKE IN 24" OAK	54' LT. 1233.88
5	212+15	SPIKE IN 10" CEDAR	54' RT. 1212.33

SECTION 18
T.26N. - R.10E.

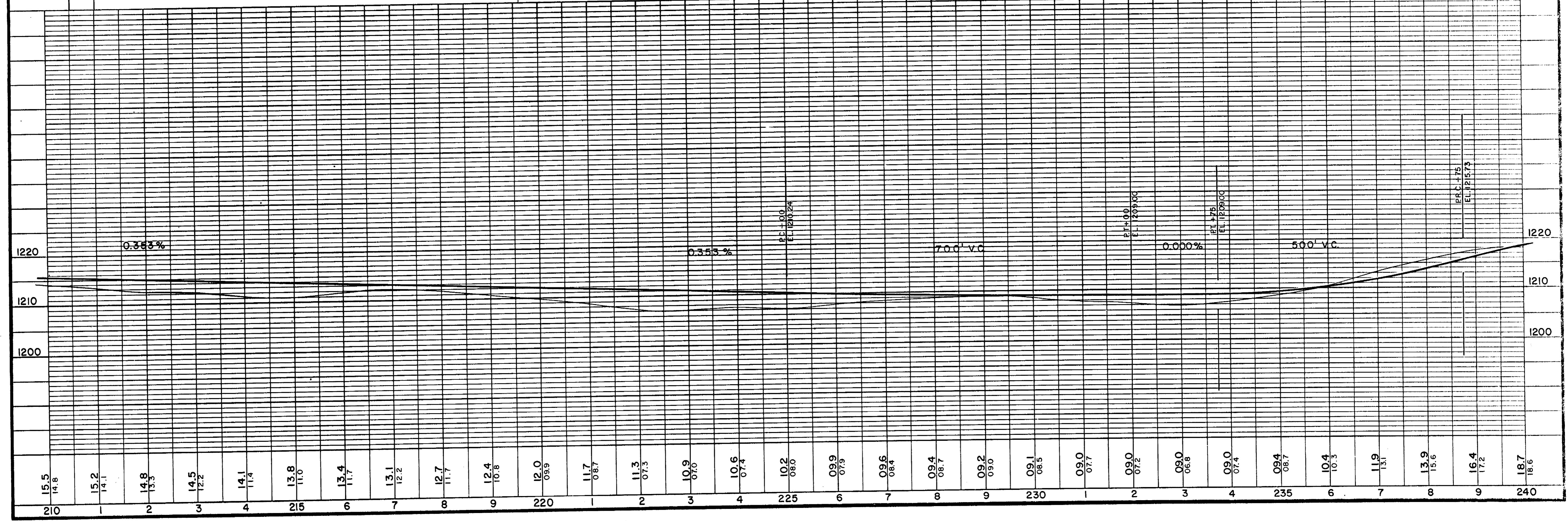


BENCH MARKS			
NO.	STATION	DESCRIPTION	ELEV.
5	212+15	SPIKE IN 10" CEDAR 54' RT.	1212.38
6	225+90	SPIKE IN 18" PINE 51' RT.	1207.55
7	238+05	SPIKE IN 12" ASPEN 100' RT.	1207.40

SECTION 7
T.26N.-R.10E.



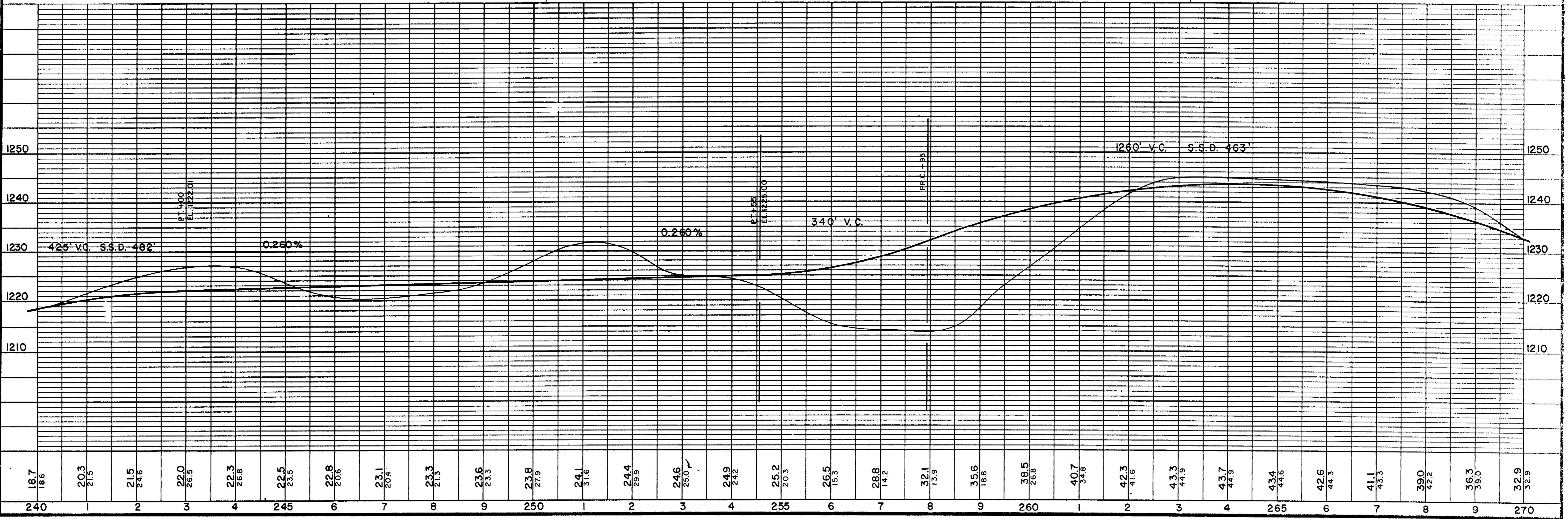
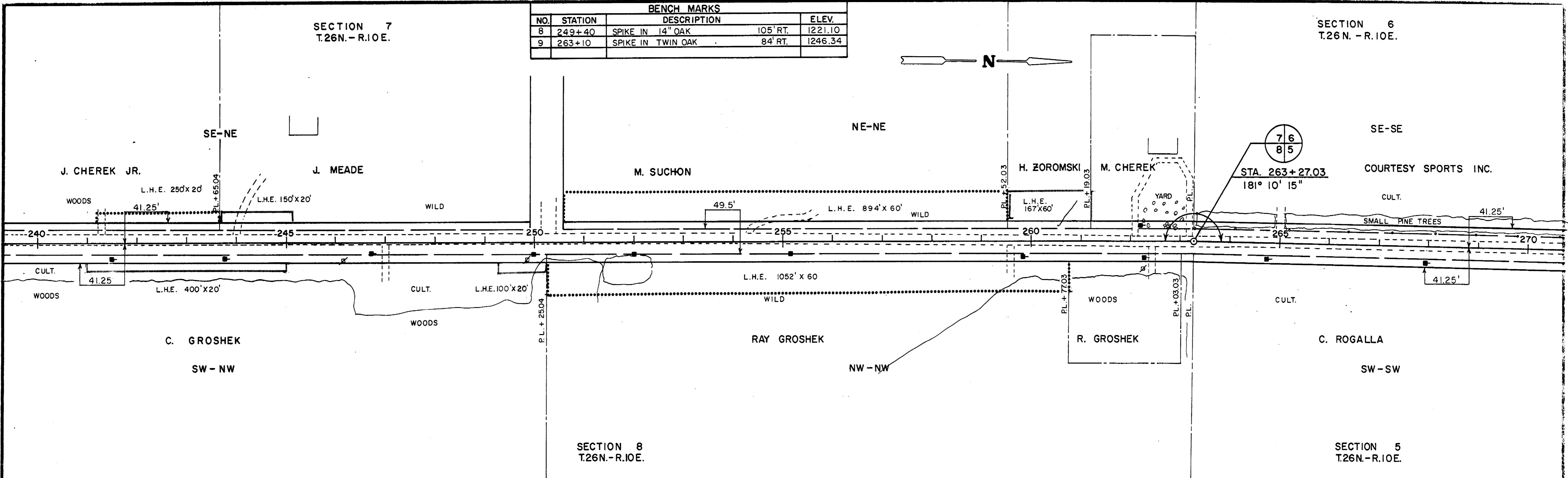
SECTION 8
T.26N.-R.10E.



SECTION 7
T.26N.-R.10E.

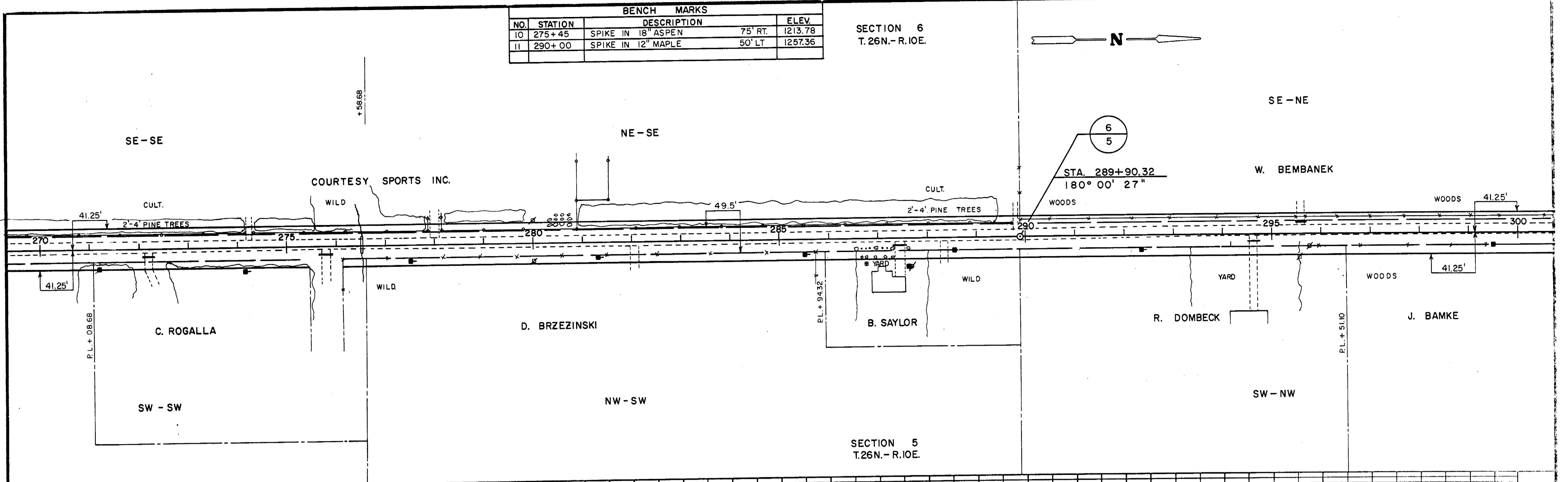
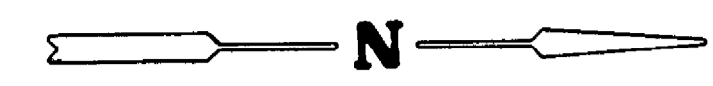
BENCH MARKS				
NO.	STATION	DESCRIPTION		ELEV.
8	249+40	SPIKE IN 14" OAK	105' RT.	1221.10
9	263+10	SPIKE IN TWIN OAK	84' RT.	1246.34

SECTION 6
T.26N.-R.10E.

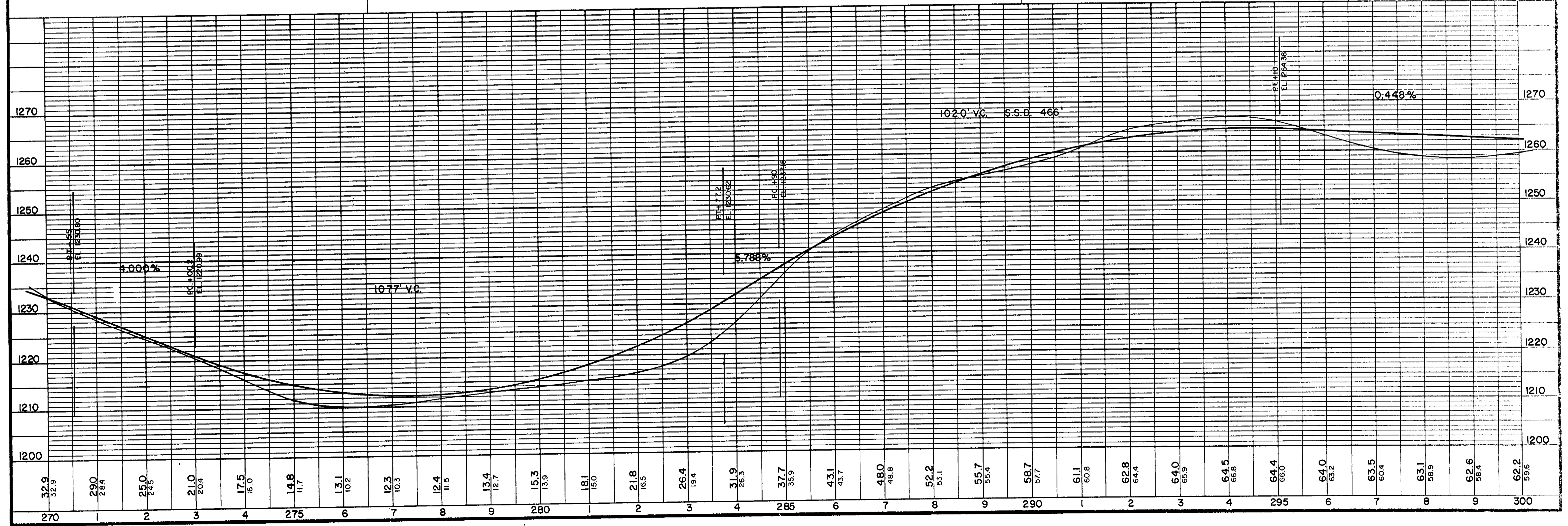


BENCH MARKS				
NO.	STATION	DESCRIPTION		ELEV.
IO	275+45	SPIKE IN 18" ASPEN	75' RT.	1213.78
II	290+00	SPIKE IN 12" MAPLE	50' LT.	1257.36

SECTION 6
T.26N.-R.10E.

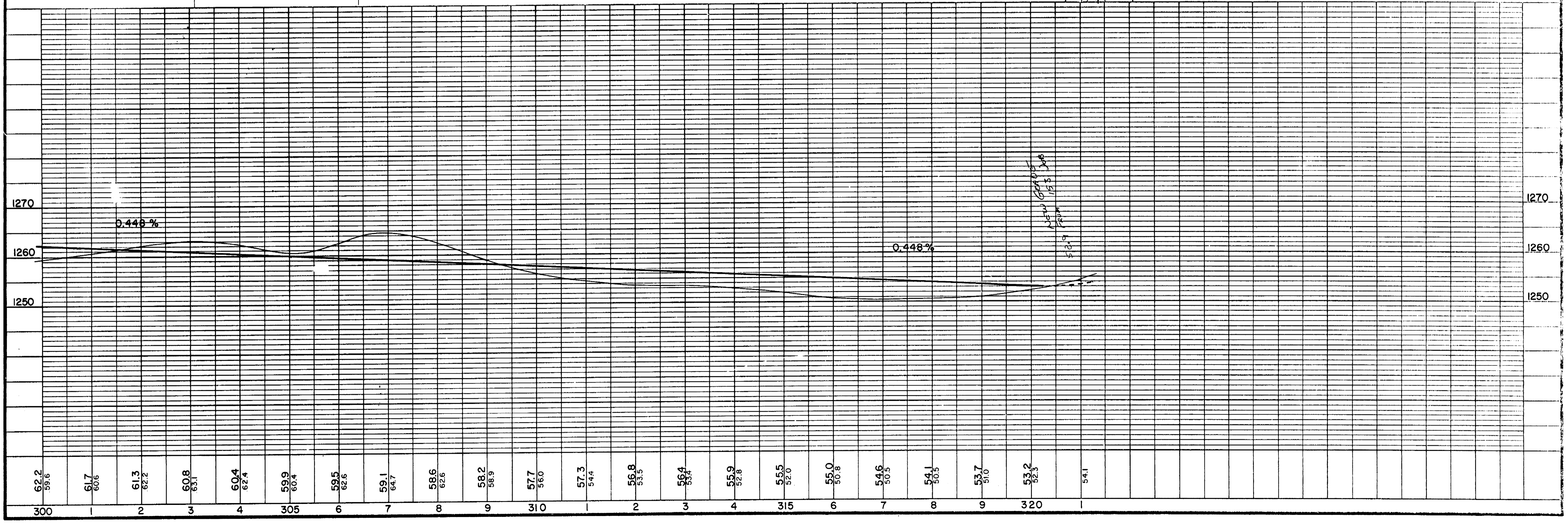
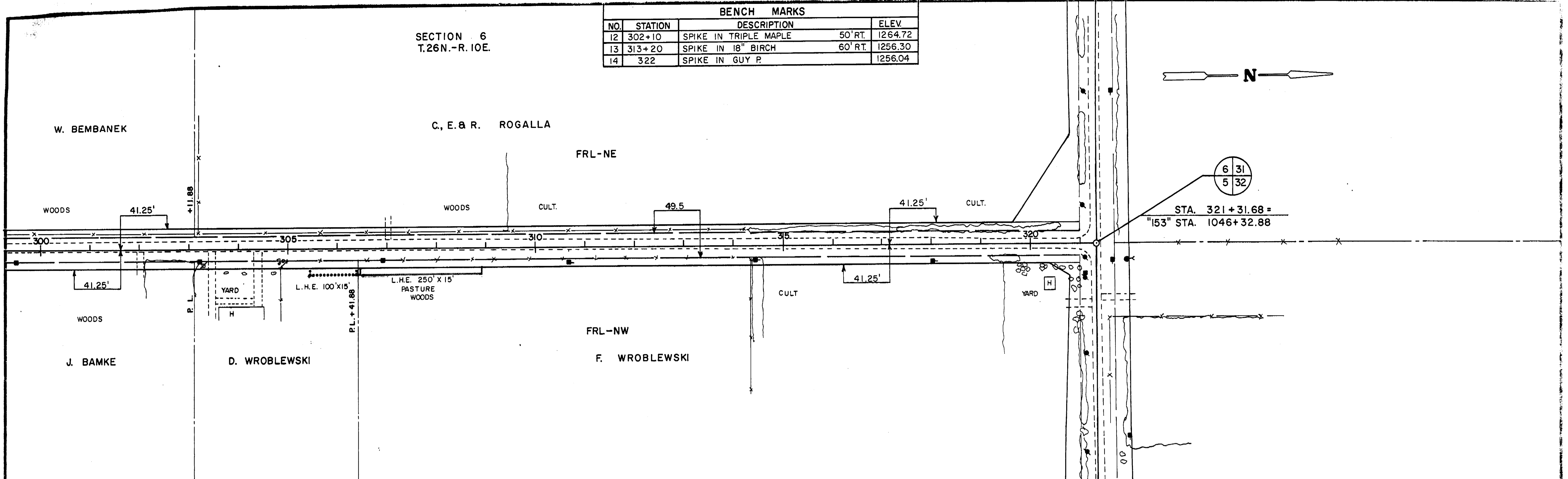
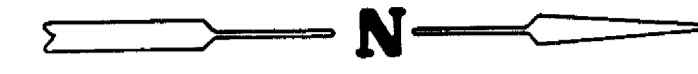


SECTION 5
T.26N.-R.10E.



BENCH MARKS				
NO.	STATION	DESCRIPTION		ELEV.
12	302+10	SPIKE IN TRIPLE MAPLE	50' RT.	1264.72
13	313+20	SPIKE IN 18" BIRCH	60' RT.	1256.30
14	322	SPIKE IN GUY P.		1256.04

SECTION 6
T.26N.-R.10E.



*New Grades
from 1953*