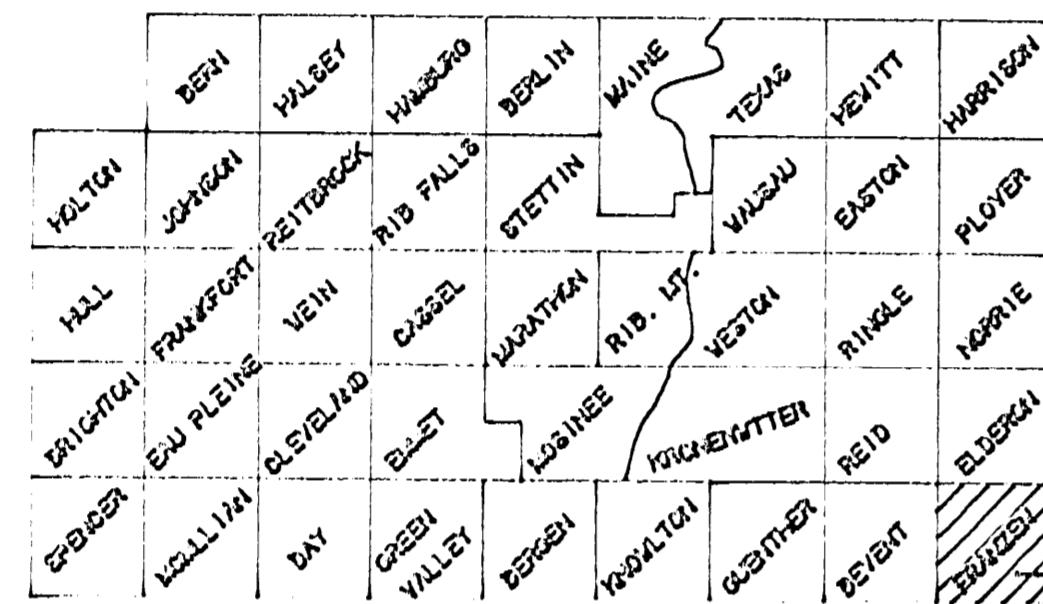


MARATHON COUNTY HIGHWAY DEPARTMENT

PLAN AND PROFILE OF PROPOSED

C.T.H. "VV"

S.T.H 49 TO EAST COUNTY LINE

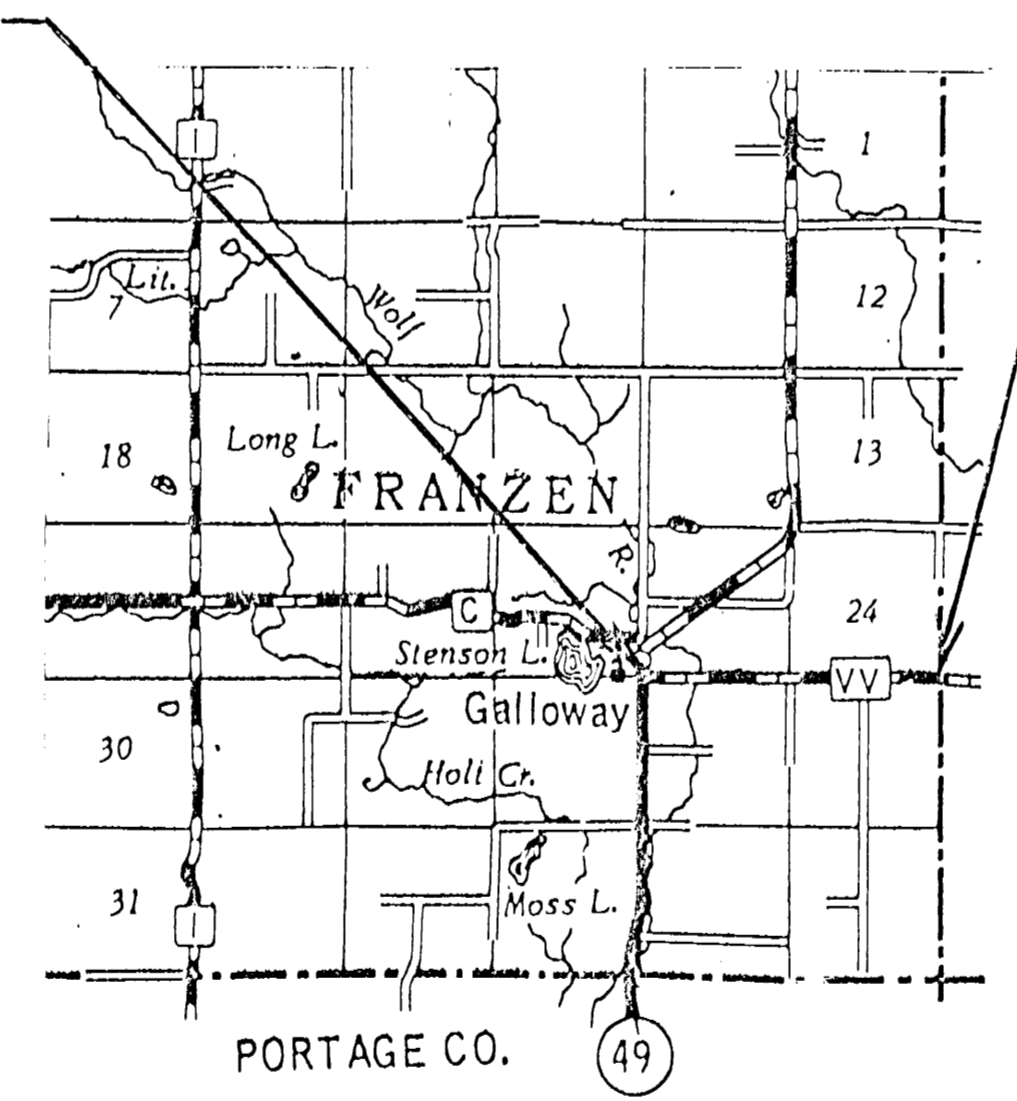


BEGIN PROJECT
STA. 100+00.00

END CONSTRUCTION
STA. 204+53.24

LEGEND

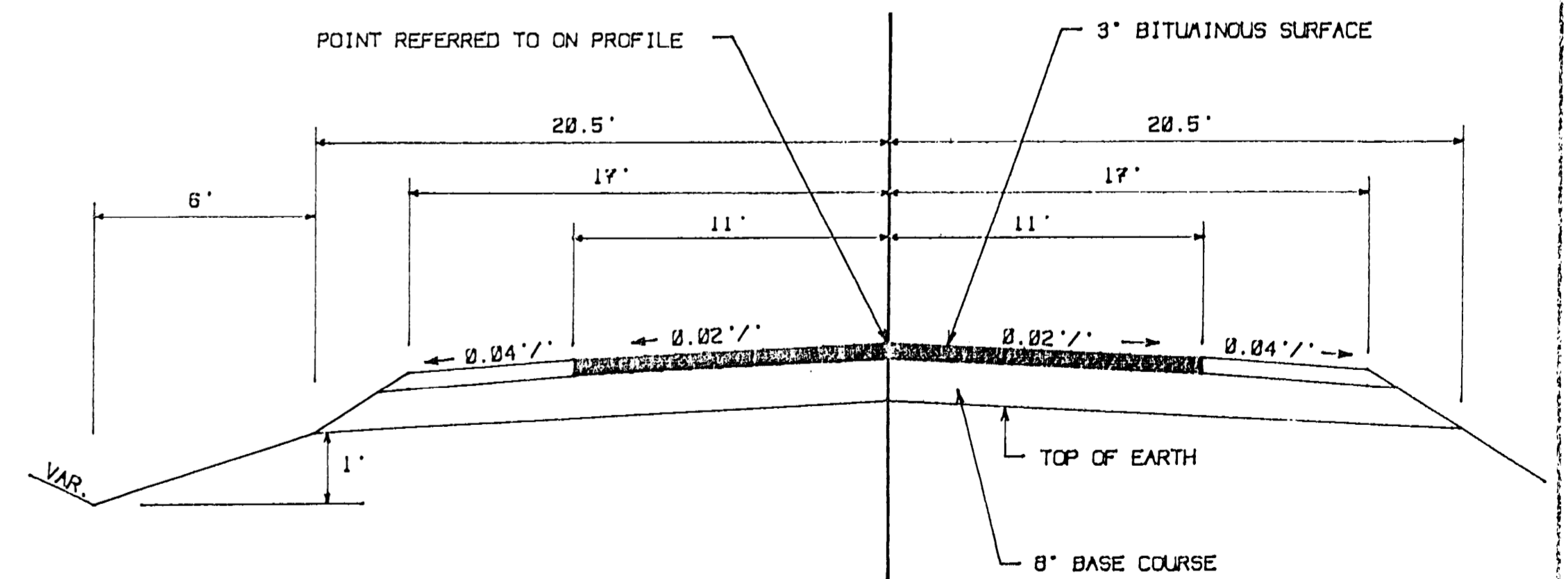
NEW RIGHT-OF-WAY	—————
PRESENT RIGHT-OF-WAY	—————
PROPERTY LINE	----- P.L. -----
WELL	⊠
TELEPHONE CABLE	— T — T — T —
POWER CABLE	— P — P — P —
GAS LINE	— O — O — O —
POWER POLE	⊠
TELEPHONE POLE	⊠
TELEPHONE PEDESTAL	⊠
GUY POLE	⊠
TRANSMISSION TOWER & LINE	— X —
FENCE	— x — x — x —
TRAVELED WAY	===== ===== =====

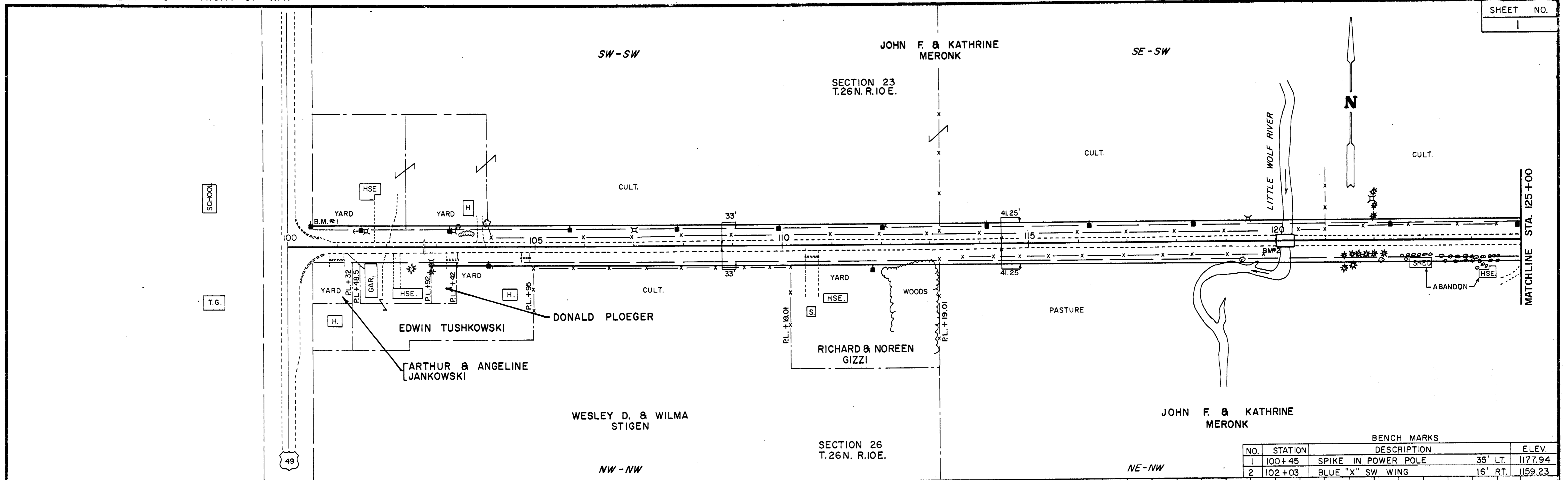


SCALE = 1" = 100'

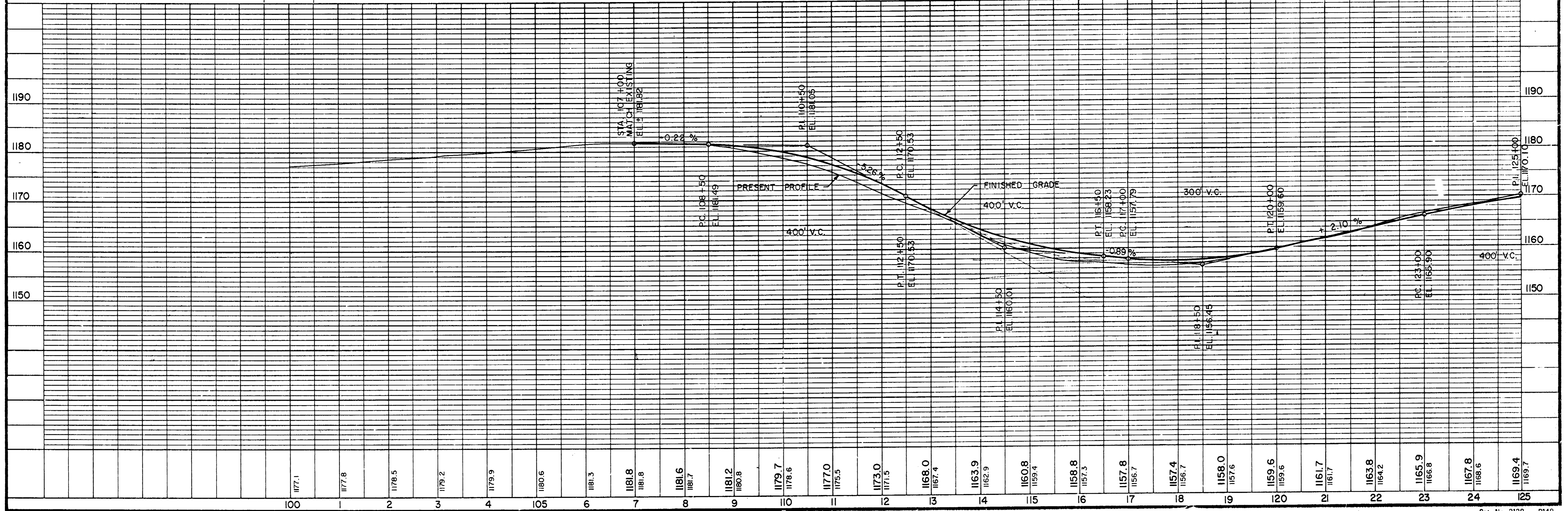
NET LENGTH OF CENTERLINE = 1.979 MILES

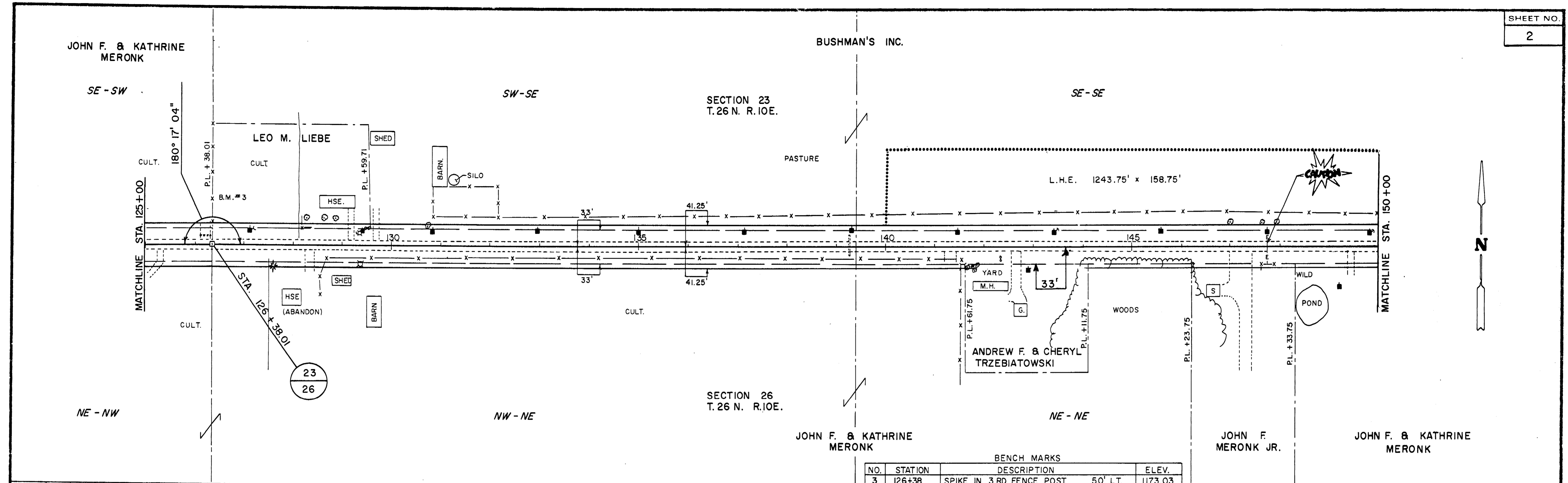
TYPICAL 34' SECTION



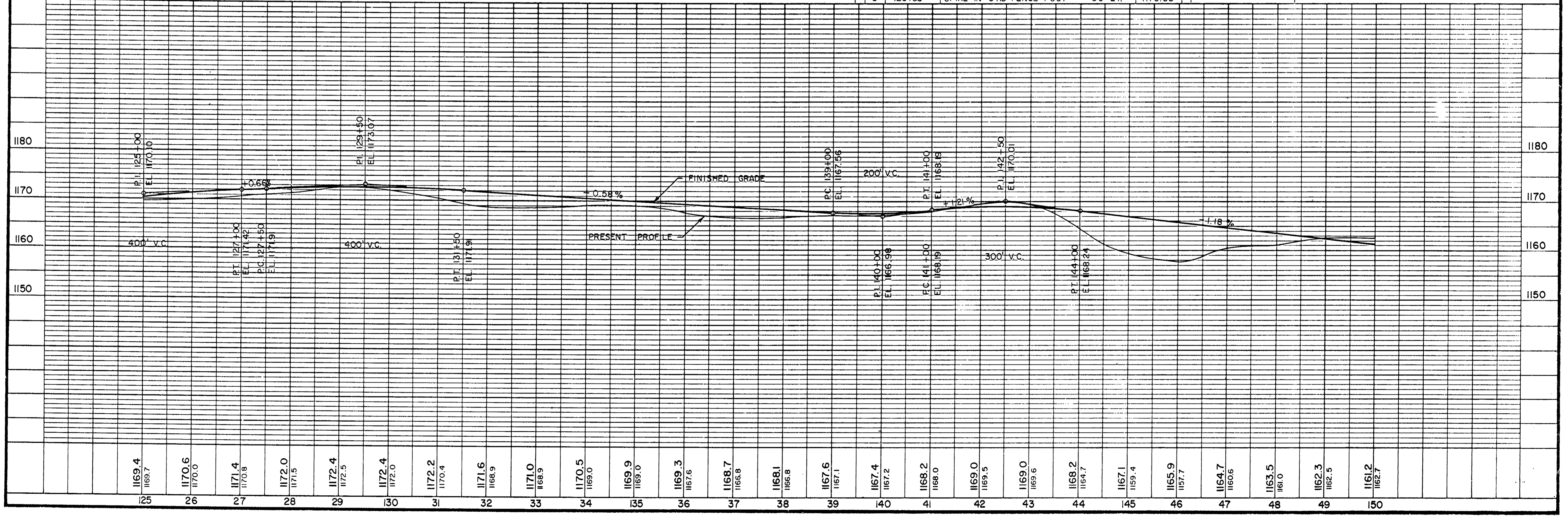


BENCH MARKS		DESCRIPTION	ELEV.
NO.	STATION		
1	100+45	SPIKE IN POWER POLE	35' LT. 1177.94
2	102+03	BLUE "X" SW WING	16' RT. 1159.23





BENCH MARKS			
NO.	STATION	DESCRIPTION	ELEV.
3	126+38	SPIKE IN 3 RD FENCE POST 50' LT.	1173.03



SECTION 23
T.26N. R.10E.

BUSHMAN'S INC.

SE - SE

ARCHIE KLUCK, LARRY KLUCK,
ROBERT KLUCK, ALLEN KLUCK & WILLIAM KLUCK

SW - SW

SECTION 24
T.26 N. R.10E.

HENRY J. & AGNES S.
FILTZ

SE - SW

SECTION 26
T.26 N. R.10E.

NE - NE

JOHN F. & KATHRINE
MERONK

JOHN F. & KATHRINE
MERONK

SECTION 25
T.26 N. R.10E.

EDWARD J.
OSTROWSKI

NE - NW

ESTHER L.
OSTROWSKI

PASTURE
L.H.E. 1243.75' x 157.75'

CULT.

WOODS
L.H.E. 58.75' x 150'

WILD

CULT.

PASTURE

LOW AREA

MATCHLINE STA. 150+00

CEDAR ROAD

STA. 152+143.75

MATCHLINE STA. 175+00

P.L. +43.75

179° 45' 26"

B.M. #4

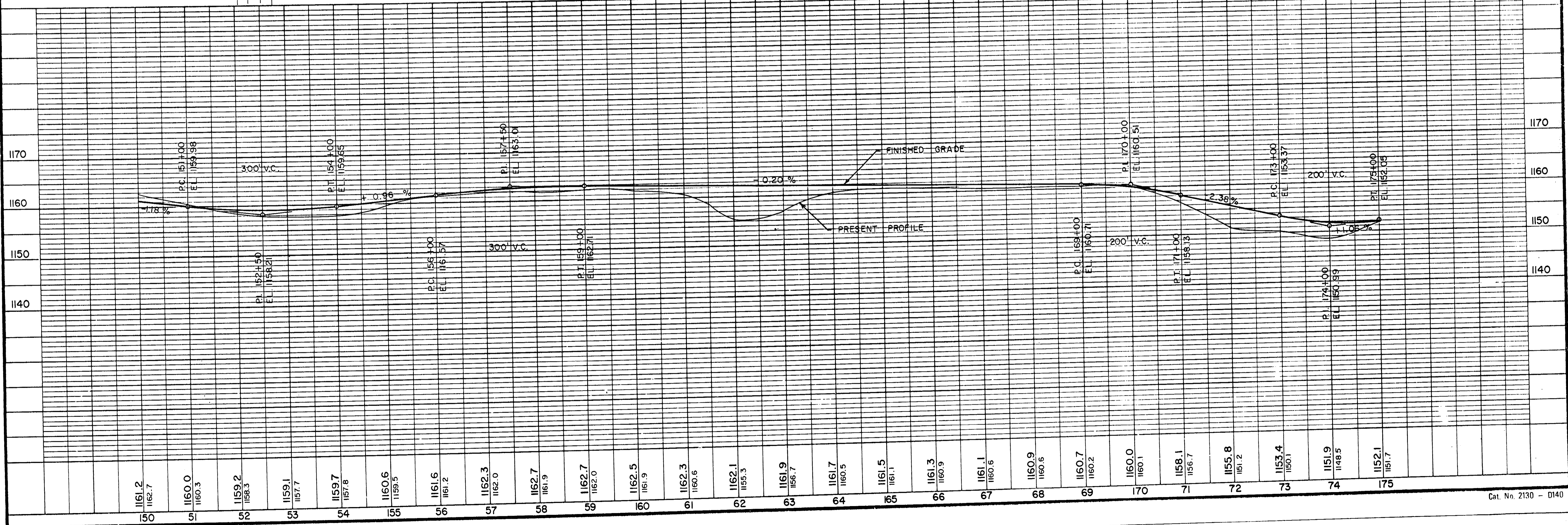
23 24
26 25

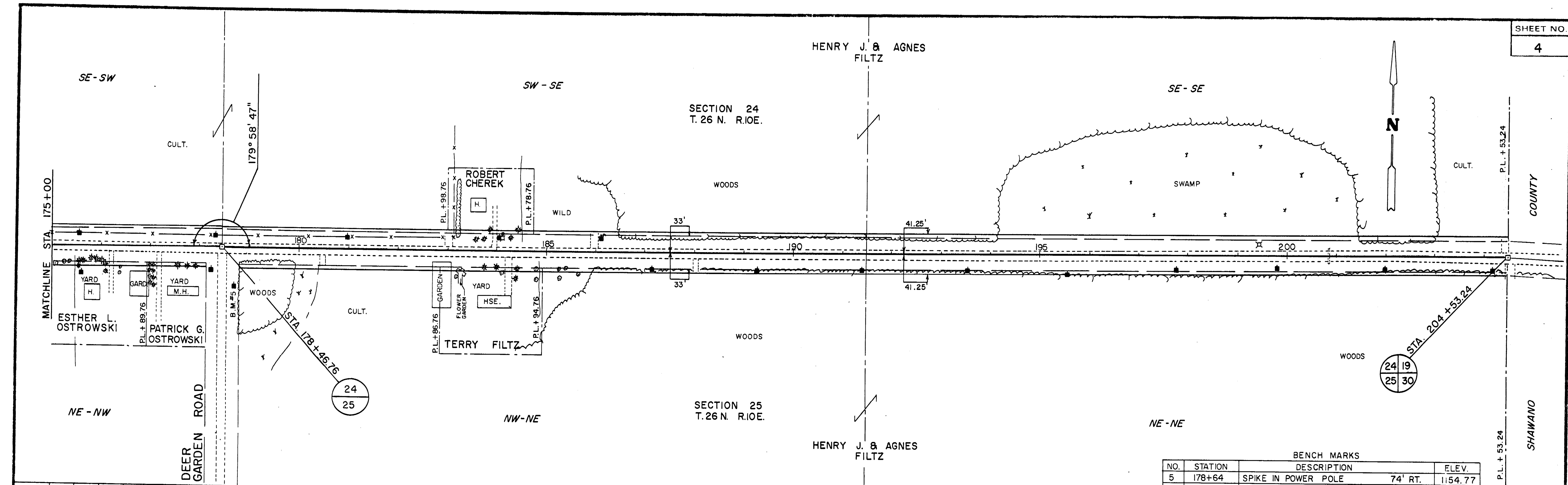
BETTY M.
KOSTUCH

P.L. +45.26

P.L. +86.76

BENCH MARKS			
NO.	STATION	DESCRIPTION	ELEV.
4	152+20	SPIKE IN POWER POLE	45' RT. 1159.54





BENCH MARKS			
NO.	STATION	DESCRIPTION	ELEV.
5	178+64	SPIKE IN POWER POLE 74' RT.	1154.77

