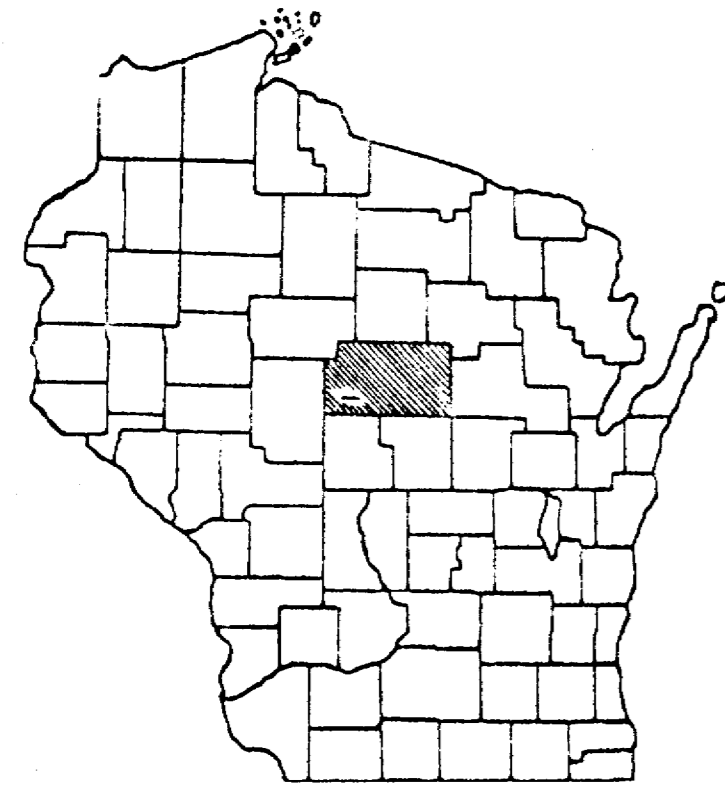


INDEX OF SHEETS

SHEET NO. 1	TITLE	
SHEET NO.	TYPICAL CROSS SECTIONS	
SHEET NO.	ESTIMATE OF QUANTITIES	
SHEET NO.	MISCELLANEOUS QUANTITIES	
SHEET NO.	RIGHT OF WAY PLAT	
SHEET NO.	PLAN AND PROFILE STA.	TO STA.
SHEET NO.	STANDARD DETAILS	
SHEET NO.	DRAINAGE STRUCTURES	
SHEET NO.	CROSS SECTIONS	

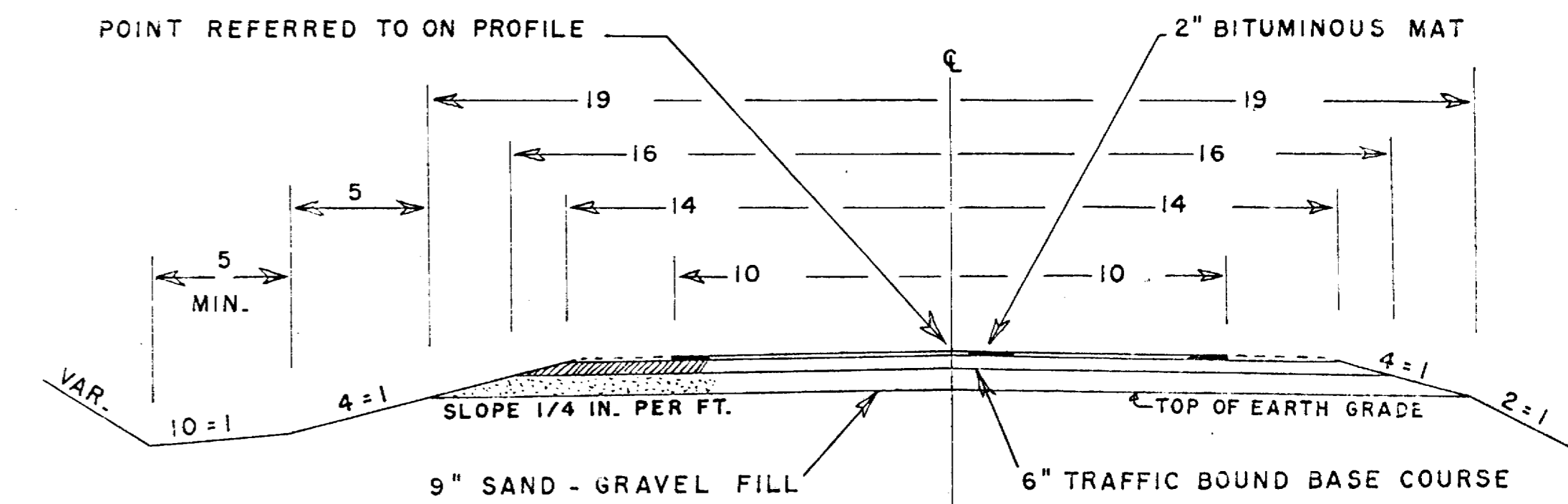
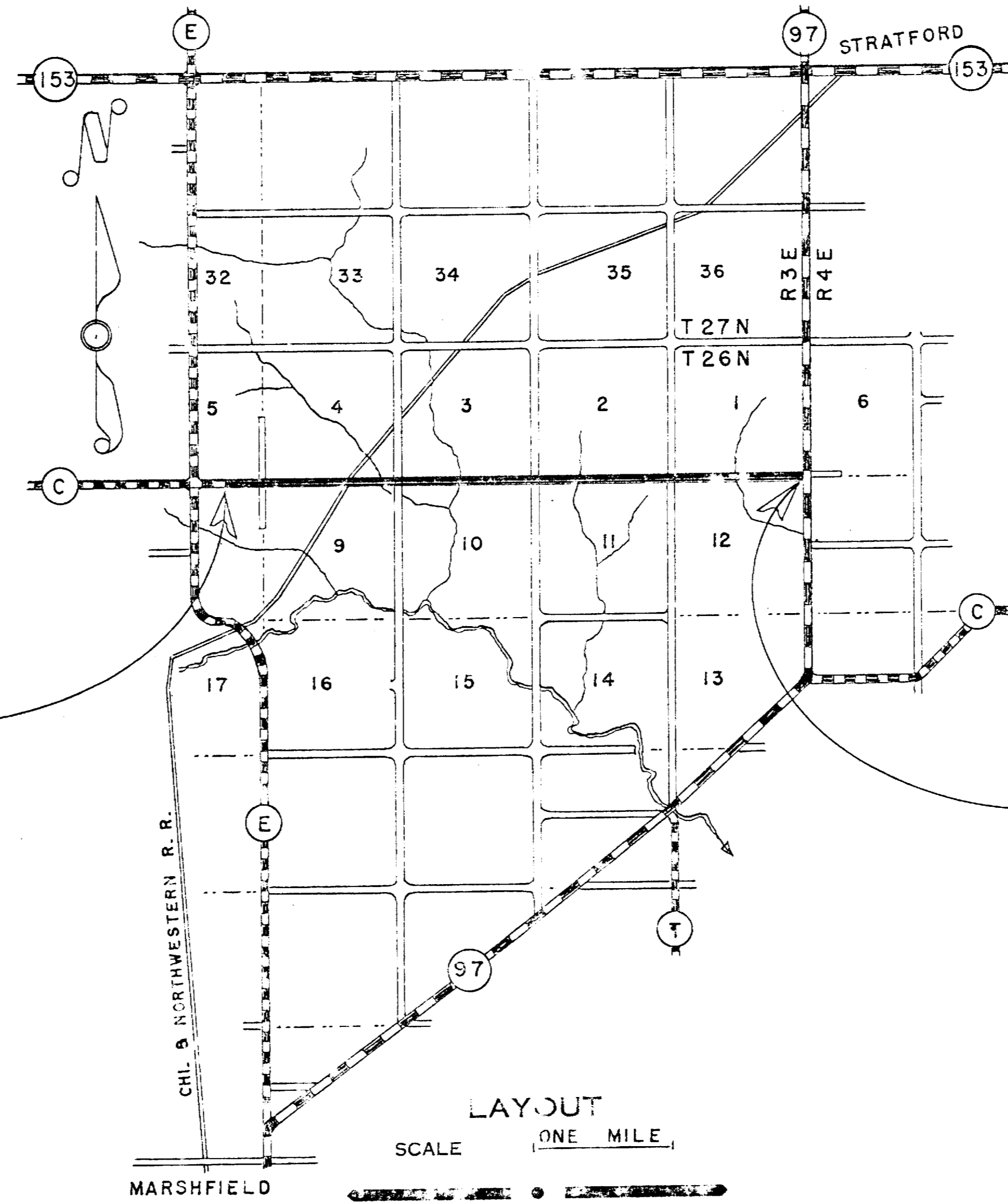


STATE OF WISCONSIN  
STATE HIGHWAY COMMISSION OF WISCONSIN

PLAN AND PROFILE OF PROPOSED

COUNTY AND HIGHWAY	ROUTE AND SECTION	C. ASS. AND AGREEMENT STATE FEDERAL	FEDERAL DIVISION OFFICE	SHEET NUMBER	TOTAL SHEETS
			WIS. 4		

SCALES  
 PLAN 1" = 80 FT.  
 PROFILE H.C.R. 1" = 20 FT. VERT. 1" = 0 FT.  
 CROSS SECTIONS H.C.R. 1" = 5 FT. VERT. 1" = 5 FT.



BEGINNING OF PROJECT  
STATION 9+00.0

END OF PROJECT  
STATION 235+86.6

CONVENTIONAL SIGNS

STATE LINE.....	CULVERTS IN PLACE.....
COUNTY LINE.....	CULVERTS REQUIRED.....
TOWNSHIP OR RANGE LINE.....	DROP INLET.....
SECTION LINE.....	POWER POLE.....
NEW RIGHT OF WAY LINE.....	TELEPHONE OR TELEGRAPH POLE.....
PRESENT RIGHT OF WAY LINE.....	RIGHT OF WAY MARKERS.....
WIRE FENCE { WOVEN.....	REFERENCE STAKE FOR HUBS ONLY.....
BARBED.....	MARSH.....
LOT LINE.....	HEDGE.....
CORPORATE OR CITY LIMITS.....	TREES.....
PROPERTY LINE.....	GROUND ELEVATION..... DATUM LINE 73.9
TRAVELED WAY OR P.E.....	GRADE ELEVATION..... DATUM LINE 75.16
RAILROADS.....	
BASE OR SURVEY LINE.....	

LAYOUT  
SCALE ONE MILE  
TOTAL NET LENGTH OF CENTERLINE - 4.297 MI.

STATE HIGHWAY COMMISSION OF WISCONSIN  
MADISON, WISCONSIN

SURVEYOR C. E. C. NOTE BOOK M-87  
 DISTRICT COMPUTER C. A. L. M. O. CHECKER  
 DISTRICT CHECKER CORRECT

CORRECT:  
 DATE \_\_\_\_\_ DISTRICT ENGINEER

RECOMMENDED FOR APPROVAL:  
 DATE \_\_\_\_\_ ENGINEER OF DESIGN

APPROVED:  
 DATE \_\_\_\_\_ STATE HIGHWAY ENGINEER

DEPARTMENT OF COMMERCE  
 BUREAU OF PUBLIC ROADS

APPROVED: \_\_\_\_\_ DISTRICT ENGINEER





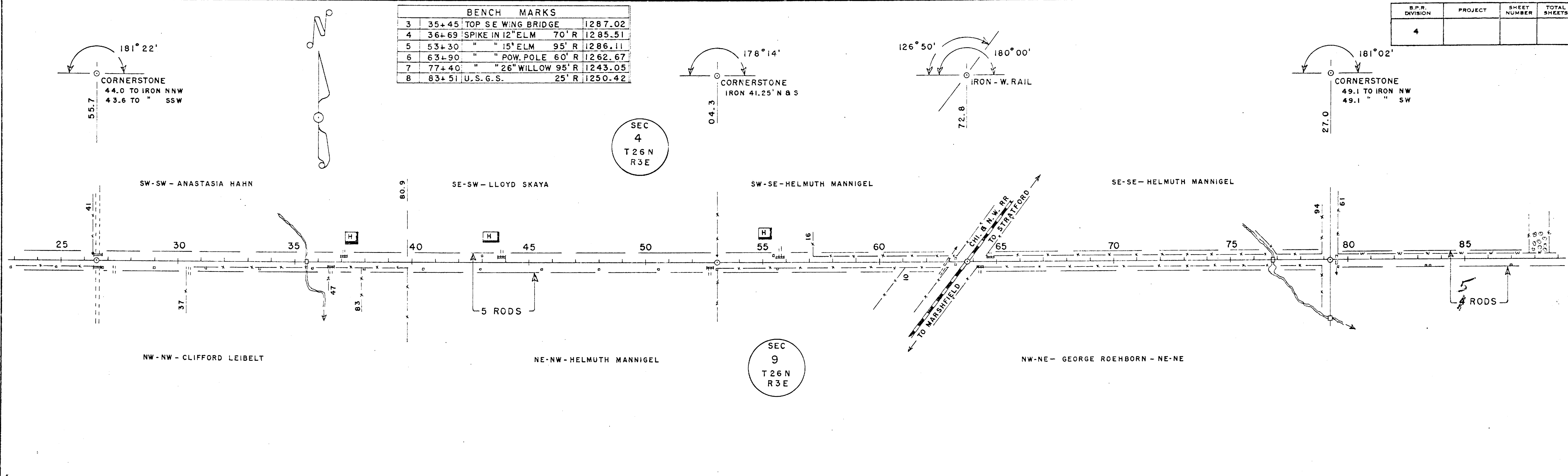
C.T.H. "C" - MC MILLAN

R.P.R. DIVISION	PROJECT	SHEET NUMBER	TOTAL SHEETS
4			

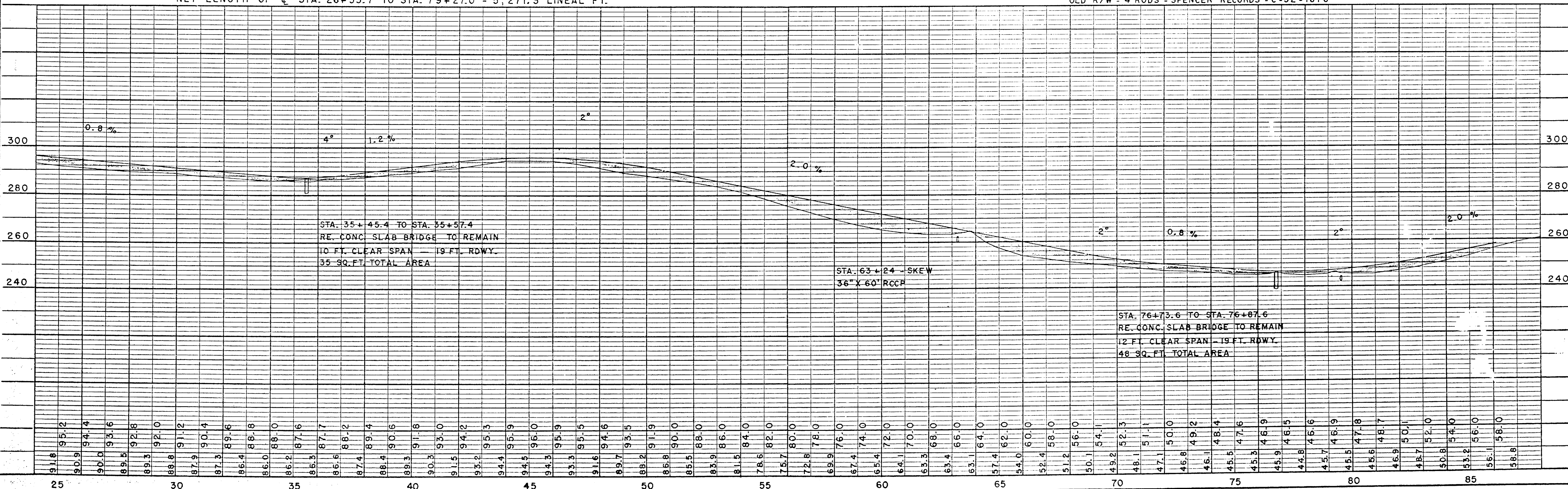
BENCH MARKS			
3	35+45	TOP SE WING BRIDGE	1287.02
4	36+69	SPIKE IN 12" ELM 70' R	1285.51
5	53+30	" " 15" ELM 95' R	1286.11
6	63+90	" " POW. POLE 60' R	1262.67
7	77+40	" " 26" WILLOW 95' R	1243.05
8	83+51	U.S.G.S. 25' R	1250.42

PLAN SURVEYED  
 PLOTTED  
 ALLOWANCE CHECKED  
 BY C.E.C.  
 DATE 10-57

PROFILE SURVEYED  
 PLOTTED  
 NOTE BOOK  
 BY C.E.C.  
 DATE 10-57



NET LENGTH OF C STA. 26+55.7 TO STA. 79+27.0 = 5,271.3 LINEAL FT. OLD R/W = 4 RODS - SPENCER RECORDS - C-32-1878



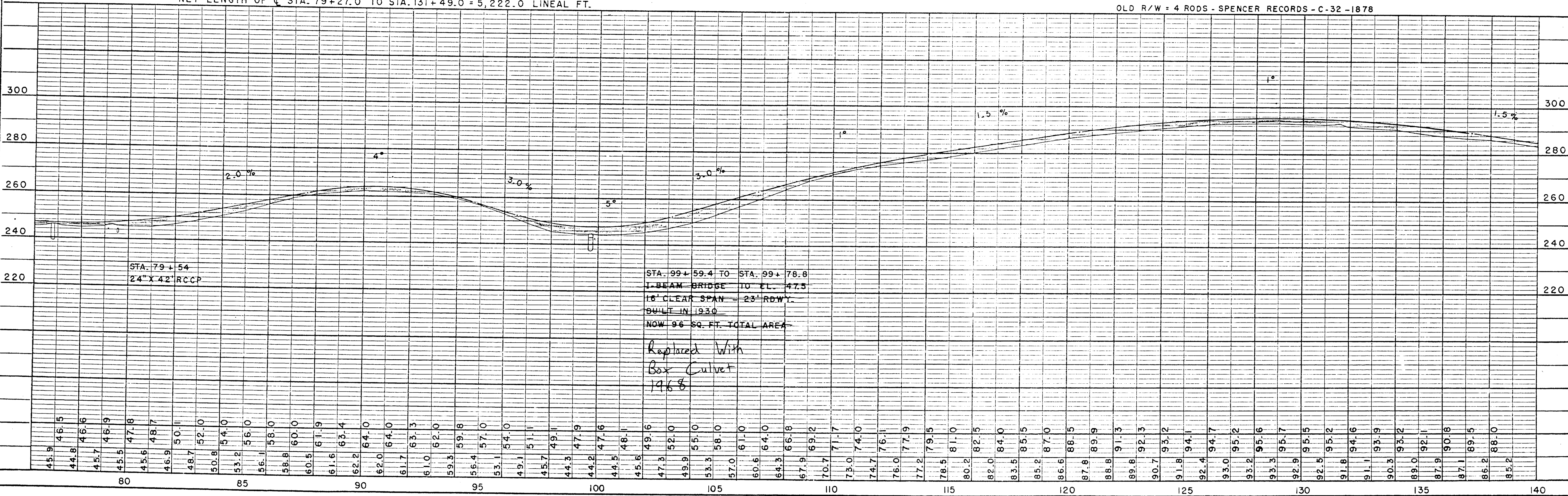
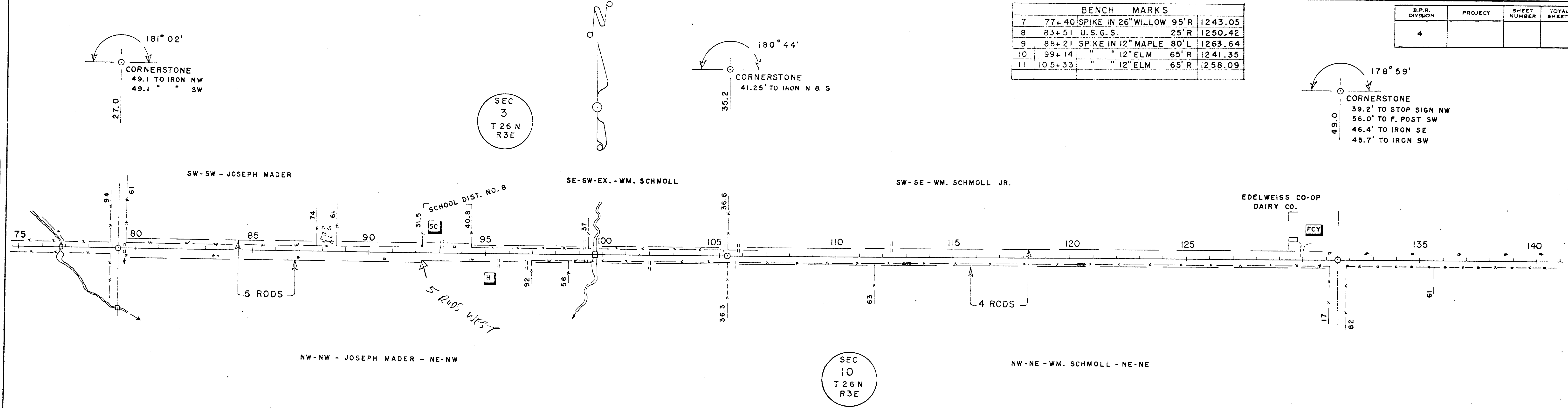


BENCH MARKS			
7	77+40	SPIKE IN 26" WILLOW 95'R	1243.05
8	83+51	U.S.G.S. 25'R	1250.42
9	88+21	SPIKE IN 12" MAPLE 80'L	1263.64
10	99+14	" 12" ELM 65'R	1241.35
11	105+33	" 12" ELM 65'R	1258.09

B.P.R. DIVISION	PROJECT	SHEET NUMBER	TOTAL SHEETS
4			

DATE 10-57  
 C.E.C.  
 SURVEYED  
 PLOTTED  
 CHECKED  
 RT. OF WAY CHECKED  
 PLAN  
 NOTE BOOK NO.

DATE 10-57  
 C.E.C.  
 SURVEYED  
 GRADES CHECKED  
 STRUCTURE NOTATIONS CHD.  
 PROFILE  
 NOTE BOOK NO.





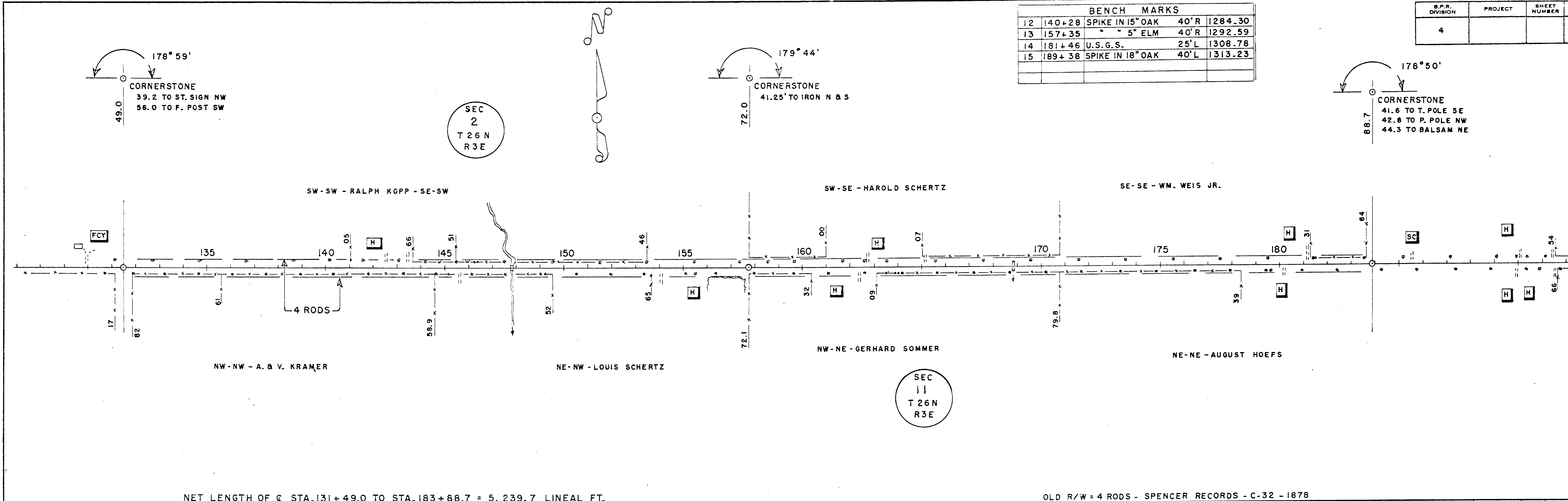
C.T.H. "C" - MC MILLAN

BENCH MARKS				
12	140+28	SPIKE IN 15" OAK	40'R	1284.30
13	157+35	" " 5" ELM	40'R	1292.59
14	181+46	U.S.G.S.	25'L	1308.78
15	189+38	SPIKE IN 18" OAK	40'L	1313.23

S.P.R. DIVISION	PROJECT	SHEET NUMBER	TOTAL SHEETS
4			

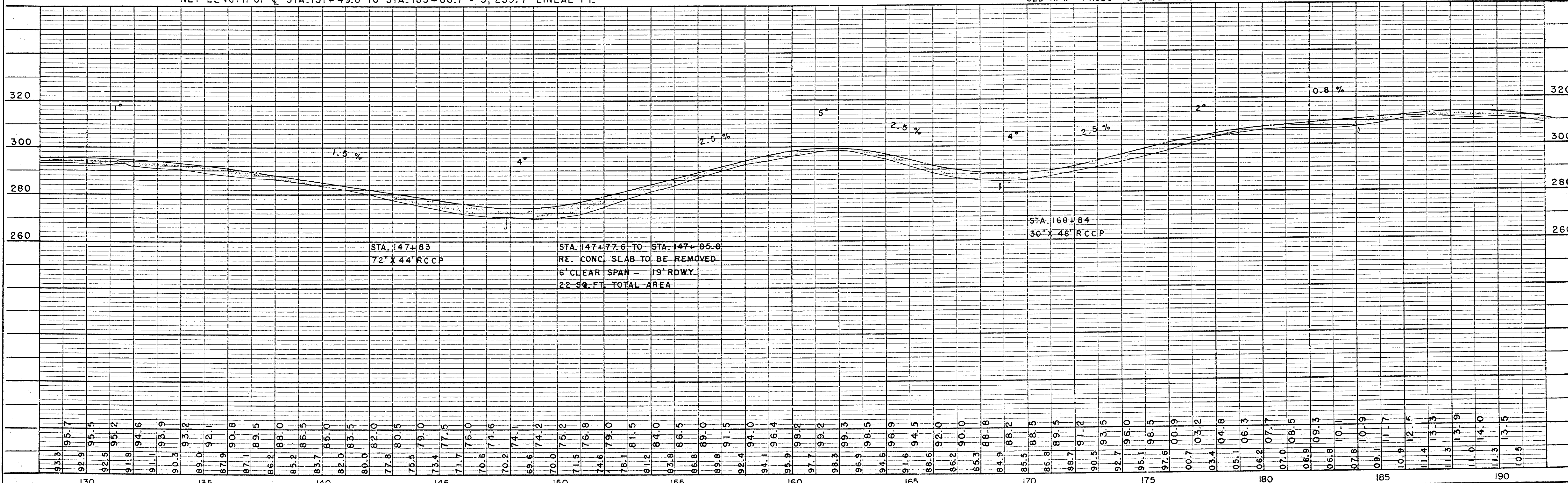
PLAN SURVEYED BY C.E.C. DATE 1-58  
 PRINTED BY C.E.C.  
 NOTE BOOK NO. 1-58  
 RT. OF WAY CHECKED

PROFILE SURVEYED BY C.E.C. DATE 1-58  
 PRINTED BY C.E.C.  
 NOTE BOOK NO. 1-58  
 STRUCTURE NOTATIONS CHKD.



NET LENGTH OF C. STA. 131+49.0 TO STA. 183+88.7 = 5,239.7 LINEAL FT.

OLD R/W = 4 RODS - SPENCER RECORDS - C-32 - 1878





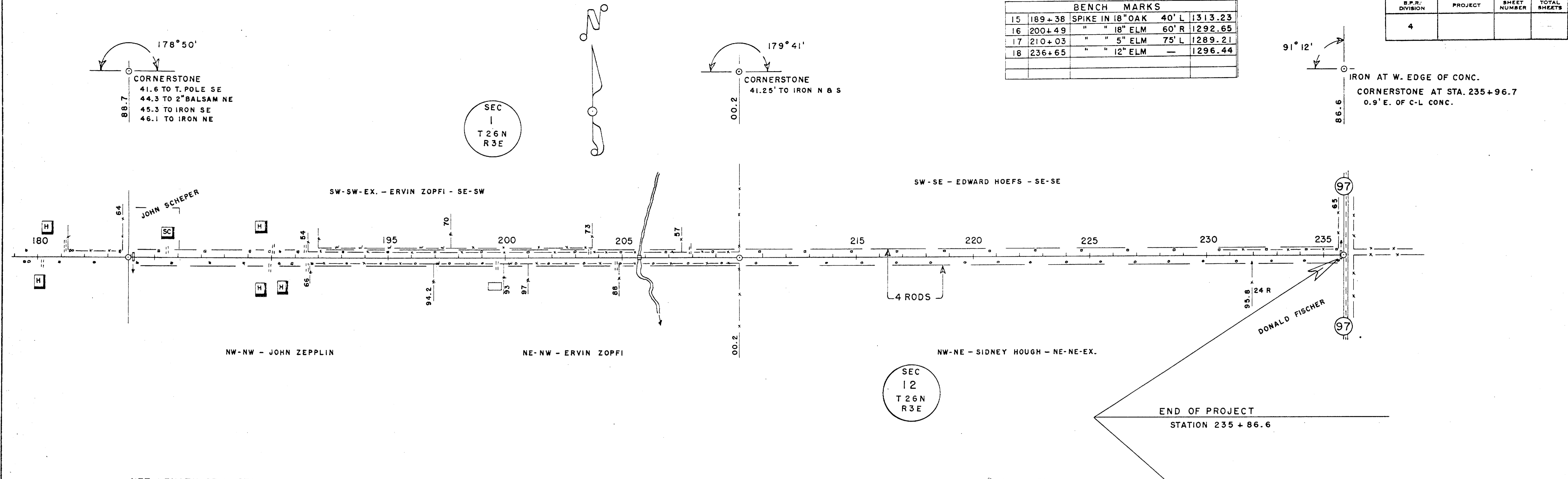
C.T.H. "C" - MC MILLAN

BENCH MARKS				
15	189+38	SPIKE IN 18" OAK	40' L	1313.23
16	200+49	" " 18" ELM	60' R	1292.65
17	210+03	" " 5" ELM	75' L	1289.21
18	236+65	" " 12" ELM	-	1296.44

B.P.R. DIVISION	PROJECT	SHEET NUMBER	TOTAL SHEETS
4			

DATE: 1-58  
 BY: C.E.C.  
 CHECKED: C.E.C.  
 SURVEYED: [ ]  
 ALIGNMENT CHECKED: [ ]  
 BT. OF WAY CHECKED: [ ]  
 PLAN NO. [ ]

DATE: 1-58  
 BY: C.E.C.  
 CHECKED: C.E.C.  
 GRADES CHECKED: [ ]  
 NOTES: [ ]  
 PROFILE NO. [ ]



NET LENGTH OF C STA. 183+88.7 TO STA. 235 + 86.6 = 5,197.9 LINEAL FT. OLD R/W = 4 RODS - SPENCER RECORDS C-32 - 1878

