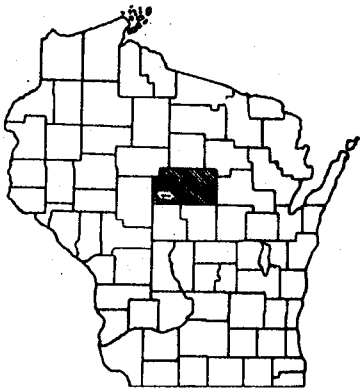


INDEX OF SHEETS

SHEET NO. 1	TITLE
SHEET NO. 1	TYPICAL CROSS SECTIONS
SHEET NO. 1	ESTIMATE OF QUANTITIES
SHEET NO. -	MISCELLANEOUS QUANTITIES
SHEET NO. -	RIGHT OF WAY PLAT
SHEET NO. 2-6	PLAN AND PROFILE STA. 9+00 TO STA. 235+86.6
SHEET NO. -	STANDARD DETAILS
SHEET NO. -	DRAINAGE STRUCTURES
SHEET NO. -	CROSS SECTIONS



STATE OF WISCONSIN
STATE HIGHWAY COMMISSION OF WISCONSIN

PLAN AND PROFILE OF PROPOSED
C.T.H. "E" - S.T.H. 97
MARATHON COUNTY
PROJECT S 1154 (4)

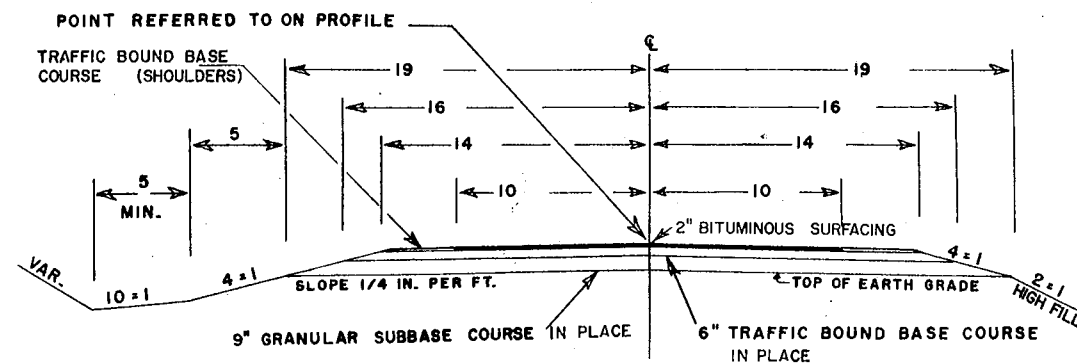
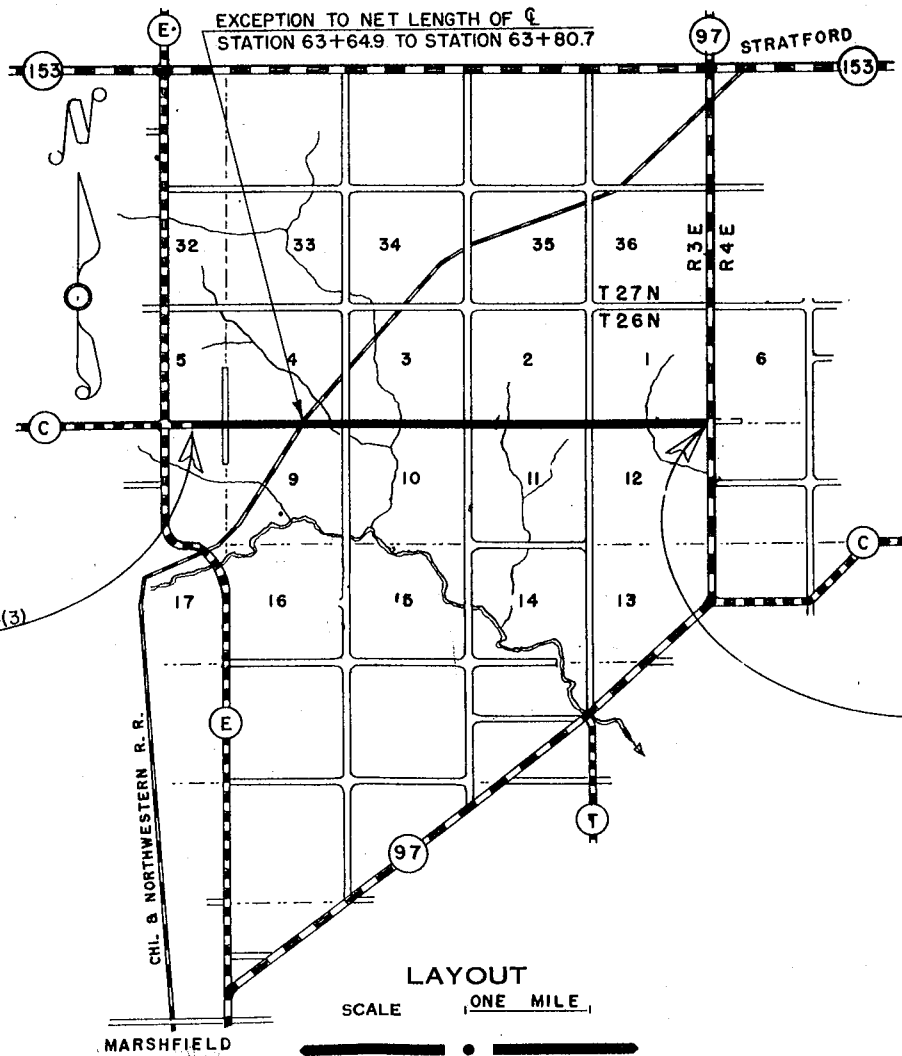
C.T.H. "C"

PLAN 1 IN. = 200 FT.
PROFILE HOR. 1 IN. = 200 FT. VERT. 1 IN. = 20 FT.

COUNTY AND HIGHWAY	ROUTE AND SECTION	CLASS AND AGREEMENT		FEDERAL DIVISION OFFICE	SHEET NUMBER	TOTAL SHEETS
		STATE	FEDERAL			
37.6	1154.0		11.4	WIS. 4	1	6

NOTE: PLAN AND PROFILE SHEETS ARE INCLUDED TO SHOW PROFILE AND ALIGNMENT ONLY, OTHER INFORMATION NOT PERTINENT TO THIS CONTRACT.

Bituminous Surface



BEGINNING OF PROJECT S 1154 (4) = BEG. PROJ. DS 1154(3)
STATION 9+00
± 900' E. OF S 1/4 COR. OF SEC. 5, T26N, R3E

END OF PROJECT S 1154 (4) = END PROJ. DS 1154(3)
STATION 235 + 86.6 S.E. COR. SEC. 1

CONVENTIONAL SIGNS

TYPE LINE	CULVERTS IN PLACE
COUNTY LINE	CULVERTS REQUIRED
SHIP OR RANGE LINE	DROP INLET
SECTION LINE	POWER POLE
RIGHT OF WAY LINE	TELEPHONE OR TELEGRAPH POLE
SENT RIGHT OF WAY LINE	RIGHT OF WAY MARKERS
FENCE {WOVEN}	REFERENCE STAKE FOR HUBS ONLY
FENCE {BARBED}	MARSH
LINE	HEDGE
PORTAGE OR CITY LIMITS	TREES
PROPERTY LINE	GROUND ELEVATION
VEELED WAY OR P.E.	GRADE ELEVATION
ROADS	
OR SURVEY LINE	

LAYOUT

SCALE ONE MILE

TOTAL NET LENGTH OF CENTERLINE = 4.294 MI.

NET LENGTH OF CENTERLINE = 22,670.8 LIN. FT.

ESTIMATE OF QUANTITIES

ITEM NO.	UNIT	ITEM	QUANTITY
2204-1	CU. YD.	TRAFFIC BOUND BASE COURSE	1260
2310-1	STA.	PREPARATION OF ROADBED FOR BITUMINOUS SURFACE	227
2313-1	SQ. YD.	BITUMINOUS ROAD MIX SURFACE	50,380
2313-2	CU. YD.	AGGREGATES FOR BITUMINOUS ROAD MIX SURFACE	3500
2313-3	GAL.	BITUMINOUS MATERIAL FOR SURFACE COURSE	78,750

NOTE: THIS PROJECT IS TO BE EXECUTED UNDER THE STANDARD SPECIFICATIONS FOR ROAD AND BRIDGE CONSTRUCTION OF THE STATE HIGHWAY COMMISSION OF WISCONSIN-- EDITION OF 1957, APPROVE AUGUST 3, 1957, AND SPECIAL PROVISIONS AS ATTACHED TO PROPOSALS.

STATE HIGHWAY COMMISSION OF WISCONSIN
MADISON, WISCONSIN

SURVEYOR: C.E.C. NOTE BOOK M-87
DISTRICT COMPUTER: C.A.L. M.O. CHECKER
DISTRICT CHECKER: F.C.L. CORRECT

CORRECT:
DATE: 5/8/59 [Signature] DISTRICT ENGINEER

RECOMMENDED FOR APPROVAL:
DATE: 5/14/59 [Signature] ENGINEER OF DESIGN

APPROVED:
DATE: 5/19/59 [Signature] STATE HIGHWAY ENGINEER

DEPARTMENT OF COMMERCE
BUREAU OF PUBLIC ROADS

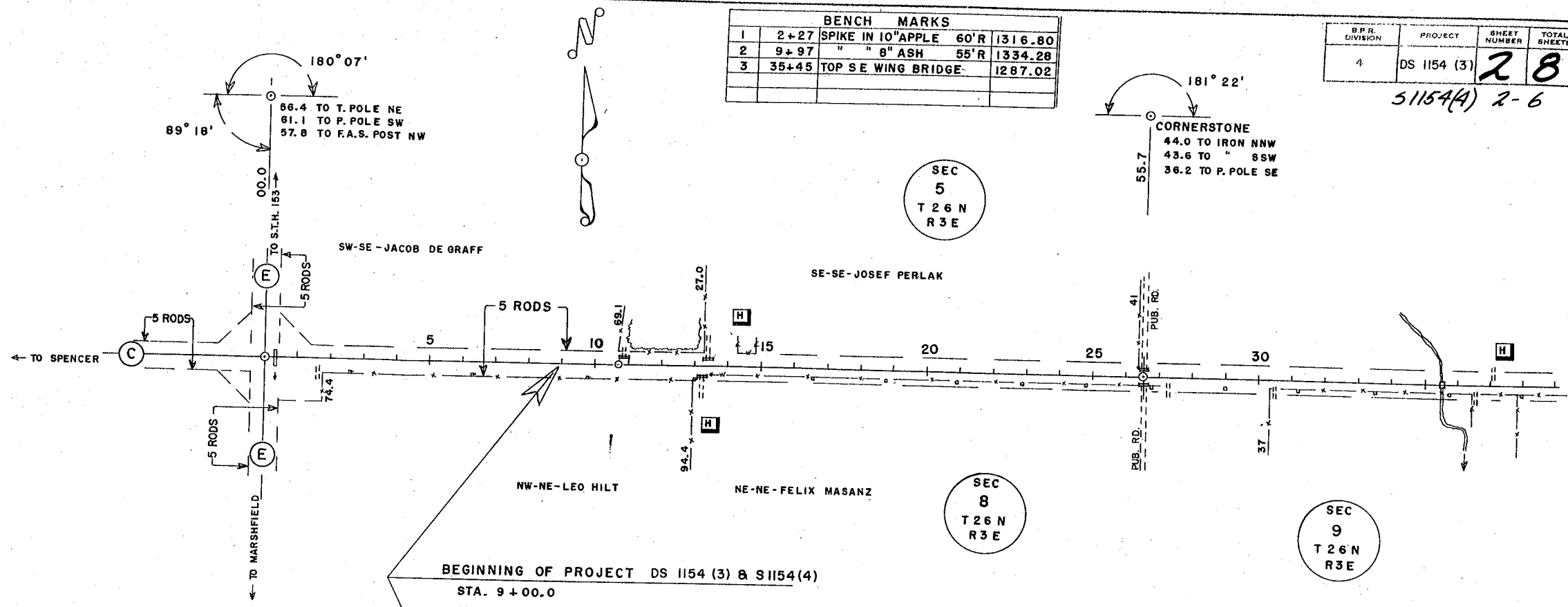
APPROVED: [Signature] DATE []
DIVISION ENGINEER

5 1154 (4)

BENCH MARKS			
1	2+27	SPIKE IN 10" APPLE 60'R	1316.80
2	9+97	" " 8" ASH 55'R	1334.28
3	35+45	TOP SE WING BRIDGE	1287.02

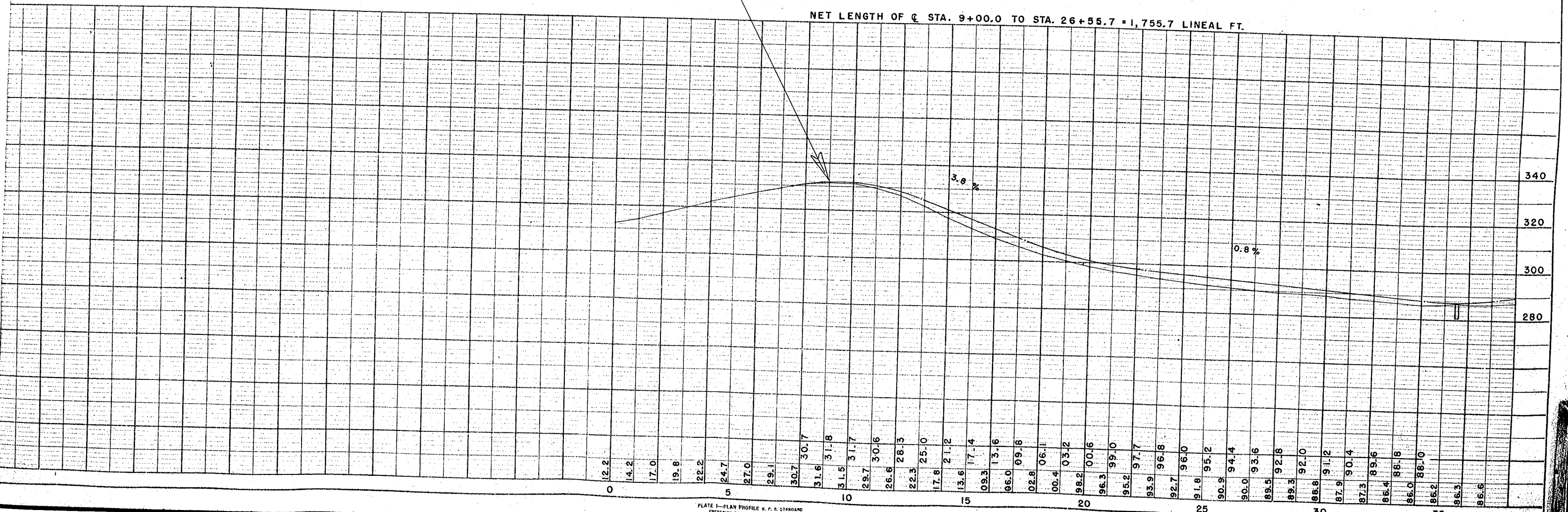
B.P.R. DIVISION	PROJECT	SHEET NUMBER	TOTAL SHEETS
4	DS 1154 (3)	28	28

51154(A) 2-6



BEGINNING OF PROJECT DS 1154 (3) & S1154(4)
STA. 9+00.0

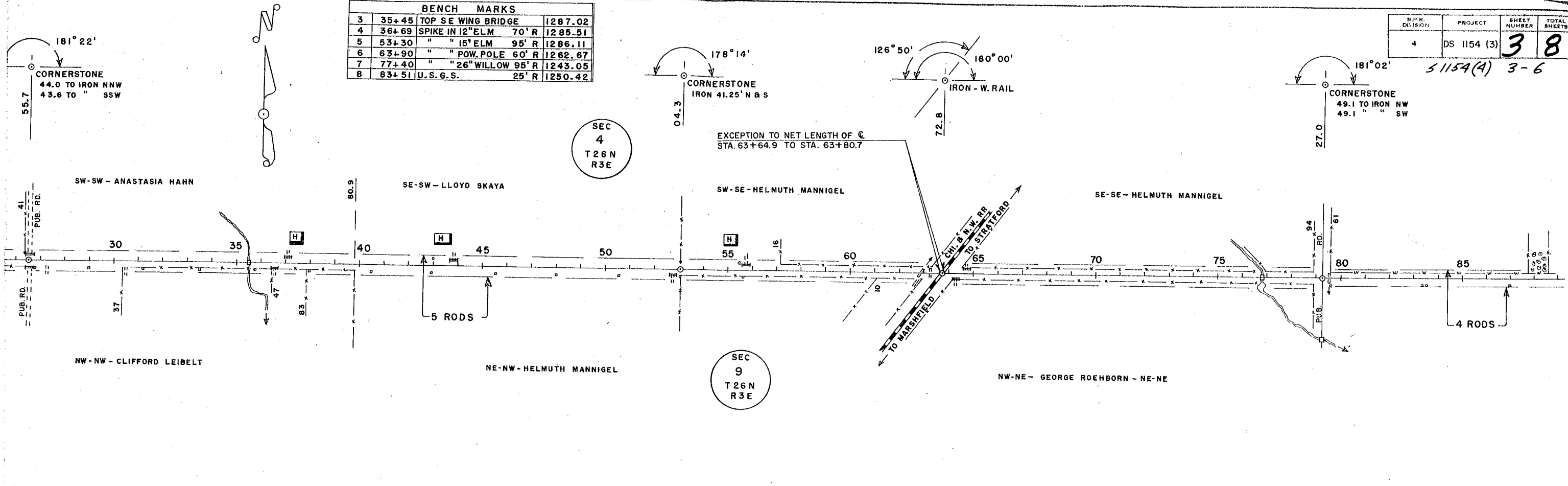
NET LENGTH OF @ STA. 9+00.0 TO STA. 26+55.7 = 1,755.7 LINEAL FT.



BENCH MARKS			
3	35+45	TOP SE WING BRIDGE	1287.02
4	36+69	SPIKE IN 12" ELM 70' R	1285.51
5	53+30	" " 15" ELM 95' R	1286.11
6	63+90	" " POW. POLE 60' R	1262.67
7	77+40	" " 26" WILLOW 95' R	1243.05
8	83+51	U.S.G.S. 25' R	1250.42

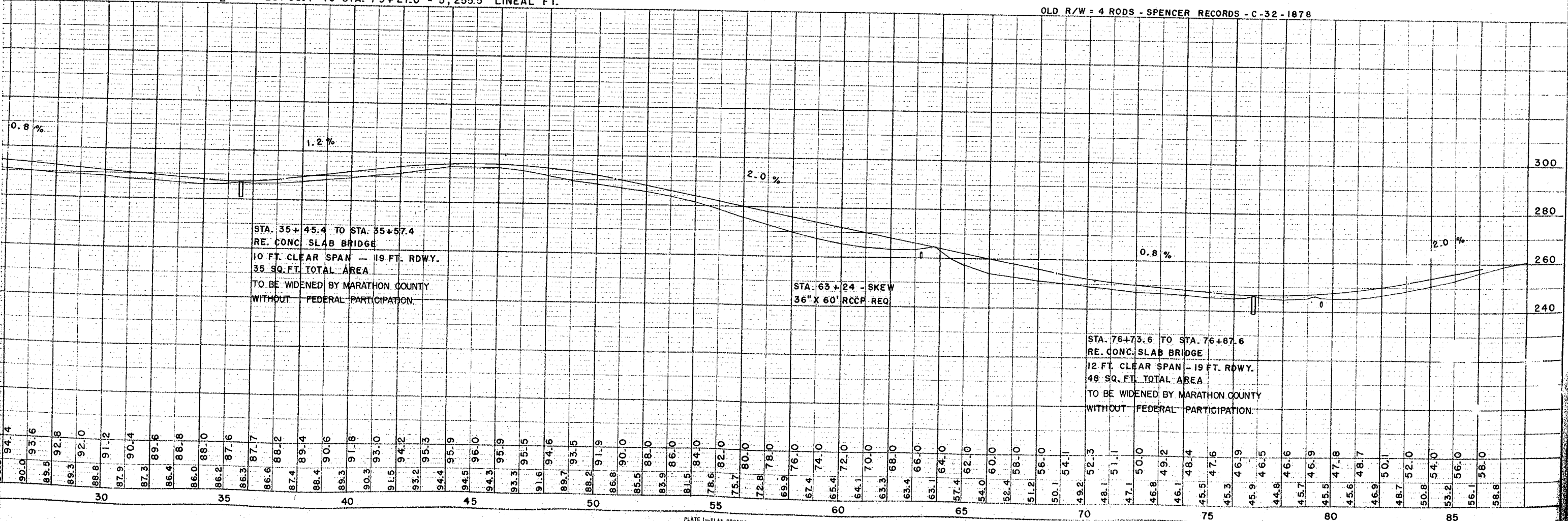
B.P.R. DIVISION	PROJECT	SHEET NUMBER	TOTAL SHEETS
4	DS 1154 (3)	3	8

51154(A) 3-6



NET LENGTH OF C STA. 26+55.7 TO STA. 79+27.0 = 5,255.5 LINEAL FT.

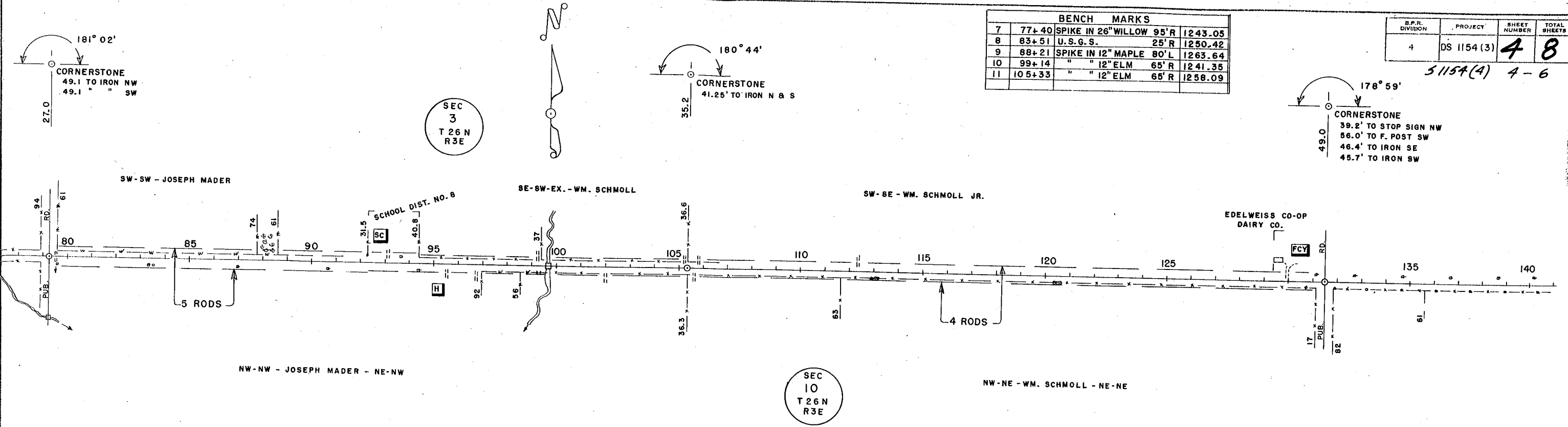
OLD R/W = 4 RODS - SPENCER RECORDS - C-32-1878



STA. 35+45.4 TO STA. 35+57.4
 RE. CONC. SLAB BRIDGE
 10 FT. CLEAR SPAN - 19 FT. RDWY.
 35 SQ. FT. TOTAL AREA
 TO BE WIDENED BY MARATHON COUNTY
 WITHOUT FEDERAL PARTICIPATION.

STA. 63+24 - SKEW
 36" X 60" RCCP REQ

STA. 76+73.6 TO STA. 76+87.6
 RE. CONC. SLAB BRIDGE
 12 FT. CLEAR SPAN - 19 FT. RDWY.
 48 SQ. FT. TOTAL AREA
 TO BE WIDENED BY MARATHON COUNTY
 WITHOUT FEDERAL PARTICIPATION.



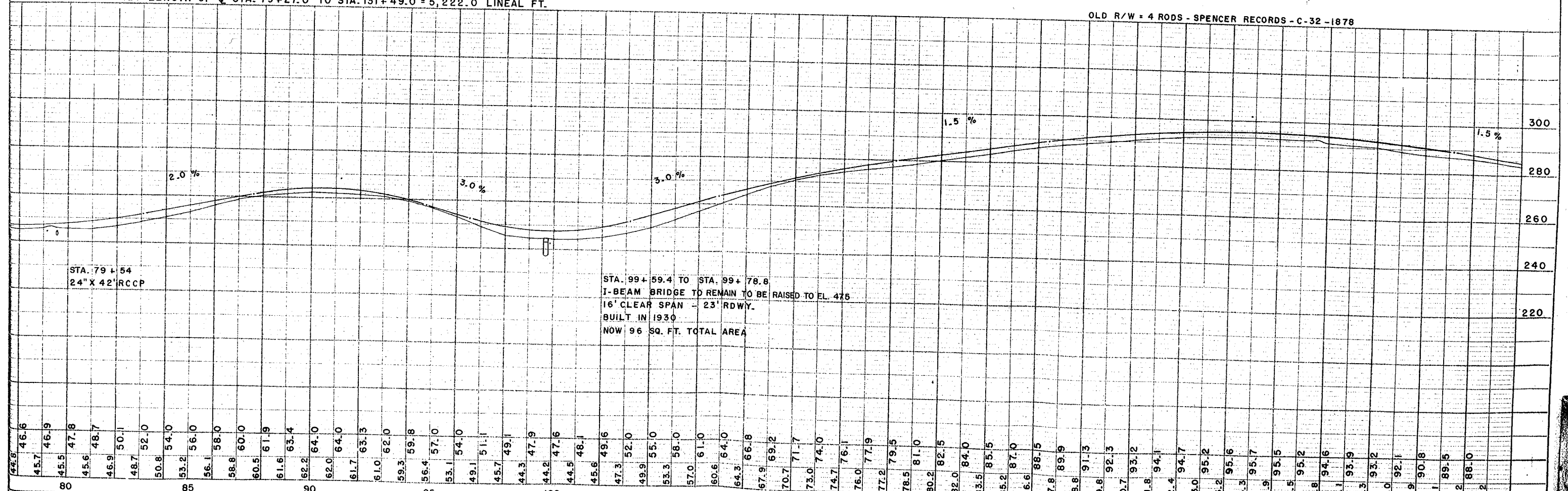
BENCH MARKS			
7	77+40	SPIKE IN 26" WILLOW 95' R	1243.05
8	83+51	U.S.G.S. 25' R	1250.42
9	88+21	SPIKE IN 12" MAPLE 80' L	1263.64
10	99+14	" " 12" ELM 65' R	1241.35
11	105+33	" " 12" ELM 65' R	1258.09

B.P.R. DIVISION	PROJECT	SHEET NUMBER	TOTAL SHEETS
4	DS 1154 (3)	48	48

51154(4) 4-6

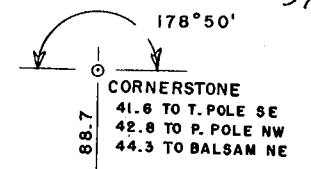
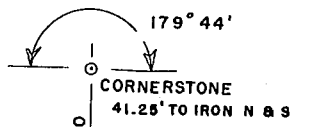
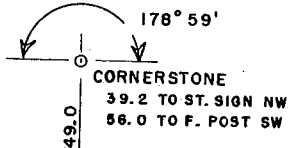
NET LENGTH OF C STA. 79+27.0 TO STA. 131+49.0 = 5,222.0 LINEAL FT.

OLD R/W = 4 RODS - SPENCER RECORDS - C-32-1878



STA. 79+54
24" X 42" RCCP

STA. 99+59.4 TO STA. 99+78.8
I-BEAM BRIDGE TO REMAIN TO BE RAISED TO EL. 475
16' CLEAR SPAN - 23' RDWY.
BUILT IN 1930
NOW 96 SQ. FT. TOTAL AREA



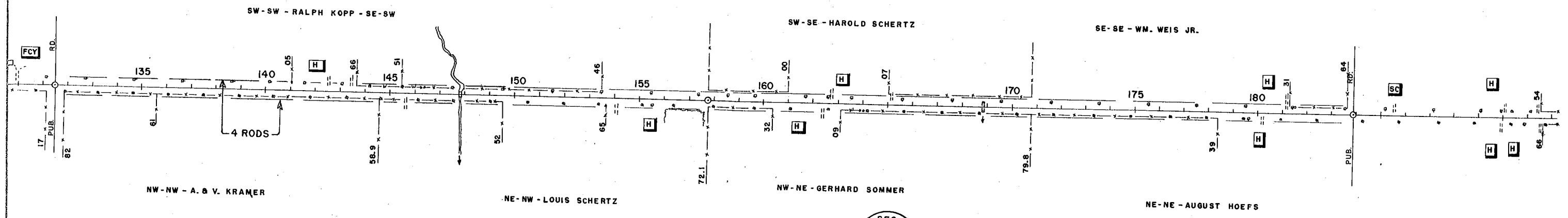
BENCH MARKS				
12	140+28	SPIKE IN 15" OAK	40'R	1284.30
13	157+35	" " 5" ELM	40'R	1292.59
14	181+46	U.S.G.S.	25'L	1308.78
15	189+38	SPIKE IN 18" OAK	40'L	1313.23

B.P.M. DIVISION	PROJECT	SHEET NUMBER	TOTAL SHEETS
4	DS 1154 (3)	5	8

51154(A) 5-6

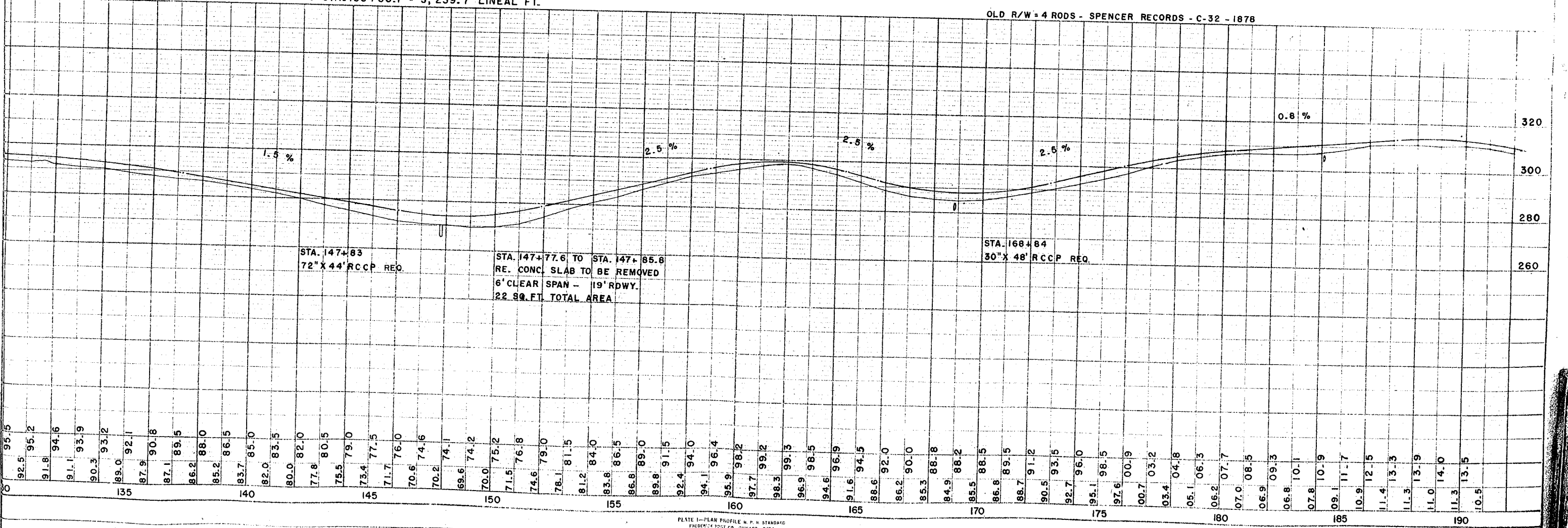
SEC 2
T 26 N
R 3 E

SEC 11
T 26 N
R 3 E



NET LENGTH OF C STA. 131+49.0 TO STA. 183+88.7 = 5,239.7 LINEAL FT.

OLD R/W = 4 RODS - SPENCER RECORDS - C-32 - 1878



178° 50'
CORNERSTONE
41.6 TO T. POLE SE
44.3 TO 2" BALSAM NE
45.3 TO IRON SE
46.1 TO IRON NE

SEC
1
T 26N
R 3E

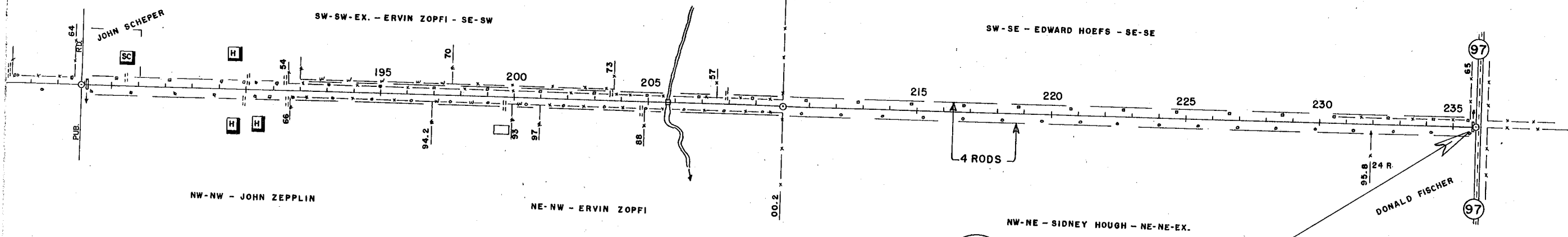
179° 41'
CORNERSTONE
41.25' TO IRON N & S

BENCH MARKS			
15	189+38	SPIKE IN 18" OAK	40' L 1313.23
16	200+49	" " 18" ELM	60' R 1292.65
17	210+03	" " 5" ELM	75' L 1289.21
18	236+65	" " 12" ELM	— 1296.44

B.P.N. DIVISION	PROJECT	SHEET NUMBER	TOTAL SHEETS
4	DS 1154 (3)	6	8

51154(4) 6-6

91° 12'
IRON AT W. EDGE OF CONC.
CORNERSTONE AT STA. 235+96.7
0.9' E. OF C-L CONC.



NET LENGTH OF C STA. 183+88.7 TO STA. 235+86.6 = 5,197.9 LINEAL FT.

OLD R/W = 4 RODS - SPENCER RECORDS C-32 - 1878

