

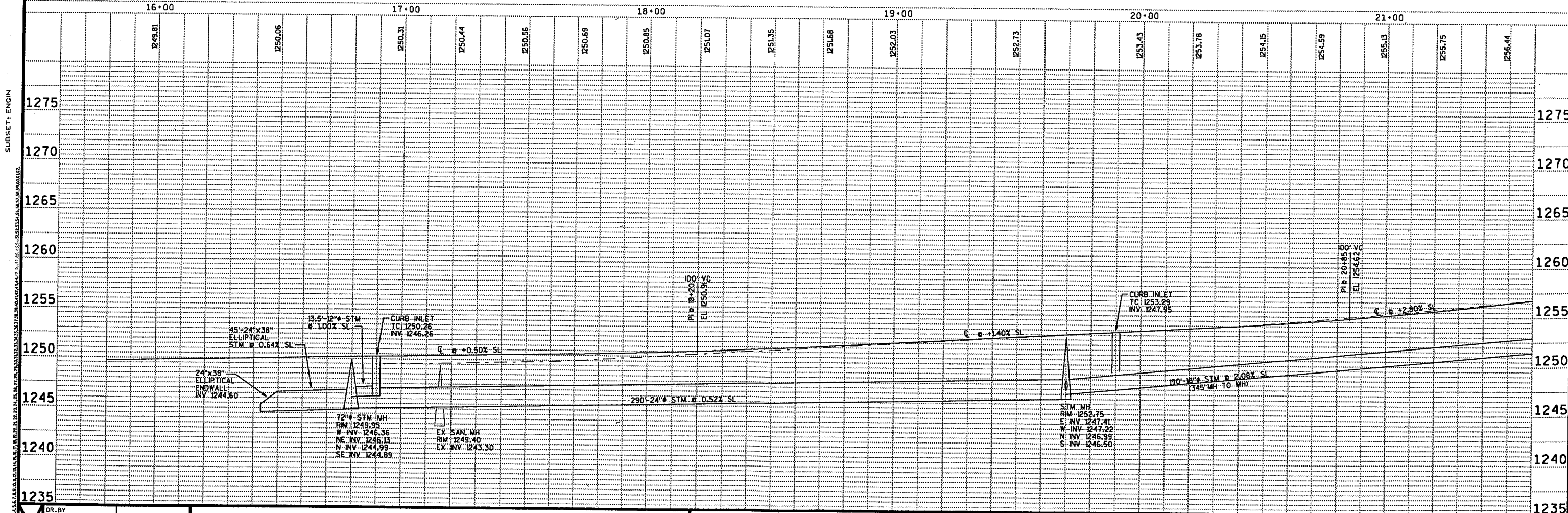
REN TABLE = \plot72\user\hndrf.tbi
DGN FILE = 01/07/00
DESIGNER = JF
DGN LEVELS ON = 1-62

OSIZENT2.dgn
ON = 1-63

22x34pdf.dgn
ON = 1-63

22x34pdf.dgn
ON = 1-63

MATCH LINE @ 21+60
REFERENCE SHEET NO. 3



STREET & UTILITY IMPROVEMENTS - 1999
CITY OF MARSHFIELD, WISCONSIN

PLANS PREPARED BY
AVRES ASSOCIATES
Engineers/Architects
Scientists/Surveyors
Dwan Ayres & Associates Inc.
Eau Claire, Wisconsin

CTH E

SHEET NO.

2

DRAWING REDUCED TO ONE-HALF ORIGINAL SCALE

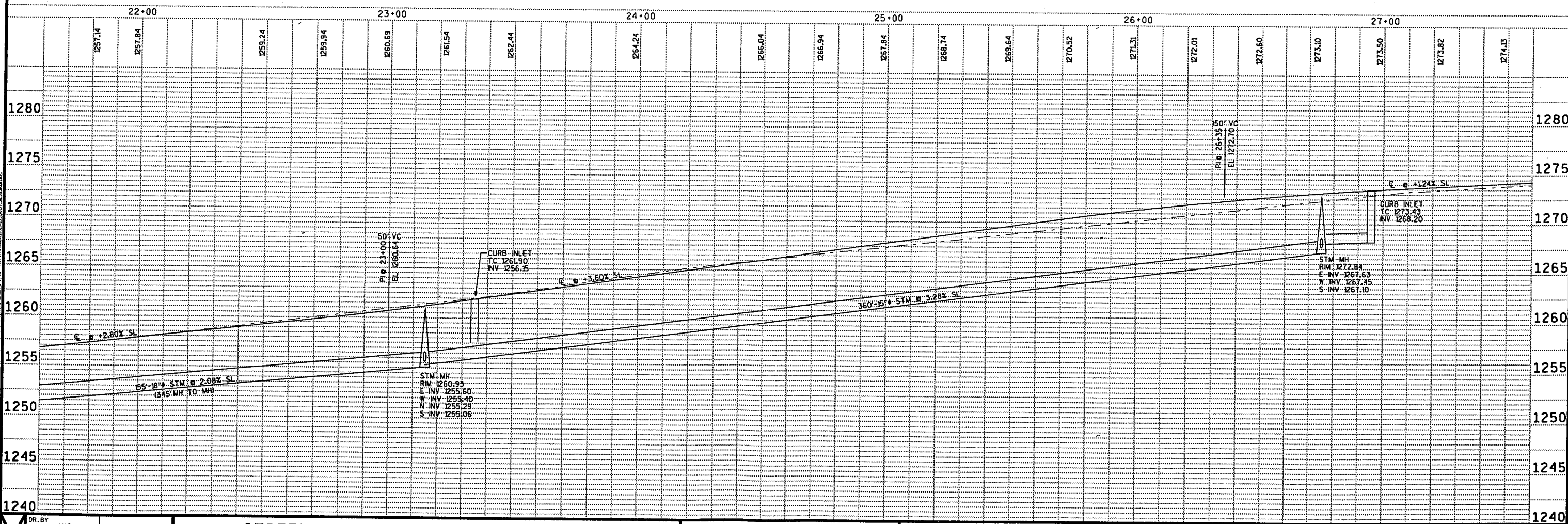
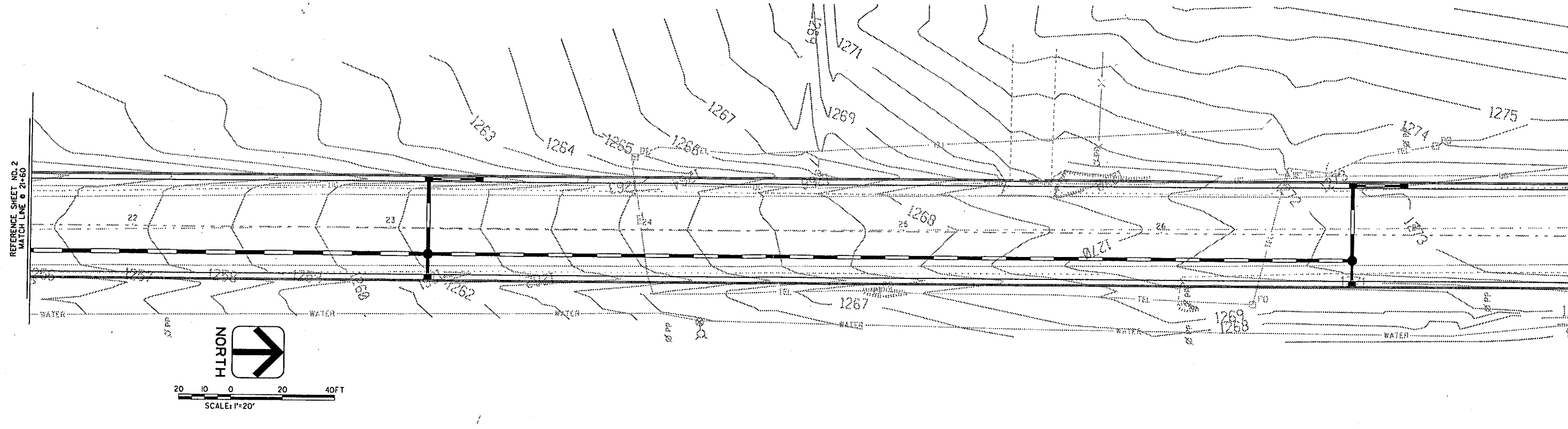
PEN TABLE = \p10472\user\mhairf.tbl
 DATE OF PLOT = 01/07/00
 DESIGN FILE IS J:\mhairf\mhairf\0637est3.dgn
 DGN LEVELS ON = 1-62

0637est2.dgn ON = 1-63
 0637estn.dgn ON = 1-63
 22x34dfr.dgn ON = 1-63
 0637epi.dgn ON = 1-63

22x34dfr.dgn ON = 1-63
 0637epi.dgn ON = 1-63

REFERENCE SHEET NO. 2
 MATCH LINE @ 21+60

MATCH LINE @ 27+60
 REFERENCE SHEET NO. 4



DR. BY	MAG	LS 221
CHK. BY	R RISLER	JOB NO. 23 0537
DATE	JAN. 00	SCALE V 1"=5' H 1"=20'

STREET & UTILITY IMPROVEMENTS - 1999
 CITY OF MARSHFIELD, WISCONSIN

PLANS PREPARED BY
AVRES ASSOCIATES
 Engineers/Architects
 Scientists/Surveyors
 Over Avres & Associates Inc.
 Eau Claire, Wisconsin

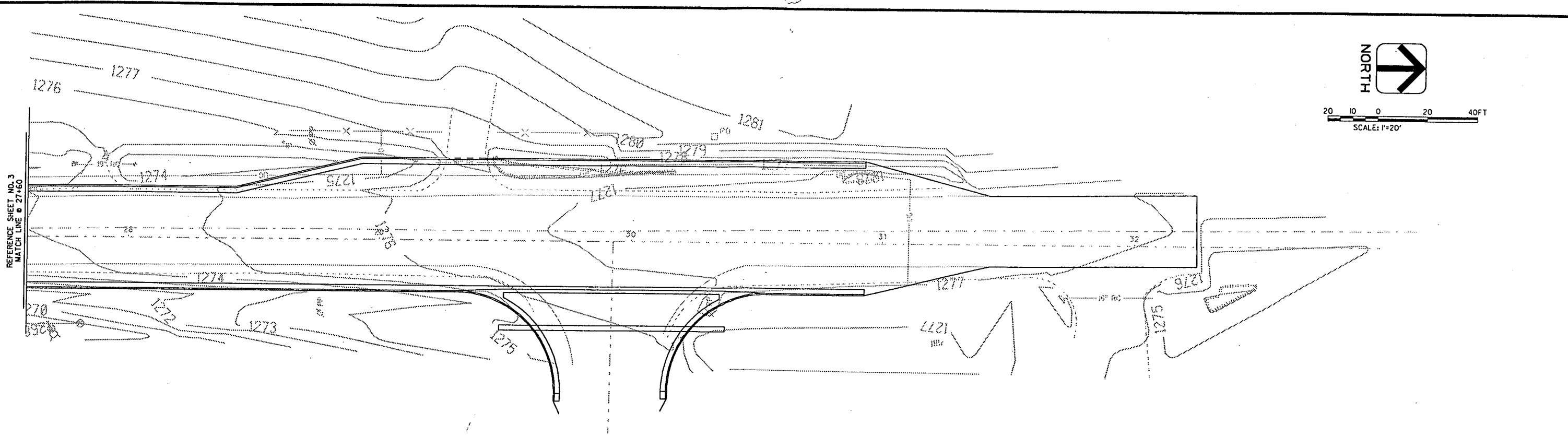
CTH E

SHEET NO.
3

DRAWING REDUCED TO ONE-HALF ORIGINAL SCALE



20 10 0 20 40FT
SCALE: 1"=20'



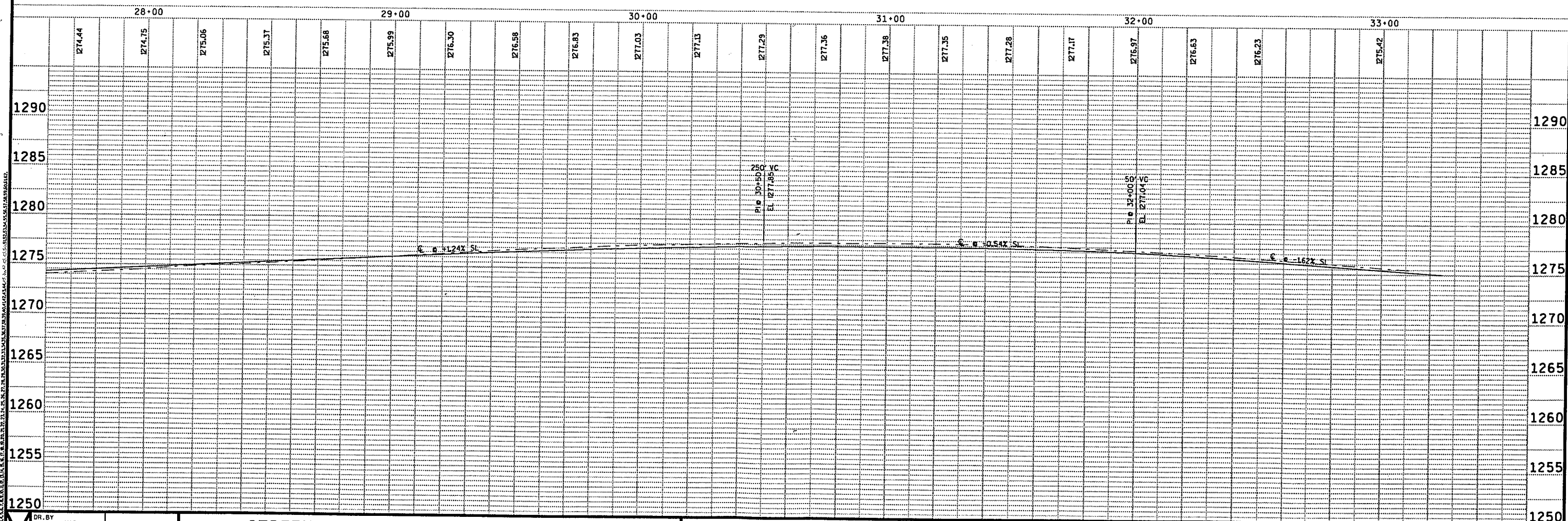
PEN TABLE = \plot72\user\mhairf.tbl
DATE OF PLOT = 01/07/00
DESIGN FILE IS J:\mhairf\da\mhairf\0637est+4.dgn
DGN LEVELS ON = 1-62

052ent2.dgn
ON = 1-63

22x34ppf.dgn
ON = 1-63

0637epf.dgn
ON = 1-63

SUBSET: ENGIN



DR. BY	MAG	LS 221
CHK. BY	R RISLER	JOB NO. 23 0637
DATE	JAN. 00	SCALE V 1"=5' H 1"=20'

STREET & UTILITY IMPROVEMENTS - 1999 CITY OF MARSHFIELD, WISCONSIN

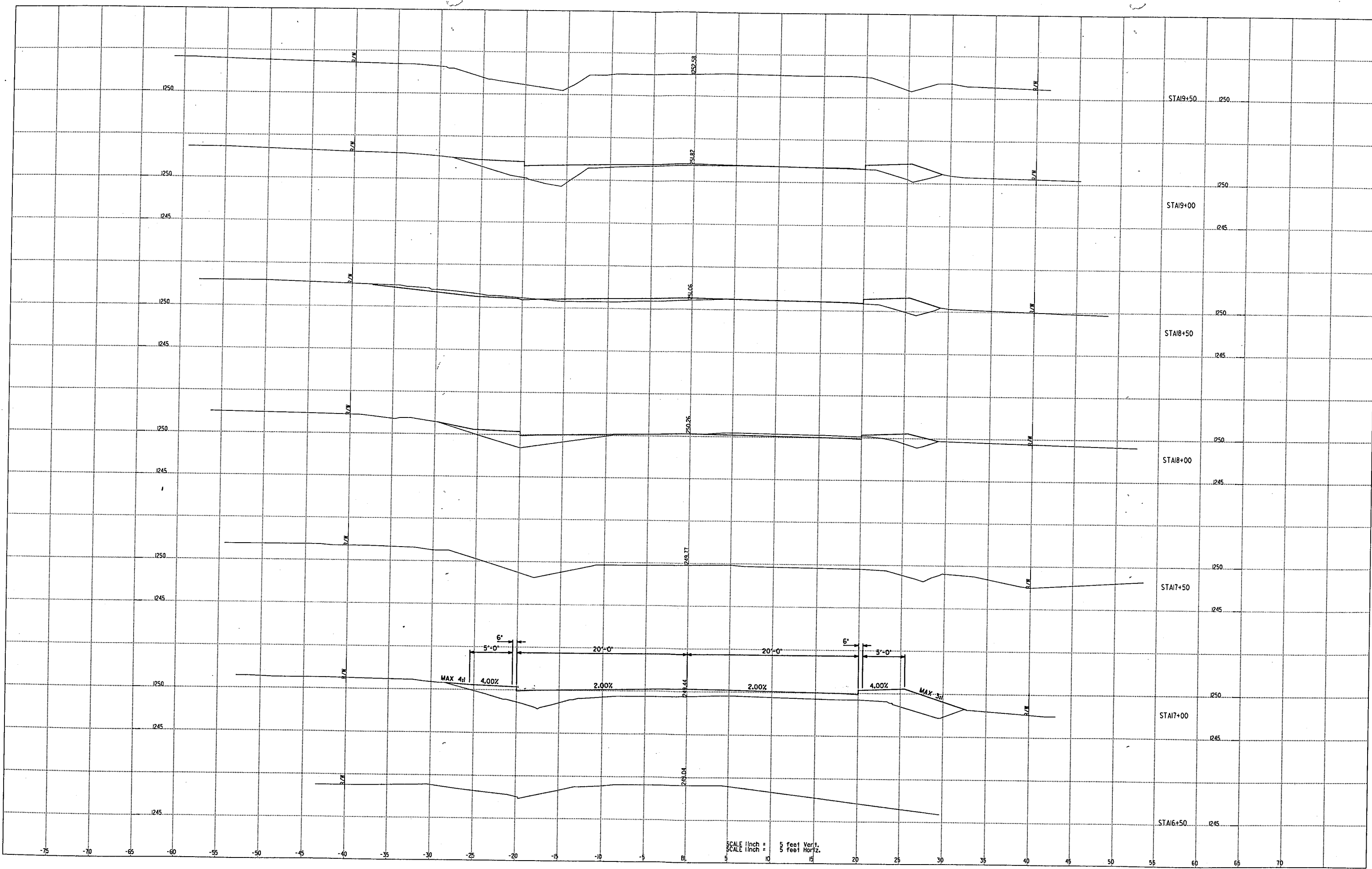
PLANS PREPARED BY
AYRES ASSOCIATES
Engineers/Architects
Scientists/Surveyors
Dwain Ayres & Associates Inc.
Eau Claire, Wisconsin

CTH E

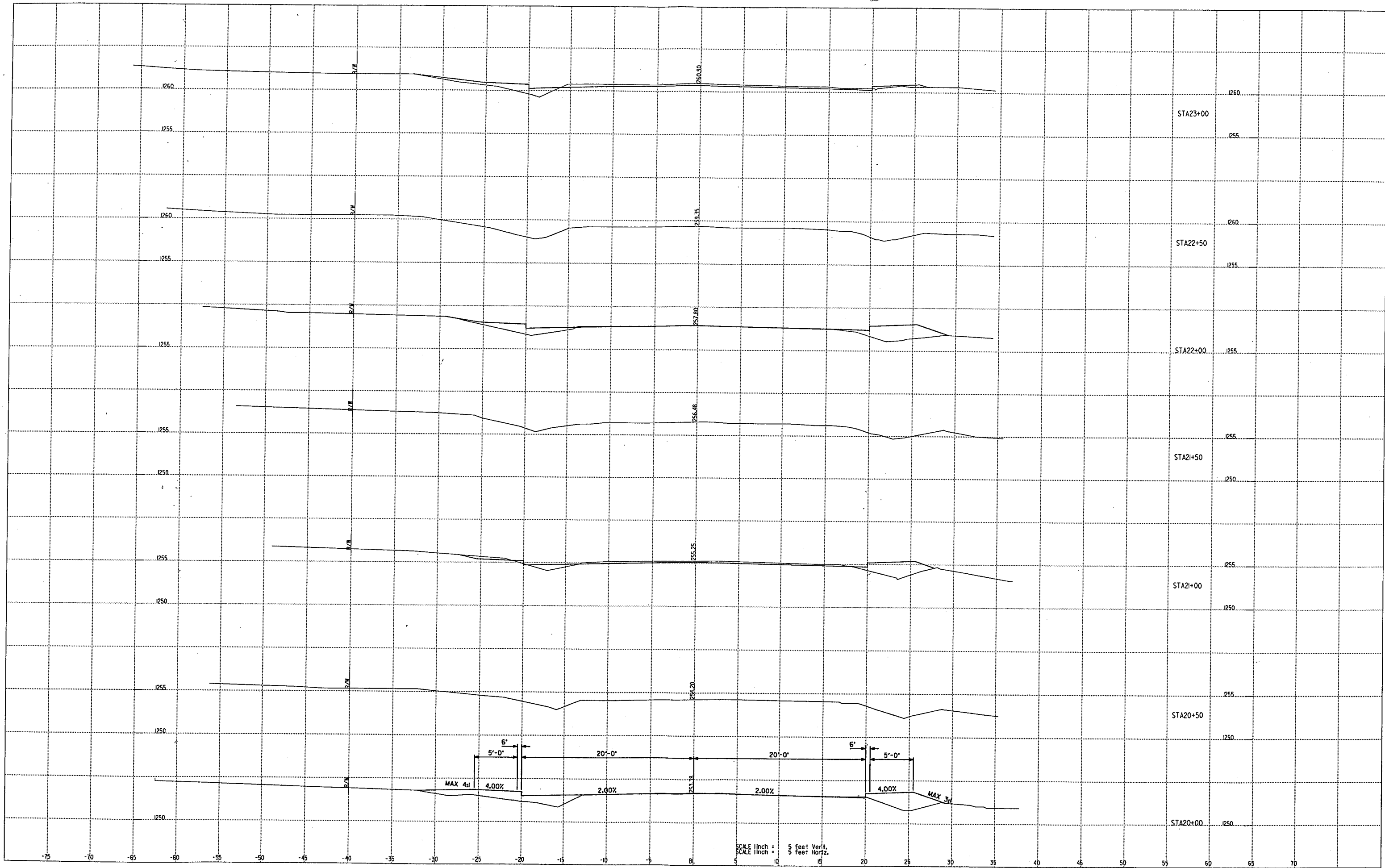
SHEET NO.

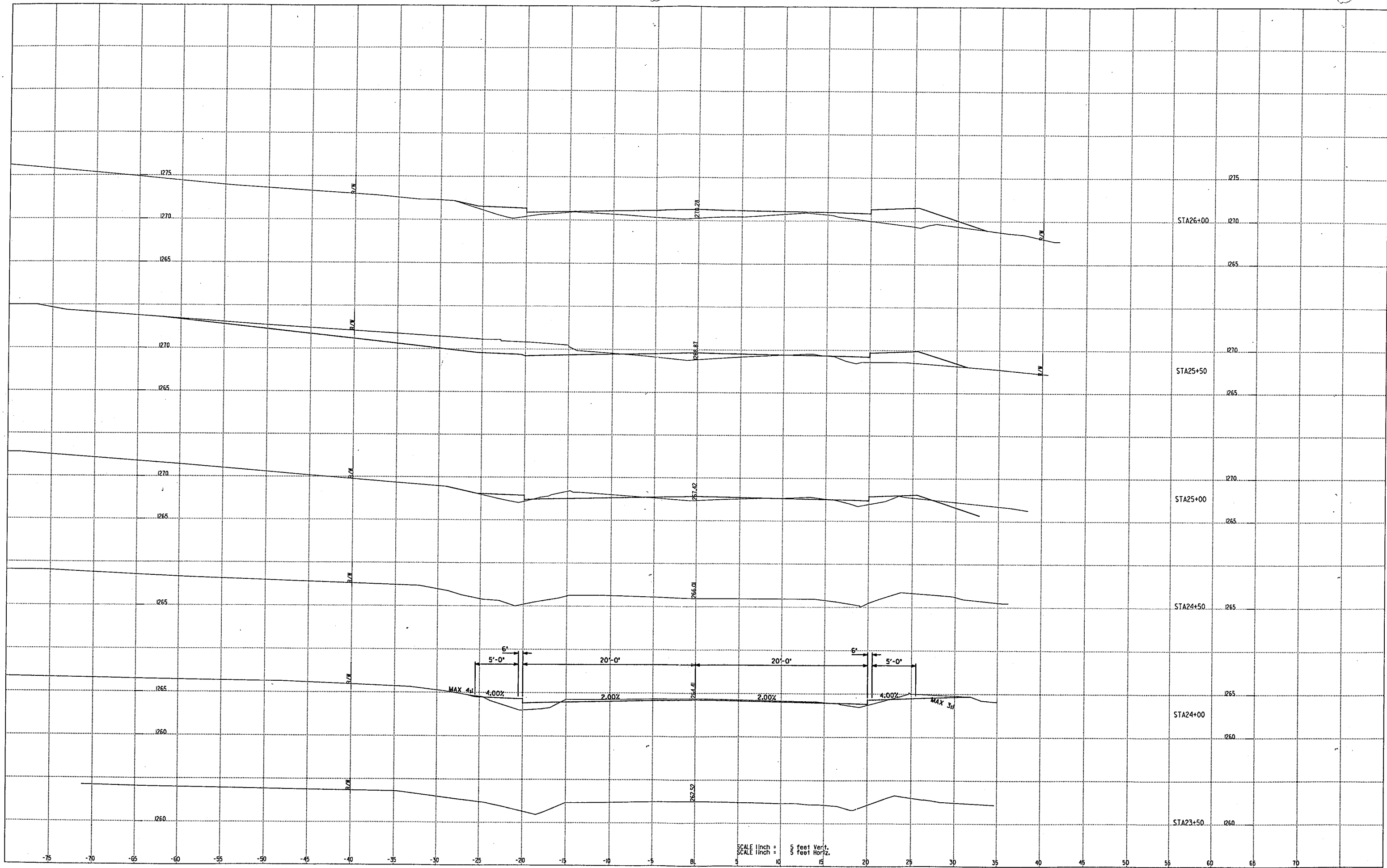
3

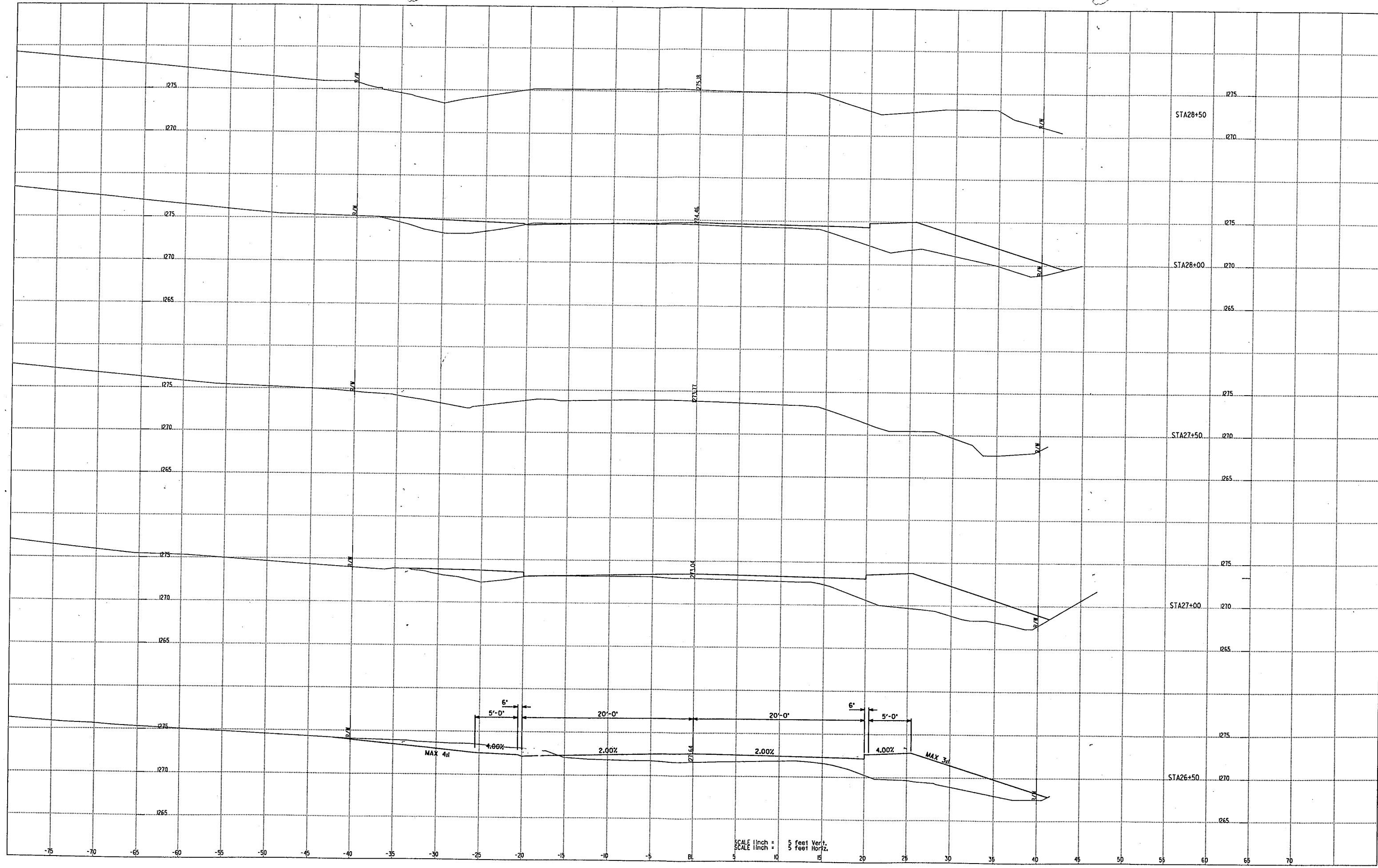
DRAWING REDUCED TO ONE-HALF ORIGINAL SCALE

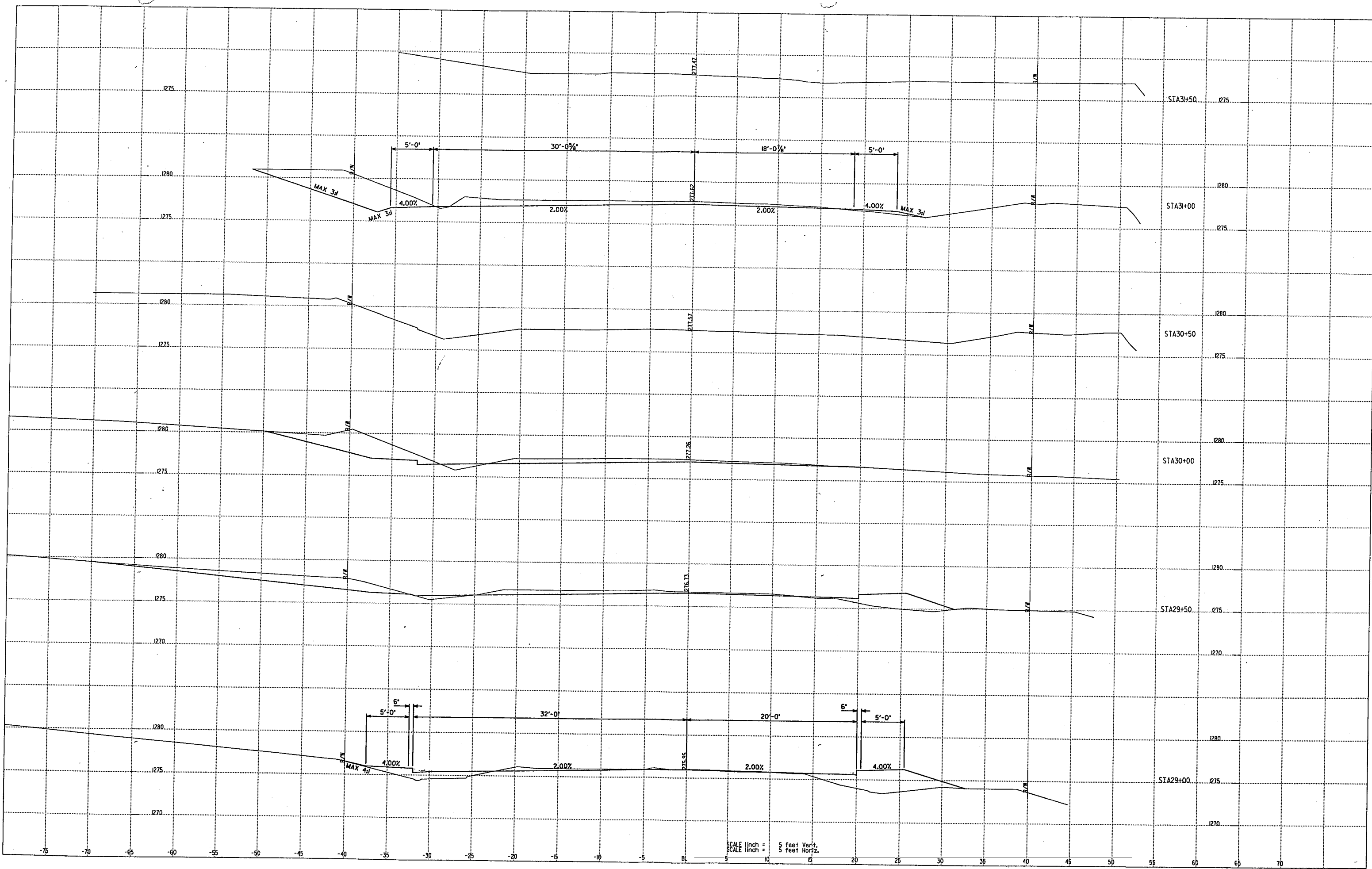


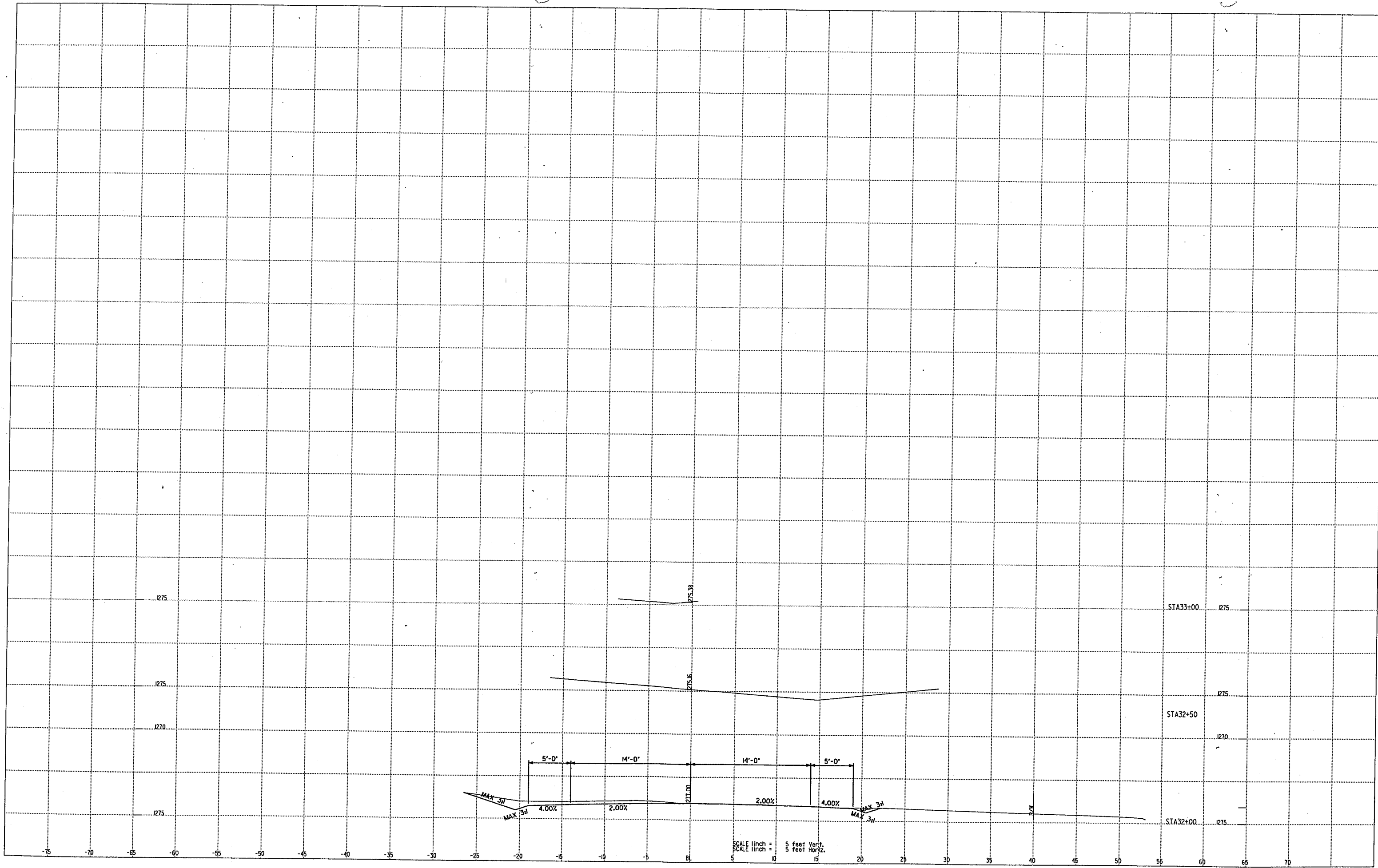
SCALE 1 inch = 5 feet Vert.
 SCALE 1 inch = 5 feet Horiz.











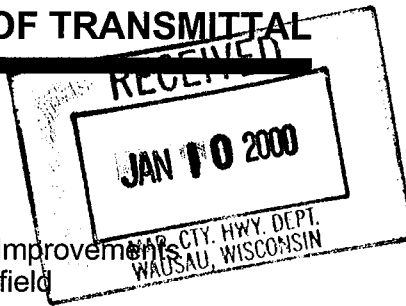
LETTER OF TRANSMITTAL

To: Jim Griesbach
Marathon County Highway Department
1430 West Street, PO Box 1245
Wausau, WI 54401

Date: January 7, 2000

Project No.: 23-0637.07

Re: Street and Utility Improvements
CTH "E" - Marshfield



Enclosed Under Separate Cover Via _____

No. of Copies	Description
1	Preliminary Plans

Sent to you for the following reason:

- For Approval Review Completed Revise and Resubmit
 For Your Use Not Reviewed Returned
 For Review and Comment

Remarks:

Jim,
If you have any immediate questions or concerns, please give me a call at (715) 831-7676.

Copy to: File,

Signed:

Doug Pederson