

INDEX OF SHEETS

| | |
|----------------|---|
| SHEET NO. 1 | TITLE |
| SHEET NO. 1 | TYPICAL CROSS SECTIONS |
| SHEET NO. 1 | ESTIMATE OF QUANTITIES |
| SHEET NO. — | MISCELLANEOUS QUANTITIES |
| SHEET NO. — | RIGHT OF WAY PLAT |
| SHEET NO. 2-12 | PLAN AND PROFILE STA. 122+03.6 TO STA. 437+60.3 |
| SHEET NO. 13 | STANDARD DETAILS |
| SHEET NO. — | DRAINAGE STRUCTURES |
| SHEET NO. — | CROSS SECTIONS |

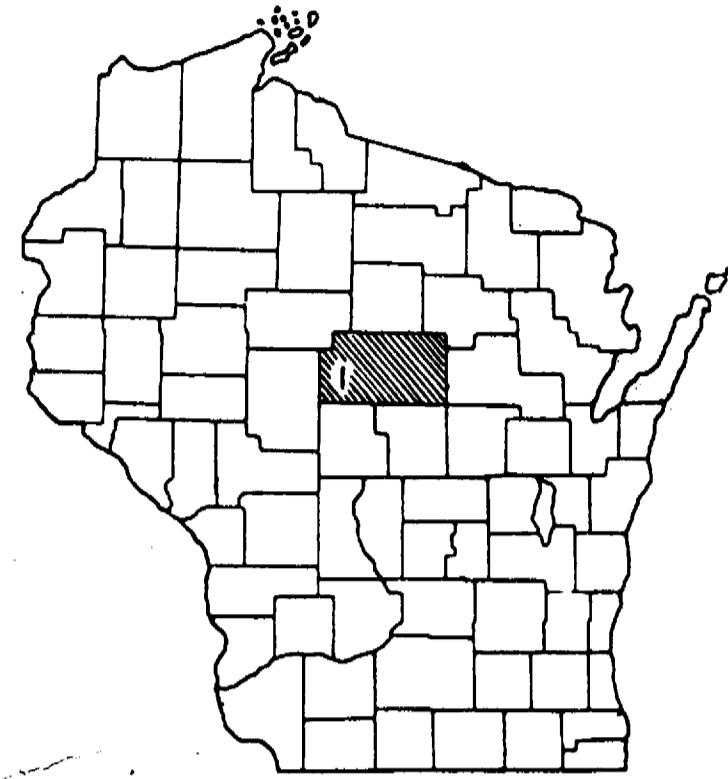
| COUNTY AND HIGHWAY | ROUTE AND SECTION | CLASS AND AGREEMENT | | S.P.R. REGION DIVISION | SHEET NUMBER | TOTAL SHEETS |
|--------------------|-------------------|---------------------|---------|------------------------|--------------|--------------|
| | | STATE | FEDERAL | | | |
| 37.6 | 18.0 | | 11.6 | 4 WIS. | 1 | 13 |

STATE OF WISCONSIN
STATE HIGHWAY COMMISSION OF WISCONSIN

PLAN AND PROFILE OF PROPOSED
C.T.H. "C" — C.T.H. "P" ROAD
C.T.H. "E"

MARATHON COUNTY

PROJECT S 018 (6)



ESTIMATE OF QUANTITIES

THIS PROJECT IS TO BE EXECUTED UNDER THE STANDARD SPECIFICATIONS FOR ROAD AND BRIDGE CONSTRUCTION OF THE STATE HIGHWAY COMMISSION OF WISCONSIN— EDITION OF 1963, SUBMITTED FOR APPROVAL JANUARY 25, 1963, AND SPECIAL PROVISIONS AS ATTACHED TO PROPOSALS

| ITEM NO. | ITEM | QUANTITY | UNIT |
|----------|-------------------------------------|----------|---------|
| 21201 | GRANULAR SUBBASE COURSE | 45,174 | CU. YD. |
| 30402 | GRAVEL OR CRUSHED STONE BASE COURSE | 44,663 | TON |

NET C LENGTH — 31556.70 LIN. FT.

GENERAL NOTE

WHEN THE QUANTITY OF THE ITEMS OF SUBBASE, BASE OR SURFACE COURSE IS MEASURED FOR PAYMENT BY THE TON OR BY CUBIC YARD, THE DEPTH OR THICKNESS OF THE COURSE SHOWN ON THE PLANS IS APPROXIMATE AND THE ACTUAL THICKNESS WILL DEPEND UPON THE DISTRIBUTION OF MATERIAL AS DIRECTED BY THE ENGINEER.
SHEETS 2-12 INCLUDED TO SHOW PROFILE AND ALIGNMENT ONLY. OTHER INFORMATION NOT PERTINENT TO THIS CONTRACT.

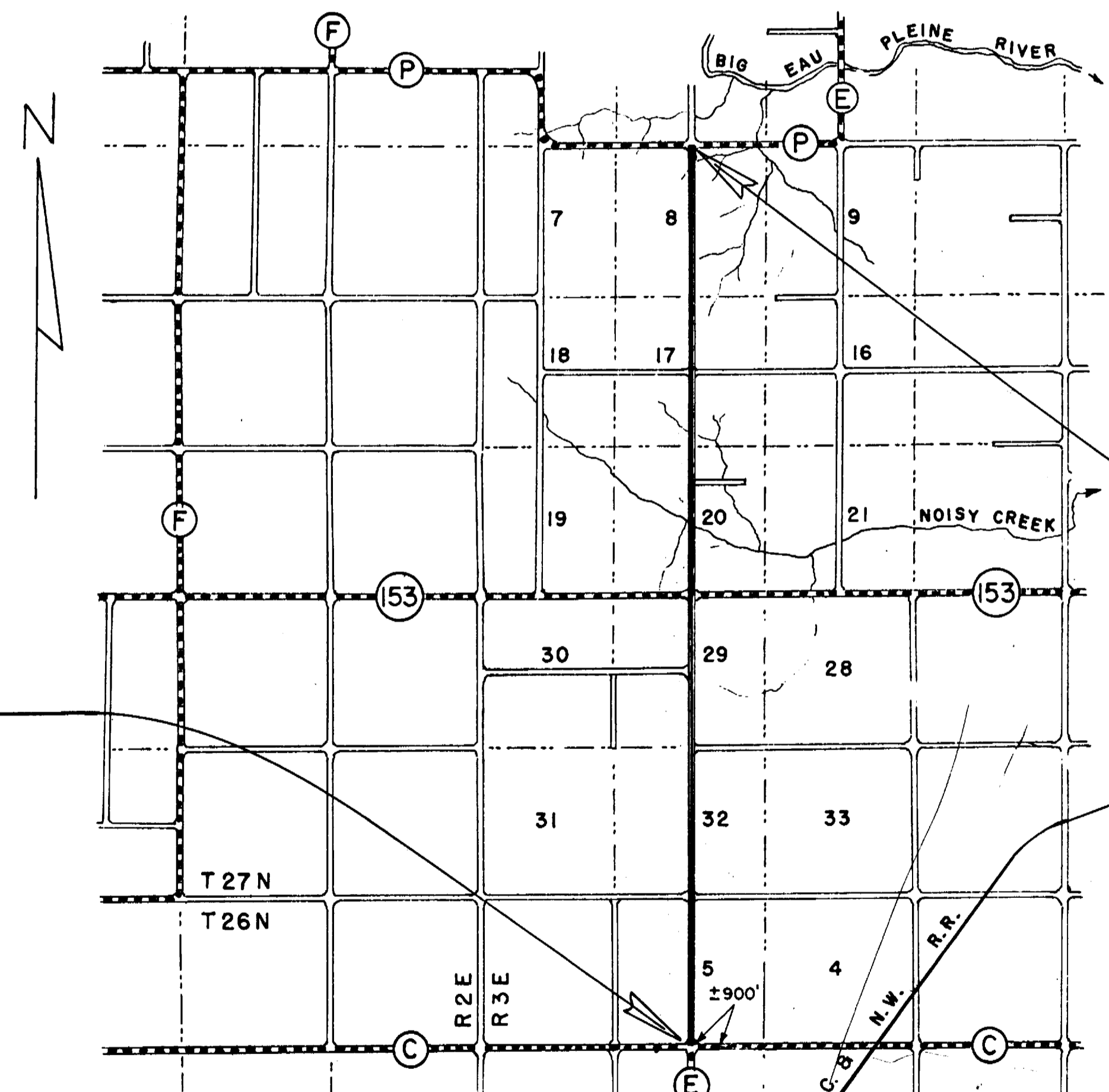
APPLICABLE STANDARD DETAIL DRAWING

7-4.1.4 CONSTRUCTION BARRICADE

BEGINNING OF PROJECT S 018 (6)
STA. 122 + 03.6 = SO. 1/4 COR. OF SEC. 5 T 26N, R 3E
= END OF PROJECT S 018 (2)(3)
STA. 122 + 03.6

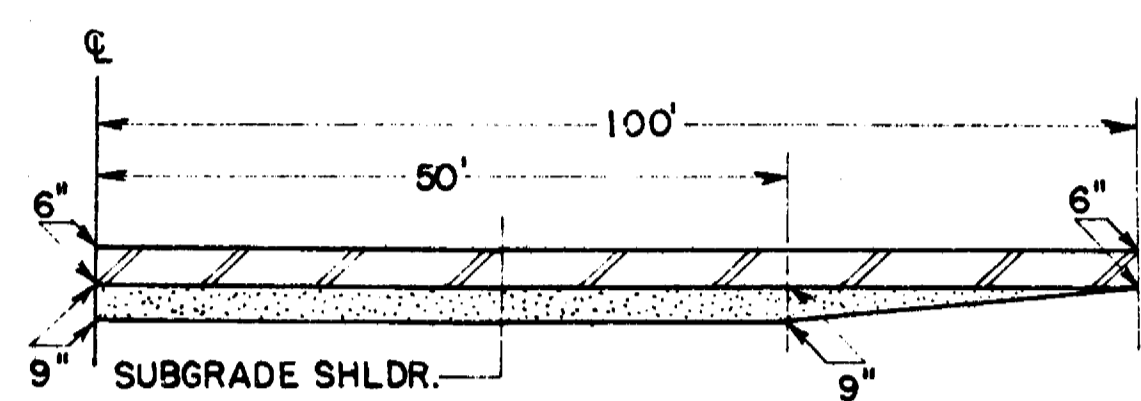
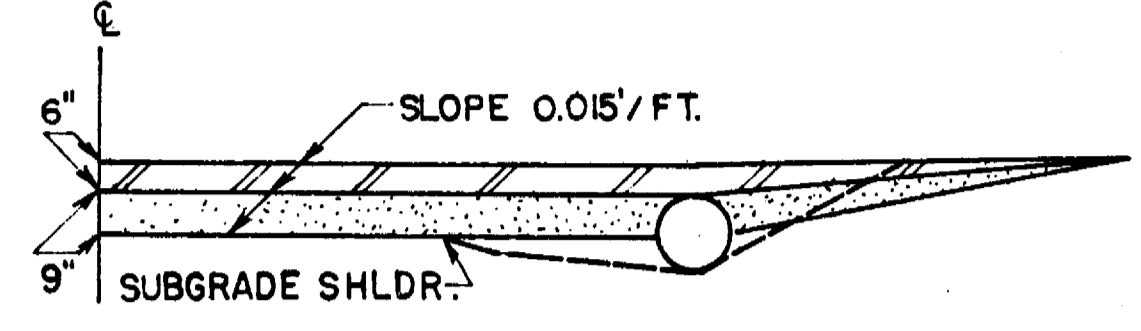
CONVENTIONAL SIGNS

| | |
|--------------------------------|------------------------------------|
| STATE LINE..... | CULVERTS IN PLACE..... |
| COUNTY LINE..... | CULVERTS REQUIRED..... |
| TOWNSHIP OR RANGE LINE..... | DROP INLET..... |
| SECTION LINE..... | POWER POLE..... |
| NEW RIGHT OF WAY LINE..... | TELEPHONE OR TELEGRAPH POLE..... |
| PRESENT RIGHT OF WAY LINE..... | RIGHT OF WAY MARKERS..... |
| WIRE FENCE { WOVEN..... | REFERENCE STAKE FOR HUBS ONLY..... |
| { BARBED..... | MARSH..... |
| LOT LINE..... | HEDGE..... |
| CORPORATE OR CITY LIMITS..... | TREES..... |
| PROPERTY LINE..... | GROUND ELEVATION..... |
| TRAVELED WAY OR P.E..... | GRADE ELEVATION..... |
| RAILROADS..... | |
| BASE OR SURVEY LINE..... | |

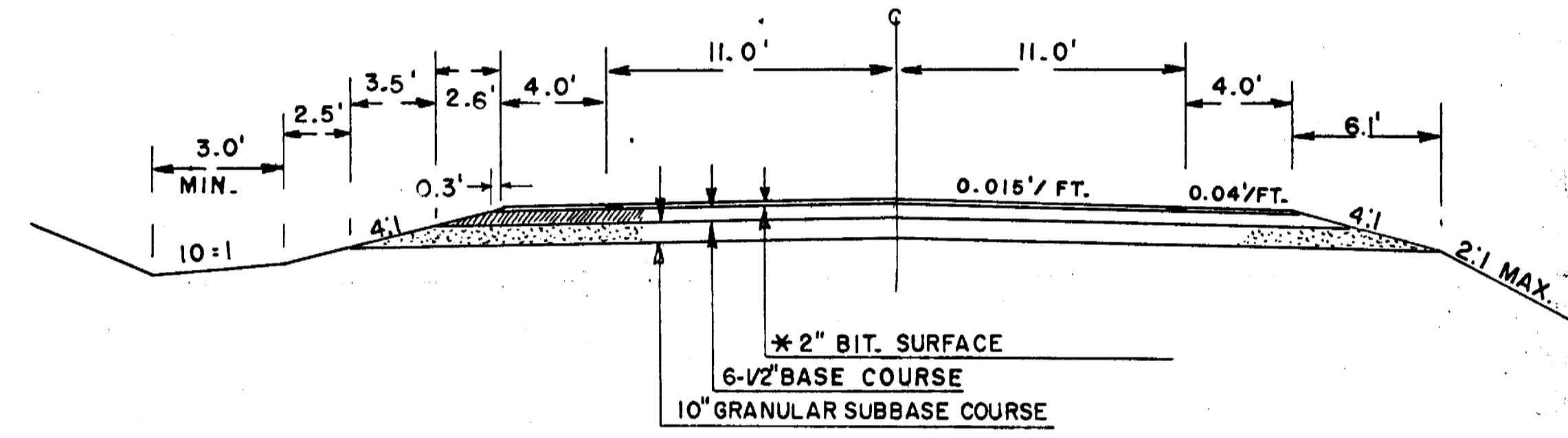


LAYOUT
SCALE ONE MILE
TOTAL NET LENGTH OF CENTERLINE = 5.977 MI.

PROFILE SHOWING GRAVEL OR CRUSHED STONE BASE COURSE AND GRANULAR SUBBASE COURSE RUNOUT AT ENTRANCES.



PROFILE SHOWING GRANULAR SUBBASE COURSE RUNOUT AT SIDE ROADS



* NOT A PART OF THIS CONTRACT

END OF PROJECT S 018 (6)
STA. 437 + 60.3 = NO. 1/4 COR. OF SEC. 8 T 27N, R 3E
= BEGINNING OF PROJECT S 018 (4)(5)
STA. 147 + 25.3

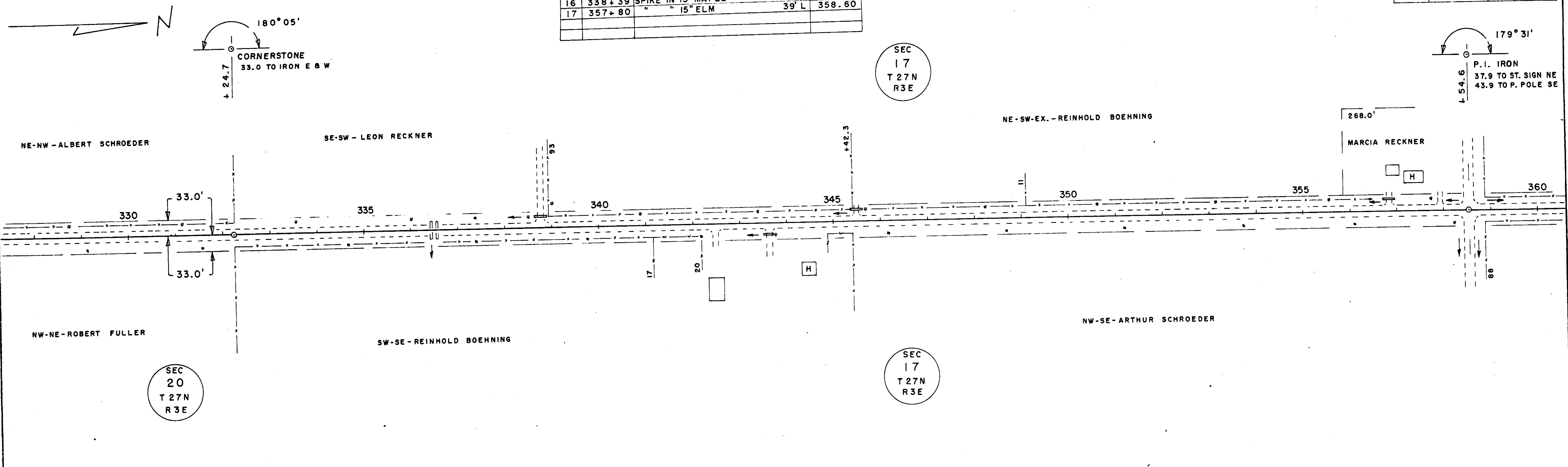
| | | | |
|---|---------|------------------------|----------|
| STATE HIGHWAY COMMISSION OF WISCONSIN MADISON WIS. | | | |
| SURVEYOR | CEC | NOTE BOOK | M 63 |
| DIVISION COMPUTER | | M. O. CHECKER | W. H. B. |
| DISTRICT CHECKER | | CORRECT | |
| CORRECT: | | | |
| DATE | 4/22/63 | Dist. Engineer | |
| RECOMMENDED FOR APPROVAL: | | | |
| DATE | 5-10-63 | Eng. of Design | |
| APPROVED: | | | |
| DATE | 5/10/63 | State Highway Engineer | |
| DEPARTMENT OF COMMERCE BUREAU OF PUBLIC ROADS | | | |
| APPROVED: [Signature] DATE: [] | | | |
| DIVISION ENGINEER | | | |

S 018(6)

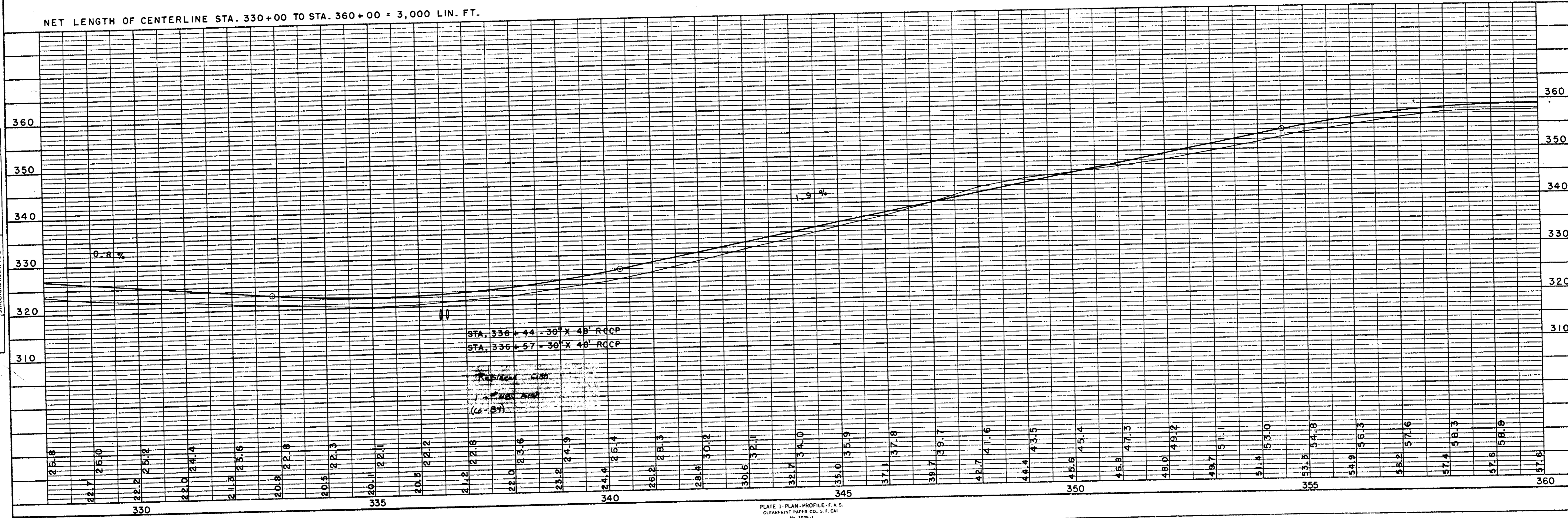
C.T.H. "E"

| B.P.R. DIVISION | PROJECT | SHEET NUMBER | TOTAL SHEETS |
|-----------------|----------|--------------|--------------|
| 4 | S 018(6) | 9 | 13 |

| BENCH MARKS | | | | |
|-------------|--------|--------------------|-------|--------|
| 16 | 338+39 | SPIKE IN 15" MAPLE | 47' L | 322.11 |
| 17 | 357+80 | " " 15" ELM | 39' L | 358.60 |



NET LENGTH OF CENTERLINE STA. 330+00 TO STA. 360+00 = 3,000 LIN. FT.



STA. 336+44 - 30' X 48" R.C.C.P.
 STA. 336+57 - 30' X 48" R.C.C.P.
 REVISION WITH
 (6-87)

PLOTTED
 CHECKED
 BY
 NO.

PLOTTED
 CHECKED
 BY
 NO.

| BENCH MARKS | | | |
|-------------|----------|------------------|--------------|
| 17 | 357 + 80 | SPIKE IN 15" ELM | 39' L 358.60 |
| 18 | 382 + 69 | " " 15" ELM | 52' R 354.60 |

C.T.H. "E"

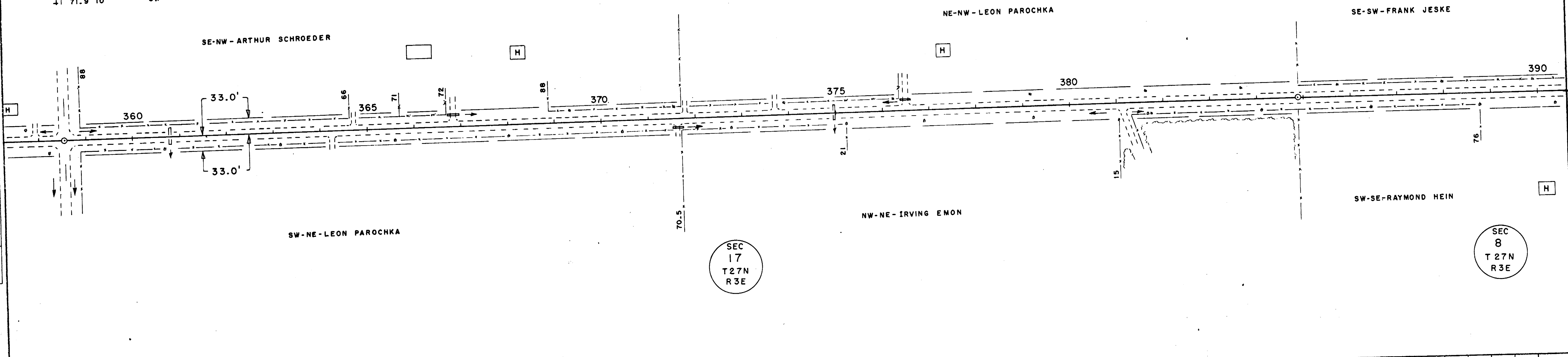
179° 31'
 P.I. IRON
 37.9 TO STOP SIGN NE
 43.9 TO POW. POLE SE
 69.7 TO 20" OAK NE
 71.9 TO " " SW

SEC
 17
 T 27N
 R 3E

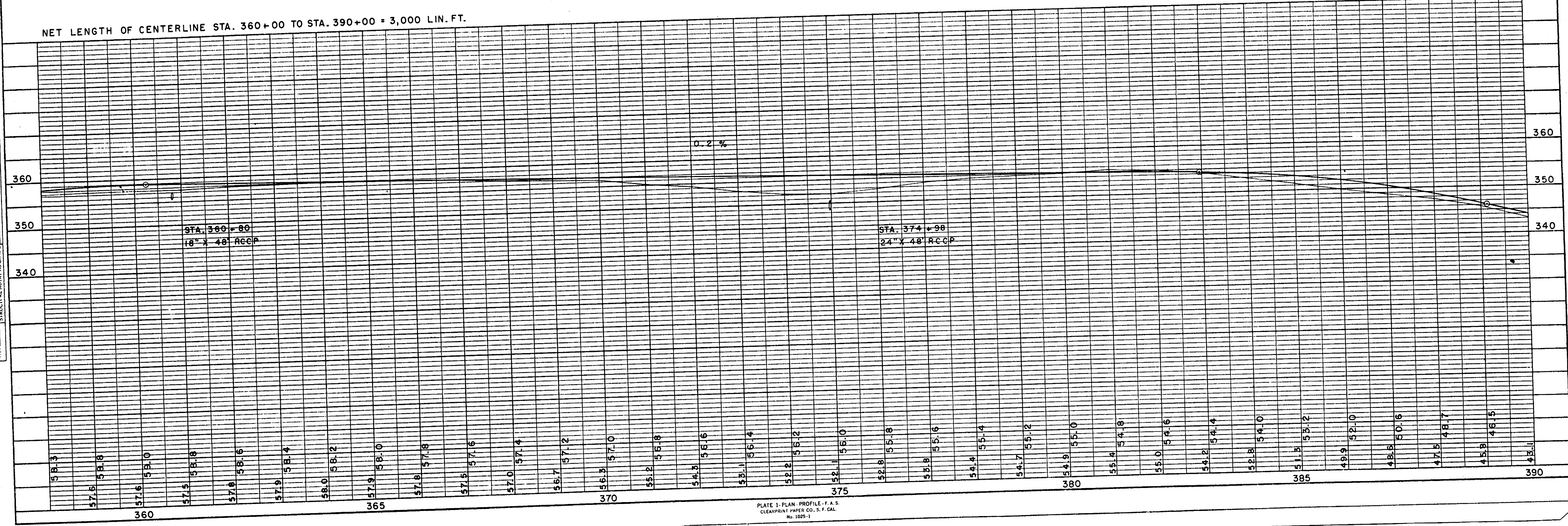
180° 22'
 CORNERSTONE
 33.0 TO IRON E. & W.

NOTE BOOK NO. _____
 PLOTTED _____
 ALIGNMENT CHECKED _____
 SET OF WAY CHECKED _____

NOTE BOOK NO. _____
 PLOTTED _____
 PROFILE CHECKED _____
 B. & S. NOTED _____
 STRUCTURE NOTATION CHECKED _____



NET LENGTH OF CENTERLINE STA. 360+00 TO STA. 390+00 = 3,000 LIN. FT.

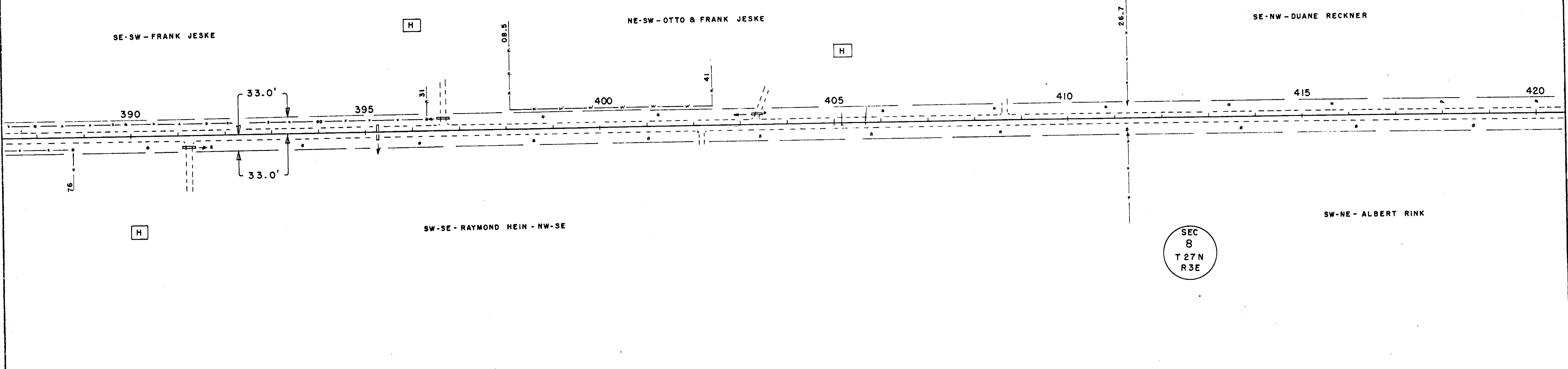


| B.P.R. DIVISION | PROJECT | SHEET NUMBER | TOTAL SHEETS |
|-----------------|----------|--------------|--------------|
| 4 | S 018(6) | 11 | 13 |

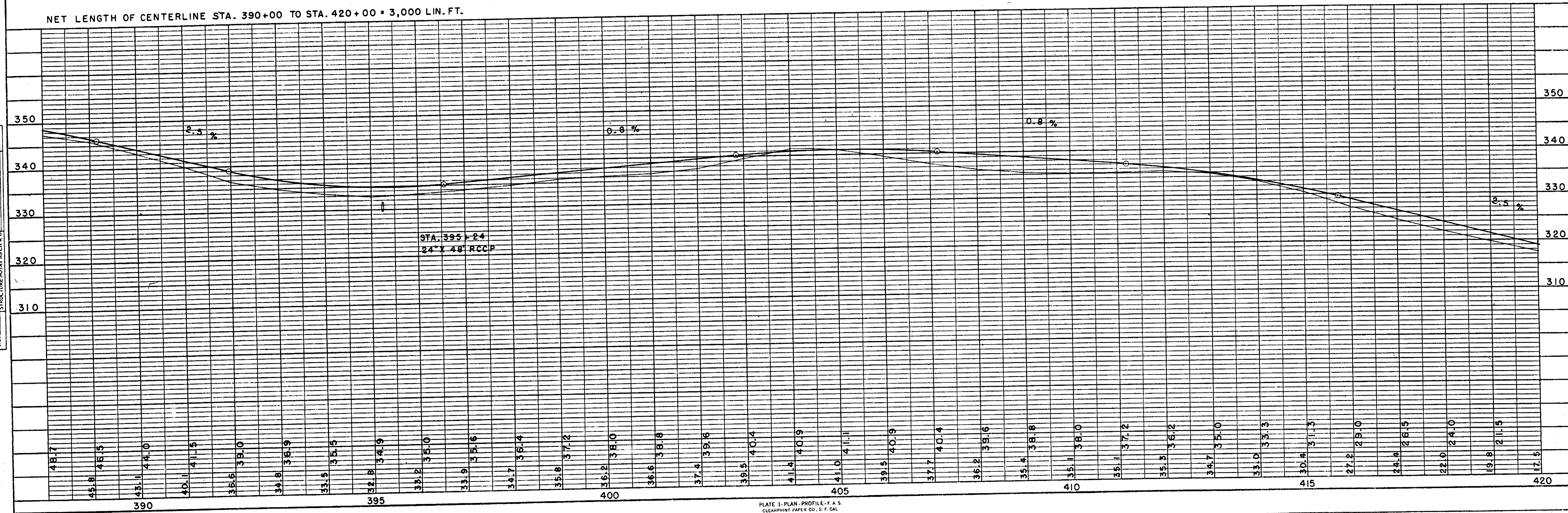
| BENCH MARKS | | | |
|-------------|--------|------------------|--------------|
| 19 | 404+79 | SPIKE IN 18" OAK | 33' L 342.70 |
| 20 | 423+24 | " " 20" PINE | 35' L 311.29 |

SEC
8
T 27N
R 3E

SEC
8
T 27N
R 3E



NET LENGTH OF CENTERLINE STA. 390+00 TO STA. 420+00 = 3,000 LIN. FT.

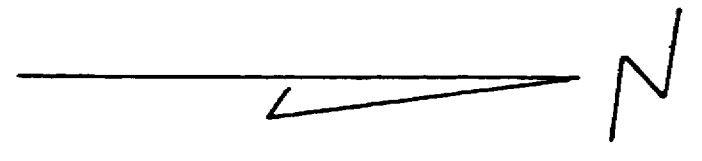


PLOTTED
 ALIGNMENT CHECKED
 PL. OF W.M. CHECKED
 NO.

PLOTTED
 ALL NOTED
 STRUCTURE NOTATION CHECKED
 NO.

| BPR DIVISION | PROJECT | SHEET NUMBER | TOTAL SHEETS |
|--------------|----------|--------------|--------------|
| 4 | S O18(6) | 12 | 13 |

| BENCH MARKS | | | | |
|-------------|--------|-------------------|-------|--------|
| 20 | 423+24 | SPIKE IN 20" PINE | 35' L | 311.29 |
| 21 | 436+70 | " " " " | 48' R | 306.81 |



SEC 8
T 27N
R 3E

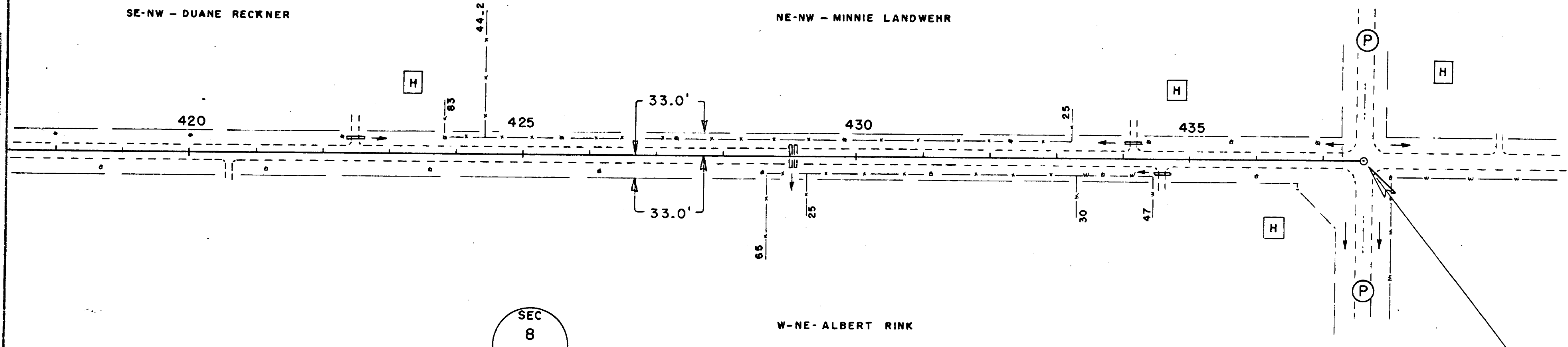
SEC 8
T 27N
R 3E

89°49'
CORNERSTONE
47.0 TO POW. POLE NE
73.5 TO TEL. POLE SW
36.9 TO STOP SIGN NW
57.9 TO F.A.S. SIGN NW
68.9 TO " " SE

SE-NW - DUANE RECKNER

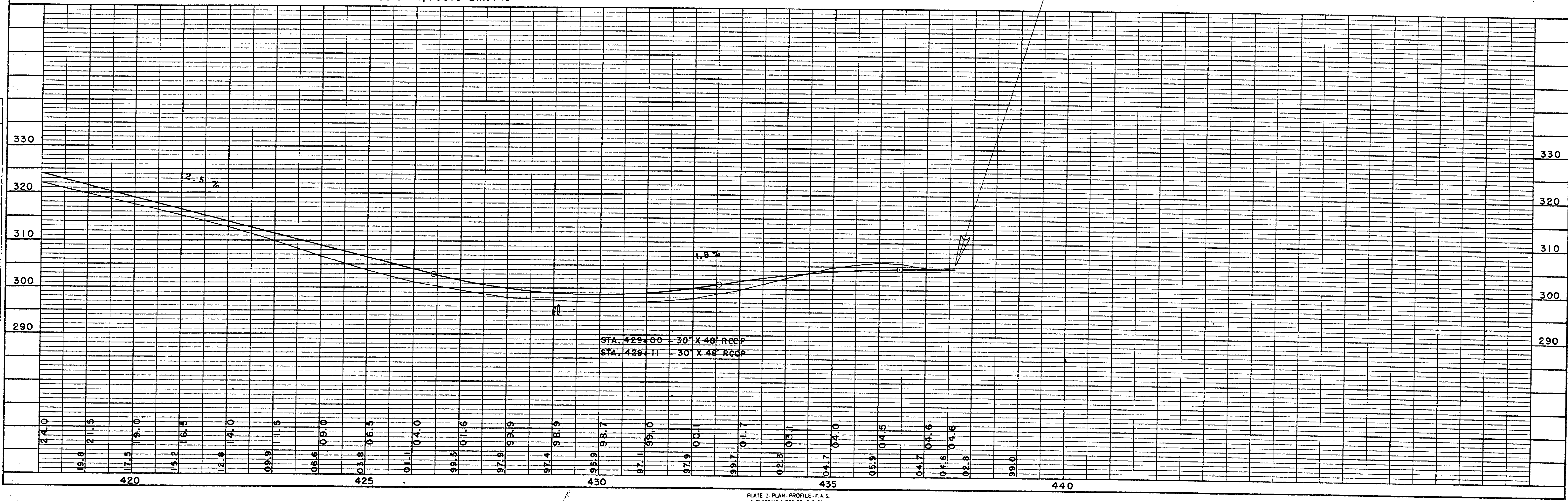
NE-NW - MINNIE LANDWEHR

W-NE - ALBERT RINK



END OF PROJECT S O18(6)
STA. 437 + 60.3 = NO. 1/4 COR. SEC. 8
= STA. 147 + 25.3 PROJECT S O18 (4)

NET LENGTH OF CENTERLINE STA. 420+00 TO STA. 437 + 60.3 = 1,760.3 LIN. FT.



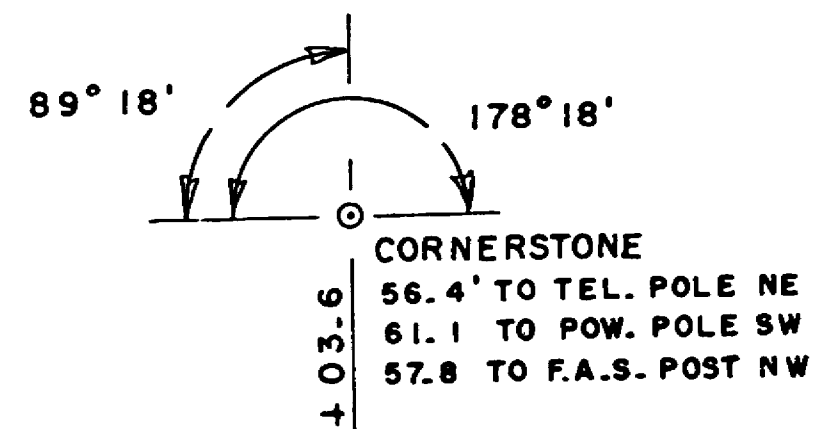
NOTED
NOTE BOOK
ALIGNED CHECKED
BY
NO.

NOTED
NOTE BOOK
PLOTTED
BY
NO.

C.T.H. "E"

| BENCH MARKS | | | | |
|-------------|--------|--------------------|-------|--------|
| 1 | 121+50 | SPIKE IN 10" APPLE | 220'R | 316.80 |
| 2 | 135+17 | " " POWER POLE | 41'L | 309.01 |

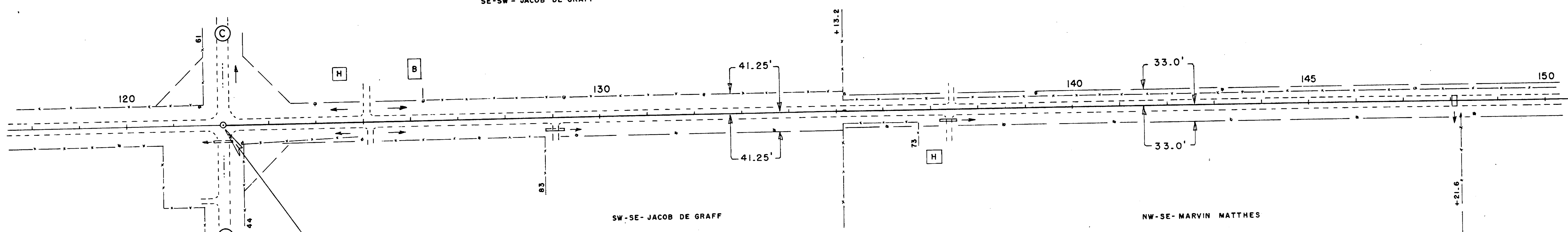
| B.P.R. DIVISION | PROJECT | SHEET NUMBER | TOTAL SHEETS |
|-----------------|----------|--------------|--------------|
| 4 | S 018(6) | 2 | 13 |



SE-SW - JACOB DE GRAFF

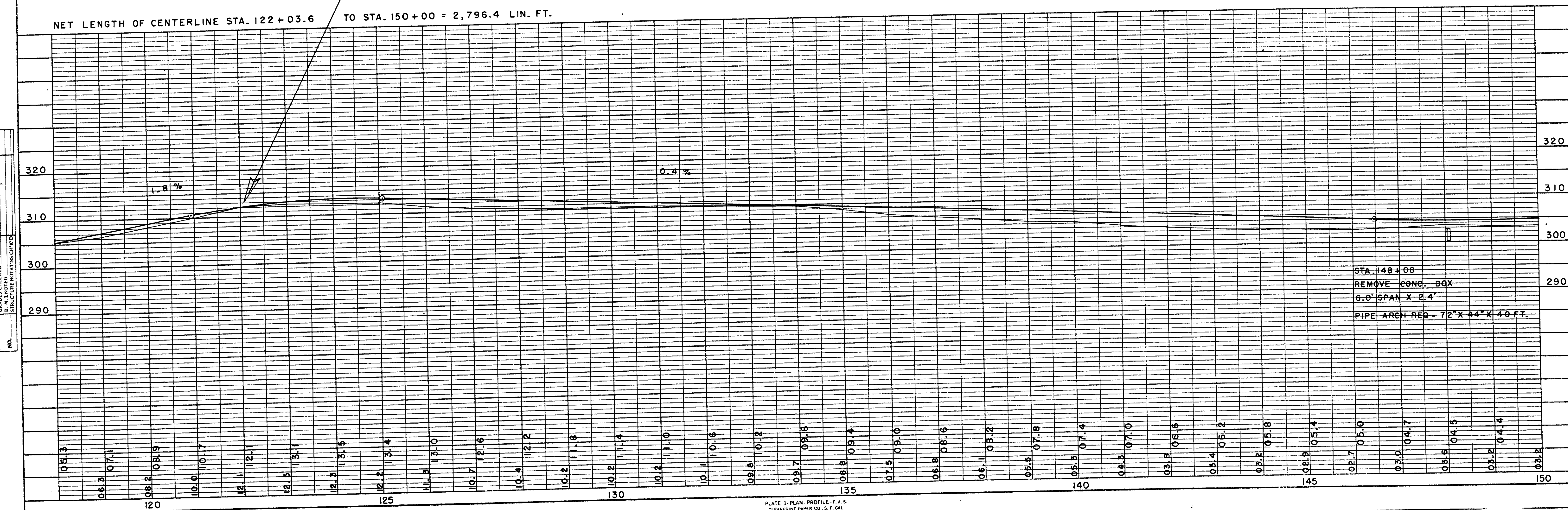
NE-SW - OSCAR STEINER

SEC 5
T 26 N
R 3 E



BEGINNING OF PROJECT S 018(6)
 STA. 122 + 03.6 = SOUTH 1/4 CORNER OF SEC. 5
 = END OF PROJECT S 018(2)

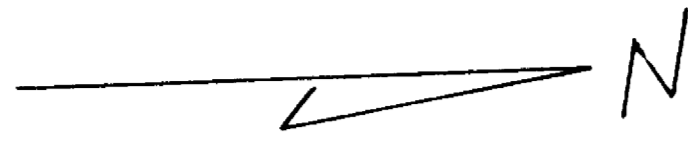
NET LENGTH OF CENTERLINE STA. 122 + 03.6 TO STA. 150 + 00 = 2,796.4 LIN. FT.



SURVEYED
 PLOTTED
 ALIGNED CHECKED
 RT. OF WAY CHECKED
 NO.

SURVEYED
 PLOTTED
 CHECKED
 STRUCTURE NOTATIONS CHECKED
 NO.

C.T.H. "E"



| BENCH MARKS | | | |
|-------------|--------|------------------------|--------------|
| 3 | 169+57 | SPIKE IN 15" OAK | 36' L 328.83 |
| 4 | 173+15 | TOP CONC. STEP NE COR. | 61' L 336.36 |

| B.P.R. DIVISION | PROJECT | SHEET NUMBER | TOTAL SHEETS |
|-----------------|----------|--------------|--------------|
| 4 | S 018(6) | 3 | 13 |

SEC 5
T 26 N
R 3 E

SEC 32
T 27 N
R 3 E

SE-NW - OSCAR STEINER

NE-NW-EX. - ALFRED BECKER

ST. ALBERT PARISH

HAROLD MACHTAN

SW-NE - HERBERT LAU

NW-NE - WILLIAM GULDAN

SW-SE - JOHN VERHUNCE

NET LENGTH OF CENTERLINE STA. 150+00 TO STA. 180+00 = 3,000 LIN. FT.

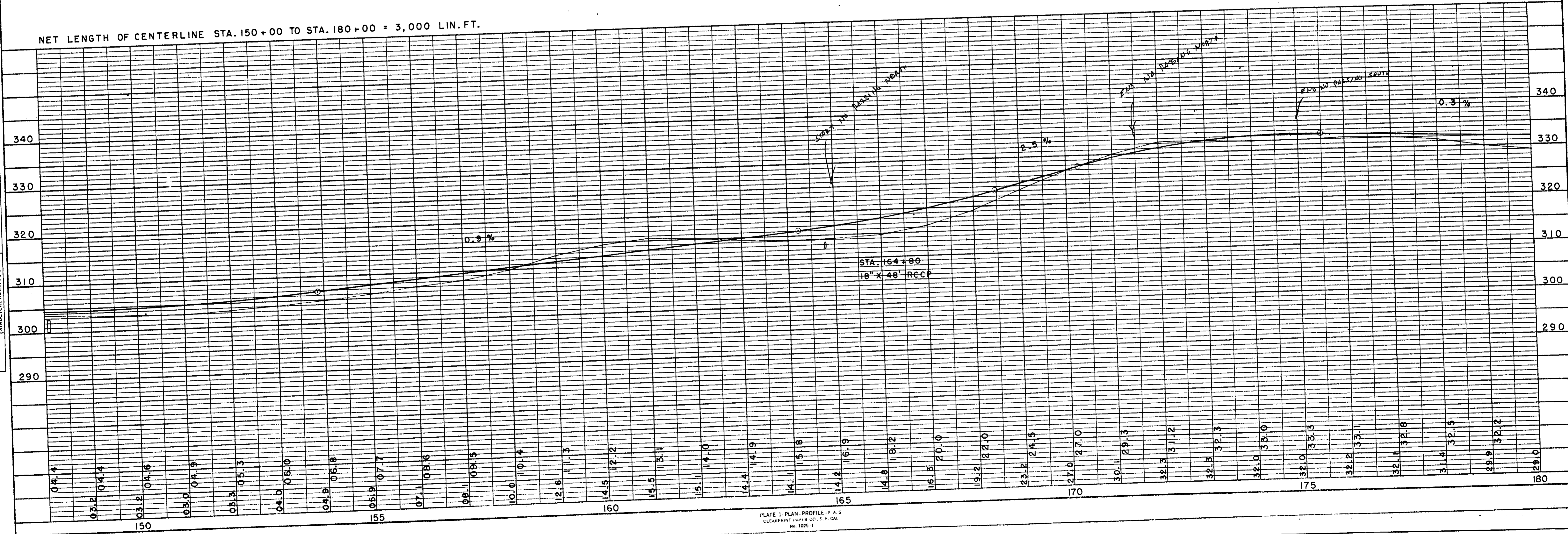
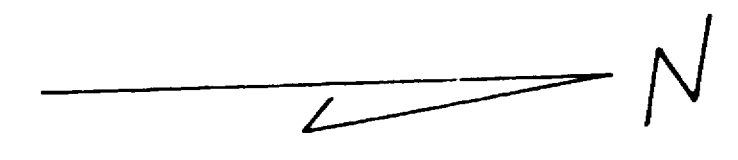


PLATE 1 - PLAN - PROFILE - F.A.S.
CLEARPRINT FORM CO. - S.F. CA
No. 1025-1

NOTE BOOK PLOTTED
ALIGNMENT CHECKED
RT. OF WAY CHECKED
NO.

NOTE BOOK PLOTTED
ALIGNMENT CHECKED
B.M. NOTED
STRUCTURE NOTATIONS CHECKED
NO.

C.T.H. "E"



| BENCH MARKS | | | |
|-------------|--------|-----------------------|-------------|
| 5 | 198+35 | SPIKE IN 12" APPLE | 46'R 328.14 |
| 6 | 211+09 | TOP NAME PLATE ON BOX | 12'R 321.34 |

| S.P.R. DIVISION | PROJECT | SHEET NUMBER | TOTAL SHEETS |
|-----------------|----------|--------------|--------------|
| 4 | S 018(6) | 4 | 13 |

SEC 32 T 27N R 3E

SEC 32 T 27N R 3E

SE-SW-EX. - ISADORE BEYEL

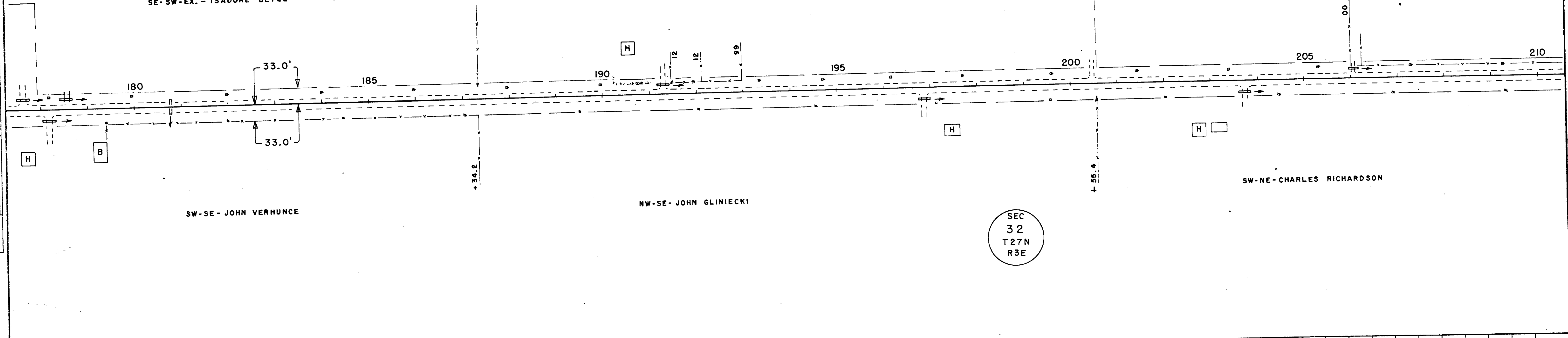
NE-SW - EDWARD JOZWIAK

SE-NW - EDWARD MOBERG

SW-SE - JOHN VERHUNCE

NW-SE - JOHN GLINIECKI

SW-NE - CHARLES RICHARDSON



NET LENGTH OF CENTERLINE STA. 180+00 TO STA. 210+00 = 3,000 LIN. FT.

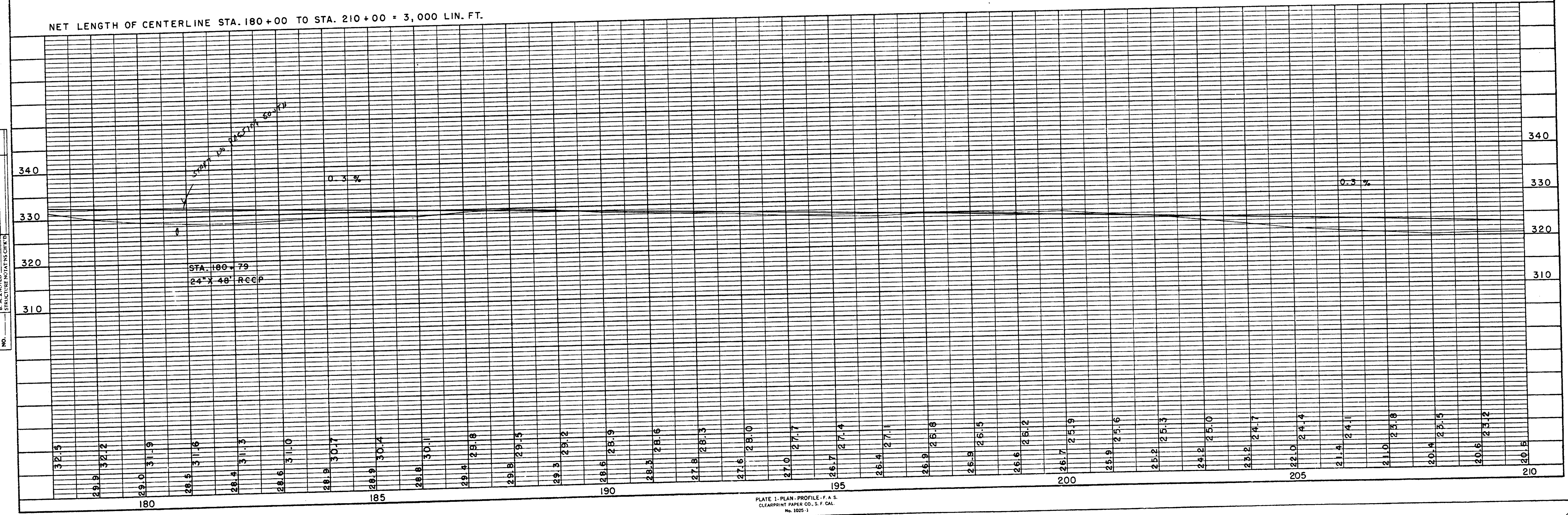


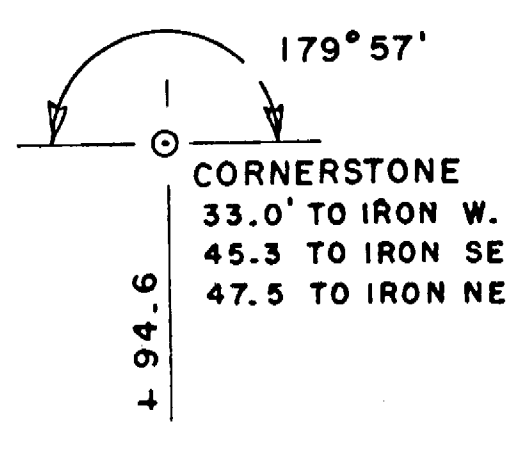
PLATE 1 - PLAN - PROFILE - F. A. S. CLEARPRINT PAPER CO., S. F. CAL. No. 1025-1

NOTES BOOK NO. 10178
CHECKED BY: [blank]
DATE: [blank]

NOTES BOOK NO. 10178
CHECKED BY: B. W. LANGRISH
DATE: [blank]

| BENCH MARKS | | | |
|-------------|--------|-----------------------|-------------|
| 6 | 211+09 | TOP NAME PLATE ON BOX | 12'R 321.34 |
| 7 | 222+56 | SPIKE IN POW. POLE | 36'R 329.75 |
| 8 | 227+29 | " " " " | 45'R 336.39 |

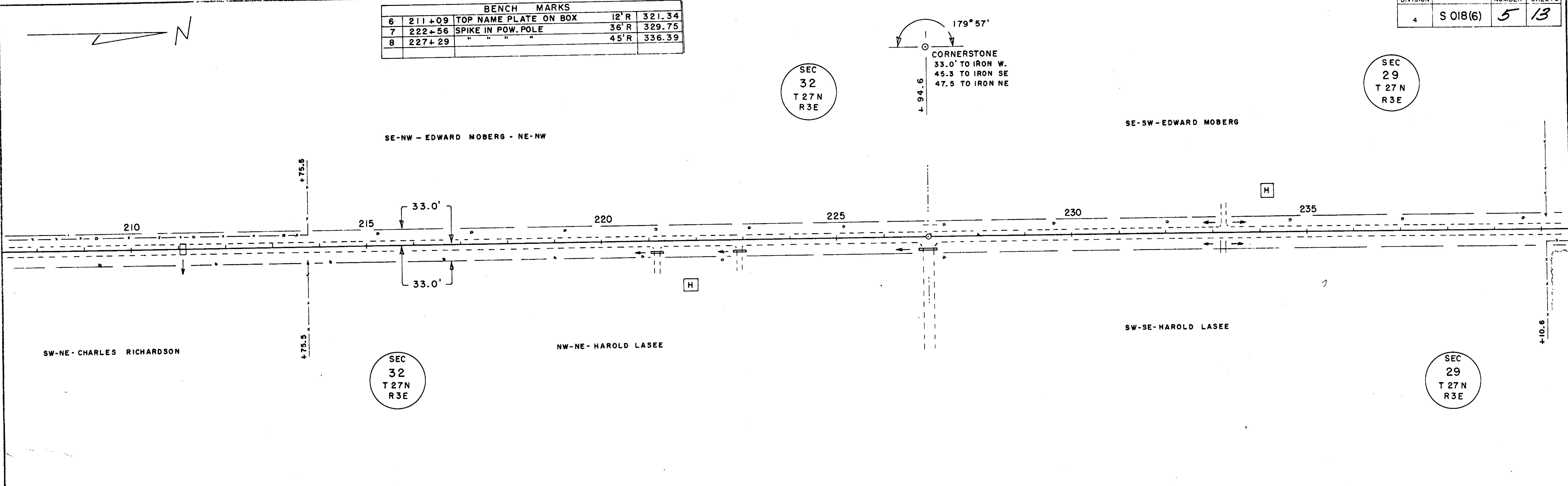
SEC
32
T 27N
R 3E



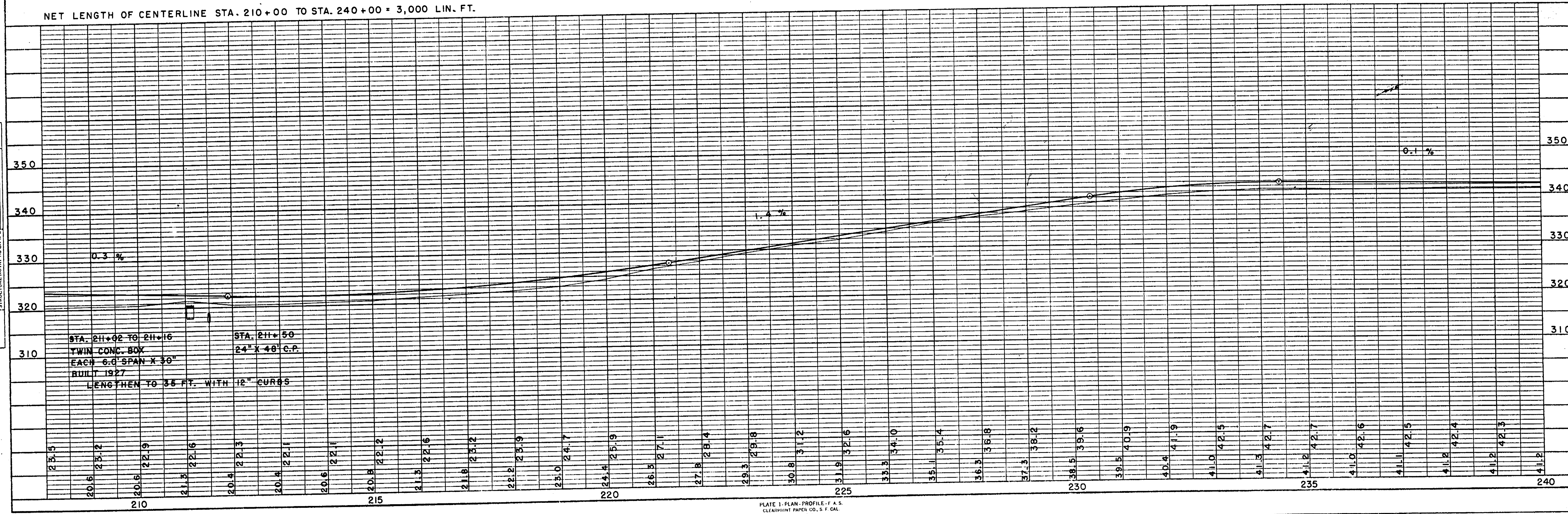
SEC
29
T 27N
R 3E

PLOTTED
 ALIGNMENT CHECKED
 BY G. W. L. LEECH
 NO.

PLOTTED
 PROFILE CHECKED
 BY W. S. NOTED
 STRUCTURE NOTATION CH'KD
 NO.

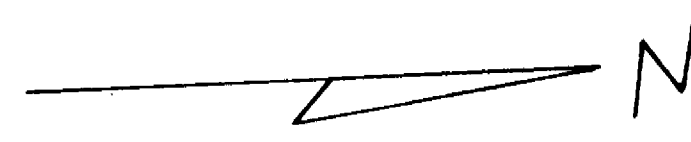


NET LENGTH OF CENTERLINE STA. 210+00 TO STA. 240+00 = 3,000 LIN. FT.

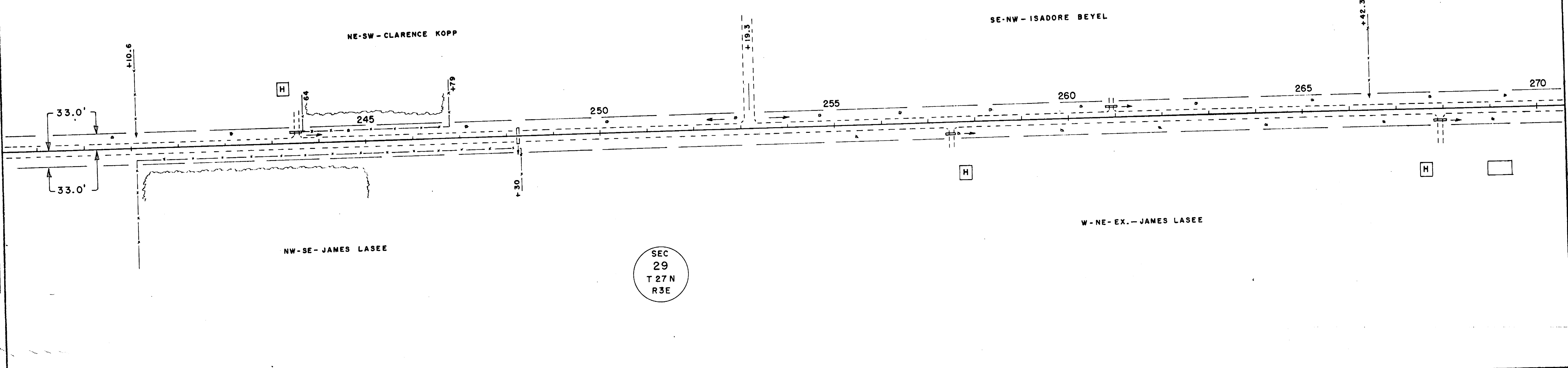


C.T.H. "E"

| BENCH MARKS | | | |
|-------------|----------|------------------|--------------|
| 9 | 243 + 15 | SPIKE IN 20" OAK | 36' L 340.99 |
| 10 | 257 + 37 | " " 15" ASPEN | 72' R 339.74 |

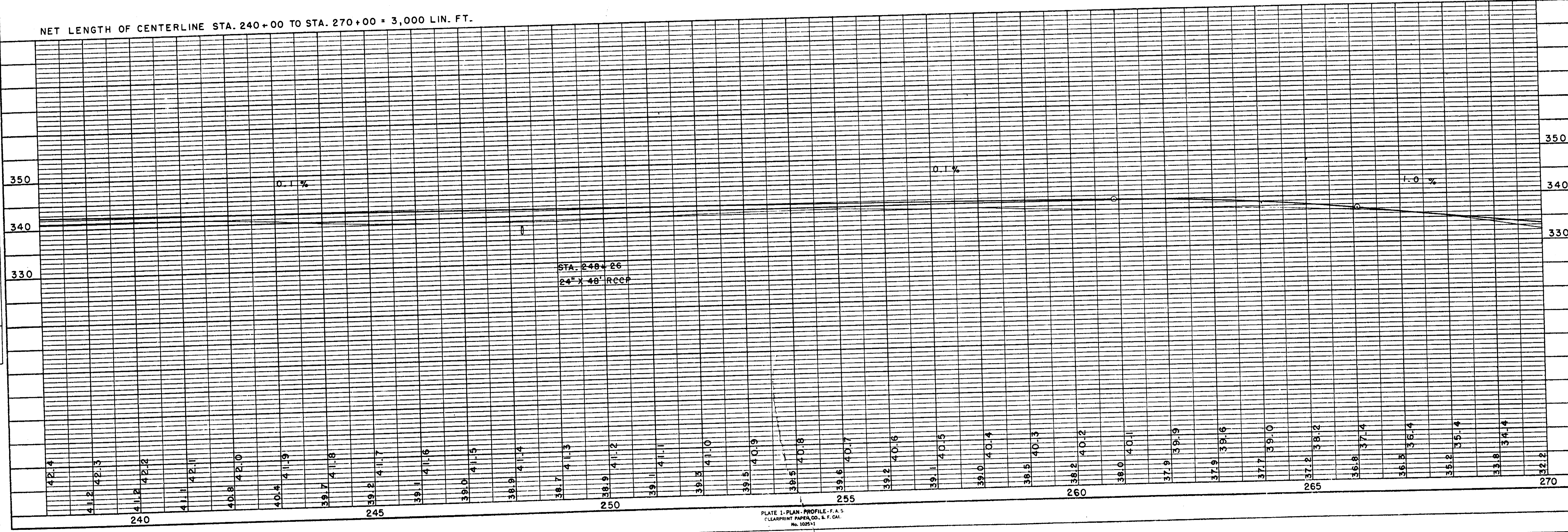


SEC
29
T 27N
R 3E



SEC
29
T 27N
R 3E

NET LENGTH OF CENTERLINE STA. 240+00 TO STA. 270+00 = 3,000 LIN. FT.



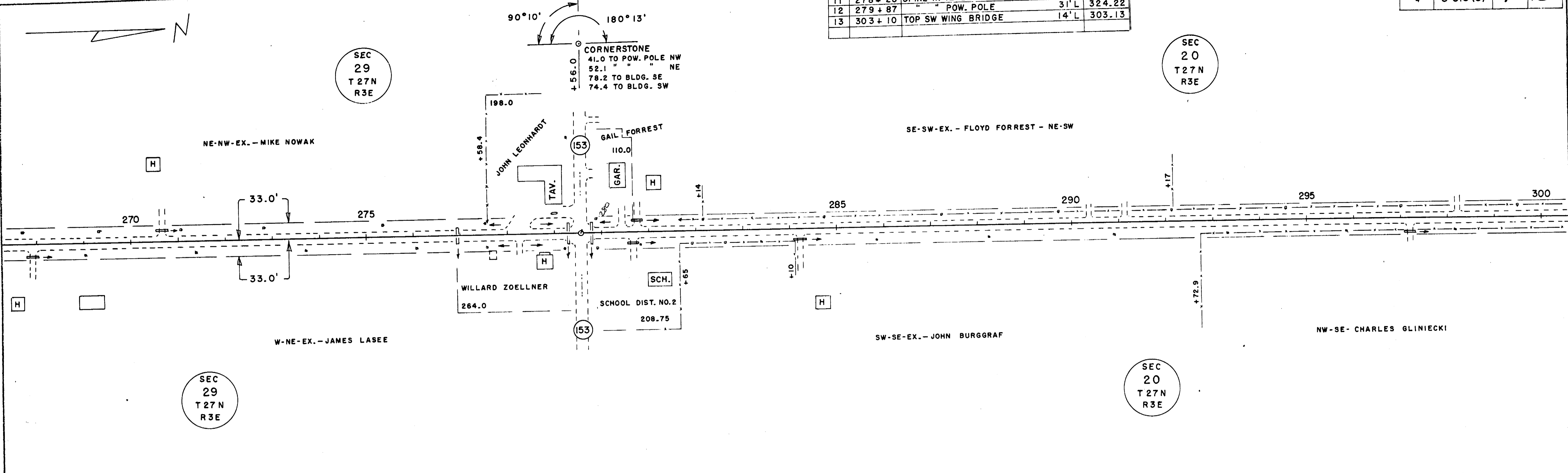
PLOTTED
 ALIGNMENT CHECKED
 H.I. OF WAY CHECKED
 NO.

PLOTTED
 GRADES CHECKED
 B. M. ENGINEER'S CHECKED
 DATE: 10/15/50

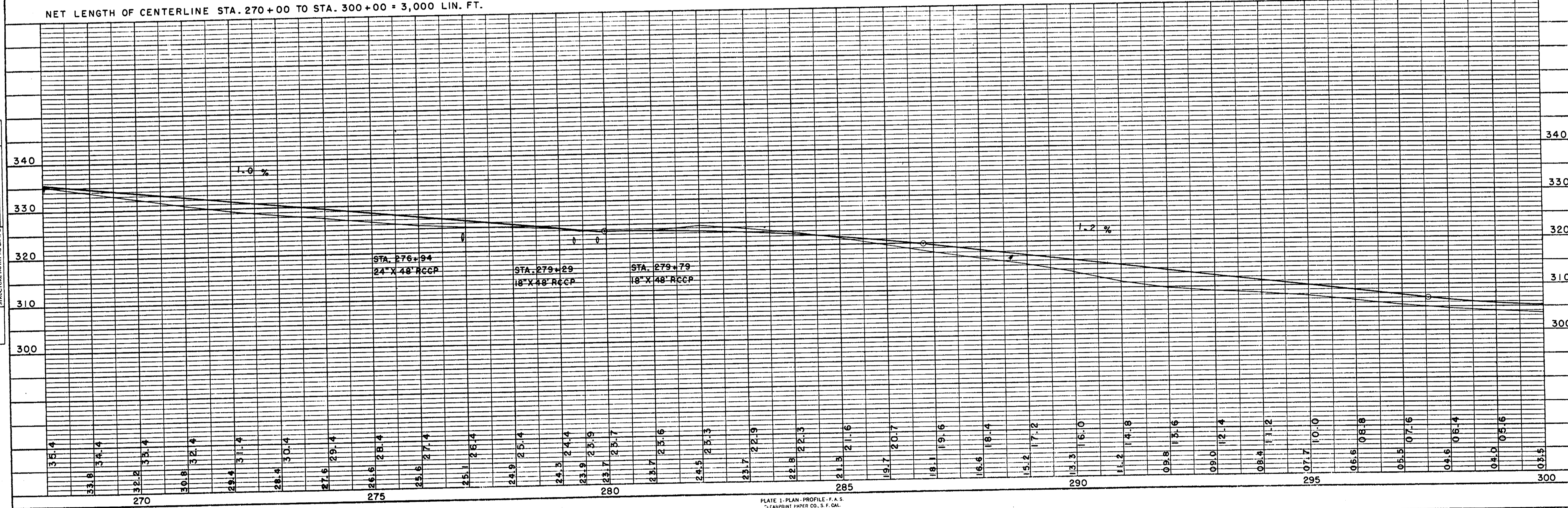
C.T.H. "E"

| BENCH MARKS | | | |
|-------------|--------|--------------------|-------------|
| 11 | 278+28 | SPIKE IN 12" ELM | 56'L 326.91 |
| 12 | 279+87 | " " POW. POLE | 31'L 324.22 |
| 13 | 303+10 | TOP SW WING BRIDGE | 14'L 303.13 |

| B.P.R. DIVISION | PROJECT | SHEET NUMBER | TOTAL SHEETS |
|-----------------|----------|--------------|--------------|
| 4 | S O18(6) | 7 | 13 |



NET LENGTH OF CENTERLINE STA. 270+00 TO STA. 300+00 = 3,000 LIN. FT.



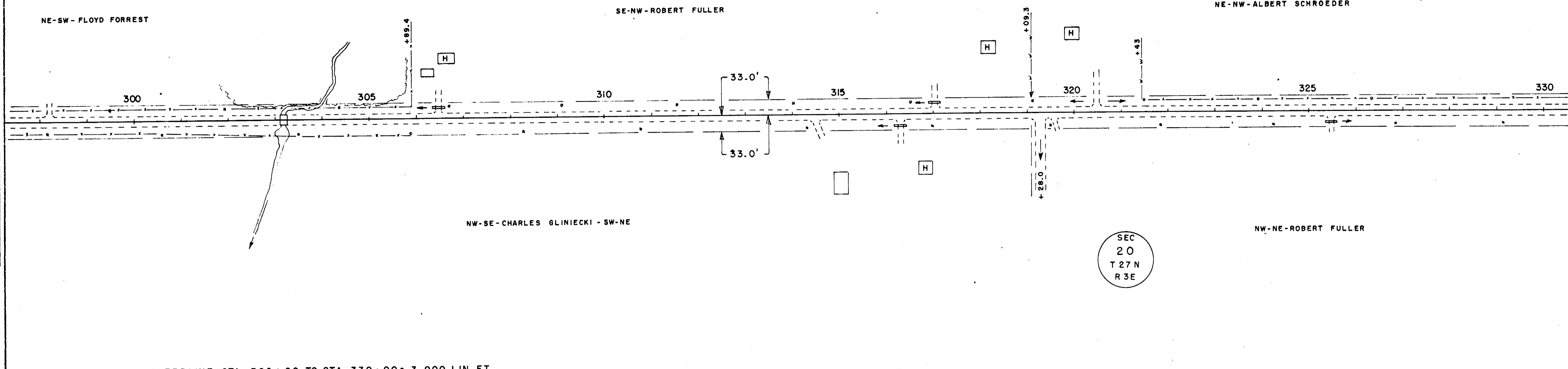
NOTE BOOK NO. PLOTTED ALIGNED CHECKED PT. OF WAY CHECKED

NOTE BOOK NO. PLOTTED CHECKED B.M. NOTED STRUCTURE NOTATIONS CHECKED

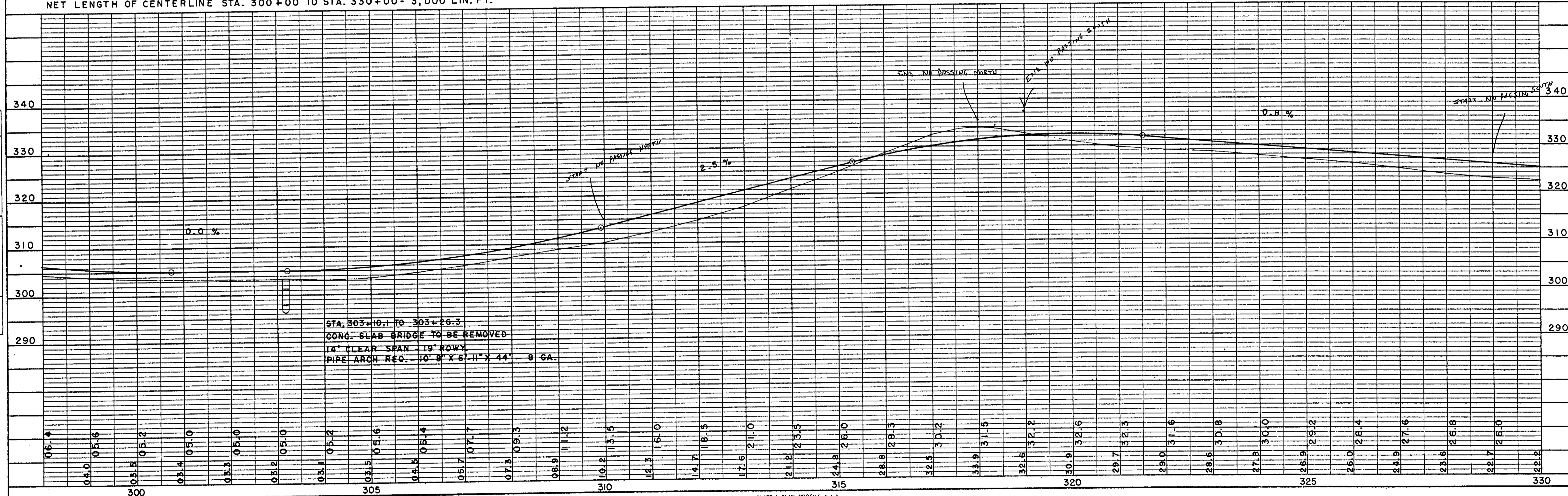
| BENCH MARKS | | | |
|-------------|--------|--------------------|--------------|
| 13 | 303+10 | TOP SW WING BRIDGE | 14' L 303.13 |
| 14 | 305+30 | SPIKE IN 10" ELM | 38' L 302.59 |
| 15 | 318+48 | " " 10" APPLE | 36' L 334.58 |

SEC
20
T 27N
R 3E

SEC
20
T 27N
R 3E



NET LENGTH OF CENTERLINE STA. 300+00 TO STA. 330+00 = 3,000 LIN. FT.



NOTE BOOK
 NO. 11-52
 PLOTTED
 ALIGNMENT CHECKED
 FT. OF WAY CHECKED

NOTE BOOK
 NO. 11-52
 GRADES CHECKED
 B. W. NOTED
 STRUCTURE NOTATIONS CHECKED