

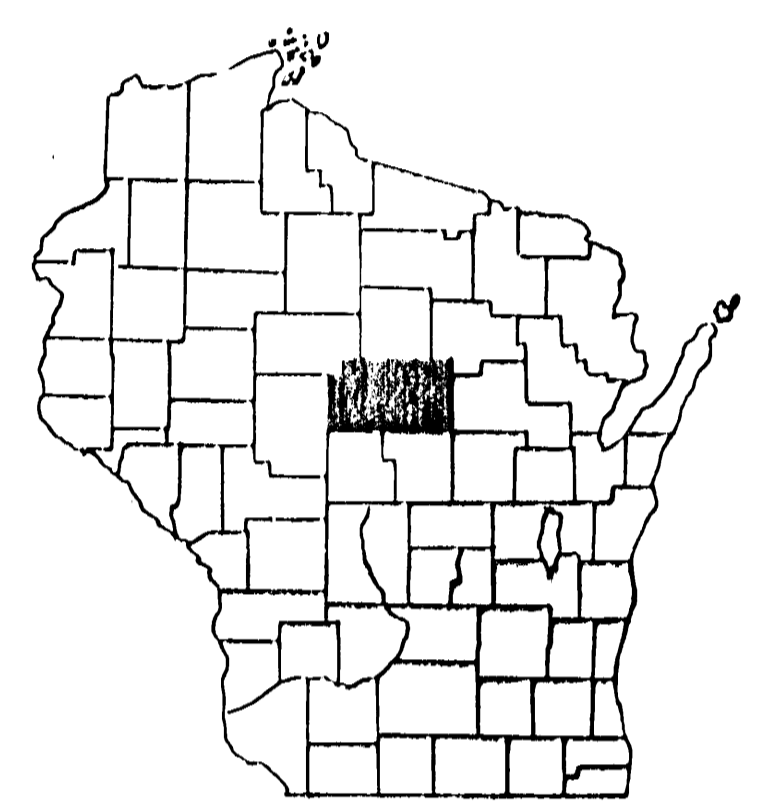
SCALLO
 PLAN: 1" = 100'
 PROFILE: HOR. 1" = 100' VERT. 1" = 10'

MARATHON COUNTY HIGHWAY DEPARTMENT

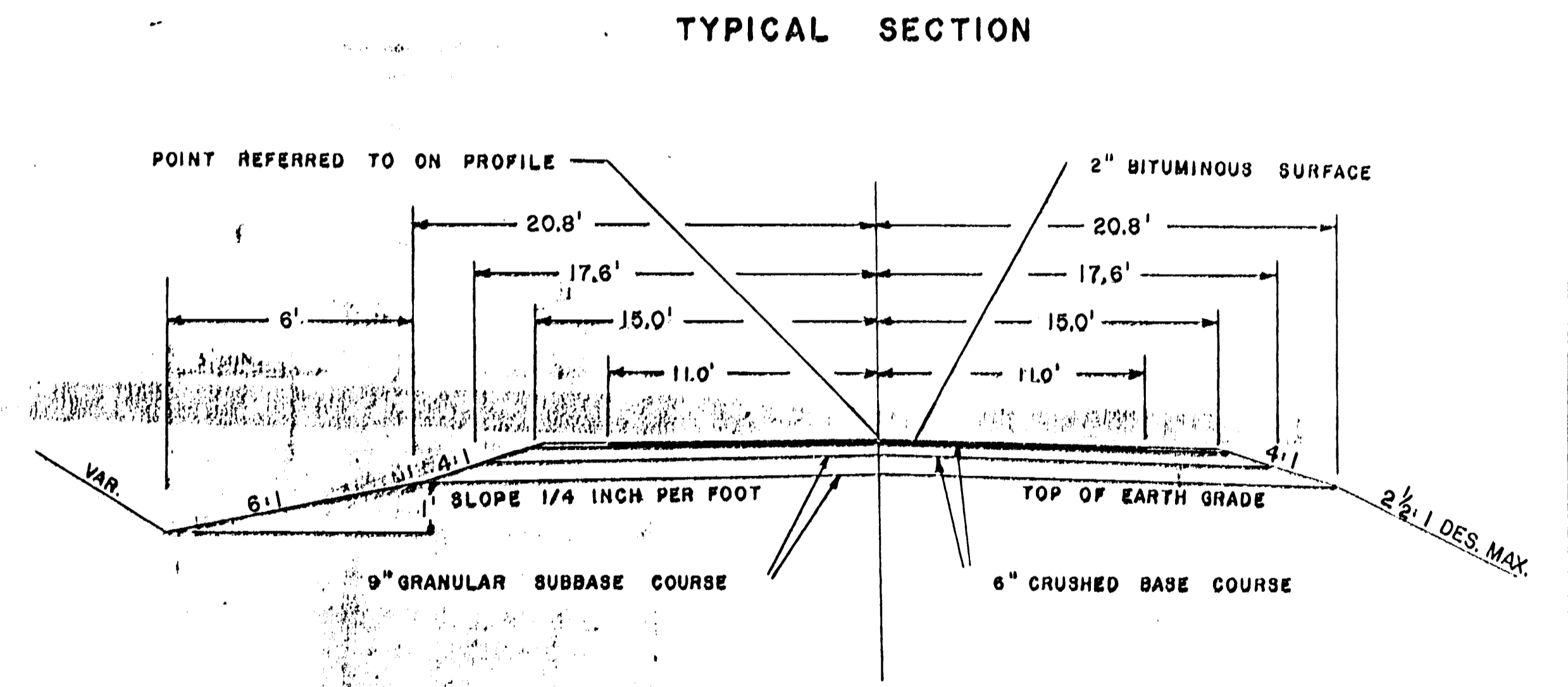
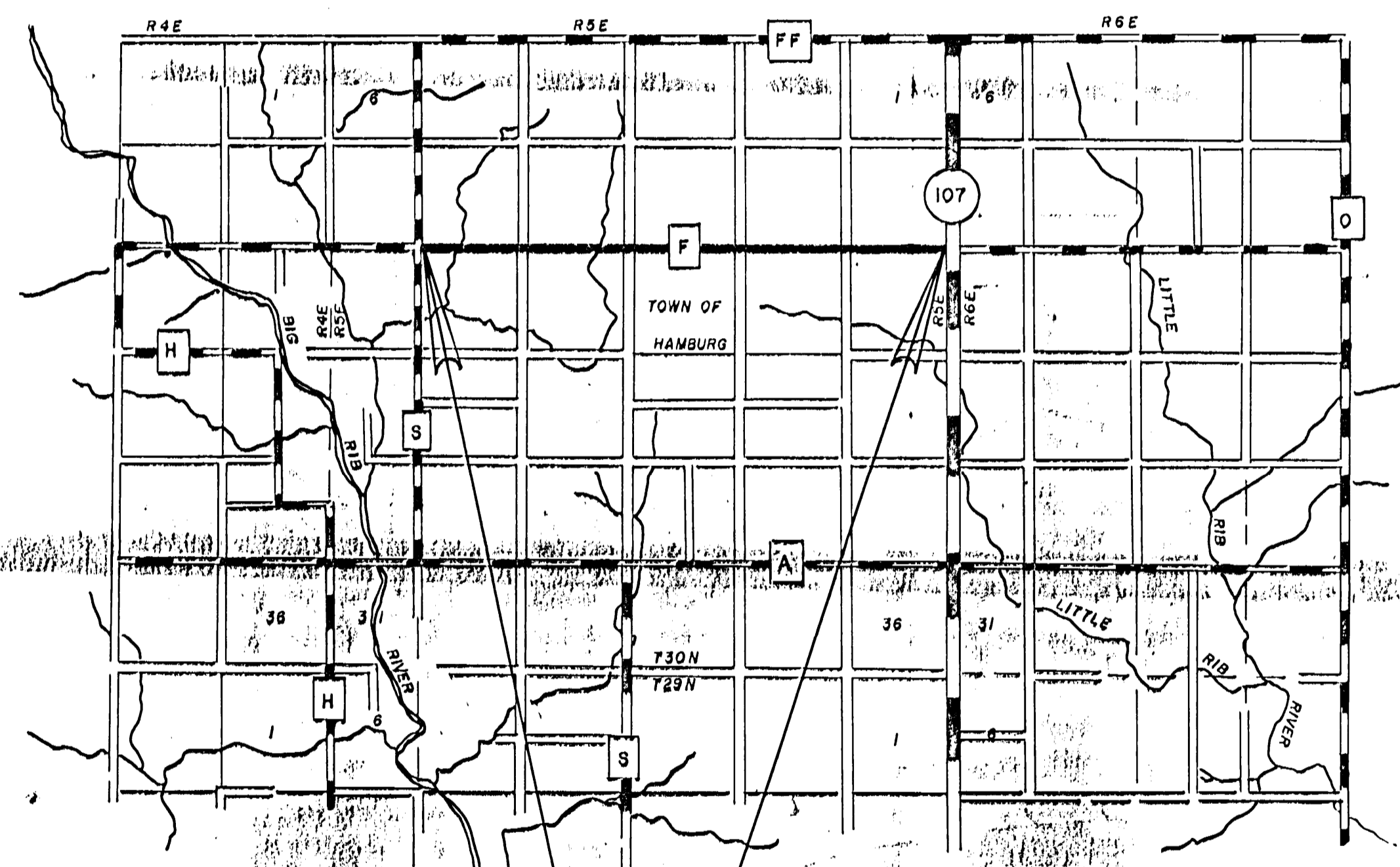
PLAN AND PROFILE OF PROPOSED

CTH "F"

CTH S - STH 107



MILTON	BEER	HALSEY	HAMBURG	BERLIN	WANE	TEAS	NEWITT	HANGMAN
HALL	JACKSON	WETMORE	RED FALLO	SETTIN	WASAU	EASTON	POYER	
BRANTON	FRANKFORT	WIS	CASSEL	MARSHMAN	RED MT.	WESTON	BAULE	MARBLE
SPENCER	MCALLAN	CLEVELAND	DEER VALLEY	WENDEL	WALTON	QUATMAN	REYER	FRANKLIN



LEGEND

NEW RIGHT-OF-WAY	—————
PRESENT RIGHT-OF-WAY	-----
PROPERTY LINE	— .L. — 878 —
WELL	⊞
TELEPHONE CABLE	— T — T —
POWER CABLE	— P — P —
GAS LINE	— G — G —
POWER POLE	⊞
TELEPHONE POLE	⊞
TELEPHONE PEDESTAL	⊞
GUY POLE	⊞
TRANSMISSION TOWER & LINE	⊞
FENCE	— X —
TRAVELED WAY	— X —

BEGINNING OF PROJECT
 JCT CTH S

END OF PROJECT
 JCT STH 107

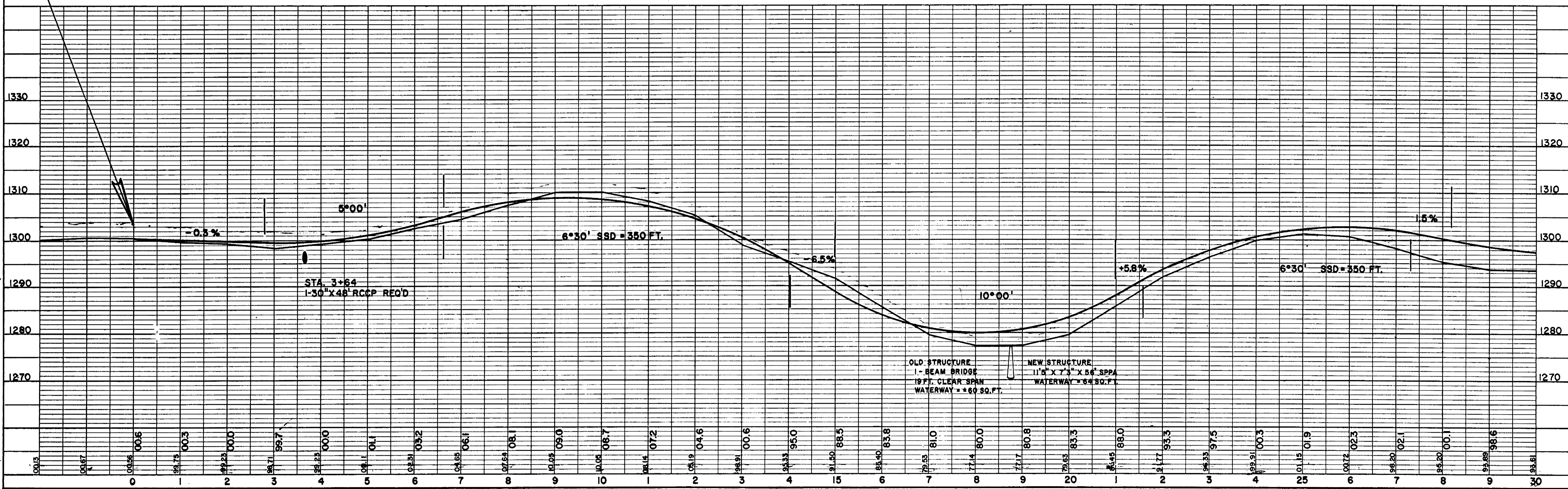
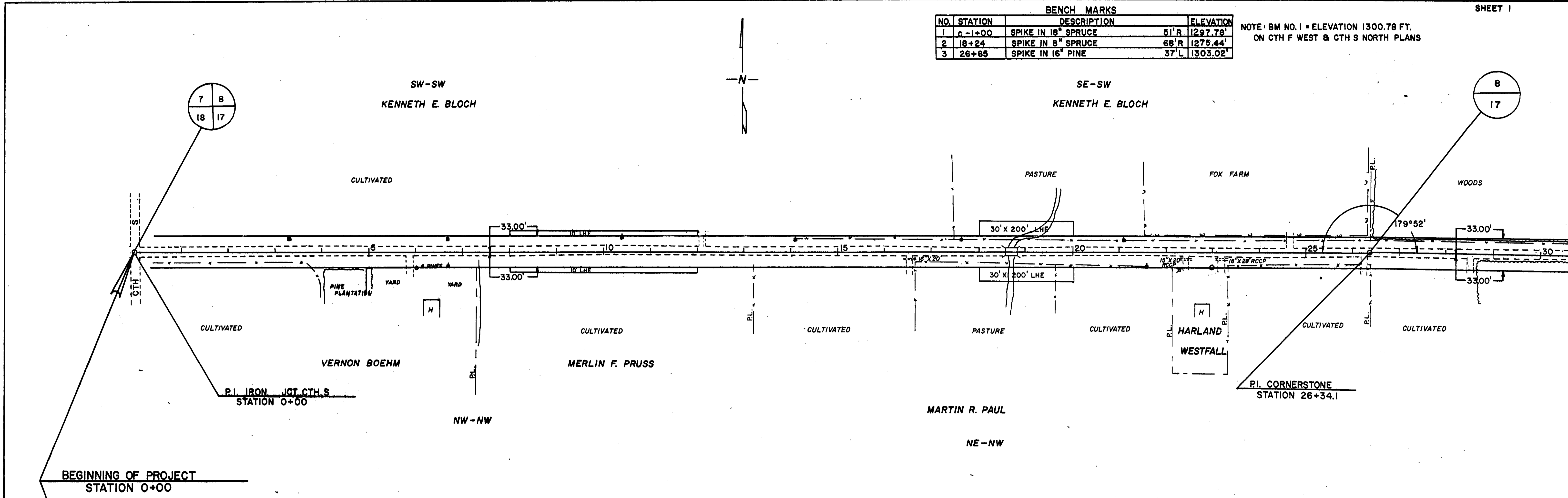
TOTAL LENGTH OF CENTERLINE = 5.002 MILES

BENCH MARKS			
NO.	STATION	DESCRIPTION	ELEVATION
1	0+00	SPIKE IN 18" SPRUCE	51' R 1297.78'
2	18+24	SPIKE IN 8" SPRUCE	68' R 1275.44'
3	26+65	SPIKE IN 16" PINE	37' L 1303.02'

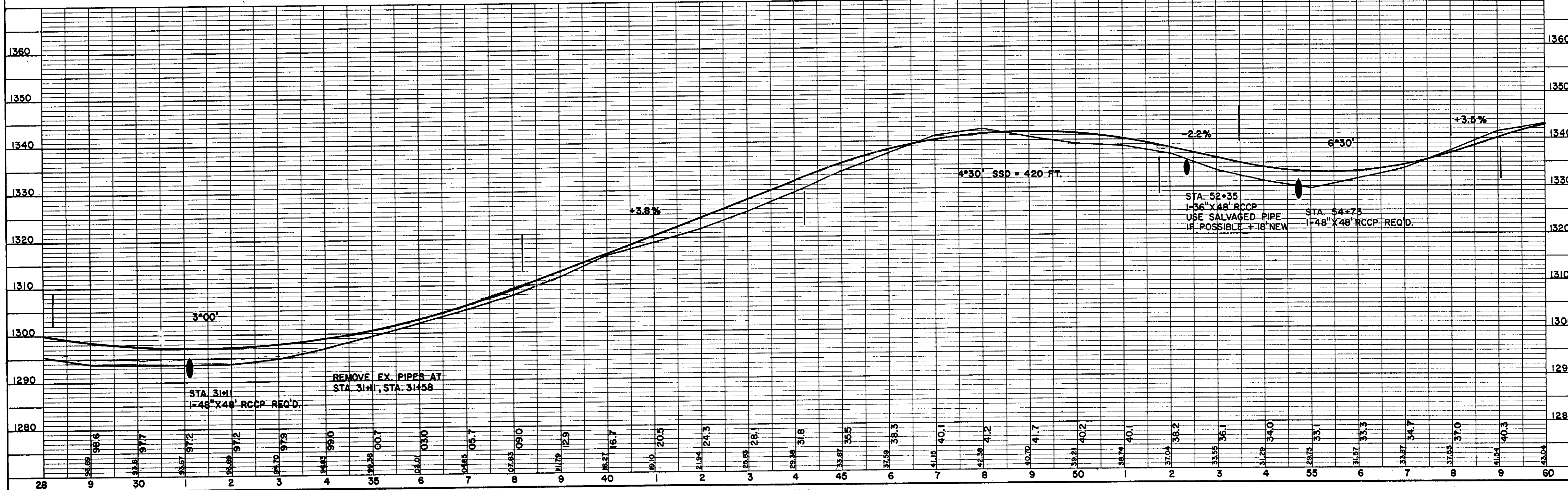
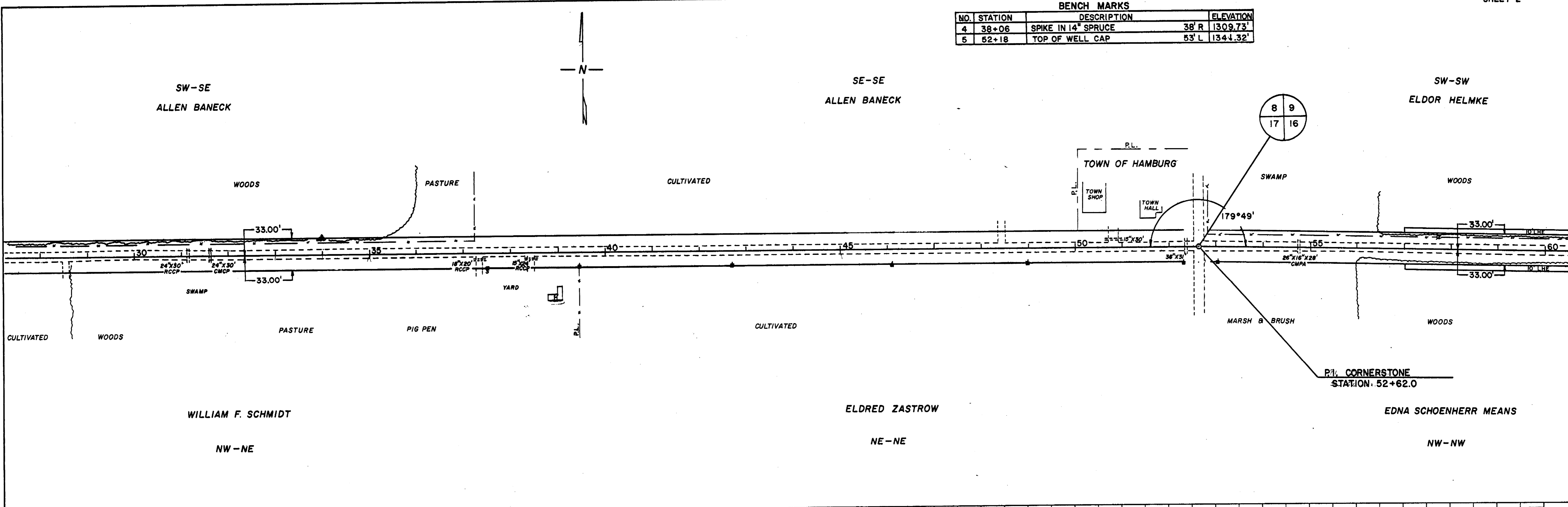
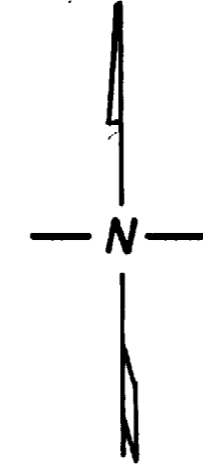
NOTE: BM NO. 1 = ELEVATION 1300.78 FT.
ON CTH F WEST & CTH S NORTH PLANS

PLAN
NOTE BOOK
ALIGNMENT CHECKED
NO.

PLAN
NOTE BOOK
GRADE CHECKED
NO.



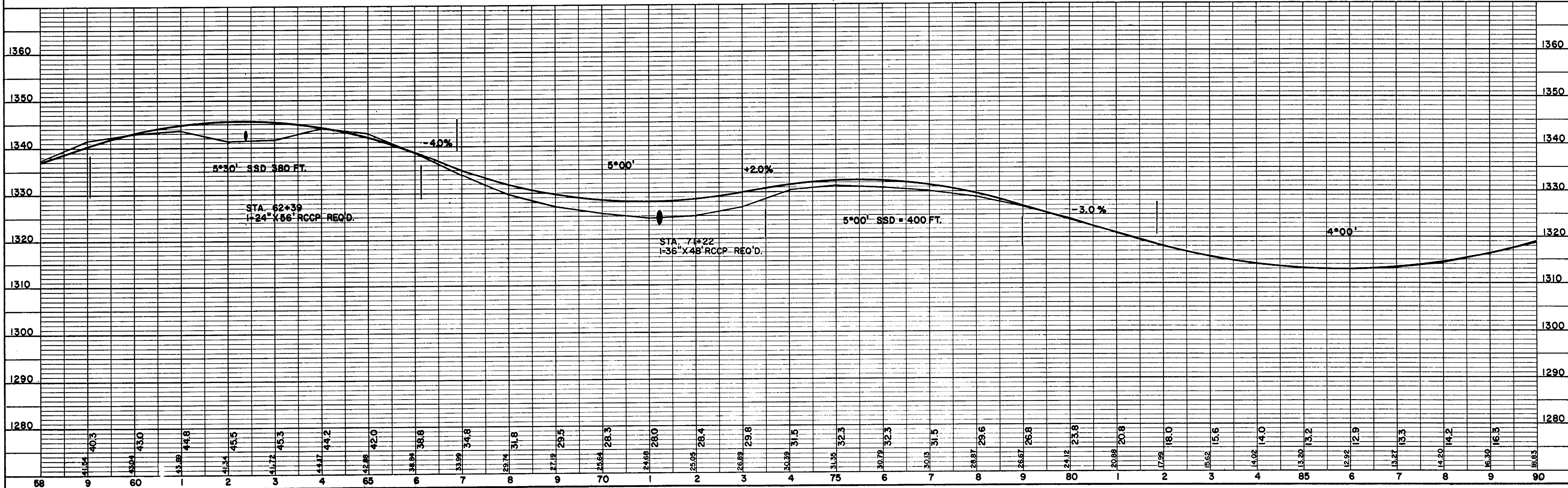
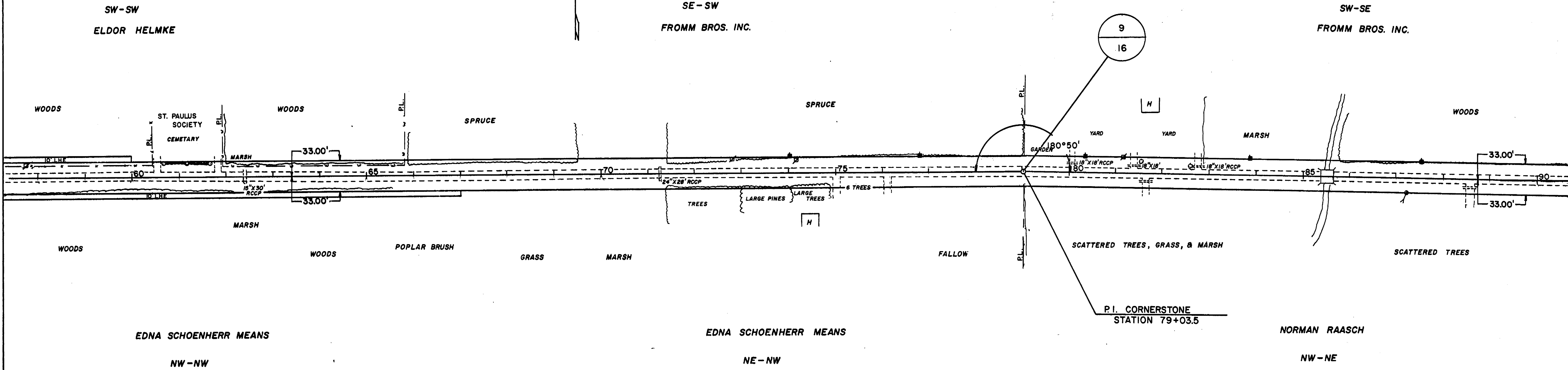
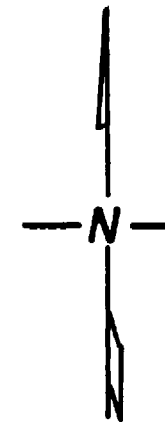
BENCH MARKS			
NO.	STATION	DESCRIPTION	ELEVATION
4	38+06	SPIKE IN 14" SPRUCE	38' R 1309.73'
5	52+18	TOP OF WELL CAP	53' L 1344.32'



SURVEYED BY: [blank]
 DRAWN BY: [blank]
 CHECKED BY: [blank]
 DATE: [blank]
 PROJECT: [blank]

SURVEYED BY: [blank]
 DRAWN BY: [blank]
 CHECKED BY: [blank]
 DATE: [blank]
 PROJECT: [blank]

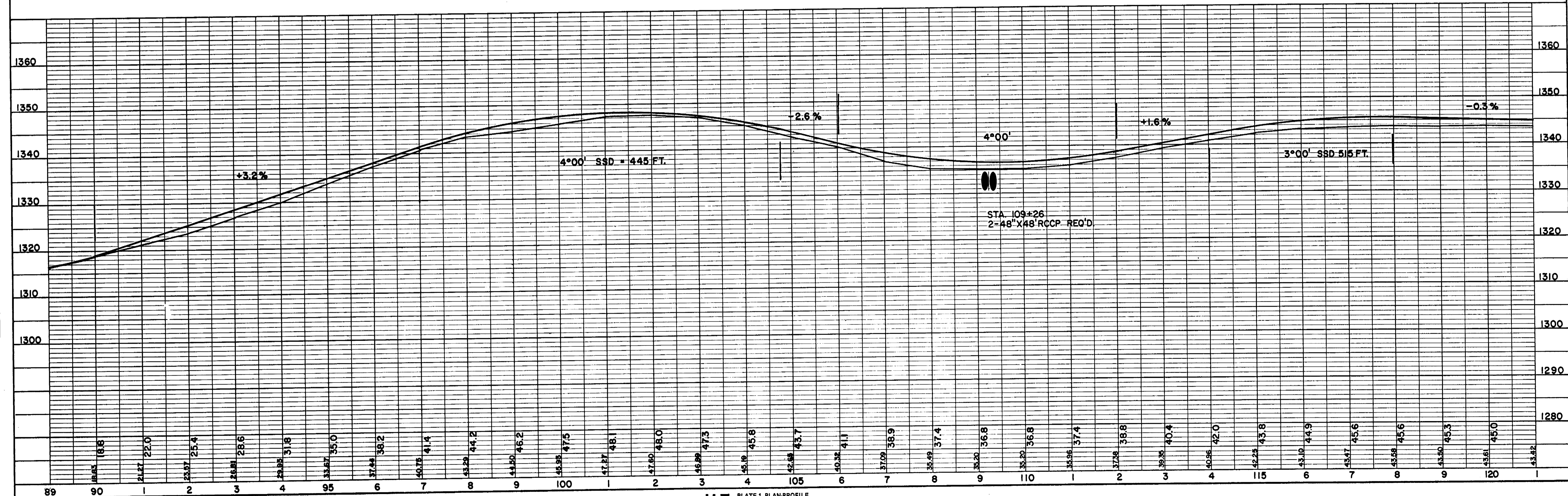
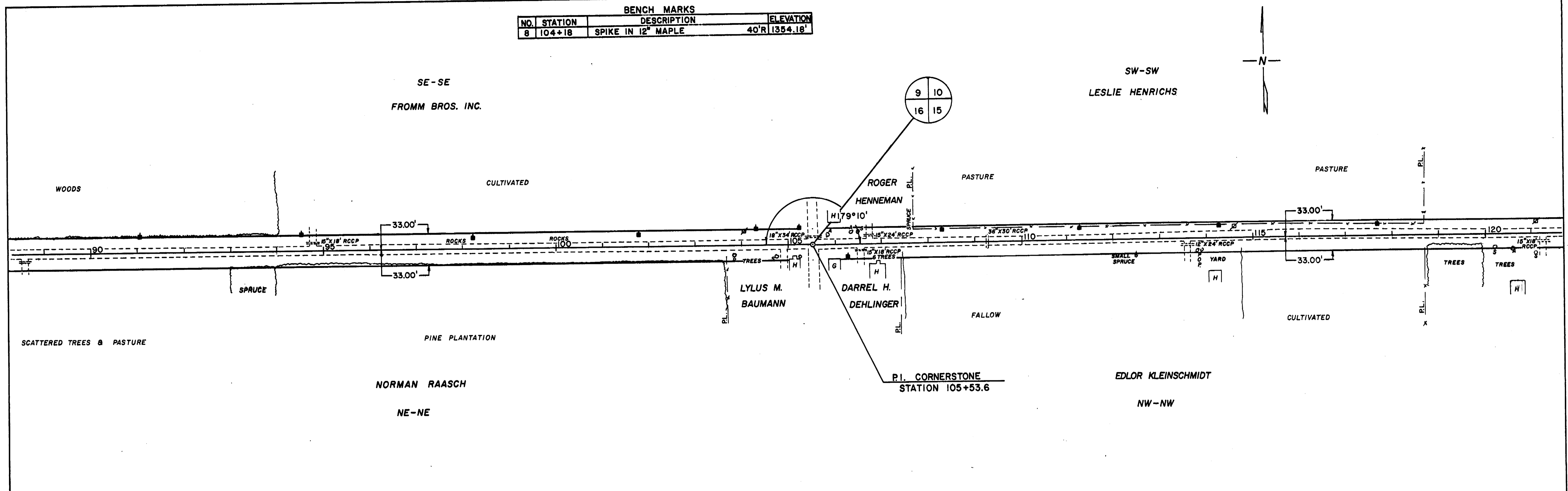
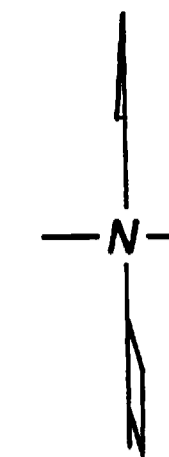
BENCH MARKS			
NO.	STATION	DESCRIPTION	ELEVATION
6	73+60	SPIKE IN 12" PINE	52'R 1326.90'
7	85+61	X ON SE CURB OF BRIDGE	1313.86'



1. PLAN
 2. PROFILE
 3. ALIGNMENT CHECKED
 4. GRADES CHECKED
 5. ELEVATIONS CHECKED
 6. NOTES
 7. DATE

1. PLAN
 2. PROFILE
 3. ALIGNMENT CHECKED
 4. GRADES CHECKED
 5. ELEVATIONS CHECKED
 6. NOTES
 7. DATE

BENCH MARKS			
NO.	STATION	DESCRIPTION	ELEVATION
8	104+18	SPIKE IN 12" MAPLE	40'R 1354.18'



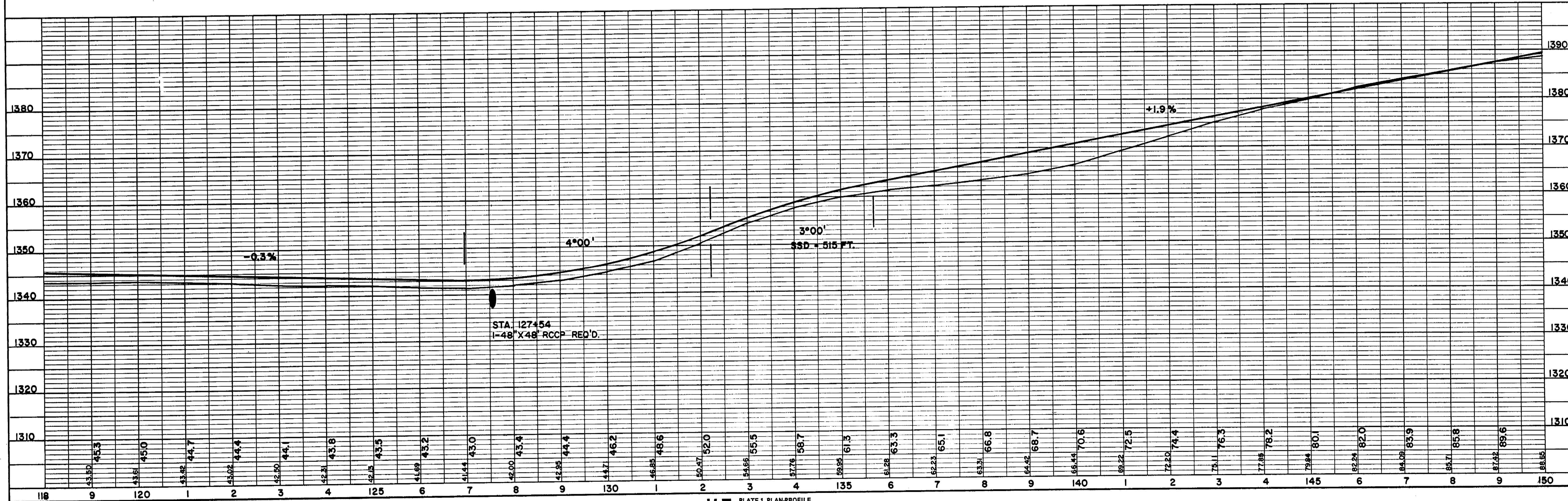
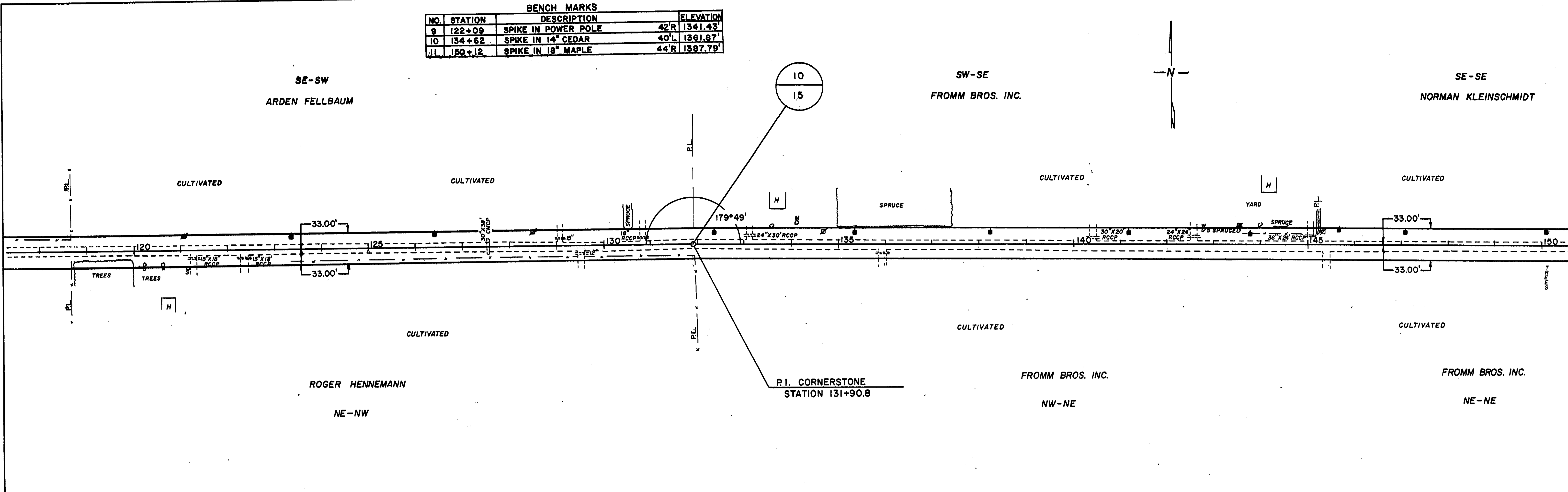
PLAN
 PLOTTED
 ALIGNMENT CHECKED
 NOTE BOOK
 NO.

PROFILE
 GRADES CHECKED
 A. M. S. NOTES
 STRUCTURE NOTATIONS CHECKED
 NOTE BOOK
 NO.

BENCH MARKS			
NO.	STATION	DESCRIPTION	ELEVATION
9	122+09	SPIKE IN POWER POLE	42'R 1341.43'
10	134+62	SPIKE IN 14" CEDAR	40'L 1361.87'
11	150+12	SPIKE IN 18" MAPLE	44'R 1387.79'

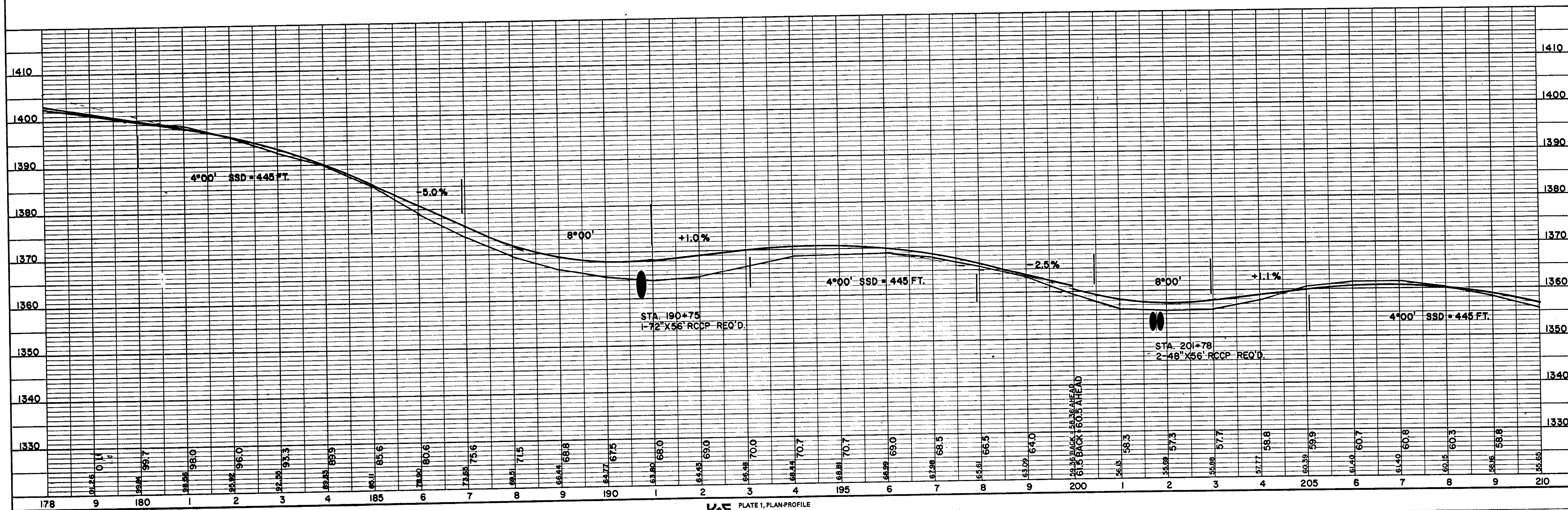
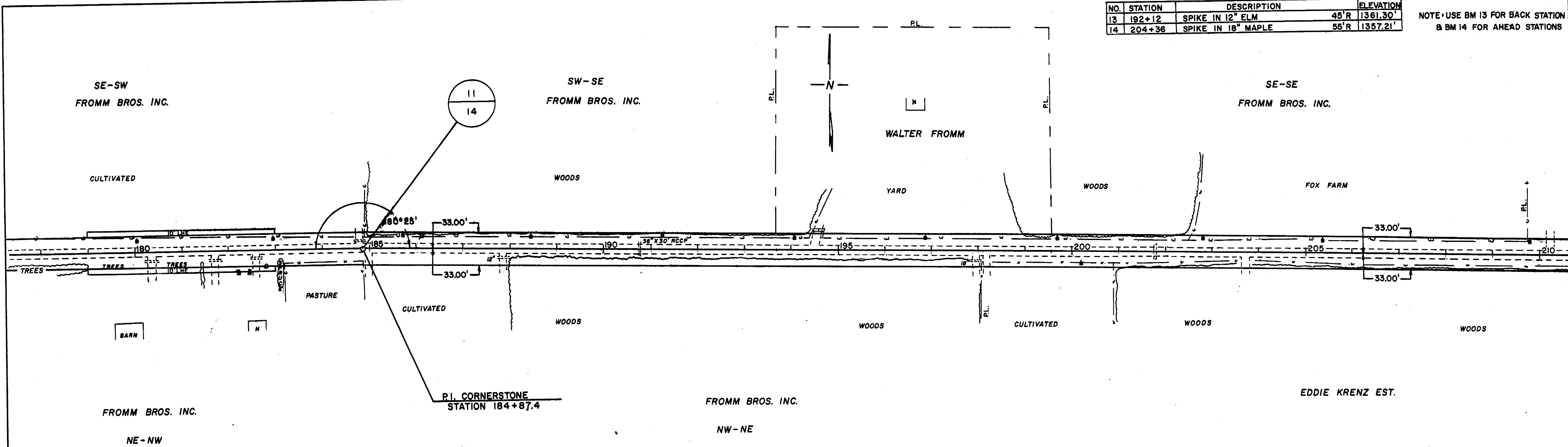
PLAN
 DATE: 10/1/88
 DRAWN BY: J. H. HENNING
 CHECKED BY: J. H. HENNING
 NO. 1

PROFILE
 DATE: 10/1/88
 DRAWN BY: J. H. HENNING
 CHECKED BY: J. H. HENNING
 NO. 1



NO.	STATION	BENCH MARKS DESCRIPTION	ELEVATION
13	192+12	SPIKE IN 12" ELM	45'R 1361.30'
14	204+36	SPIKE IN 18" MAPLE	55'R 1357.21'

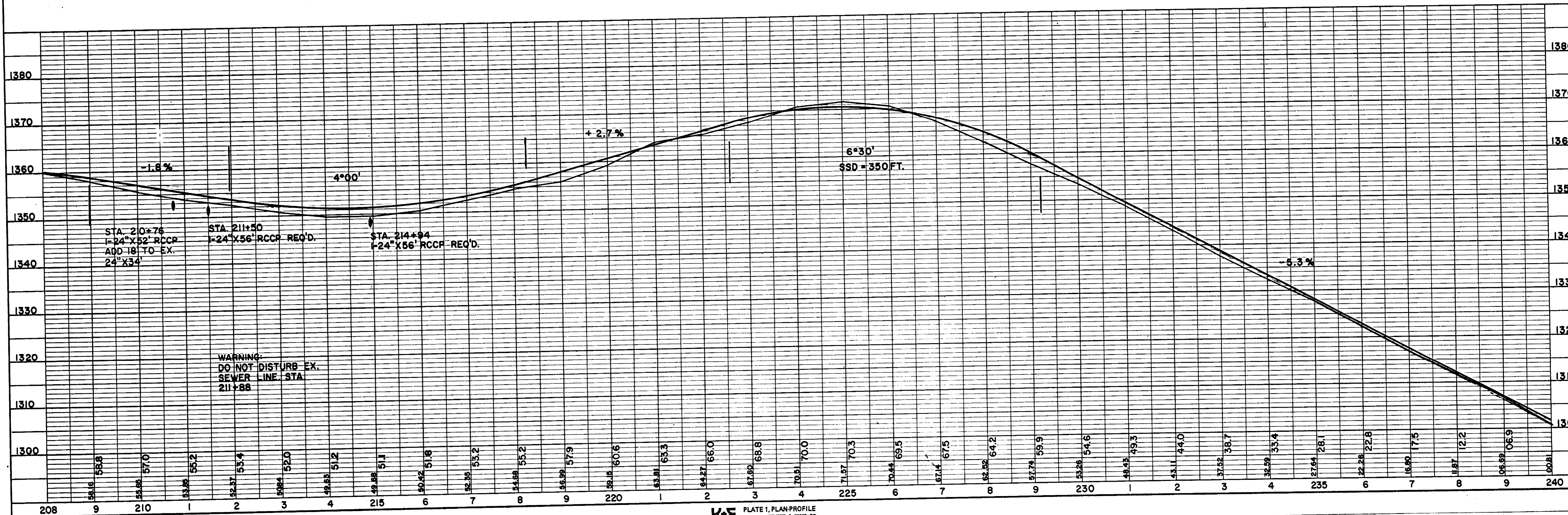
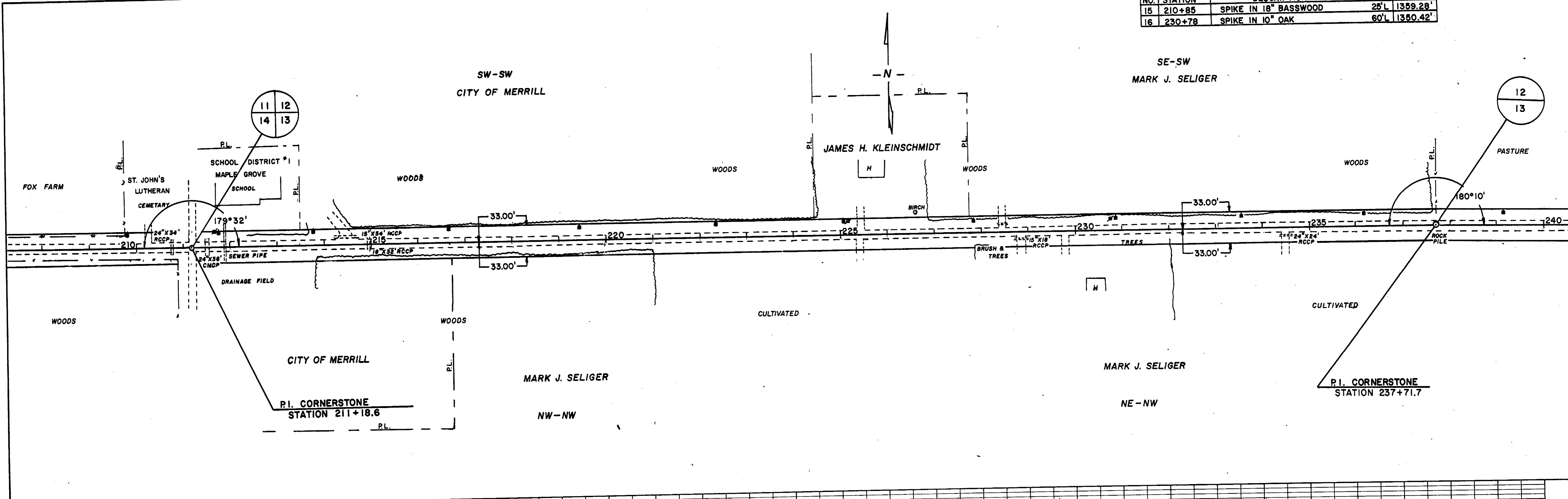
NOTE: USE BM 13 FOR BACK STATION & BM 14 FOR AHEAD STATIONS



SURVEYOR
 F. PLAN
 NOTE BOOK
 No.

SURVEYOR
 F. PLAN
 NOTE BOOK
 No.

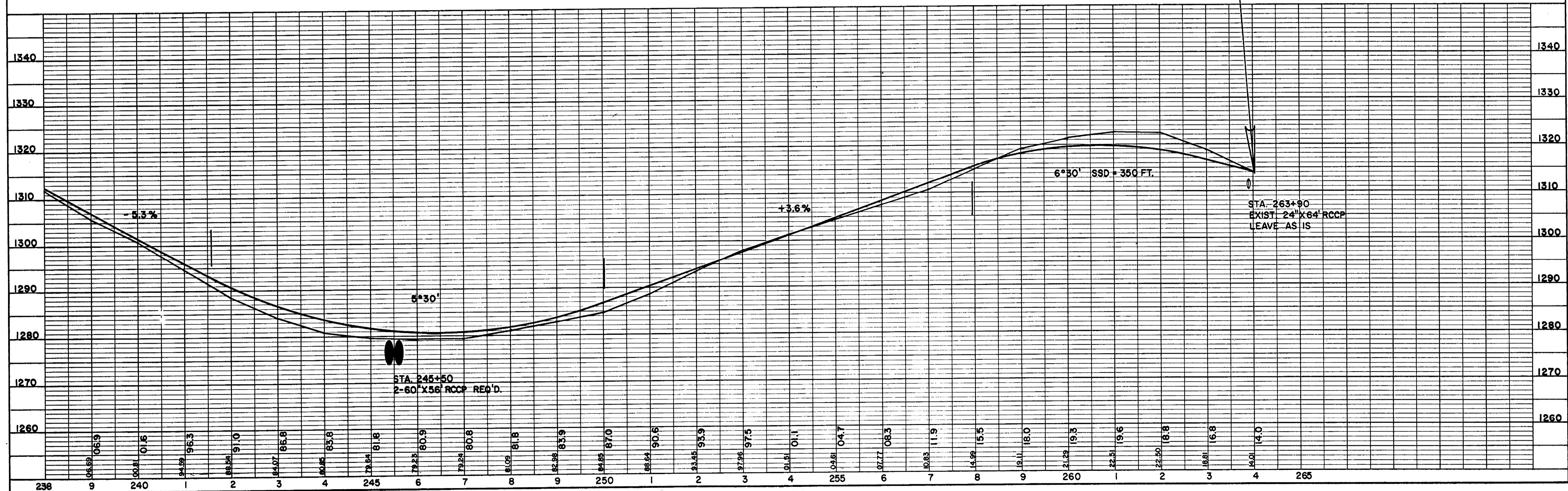
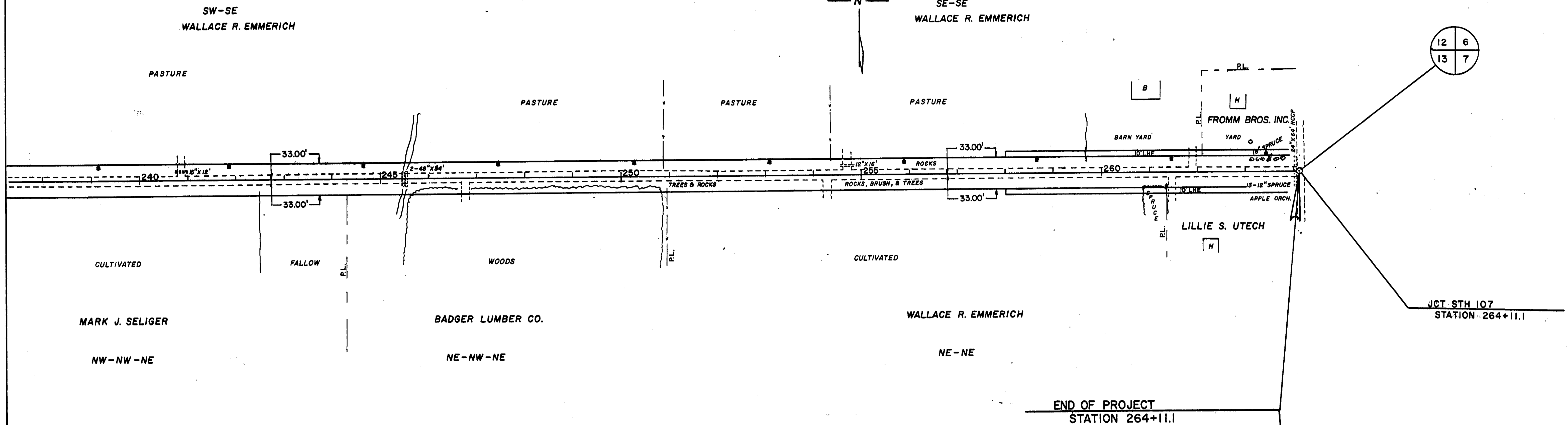
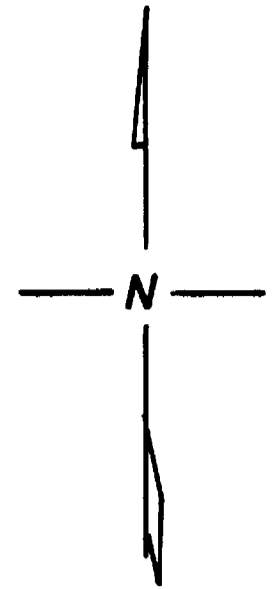
BENCH MARKS			
NO.	STATION	DESCRIPTION	ELEVATION
15	210+85	SPIKE IN 18" BASSWOOD	25'L 1359.28'
16	230+78	SPIKE IN 10" OAK	60'L 1350.42'



PLANNED
 NOTED
 ALIGNMENT CHECKED
 ST. OF WAY CHECKED
 NO.

PLANNED
 NOTED
 GRADE CHECKED
 STRUCTURE LOCATIONS CHECKED
 NO.

BENCH MARKS			
NO.	STATION	DESCRIPTION	ELEVATION
17	246+10	SPIKE IN 16" WILLOW	40'L 1277.70'
18	261+90	SPIKE IN 8" SPRUCE	45'R 1322.87'



SURVEYED
 1" HORIZ.
 NOTE BOOK
 NO.

SURVEYED
 1" HORIZ.
 NOTE BOOK
 NO.