

FED. ROAD DIST. NO.	STATE	PROJ. NO.	SHEET NO.
4	WIS.		19

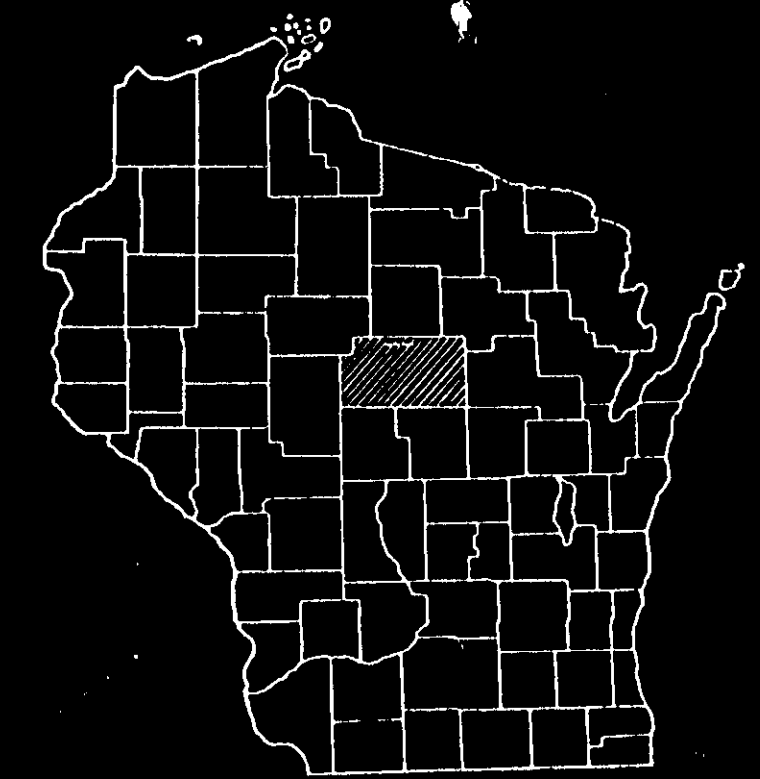
DIVISION JOB NO.

**INDEX OF SHEETS**

SHEET NO. 1	TITLE
SHEET NO.	TYPICAL CROSS SECTIONS
SHEET NO.	ESTIMATE OF QUANTITIES
SHEET NO.	MISCELLANEOUS QUANTITIES
SHEET NO.	RIGHT OF WAY PLAT
SHEET NO. 2-9	PLAN AND PROFILE STA. 0+33 TO STA. 194A+62
SHEET NO.	STANDARD DETAILS
SHEET NO.	DRAINAGE STRUCTURES
SHEET NO.	CROSS SECTIONS

STATE OF WISCONSIN  
**STATE HIGHWAY COMMISSION OF WISCONSIN**

PLAN AND PROFILE OF PROPOSED  
**S.T.H. 107—U.S.H. 51**  
 MARATHON COUNTY  
 PROJECT S 0592(2)

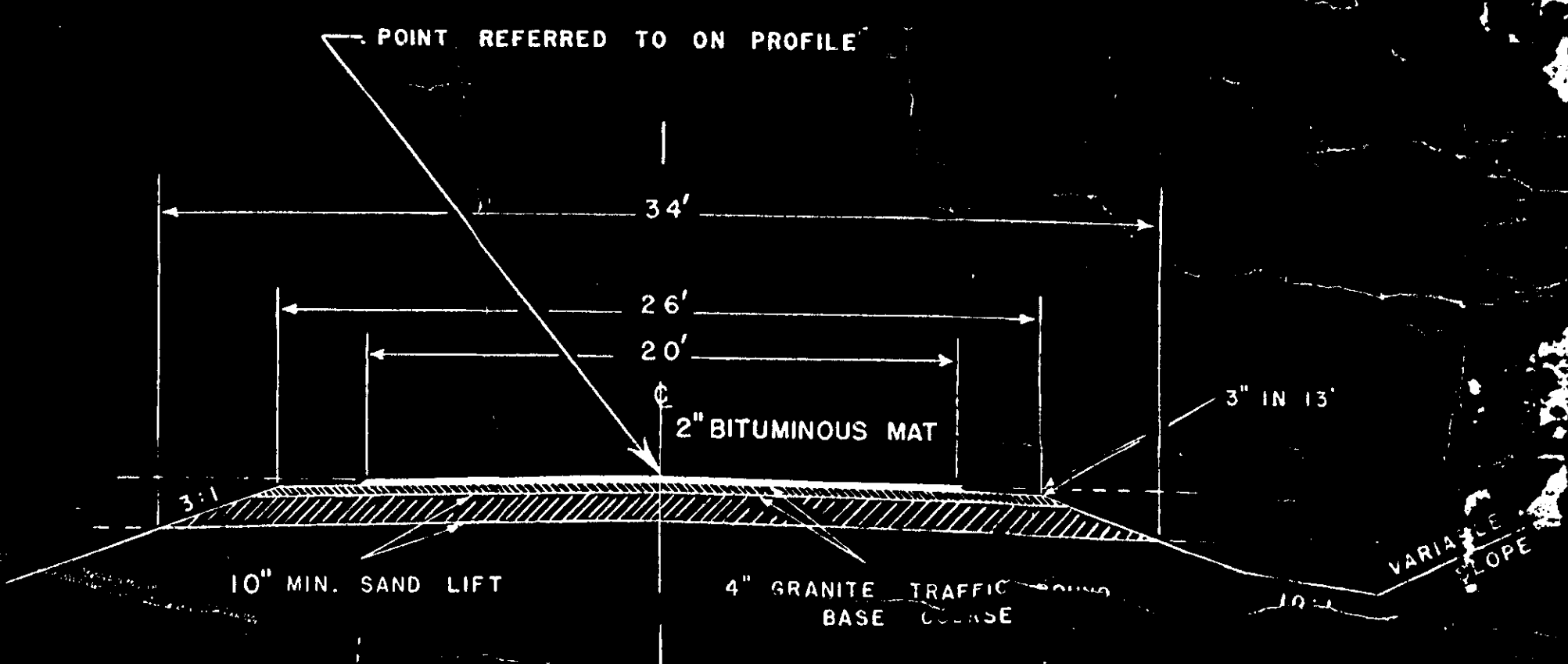
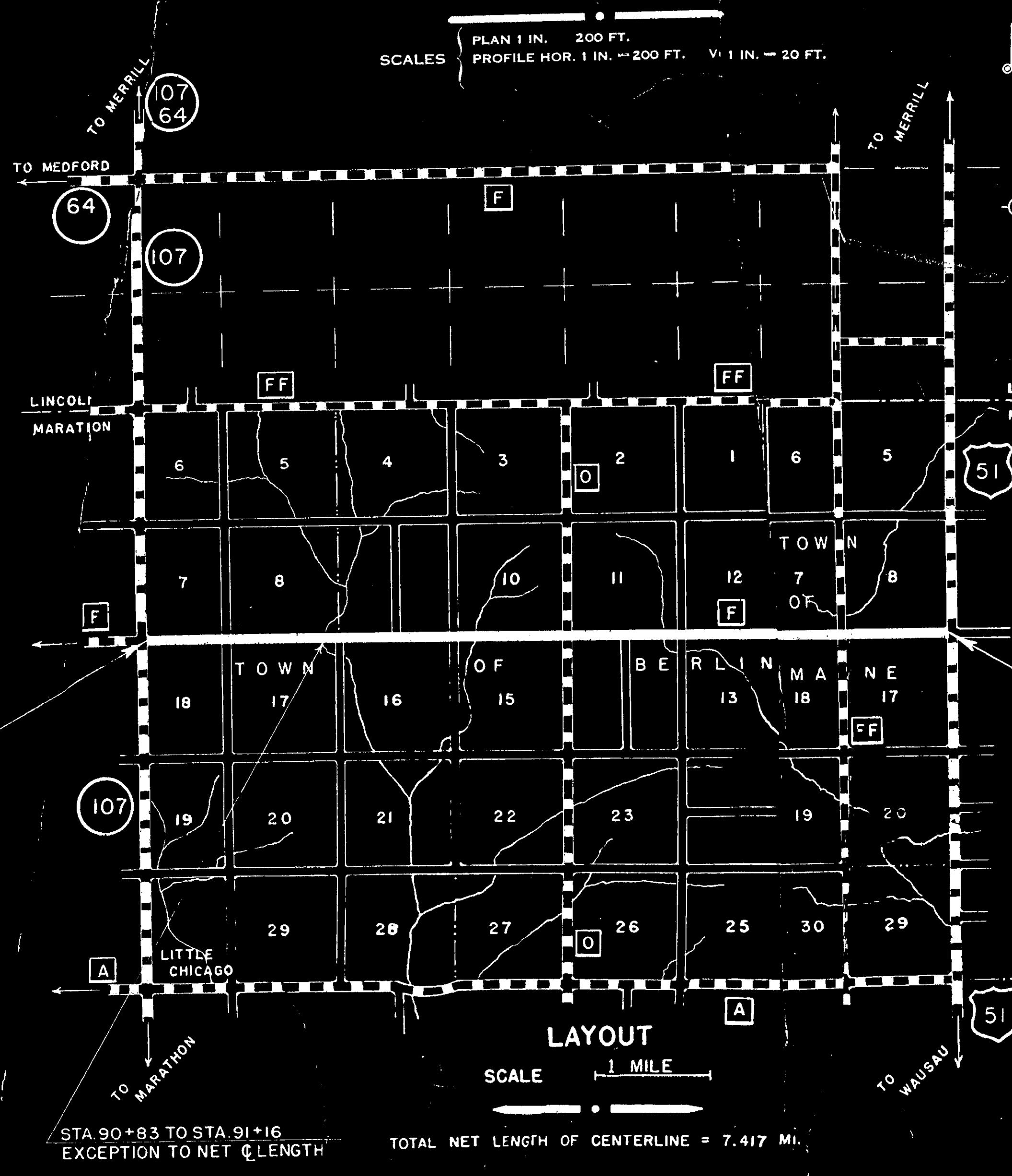


CONTRACT NO. 1

THIS PROJECT IS TO BE EXECUTED UNDER THE STANDARD SPECIFICATIONS FOR ROAD AND BRIDGE CONSTRUCTION OF THE STATE HIGHWAY COMMISSION OF WISCONSIN - EDITION OF 1941 APPROVED AS STANDARD SEPTEMBER 26, 1941; FEDERAL AID SPECIAL PROVISIONS APPROVED AS STANDARD NOVEMBER 8, 1948, AND SPECIAL PROVISIONS AS ATTACHED TO PROPOSALS.

ESTIMATE OF QUANTITIES

ITEM NO.	QUANTITY	UNIT	ITEM
2110 - 1	40800	CU.YD.	SAND-GRAVEL FILL
	13400	CU.YD.	DISINTEGRATED GRANITE BASE
2311 - 1	24000	GAL.	BITUMINOUS MATERIAL - PRIME COAT
2312 - 3	109000	GAL.	BIT. MAT. SURFACE COURSE & TACK COAT
2313 - 1	87000	SQ.YD.	WEAVING SURFACE - GR. AGG. ROAD MIX
2313 - 3	6900	CU.YD.	AGGREGATE - GR. AGG. BIT. SURFACE COURSE



BEGINNING OF PROJECT S 0592 (2)  
 STATION 0+33

END OF PROJECT S 0592 (2)  
 STATION 194A+62

**CONVENTIONAL SIGNS**

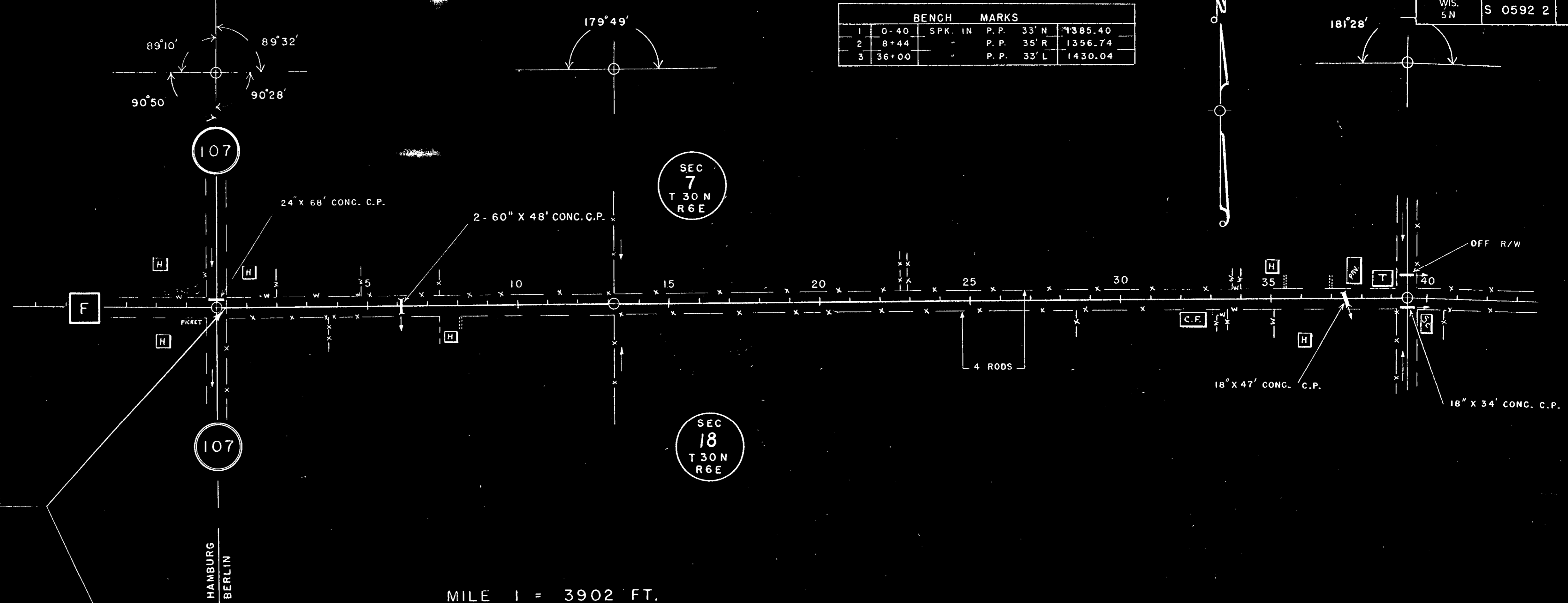
STATE LINE	-----	CULVERTS IN PLACE	-----
COUNTY LINE	-----	CULVERTS REQUIRED	-----
TOWNSHIP OR RANGE LINE	-----	DROP INLET	-----
SECTION LINE	-----	POWER POLE	-----
NEW RIGHT OF WAY LINE	-----	TELEPHONE OR TELEGRAPH POLE	-----
PRESENT RIGHT OF WAY LINE	-----	RIGHT OF WAY MARKERS	-----
WIRE FENCE {WOVEN	-----	REFERENCE STAKE FOR HUBS ONLY	-----
{BARBED	-----	MARSH	-----
LOT LINE	-----	HEDGE	-----
CORPORATE OR CITY LIMITS	-----	TREES	-----
PROPERTY LINE	-----	GROUND ELEVATION	DATUM LINE
TRAVELED WAY OR P.E.	-----	GRADE ELEVATION	DATUM LINE
RAILROADS	-----		
BASE OR SURVEY LINE	-----		

STA. 90+83 TO STA. 91+16  
 EXCEPTION TO NET LENGTH  
 TOTAL NET LENGTH OF CENTERLINE = 7.417 MI.

STATE HIGHWAY COMMISSION OF WISCONSIN MARATHON COUNTY		PUBLIC WORKS AGENCY PUBLIC WORKS ADMINISTRATION	
SURVEYOR C. E. C.	NOTE BOOK	RECOMMENDED FOR APPROVAL	
DIVISION COMPUTER	IN. & CHECKER	DISTRICT ENGINEER	
DIVISION CHECKER C. S. P.	CORRECT	PUBLIC WORKS AGENCY	
CORRECT	DATE 19__	APPROVED	
DESIGN ENGINEER	DIVISION ENGINEER	DISTRICT ENGINEER	
RECOMMENDED FOR APPROVAL	DATE 19__	PUBLIC WORKS AGENCY	
CONSTRUCTION ENGINEER	DATE 19__	APPROVED	
APPROVED	DATE 19__	DISTRICT ENGINEER	
		PUBLIC WORKS AGENCY	

P.R.A. DISTRICT OFFICE	PROJECT	SHEET NUMBER	TOTAL SHEETS
WIS. 5 N	S 0592 2	2	9

BENCH MARKS			
1	0+40	SPK. IN	P.P. 33' N 1385.40
2	8+44	"	P.P. 35' R 1356.74
3	36+00	"	P.P. 33' L 1430.04

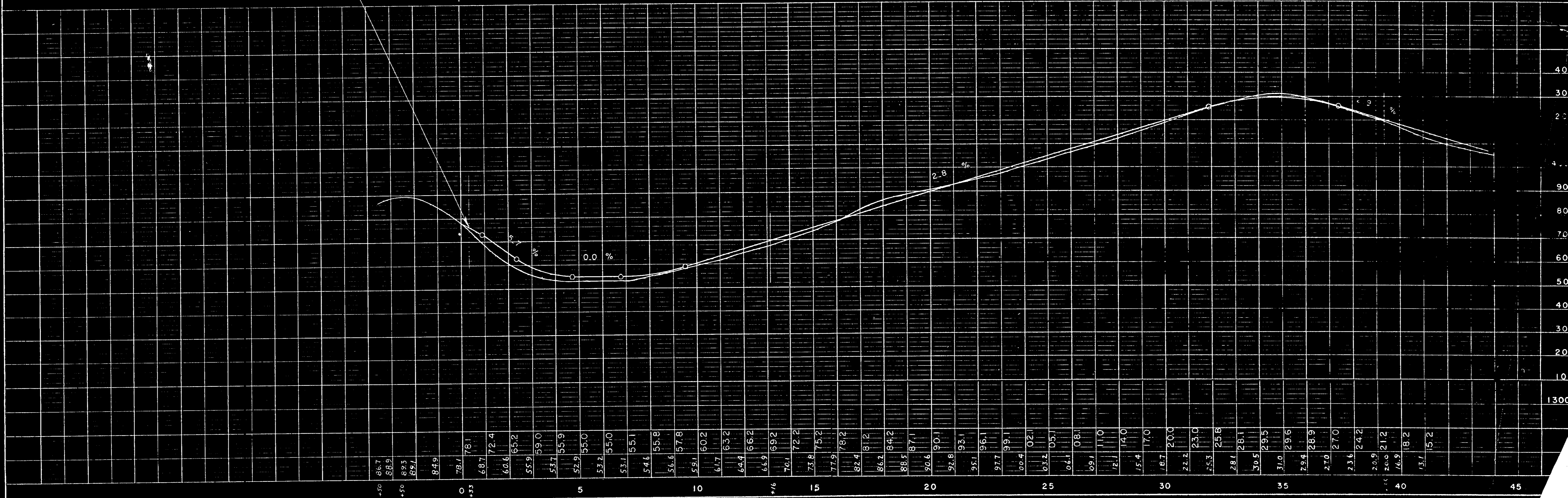


BEGINNING OF PROJECT S 0592 2  
STATION 0+33.0

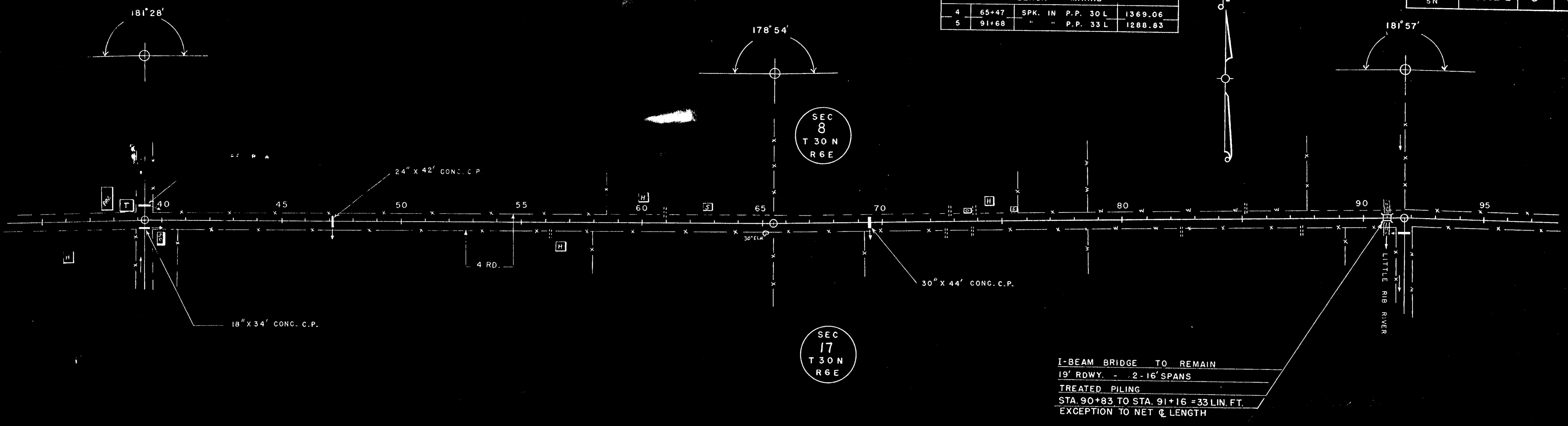
MILE 1 = 3902 FT.

PLAN	DATE	BY	CHKD.
NO.	11-49	C	C
NOTE BOOK			
ALIGNMENT CHECKED			
RT. OF WAY CHECKED			

PROFILE	DATE	BY	CHKD.
NO.	11-49	C	C
NOTE BOOK			
GRADES CHECKED			
STRUCTURE NOTATIONS CHECKED			

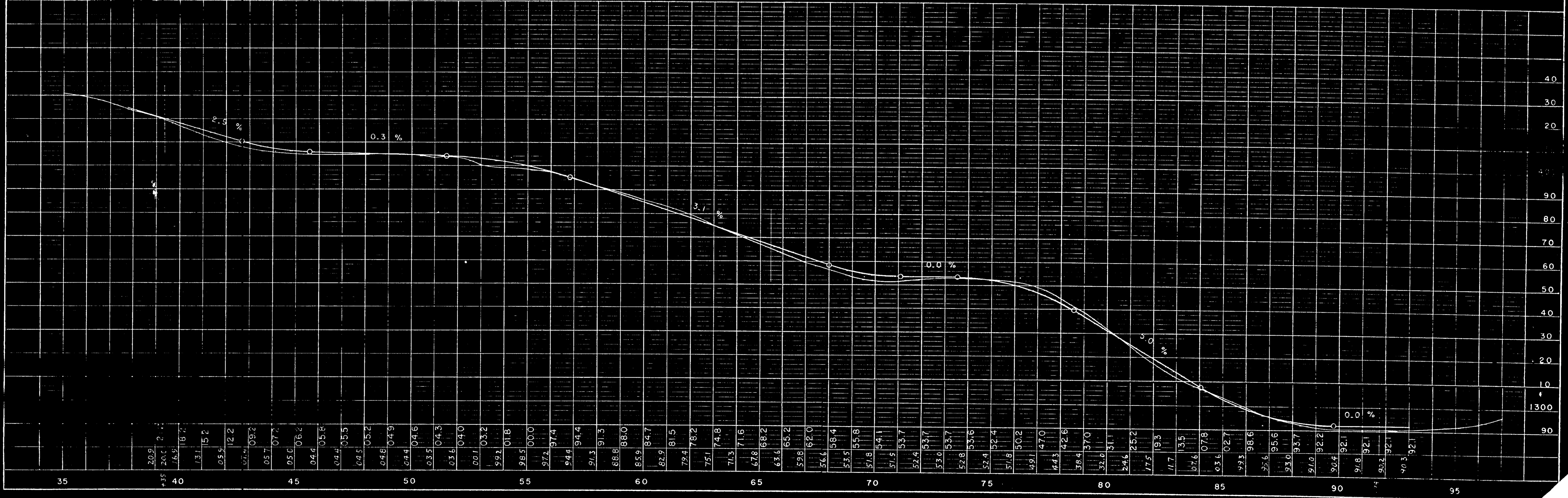


BENCH MARKS			
4	65+47	SPK. IN P.P. 30 L	1369.06
5	91+66	" " P.P. 33 L	1288.83



I-BEAM BRIDGE TO REMAIN  
 19' RDWY. - 2-16' SPANS  
 TREATED PILING  
 STA 90+83 TO STA. 91+16 = 33 LIN. FT.  
 EXCEPTION TO NET  $\phi$  LENGTH

MILE 2 = 5239 FT.

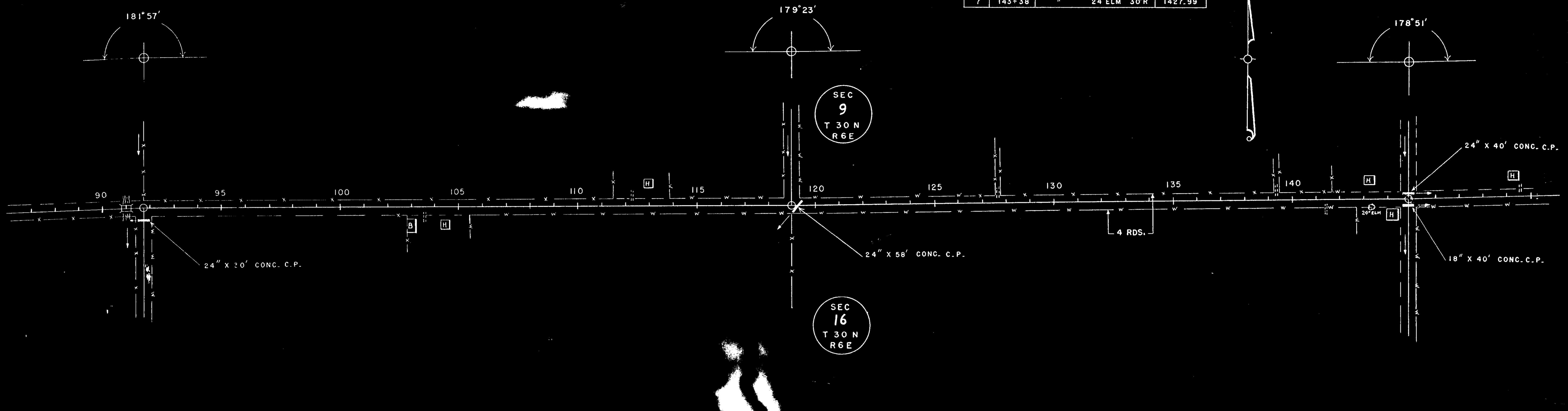


PLAN SURVEYED  
 NOTE BOOK NO. 100  
 ALIGNED CHECKED BY M.A. 1/10/40

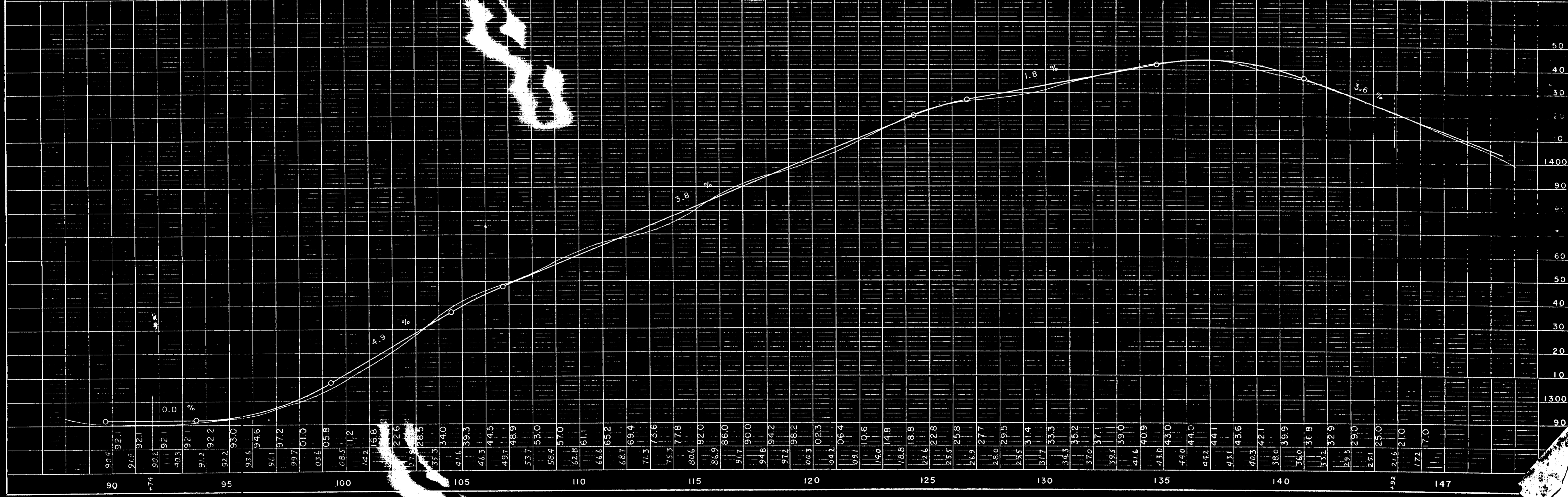
PROFILE SURVEYED  
 NOTE BOOK NO. 100  
 B.M. NOTED BY M.A. 1/10/40  
 STRUCTURE NOTATIONS: + + +

P.R.A. DISTRICT OFFICE	PROJECT	SHEET NUMBER	TOTAL SHEETS
WIS. 5N	S 0592 2	4	9

BENCH MARKS		SPK. IN	P.P.	30'L	1397.27
6	118+78	"	24" ELM	30'R	1427.99
7	143+38	"	"	"	"



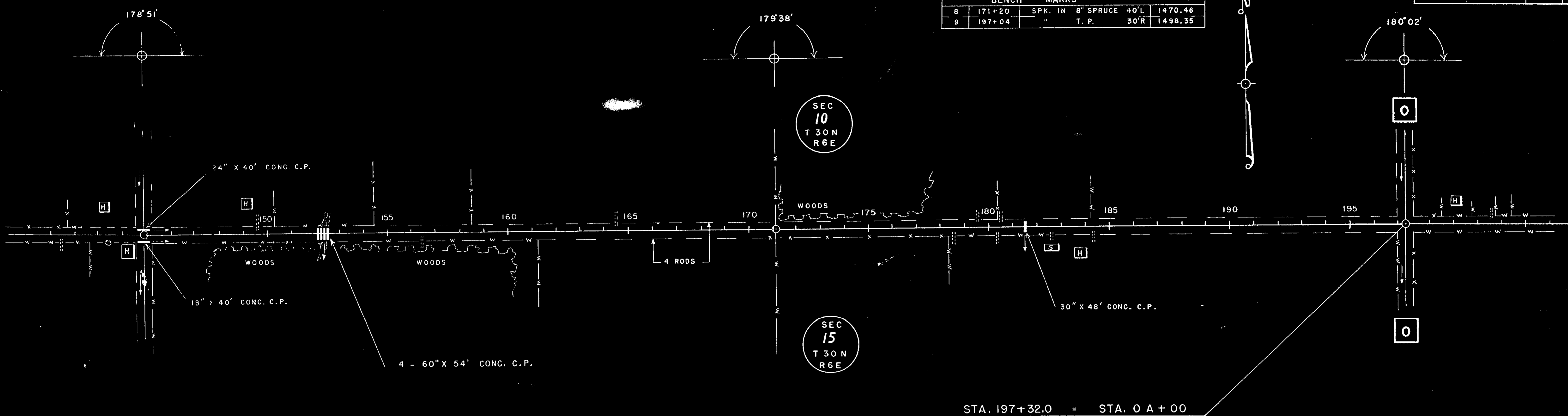
MILE 3 = 5318 FT.



PLAN SURVEYED, PLOTTED, CHECKED, BY: [Name]  
NOTE BOOK NO. [Number]

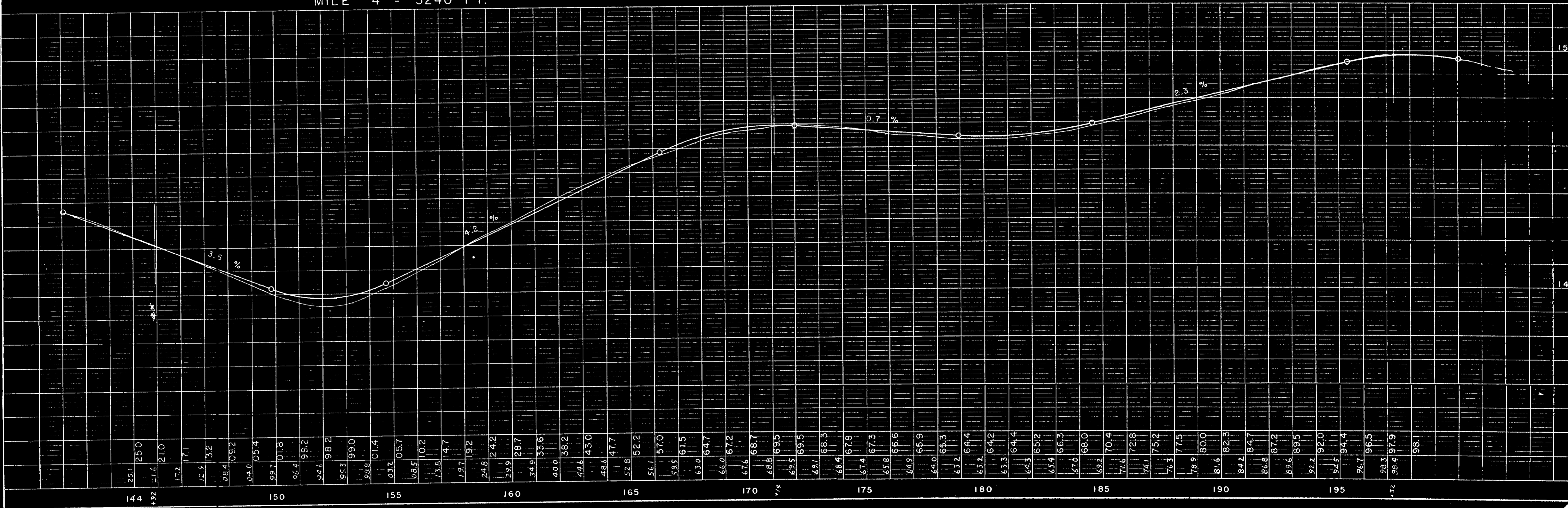
PROFILE SURVEYED, PLOTTED, CHECKED, BY: [Name]  
NOTE BOOK NO. [Number]

BENCH MARKS			
8	171+20	SPK. IN 8" SPRUCE 40'L	1470.46
9	197+04	" T. P. 30'R	1498.55



STA. 197+32.0 = STA. 0 A+00

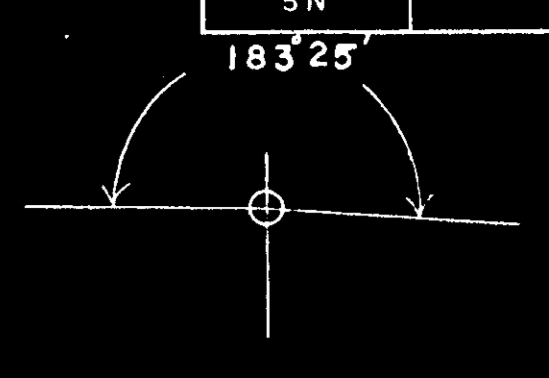
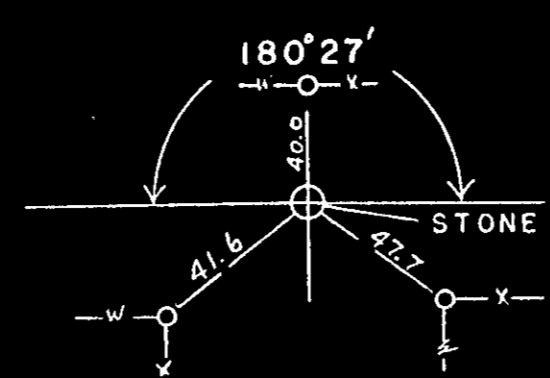
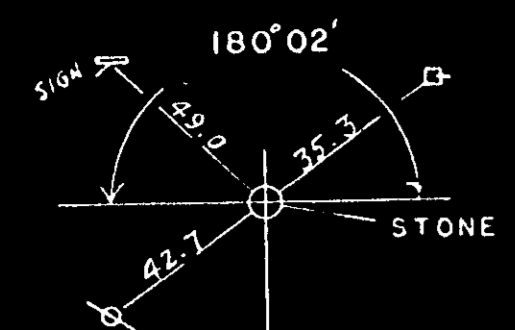
MILE 4 = 5240 FT.



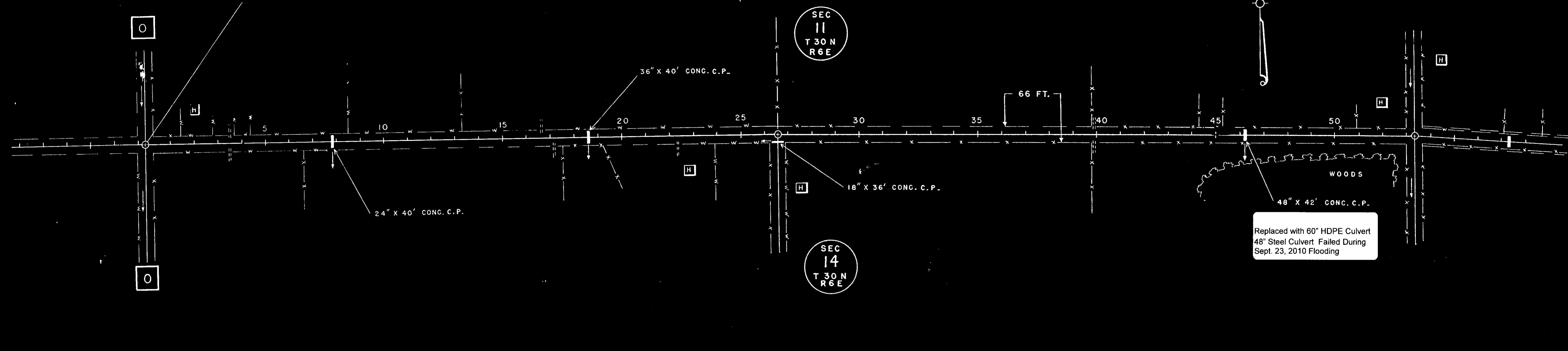
PLAN SURVEYED, PLOTTED, ALIGNED CHECKED, R.T. OF. MAY 1920. NO.

PROFILE PLOTTED, GRADES CHECKED, B.M. NOTED, STRUCTURE NOTATIONS CORRECTED. NO.

BENCH MARKS				
9	197+04	SPK. IN	T.P.	30'R 1498.35
10	26A+37	"	P.P.	33'L 1498.73
11	34A+50	"	P.P.	33'L 1500.28
12	49A+58	"	P.P.	33'L 1476.14

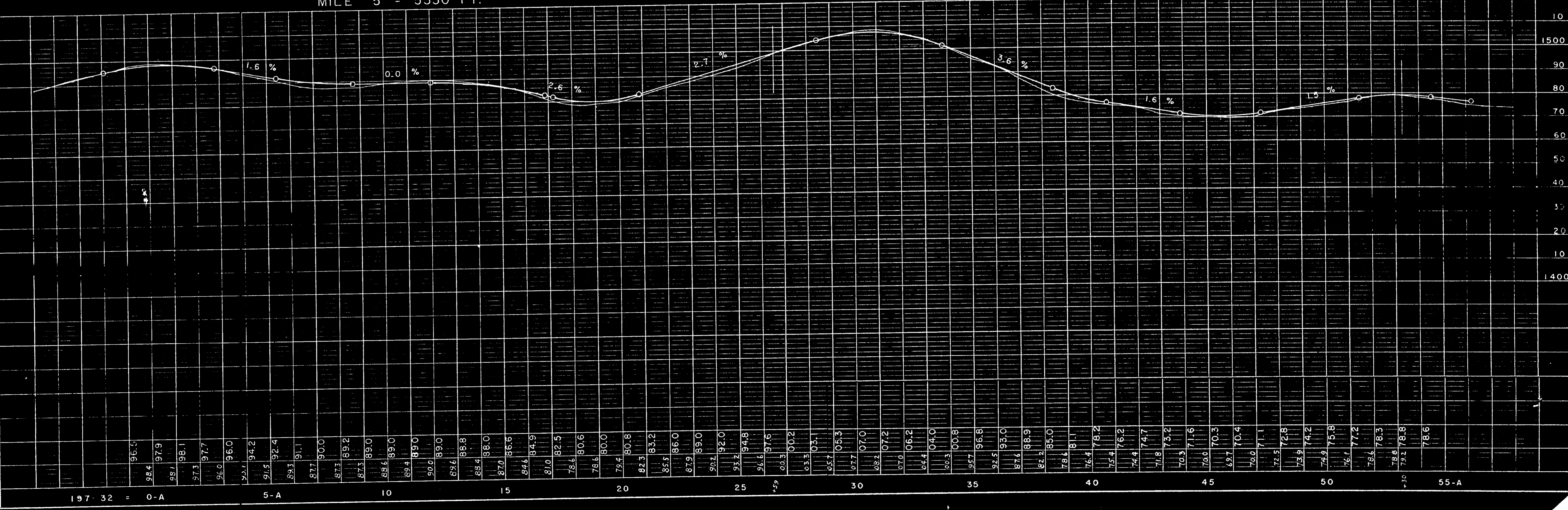


STA. 197 + 32.0 = STA. 0A + 00



Replaced with 60" HDPE Culvert  
48" Steel Culvert Failed During  
Sept. 23, 2010 Flooding

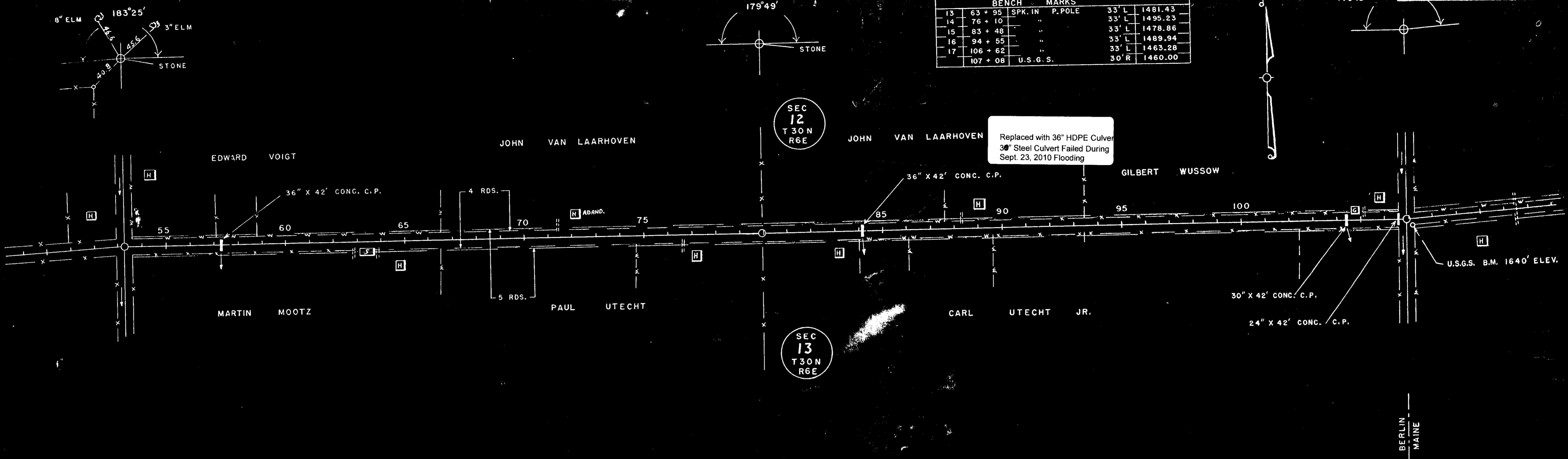
MILE 5 = 5330 FT.



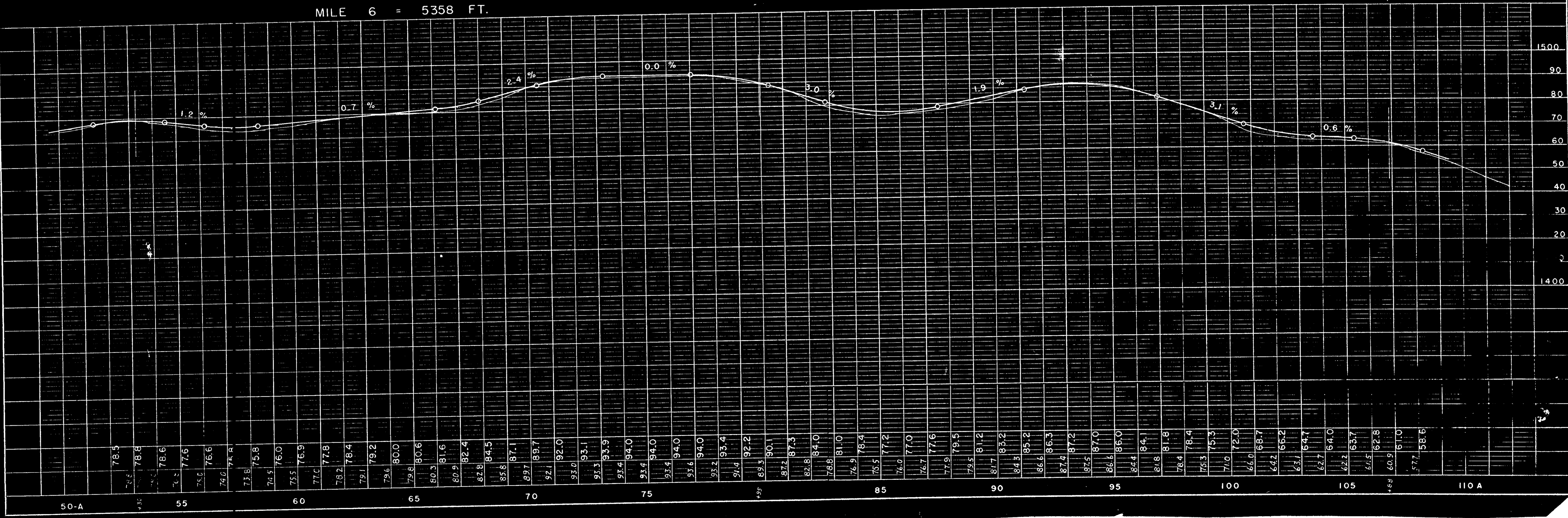
PLAN SURVEYED BY DATE 11-11-11  
 PLOTTED BY DATE 11-11-11  
 CHECKED BY DATE 11-11-11  
 NOTE BOOK NO. 11-11-11  
 RT. OF WAY CHECKED

PROFILE SURVEYED BY DATE 11-11-11  
 PLOTTED BY DATE 11-11-11  
 CHECKED BY DATE 11-11-11  
 NOTE BOOK NO. 11-11-11  
 STRUCTURAL ATMS (11-11-11)

BENCH MARKS			
13	63 + 95	SPK. IN	P. POLE 33' L 1481.43
14	76 + 10	"	33' L 1495.23
15	83 + 48	"	33' L 1478.86
16	94 + 55	"	33' L 1489.94
17	106 + 62	"	33' L 1465.28
	107 + 08	U.S.G.S.	30' R 1460.00



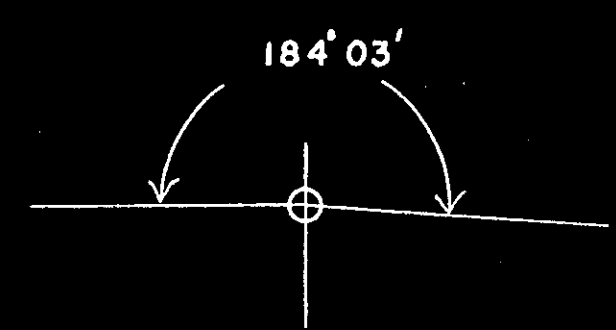
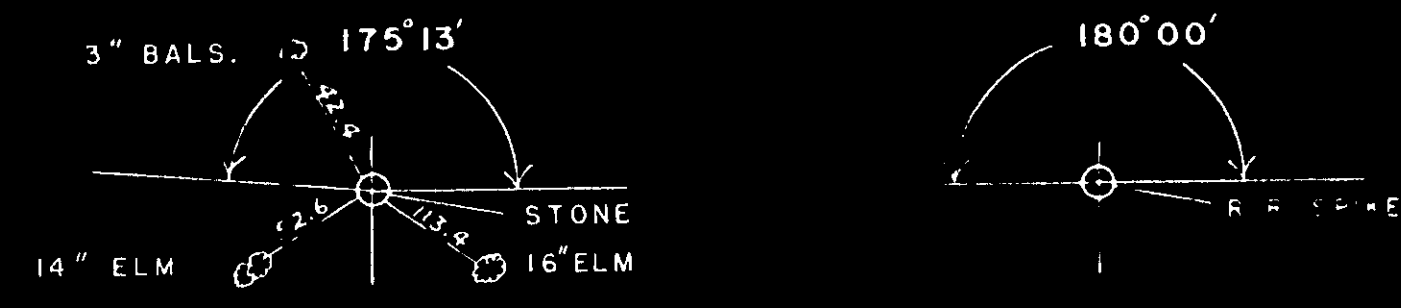
MILE 6 = 5358 FT.



REVISIONS  
 1. 1-1-59  
 2. 1-1-59  
 3. 1-1-59  
 4. 1-1-59  
 5. 1-1-59  
 6. 1-1-59  
 7. 1-1-59  
 8. 1-1-59  
 9. 1-1-59  
 10. 1-1-59  
 11. 1-1-59  
 12. 1-1-59  
 13. 1-1-59  
 14. 1-1-59  
 15. 1-1-59  
 16. 1-1-59  
 17. 1-1-59  
 18. 1-1-59  
 19. 1-1-59  
 20. 1-1-59  
 21. 1-1-59  
 22. 1-1-59  
 23. 1-1-59  
 24. 1-1-59  
 25. 1-1-59  
 26. 1-1-59  
 27. 1-1-59  
 28. 1-1-59  
 29. 1-1-59  
 30. 1-1-59  
 31. 1-1-59  
 32. 1-1-59  
 33. 1-1-59  
 34. 1-1-59  
 35. 1-1-59  
 36. 1-1-59  
 37. 1-1-59  
 38. 1-1-59  
 39. 1-1-59  
 40. 1-1-59  
 41. 1-1-59  
 42. 1-1-59  
 43. 1-1-59  
 44. 1-1-59  
 45. 1-1-59  
 46. 1-1-59  
 47. 1-1-59  
 48. 1-1-59  
 49. 1-1-59  
 50. 1-1-59  
 51. 1-1-59  
 52. 1-1-59  
 53. 1-1-59  
 54. 1-1-59  
 55. 1-1-59  
 56. 1-1-59  
 57. 1-1-59  
 58. 1-1-59  
 59. 1-1-59  
 60. 1-1-59  
 61. 1-1-59  
 62. 1-1-59  
 63. 1-1-59  
 64. 1-1-59  
 65. 1-1-59  
 66. 1-1-59  
 67. 1-1-59  
 68. 1-1-59  
 69. 1-1-59  
 70. 1-1-59  
 71. 1-1-59  
 72. 1-1-59  
 73. 1-1-59  
 74. 1-1-59  
 75. 1-1-59  
 76. 1-1-59  
 77. 1-1-59  
 78. 1-1-59  
 79. 1-1-59  
 80. 1-1-59  
 81. 1-1-59  
 82. 1-1-59  
 83. 1-1-59  
 84. 1-1-59  
 85. 1-1-59  
 86. 1-1-59  
 87. 1-1-59  
 88. 1-1-59  
 89. 1-1-59  
 90. 1-1-59  
 91. 1-1-59  
 92. 1-1-59  
 93. 1-1-59  
 94. 1-1-59  
 95. 1-1-59  
 96. 1-1-59  
 97. 1-1-59  
 98. 1-1-59  
 99. 1-1-59  
 100. 1-1-59  
 101. 1-1-59  
 102. 1-1-59  
 103. 1-1-59  
 104. 1-1-59  
 105. 1-1-59  
 106. 1-1-59  
 107. 1-1-59  
 108. 1-1-59  
 109. 1-1-59  
 110. 1-1-59  
 111. 1-1-59  
 112. 1-1-59  
 113. 1-1-59  
 114. 1-1-59  
 115. 1-1-59  
 116. 1-1-59  
 117. 1-1-59  
 118. 1-1-59  
 119. 1-1-59  
 120. 1-1-59  
 121. 1-1-59  
 122. 1-1-59  
 123. 1-1-59  
 124. 1-1-59  
 125. 1-1-59  
 126. 1-1-59  
 127. 1-1-59  
 128. 1-1-59  
 129. 1-1-59  
 130. 1-1-59  
 131. 1-1-59  
 132. 1-1-59  
 133. 1-1-59  
 134. 1-1-59  
 135. 1-1-59  
 136. 1-1-59  
 137. 1-1-59  
 138. 1-1-59  
 139. 1-1-59  
 140. 1-1-59  
 141. 1-1-59  
 142. 1-1-59  
 143. 1-1-59  
 144. 1-1-59  
 145. 1-1-59  
 146. 1-1-59  
 147. 1-1-59  
 148. 1-1-59  
 149. 1-1-59  
 150. 1-1-59  
 151. 1-1-59  
 152. 1-1-59  
 153. 1-1-59  
 154. 1-1-59  
 155. 1-1-59  
 156. 1-1-59  
 157. 1-1-59  
 158. 1-1-59  
 159. 1-1-59  
 160. 1-1-59  
 161. 1-1-59  
 162. 1-1-59  
 163. 1-1-59  
 164. 1-1-59  
 165. 1-1-59  
 166. 1-1-59  
 167. 1-1-59  
 168. 1-1-59  
 169. 1-1-59  
 170. 1-1-59  
 171. 1-1-59  
 172. 1-1-59  
 173. 1-1-59  
 174. 1-1-59  
 175. 1-1-59  
 176. 1-1-59  
 177. 1-1-59  
 178. 1-1-59  
 179. 1-1-59  
 180. 1-1-59  
 181. 1-1-59  
 182. 1-1-59  
 183. 1-1-59  
 184. 1-1-59  
 185. 1-1-59  
 186. 1-1-59  
 187. 1-1-59  
 188. 1-1-59  
 189. 1-1-59  
 190. 1-1-59  
 191. 1-1-59  
 192. 1-1-59  
 193. 1-1-59  
 194. 1-1-59  
 195. 1-1-59  
 196. 1-1-59  
 197. 1-1-59  
 198. 1-1-59  
 199. 1-1-59  
 200. 1-1-59

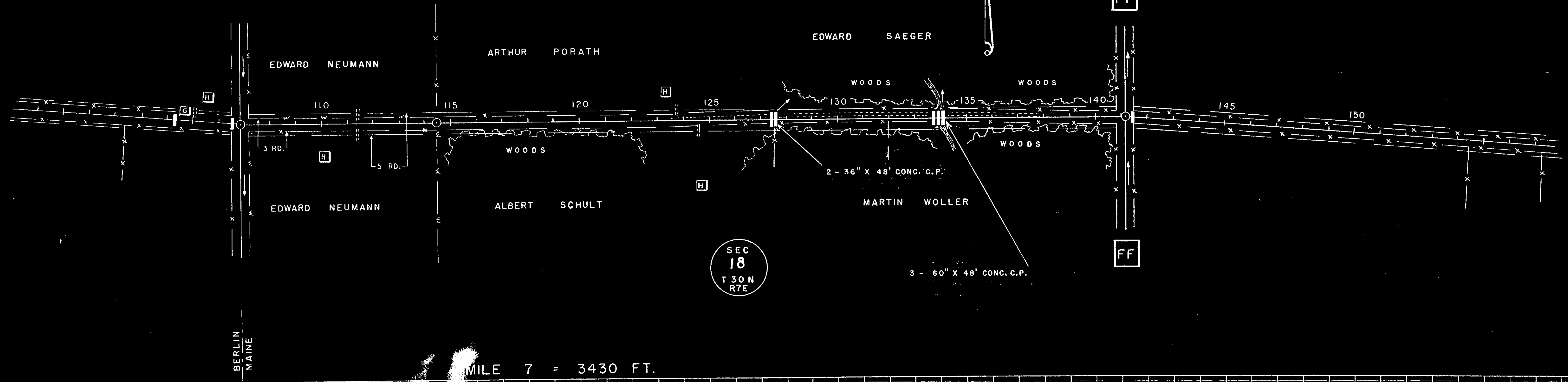
REVISIONS  
 1. 1-1-59  
 2. 1-1-59  
 3. 1-1-59  
 4. 1-1-59  
 5. 1-1-59  
 6. 1-1-59  
 7. 1-1-59  
 8. 1-1-59  
 9. 1-1-59  
 10. 1-1-59  
 11. 1-1-59  
 12. 1-1-59  
 13. 1-1-59  
 14. 1-1-59  
 15. 1-1-59  
 16. 1-1-59  
 17. 1-1-59  
 18. 1-1-59  
 19. 1-1-59  
 20. 1-1-59  
 21. 1-1-59  
 22. 1-1-59  
 23. 1-1-59  
 24. 1-1-59  
 25. 1-1-59  
 26. 1-1-59  
 27. 1-1-59  
 28. 1-1-59  
 29. 1-1-59  
 30. 1-1-59  
 31. 1-1-59  
 32. 1-1-59  
 33. 1-1-59  
 34. 1-1-59  
 35. 1-1-59  
 36. 1-1-59  
 37. 1-1-59  
 38. 1-1-59  
 39. 1-1-59  
 40. 1-1-59  
 41. 1-1-59  
 42. 1-1-59  
 43. 1-1-59  
 44. 1-1-59  
 45. 1-1-59  
 46. 1-1-59  
 47. 1-1-59  
 48. 1-1-59  
 49. 1-1-59  
 50. 1-1-59  
 51. 1-1-59  
 52. 1-1-59  
 53. 1-1-59  
 54. 1-1-59  
 55. 1-1-59  
 56. 1-1-59  
 57. 1-1-59  
 58. 1-1-59  
 59. 1-1-59  
 60. 1-1-59  
 61. 1-1-59  
 62. 1-1-59  
 63. 1-1-59  
 64. 1-1-59  
 65. 1-1-59  
 66. 1-1-59  
 67. 1-1-59  
 68. 1-1-59  
 69. 1-1-59  
 70. 1-1-59  
 71. 1-1-59  
 72. 1-1-59  
 73. 1-1-59  
 74. 1-1-59  
 75. 1-1-59  
 76. 1-1-59  
 77. 1-1-59  
 78. 1-1-59  
 79. 1-1-59  
 80. 1-1-59  
 81. 1-1-59  
 82. 1-1-59  
 83. 1-1-59  
 84. 1-1-59  
 85. 1-1-59  
 86. 1-1-59  
 87. 1-1-59  
 88. 1-1-59  
 89. 1-1-59  
 90. 1-1-59  
 91. 1-1-59  
 92. 1-1-59  
 93. 1-1-59  
 94. 1-1-59  
 95. 1-1-59  
 96. 1-1-59  
 97. 1-1-59  
 98. 1-1-59  
 99. 1-1-59  
 100. 1-1-59  
 101. 1-1-59  
 102. 1-1-59  
 103. 1-1-59  
 104. 1-1-59  
 105. 1-1-59  
 106. 1-1-59  
 107. 1-1-59  
 108. 1-1-59  
 109. 1-1-59  
 110. 1-1-59  
 111. 1-1-59  
 112. 1-1-59  
 113. 1-1-59  
 114. 1-1-59  
 115. 1-1-59  
 116. 1-1-59  
 117. 1-1-59  
 118. 1-1-59  
 119. 1-1-59  
 120. 1-1-59  
 121. 1-1-59  
 122. 1-1-59  
 123. 1-1-59  
 124. 1-1-59  
 125. 1-1-59  
 126. 1-1-59  
 127. 1-1-59  
 128. 1-1-59  
 129. 1-1-59  
 130. 1-1-59  
 131. 1-1-59  
 132. 1-1-59  
 133. 1-1-59  
 134. 1-1-59  
 135. 1-1-59  
 136. 1-1-59  
 137. 1-1-59  
 138. 1-1-59  
 139. 1-1-59  
 140. 1-1-59  
 141. 1-1-59  
 142. 1-1-59  
 143. 1-1-59  
 144. 1-1-59  
 145. 1-1-59  
 146. 1-1-59  
 147. 1-1-59  
 148. 1-1-59  
 149. 1-1-59  
 150. 1-1-59  
 151. 1-1-59  
 152. 1-1-59  
 153. 1-1-59  
 154. 1-1-59  
 155. 1-1-59  
 156. 1-1-59  
 157. 1-1-59  
 158. 1-1-59  
 159. 1-1-59  
 160. 1-1-59  
 161. 1-1-59  
 162. 1-1-59  
 163. 1-1-59  
 164. 1-1-59  
 165. 1-1-59  
 166. 1-1-59  
 167. 1-1-59  
 168. 1-1-59  
 169. 1-1-59  
 170. 1-1-59  
 171. 1-1-59  
 172. 1-1-59  
 173. 1-1-59  
 174. 1-1-59  
 175. 1-1-59  
 176. 1-1-59  
 177. 1-1-59  
 178. 1-1-59  
 179. 1-1-59  
 180. 1-1-59  
 181. 1-1-59  
 182. 1-1-59  
 183. 1-1-59  
 184. 1-1-59  
 185. 1-1-59  
 186. 1-1-59  
 187. 1-1-59  
 188. 1-1-59  
 189. 1-1-59  
 190. 1-1-59  
 191. 1-1-59  
 192. 1-1-59  
 193. 1-1-59  
 194. 1-1-59  
 195. 1-1-59  
 196. 1-1-59  
 197. 1-1-59  
 198. 1-1-59  
 199. 1-1-59  
 200. 1-1-59

BENCH MARKS			
107 + 08	U.S.G.S.	30R	1460.00
18 128 + 42	SPK. IN 12" ELM	80L	1390.23
19 140 + 70	" 12" OAK	70R	1410.32



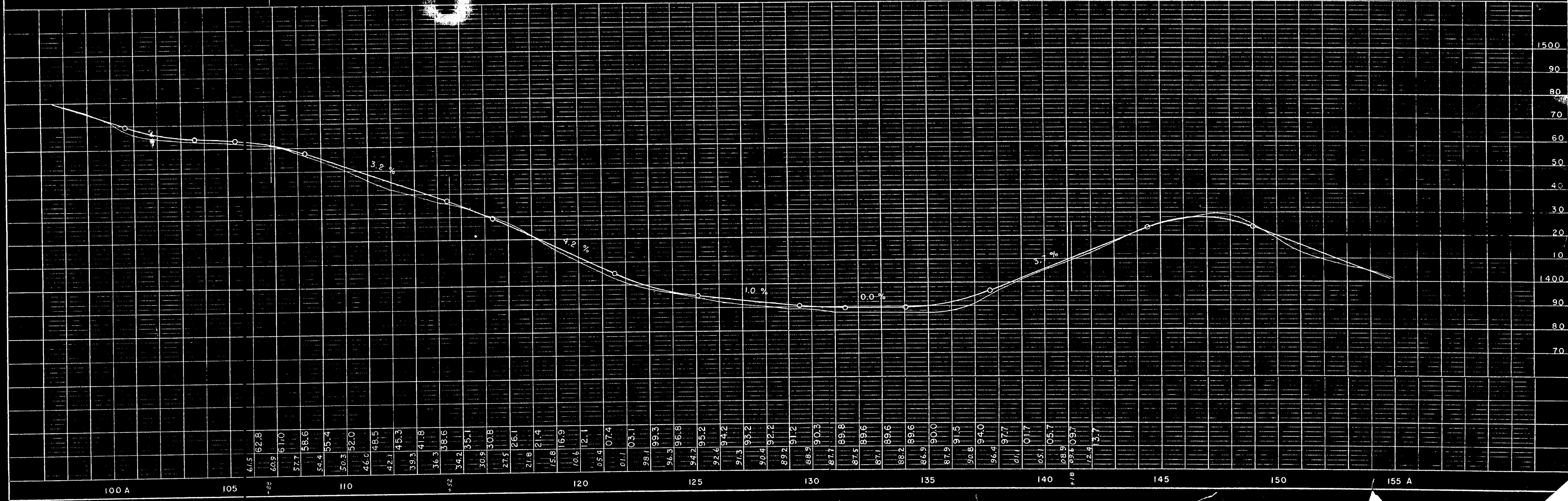
SEC 7  
T 30 N  
R 7 E

SEC 18  
T 30 N  
R 7 E



BERLIN MAINE

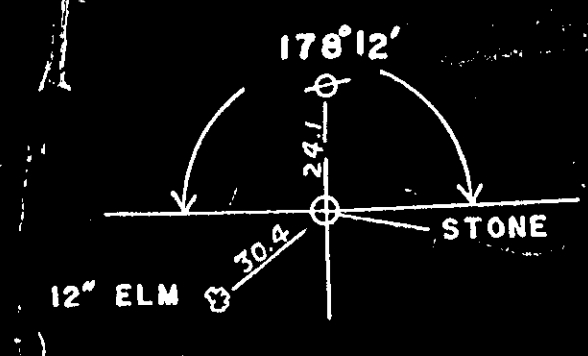
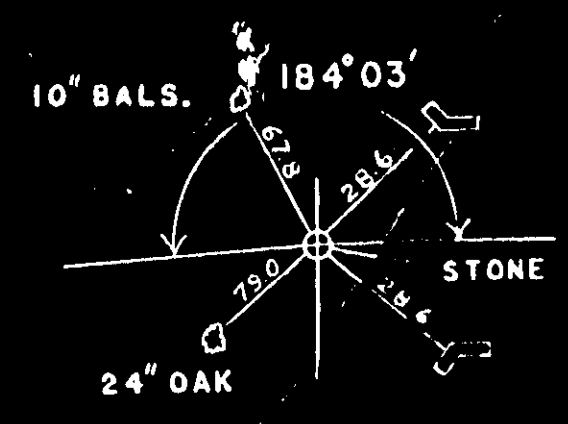
MILE 7 = 3430 FT.



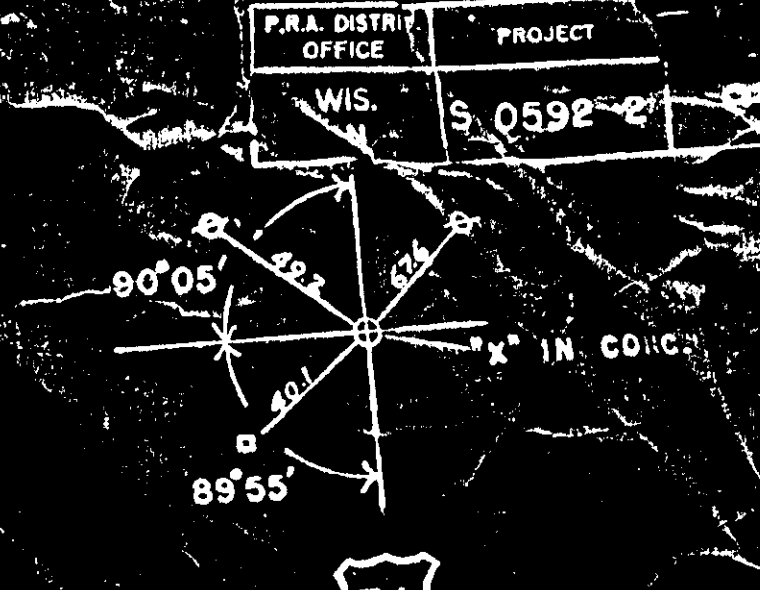
PLAN  
SURVEYED  
ALIGNED  
CHECKED  
RT. OF WAY CHECKED  
NO.

PROFILE  
SURVEYED  
PLOTTED  
GRADES CHECKED  
STRUCTURE NOTATIONS CHKD.  
DATE  
BY  
C  
E  
F  
C



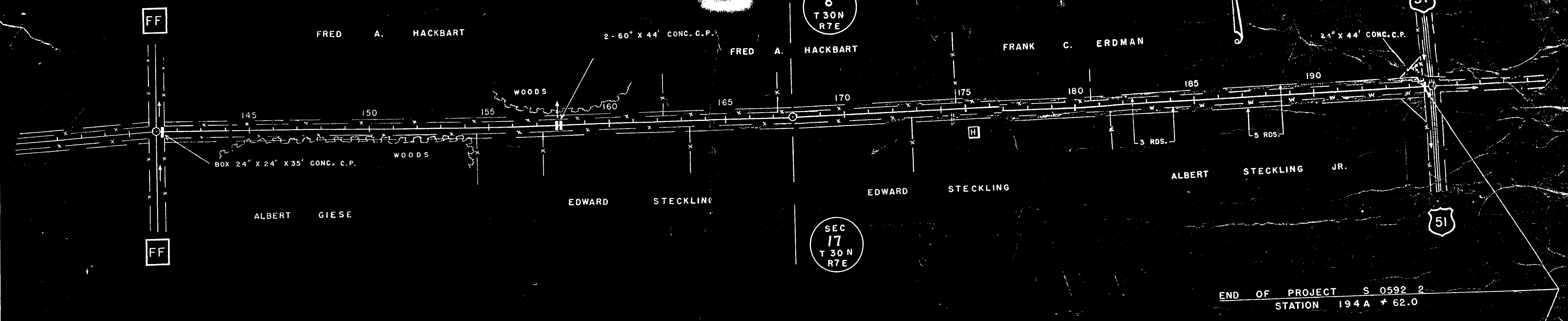


BENCH MARKS			
21	150A+00	SPK. IN 10' MAR 60' R	1421.86
22	161A+00	" 10' ELM 70' L	1400.97
22	180A+18	" PP. 33' R	1469.63
23	194A+62	TOP R/W M.P. 33' R	1432.21
	194+95	C.L. CONC. AT X	1431.39



QUALITY CONTROL CHECKED  
 NOTE BOOK NO. \_\_\_\_\_  
 DATE OF WAY CHECKED \_\_\_\_\_  
 BY \_\_\_\_\_

QUALITY CONTROL CHECKED  
 NOTE BOOK NO. \_\_\_\_\_  
 DATE OF WAY CHECKED \_\_\_\_\_  
 BY \_\_\_\_\_



END OF PROJECT S 0592 2  
 STATION 194 A + 62.0

MILE 8 = 5344 FT.

NET LENGTH OF CENTERLINE STA. 0+33 TO STA. 194A+62 = 39,161 FT. = 7.417 MILES

