

Sheet Number	Total Sheets

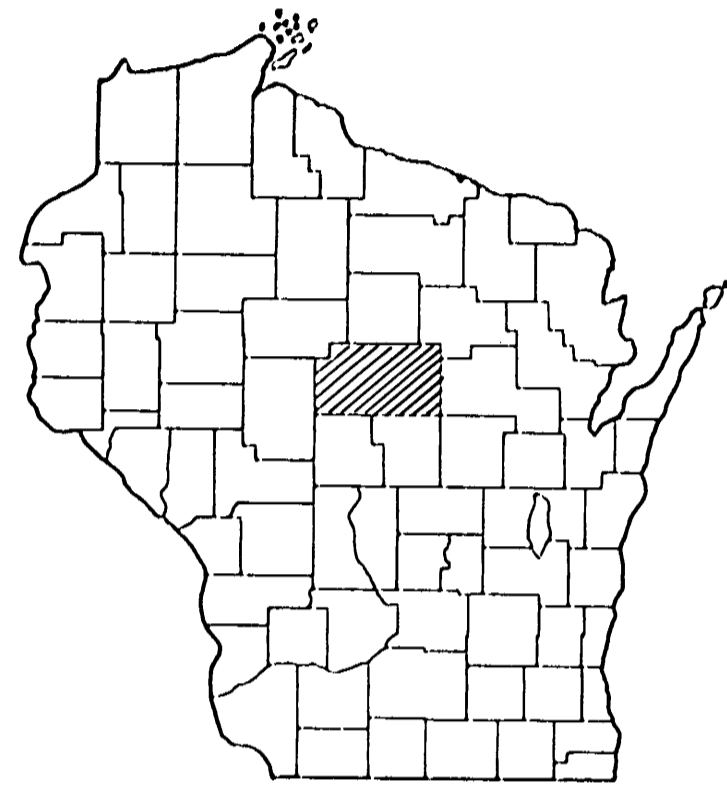
Index of Sheets

Sheet No.	1	Title
Sheet No.		Typical Cross Sections
Sheet No.		Estimate of Quantities
Sheet No.		Miscellaneous Quantities
Sheet No.		Right of Way Plat
Sheet No.		Plan and Profile Sta.
Sheet No.		Standard Details
Sheet No.		Drainage Structures
Sheet No.		Cross Sections

to Sta.

STATE OF WISCONSIN  
 DEPARTMENT OF TRANSPORTATION  
 DIVISION OF HIGHWAYS

PLAN AND PROFILE OF PROPOSED  
 C.T.H. "U" — C.T.H. "A"  
 C.T.H. "O"  
 MARATHON COUNTY



PRELIMINARY COPY

PROJECT IDENTIFICATION NUMBER	FEDERAL PROJECT DESIGNATION
9484-1-70	S 1139 (4)

Scales { Plan 1 in. = 100 ft.  
 Profile Hor. 1 in. = 100 ft. Vert. 1 in. = 10 ft.  
 Cross Sections Hor. 1 in. = Vert. 1 in. =

Design Designation

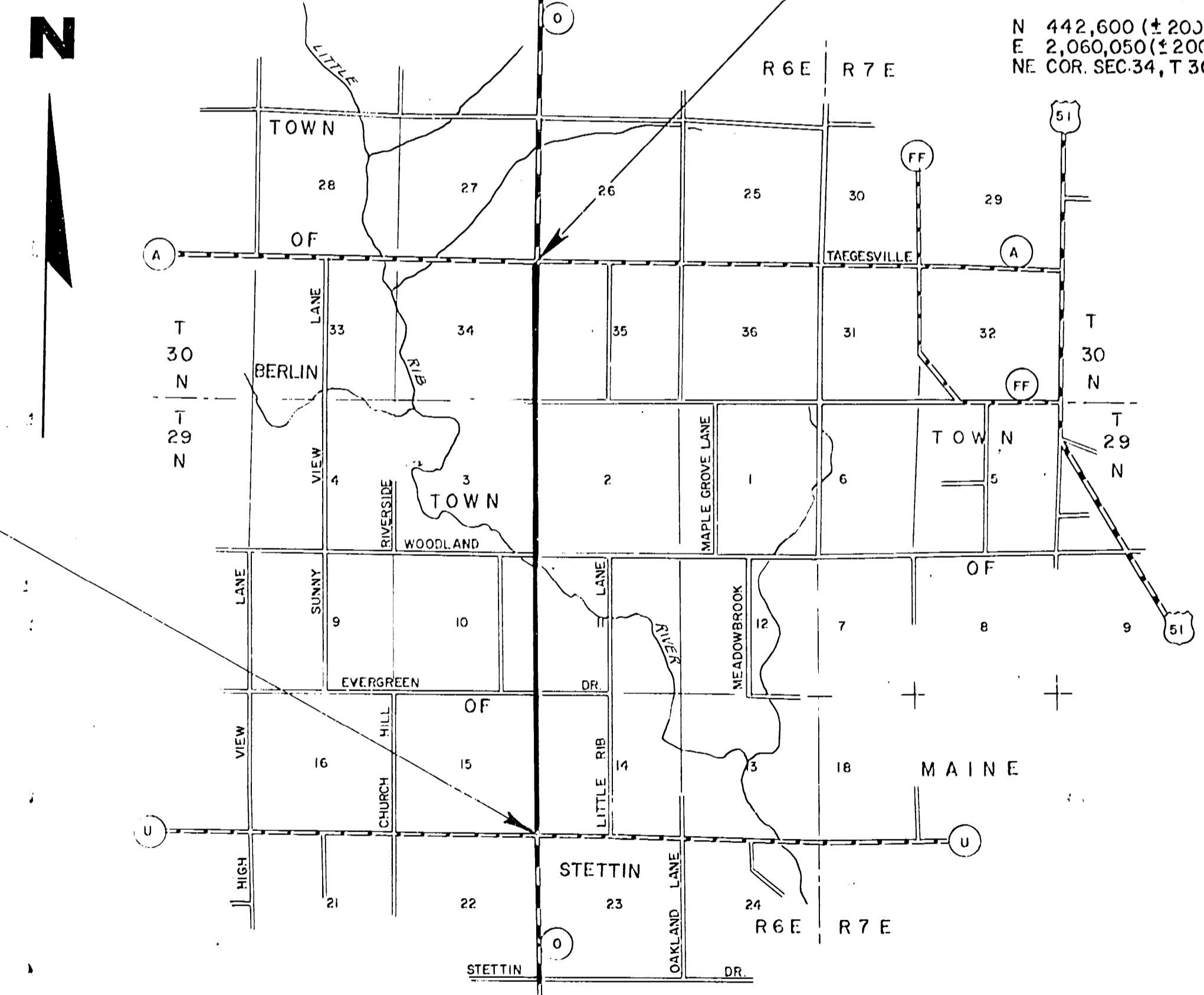
A. D. T.	1970	=	110-160
A. D. T.	1990	=	300-350
D. H. V.		=	45-55
D.		=	60-40
T.	% ADT	=	8.8
V.		=	50 M.P.H.

BEGINNING OF PROJECT S 1139 (4)/9484-1-70  
 STA. 20 +00

N 421,050 (±200)  
 E 2,060,050 (±200)  
 SE COR. SEC. 15, T 29N, R 6E

END OF PROJECT S 1139 (4)/9484-1-70  
 STA. 235 +93.95

N 442,600 (±200)  
 E 2,060,050 (±200)  
 NE COR. SEC. 34, T 30N, R 6E



Layout  
 Scale 0 MILES

Total Net Length of Centerline = 4.69 Mi.

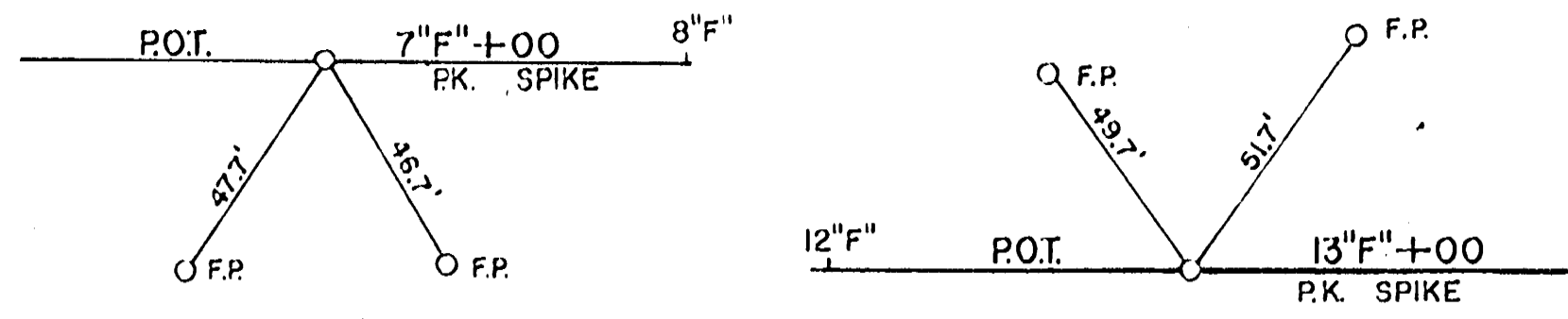
Conventional Signs

State Line	-----	Culverts in Place	-----
County Line	-----	Culverts Required	-----
Township or Range Line	-----	Drop Inlet	-----
Section Line	-----	Power Pole	-----
New Right of Way Line	-----	Telephone or Telegraph Pole	-----
Present Right of Way Line	-----	Right of Way Markers	-----
Wire Fence { Woven	-----	Reference Stake for Hubs Only	-----
{ Barbed	-----	Marsh	-----
Lot Line	-----	Hedge	-----
Corporate or City Limits	-----	Trees	-----
Property Line	-----	Ground Elevation	Datum Line 73.9
Traveled Way or P.E.	-----	Grade Elevation	Datum Line 76.16
Railroads	-----		
Base or Survey Line	-----		

STATE OF WISCONSIN DEPARTMENT OF TRANSPORTATION DIVISION OF HIGHWAYS	
Surveyor: M.T.M.	DISTRICT CHECKER
DESIGNER: HAK	C.O. CHECKER
Correct:	
Date	District Engineer
Recommended for Approval:	
Date	Chief Design Engineer
Approved:	
Date	State Highway Engineer
U.S. DEPARTMENT OF TRANSPORTATION FEDERAL HIGHWAY ADMINISTRATION BUREAU OF PUBLIC ROADS	
REGION 4 WISCONSIN DIVISION	
Approved:	
Date	Division Engineer

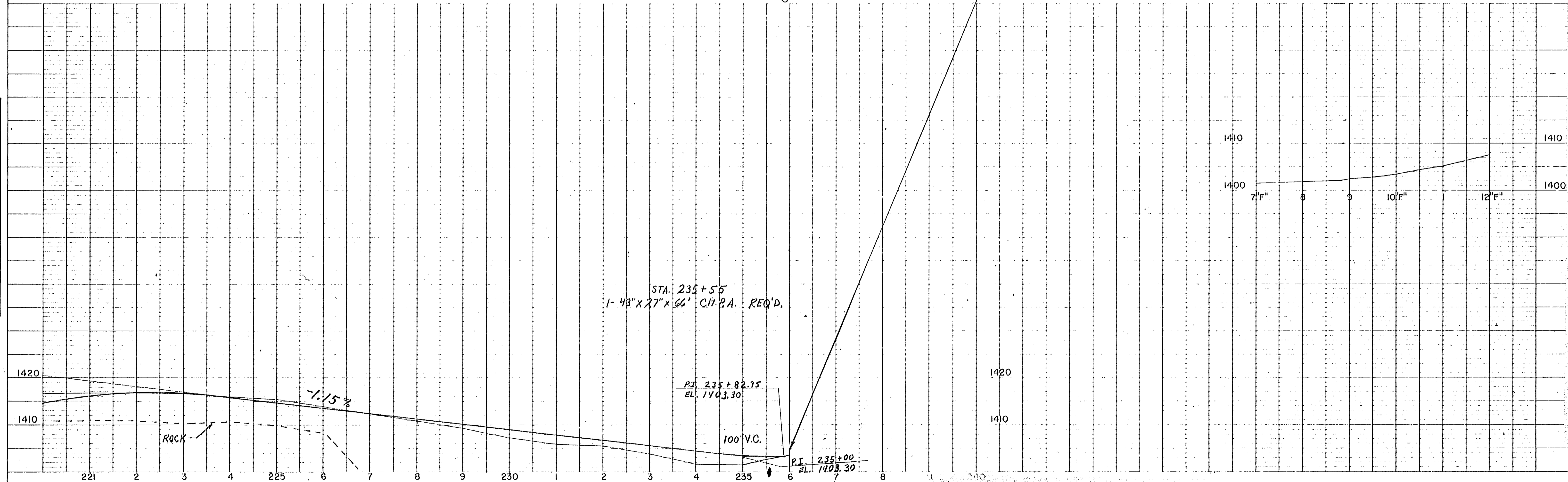
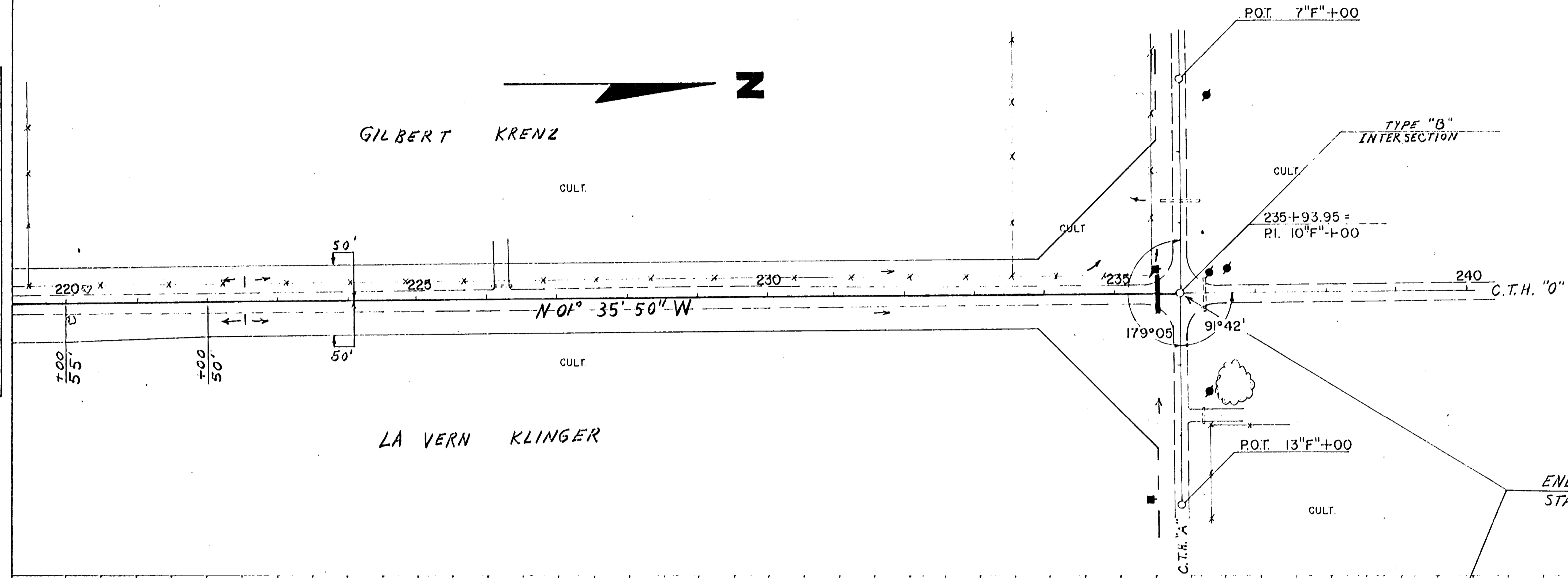
NO.	STATION	DESCRIPTION	ELEV.
30	235+53	SPIKE IN POWER POLE	30'LT. 1400.31

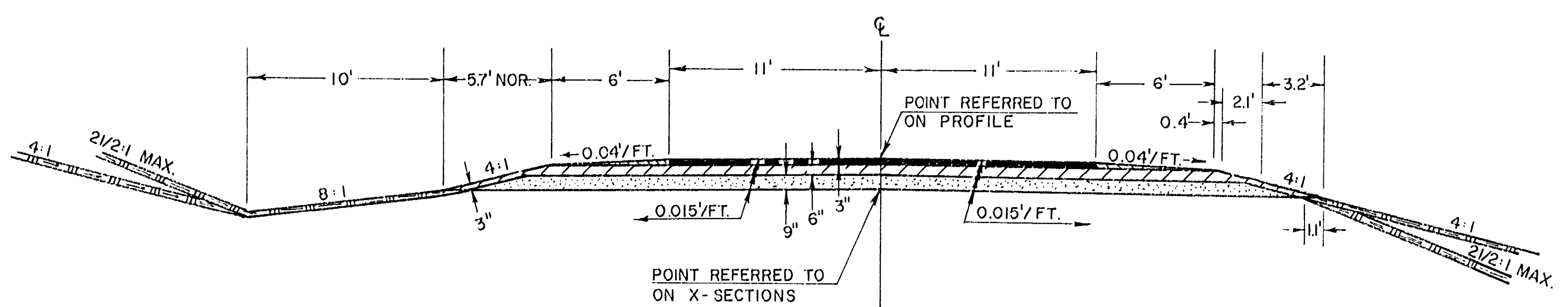
PROJECT ID.	SHEET NUMBER	TOTAL SHEETS
FEDERAL PROJECT DESIGNATION:		
S1131(4)		



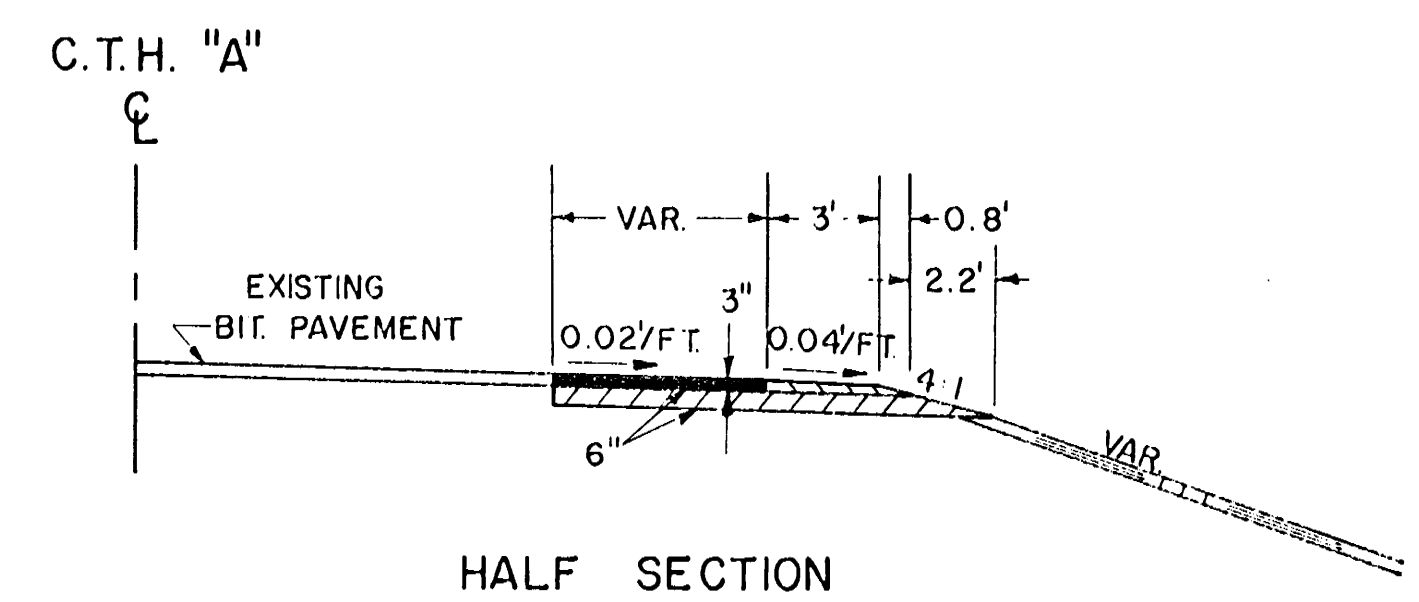
DATE: 8-69  
BY: M.T.M.  
DLN:  
PLAN  
SURVEYED: ROUTE  
NOTED: ROAD  
NO. 1111

DATE: 8-69  
BY: M.T.M.  
DLN:  
PROFILE  
SURVEYED: ROUTE  
NOTED: ROAD  
NO. 1111

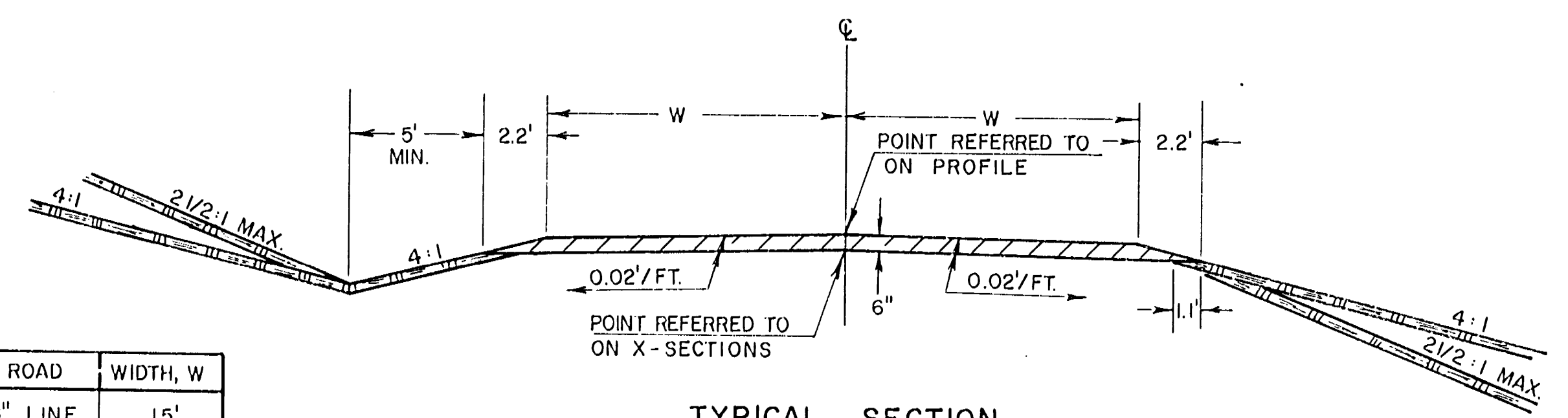




TYPICAL SECTION  
12+00 - 235+94  
"A" LINE

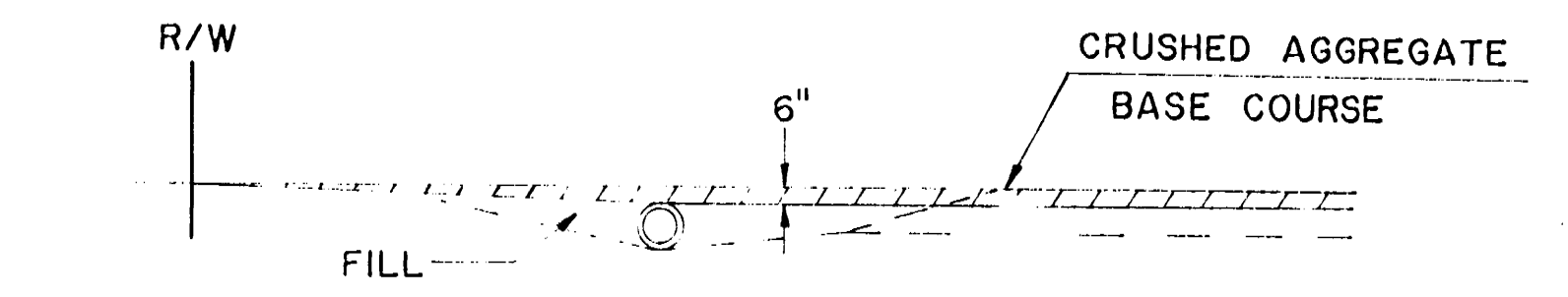


HALF SECTION  
"F" LINE INTERSECTION

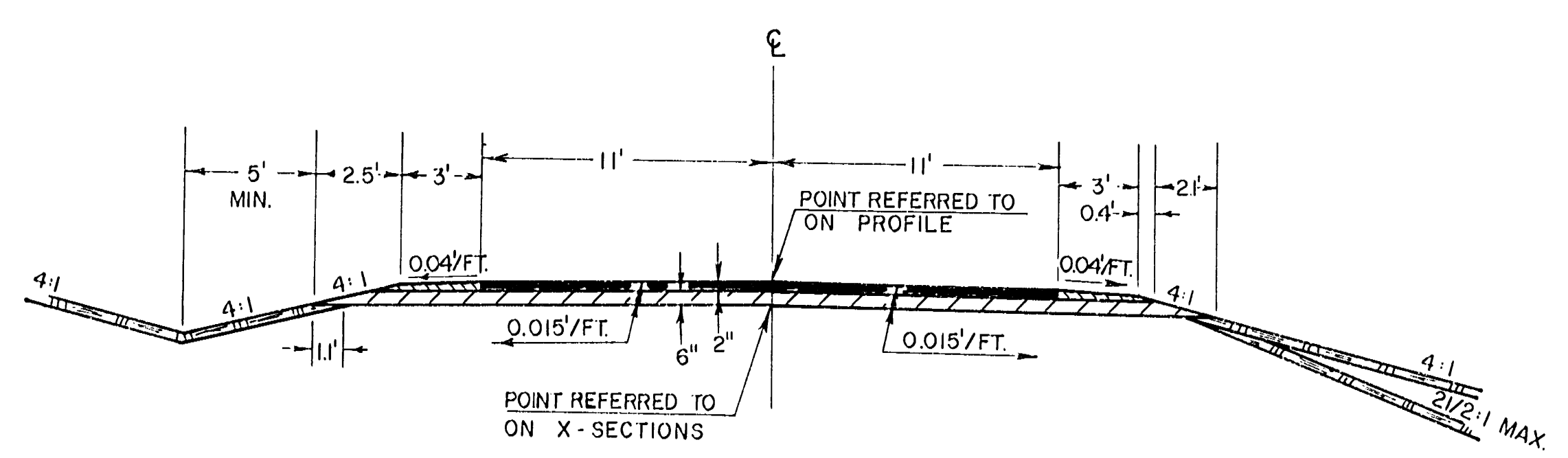


TYPICAL SECTION  
"B", "C" AND "E" LINES

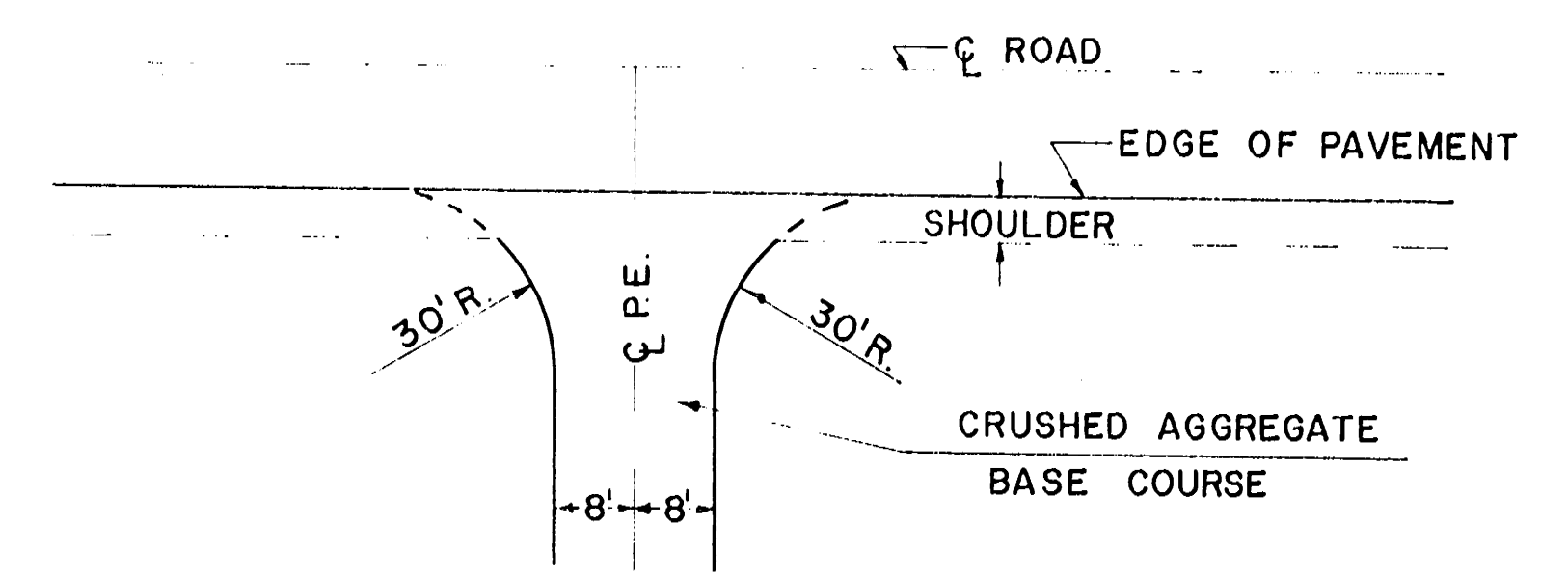
ROAD	WIDTH, W
"B" LINE	15'
"C" LINE	12'
"E" LINE	11'



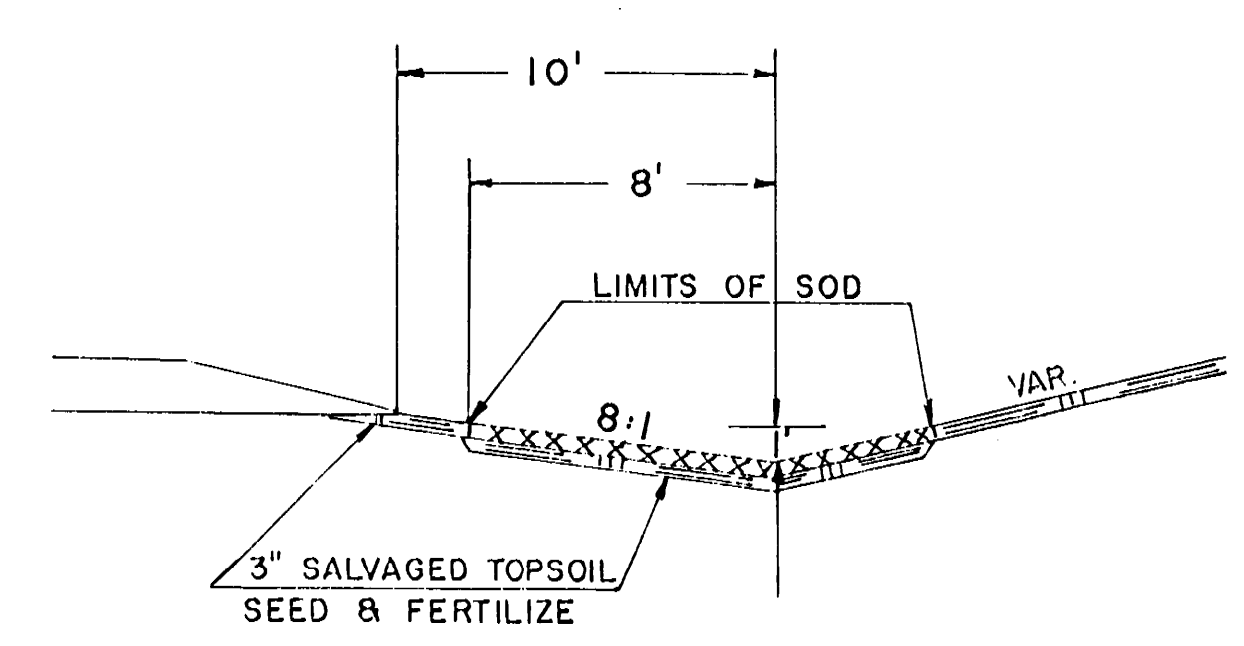
PROFILE OF PRIVATE ENTRANCES  
SHOWING BASE COURSE RUNOUT AT ENTRANCES



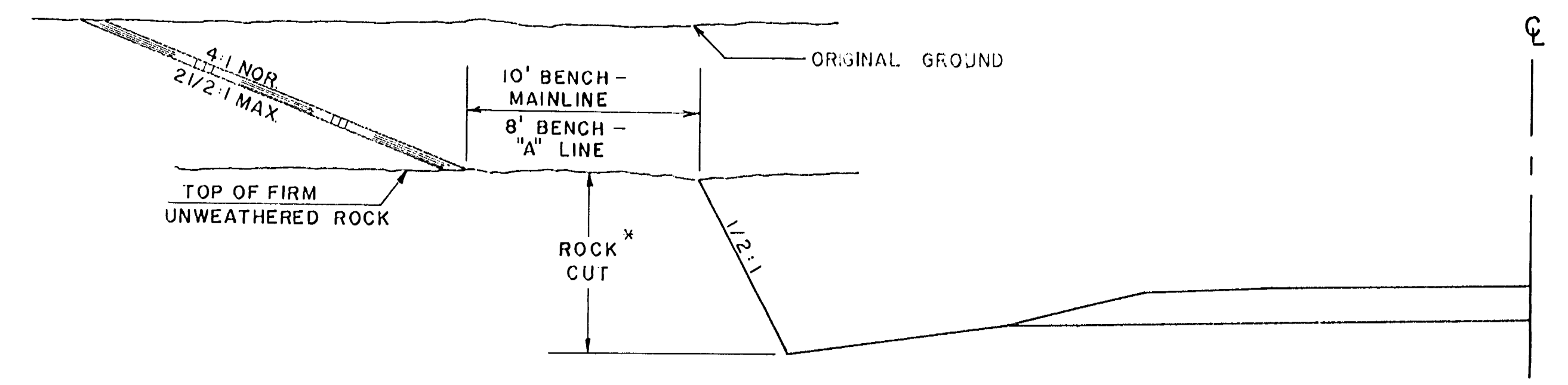
TYPICAL SECTION  
"D" LINE



PLAN OF PRIVATE ENTRANCES



SOD DITCH  
AND  
SOD DITCH CHECK



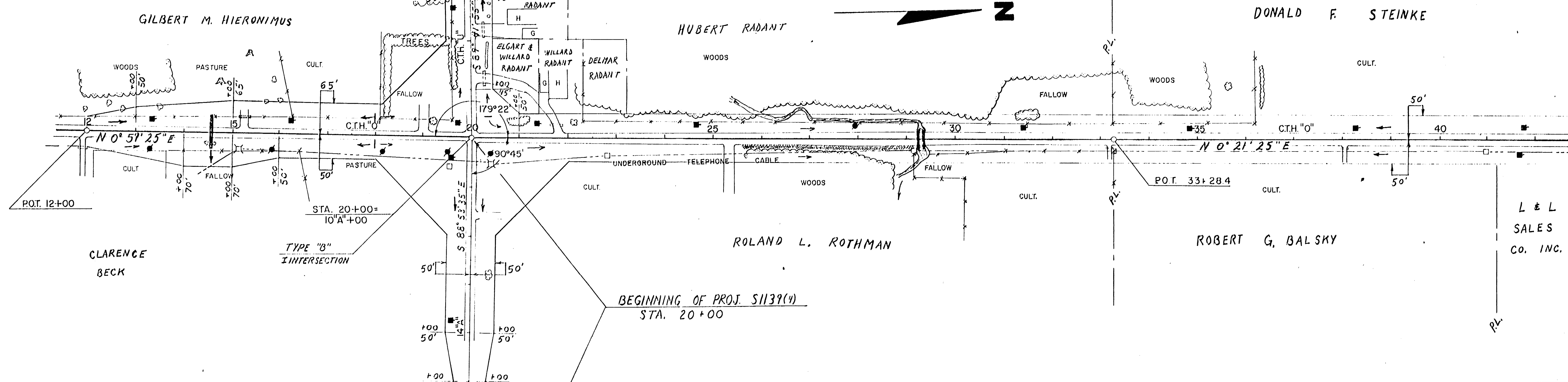
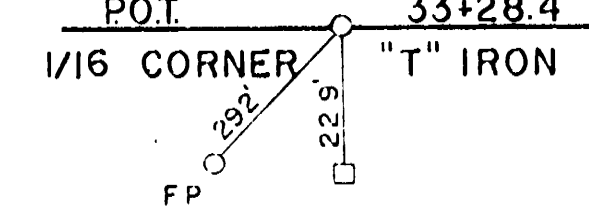
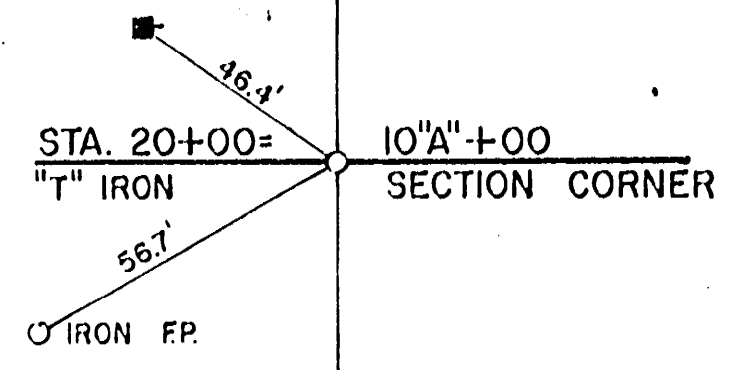
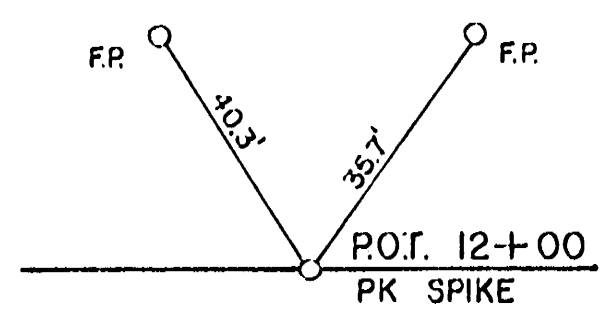
HALF-SECTION  
ROCK CUT

- LEGEND
- BITUMINOUS CONCRETE PAVEMENT
  - CRUSHED AGGREGATE BASE COURSE
  - CRUSHED AGGREGATE SHOULDER MATERIAL
  - GRANULAR SUBBASE COURSE
  - 3" SALVAGED TOPSOIL, SEED & FERTILIZE

\* WHEN ROCK CUT IS LESS THAN 5' DITCH BACK SLOPES SHALL BE TREATED THE SAME AS IN EARTH CUTS.

PROJECT ID	SHEET NUMBER	TOTAL SHEETS
FEDERAL PROJECT DESIGNATION S1139(4)		

NO.	STATION	DESCRIPTION	ELEV.
3	19+70	SPIKE IN 14" MAPLE	1340.77
4	24+93	SPIKE IN 11" ELM	1302.90
5	33+65	SPIKE IN 14" ELM	1308.25



DATE: 6-59  
BY: M.L.M.  
D.L.N.  
SURVEYED: [ ]  
NOTED: [ ]  
PLAN: [ ]  
NOTE BOOK: [ ]  
No. [ ] L.L.  
REVISIONS CHECKED: [ ]

DATE: 6-59  
BY: M.L.M.  
D.L.N.  
SURVEYED: [ ]  
NOTED: [ ]  
PROFILE: [ ]  
NOTE BOOK: [ ]  
No. [ ] L.L.  
REVISIONS CHECKED: [ ]

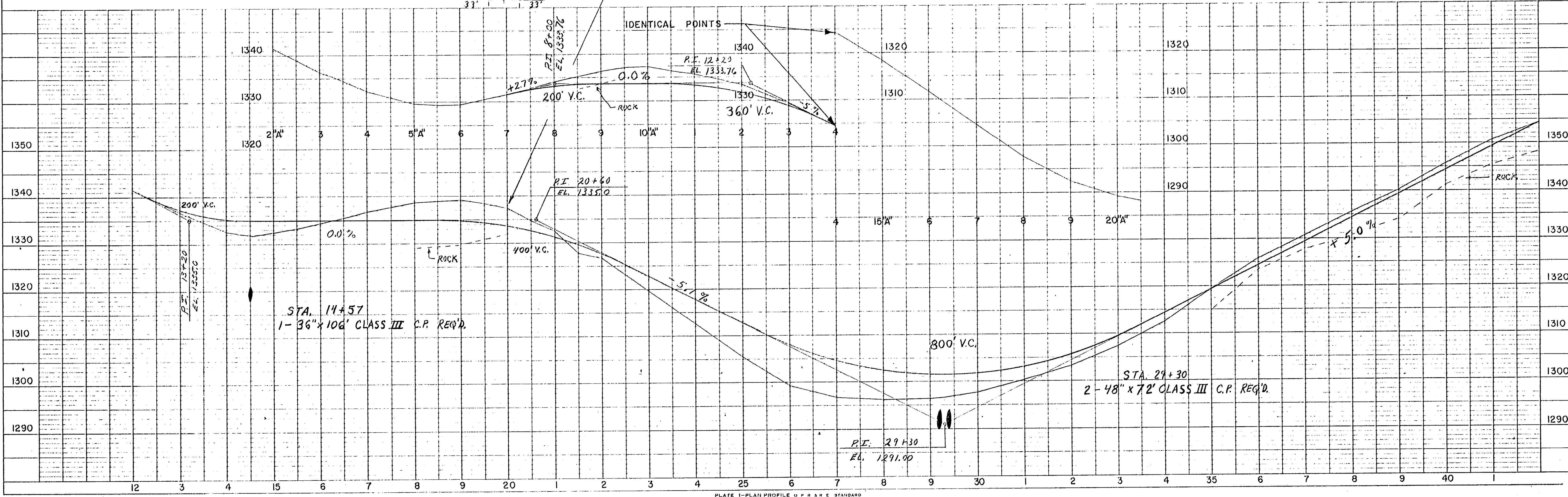


PLATE 1-PLAN PROFILE OF P.R.A.R.E. STANDARD  
100' HORIZ. - 1" = 100' HORIZ. - 1" = 10' VERT.  
NATIONAL TRADING PAPER DIVISION

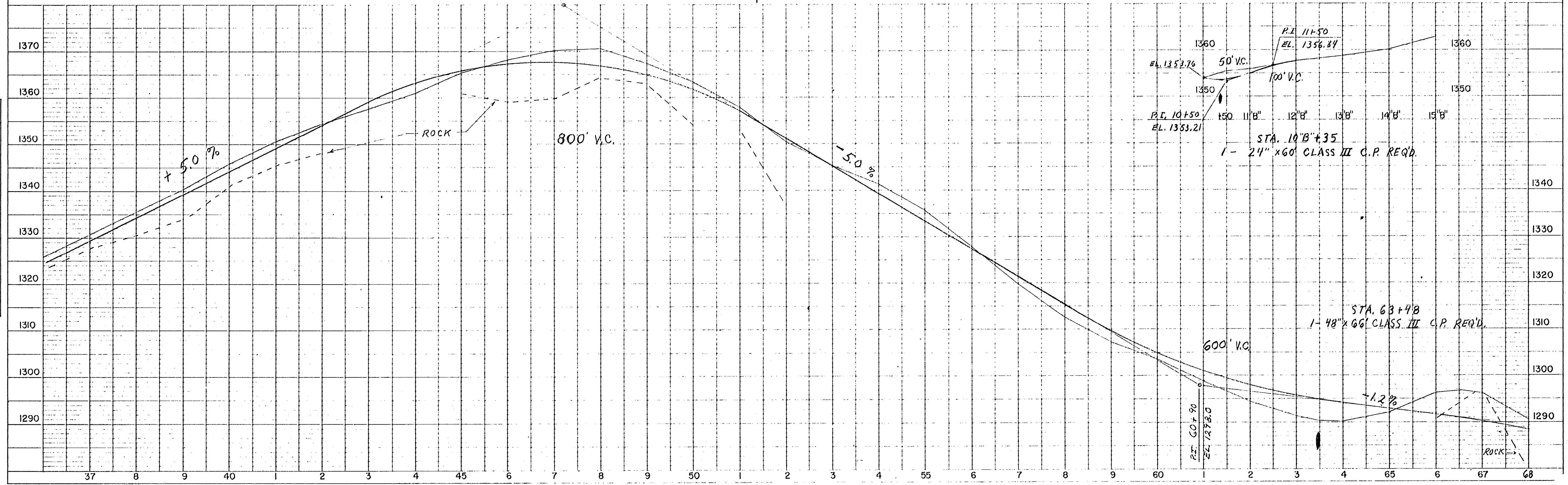
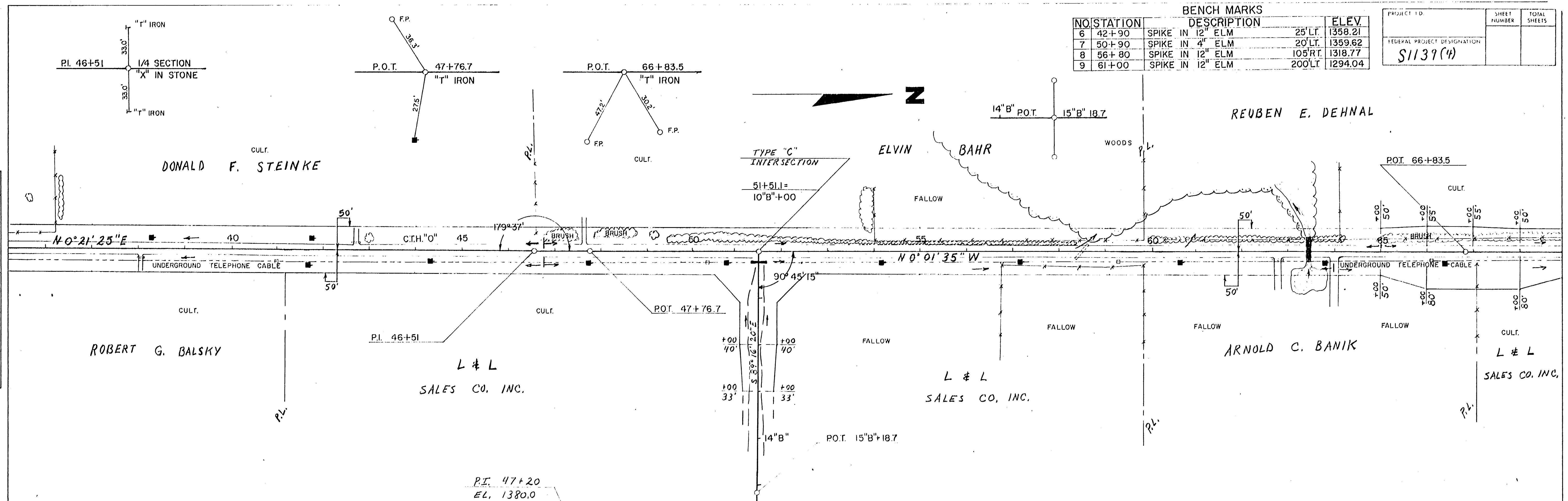
BENCH MARKS

NO.	STATION	DESCRIPTION	ELEV.
6	42+90	SPIKE IN 12" ELM	25' LT. 1358.21
7	50+90	SPIKE IN 4" ELM	20' LT. 1359.62
8	56+80	SPIKE IN 12" ELM	105' RT. 1318.77
9	61+00	SPIKE IN 12" ELM	200' LT. 1294.04

PROJECT ID	SHEET NUMBER	TOTAL SHEETS
FEDERAL PROJECT DESIGNATION		
S1139(4)		

DATE 8-59  
BY M.T.M.  
D.N.  
SURVEYED  
NOTED  
NOTE BOOK  
No. L.L.L.

DATE 8-59  
BY M.T.M.  
D.N.  
SURVEYED  
NOTED  
NOTE BOOK  
No. L.L.L.

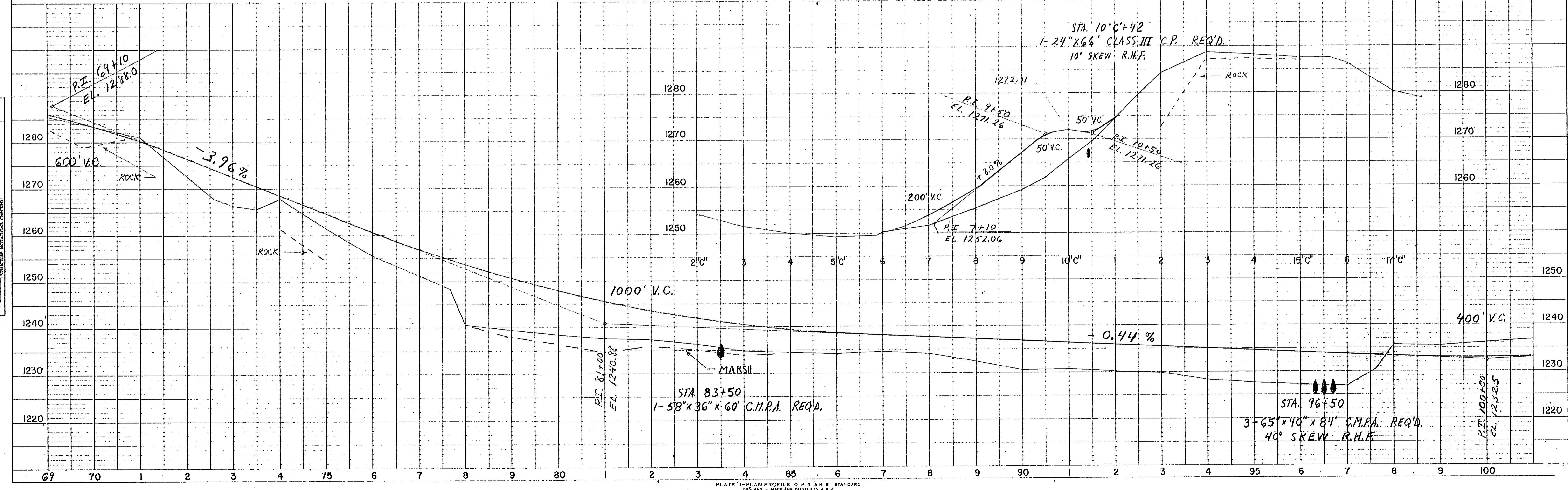
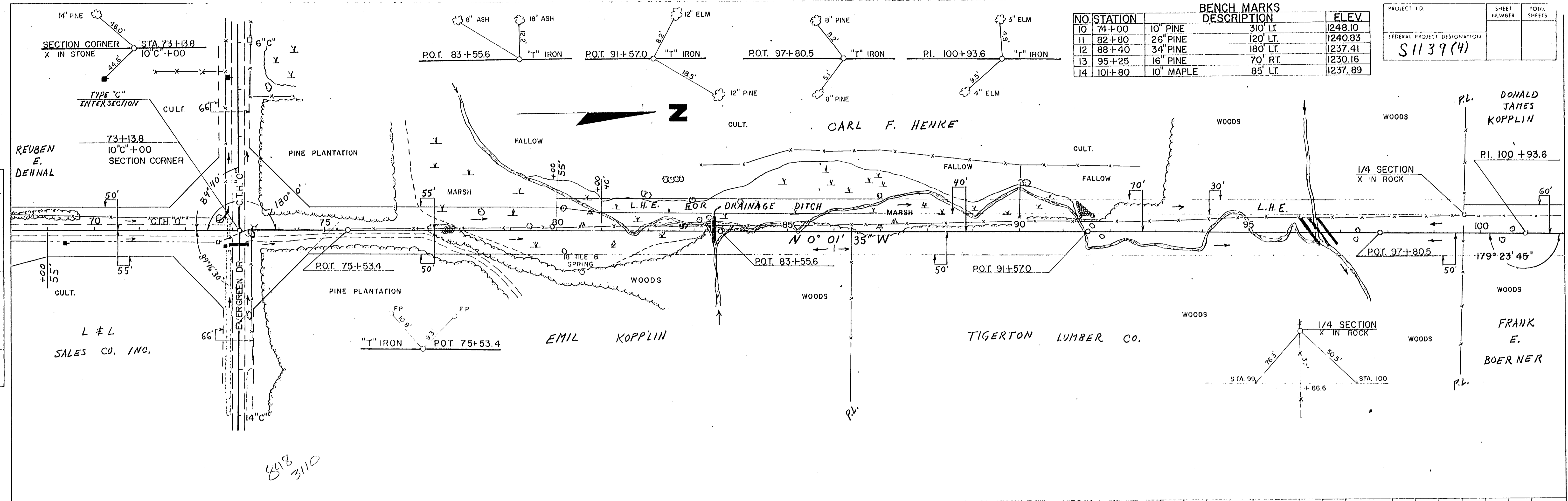


PLAN  
 SURVING  
 M.T.M.  
 D.L.N.  
 8-69  
 11-69  
 NOTE BOOK  
 ALIGNMENT CHECKED  
 E.A. NOTED  
 No. L.L.  
 STRUCTURE NOTATIONS CHECKED

PROFILE  
 SURVING  
 M.T.M.  
 D.L.N.  
 8-69  
 11-69  
 NOTE BOOK  
 GRADES CHECKED  
 E.A. NOTED  
 No. L.L.  
 STRUCTURE NOTATIONS CHECKED

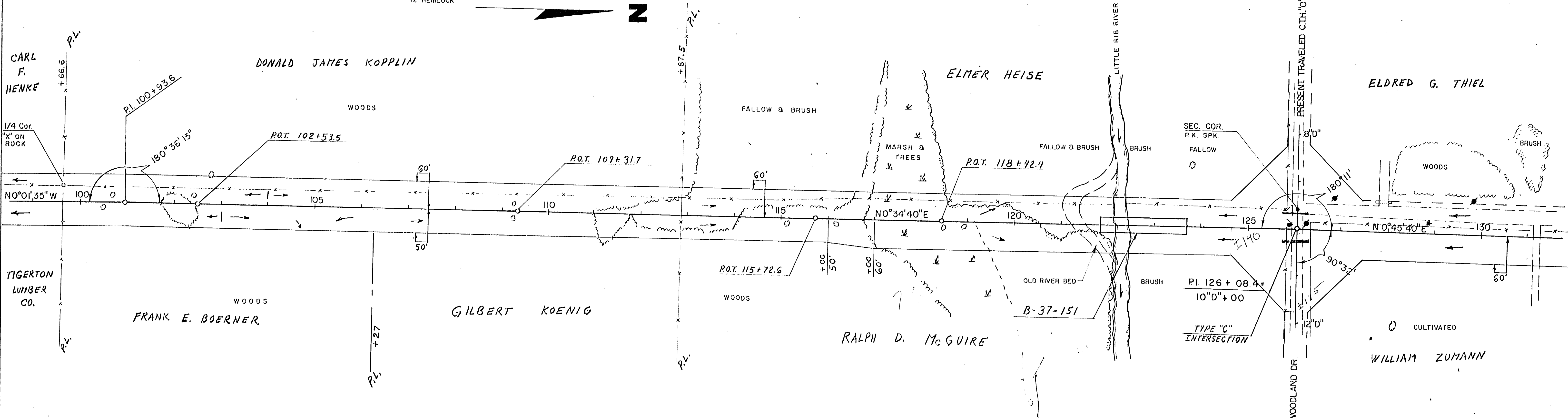
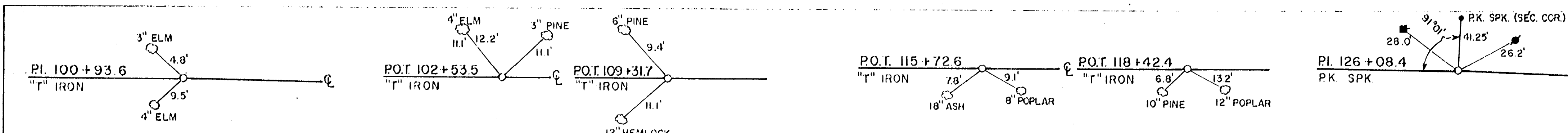
NO	STATION	BENCH MARKS DESCRIPTION	ELEV.
10	74+00	10" PINE	1248.10
11	82+80	26" PINE	1240.83
12	88+40	34" PINE	1237.41
13	95+25	16" PINE	1230.16
14	101+80	10" MAPLE	1237.89

PROJECT I.D.	SHEET NUMBER	TOTAL SHEETS
FEDERAL PROJECT DESIGNATION		
S1139(4)		



BENCH MARKS			
NO.	STATION	DESCRIPTION	ELEV.
14	101+80	SPK IN 10" MAPLE	85' LT. 1237.89
15	108+52	SPK IN 10" PINE	90' RT. 1235.27
16	113+40	SPK IN 8" ELM	105' LT. 1230.26
17	120+60	SPK IN 14" MAPLE	70' RT. 1213.41
18	123+80	SPK IN 14" ELM	130' LT. 1210.34

PROJECT ID.	9484-1-00
FEDERAL PROJECT DESIGNATION	S 1139 (4)
SHEET NUMBER	
TOTAL SHEETS	



**PLAN**  
 SHEETED BY: [blank]  
 DATE: 8-19-69  
 DRAWN BY: [blank]  
 CHECKED BY: [blank]  
 NOTE BOOK: [blank]  
 NO. [blank]

**PROFILE**  
 SHEETED BY: [blank]  
 DATE: [blank]  
 DRAWN BY: [blank]  
 CHECKED BY: [blank]  
 NOTE BOOK: [blank]  
 NO. [blank]

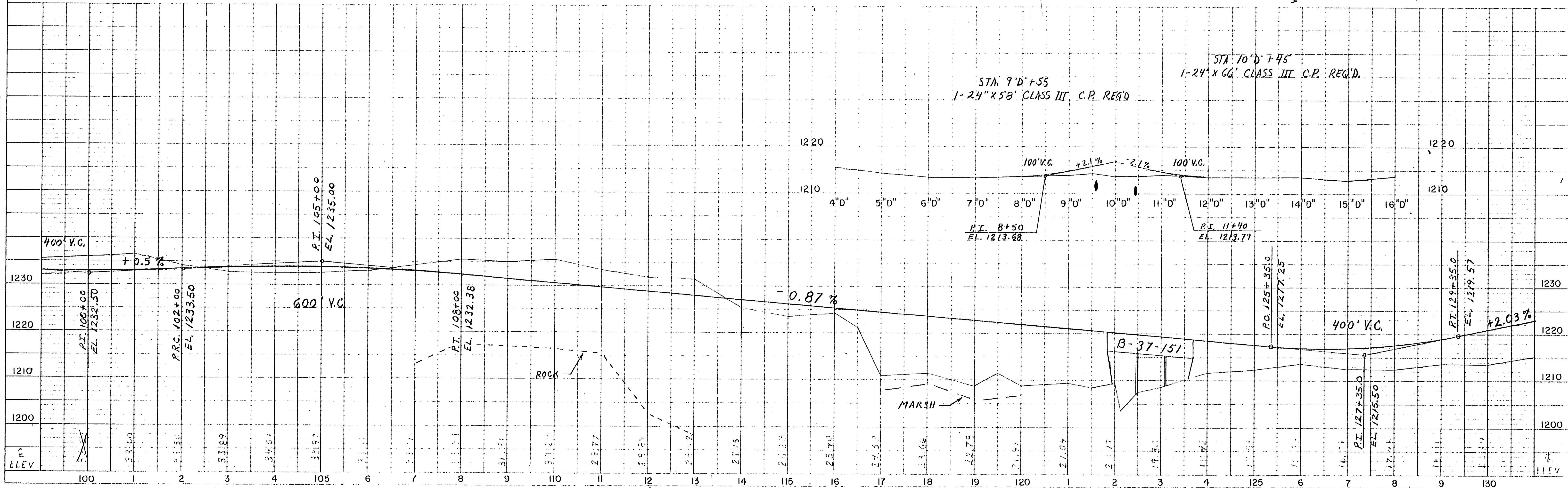


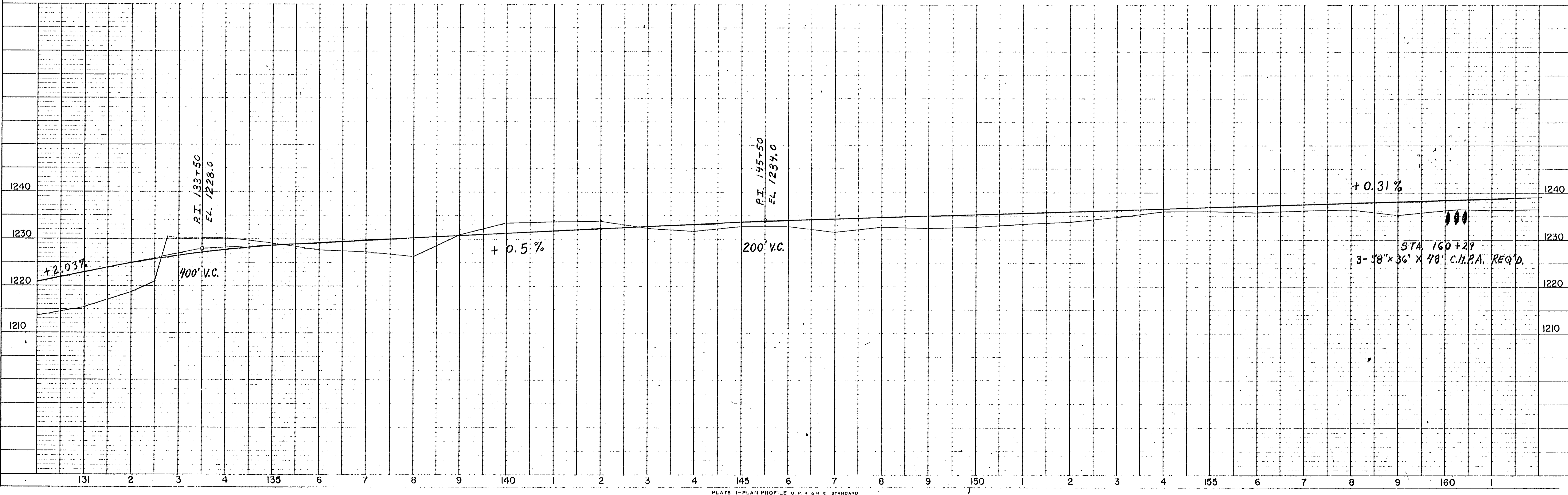
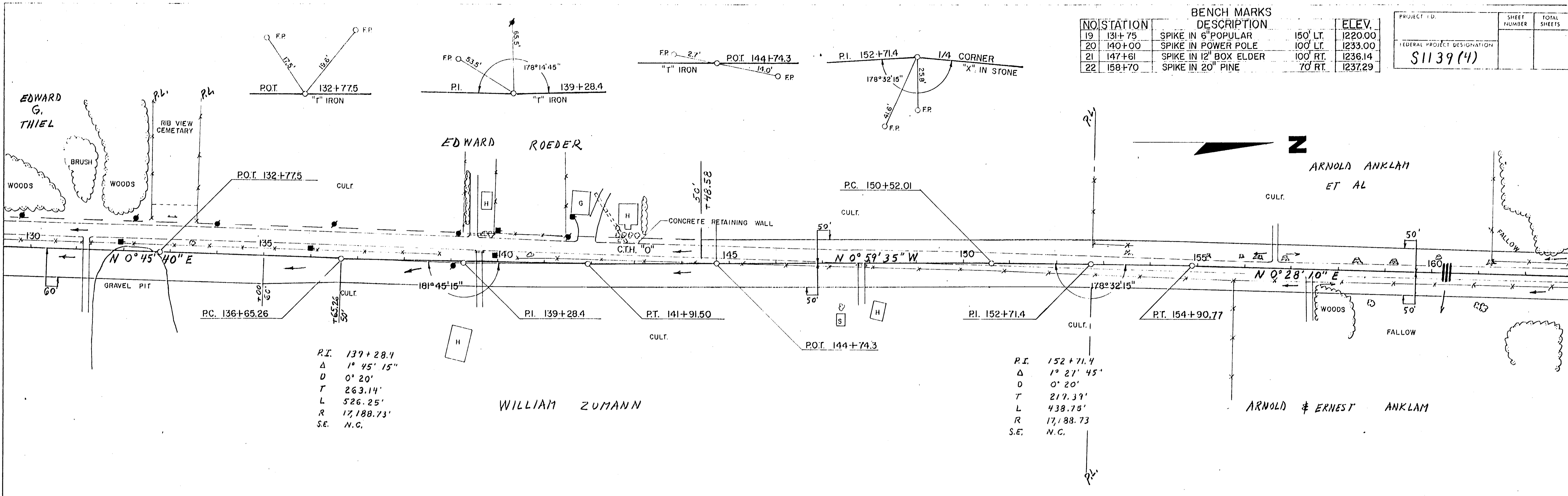
PLATE 1 - PLAN PROFILE OF ROAD STANDARDS

NO.	STATION	DESCRIPTION	ELEV.
19	131+75	SPIKE IN 6" POPULAR	1220.00
20	140+00	SPIKE IN POWER POLE	1233.00
21	147+61	SPIKE IN 12" BOX ELDER	1236.14
22	158+70	SPIKE IN 20" PINE	1237.29

PROJECT I.D.	SHEET NUMBER	TOTAL SHEETS
FEDERAL PROJECT DESIGNATION		
S1139(4)		

PLAN  
 DRAWING NO. 8-53  
 DATE 11-53  
 M.T.W. D.N.  
 NOTE BOOK NO. 11-53  
 CHECKED BY: [Signature]  
 STRUCTURE NOTATIONS CHECKED

PROFILE  
 DRAWING NO. 8-53  
 DATE 11-53  
 M.T.W. D.N.  
 NOTE BOOK NO. 11-53  
 CHECKED BY: [Signature]  
 STRUCTURE NOTATIONS CHECKED



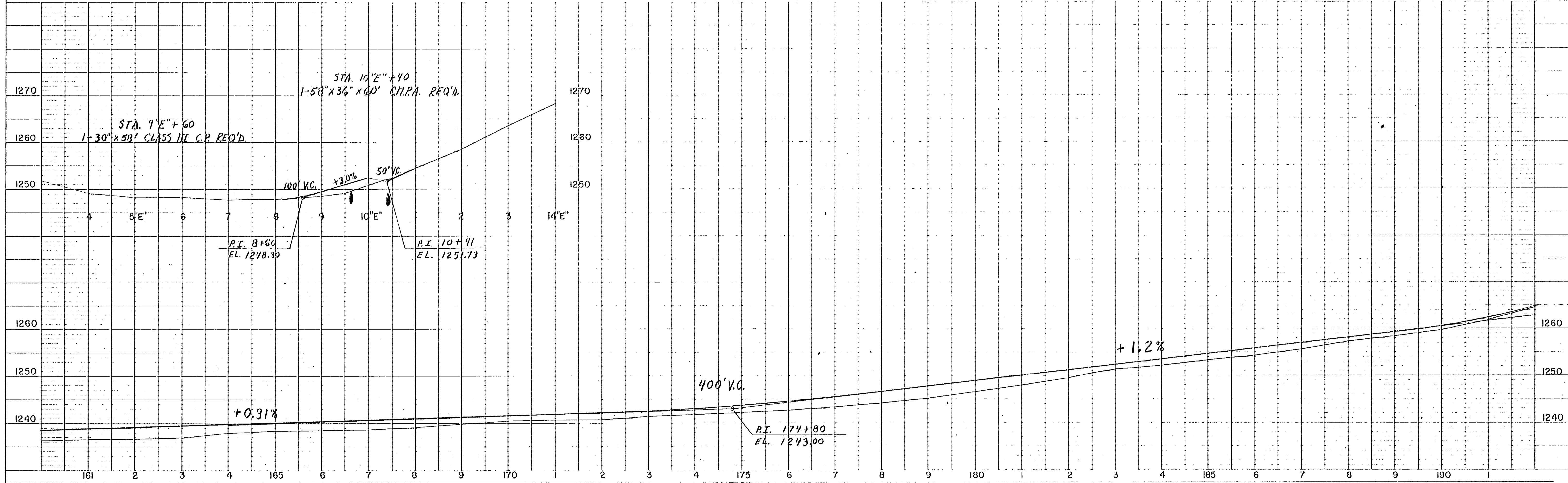
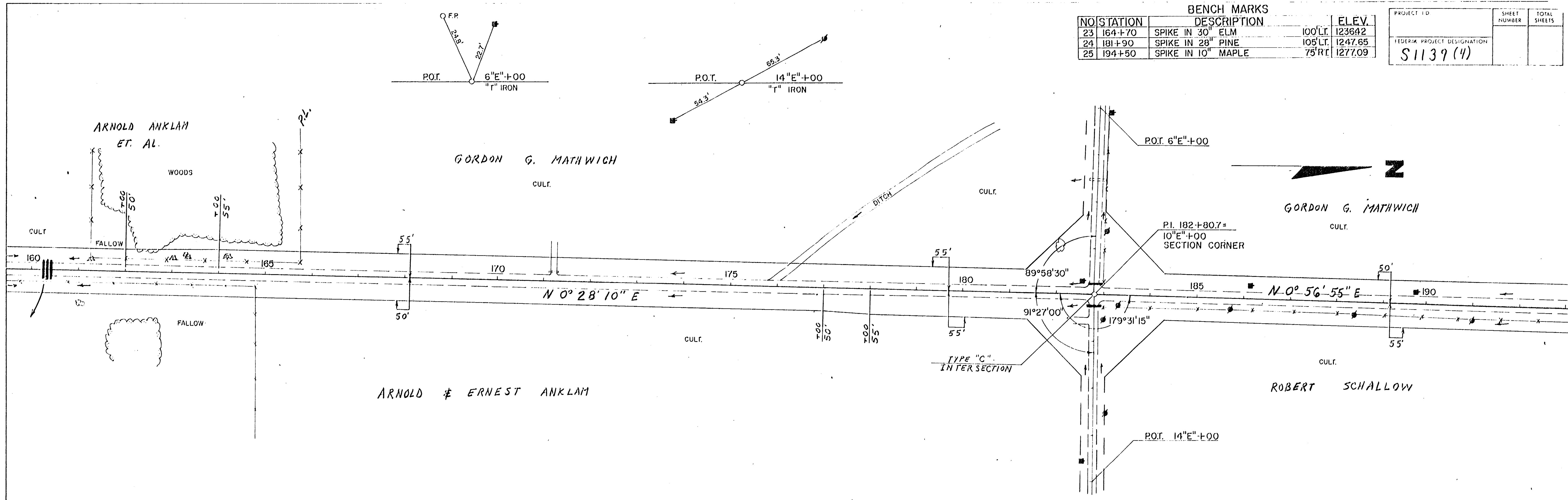


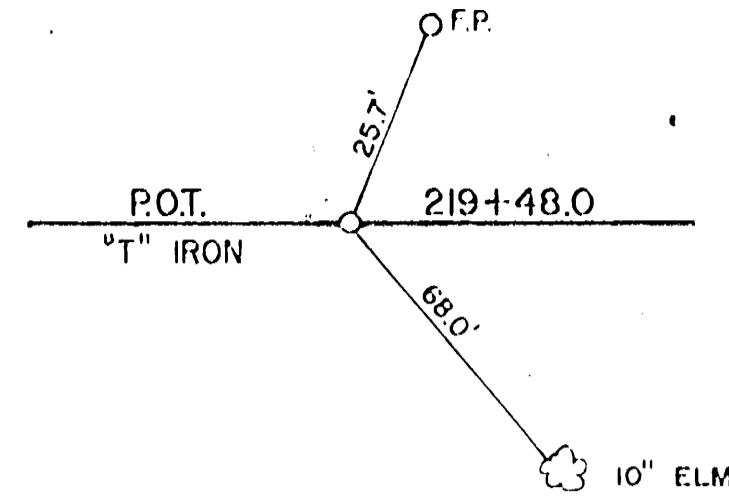
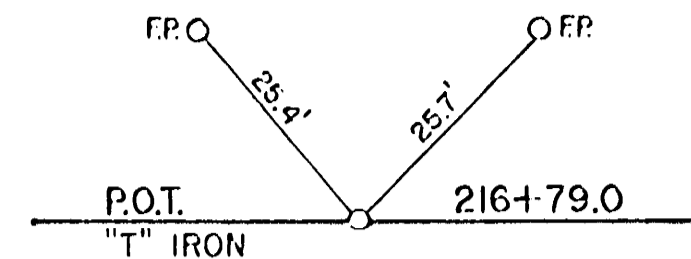
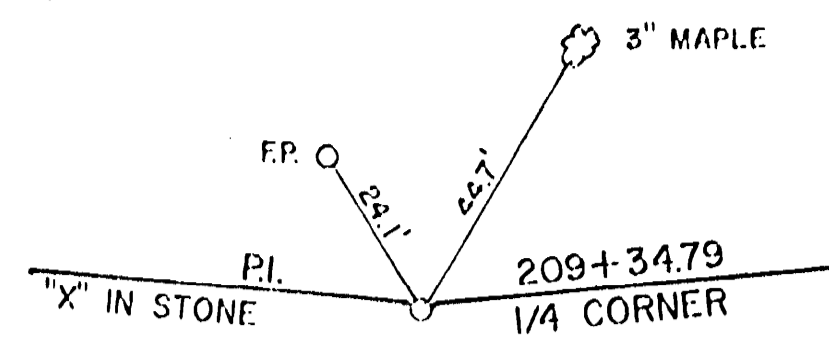
DATE: 11-68  
 DRAWN BY: J.M.  
 CHECKED BY: J.M.  
 PLAN  
 NOTE BOOK: CHAS. CHICKS  
 No. L.L. STRUCTURE NOTATIONS CIRCLED

DATE: 11-68  
 DRAWN BY: J.M.  
 CHECKED BY: J.M.  
 PROFILE  
 NOTE BOOK: CHAS. CHICKS  
 No. L.L. STRUCTURE NOTATIONS CIRCLED

BENCH MARKS			
NO.	STATION	DESCRIPTION	ELEV.
23	164+70	SPIKE IN 30" ELM	100'LT. 12364.2
24	181+90	SPIKE IN 28" PINE	105'LT. 1247.65
25	194+50	SPIKE IN 10" MAPLE	75'RT. 1277.09

PROJECT ID	SHEET NUMBER	TOTAL SHEETS
FEDERAL PROJECT DESIGNATION S1139(4)		





NO.	STATION	DESCRIPTION	ELEV.
25	194+00	SPIKE IN 10" MAPLE	75' RT. 1277.09
26	200+40	SPIKE IN 30" ASH	75' RT. 1304.79
27	209+34	SPIKE IN 10" ELM	130' LT. 1348.21
28	214+90	SPIKE IN 30" ELM	110' RT. 1398.24
29	219+50	SPIKE IN 10" ELM	130' LT. 1410.63

PROJECT NO.	SHEET NUMBER	TOTAL SHEETS
FEDERAL PROJECT DESIGNATION		
S 1139(4)		

PLAN  
 SURVEYED  
 PLOTTED  
 NOTE BOOK CHECKED  
 No. L.L. STRUCTURE NOTATIONS CHECKED

PROFILE  
 SURVEYED  
 PLOTTED  
 NOTE BOOK CHECKED  
 No. L.L. STRUCTURE NOTATIONS CHECKED

