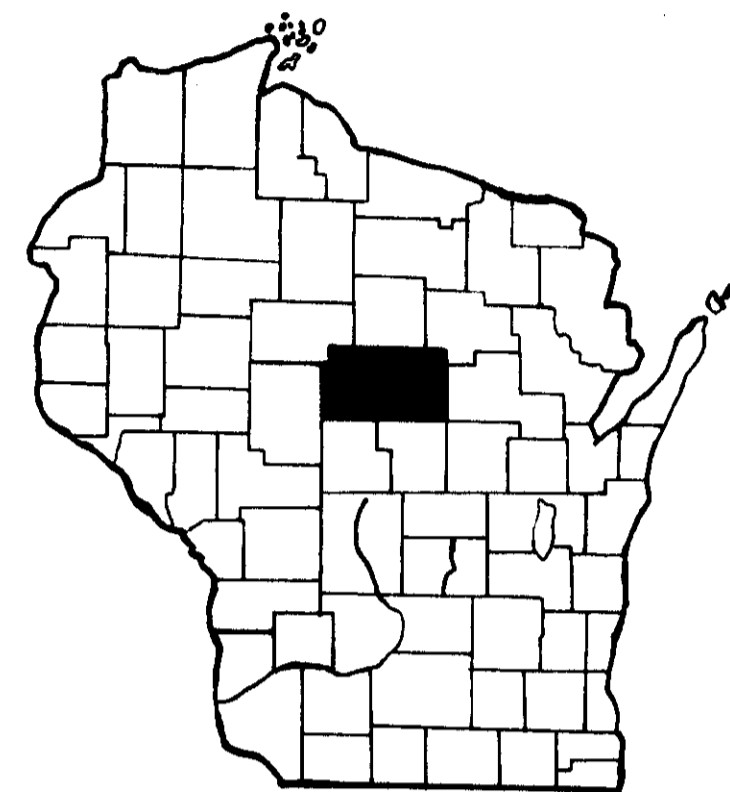
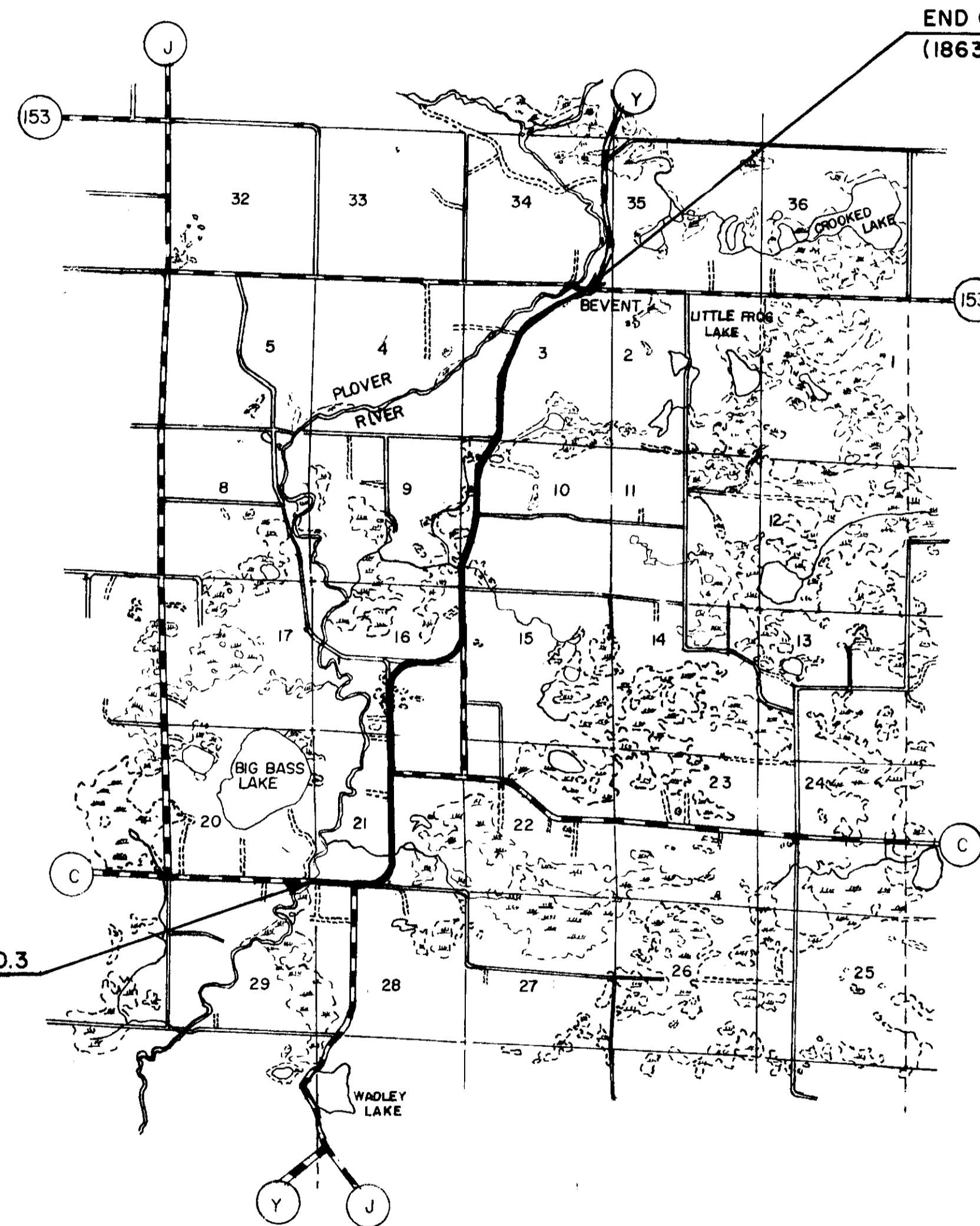


MARATHON COUNTY HIGHWAY DEPARTMENT

PLAN AND PROFILE OF PROPOSED PLOVER RIVER TO BEVENT C.T.H. "Y"

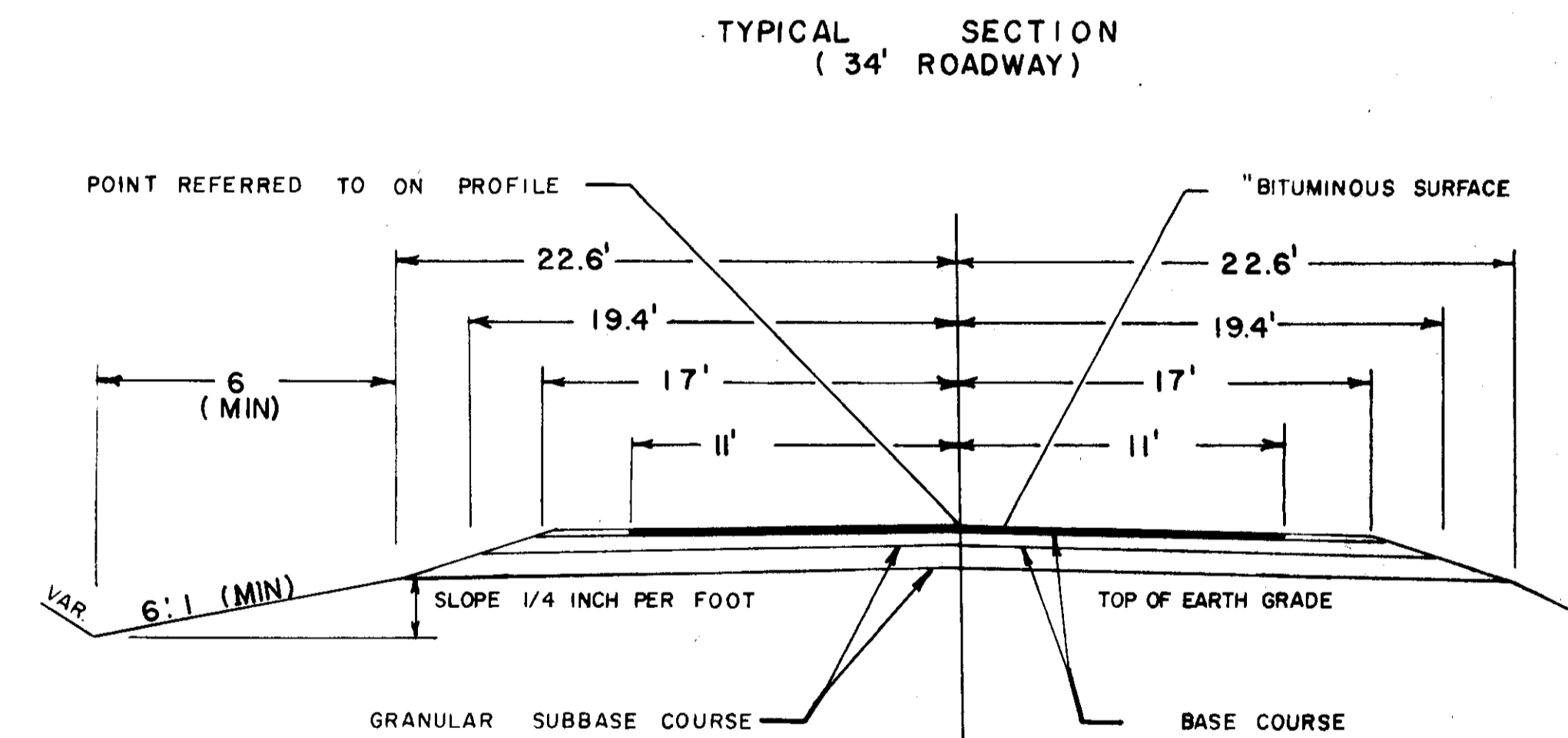


	BEN	WALSH	HAMBURG	BERLIN	MAINE	TEXAS	HEWITT	HARRISON
HOLTON	JOHNSON	RIEBROOK	RIB FALLS	STETTIN		WAUSAU	EASTON	PLOVER
HULL	FRANKFORT	WIEN	CASSEL	MARATHON	NORSE RIB MT.	WESTON	RINGO	NORRIE
BRIGHTON	EAU PLENE	CLEVELAND	EMMET		KRONENWETTER	REID	ELDERON	
SPENCER	MCNILLAN	DAY	GREEN VALLEY	BERGEN	ANWILTON	QUANTNER	FRANZEN	



BEGINNING OF PROJECT STATION 1+80.3
(253.8' W. OF SW COR. SECT. 21)

END OF PROJECT STATION 257+44.46
(1863.9' W. & 1021.2' S. OF NE COR. SECT. 3)



LEGEND

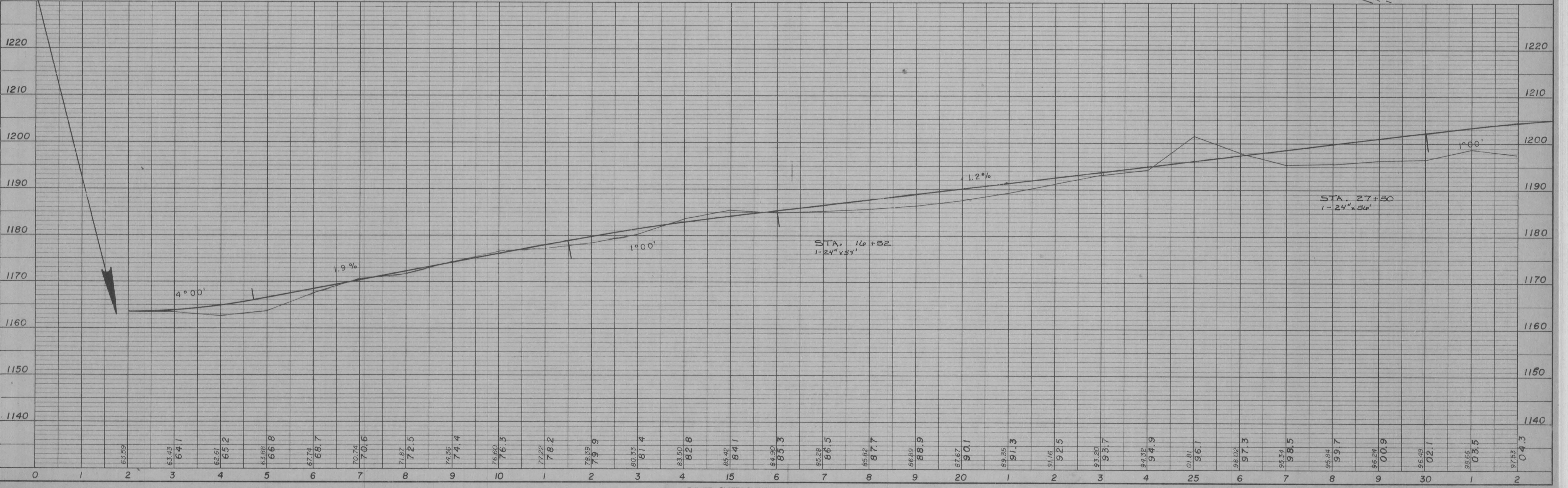
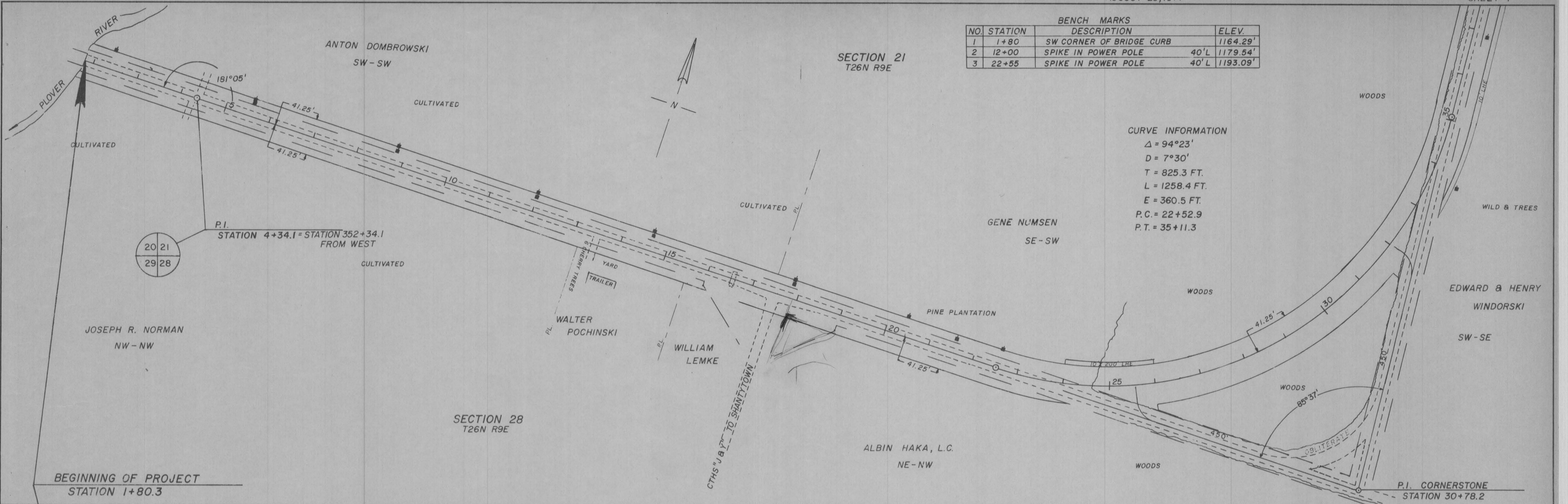
NEW RIGHT-OF-WAY	—————
PRESENT RIGHT-OF-WAY	-----
PROPERTY LINE	PL -----
WELL	⊠
TELEPHONE CABLE	— T — T —
POWER CABLE	— P — P —
GAS LINE	— G — G —
POWER POLE	⬢
TELEPHONE POLE	⬤
TELEPHONE PEDESTAL	⬢
GUY POLE	○
TRANSMISSION TOWER & LINE	⊗
FENCE	— x — x —
TRAVELED WAY	-----

SCALE = 1" = 100'
NET LENGTH OF CENTERLINE = 4.84 MI.

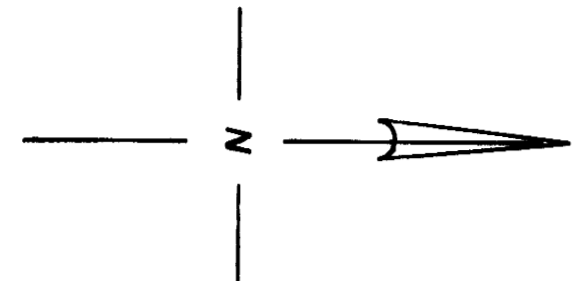
DESIGNER _____	DATE _____
APPROVED _____	DATE _____

BENCH MARKS			
NO.	STATION	DESCRIPTION	ELEV.
1	1+80	SW CORNER OF BRIDGE CURB	1164.29'
2	12+00	SPIKE IN POWER POLE	40' L 1179.54'
3	22+55	SPIKE IN POWER POLE	40' L 1193.09'

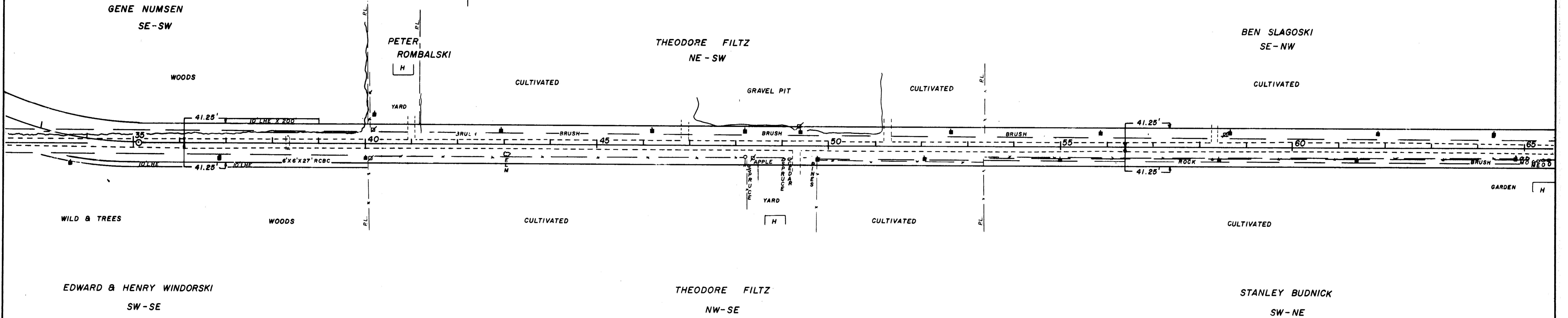
CURVE INFORMATION
 $\Delta = 94^{\circ}23'$
 $D = 7^{\circ}30'$
 $T = 825.3 \text{ FT.}$
 $L = 1258.4 \text{ FT.}$
 $E = 360.5 \text{ FT.}$
 $P.C. = 22+52.9$
 $P.T. = 35+11.3$



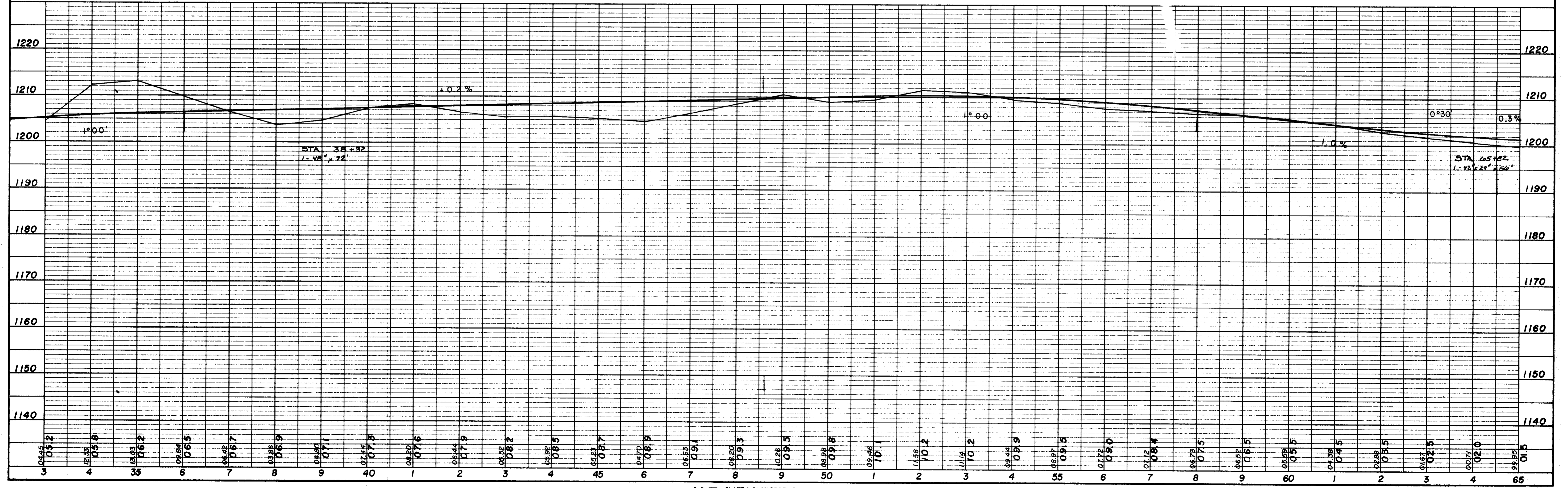
BENCH MARKS			
NO.	STATION	DESCRIPTION	ELEV.
4	36+50	SPIKE IN 8" CHERRY	65'R 1210.49'
5	49+75	SPIKE IN 8" PINE	45'R 1210.54'



SECTION 21
T26N R9E



SECTION 21
T26N R9E



1" = 100'

STRUCTURE INDICATIONS CHECKED

BENCH MARKS			
NO.	STATION	DESCRIPTION	ELEV.
6	66+90	SPIKE IN POWER POLE 4' L	1200.10'
7	79+70	SPIKE IN 14" CHERRY 150' R	1178.16'
8	94+35	SPIKE IN 6" TAMRACK 85' L	1172.16'

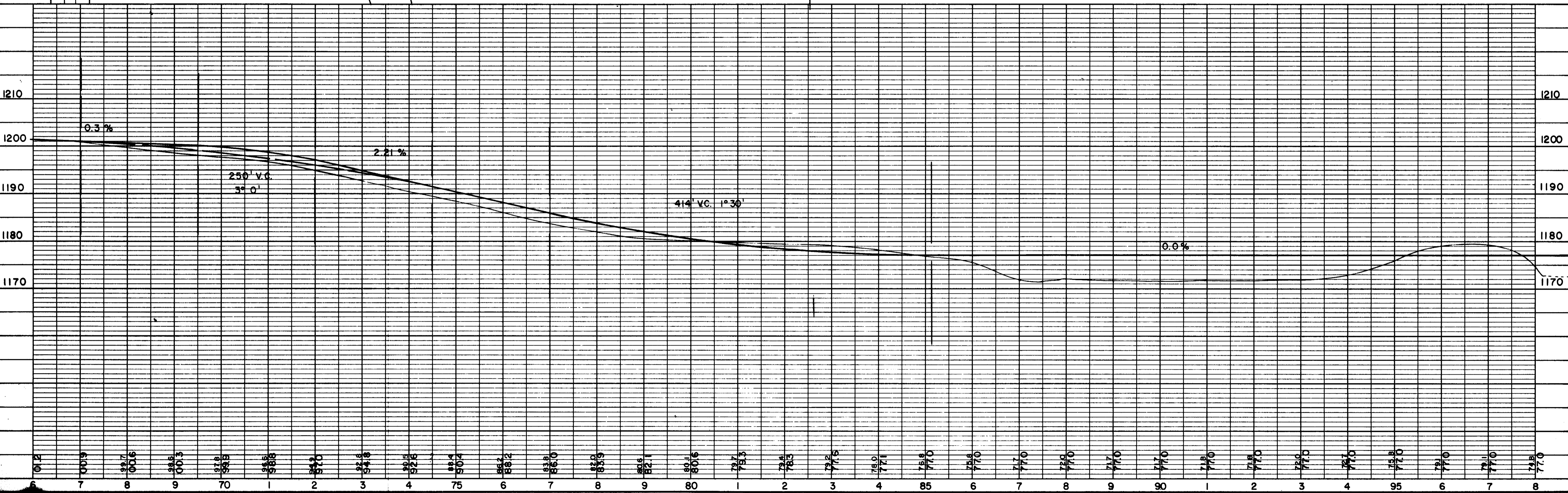
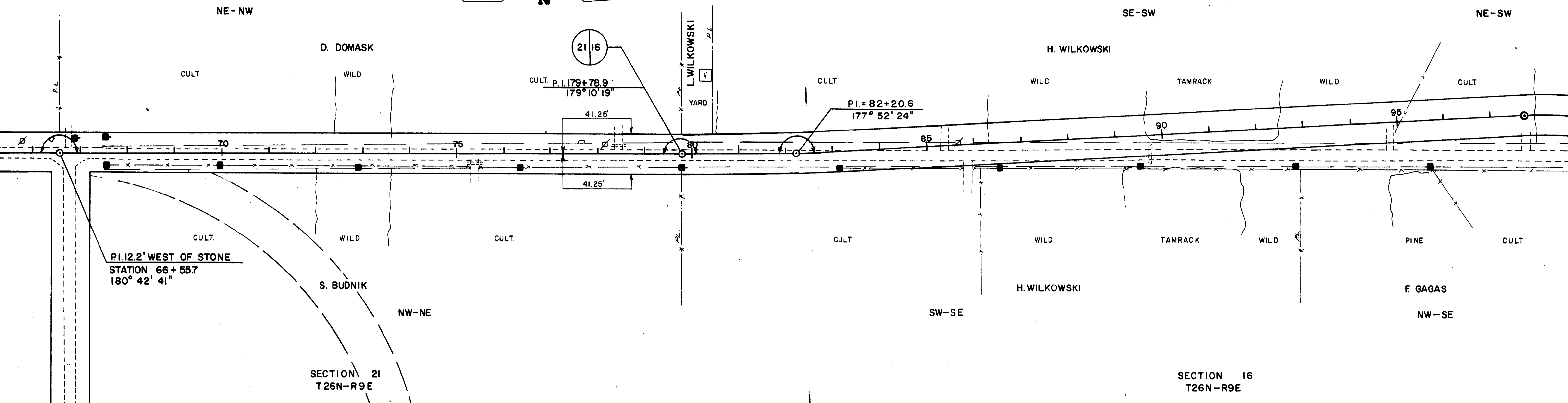
SECTION 21
T26N-R9E

SECTION 16
T26N-R9E

NE-NW

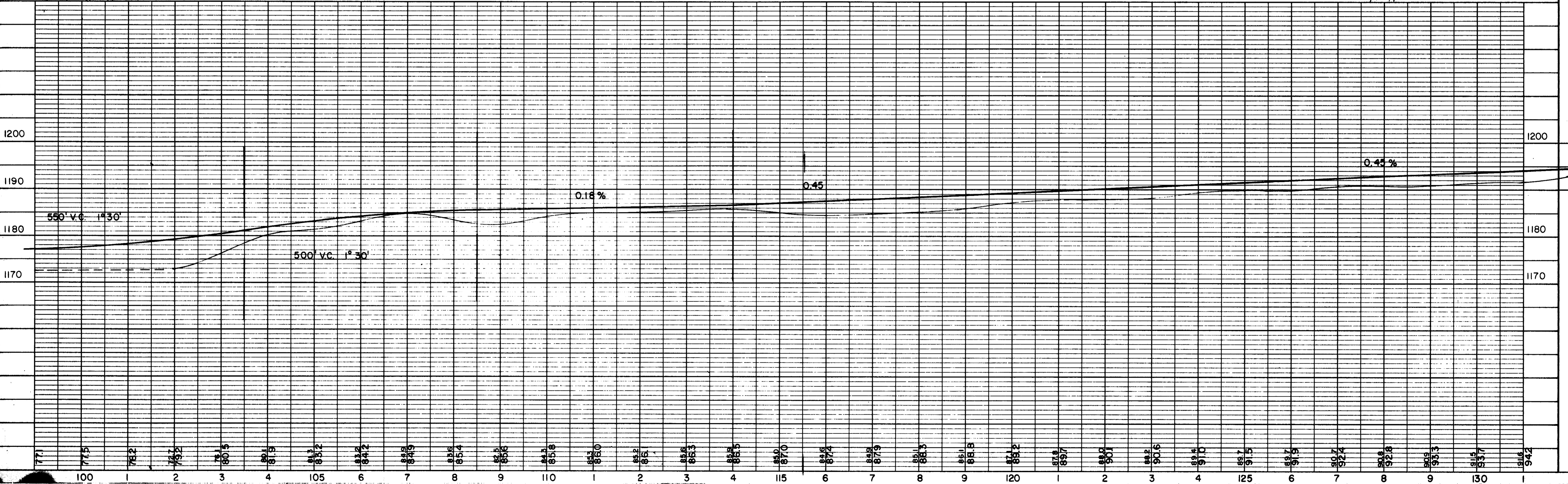
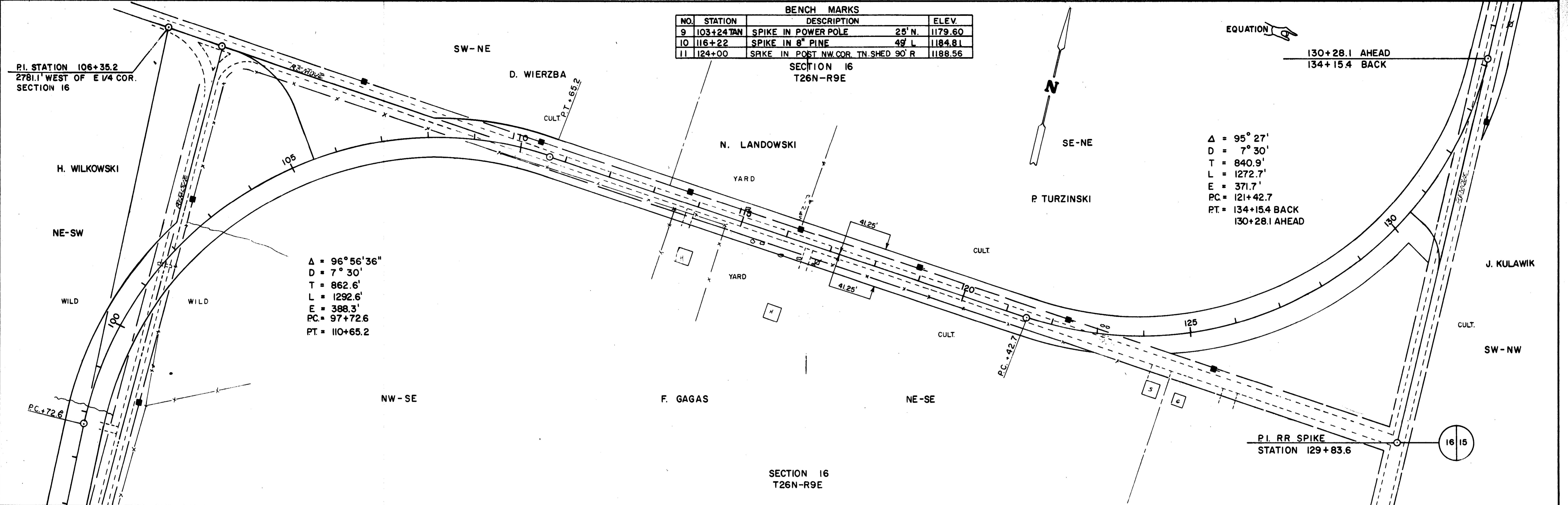
SE-SW

NE-SW

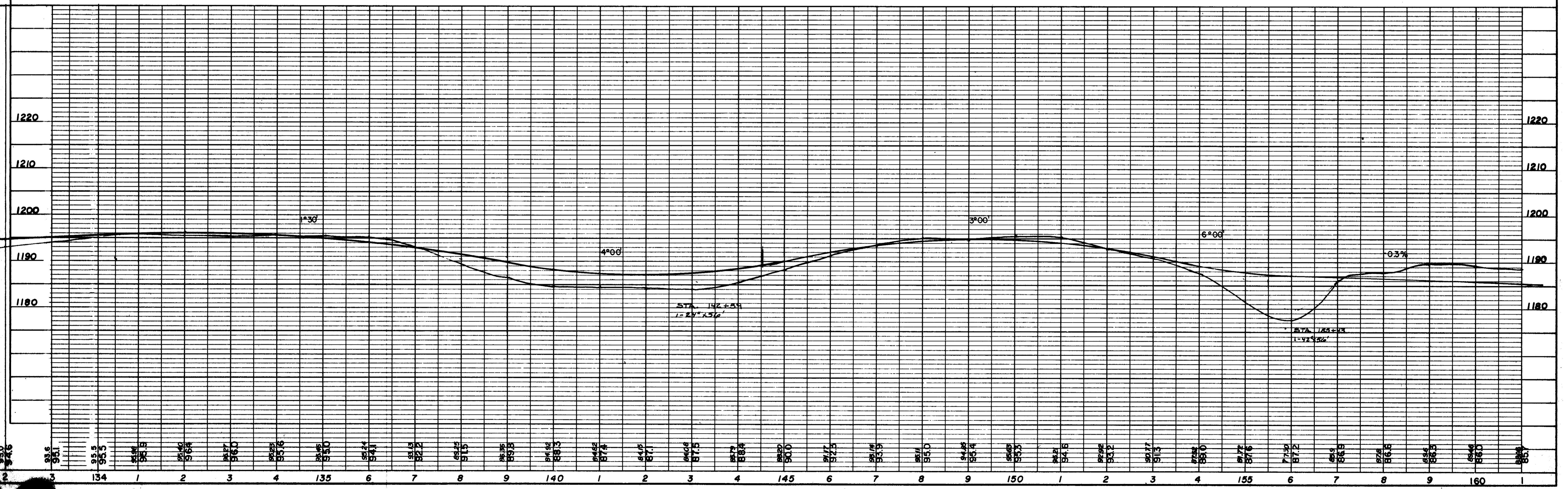
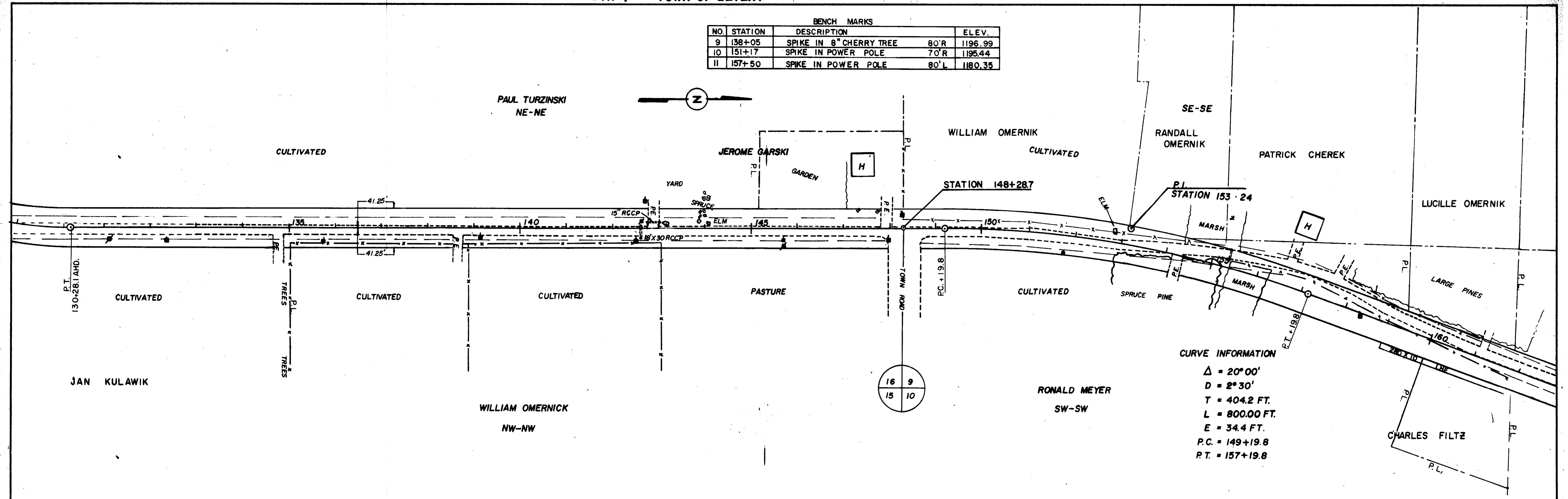


BENCH MARKS			
NO.	STATION	DESCRIPTION	ELEV.
9	103+24 TAN	SPIKE IN POWER POLE 25' N.	1179.60
10	116+22	SPIKE IN 8" PINE 45' L	1184.81
11	124+00	SPIKE IN POST NW COR. TN. SHED 90' R	1188.56

SECTION 16
T26N-R9E

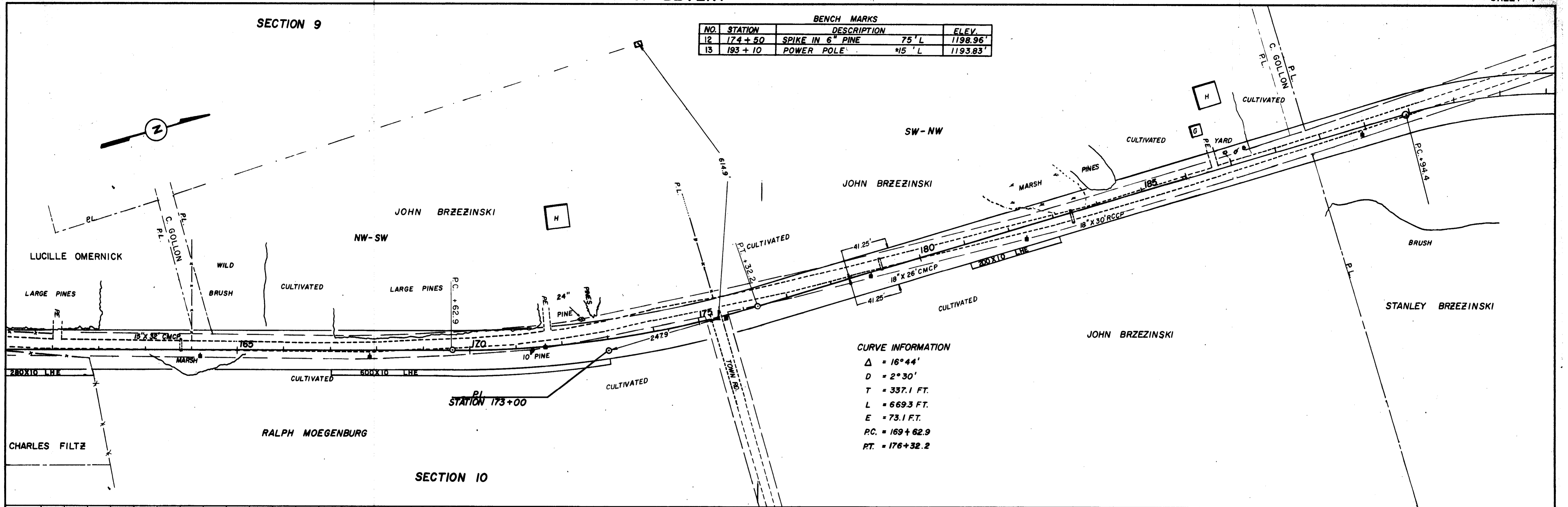


BENCH MARKS			
NO.	STATION	DESCRIPTION	ELEV.
9	138+05	SPIKE IN 8" CHERRY TREE 80'R	1196.99
10	151+17	SPIKE IN POWER POLE 70'R	1195.44
11	157+50	SPIKE IN POWER POLE 80'L	1180.35

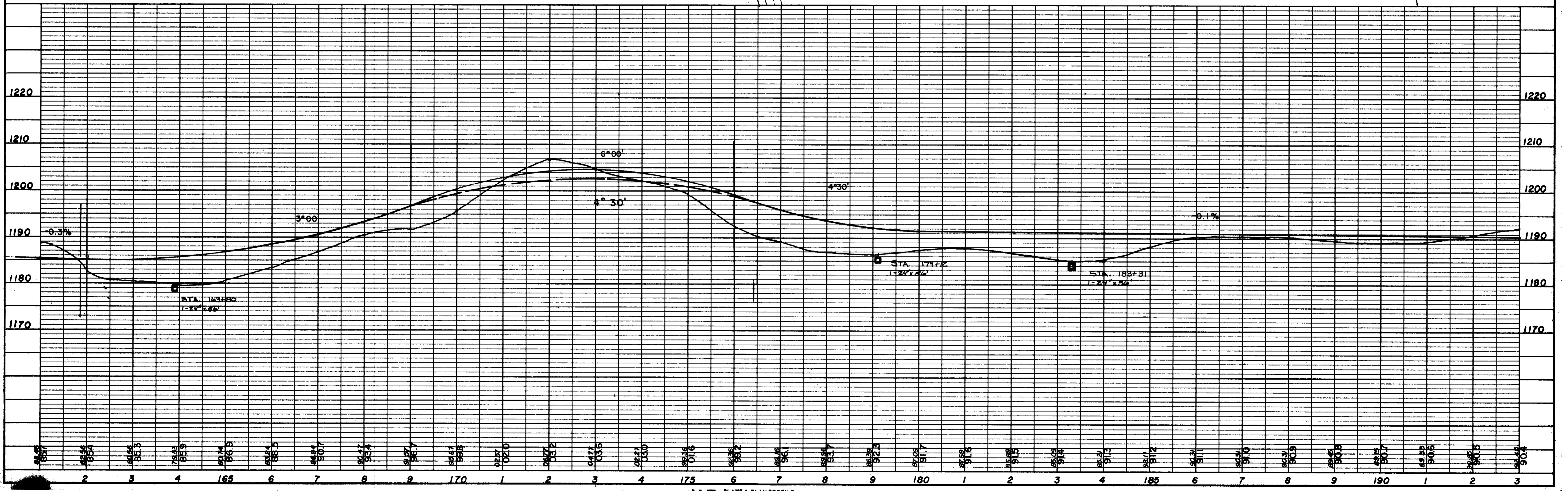


SECTION 9

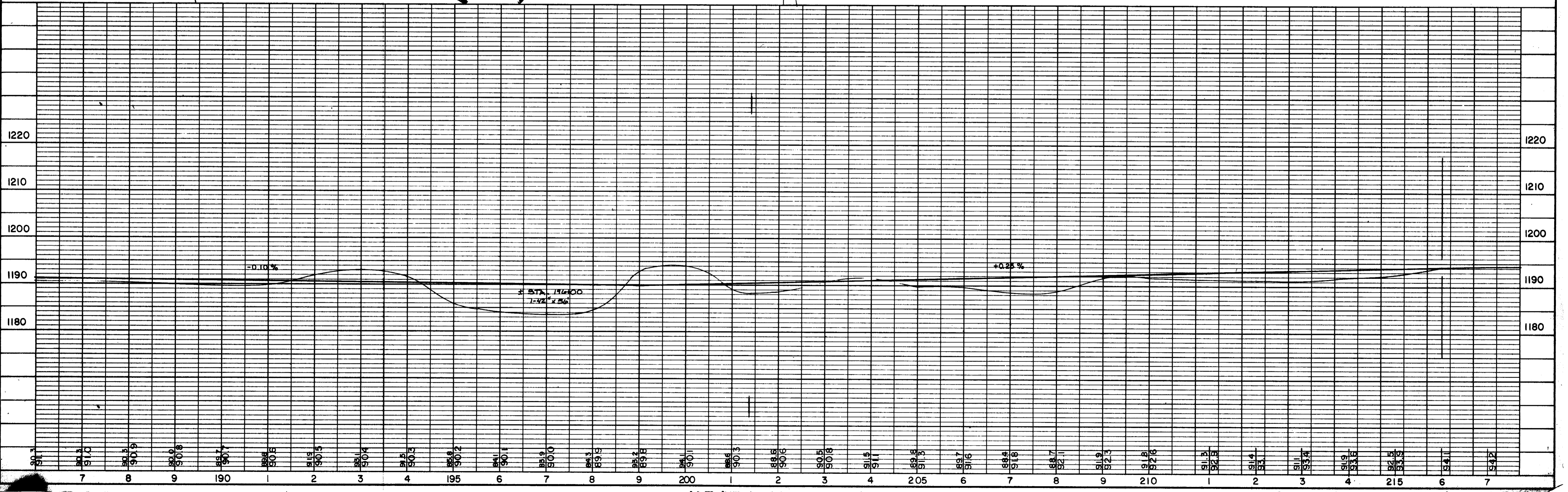
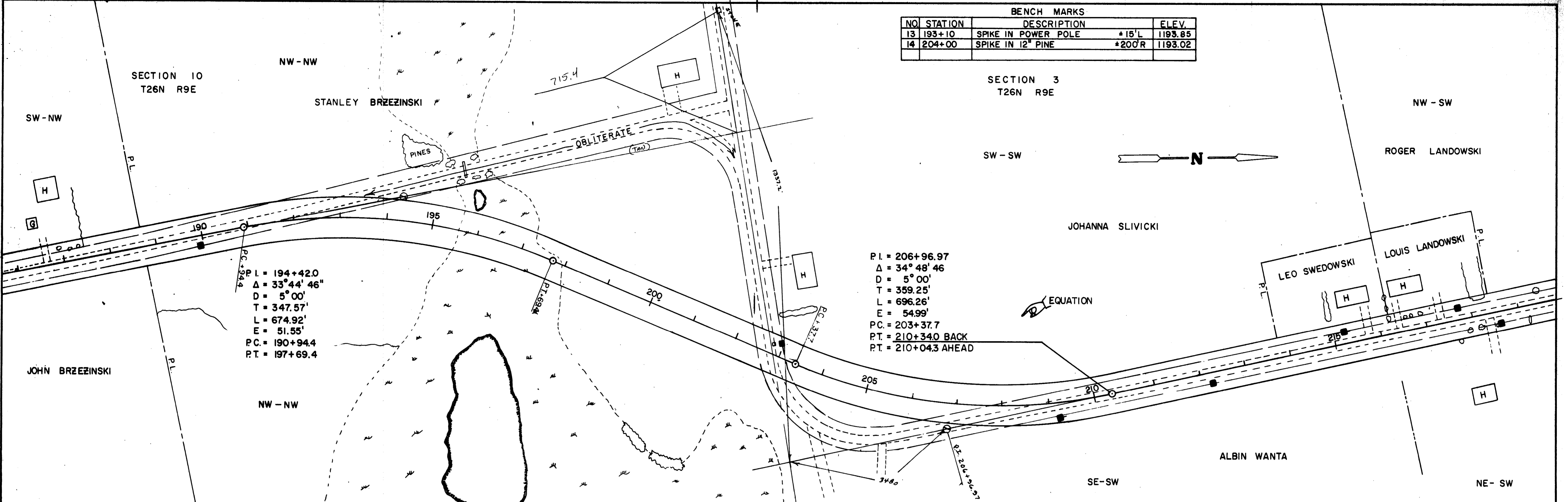
BENCH MARKS			
NO.	STATION	DESCRIPTION	ELEV.
12	174+50	SPIKE IN 6" PINE 75' L	1198.96'
13	193+10	POWER POLE 45' L	1193.83'



CURVE INFORMATION
 $\Delta = 16^{\circ}44'$
 $D = 2^{\circ}30'$
 $T = 337.1 \text{ FT.}$
 $L = 669.3 \text{ FT.}$
 $E = 73.1 \text{ FT.}$
 $P.C. = 169+62.9$
 $P.T. = 176+32.2$



BENCH MARKS			
NO	STATION	DESCRIPTION	ELEV.
13	193+10	SPIKE IN POWER POLE	+15'L 1193.85
14	204+00	SPIKE IN 12" PINE	+200'R 1193.02



BENCH MARKS			
NO.	STATION	DESCRIPTION	ELEV.
14	203+50	SPIKE IN 12" PINE	1193.02
15	226+50	SPIKE IN POWER POLE	1194.53

NW-NE



STANLEY BREZINSKI

SW-SW

JOHANNA SLIVICKI

NW-SW

ROGER LANDOWSKI

LORRINE DRYFKA

CURVE INFORMATION

$\Delta = 52^{\circ}16'$
 $D = 3^{\circ}00'$
 $T = 652.5'$
 $L = 1075.5'$
 $E = 78.3'$
 $P.C. = 199+37.0$
 $P.T. = 210+12.6$

LEO SWEDOWSKI

LOUIS LANDOWSKI

H

H

NE-NE

SE-SW

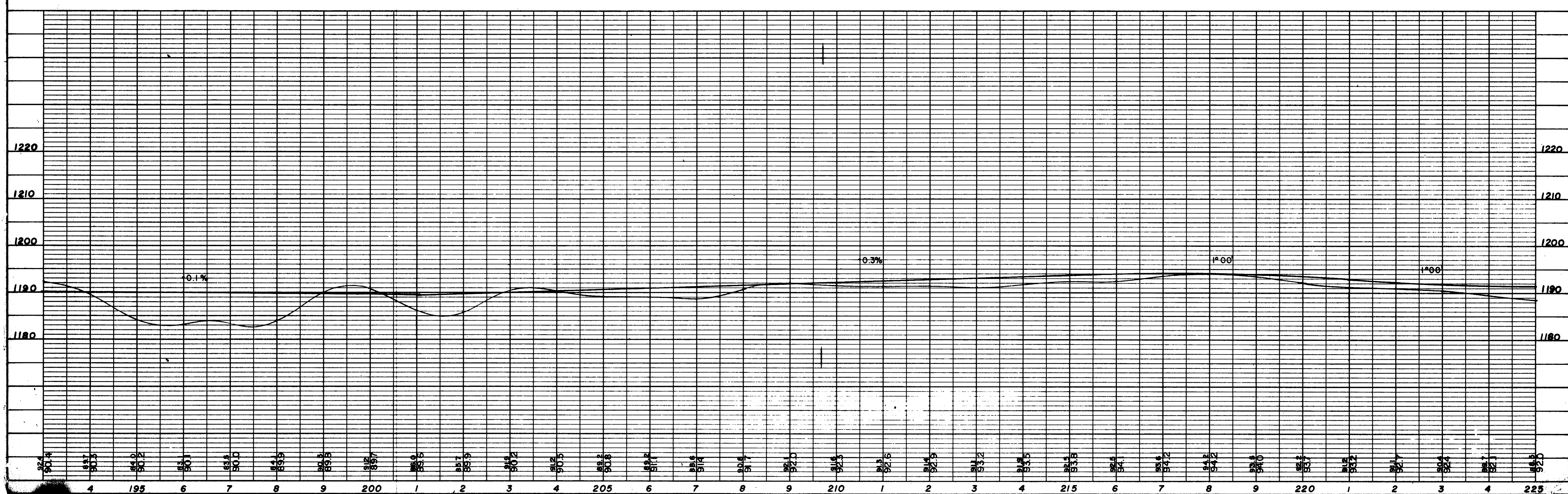
ALBIN WANTA

NE-SW

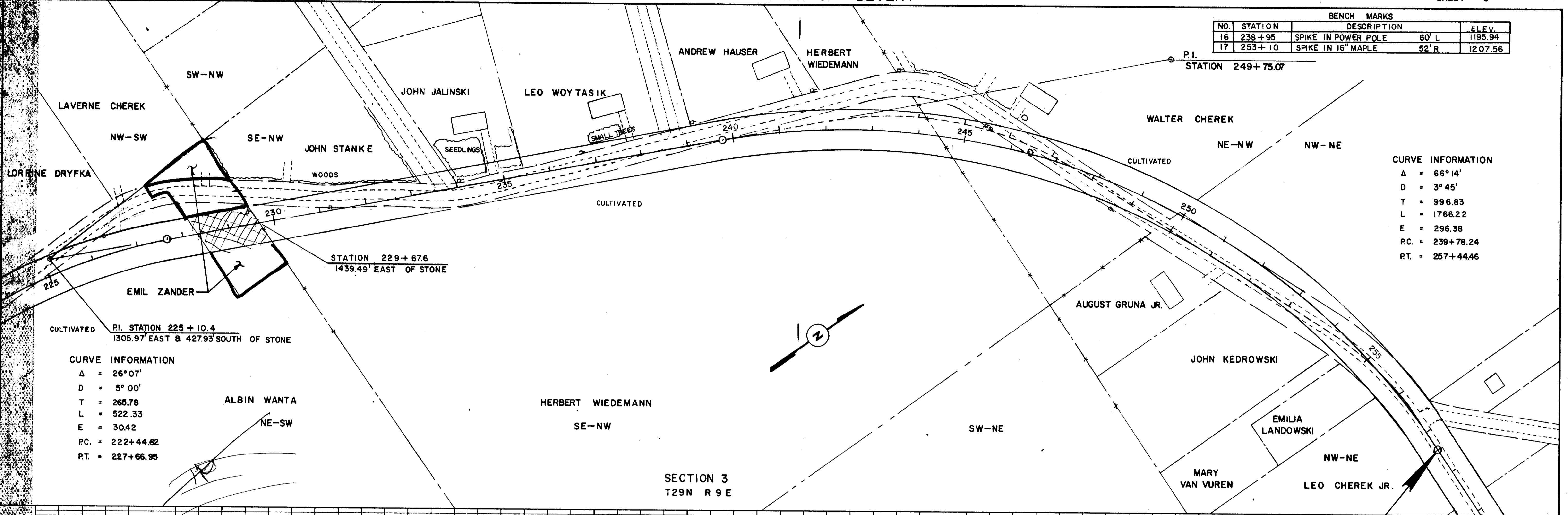
H

SECTION 10
T26 N R9E

SECTION 3
T26 N R9E



BENCH MARKS		DESCRIPTION		ELEV.
NO.	STATION			
16	238+95	SPIKE IN POWER POLE	60' L	1195.94
17	253+10	SPIKE IN 16" MAPLE	52' R	1207.56



CURVE INFORMATION

Δ	= 66° 14'
D	= 3° 45'
T	= 996.83
L	= 1766.22
E	= 296.38
PC.	= 239+78.24
PT.	= 257+44.46

CURVE INFORMATION

Δ	= 26° 07'
D	= 5° 00'
T	= 265.78
L	= 522.33
E	= 30.42
PC.	= 222+44.62
PT.	= 227+66.95

STATION 229+67.6
1439.49' EAST OF STONE

CULTIVATED P.I. STATION 225+10.4
1305.97' EAST & 427.93' SOUTH OF STONE

SECTION 3
T29N R9E

END OF PROJECT
STATION 257+44.46

