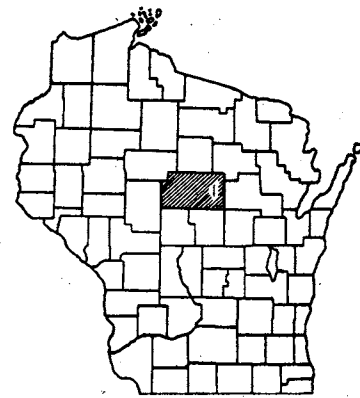


INDEX OF SHEETS

SHEET NO. 1	TITLE
SHEET NO. 1 & 2	TYPICAL CROSS SECTIONS
SHEET NO. 2	ESTIMATE OF QUANTITIES
SHEET NO. -	MISCELLANEOUS QUANTITIES
SHEET NO. -	RIGHT OF WAY PLAT
SHEET NO. 3-9	PLAN AND PROFILE STA. 39 + 44.2 TO STA. 229 + 70.0
SHEET NO. 10	STANDARD DETAILS
SHEET NO. -	DRAINAGE STRUCTURES
SHEET NO. -	CROSS SECTIONS



STATE OF WISCONSIN
STATE HIGHWAY COMMISSION OF WISCONSIN

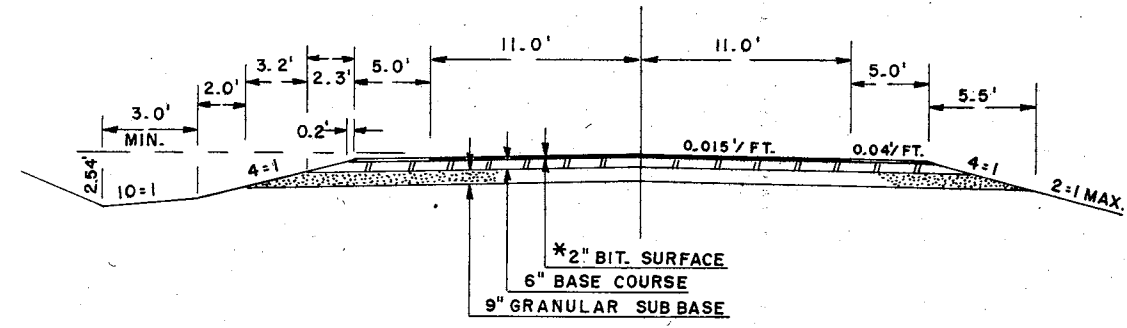
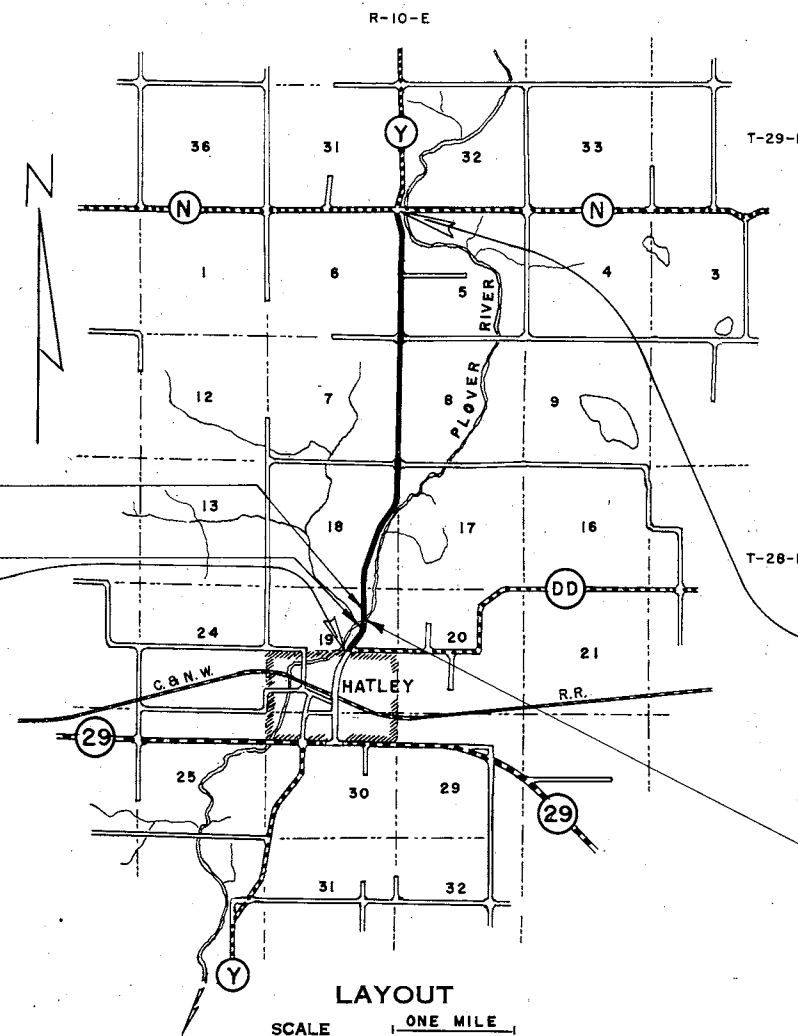
COUNTY AND HIGHWAY	ROUTE AND SECTION	CLASS AND AGREEMENT		FEDERAL DIVISION OFFICE	SHEET NUMBER	TOTAL SHEETS
		STATE	FEDERAL			
37.6	1169.0		13.3	WIS. 4	1	10

PLAN AND PROFILE OF PROPOSED
HATLEY — C.T.H. "N" ROAD
MARATHON COUNTY
PROJECT S1169 (3)

C.T.H. "Y"

SCALES { PLAN 1 IN. = 100 FT.
PROFILE HOR. 1 IN. = 100 FT. VERT. 1 IN. = 10 FT.

APPROVED FOR
Marathon County
6/29/65 Date
[Signature] Title
County Highway Commissioner



STA. 57 + 83.7 =
STA. 39 + 21.0, END OF PROJ. S1169(1)

STA. 46 + 62.7 =
STA. 28 + 00.0, BEG. OF PROJ. S1169(1)

BEGINNING OF PROJECT S1169(3)
STA. 39 + 44.2 =
457.5' EAST OF THE CENTER OF SEC. 19, T28 N, R10 E

END OF PROJECT S 1169(3)
STA. 229 + 70.0
= 172' W. & 31.4' S. OF NW COR. SEC. 5

EXCEPTION TO NET LENGTH OF CENTERLINE
STA. 53 + 63.0 TO STA. 54 + 14.5

LAYOUT
SCALE 1" = ONE MILE
TOTAL NET LENGTH OF CENTERLINE = 3.593 MI.

CONVENTIONAL SIGNS

STATE LINE.....	CULVERTS IN PLACE.....
COUNTY LINE.....	CULVERTS REQUIRED.....
TOWNSHIP OR RANGE LINE.....	DROP INLET.....
SECTION LINE.....	POWER POLE.....
NEW RIGHT OF WAY LINE.....	TELEPHONE OR TELEGRAPH POLE.....
PRESENT RIGHT OF WAY LINE.....	RIGHT OF WAY MARKERS.....
WIRE FENCE { WOVEN.....	REFERENCE STAKE FOR HUBS ONLY.....
BARBED.....	MARSH.....
LOT LINE.....	HEDGE.....
CORPORATE OR CITY LIMITS.....	TREES.....
PROPERTY LINE.....	
TRAVELED WAY OR P.E.....	
RAILROADS.....	
BASE OR SURVEY LINE.....	
	GROUND ELEVATION..... DATUM LINE 739
	GRADE ELEVATION..... DATUM LINE 7316

* NOT PART OF THIS CONTRACT

STATE HIGHWAY COMMISSION OF WISCONSIN
MADISON, WISCONSIN

SURVEYOR CEC NOTE BOOK M-67
DISTRICT COMPUTER M. O. CHECKER W.H.B.
DISTRICT CHECKER CORRECT

CORRECT:
DATE 5-28-65 [Signature] ACT. DISTRICT ENGINEER

RECOMMENDED FOR APPROVAL:
DATE 6/6/65 [Signature] CHIEF DESIGN ENGINEER

APPROVED:
DATE 6/4/65 [Signature] STATE HIGHWAY ENGINEER

DEPARTMENT OF COMMERCE
BUREAU OF PUBLIC ROADS

APPROVED: [Signature] DATE []
DISTRICT ENGINEER

ESTIMATE OF QUANTITIES

CONTRACT NO. 1

PROJECT	SHEET NUMBER	TOTAL SHEETS
S1169(3)	2	10

THIS PROJECT IS TO BE EXECUTED UNDER THE STANDARD SPECIFICATIONS FOR ROAD AND BRIDGE CONSTRUCTION OF THE STATE HIGHWAY COMMISSION OF WISCONSIN — EDITION OF 1963, APPROVED OCT. 16, 1963. FEDERAL AID REQUIRED CONTRACT PROVISIONS APPROVED OCT. 29, 1963, AND SPECIAL PROVISIONS AS ATTACHED TO PROPOSAL

STATION TO STATION	NET LENGTH OF CENTER LINE	ITEM NO.	GRANULAR SUBBASE COURSE	GRAVEL OR CRUSHED STONE BASE COURSE	PRODUCING AND STOCKPILING GRAVEL OR CRUSHED STONE BASE COURSE	PRODUCING AND STOCKPILING AGGREGATE FOR BITUMINOUS ROAD MIX SURFACE	FIELD OFFICE											
							90001	2523	2523-3	2523-4	2528-1	2528-2	2531-1	2532-1				
UNIT	LIN. FT.		C.Y.	TON	TON	TON	LIN. FT.	LIN. FT.	LIN. FT.	LIN. FT.	L.S.	LIN. FT.	EACH	EACH	SQ. YD.	SQ. YD.	CWT.	SQ. YD.
39 + 44.2 TO 53 + 63.0	18,968.9		25,200	25,820	2,500*	6,100					1							
54 + 14.5 TO 229 + 70.0																		
TOTALS	18,968.9		25,200	25,820	2,500*	6,100					1							

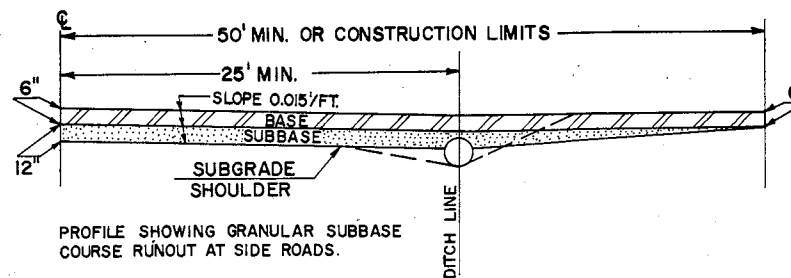
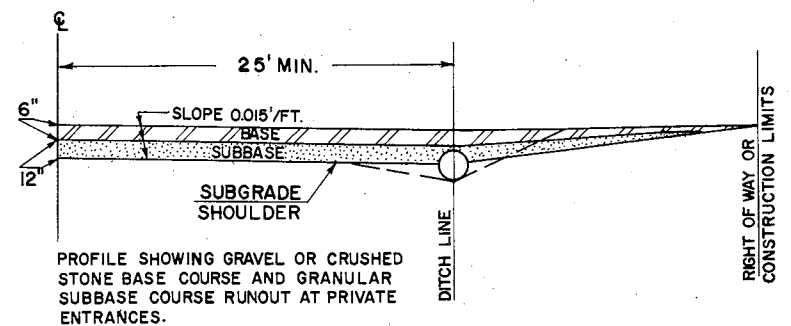
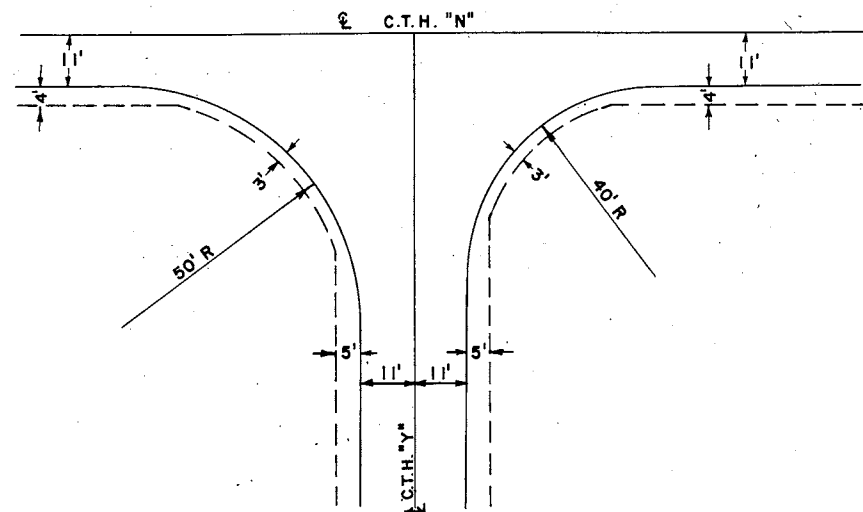
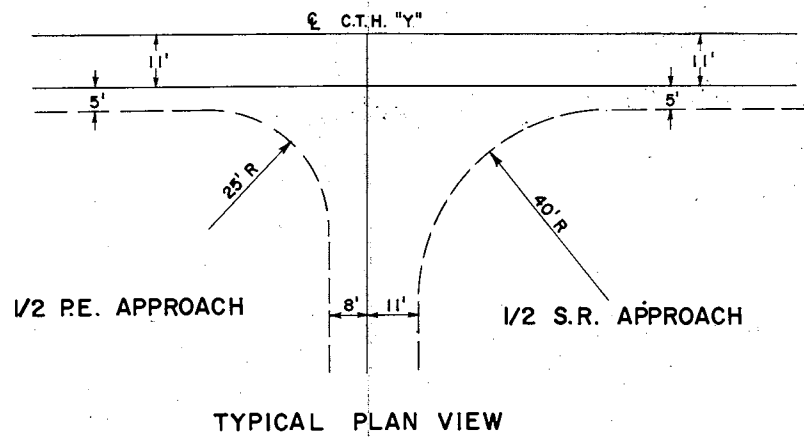
* FOR SHOULDERS

GENERAL NOTE

WHEN THE QUANTITY OF THE ITEMS OF SUBBASE, BASE OR SURFACE COURSE IS MEASURED FOR PAYMENT BY THE TON OR BY CUBIC YARD, THE DEPTH OR THICKNESS OF THE COURSE SHOWN ON THE PLANS IS APPROXIMATE AND THE ACTUAL THICKNESS WILL DEPEND UPON THE DISTRIBUTION OF MATERIAL AS DIRECTED BY THE ENGINEER. SHEETS 3 - 9 INCLUDED TO SHOW PROFILE AND ALIGNMENT ONLY. OTHER INFORMATION NOT PERTINENT TO THIS CONTRACT.

APPLICABLE STANDARD DETAIL DRAWING

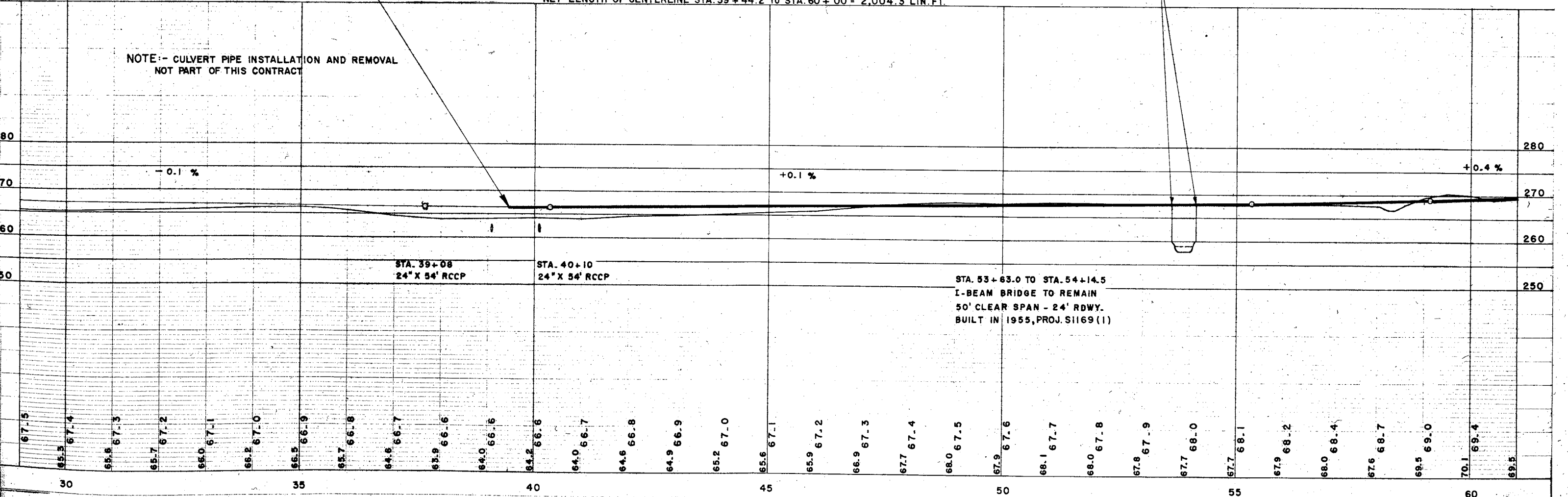
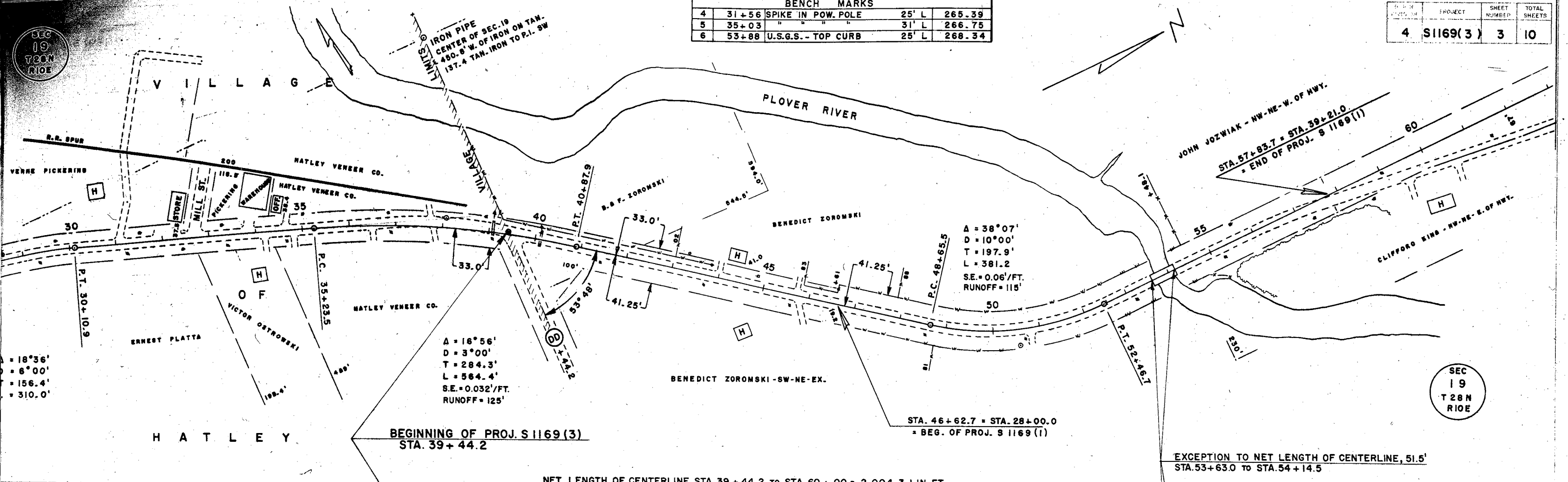
7 - 4.1.4 CONSTRUCTION BARRICADE



SEC 19 T28N R10E

BENCH MARKS				
4	31+56	SPIKE IN POW. POLE	25' L	265.39
5	35+03	"	31' L	266.75
6	53+88	U.S.G.S. - TOP CURB	25' L	268.34

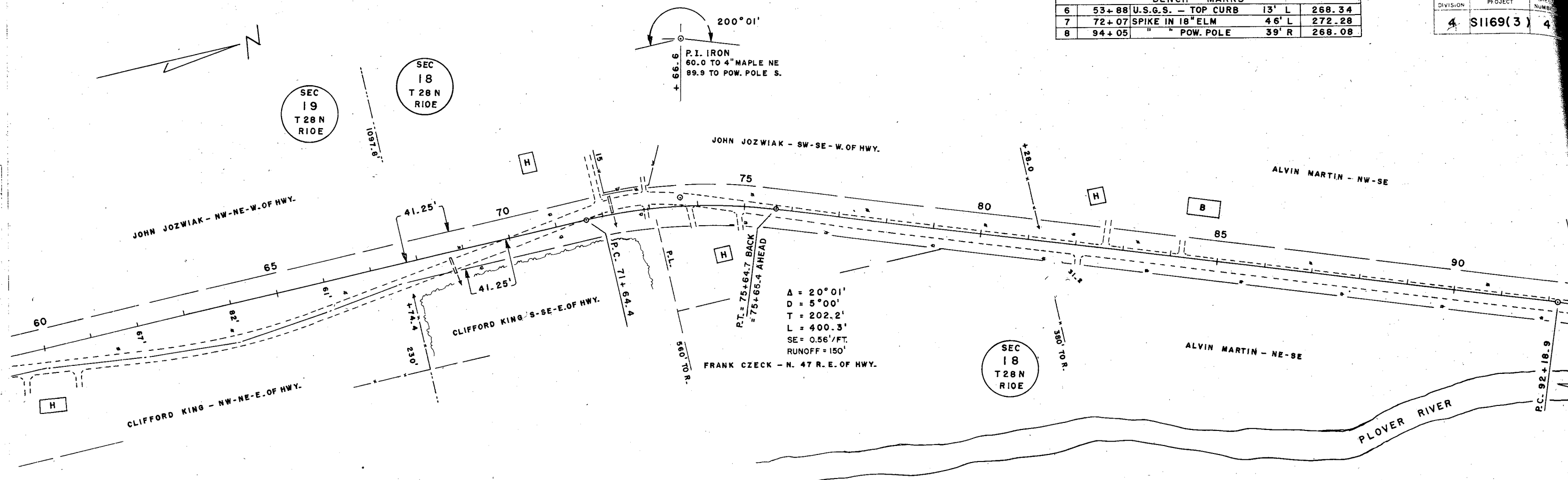
PROJECT	SHEET NUMBER	TOTAL SHEETS
4 S1169(3)	3	10



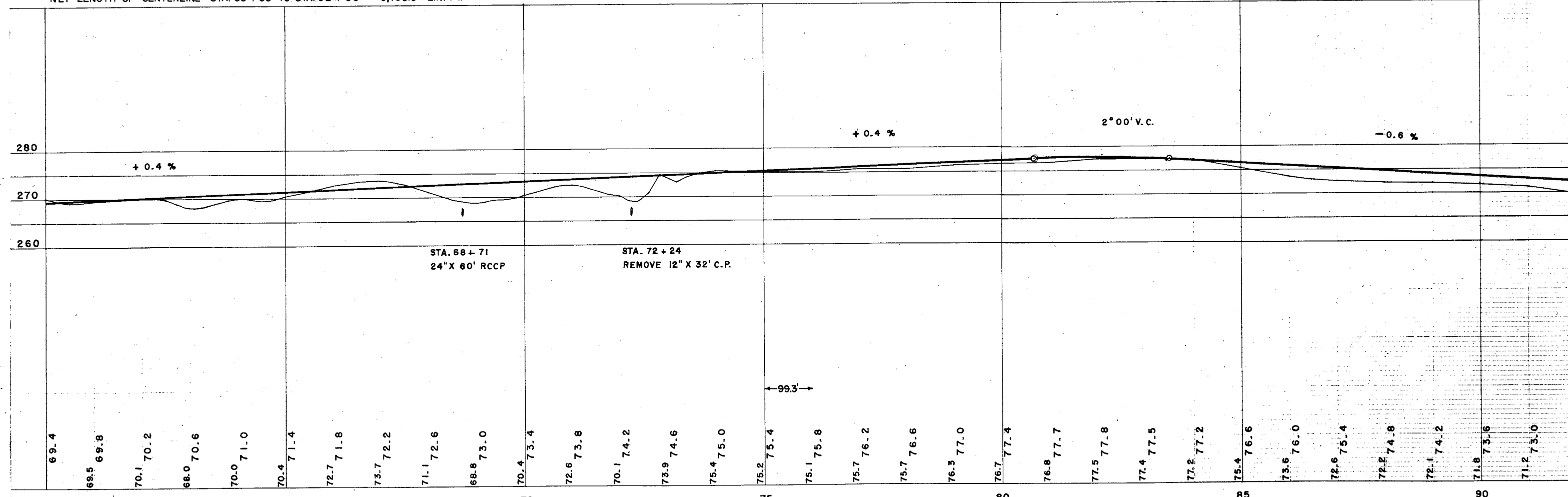
NOTE: - CULVERT PIPE INSTALLATION AND REMOVAL NOT PART OF THIS CONTRACT

BENCH MARKS				
6	53+88	U.S.G.S. - TOP CURB	13' L	268.34
7	72+07	SPIKE IN 18" ELM	46' L	272.28
8	94+05	" " POW. POLE	39' R	268.08

B. P. R. DIVISION	PROJECT	SHEET NUMBER
	4 S1169(3)	4

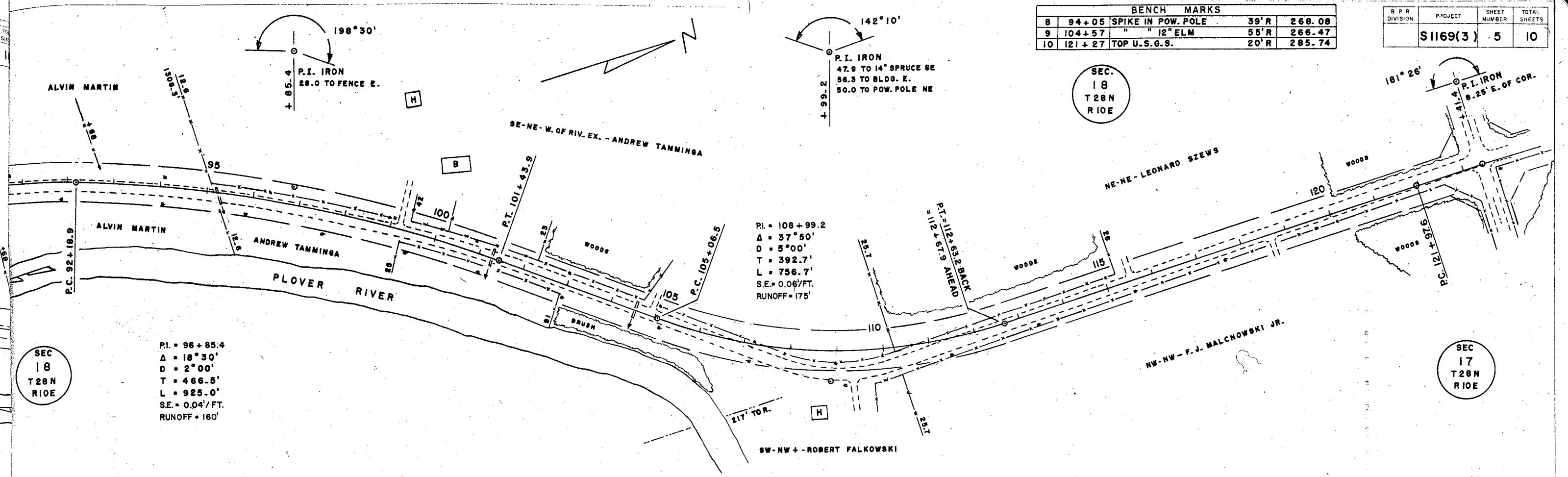


NET LENGTH OF CENTERLINE STA. 60+00 TO STA. 92+00 = 3,199.3 LIN. FT.



BENCH MARKS				
8	94+05	SPIKE IN POW. POLE	39' R	268.08
9	104+57	" " 12" ELM	55' R	266.47
10	121+27	TOP U.S.G.S.	20' R	285.74

B. P. R. DIVISION	PROJECT	SHEET NUMBER	TOTAL SHEETS
	S1169(3)	5	10



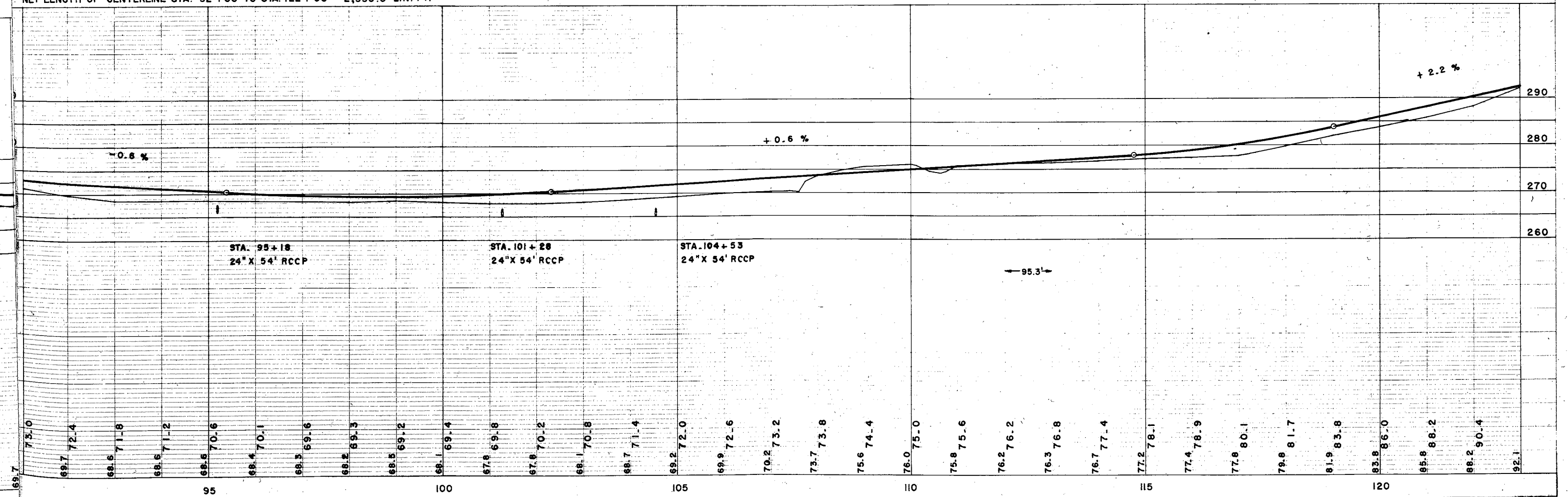
SEC
18
T28N
R10E

PI. = 96 + 85.4
 Δ = 18° 30'
 D = 2° 00'
 T = 466.5'
 L = 925.0'
 S.E. = 0.04' / FT.
 RUNOFF = 160'

PI. = 108 + 99.2
 Δ = 37° 50'
 D = 5° 00'
 T = 392.7'
 L = 756.7'
 S.E. = 0.06' / FT.
 RUNOFF = 175'

SEC
17
T28N
R10E

NET LENGTH OF CENTERLINE STA. 92+00 TO STA. 122+00 = 2,995.3 LIN. FT.



STA. 95+18
24" X 54" RCCP

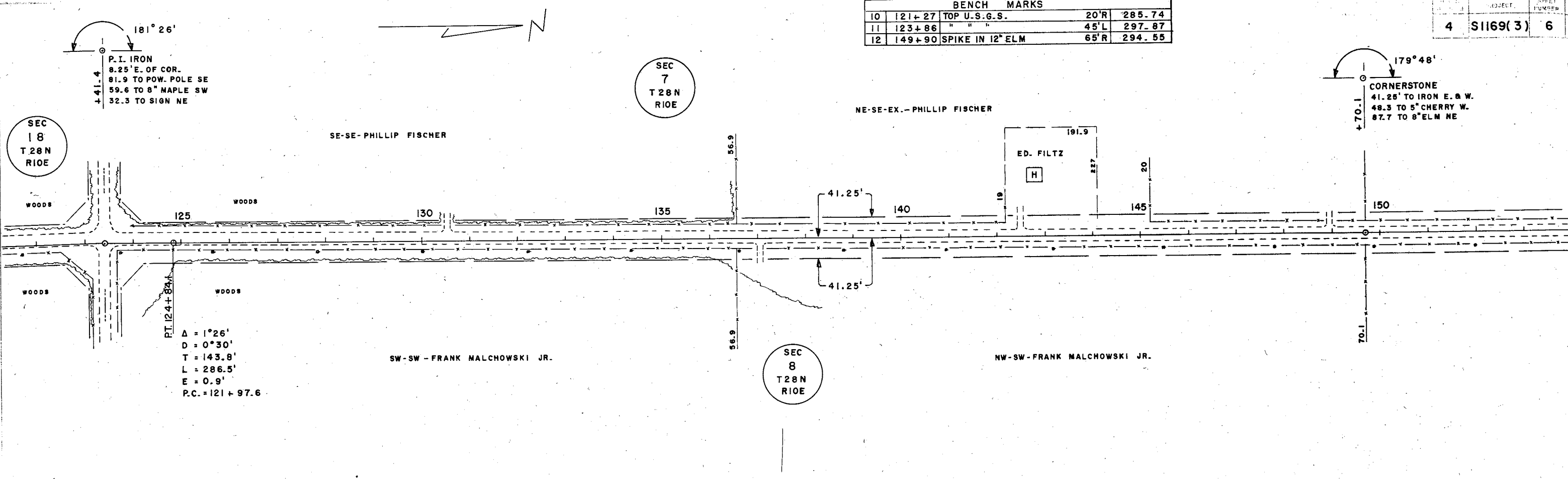
STA. 101+28
24" X 54" RCCP

STA. 104+53
24" X 54" RCCP

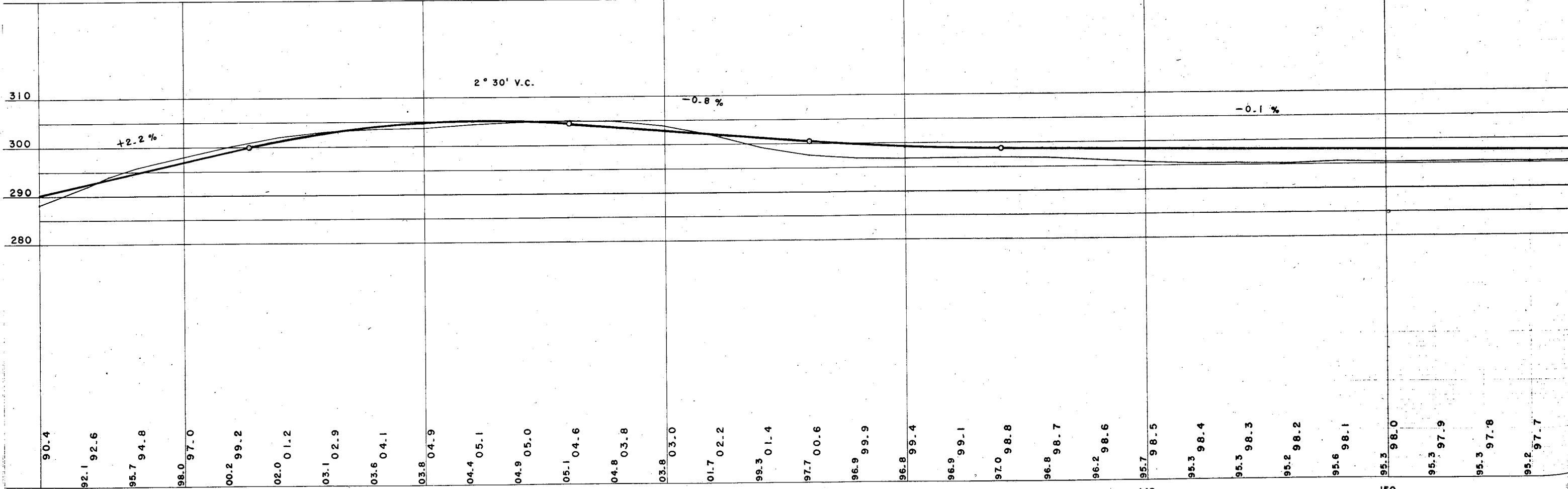
← 95.3' →

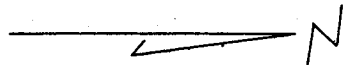
69.7 73.0
69.7 72.4
68.6 71.8
68.6 71.2
68.6 70.6
68.4 70.1
68.3 69.6
68.2 69.3
68.5 69.2
68.1 69.4
67.8 69.8
67.8 70.2
68.1 70.8
68.7 71.4
69.2 72.0
69.9 72.6
70.2 73.2
73.7 73.8
75.6 74.4
76.0 75.0
75.8 75.6
76.2 76.2
76.3 76.8
76.7 77.4
77.2 78.1
77.4 78.9
77.8 80.1
79.8 81.7
81.9 83.8
83.8 86.0
85.8 88.2
88.2 90.4
92.1

BENCH MARKS				
10	121+27	TOP U.S.G.S.	20'R	285.74
11	123+86	" " "	45'L	297.87
12	149+90	SPIKE IN 12" ELM	65'R	294.55



NET LENGTH OF CENTERLINE STA. 122+00 TO STA. 153+00 = 3,100.0 LIN. FT.





BENCH MARKS				
12	149+90	SPIKE IN 12" ELM	65'R	294.55
13	164+99	" " 12" MAPLE	60'R	298.18
14	175+74	" " POW. POLE	60'R	320.79

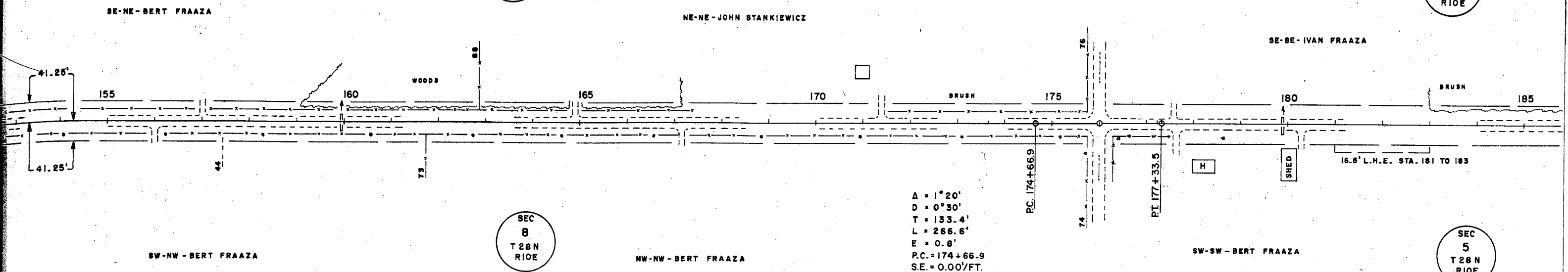
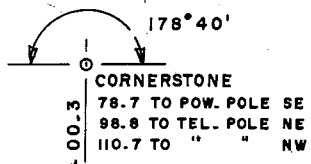
B.P.R. DIVISION	PROJECT	SHEET NUMBER	TOTAL SHEETS
4	S1169(3)	7	10

SEC
7
T 28 N
R 10 E

SEC
6
T 28 N
R 10 E

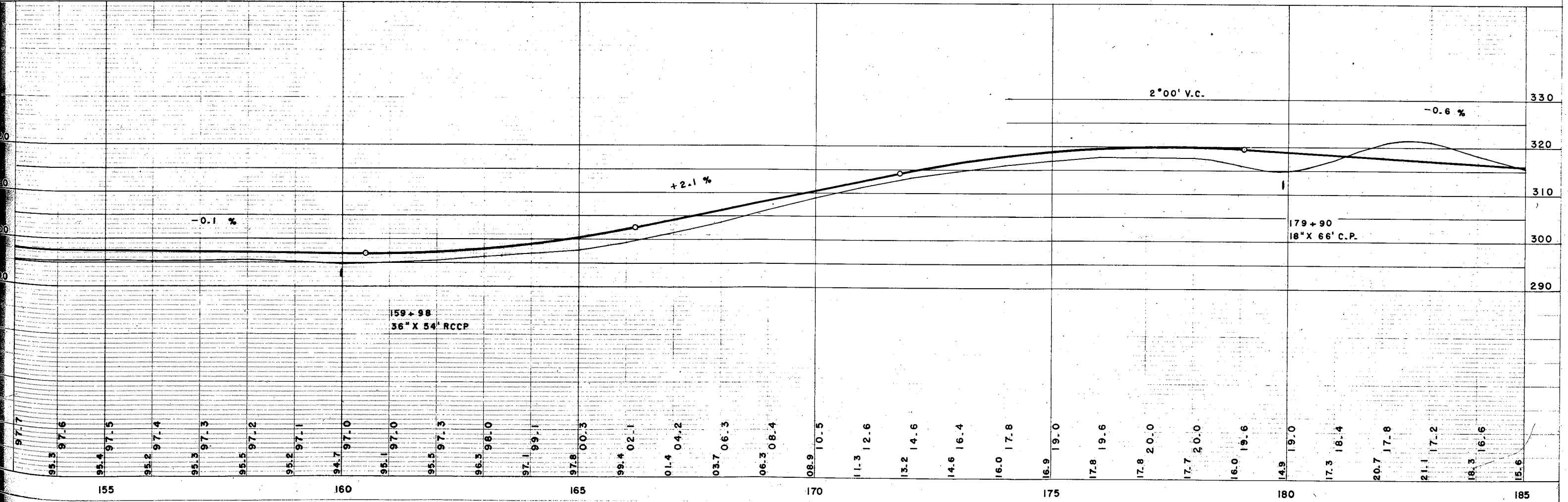
SEC
8
T 28 N
R 10 E

SEC
5
T 28 N
R 10 E



Δ = 1°20'
D = 0°30'
T = 133.4'
L = 266.6'
E = 0.8'
P.C. = 174+66.9
S.E. = 0.00'/FT.

NET LENGTH OF CENTERLINE STA. 153+00 TO STA. 185+00 = 3,200.0 LIN. FT.



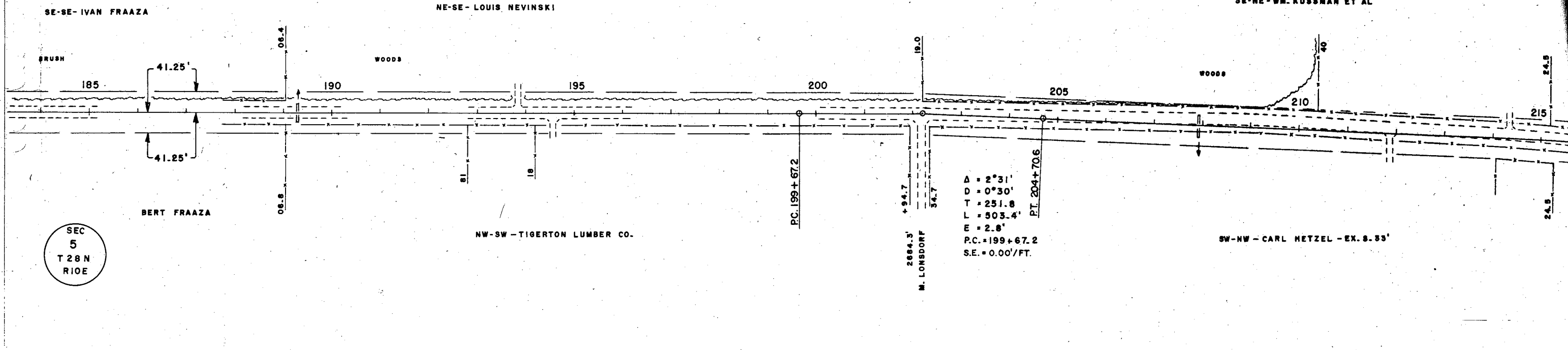
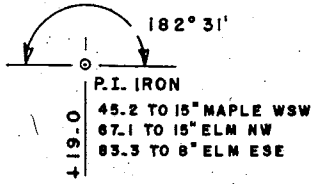
159+98
36" X 54" RCCP

179+90
18" X 66" C.P.

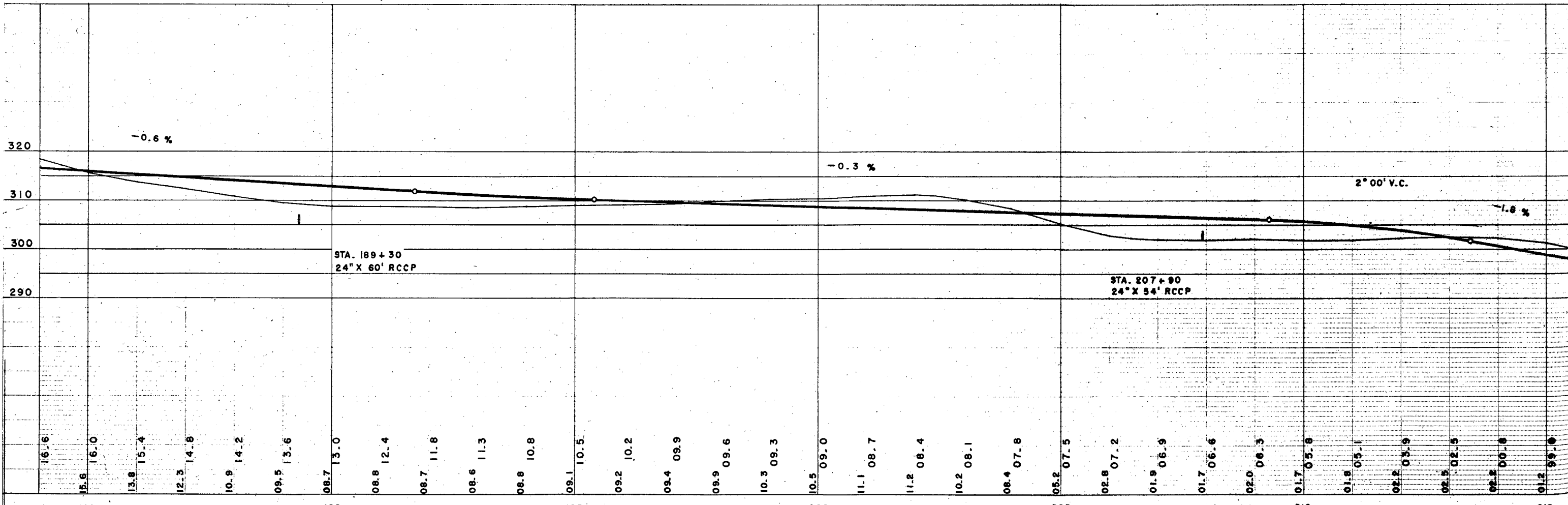
BENCH MARKS				
14	175+74	SPIKE IN POW. POLE	60'R	320.79
15	202+09	" " 6" MAPLE	50'L	314.19
16	220+57	" " 20" ELM	80'R	285.50

B. R. DIVISION	PROJECT
4	SI169(3)

SEC
6
T 28 N
R10E

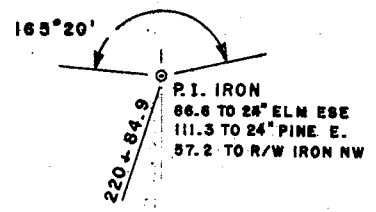
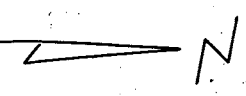


NET LENGTH OF CENTERLINE STA. 185+00 TO STA. 215+00 = 3,000.0 LIN. FT.

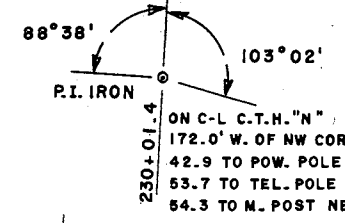


NOTE: SEE PLAN FOR ALIGNMENT CHECKED BY DATE OF WAY CHECKED.

NOTE: SEE PLAN FOR ALIGNMENT CHECKED BY DATE OF WAY CHECKED.



SEC
6
T 28 N
R 10 E



SEC
31
T 29 N
R 10 E

BENCH MARKS			
16	220+57	SPIKE IN 20" ELM	285.50
17	230+45	TOP U.S.G.S.	285.99

SHEET	TOTAL SHEETS
4	10

NE-NE - WM. KUSSMAN ET AL

A = 14°40'
D = 4°00'
T = 184.4'
L = 366.7'
S.E. = 0.04'/FT.
RUNOFF = 125'

A = 13°18'
D = 4°00'
T = 167.0'
L = 332.5'
S.E. = 0.015'/FT.
RUNOFF = 75'

END OF PROJECT S 1169(3)
STA. 229 + 70.0 = 172.0' W. & 32.1' S. OF NW COR. SEC. 5
= 31.4' S. OF STA. 737 + 00.5 PROJ. S 012 6

NW-NW - CARL HETZEL

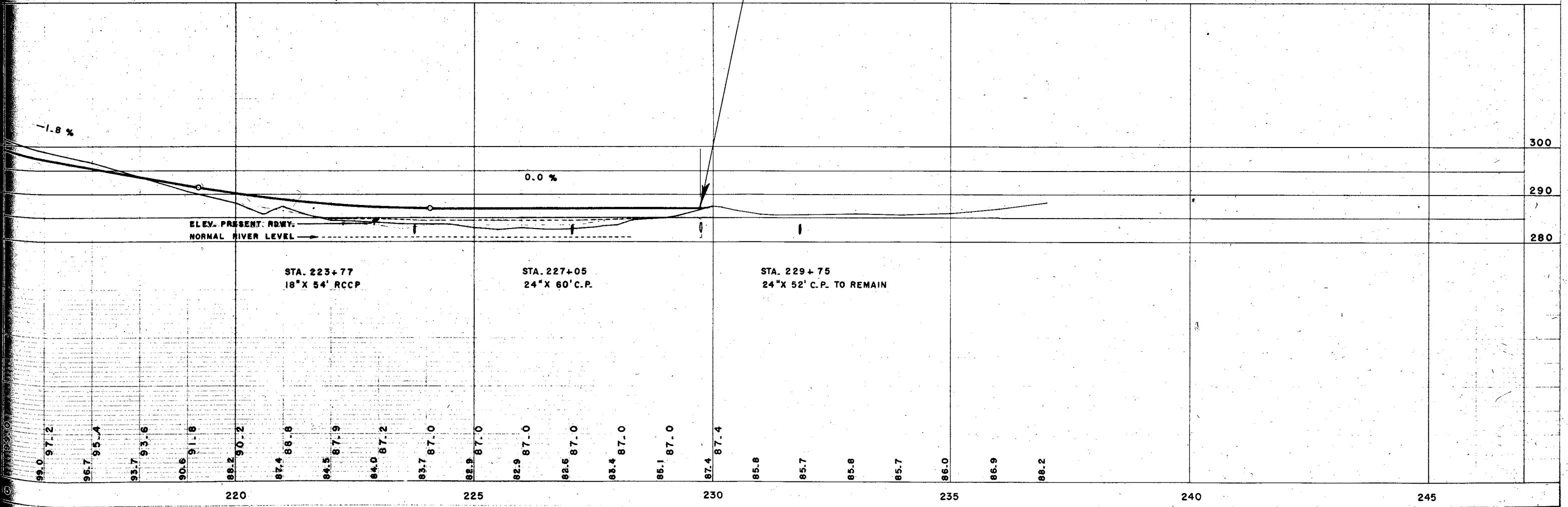
WOODS
BRUSH
PLOVER RIVER

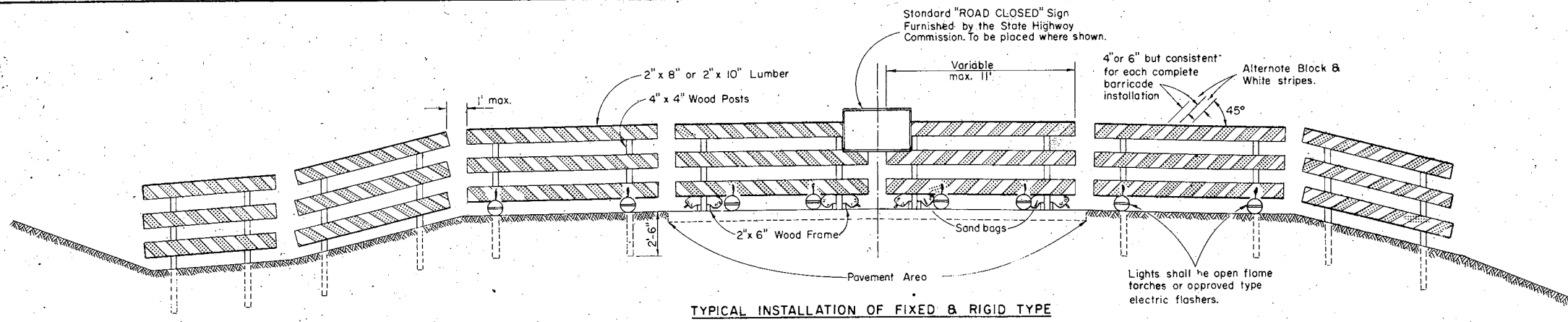
SEC
5
T 28 N
R 10 E

WOODS
BRUSH
PLOVER RIVER

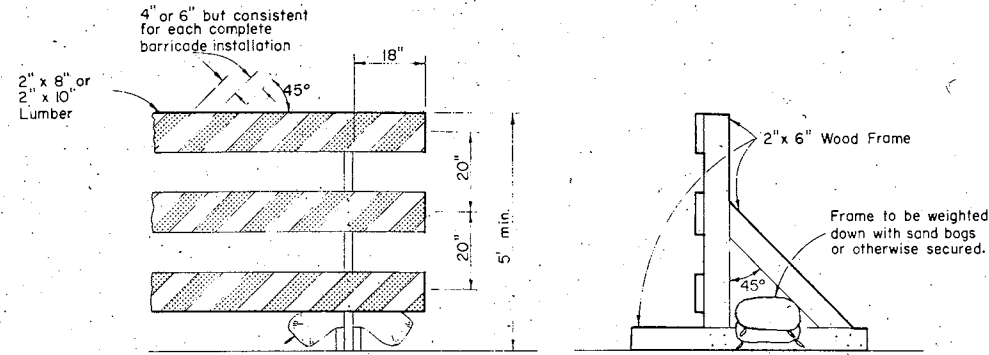
SEC
32
T 29 N
R 10 E

NET LENGTH OF CENTERLINE STA. 215 + 00 TO STA. 229 + 70.0 = 1,470.0 LIN. FT.

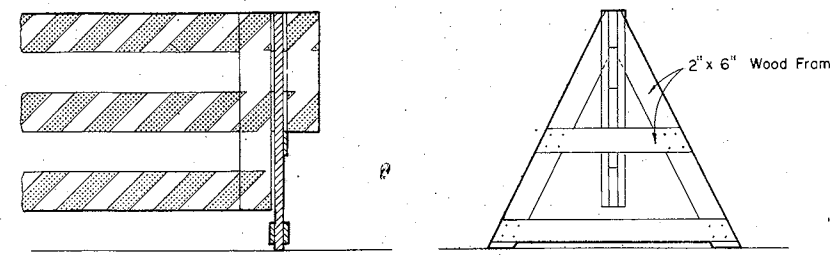




TYPICAL INSTALLATION OF FIXED & RIGID TYPE



ALTERNATE TYPE INSTALLATION (RIGID)



ALTERNATE TYPE INSTALLATION (DEMOUNTABLE)

CLASS I BARRICADE

GENERAL NOTES:

The Contractor shall construct, place and maintain barricades as shown on this drawing and as required by the Standard Specifications for the duration of the project at all points of highway closure. Barricades shall be painted as shown hereon and structurally maintained for maximum visibility at all times, for the duration of the respective project.

CLASS I BARRICADE

Shall be used at points of closure where road is closed to traffic. Gate movable sections of barricade shall be provided when necessary, for access of equipment or other authorized vehicles only.

CLASS II BARRICADE

May be used only where the hazard to traffic is relatively small, and the more or less continuous delimiting of a restricted roadway, or for temporary daytime use.

LUMBER & FABRICATION

Lumber shall be of a grade structurally sound and sufficiently rigid to satisfactorily support and maintain the purpose and intent of a barricade. The fabrication of the barricade shall be in accord with good pertinent working practices.

PAINTING

Barricades shall be painted as shown hereon in alternate black and white stripes. Black stripes shall be painted with weather resistant and durable paint. White stripes shall be painted a prime coat of good grade wood preservative followed by two coats of white 'Codi' Reflective Liquid (Minnesota Mining and Smelting Co.) or equivalent, or reflective sheeting wide angle, flat top 'Scotchite' brand material (Minnesota Mining Co.) or equivalent.

DIRECTION OF DIAGONAL STRIPES

Where a barricade extends entirely across the roadway and no vehicle access is permitted, the stripes shall slope downward toward the highway centerline.

Where vehicle access is permitted, the stripes shall slope downward in the direction toward which vehicles must turn in detouring.

Where both right and left turns are provided for, the stripes shall slope downward in both directions from the center.

MEASUREMENT & PAYMENT

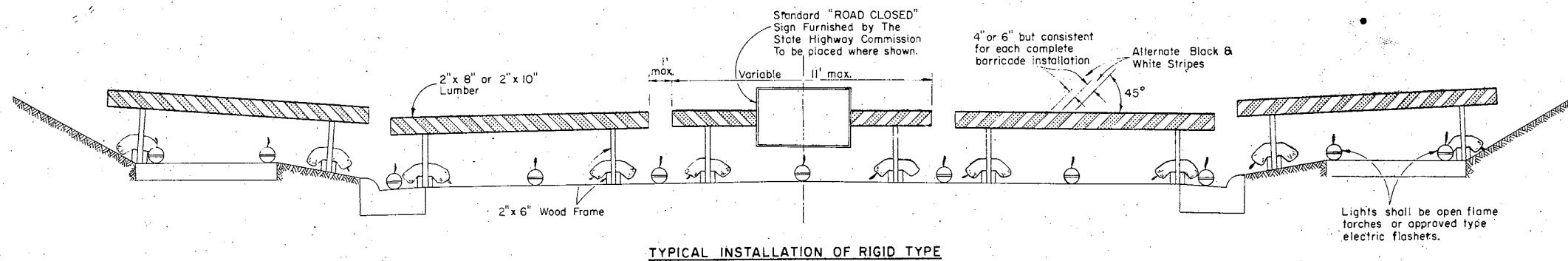
All barricades, unless otherwise provided for in the plans and/or specifications shall be furnished, placed, and maintained as noted above, and no additional compensation will be allowed but shall be construed to be included in the price bid for other items.

NOTE:

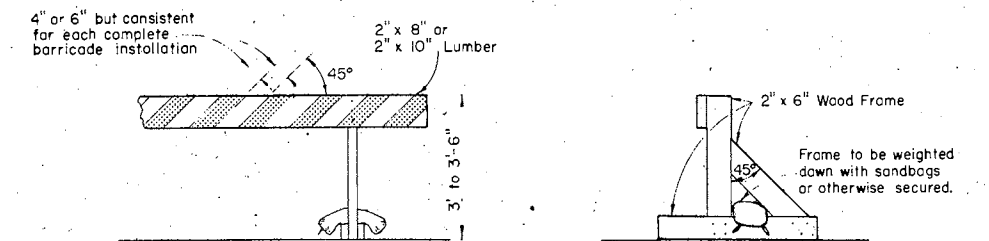
Lighting devices for barricades shall conform to the requirements of the Standard Specifications.

NOTE:

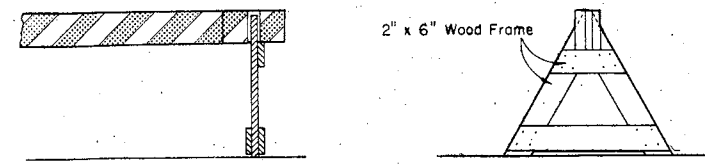
All lumber or timber dimensions shown hereon are nominal.



TYPICAL INSTALLATION OF RIGID TYPE



ALTERNATE TYPE INSTALLATION (RIGID)



ALTERNATE TYPE INSTALLATION (DEMOUNTABLE)

CLASS II BARRICADE

CONSTRUCTION BARRICADE

STATE HIGHWAY COMMISSION OF WISCONSIN

RECOMMENDED FOR APPROVAL:

DATE 2-5-63 J. S. Pelt ENGINEER

APPROVED: E. C. Postle

DATE 2/16/63 STATE HIGHWAY

PLATE NO. 72