

**MARATHON COUNTY BOARD SIZE TASK FORCE
AGENDA**

**JULY 15, 2020
3:30 P.M.**

210 RIVER DR., WAUSAU, WI

Task Force Purpose: Determine the optimal number of Marathon County Supervisory Districts, each represented by one County Board Supervisor. In making this determination, the Task Force shall consider the expected impact of the proposed board size on: the ability to attract well qualified candidates and to foster competitive elections, the efficient functioning of county governance, and the cost of County Government.

Members: John Robinson – Chair, Craig McEwen - Vice Chair, Tim Buttke, Sandi Cihlar, Jacob Langenhahn, Arnold Schlei, Rick Seefeldt, David Eckmann, Deb Hager

The meeting site identified above will be open to the public. However, due to the COVID-19 pandemic and associated public health directives, Marathon County encourages Task Force members and the public to attend this meeting remotely. To this end, instead of attendance in person, Task Force members and the public may attend this meeting by **telephone conference**. If Task Force members or members of the public cannot attend remotely, Marathon County requests that appropriate safety measures, including adequate social distancing, be utilized by all in-person attendees.

Persons wishing to attend the meeting by phone may call into the telephone conference beginning **five (5) minutes prior to the start time indicated above using the following number:**

PHONE NUMBER: 1-408-418-9388

Access Code: 146 158 1964

Password: 1111

When you enter the telephone conference, PLEASE PUT YOUR PHONE ON MUTE!

AGENDA ITEMS:

1. CALL TO ORDER;
2. WELCOME AND INTRODUCTIONS;
3. THE PUBLIC COMMENT portion of the agenda has been temporarily suspended, pursuant to Marathon County Resolution # R-29-20, dated April 21, 2020, because the technology necessary to afford the public the opportunity to address the County Board, or its subgroups, during public Comment is difficult to guarantee, if a large number of individuals have elected to call in.

POLICY DISCUSSION AND POSSIBLE ACTION:

1. APPROVE MINUTES OF THE JUNE 17, 2020 MEETING;
2. CONSIDERATIONS USED BY OTHER COUNTIES;
3. DECISION MAKING EVALUATION CRITERIA;
4. PUBLIC ENGAGEMENT ACTIVITIES;
5. NEXT STEPS;
6. NEXT MEETING DATE, TIME;
7. ADJOURN.

Any person planning to attend this meeting who needs some type of special accommodation in order to participate should call the County Clerk's Office at 715-261-1500 or e-mail infomarathon@mail.co.marathon.wi.us one business day before the meeting.

FAXED TO:

News Dept. at Daily Herald (715-848-9361), City Pages (715-848-5887),
Midwest Radio Group (715-848-3158), Marshfield News (877-943-0443),
TPP Printing (715 223-3505)

Date: July 10, 2020
Time: 3:56 pm
By: BI
Time/By: _____

SIGNED _____

Rebecca J. Frisch
Presiding Officer or Designee

NOTICE POSTED AT COURTHOUSE:

Date: _____
Time: _____ a.m. / p.m.
By: County Clerk

**MARATHON COUNTY BOARD SIZE TASK FORCE
MINUTES
June 17, 2020**

MEMBERS: *John Robinson – Chair, Craig McEwen - Vice Chair, Tim Buttke, Sandi Cihlar, Arnold Schlei, Rick Seefeldt, David Eckmann, Deb Hager*

OTHERS PRESENT: Rebecca Frisch, Dave Mack, Amanda Ley, Jamie Alberti, Mike Lichner, WSAU, Wally Litzer, Jack Hogendyk, Valerie Carrillo, Meg Ellefson

AGENDA ITEMS:

1. Call to Order

In the presence of a quorum, with the agenda being properly signed and posted, the meeting was called to order by Chairman Robinson at 3:33 p.m. via WebEx.

2. Welcome and Introductions

All were welcomed and introductions were made.

3. Public Comment

The Public Comment portion of the agenda has been temporarily suspended, pursuant to Marathon County Resolution # R-29-20, dated April 21, 2020, because the technology necessary to afford the public the opportunity to address the County Board, or its subgroups, during public Comment is difficult to guarantee, if a large number of individuals have elected to call in.

POLICY DISCUSSION AND POSSIBLE ACTION:

4. Overview of Task Force on County Board Size Charter

Discussion: Chairman Robinson review the County Board Ordinance creating the Task Force along with the Charter explaining the mission and duties of the Task Force.

Action: NO ACTION TAKEN, FOR INFORMATIONAL PURPOSES ONLY

5. Overview of the U.S. Census and Redistricting Process

Discussion: Chairman Robinson briefly reviewed the County Decennial Redistricting Handbook provided by the Wisconsin Counties Association. This information was for reference and will provide guidance to the county later when engaging in the redistricting process.

Action: NO ACTION TAKEN, FOR INFORMATIONAL PURPOSES ONLY

6. Wisconsin Counties Association Governance Structure Information/Data

Discussion: Chairman Robinson briefly reviewed the information in the packet referencing the population, number of supervisors, committee structures, and election data from the State's Counties.

Action: NO ACTION TAKEN, FOR INFORMATIONAL PURPOSES ONLY.

7. What is Needed to Make an Informed Decision

Discussion: Chairman Robinson directed a discussion on what questions or information the Task Force wanted to have in order to make decisions and continue the overall discussion regarding board size.

The member's provided many questions and asked for information that revolved around five main categories: What other Counties have done, representation and diversity, efficiencies and financial components, county board self-assessment, and public engagement. These categories will be used to develop future discussions.

MARATHON COUNTY BOARD SIZE TASK FORCE

June 17, 2020

Action: STAFF WILL WORK WITH THE CHAIRMAN AND VICE-CHAIRMAN TO PROVIDE ADDITIONAL INFORMATION FOR THE NEXT MEETING.

8. Future Meetings and Schedule – July 15, 2020

Action: THE NEXT MEETING WILL BE SCHEDULED FOR JULY 15, 2020 AT 3:30 PM AT 210 RIVER DRIVE, WAUSAU, WI AND VIA WEBEX.

9. Adjourn

Action: There being no further business to come before the members, **ROBINSON ADJOURNED THE MEETING OF THE MARATHON COUNTY BOARD SIZE TASK FORCE AT 4:30 PM.**

Submitted by:

Dave Mack

Marathon County Conservation, Planning and Zoning

DM: BI

July 10, 2020

Marathon County Board Size Task Force
What is needed to make an informed decision?
June 17, 2020 meeting discussion

Other WI counties efforts

What characteristics did other counties review in their decision making process when deciding to change the size of the board?

What can we learn from Wood and other counties that have changed the size of their boards? How are they organized? What is their committee structure? Number of committees? How many committees are members on? Size of committees?

What is the size of districts in other counties? (geographic and population)

How many people does each supervisor represent?

Why did Fond du Lac County decrease/increase the size of the board?

Efficiencies/Financial components of various board sizes

How are costs affected by the size of the board? Increase/decrease

What is the compensation of members? Did it change with smaller boards?

Are there any studies on organizational efficiency relating to optimum board size? UW Madison Local Government Education Center as a resource

Representation and diversity

Was participation impacted with a change in board size?

Is diversity impacted by board size? How?

Are there more contested seats on smaller boards?

Self-Assessment

What are the strengths/weaknesses of the county board is it currently operates?

How does the current county board structure work?

What works well? What doesn't?

How should we collect information from current board members? Retired members?
Survey/interviews/other

How much time do members spend on county board business? In committee, board meetings, prep, constituent relations, other meetings, other

Public Engagement

How will we engage others? WI Town's annual meeting? Business? Chamber? Community stakeholders? General public?

Other questions from task force members:

What is the rationale for the reduction in the size of the board?

What is the schedule for the task force?

A Snapshot of Committee Structures Wisconsin Counties' - November 2019

As noted above, the following list notes the county committees for each county in Wisconsin. This information was collected through a search of each county's website, with mainly elected, statutory and appointed committees in mind. To differentiate: elected committees are those with members that are elected, typically at organizational meetings, by terms mandated in county codes. Statutory committees are those mandated by state laws (statutes). Finally, appointed committees are those in which members are appointed either by the board or some other governing body.

The list below shows the mandated, number and when relevant, type of committee structure adopted by each Wisconsin county. This list reflects the change and broadening in government from the previous research conducted on this topic, as well as providing a timely snapshot into committee structures of Wisconsin counties.

This data was gathered from individual county websites. Thus, it is only as complete as county websites are updated and accurate. In general, individual judgements were made to exclude one-person/ single member committees, ad hoc committees, special task forces, extra-county commissions or boards on topics such as rivers, lakes, etc., and cross-county commissions.

County	Number of Committees
Adams	11
Ashland	4 elected, 12 appointed
Barron	1 elected, 28 appointed
Bayfield	21 standing + various others
Brown	9
Buffalo	16
Burnett	6 + committee of the whole
Calumet	26
Chippewa	7 standing, 15 statutory, 7 special
Clark	21 standing, 4 elected
Columbia	12 standing + others
Crawford	14 standing
Dane	13 standing + subcommittees
Dodge	36
Door	29
Douglas	8 standing + committee of the whole
Dunn	9 standing +
Eau Claire	9 standing +
Florence	18
Fond du Lac	5 standing
County	Number of Committees
Forest	33
Grant	17

Green	27
Green Lake	25
Iowa	23
Iron	24
Jackson	22 elected/ appointed
Jefferson	33
Juneau	1 elected 17 appointed
Kenosha	7 county board committees + others
Kewaunee	16
La Crosse	6 standing + committee of the whole
Lafayette	24
Langlade	1
Lincoln	13
Manitowoc	8 +
Marathon	10 +
Marinette	23
Marquette	10
County	Number of Committees
Menominee	11 + committee of the whole
Milwaukee	8 + committee of the whole
Monroe	17
Oconto	15

Oneida	21
Outagamie	7
Ozaukee	6
Pepin	6
Pierce	6 elected, 24 appointed
Polk	5 elected, 8 appointed
Portage	3 (incomplete)
Price	11
Racine	6
Richland	33
Rock	31
Rusk	18
Sauk	20
Sawyer	9
Shawano	24
Sheboygan	9 + committee of the whole
County	Number of Committees
St. Croix	19 + committee of the whole
Taylor	2 appointed, 32 elected

Trempealeau	14
Vernon	4 elected, 17 appointed
Vilas	14
Walworth	21+ committee of the whole
Washburn	25
Washington	8
Waukesha	7
Waupaca	28
Waushara	8
Winnebago	33
Wood	5

Individual County Committee Lists – taken from the County’s Website in November 2019

County	Committees
Adams	<ul style="list-style-type: none"> • Administrative & Finance Committee • Ethics Board • Health and Human Services • Highway • Land & Water and UW-Extension • Library Board • Planning and Zoning • Property and Recreation • Public Safety and Judiciary • Solid Waste • Workplace Safety Link to list of standing committees with description of their duties.
Ashland	<p>Elected</p> <ul style="list-style-type: none"> • Agriculture and UW-Extension • Executive • Forestry and Recreation • Highway <p>Appointed</p> <ul style="list-style-type: none"> • Airport • Board of Adjustment • Criminal Justice • Finance and Economic Development • Health and Human Services • Land Conservation • Land Information Council • Large Assembly • Local Emergency Planning Committee • Public Property and Law Enforcement • Tri-County • Zoning and Land Link to list of all elective and appointed committees and their membership

Individual County Committee Lists – taken from the County’s Website November 2019

Barron	<p>Elected</p> <ul style="list-style-type: none"> • Highway Committee <p>Appointed</p> <ul style="list-style-type: none"> • Commission on Aging • Community Development • Economic Development Board • Executive • Extension/ Land Conservation • Health and Human Services Board • Highway Safety Commission • Housing Commission • Indianhead Federated Library • Lake District- Land Conservation Council • Land Information Council • Law Enforcement/ Emergency Management • Local Emergency Planning Committee • Momentum West • Northern Regional Trail Advisory Committee • Property • Restorative Justice Board • Solid Waste • Veterans Service Commission • Veterans Service Committee • WI West Central Regional Planning • Zoning • Zoning Board of Adjustment <p>Link to list of all elective and appointed committees and their membership.</p>
Bayfield	<ul style="list-style-type: none"> • Aging and Disability Advisory Committee • Aquatic Invasive Species Committee • Board of Adjustment/ Appeals • Children’s Community Options Program • Comprehensive Community Service Committee • Executive Committee • Fair Committee • Family Services Advisory Committee • Forestry and Parks Committee • Health Board • Highway Committee • Human Services Board • Industrial Development Agency • Large Scale Livestock Study Committee • Library Committee • Local Emergency Standing Planning Committee • Nutrition Advisory Council • Personnel Committee • Planning and Zoning Committee • Tourism Committee • Tribal County Relations Committee <p>Link to list of all elective and appointed committees and their membership.</p>
Brown	<ul style="list-style-type: none"> • Administration Committee • Education and Recreation Committee • Executive Committee • Human Services Board • Human Services Committee • Land Conservation Subcommittee • Mental Health Treatment Subcommittee • Planning, Development and Transportation Committee • Public Safety Committee <p>Link to list of current and past committees.</p>

Individual County Committee Lists – taken from the County’s Website November 2019

Buffalo	<ul style="list-style-type: none"> • Agricultural and Extension Education Committee • Board of Adjustments • County Board • Economic Development Committee • Finance Committee • Health & Human Services and Veterans Committee • Highway Committee • Highway Safety Commission • Human Resources Committee • Land Conservation Committee • Land Information Committee • Land Information Council • Law Enforcement Committee • Local Emergency Planning Committee • Zoning Committee • Recycling Committee <p>Link to list of standing committees including agenda, minutes, and membership.</p>
Burnett	<ul style="list-style-type: none"> • Administration Committee • Infrastructure Committee • Health and Community Services Committee • Land Use and Information Committee • Public Safety Committee • Natural Resources Committee <p>Link to list of standing committees including current and past minutes and meeting notices</p>
Calumet	<ul style="list-style-type: none"> • Administrative Services Committee • Aging & Disability Resource Center Serving Calumet, Outagamie and Waupaca Counties Advisory • Aging & Disability Resource Center/Long Term Support • Agricultural and Extension Education Committee • Brillion Library Board • Calumet County Traffic Safety Commission • Chilton Library Board • Committee on the Rules of Order of the Calumet County Board of Supervisors • County Children with Disabilities Education Board • County Parks Commission • East Central Wisconsin Regional Planning Commission • Fox Valley Workforce Development Board • Glacierland Resource and Conservation Development Council • Health and Human Services Board • Highway Committee • Land and Water Conservation Committee • Land Information Council • Local Emergency Planning Committee • Manitowoc-Calumet Counties Library Systems Board • New Holstein Library Board • Planning, Zoning, and Farmland Preservation Committee • Protection of Persons and Property Committee • Revolving Loan Fund Committee • Veterans Service Commission • Winnebago Waterways Committee • Zoning Board of Adjustment <p>Link to list of committees with list of members.</p>

Individual County Committee Lists – taken from the County’s Website November 2019

Chippewa	<p>Standing</p> <ul style="list-style-type: none"> • Agriculture and Extension • Economic Development • Executive • Facilities and Parks • Highway • Legal and Law Enforcement • Planning and Zoning <p>Statutory Commissions and Boards</p> <ul style="list-style-type: none"> • ADRC Board • Board of Adjustment • Committee for Chapter 980 Placements • County Traffic Safety Commission • Criminal Justice Collaborating Council • Health and Human Services Board • Housing Authority Commission • Inspiring and Facilitating Library Success Board • Land Conservation and Forest Management Committee • Land Information Council • Library Planning Committee • Local Emergency Planning Committee • Nutrition Advisory Council • Veterans Service Commission • West Central WI Regional Planning Commission <p>Special Committees</p> <ul style="list-style-type: none"> • Chippewa County Bicycle and Pedestrian Plan Advisory Committee • Chippewa County Economic Development Corporation • Chippewa Valley Regional Airport Commission • Community Foundation of Chippewa County Advisory Committee • Northern Regional Trail Advisory Committee • Public Firearms Range Advisory Committee • Tax Deeded Land Retention and Sale Committee <p>Link to list of special and statutory committees</p>
Clark	<p>Standing Committees</p> <ul style="list-style-type: none"> • Administrative Review Appeals Board • Affirmative Action Committee • ADRC Governing Board • Board of Health • Community Development Board • Clark County Rehab and Living Center Sub-Committee • Economic Development Committee • Executive Legislative and Judicial Committee • Fair Liaison Committee • Forestry and Parks Committee • Land Conservation Committee • Local Emergency Planning Commission • Law Enforcement and Emergency Management Committee • Mining Committee • Personnel Committee • Planning, Zoning and Land Information Committee • Regional Planning Commission • River Country RC&D Council • Tech Steering Committee • Veteran’s Affairs Committee • Veteran’s Service Committee <p>Elected Committees</p> <ul style="list-style-type: none"> • Agricultural and Extension Education Committee • Finance • Highway Committee • Social Services Committee <p>Link to list of standing and elected committees including membership.</p>

Individual County Committee Lists – taken from the County’s Website November 2019

Columbia)	<ul style="list-style-type: none"> • Agriculture, Extension, Land and Water Conservation • Columbia Health Care Center • Executive • Finance • Health and Human Services • Highway • Human Resources • Information Services and Property • Judiciary • Planning and Zoning • Public Safety • Solid Waste <p>Link to list of standing committees including location and contact information.</p>
Crawford	<ul style="list-style-type: none"> • Agriculture/Fair • Bonds& Insurance • Audit • Delinquent Tax • Finance • Land Conservation • Highway • ADRC • Veterans Service • Personnel • Public Health • Public Property • Public Safety • Rules & Procedure <p>Link to county directory listening standing committees</p>
Dane	<ul style="list-style-type: none"> • Airport Commission • City-County Liaison Committee • Environment, Agriculture and Natural Resources Committee • Executive Committee • Health and Human Needs Committee • Lakes and Watershed Commission • Land Conservation Committee • Listening Session • Park Commission • Personnel and Finance Committee • Public Protection and Judiciary Committee • Public Works and Transportation Committee • UW Extension Committee <p>Link to list of committees and subcommittees.</p>

Individual County Committee Lists – taken from the County’s Website November 2019

Dodge	<ul style="list-style-type: none"> • Audit Committee • Board of Adjustment • Broadband Workgroup • Building Committee • Child Death Review Team • Civil Service Committee • Commission on Aging and Disability Services • Courtroom Security and Facilities Committee • Crime Prevention Funding Board • Criminal Justice Collaborating Council • Executive Committee • External Audit Review Oversight • Finance Committee • Friends of Clearview Committee • Health Facilities Committee • Highway Committee • Housing Authority Committee • Human Resources and Labor Negotiations Committee • Human Services and Health Board • Information Technology Committee • Intercounty Coordinating Committee • Judicial Public Protection Committee • Land and Water Conservation • Land Information Council • Land Resources and Parks • Library Planning Committee • Local Emergency Planning Committee • Nutrition Advisory Council • Public Records Committee • Railroad Consortium Committee • Taxation Committee • Traffic Safety Commission • Transportation Advisory Committee • UW-Extension Education Committee • Waste Management Local Siting Committee • Waste Management Local Standing Committee <p>Link to list of committees.</p>
Door	<ul style="list-style-type: none"> • Administrative • Aging and Disability Resource Center Advisory Board • Agriculture and Extension Education • Board of Health • CCS/CST Coordinating Committee • Children’s COP Advisory Committee • Civil Service Commission • Communications Advisory Technical Subcommittee • Door County Housing Authority • Facilities and Parks Committee • Finance Committee • Highway and Airport Committee • Highway Safety Commission • Human Services Board • Land Conservation • Land Information Council • Legislative Committee • Library Board • Local Emergency Planning Committee • Museum-Archives Committee • Negotiating Committee • Nutrition Advisory Council • Public Safety Committee • Resource Planning • Risk Management/ Insurance Committee • Technology Services Committee • Veterans Service Commission • WI Development Fund Grant- Loan Review Committee • Zoning Board of Adjustment <p>Link to list of standing committees including staff, services and duties.</p>

Individual County Committee Lists – taken from the County’s Website November 2019

Douglas	<ul style="list-style-type: none"> • Executive Committee • Administrating Committee • Extension, Education and Recycling Committee • Forest, Parks and Recreation Committee • Land and Development Committee • Public Safety Committee • Transportation and Infrastructure Committee • Zoning Committee <p>Link to list of standing and special committees.</p>
Dunn	<ul style="list-style-type: none"> • Committee on Administration • Community Resources and Tourism Committee • Executive Committee • Facilities Committee • Health and Human Services Board • Highway Committee • Judiciary and Law Committee • Planning, Resources, and Development Committee • The Neighbors of Dunn County Committee <p>Link to list of standing committees and special committees.</p>
Eau Claire	<ul style="list-style-type: none"> • Committee on Administration • Committee on Finance and Budget • Highway Committee • Committee on Human Resources • Human Services Board • Committee on Judiciary and Law Enforcement • Committee on Parks and Forest • Committee on Planning and Development • UW-Extension Education <p>Link to list of standing committees, boards and commissions including members and contact information.</p>
Florence	<ul style="list-style-type: none"> • ADRC/ Commission on Aging • Audit, Budget and Administrative Committee • Board of Health • Buildings and Grounds Committee • Economic Development Commission • Economic Development Committee • Forestry and Parks Committee • Highway Committee • Human Services Committee • IT Committee • Land Conservation Committee • Legislative Advisory Committee • Library Board • Personnel- Law Enforcement • Safety Committee • Task Force Committee • UW-Extension • Zoning/ Land Use <p>Link to list of standing committees and their members.</p>
Fond du Lac	<ul style="list-style-type: none"> • Finance, Personnel and Economic Development • Highway, Airport and Facilities • Human Services • Public Safety • UW-Extension Education, Agriculture and Recreation <p>Link to links for standing committees and committees, boards & commissions appointed members</p>

Individual County Committee Lists – taken from the County’s Website November 2019

Forest	<ul style="list-style-type: none"> • ACT 184 Reintegration Committee • Advertising • Aging • Audit and Claims • Child Support • Community Coalition • Emergency Government and 911 • Fair • Finance • Forest County Economic Development Corporation • Forestry and Recreation Committee • Health Committee • Highway Committee • INTEGRATION • Intergovernmental Relations (Comprehensive Planning) • IT Cyber • Land and Water Resources (Zoning) • Land Conservation/ Agriculture and Extension • Land Conservation- Land Information/ GIS Committee • Land Information • Land Sales and Delinquent Tax • Library • Local Emergency Planning Commission (SARA) • North Central Wisconsin Regional Planning Commission • Personnel • Public Property/ Building • Risk Management • Rules and Regulations Committee • Sheriff and Justice • Social Services • Traffic Safety Commission • Veterans Service • WCA Committee <p>Link to list of committees.</p>
Grant	<ul style="list-style-type: none"> • Administrative • Ag/ Extension- Education Committee/ Fair Board • Aging and Disability Resource Center of Southwest Wisconsin • Board of Health • Conservation Sanitation and Zoning Department • Economic, Tourism, and Resource • Emergency Government • Executive • Highway/ DMATS • Land Information Council • Law Enforcement • Orchard Manor/ County Farm • Social Services Board • Traffic Safety Commission • Unified Community Services Board of Directors • Veterans • Wisconsin River Rail Transit Commission <p>Link to list of standing committees including members and description.</p>

Individual County Committee Lists – taken from the County’s Website November 2019

Green	<ul style="list-style-type: none"> • Aging and Disability Advisory Committee • Agriculture and Extension Education • Auditing, Bonding, and Claims • Board of Adjustment • Committee of Committees • Criminal Justice Coordinating council • Finance and Accounting • Green County Development Corporation • Health • Highway • Human Services Board • Land and Water Conservation • Land Information Council • Land Use and Zoning • Law Enforcement and Public Safety • Library Board • Local Emergency Planning • Personnel and Labor Relations • Pleasant View Nursing Home • Property, Parks and Insurance • Rail Transit Commission • Reapportioning • Resolutions, Legislative and Judicial • Solid Waste Management Board • Tourism • Tri-County Trails • Veterans Services <p>Link to list of standing committees and lists of members.</p>
Green Lake	<ul style="list-style-type: none"> • Administrative Committee • ADRC Governing Board Committee • Ag/ Ext Education and Fair Committee • Board of Adjustment • Chairman Committee • Drainage Board • Economic Development Corporation • Finance Committee • Health & Human Services Aging Advisory Committee • Health & Human Services Board • Health & Human Services Family Resource Council • Health & Human Services Health Advisory Committee • Health & Human Services Transportation Coordinating Committee • Highway Committee • Highway Traffic Safety Commission • Intercounty Coordinating Committee • Judicial/ Law Enforcement & Emergency Management Committee • Land Conservation Committee • Land Information Council • Land Use Planning & Zoning Committee • Parks Commission • Personnel Committee • Property & Insurance Committee • Securities and Facilities Committee • Veteran’s Service Commission <p>Link to list of committees including their members and other information.</p>

Individual County Committee Lists – taken from the County’s Website November 2019

Iowa	<ul style="list-style-type: none"> • Aging & Disability Resource Center • Agriculture & Disability Resource Center • Airport Committee • CDBG Citizen Participation Committee • Executive Committee • General Government • Health Committee • Health & Human Services Committee • Jail Building Committee • Land Conservation Committee • Land Information Council • Local Emergency Planning Committee • Long Range Planning Commission • Pecatonica Rail Transit Commission • Planning & Zoning Committee • Public Safety Committee • Public Works Committee • Revolving Loan Fund Committee • Senior Living Committee 2020 • Seniors United For Nutrition Board • Tax Claims • Unified Community Services • Wisconsin River Rail Transit Commission <p>Link to list of committees including their members and other information.</p>
Iron	<ul style="list-style-type: none"> • Agriculture-Extension-Education • Airport • Board of Adjustment • Board of Health • Commission on Aging • Comprehensive Planning/ Land & Zoning • Economic Development & Legislative • Fair Board • Finance • Forestry-Harbors-Parks Committee • Harbor Commission • Highway • Housing • Human Services Board • Iron County Citizens Mining Advisory Committee • IT Committee • Land Conservation • Land Information Council • Law Enforcement • Mining Impact • Railroad Commission • Recycling/ Solid Waste • Traffic Safety • Veterans Service Commission <p>Link to list of committees and members</p>

Individual County Committee Lists – taken from the County’s Website November 2019

<p>Jackson</p>	<ul style="list-style-type: none"> • ADRC/ Nutrition • Airport • Board of Adjustment • Bonds • Executive, Finance and Insurance • Ethics • Extension and Education • Forestry& Parks • Health & Human Services • Highway • Housing Authority • Land Conservation and Agriculture • Land Information Council • Law Enforcement/ Emergency Management • LEPC • Personnel/ Bargaining/ risk Management • Property • Regional Planning • Tax Deed and Land • Veterans Service • Western Dairyland • Zoning & Land Information Committee
<p>Jefferson</p>	<ul style="list-style-type: none"> • Board of Health • Bridges Federated Library System Board • Broadband Working Group • Building and Grounds Committee • Community Justice Collaborating Council • Comprehensive Plan Steering Committee • Economic Develop Consortium • Economic Revolving Loan Committee • Executive Committee • Fair Park Committee • Farm Drainage Board • Finance Committee • Highway Committee • Historic Sites Preservation Council • Home Consortium Board • Human Resources Committee • Human Services Board • Jefferson County Library Board • Land and Water Conservation Committee • Land Information Council • Law Enforcement/ Emergency Management Committee • Local Emergency Planning Committee • Nutrition Project Council • Parks Committee • Planning & Zoning Committee • Sheriff’s Civil Service Commission • Solid Waste Committee • Traffic Safety Commission • University Extension Education Committee • Veterans Service Commission • Wisconsin River Rail Transit Commission • Zoning Board of Adjustment <p>Link to list of standing committees.</p>

Individual County Committee Lists – taken from the County’s Website November 2019

<p>Juneau</p>	<p>Elected Committee</p> <ul style="list-style-type: none"> • Highway & Public Works Committee <p>Appointed Committees</p> <ul style="list-style-type: none"> • Aging & Nutrition • Agriculture & Extension • Audit & Claims • Building • Emergency Management • Executive Committee • Finance & Computer • Industrial & Recreation • Land, Forestry, Parks & Zoning Committee • Land Information Counsel • Land & Water Resources Conservation • Local Emergency Planning • Personnel & Insurance (Safety/ Loss Control) • Public Peace and Good Order • Sheriff & Jail • Negotiating • Veterans <p>Link to list of committees and various others not mentioned</p>
<p>Kenosha</p>	<p>County Board Committees</p> <ul style="list-style-type: none"> • Executive Committee • Finance/ Administration Committee • Human Services Committee • Judiciary & Law Committee • Legislative Committee • Planning, Development & Extension Education Committee • Public Works/ Facilities Committee <p>Link to list of County Board Committees and other boards, commissions and committees.</p>
<p>Kewaunee</p>	<ul style="list-style-type: none"> • ADRC • Commission on Aging • Executive Committee • Finance & Public Property • Highway/ Solid Waste • Human Services • Land & Water • Local Emergency Planning Committee • Parks, Promotion & Maintenance • Public Health & Veterans • Public Safety & Justice Committee • Revolving Loan Fund • Transportation Committee • UW-Extension • Violence Intervention Project Committee • WI Utility Tax <p>Link to list of committees.</p>

Individual County Committee Lists – taken from the County’s Website November 2019

Lafayette	<ul style="list-style-type: none"> • Audit Committee • Board of Health • Building and Insurance Committee • Commission on Aging Advisory • County Trails Committee • Economic Development Committee • Executive, Rules and Legislation Committee • Extension Education Committee • Fair Committee • Finance Committee • GIS/ IT Committee • Grievance Committee • Highway Committee • Hospital Committee • Housing Authority Committee • Human Resources Committee • Human Services Board • Land Conservation Committee • Land Information Council • Law Enforcement and Emergency Government Committee • Manor Committee • Planning and Zoning Committee • Tri-County rails & Rail Transit Committee • Veterans Service Committee <p>Link to list of committees including a list of members.</p>
Langlade	<ul style="list-style-type: none"> • Agriculture & Extension • Airport • Board of Health • Executive/ Legislative, Safety and Loss Control • Finance/ Information Services • Forestry & Recreation • Health Insurance Trustees • Highway • Land Conservation/ Solid Waste • Personnel • Public Property/ Building Study • Public Safety • Social Services • Veterans Service • Water and Land Use Planning <p>Link to list of committees and members</p>
La Crosse	<ul style="list-style-type: none"> • Veterans, Aging and Long Term Care Committee • Executive Committee • Health and Human Services Board • Judiciary and Law Committee • Planning, Resources and Development Committee • Public Works and Infrastructure Committee <p>Link to list of standing committees and special committees</p>
Lincoln	<ul style="list-style-type: none"> • Administrative and Legislative Committee • Board of Health • Emergency Management Committee • Finance and Insurance Committee • Forestry, Land and Parks Committee • Highway • Land Services Committee • Land Enforcement, Emergency Medical Services, and Judicial Committee • Personnel Committee • Pine Crest Board of Trustees • Public Property Committee • Social Services Committee <p>Link to list of committees including lists of members.</p>

Individual County Committee Lists – taken from the County’s Website November 2019

Manitowoc	<p>Standing Committees</p> <ul style="list-style-type: none"> • Executive • Extension Education & Agriculture Committee • Finance • Highway • Land Conservation • Personnel • Public Safety • Public Works <p>Link to list of standing committees.</p>
Marathon	<p>Standing Committees</p> <ul style="list-style-type: none"> • Extension Education and Economic Development Committee • Environmental Resources Committee • Executive Committee • Finance and Property Committee • Health and Human Services Committee • Human Resources Committee • Human Resources Finance and Property Committee • Infrastructure Committee • Public Safety Committee • Technology Committee <p>Link to list of standing committees with members.</p>
Marinette	<ul style="list-style-type: none"> • 911 User • Administrative • Aging and Disability Resource Center Governing Board • Chapter 5 Grievance • Children’s Community Options Program • Comprehensive Community Services Program/ CST • Criminal Justice Coordinating Committee • Development • Elderly Services • Executive • Fair Associations, Inc. • Health and Human Services Board • Infrastructure • Land Information Council • Library Board/ Planning Committee • Marinette County Group Home Association, Inc. • Marinette County Industrial Development Corporation • Public Services • TIF Districts • Tourism Alliance • Traffic Safety Commission • Wellness Committee • Zoning Board of Adjustments <p>Link to list of committees and list of members.</p>
Marquette	<ul style="list-style-type: none"> • Ag. & Extension Education Committee • Land & Water Conservation Committee • Highway Committee • Parks & Rural Planning Committee • Property Committee • Judicial & Public Safety Committee • Planning & Zoning Committee • Board of Health • Human Services Board • Executive & Finance Committee <p>Link to list of committees</p>

Individual County Committee Lists – taken from the County’s Website November 2019

Menominee	<ul style="list-style-type: none"> • Highway Committee • Human Services Board • Joint Task Force • Land Conservation Committee/ UW Extension • Land Information Council • Legend Lake Protection & Rehabilitation District • Personnel & finance/ Building & Grounds • Plan Commission • Public Safety Committee • Veterans Commission • Zoning Committee <p>Link to list of committees and their respective information</p>
Milwaukee	<ul style="list-style-type: none"> • Economic and Community Development • Finance and Audit • Health and Human Needs • Intergovernmental Relations • Judiciary, Safety and General Services • Parks, Energy and Environment • Personnel • Transportation, Public Works and Transit • Committee of the Whole <p>Link to list of committees.</p>
Monroe	<ul style="list-style-type: none"> • Administration & Personnel Committee • Ag & Extension Committee • Board of Health • Citizens’ Advisory Committee • Economic Development Committee • Finance Committee • Highway Committee • Health & Human Services Committee • Land Conservation • Land Information Council • Long Term Support Program Committee • Monroe County Ethics Board • Property & Purchasing • Safety & Justice Committee • Rolling Hills committee • Sanitation, Planning & Zoning, Forestry and Dog Control • Solid Waste Committee <p>Link to list of links to various committees</p>
Oconto	<ul style="list-style-type: none"> • Board of Adjustments • Economic Development & Tourism • Emergency Management • Extension Education • Finance/ Insurance • Forest, Parks and Recreation/ Land Information Systems • Health and Human Services • Highway • Land Conservation • Law Enforcement/ Judiciary • Personnel & Wages • Public Property • Recycling Advisory • Solid Waste • Technology Services <p>Link to list of committees.</p>

Individual County Committee Lists – taken from the County’s Website November 2019

<p>Oneida</p>	<ul style="list-style-type: none"> • Administration • ADRC • Board of Adjustments • Board of Health • Civil Service • Conservation and UW-EX Education • County Board • County Facilities • Fair Planning Team • Forestry Land & Recreation • Labor Relations & Employee Services • Land Records • Library Board • Local Emergency Planning • Planning & Development • Public Safety • Public Works • Senior Center Advisory • Social Services • Traffic Safety • Veterans Service <p>Link to list of committees</p>
<p>Outagamie</p>	<ul style="list-style-type: none"> • Agriculture, Extension Education, Zoning & Land Conservation • Finance Committee • Health & Human Services Committee • Highway, Recycling & Solid Waste Committee • Legislative/ Audit & Human Resources Committee • Property, Airport, Recreation & Economic Development • Public Safety Committee <p>Link to list of standing committees</p>
<p>Ozaukee</p>	<p>Standing Committees</p> <ul style="list-style-type: none"> • Executive Committee • Finance Committee • Health & Human Services Committee • Natural Resources Committee • Public Safety • Public Works <p>Link to list of different types of committees. Within this link are further links to all committees.</p>
<p>Pepin</p>	<ul style="list-style-type: none"> • Board of Health • Administrative Committee • Highway Committee • Human Services • Land Conservation, Planning and UW- Extension Committee • Law Enforcement/ Emergency Government Committee <p>Link to county meetings listing committees.</p>

Individual County Committee Lists – taken from the County’s Website November 2019

Pierce	<p>Elected Committees</p> <ul style="list-style-type: none"> • Agriculture and Extension • Finance and Personnel • Highway • Human Services Board • Land Management • Law Enforcement <p>Appointed Committees</p> <ul style="list-style-type: none"> • ADRC Governing Board • Board of Adjustments • Board of Canvassers • Board of Health • Building • Emergency Medical Services • Ethics Board • Fair • Highway (Traffic) Safety Commission • Housing • Indianhead Federated Library Representatives • Industrial Development • Information Services • Land Conservation • Land Information Council • Local Emergency Planning Committee • Loss Control • Mississippi River Regional Planning • Parks • Revolving Loan Fund • Shooting Range Committee • Solid Waste Management • Veterans Service Commission • Veterans Service Committee <p>Link to list of elected committees Link to list of appointed committees</p>
Polk	<p>Elected</p> <ul style="list-style-type: none"> • Executive • General Government • Health & Human Services Board • Environmental Services • Public Safety & Highway <p>Appointed</p> <ul style="list-style-type: none"> • Aging & Disability Resources Center • Board of Adjustment • Gandy Dancer Trail Commission • Highway Safety Committee • Housing Authority • Local Emergency Planning Committee • Organizational Committee • Polk County Tourism Council <p>Link to list of elective and appointive committees</p>
Portage	<ul style="list-style-type: none"> • EMS Oversight Board • Highway Committee • Public Safety/ Emergency Management Committee <p>Link to list of committees.</p>
Price	<ul style="list-style-type: none"> • Administration Committee • Council on Aging • Executive Committee • Forestry and Parks Committee • Health & Human Services Board • Highway & Transportation Committee • Land Information Council • Land Use & UW-Extension Committee • Law Enforcement Committee • Local Emergency Planning Committee • Traffic Safety Commission <p>Link to a portal with links to each county committee.</p>

Individual County Committee Lists – taken from the County’s Website November 2019

<p>Racine</p>	<ul style="list-style-type: none"> • Economic Development & Land Use Planning Committee • Finance and Human Resources Committee • Government Services Committee • Health and Human Development • Public Works Parks and Facilities Committee • Drainage Commission <p>Link to list of committees</p>
<p>Richland</p>	<ul style="list-style-type: none"> • Agriculture and Extension Education Committee • Americans with Disability Act Compliance Committee • Audit Committee • Child Support committee • City Library Board • Commission on Aging and Disability Board • Committee on Committees • Coordinated Service Team Coordinating Committee • County Administration Study Committee • County Parks Commission • Criminal Justice Coordinating Committee • Emergency Management Committee • Fair and Recycling Committee • Finance and Personnel Committee • Health and Human Services Board • Highway and Transportation Committee • Joint Ambulance Committee • Land Conservation Committee • Land Information Council • Law Enforcement and Judiciary Committee • Mississippi Valley Health Services Commission • Nutrition Advisory Council • Property, Building and Grounds Committee • Richland County Housing Authority and Community Block Grant Committee • Rules and Resolutions Committee and Ethics Board • Southwest Wisconsin Library System Board of Trustees • Southwestern Wisconsin Regional Planning Commission • Transportation Coordinating Committee • U.W. Platteville-Richland Committee • Veterans Service Commission • Zoning Board of Adjustment • Zoning and Land Information Committee <p>Link to pdf file containing list of committees and membership.</p>

Individual County Committee Lists – taken from the County’s Website November 2019

<p>Rock</p>	<ul style="list-style-type: none"> • ADRC Advisory Committee • Agriculture & Extension Education Committee • Arrowhead Library System Board • Behavioral Health Redesign Steering Committee • Board of Adjustment • Board of Health • Children’s Community Options Program Advisory • Communications Commission • Community Action • Council on Aging • Coordinated Services Team Coordinating • Criminal Justice Coordinating Council • Education, Veterans & Aging Services • Emergency Medical Services Advisory Council • Finance Committee • General Services Committee • Health Services Committee • Housing Authority • Human Services Board • Land Conservation • Land Information Council • Local Emergency Planning Committee • PACE Council • Planning & Development • Public Safety & Justice • Public Works • Rail • Southern Wisconsin Regional Airport Board • Traffic Safety • Transportation Coordinating • Veterans <p>Link to committee list.</p>
<p>Rusk</p>	<ul style="list-style-type: none"> • ADRC • Animal Shelter Committee • Board of Adjustments • Committee on Committees • County Board • Criminal Justice Collaborating Council • Emergency Management- LEPC • Emergency Services • Ethics Board • Finance Committee • Forestry Committee • Health and Human Services • Highway Committee • Land & Water Conservation Committee • Personnel Committee • Property Committee • UW Extension Education & Recycling Committee • Zoning Committee <p>Link to committee list</p>

Individual County Committee Lists – taken from the County’s Website November 2019

Sauk	<ul style="list-style-type: none"> • Aging & Disability Resource Committee • Capital Improvement Committee • Chairperson Advisory Committee • Communication Infrastructure Committee • Complete Count Committee • Comprehensive Planning Steering Committee • Continuum of Care Development Committee • Economic Development Committee • Executive and Legislative Committee • Finance Committee • Highway and Parks Committee • Judiciary Committee • Justice Continuum Committee • Land Resources and Environment Committee • Law Enforcement Committee • Personnel and Insurance Committee • Property Committee • Revolving Loan Fund Committee • Transportation Coordination Committee • UW Extension, Arts and Culture Committee <p>Link to listing of committees.</p>
Sawyer	<ul style="list-style-type: none"> • Administration • Board of Supervisors • Economic Development & UW-Extension Committee • Finance Committee • Health & Human Services Committee • Land, Water & Forest Resources Committee • Public Safety Committee • Public Works Committee • Zoning Committee <p>Link to list of committees</p>
Shawano	<ul style="list-style-type: none"> • Administrative and Insurance Committee • Agriculture & Extension, Conservation, County Fair & County Farm • Board of Adjustment • Board of Health- Veterans Service Committee • Capital Improvement Projects • City/ County Airport Commission • City/ County Transportation Advisory Committee • Commission on Aging • East Central Regional Planning Commission • Ethics Committee • Finance Committee • Highway and Parks Committee • Highway Safety Commission • Human Services • Land Conservation Committee • Land Information Council • Library Board • Nutrition Council • Planning, Development and Zoning Committee • Public Property Committee • Public Safety Committee • Solid Waste Management Board • Tribal Affairs Committee <p>Link to list of committees</p>
Sheboygan	<p>Standing Committees</p> <ul style="list-style-type: none"> • Executive Committee • Finance Committee • Health & Human Services Committee • Health Care Center Committee • Human Resources Committee • Law Committee • Planning, Resources, Agriculture & Extension Committee • Property Committee • Transportation Committee <p>Link to on-demand meeting portal listing standing committees.</p>

Individual County Committee Lists – taken from the County’s Website November 2019

<p>St. Croix</p>	<ul style="list-style-type: none"> • Board of Adjustment • Board of Supervisors • Community Justice Collaborating Council • Council on Aging and Disabilities • Local Emergency Planning Committee • Traffic Safety • Administration Committee • Committee of the Whole • Community Development Committee • County Library Planning Committee • Executive Committee of the Community Justice Collaborating Council • Health & Human Services Board • Investment Committee • Land Information Advisory Council • Public Protection & Judiciary Committee • St. Croix Count Transit Commission • Tax Deed Land Appraisal Committee • Transportation Committee <p>Link to list of committees</p>
<p>Taylor</p>	<p>Appointed Committees</p> <ul style="list-style-type: none"> • Finance, Budget Review & Insurance • Committee on Committees & Rules <p>Elective and Statutory Committees</p> <ul style="list-style-type: none"> • Executive • Extension • Highway • Land Conservation • Board of Health • Human Services Board • Personnel • Solid Waste & Recycling • Human Services Board • Buildings, Grounds & Parks • Commission on Aging • Forestry & Recreation • Board of Adjustments • Tourism • Law Enforcement & Emergency Services • Airport • Children’s Community Options Advisory Committee • Traffic Safety Commission • Transportation Coordination • Emergency Medical • Economic Development • Veterans Service Commission • Housing Authority • Land Use Advisory • Veterans Service • Mining • Land Information • Zoning • Library Board • Broadband Committee • Information Technology • Local Emergency Planning Committee <p>Link to directory of committees, boards, etc.</p>

Individual County Committee Lists – taken from the County’s Website November 2019

Trempealeau	<ul style="list-style-type: none"> • Trempealeau County Board of Supervisors • Audit Committee • Board of Adjustment • Board of Health • Environment & Land Use • Executive/Finance • Extension Education and Communication • Health Care Center Board of Trustees • Highway Committee • Human Services Board • Law Enforcement/Emergency Management • Parks, Tourism and Economic Development Committee • Personnel/Bargaining • Property Committee <p>Link to list of standing committees with committee membership and meeting schedule.</p>
Vernon	<p>Elective</p> <ul style="list-style-type: none"> • Agriculture-Extension & Land Conservation • Highway • Human Services • Vernon Manor Trustees <p>Appointive</p> <ul style="list-style-type: none"> • Building & Facilities/Planning • Emergency Management • Finance • Health • Hidden Valleys Tourist Organization • Information Technology • ITBEC • Legal Affairs/Land Sales • Mississippi River Regional Planning Commission • Mississippi Valley Health Services • Personnel • Law Enforcement • Solid Waste Management • Tourism, Promotion, & Economic Development • Valuation Study • Veterans Service • Zoning <p>Link to page of committees.</p>
Vilas	<ul style="list-style-type: none"> • Economic Development, Tourism & UW Extension • Executive and Legislative • Finance & Budget • Forestry, Recreation & Land • Highway • Health Insurance Board of Trustees • Human Resources • Land Information • Land & Water Conservation • Law Enforcement & Emergency Management • Public Health • Public Property • Social Services • Zoning and Planning <p>Link to listing of committees</p>

Individual County Committee Lists – taken from the County’s Website November 2019

Walworth	<ul style="list-style-type: none"> • Aging & Disability Resource Center Board • Agriculture & Extension Education • Board of Adjustment • Children with Disabilities Education Board • Civil Service Board • County Zoning Agency • Finance Committee • Fire/ EMS Study Committee • Health & Human Services Board • Housing Authority Commission • Human Resource Committee • Intergovernmental Cooperation Council • Lakeland Health Care Center Board of Trustees • Land Conservation Committee • Land Information Advisory Council • Local Emergency Planning Committee • Park Committee • Public Works Committee • Traffic Safety Commission • Transportation Coordinating Committee • Wisconsin River Rail Transit Commission <p>Link to list of boards and commissions</p>
Washburn	<ul style="list-style-type: none"> • AG/ LCC • Aging and Disability Services Committee • Board of Adjustment Public Hearing • County Board of Supervisors • Criminal Justice Coordination Council • Finance Committee • Forestry, Parks and Recreation Committee • Health & Human Services Board • Highway and Dam Committee • Highway Traffic Safety Committee • Information Technology Committee • Interview Committee • Land Information council • Law Enforcement/ Emergency Management Committee • Library Planning Committee • Local Emergency Planning Committee • Personnel Committee • Public Property and Land Sale • Solid Waste/ Recycling Committee • Transit Commission • Transportation Coordinating Committee • U.W. Extension • Veteran’s & Military Affairs Committee • Veteran’s Service Commission Committee • Zoning Committee <p>Link to list of committees.</p>
Washington	<p>County Board Liaison Committees</p> <ul style="list-style-type: none"> • Administrative Committee • County Board - Final • County Board - Organizational • Executive Committee • Human Services Committee • Land Use and Planning Committee • Public Safety Committee • Public Works Committee <p>Link to list of County Board Liaison Committees and other committees</p>
Waukesha	<ul style="list-style-type: none"> • Executive Committee • Finance Committee • Health and Human Services Committee • Human Resources Committee • Land Use, Parks and Environment Committee • Judiciary and Law Enforcement Committee • Public Works Committee <p>Link to list of standing committees.</p>

Individual County Committee Lists – taken from the County’s Website November 2019

<p>Waupaca</p>	<ul style="list-style-type: none"> • Agriculture, Extension and Education Committee • Board of Adjustment • Board of Canvassers • Condemnation Commission • County Board of Supervisors • Court Security & Facilities Committee • Emergency Management, Terrorism & Safety Committee • Executive Committee • Finance Committee • Health & Human Services Board & Subcommittees • Highway Committee • Highway Special Building Committee • Human Resources Committee (sub-committee of Finance) • Information Technology Committee (sub-committee of Finance) • Land & Water Conservation Committee • Land Information Council • Law Enforcement Committee • Legislative, Judicial, Ethics, Safety & Security Committee • Local Emergency Planning Committee • Natural Resources Foundation • Outagamie Waupaca Library System • Parks and Recreation Committee • Planning and Zoning Committee • Public Property Committee • Solid Waste Management Board • Traffic Safety Commission • Veterans Service Commission • Waupaca County Economic Development Corp <p>Link to list of committees, agendas and minutes.</p>
<p>Waushara</p>	<ul style="list-style-type: none"> • Board of Adjustments • Board of Supervisors • Commission on Aging • Executive Committee • Personnel Committee • Planning and Zoning Committee • Veterans Service Commission • Veterans Service Committee <p>Link to list of boards and committees.</p>

Individual County Committee Lists – taken from the County’s Website November 2019

Winnebago	<ul style="list-style-type: none"> • Advisory Committee for Children’s Voluntary Services • ADV cap Board of Directors • Affirmative Action Commission • Aging and Disability Resource Center Committee • Aviation Committee • Board of Adjustment • Board of Canvass • Board of Health • Children’s COP Advisory Committee of the Dept. of Human Services • Committee on Committees • Courthouse Security • East Central Wisconsin Regional Planning Commission • Emergency Management Committee • Facilities and Property Management Committee • Grievance Review Board • Highway Committee • Human Services Board • Industrial Development Board • Information Systems Committee • Judiciary and Public Safety Committee • Land Conservation Committee • Land Records Council • Legislative Committee • Neenah Public Library Board of Trustees • Parks and Recreation Committee • Park View Health Center Committee • Personnel and Finance Committee • Planning and Zoning Committee • Solid Waste Management Board • Traffic Safety Commission • UW Education, Extension and Agriculture Committee • UW-Fox Valley Board of Trustees • Veterans Service Commission <p>Link to list of committees.</p>
Wood	<ul style="list-style-type: none"> • Conservation, Education & Economic Development Committee • Health & Human Services Committee • Highway Infrastructure & Recreation Committee • Judicial & Legislative Committee • Public Safety Committee <p>Link to list of committees.</p>

Washington County Board Size & Committee Restructure

Presented by:

Paul Roback

Professor & Community Development Educator

paul.roback@wisc.edu ~ 262-335-4480

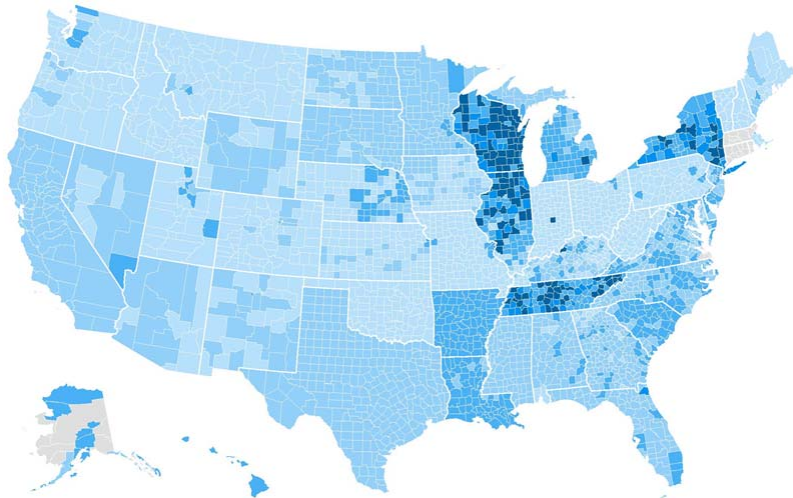


Extension

UNIVERSITY OF WISCONSIN-MADISON
WASHINGTON COUNTY

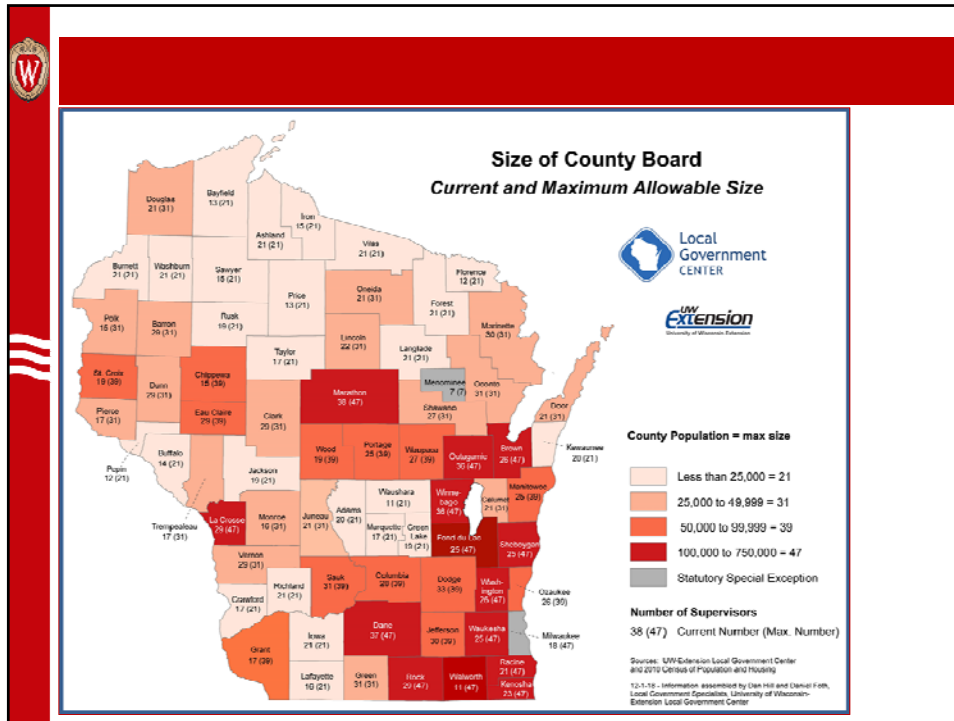


Size of County Legislative Body: 2017



Explorer.NACo.org





WashCo Administrative Form

- Administrative Coordinator- 1997
- Administrator- January 2014
 - County Board Committees Public Policy Focus
 - Agenda prep form with policy question & background info.
 - Consent agenda
 - Priority Based Budgeting
 - County Board Size & Committee Restructure (2016)
 - Board Committee Minor Adjustment (2018)
 - Part II Board Size & Committee Discussions (2019)
- County Executive- April 2020
 - Part III Board Size & Committee Discussions- Aug. 2020

2015 Study Committee

- 11 County Board Members (30 total on County Board)
- Staff
 - Administrator, Clerk, & Attorney
 - Extension Community Development Educator
- Timeline- 7 months from start to County Board adoption
 - 6 Advisory Committee meetings
 - Joint Executive & Finance Committee Mtg.
 - Presentation at County Board- solicited input
 - Advisory Committee Mtg. to incorporate feedback
- Research
 - Wisconsin Counties Association
 - Sheboygan County Administrator
 - Ozaukee County Board Chair
 - Extension Local Government Program

Committee Restructure

County Board

Library	Econ. Dev	Exec. Com.	CB Office	Admin.	Co. Attorney
---------	-----------	------------	-----------	--------	--------------

Admin. Services Com.	Ed. & Culture Com.	Finance Com.	Health & Aging Com.	Human Services Board	Plan., Cons. & Parks Com.	Public Safety Com.	Samaritan Com.	Transport Com.
----------------------	--------------------	--------------	---------------------	----------------------	---------------------------	--------------------	----------------	----------------

County Clerk
 Human Resources
 Facilities
 UW Extension
 Ag & Indus. Soc.
 Commission & Visitors Bureau
 Historical Soc.
 Finance
 Treasurer
 Health
 Vets Serv.
 ADRC
 Human Services
 Dep.
 Plan. & Parks
 Reg. of Deeds
 Emergency Mgmt.
 Medical Exam.
 Sheriff
 Clerk of Courts
 Dist. Atty.
 Samaritan
 Health Center
 Highway

County Board

Econ. Dev. & Tourism	Exec. Com. (Mayor & C/P)	CB Office	Admin.	Co. Attorney
----------------------	-----------------------------	-----------	--------	--------------

Administrative Com.	Health, Aging & Long Term Care Com.	Human Services Com.	Public Safety Com.	Public Works Com.
---------------------	-------------------------------------	---------------------	--------------------	-------------------

County Clerk
 Human Resources
 Facilities
 Info. Systems
 Finance
 Treasurer
 UW Extension
 Register of Deeds
 Ag & Indus. Society
 Historical Society
 Health
 Vets Serv.
 ADRC
 Samaritan
 Human Serv. Dep.
 Child Support
 Emergency Mgmt.
 Medical Exam.
 Sheriff
 Clerk of Courts
 Dist. Atty.
 Highway
 Transit
 Parks Maintenance
 Planning
 Land Use
 Conservation
 UW Extension

2015 Board Size Recommendation

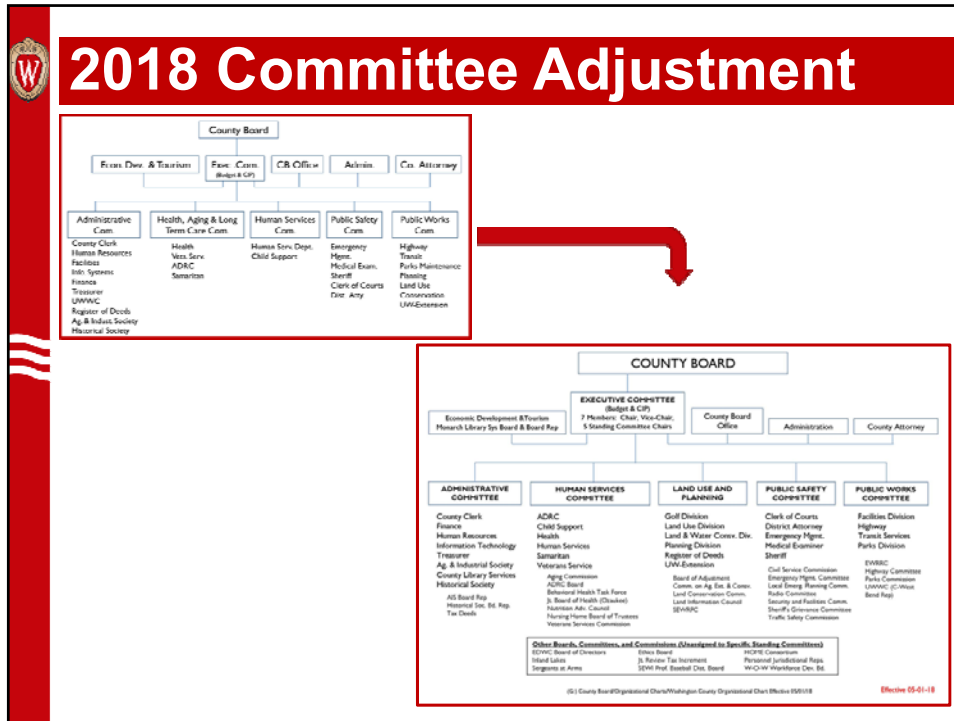
- Executive Committee + 5 Standing Committees
- Each Standing Committee has 5 members
- 5 Committees X 5 Members + Board Chair = 26
 - Exec. Com. = Board Chair, Vice Chair, & 5 Standing Committee Chairs
 - Standing Committee Chairs are elected from the full County Board

```

graph TD
    CB[County Board] --> EDT[Econ. Dev. & Tourism]
    CB --> EC["Exec. Com. (Budget & CIP)"]
    CB --> CBO[CB Office]
    CB --> Admin[Admin.]
    CB --> CA[Co. Attorney]
    
    EC --> AC[Administrative Com.]
    EC --> HALTC[Health, Aging & Long Term Care Com.]
    EC --> HSC[Human Services Com.]
    EC --> PSC[Public Safety Com.]
    EC --> PWC[Public Works Com.]
    
    AC --- AC_L["County Clerk  
Human Resources  
Facilities  
Info. Systems  
Finance  
Treasurer  
UJWWC  
Register of Deeds  
Ag. & Indust. Society  
Historical Society"]
    HALTC --- HALTC_L["Health  
Vets. Serv.  
ADRC  
Sanitation"]
    HSC --- HSC_L["Human Serv. Dept.  
Child Support"]
    PSC --- PSC_L["Emergency Mgmt.  
Medical Exam.  
Sheriff  
Clerk of Courts  
Dist. Atty."]
    PWC --- PWC_L["Highway  
Transit  
Parks Maintenance  
Planning  
Land Use  
Conservation  
UJWExtension"]
            
```

2016 Board Size

- Reduction from 30 to 26
- Occurred between decennial census
 - 2010 Used Census Block Data (3,285 in WashCo)
 - 2015 Used Existing Wards (160 in WashCo)
- Supervisor District Representation Deviation
 - 2010 = 6.12%
 - 2015 = 21.27%
- “If changing the Board size is desired, implementing the change with the 2020 Census provides the most options to create fair districts.”

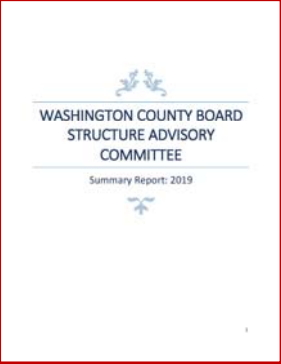


2019 Study Committee Process

- Why?
 - Census 2020 and Redistricting
 - Capture the experience of current board members in making a recommendation to 2020 County Board
 - Continuation of 2015 work- agreed to revisit board size and committee structure after several years of implementation
- Policy Question
 - What changes should be made to the structure of the Washington County Board of Supervisors as the 2020 census approaches, and the County transitions to a County Executive form of government?

2019 Study Committee


- 9 County Board Members (26 total on County Board)
- Staff
 - Administrator, Clerk, & Attorney
 - Extension Community Dev. Educator
- Timeline- 3 months from start to County Board Presentation
 - 4 Advisory Committee meetings
- Research
 - County GIS
 - Wisconsin Counties Association
 - Walworth County Board Chair & Administrator
 - Extension Local Government Program



The image shows the cover of a report titled "WASHINGTON COUNTY BOARD STRUCTURE ADVISORY COMMITTEE Summary Report: 2019". The cover features a blue and white design with a central emblem and decorative flourishes.

Change of Approach

- 2015
 - Started with # of committees and # of Supervisors per committee
- 2019
 - Focused on desired # of Supervisors




The image shows a white Y-shaped arrow pointing upwards and outwards on a dark background. The arrow has a single stem at the bottom that splits into two branches at the top, each ending in an arrowhead.

Top 10 Counties by Population (excluding MKE)

County	2018 Population	County Supervisors	Constituents/Supervisor
Dane	530,519	37	14,338
Waukesha	401,446	25	16,058
Brown	260,616	26	10,024
Racine	196,200	21	9,343
Outagamie	184,541	36	5,126
Winnebago	170,025	36	4,723
Kenosha	168,700	23	7,335
Rock	160,349	29	5,529
Washington	135,970	26	5,230
Marathon	135,922	38	3,577
		Mean / Average	8,128 (Wash. Co. Pop/Avg. = 17)


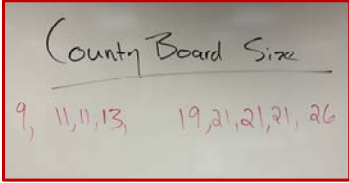
WCA Data for all WI Counties:

- Board size ranges from 7-38
- Mean (average) = 22
- Mode (value occurs most often) = 21
- Median (middle value) = 21




Study Committee Ballots:

Date	Ballot Response	Mean / Average
10/28/19	5, 11, 13, 15, 17, 17, 21, 27	16
11/15/19	9, 11, 11, 13, 19, 21, 21, 26	16
12/17/19	11, 11, 13, 13, 15, 15, 21, 21, 28	16

3 Data Points for Mean/Avg.

- Top 10 Counties (Excluding MKE)
17
- WCA Data
22 (21 for mode & median)
- Study Committee Ballots
16





Recommendation for 21 Members:

- Broader support for a gradual reduction
 - Similar to the 2016 reduction of 30 to 26 board members.
- Unknowns related to the transition to a County Executive
- Reduce by 1 committee could mean 21 members
 - 4 committees with 5 members each + county board chair = 21.
- Divisible by 3, which makes it easier to determine voting for resolutions that require a two-thirds vote



Next Steps:

- Reform Study Committee to:
 - Reaffirm Board Size
 - Establish Committee Structure
 - Role and Responsibilities of County Board Chair
 - County Board Staff Support
- Address Redistricting:
 - Part of Study Committee or form a Redistricting Committee
 - Decide on process- committee, staff, SWERPC...
 - Identify parameters





Questions & Discussion



Presented by:

Paul Roback

Professor & Community Development Educator

paul.roback@wisc.edu ~ 262-335-4480



WASHINGTON COUNTY BOARD STRUCTURE ADVISORY COMMITTEE

Summary Report: 2019



Contents

Study Committee Members	2
Report Compiled by:.....	2
Background.....	3
Scope of Work and Timeline	3
Process	3
Preferred County Board Size	4
Appendix A: Strengths & Limitations of Current Board Size & Committee Structure	5
Appendix B: County Board Size in WI by WCA.....	7
Appendix C: Walworth County Overview	12
Appendix D: County Board Presentation on 2/12/20	13
Appendix E: County Board Resolution:	21

Study Committee Members

- Will Symicek, Committee Chair
- Chris Jenkins, Committee Vice-Chair
- John Bulawa
- Frank Carr
- Don Kriefall
- Mark McCune
- Marilyn Merten
- Jeffrey Schleif
- Keith Stephan

Report Compiled by:

Paul Roback- Professor & Community Development Educator

333 E. Washington St., Suite 1200
PO Box 2003
West Bend, WI 53095
Phone: (262) 335-4480
paul.roback@wisc.edu
Web site: washington.extension.wisc.edu



An EEO/AA employer, University of Wisconsin-Madison Division of Extension provides equal opportunities in employment and programming, including Title VI, Title IX, the Americans with Disabilities Act (ADA) and Section 504 of the Rehabilitation Act requirements.

Background

Policy Question: What changes should be made to the structure of the Washington County Board of Supervisors as the 2020 census approaches, and the County transitions to a County Executive form of government?

Strategic Priority / Result Achieved: Well-governed and Administered County

Discussion: For the third time since 2014, we are having a discussion focused on County Board structure. It is especially important to evaluate structure and size at this time for two reasons. First of all, the 2020 census is approaching and will give us vital information in regards to redistricting. Secondly, for the first time in Washington County's history, the citizens will elect a County Executive. The structure of the County Board should adequately reflect the changes to population and form of government.

Scope of Work and Timeline

Below is the original scope of work and timeline presented at the October 14, 2019 Study Committee Meeting. The Committee met four times and made a recommendation to the Executive Committee on a preferred board size. This work plan and timeline will be adjusted after the Executive Committee and County Board approve a recommendation on preferred board size.

- Determine County Board Size for 2022
 - Research Comparable Counties
- Establish Committee Structure for 2022
 - Research Comparable Counties
 - Role and Responsibilities of Committees
 - Salaries
- Role and Responsibilities of County Board Chair
- County Board Staff Support
 - Research Comparable Counties
- Findings Presented at February 2020 County Board Meeting
 - Committee to meet Biweekly until Scope of Work is Complete

Process

10/14/19:

- Reviewed Advisory Committee Purpose, Scope of Work and Timeline
- Examined Board Size of Counties with the 12 Highest Populations
- Redistricting Presentation by GIS Manager Eric Damkot

10/28/19:

- Examined Historical Data & Future Projections of Redistricting
- Discussed Data and Findings of National and Wisconsin County Board Sizes & Structures
- Identified Strengths & Limitations of Current Board Size & Committee Structure- Appendix A
- Determined Questions for Wisconsin Counties Association & the National Association of Counties

11/15/19:

- Presentation by Jon Hochkammer from Wisconsin Counties Association (WCA)- Appendix B
- Reviewed and Discussed Committee of the Whole Concept
- Discussed Potential Options for Public Engagement (e.g. survey inserted with tax bills, public forums, public surveys, and an advisory referendum)

12/17/19:

- Discussion with Walworth County Officials (Board Chair and Administrator)- Appendix C
- Discussed Limitations of Public Engagement Options Researched
- Recommendation on Preferred Board Size

Meeting materials can be found on-line at <http://www.co.washington.wi.us/> by clicking on the meetings link and search for the agendas and minutes of the County Board Structure Advisory Committee.

Preferred County Board Size

At the conclusion of three Study Committee meetings, members identified their ideal county board size. The mean average after each vote was 16.

October 28, 2019:	5, 11, 13, 15, 17, 17, 21, 27	Mean average = 16
November 15, 2019:	9, 11, 11, 13, 19, 21, 21, 26	Mean average = 16
December 17, 2019:	11, 11, 13, 13, 15, 15, 21, 21, 28	Mean average = 16

At the conclusion of the December 17th meeting, the Study Committee voted 6 to 3 to recommend to the Board Executive Committee a board size of 21 members. Rationale for this recommendation include:

- Belief that there is broad-based support for a gradual reduction, which would be similar to the 2016 reduction of 30 to 26 board members.
- Unknowns related to the transition to a County Executive form of government.
- Reducing the board committee structure by 1 committee would result in needing 21 board members (4 committees with 5 members each plus the county board chair equals 21).
- The proposed board size of 21 is divisible by 3, which makes it easier to determine voting for resolutions that require a two-thirds vote.

On January 21, 2020, the Executive Committee voted 6 to 1 to forward a recommended board size of 21 to the full County Board to consider.

On February 12, 2020, Paul Roback presented a summary of Structure Advisory Committee's process, research, and findings to the Washington County Board (Appendix D). After discussion, the County Board passed 2019 Resolution 58 - Washington County Board of Supervisors - Board Size (Appendix E) to reduce the County Board size from 26 districts to 21 districts beginning with the 2022-2024 County Board session. The vote was Ayes-15; Noes-7; Absent-3; Vacant-1.

Appendix A: Strengths & Limitations of Current Board Size & Committee Structure

Current County Board Size

Strengths- what is working well?

- A lot of good lengthy discussions
- Most non-controversial votes have consensus
- Past board reduction has worked well
- The layout of the agenda packets is helpful
- With larger board, larger personalities don't dominate the conversation
- Closer contact with the citizenry
- Having enough people on committees allows for a diversity of opinions
- Each Supervisor is on one major committee
- With larger number, citizens may feel closer to their Supervisor and may feel more comfortable in contacting them
- The Executive Committee works well by having representation from each of the standing committees.

Limitations- what is hindering our success?

- Difficult committee conversations do not get forwarded to the county board- reports do not give you the tone and the full discussion that occurred
- Odd number of Supervisors is needed to prevent tie votes. A tie vote is the same as a defeated motion, which the public may perceive as the board not being in agreement.
- Awareness of what is going on isn't brought to all Supervisors- full committee conversations are not reported in the packet
- No reports from standing committee chairs at County Board meetings
- Lack newer/younger members on the County Board- how do we make it easier to attract these types of members (e.g. less meetings, electronic meetings, more use of technology...)
- Board members may lack county-wide perspective/representation
- Conflict of interest may occur when a County Board member also serves as a local elected official (e.g. fiduciary responsibility/conflict between county and local government). When there is a perceived conflict of interest, elected officials representing two government entities have not abstained from voting.
- Challenge of having Supervisors serving in positions where there may be a perceived conflict of interest (e.g. library committee members from communities that have libraries).
- Resistance to change
- Larger size hinders efficiency
- Lack the pulse of the citizenry (e.g. POWTS)
- Lack of political will to do the right thing on controversial issues- tend to bend to the noisiest people.
- Need fewer uncontested elections.
- Lack adequate and accurate news coverage- it doesn't get out to enough people
- Some Supervisors lack commitment and dedication by coming unprepared to meetings.
- The size of the board does not fairly and accurately reflect county demographics (e.g. age and gender).
- Board members who push back and challenge committee actions.
- Due to larger size, individual Supervisors can be too focused on local needs vs. the good of the whole county.

- Size effects short-term vs. long-term decisions (e.g. comprehensive planning and the road plan). People focused too narrowly on their district. The toughest decisions made by the Board have been the best decisions over the long-term.
- Size slows down our process.
- Because of the size of the board, there is an unfair advantage for those that can hold two offices at once (County Board and local office). They have a fiduciary advantage and an advantage in name recognition.

Current Committee Structure

Strengths- what is working well?

- All committees are a good size, which allows for a variety of opinions/perspectives and good debates.
- Committees have been given more authority and can take issues straight to the board.
- With the consolidated committee structure, we have become more efficient.
- Executive Committee structure with representation from each of the standing committees has worked well (similar to a Committee of the Whole).
- The effectiveness of the committees is related to good staff support systems.
- Committees meeting with department heads is important and a good thing.
- Consent agenda has increased efficiency.
- As we have done in the past, we can continue to change committees, agendas, and committee packets to make them better.

Limitations- what is hindering our success?

- Communicating committee information to the County Board- everyone is not getting the same information
- Appointment process- it is not a given that you will end up on a committee that you are interested in. This process can be examined and improved.
- There are too many departments under some committees. Not all of the department heads are able to present to the committee in-person. We need to continue to explore balancing committee workloads.
- Some may be stuck on a committee for too long and do not get the perspective/knowledge of other departments by serving on other committees. (We could explore committee term-limits or the ability to serve on multiple committees.)
- The change from operational committees to policy committees has been more difficult for some Supervisors.
- Committee Chairs may serve in their positions for too long.
- Cancellation of meetings is happening too frequently. We could use this time as educational session in order to learn more from departments.
- Supervisors resistant to change (e.g. technology and “we’ve always done it this way”).

County Board Size in Wisconsin

Washington County Board Structure
Advisory Committee Meeting
November 15, 2019



Jon Hochkammer, Outreach Manager
WISCONSIN COUNTIES ASSOCIATION

Facts Regarding County Board Size

WCA does not hold a position on the size of county boards. **This decision should be made at the local level.**

- ❖ Wisconsin adopted the New York model:
 - Made up of larger citizen boards of volunteers called county supervisors.
 - Most states use the Pennsylvania model - smaller boards with part-time or full-time paid commissioners.
- ❖ Wisconsin counties provide services on behalf of the state government
 - ie: Law enforcement, record keeping, courts, human services, road maintenance, emergency government and land conservation.
- ❖ Wisconsin requires counties to perform more services than most states in the nation.
 - Wisconsin is one of 13 states nationally requiring counties to perform human and social services.



WISCONSIN COUNTIES ASSOCIATION



Things to Consider

WISCONSIN COUNTIES ASSOCIATION

Smaller County Board Size

- Increases the opportunity for violations of the open meetings law.
- Can create difficulties meeting quorum requirements.
- Full county board may have additional work otherwise done at the committee level.
 - Time commitment may increase.
 - May require higher compensation.
 - Could exclude people from running for office.

WISCONSIN COUNTIES ASSOCIATION



Things to Consider

WISCONSIN COUNTIES ASSOCIATION

Smaller County Board Size

- Can provide efficiencies if the county reviews committee structure concurrently with board size reduction.
- Fewer meetings = more staff time for daily responsibilities.
- May broaden elected officials' perspectives.
 - More aware of the full scope of county operations.
 - Rather than serving on multiple department-specific committees, they set policy for more county departments and programs.
- May reduce representation in rural areas.
- Can make the redistricting process more difficult.
- Creates opportunities for special interest groups to get more involved and have less people to lobby or influence.

WISCONSIN COUNTIES ASSOCIATION



Things to Consider

WISCONSIN COUNTIES ASSOCIATION

Larger County Board Size

- Lessens the opportunity for violations of the open meetings law.
- Can help meet quorum requirements.
- More work can be done at the committee level vs. by the full board.
- Workload can be spread over a larger group of people.
 - Time commitment may decrease.
 - May reduce overall expenses.
 - Could allow more people to run for office.

WISCONSIN COUNTIES ASSOCIATION



Things to Consider

WISCONSIN COUNTIES ASSOCIATION

Larger County Board Size

- Can create duplication of efforts or overlap with more committees.
- More meetings = less staff time for daily responsibilities.
- May bring more expertise and life experience to the debate.
- May increase rural representation
- Special interest groups have more people to lobby and may lessen their influence.

WISCONSIN COUNTIES ASSOCIATION

Common Misconceptions



WISCONSIN COUNTIES ASSOCIATION

Misconception	Truth
Smaller board size creates more competition for board seats.	Counties that have reduced their size in the past decade have not experienced greater competition for supervisor elections.
Smaller boards cost less	Compensation (per diem or salary) increases may be warranted because of increased workload.
Smaller boards require members to become full-time supervisors.	Smaller board size does not require full-time supervisors, but supervisor responsibilities may increase.
Smaller boards offer the same opportunity for diversity, background, and experience as larger boards.	Larger boards may provide more opportunities for diversity of backgrounds and experiences that may be beneficial to the public.
Smaller board size allows the public to more easily identify their elected representative	Smaller board size may result in less accountability for elected officials. If an elected official represents fewer people, the public is more likely to know their elected official personally and may be more comfortable to contact them.

- ❖ Since the passage of **2005 Act 100**:
 - Eight counties had referendums regarding board size all in 2006 - 07
 - Five referendums passed, and three failed.
 - Douglas County had a referendum that failed in April 2007, 28 - 7
 - Fond du Lac County had a referendum pass in November 2006, from 36 to 18. In 2012, the board increased their size to 25
 - Jackson County had a referendum that failed in April 2007, 19 - 11
 - In Price County, the first referendum to go from 21 - 7 failed in April 2006, however in November 2006, the second referendum to go from 21 - 13 passed.
 - Rusk County had a referendum that failed in April 2007, 21 to 13
 - Walworth County had a referendum pass in April 2007, 25 to 11
 - Waushara County had a referendum pass in November 2006, from 21 to 11
 - Wood County had a referendum pass in November 2006, from 38 to 19
 - At the same time, a few counties reduced their board size on their own.
 - In 2005, there were a total of **1,789** county supervisors statewide.
 - In 2010, there were a total of **1,680** county supervisors statewide.

WISCONSIN COUNTIES ASSOCIATION

Recent Changes to Board Size



- ❖ In 2012, following the federal required redistricting:
 - 14 counties reduced their county board size ranging from 1 member (Milwaukee County) to 14 members Chippewa County.)
 - Buffalo County - 16 to 14
 - Chippewa County - 29 to 15
 - Columbia County - 31 to 28
 - Dodge County - 37 to 33
 - Douglas County - 28 to 21
 - Fond du Lac County - 18 to 25 (increased the board by 7)
 - Kenosha County - 28 to 23
 - La Crosse County - 35 to 29
 - Milwaukee County - 19 to 18
 - Ozaukee County - 31 to 26
 - Portage County - 29 to 25
 - Racine County - 23 to 21
 - Rusk County - 21 to 19
 - Shawano County - 30 to 27
 - Sheboygan County - 34 to 25
 - In 2012, there were a total of **1,620** county supervisors statewide.

WISCONSIN COUNTIES ASSOCIATION

Recent Changes to Board Size



- ❖ **2014:** Polk County reduced its board size from 23 to 15.
- ❖ **2016:** Monroe County reduced its size from 24 to 16 and Washington County reduced its size from 30 to 26 members.
- ❖ No changes in board size in **2018**.
- ❖ Currently there are **1,600** elected county board supervisors statewide.

WISCONSIN COUNTIES ASSOCIATION

Recent Changes to Board Size



Appendix C: Walworth County Overview

Presenters: Administrator Dave Bretl and County Board Chair Nancy Russell

Discussion Notes:

- Based on the recommendation of a Blue Ribbon Study Committee, the board was downsized from 35 to 25 members in 2004.
- As a result of WI Act 100, a tax-payer petition resulted in a binding referendum that reduced the board to 11 members in 2008. The driver for this position may have been opposition to a significant levy increase the year before.
- Board reduction has not resulted in significant cost savings. The savings are pretty small in comparison to the overall budget.
- Board reduction has increased board member accountability and engagement. Members review materials ahead of time, are prepared for meetings, and are knowledgeable of the topics being discussed.
- Board reduction has not had a dramatic impact on increasing competitive elections. Most elections are uncontested. The only exception was the first election after the downsizing when incumbent supervisors had to run against each other.
- Board Chair believes 11 members is a little small, especially with one member who winters in Florida annually and when there was a board vacancy due to a death. Board recently affirmed that they wanted to stay at 11 members.
- Committees meet the week following the board meeting. Most of the Board's work is done at the committee level. Each committee has five members and several other Supervisors attend to learn more about the topics being discussed. It is common to have a quorum of the board attending committee meetings, which is publicly posted as such.
- Since most discussions and decisions happened at the committee level, board meetings tend to only last 15 minutes. The board members respect the work of the committee and most board agenda items pass unanimously. Some of the public may view this as the board "rubber-stamping" items, without knowing that items have been discussed at the committee level.
- County conducts a workshop for those interested in running as a county board member.
- County board and committee meetings occur during the day, which may be a contributing factor for a lack of younger members serving on the board. Members are retirees or self-employed.
- There are no term-limits for serving on a committee. There is a county ordinance that details process for assigning members to committees.
- Board members are reluctant to raise their own pay. Each member earns \$650 per month and the board chair earns \$1,200.
- Use the committee of the whole several times a year to provide education (e.g. open meetings and public records laws).
- When Walworth had an Executive Committee comprised like Washington's (made up of committee chairs), some members viewed it as a "Super Committee" and found it disenfranchising.
- SEWRPC conducted their last redistricting. Each board member represents ~10,000 residents.
- There has not been a concern regarding urban vs. rural representation. Currently, 7 members reside in towns and 4 reside in incorporated areas (City or Village).
- With 11 members, it is fairly easy to call special meetings.
- Board members do not discuss business outside of meetings, or e-mail each other.
- With 11 members, each knows each other and their ideals.

Slide 1



Washington County
EST 1838
WISCONSIN

Washington County Board Structure Advisory Committee

Slide 2

Study Committee Members




- Will Symicek, Chair
- Chris Jenkins, Vice-Chair
- John Bulawa
- Frank Carr
- Don Kriefall
- Mark McCune
- Marilyn Merten
- Jeffrey Schleif
- Keith Stephan

Board Structure Advisory Committee

DISCOVER. CONNECT. PROSPER.

Policy Question:




What changes should be made to the structure of the Washington County Board of Supervisors as the 2020 census approaches, and the County transitions to a County Executive form of government?

Board Structure Advisory Committee

DISCOVER. CONNECT. PROSPER.

Why Now?



- Census 2020 and Redistricting
- Capture the experience of current board members
- Continuation of 2015 work- agreed to revisit board size and committee structure after several years of implementation

Board Structure Advisory Committee

DISCOVER. CONNECT. PROSPER.

Scope of Work:




- Determine County Board Size for 2022
- Establish Committee Structure for 2022
- Role and Responsibilities of County Board Chair
- County Board Staff Support

Board Structure Advisory Committee

DISCOVER. CONNECT. PROSPER.

Process Timeline:




- Met 4 times from October 14th to December 17th
- Redistricting Presentation
- Researched comparable counties
- Identified strengths & limitations of current board size & committee structure
- Guest presentations from WCA and Walworth County

Board Structure Advisory Committee

DISCOVER. CONNECT. PROSPER.


Timeline to Redistricting:



- April 1, 2020- Census Day
- April 1, 2021- Census Block Data Available
- April-May 2021- County Adopts Tentative Supervisory District Plan
- June-October 2021- Local Gov. Plans, County Public Hearing, and Submit Final Plan to State
- April 2022- Election with New Supervisory Districts

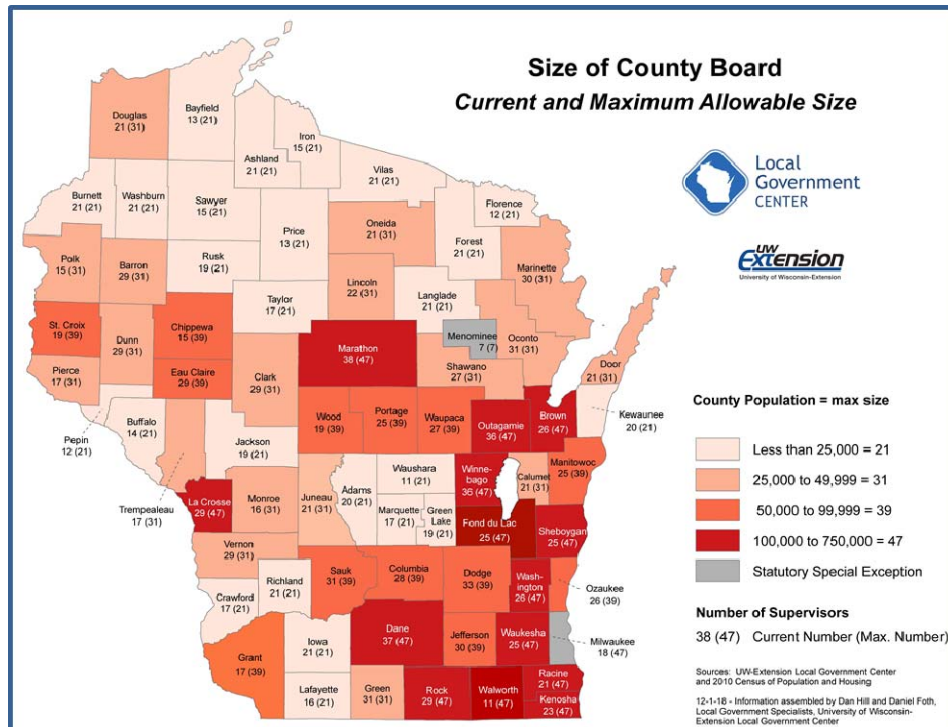
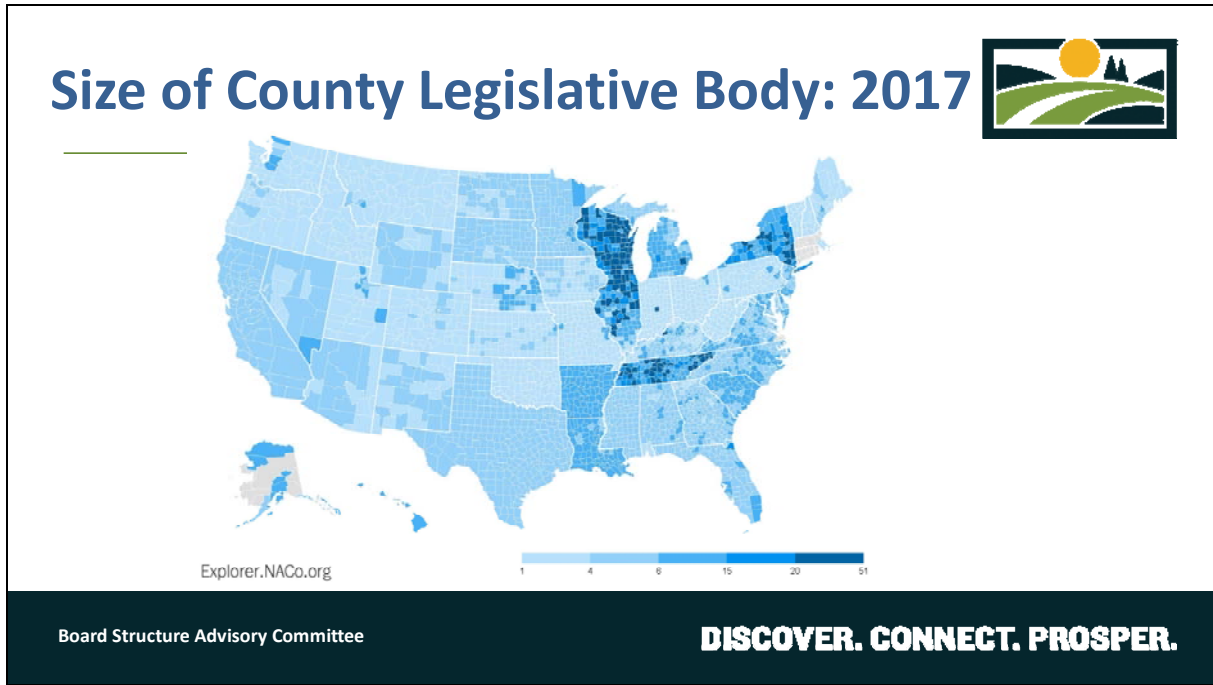
Board Structure Advisory Committee **DISCOVER. CONNECT. PROSPER.**

Redistricting Considerations:




- If you are going to reduce the size of the board, due it in conjunction with redistricting
- It is significantly easier to create fair districts that meet all constitutional, statutory, and county requirements
- In 2011, deviation between smallest and largest districts was 6%. In 2015, it was 21%.

Board Structure Advisory Committee **DISCOVER. CONNECT. PROSPER.**




Top 10 Counties by Population (excluding MKE)



County	2018 Population	County Supervisors	Constituents/Supervisor
Dane	530,519	37	14,338
Waukesha	401,446	25	16,058
Brown	260,616	26	10,024
Racine	196,200	21	9,343
Outagamie	184,541	36	5,126
Winnebago	170,025	36	4,723
Kenosha	168,700	23	7,335
Rock	160,349	29	5,529
Washington	135,970	26	5,230
Marathon	135,922	38	3,577
		Mean / Average	8,128 (Wash. Co. Pop/Avg. = 17)

Board Structure Advisory Committee **DISCOVER. CONNECT. PROSPER.**

WCA Data for all WI Counties:



- Board size ranges from 7-38
- Mean (average) = 22
- Mode (value occurs most often) = 21
- Median (middle value) = 21

Board Structure Advisory Committee **DISCOVER. CONNECT. PROSPER.**

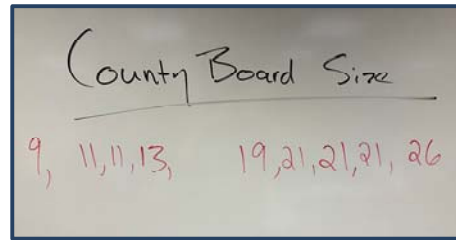
Study Committee Ballots:



Date	Ballot Response	Mean / Average
10/28/19	5, 11, 13, 15, 17, 17, 21, 27	16
11/15/19	9, 11, 11, 13, 19, 21, 21, 26	16
12/17/19	11, 11, 13, 13, 15, 15, 21, 21, 28	16



Board Structure Advisory Committee



DISCOVER. CONNECT. PROSPER.

Three Data Points for Mean/Avg.



- Top 10 Counties (Excluding MKE) 17
- WCA Data 22 (21 for mode & median)
- Study Committee Ballots 16

Board Structure Advisory Committee

DISCOVER. CONNECT. PROSPER.

Recommendation for 21 Members:



- Broader support for a gradual reduction
 - Similar to the 2016 reduction of 30 to 26 board members.
- Unknowns related to the transition to a County Executive
- Reduce by 1 committee could mean 21 members
 - 4 committees with 5 members each + county board chair = 21.
- Divisible by 3, which makes it easier to determine voting for resolutions that require a two-thirds vote

Board Structure Advisory Committee

DISCOVER. CONNECT. PROSPER.

Next Steps:



- Reform Study Committee to:
 - Reaffirm Board Size
 - Establish Committee Structure
 - Role and Responsibilities of County Board Chair
 - County Board Staff Support
- Address Redistricting:
 - Part of Study Committee or form a Redistricting Committee
 - Decide on process- committee, staff, or SWERPC
 - Identify parameters

Board Structure Advisory Committee

DISCOVER. CONNECT. PROSPER.

Appendix E: County Board Resolution:

1
2
3
4
5
6
7
8
9
10
11
12
13
14
15
16
17
18
19
20
21
22
23
24
25
26
27
28
29
30
31
32
33
34
35
36
37
38
39
40
41
42
43
44
45
46
47
48
49
50

WASHINGTON COUNTY, WISCONSIN

Date of enactment: _____
Date of publication: _____

2019 RESOLUTION 58

Washington County Board of Supervisors – Board Size

WHEREAS, as part of the County’s strategic priority of a well governed and administered County, the County Board Chairman established a special committee (County Board Structure Advisory Committee) for the purposes of evaluating and making recommendations to the Executive Committee regarding county board size; and

WHEREAS, the County Board Structure Advisory Committee recommended a proposal for the Executive Committee’s consideration to reduce the number of Supervisory Districts from 26 districts to 21 districts; and

WHEREAS, the Executive Committee has reviewed the County Board Structure Advisory Committee’s proposal and recommends a reduction in Supervisory Districts from 26 districts to 21 districts to the County Board for consideration;

NOW, THEREFORE, BE IT RESOLVED by the Washington County Board of Supervisors that 21 Supervisory Districts are created for implementation by the April 2022 election for the 2022-2024 County Board session.

BE IT FURTHER RESOLVED that after completion of the 2020 census, the County Clerk shall prepare multiple plans for consideration, each comprised of 21 Supervisory Districts, consistent with the principles set forth in §59.10(3)(cm), Wis. Stats.

BE IT FURTHER RESOLVED that the Executive Committee shall consider the plans prepared by the County Clerk and make a timely recommendation to the County Board.

VOTE REQUIREMENT FOR PASSAGE: Majority

RESOLUTION SUMMARY: Resolution reducing County Board size from 26 districts to 21 districts beginning with the 2022-2024 County Board session.

APPROVED: _____ Introduced by members of the EXECUTIVE COMMITTEE as filed with the County Clerk.

Bradley S. Stern, County Attorney

Dated _____

Considered _____ Donald A. Kriefall, Chairperson

Adopted _____

Ayes ___ Noes ___ Absent ___

Voice Vote _____

(A reduction of 5 County Board supervisors will generate some nominal savings due to reduced per diems and Board compensation. Based on current 2020 rates, savings is estimated at \$33,500.)

2015

Washington County Board Structure Advisory Committee



Although the Study Committee has reviewed the elements of this report throughout the process, they have not had the opportunity to review the compilation of their work as it appears in this report format.

CONTENTS

Document Prepared By:.....	2
Background.....	3
Study Committee Timeline & Process.....	3
Strengths & Weaknesses of Current Committee Structure.....	4
Observations & Objectives.....	5
Alternatives Considered.....	6
Committee Structure.....	6
Process for Electing Leadership / Executive Committee.....	8
Recommendations.....	8
Committee Structure.....	8
Process for Electing Leadership / Executive Committee.....	9
Additional Recommendations.....	9
Appendix A.....	11

DOCUMENT PREPARED BY:

Paul Roback
Associate Professor, Community Development Educator

UW-Extension, Washington County
333 E. Washington St., Suite 1200
PO Box 2003
West Bend, WI 53095
Phone: (262) 335-4480
Fax: (262) 335-4863
paul.roback@ces.uwex.edu
Web site: <http://washington.uwex.edu>



An AA/EEO employer, UW-Extension provides equal opportunities in employment and programming, including Title IX and ADA requirements.

BACKGROUND

With the onset of hiring Washington County's first Administrator, the need to examine the Washington County board size and committee structure was identified by the County Board Chairman. A fourteen member study committee consisting of eleven county board members and three staff was established to research and provide a recommendation to the County Board.

At the Study Committees first meeting, it was suggested to engage UW-Extension Washington County Community Development Educator Paul Roback in the facilitation of this process.

This draft report compiles the work and recommendations of the Study Committee as of their March 18, 2015. The Study Committee will continue to meet to address county board size, compensation and the responsibilities of the Board Chair.

STUDY COMMITTEE TIMELINE & PROCESS

October 1, 2014 - Advisory Committee Meeting

- Established advisory committee purpose, schedule and function
- Reviewed committee structure of Washington County and 15 other counties
- Established task list and timeline

November 3, 2014 - Advisory Committee Meeting

- Developed a strategy to engage county board members and department heads in study committee process
- Identified strengths and weaknesses of current Washington County committee structure

December 10, 2014 - Advisory Committee Meeting

- A representative from the Wisconsin Counties Association presented on the role of county board members and committees with an Administrator structure.
- Reviewed current Washington County standing committees

January 5, 2015 - Advisory Committee Meeting

- Guest presentations from Sheboygan County Administrator and Ozaukee County Administrator and Board Chair
- Presented process for reviewing committee structure options

January 19, 2015 - Advisory Committee Meeting

- Due date for committee members to send organizational chart preferences to County Board Chairman

January 29, 2015 - Advisory Committee Meeting

- Reviewed and discussed sample committee structures- used large display to easily move committees & department functions around
- Identified trends observed from committee organizational chart homework
- Identified questions to be further researched

February 2, 2015 - Advisory Committee Meeting

- Refined draft committee structure

- Addressed outstanding committee items, including:
 - Term-limits on committees
 - Who appoints committee members
 - Who appoints/elects committee chairs
 - Citizens on committees
 - How many committees can a supervisor be on? How many power committees?
 - Chair only one committee
 - Other/special committees
 - Transportation committee- elected or appointed
 - Bill review committee- is it necessary?
 - Number of supervisors on a committee
 - Keppler Rule

February 8, 2015 - Joint Meeting of Executive & Finance Committees

- Presented Advisory Committee work to date with three options for committee structure
- Sought feedback for County Board presentation

February 9, 2015 - County Board Meeting

- Presented Advisory Committee work to date with three options for committee structure
- Sought initial feedback from the County Board

February 18, 2015 - Department Head Meeting

- Presented Advisory Committee work to date with three options for committee structure
- Sought Department Head preference on committee structure

March 18, 2015 - Advisory Committee Meeting

- Discussed & finalized recommendation on county board committee structure
- Discussed & finalized recommendation on a process for electing county board and committee leadership

April 21, 2015 - County Board

- Vote on recommendation from advisory committee

Additional Topics to Address after County Board Vote:

1. County Board Size
 - a. Size- determine appropriate size of county board
 - b. Timeline- determine when reductions should take place
 - c. Process and Criteria for Redistricting- determine objectives that new districts must achieve
2. County Board Salaries & Per Diem
3. County Board Chair- work hours and salary

STRENGTHS & WEAKNESSES OF CURRENT COMMITTEE STRUCTURE

As a starting point for considering why to reorganize the county committee structure, advisory committee members identified strengths and weaknesses of the current structure. Strengths should be carried over to the new committee structure and weaknesses should be proactively addressed with a new committee structure.

Strengths:

- Department Heads can relate to County Board members and County Board members understand Departments
- Informed County Board members make informed decisions
- Committees are operationally focused- committees understand department operations
- County Board members on committees have a lot of say on committees- they can impact Departments
- New committee reports and posted on website
- Committee size of 5 is appropriate
- Good meeting attendance- an indication that people take their job seriously and that the meetings have purpose

Weaknesses:

- County Board may be too hands-on with administrative functions
- Committee meetings have items that may not be important/necessary
- County Board members become committee/department advocates during budget process
- A lot of committees for the Administrator to manage effectively
- Committees not service oriented
- Some meetings do not have enough meat/substance
- Report focused- sometimes too detailed
- Sometimes go beyond the scope of the committee by encroaching on the operations of other organizations operations, such as the Agriculture & Industrial Society (AIS) and Historical Society

OBSERVATIONS & OBJECTIVES

In preparation for the January 29th Study Committee meeting, members submitted their preferences for county board committee structures. The following observations from this exercise were discussed at the January 29th meeting:

- Average number of committees (including Executive) was between 7 and 8 (7.7)
- Most frequently combined committee included Health & Aging with Samaritan
- Several instances of combining Planning, Conservation & Parks Committee (PCPC) with either Transportation or Education & Culture Committees
- Public Safety Committee remained the same on each organizational chart

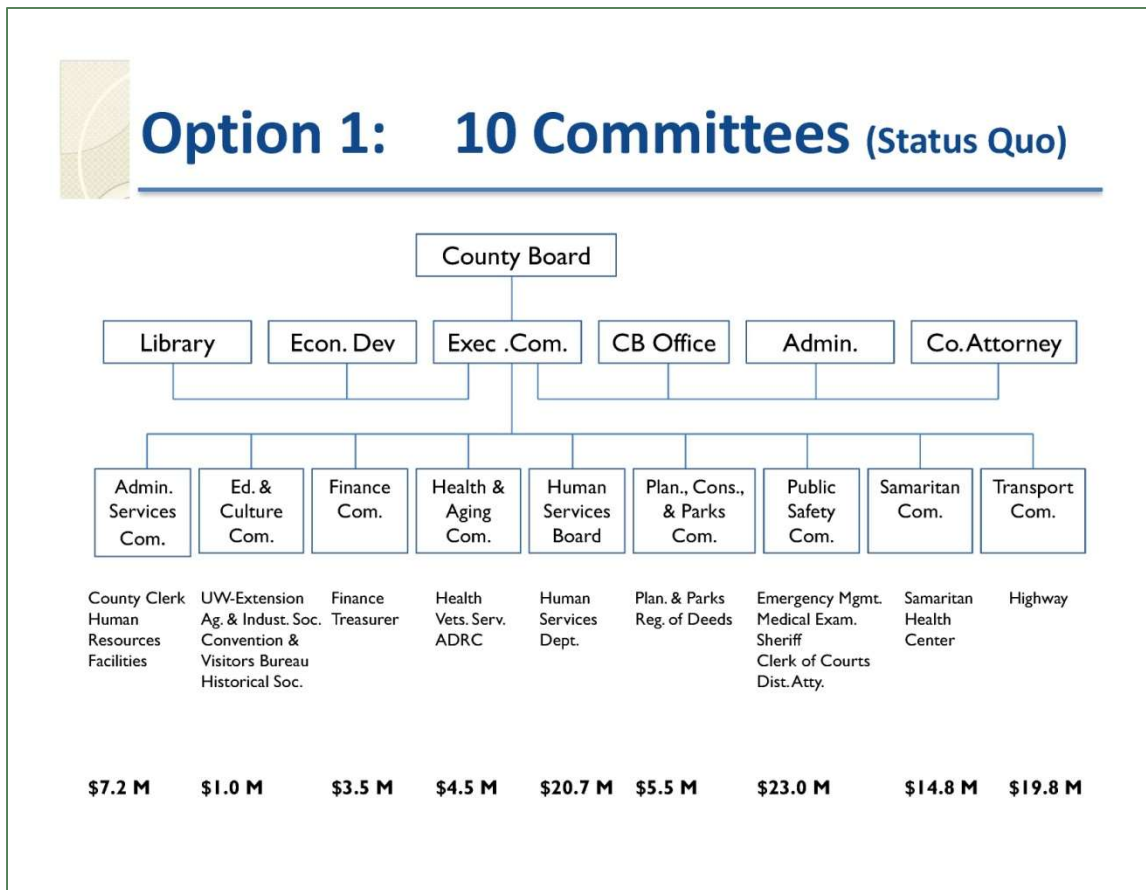
In order to assist decision-making, Advisory Committee members developed the following objectives to be considered in the development of a new committee structure:

1. Shared / balanced workload for each committee and supervisor
2. Even budget distribution among committees
3. Even personnel distribution among committees
4. Even department distribution among committees
5. Streamline processes / efficiencies- reduce the number of committees that decisions need approval from
6. New structure agrees with State Statutes

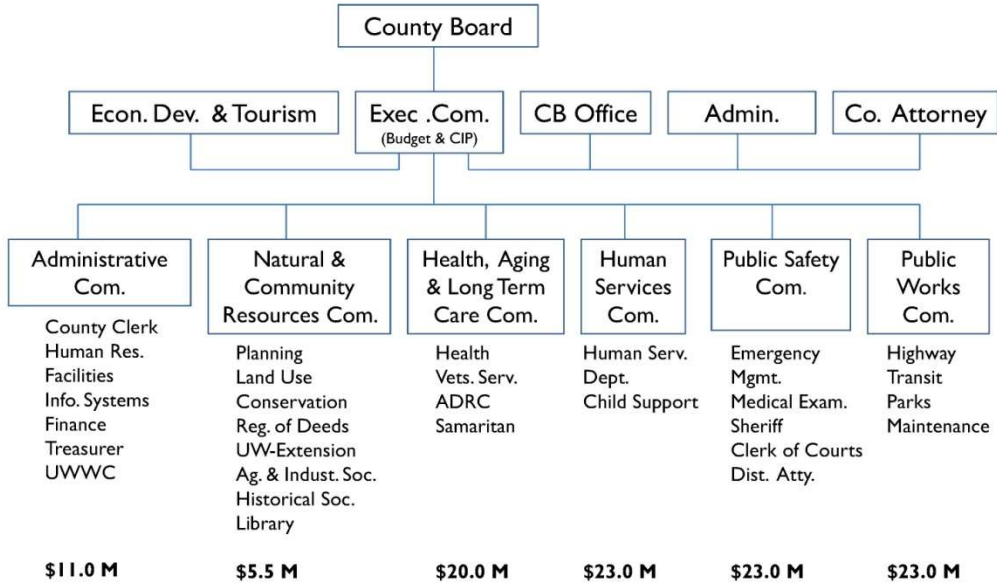
ALTERNATIVES CONSIDERED

COMMITTEE STRUCTURE

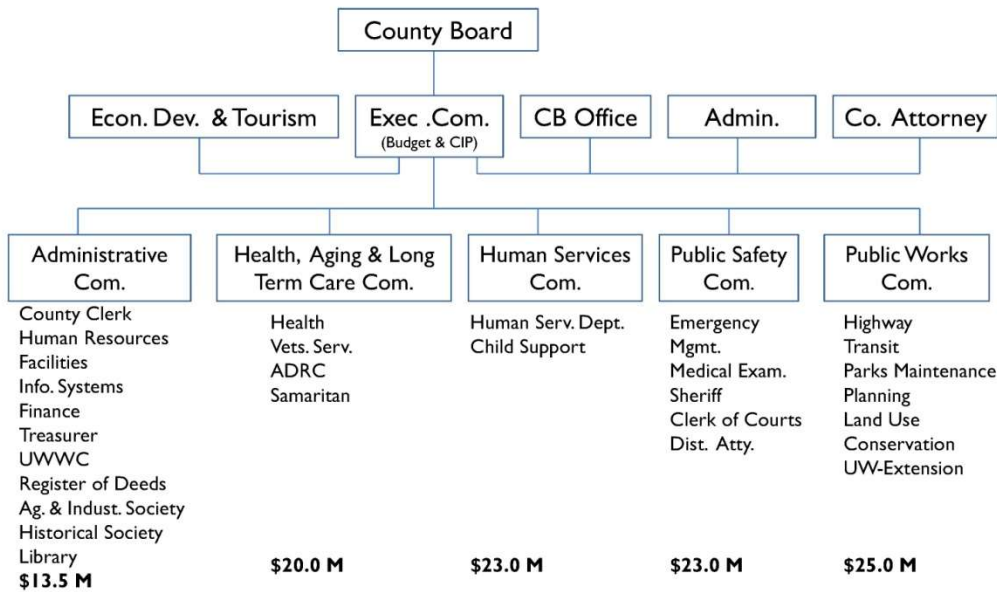
Using a “Sticky Wall” (Appendix A) at the January 29th meeting, committee members were able to start with the current committee structure (Option 1- 10 Committees /Status Quo) and then apply the observations and objectives to design two committee structure alternatives (Option 2- 7 Committees and Option 3- 6 Committees). The following is the result of this process.



Option 2: 7 Committees



Option 3: 6 Committees



PROCESS FOR ELECTING LEADERSHIP / EXECUTIVE COMMITTEE

In addition to committee structure, committee leadership was also reviewed. In Options 2 & 3, the budget review process is moved to the Executive Committee, whose membership includes the chairs of each of the standing committees. The advantage of this change is that the budget will be reviewed by those that have knowledge of the departments that report to each of the standing committees. Currently, the budget is reviewed by the Finance Committee and it is possible that members who serve on this committee may not have working knowledge of specific county departments because none of the committee members serve or have served on the specific department's oversight committee. Several alternatives to how standing committee chairs are elected were discussed. These include:

Option 1- 7 member Executive Committee

1. Elect Board Chair
2. Elect Board Vice-Chair
3. Elect Board 2nd Vice-Chair
4. Elect 4 additional Executive Committee members
5. County Board Chair appoints 5 Executive Committee members to serve as Standing Committee Chairs

Option 2- 6 member Executive Committee

1. Elect County Board Chair
2. Elect 5 Standing Committee Chairs
3. From the 5 Standing Committee Chairs, elect a Vice-Chair and 2nd Vice-Chair

Option 3- 7 member Executive Committee

1. Elect Board Chair
2. Elect Board Vice-Chair
3. Elect 5 Standing Committee Chairs (randomly select order of election by pulling committee names out of a hat)
4. Elect 2nd Vice-Chair from the pool of 5 Standing Committee Chairs

RECOMMENDATIONS

COMMITTEE STRUCTURE

Recommended Option 3: 6 Committees (5 Standing Committees + Executive Committee)

Decision Points

- Most closely balances objectives
 - Shared / balanced workload for County Board Supervisors
 - Even budget distribution among committees
 - Even personnel distribution among committees
 - Even department distribution among committees
 - Streamline processes- reduce the number of committees that decisions need approval from
- Department Heads overwhelming in favor of 6 committees
- Concerns expressed if UW-Extension should be in Public Works or Administrative
- Concerns expressed of merging planning functions with Public Works

PROCESS FOR ELECTING LEADERSHIP / EXECUTIVE COMMITTEE

Recommend Option 3:

1. Elect Board Chair
2. Elect Board Vice-Chair
3. Elect 5 Standing Committee Chairs (randomly select order of election by pulling committee names out of a hat)
4. Elect 2nd Vice-Chair from the pool of 5 Standing Committee Chairs

Decision Points

- Desirable to have an odd number on the Executive Committee (Board Chair, Vice-Chair & 5 Standing Committee Chairs = 7)
- Priority placed on electing Standing Committee Chairs. It is desirable to have the county board decide who is most qualified to Chair each Standing Committee.

ADDITIONAL RECOMMENDATIONS

Through the Study Committee process, a number of related items were discussed and addressed.

- 1) Term-limits on committees
No term limits proposed for committee, committee chair or board chair service.
- 2) Who appoints committee members?
County Board Chair appoints committee members, except for committee chairs. Chairs are elected by the county board.
- 3) Who appoints/elects committee chairs?
County Board elects committee chairs
- 4) Citizens on standing committees
No citizens on standing committees. Citizen appointments to subcommittees, commissions and boards remains as it is currently and/or as required by state statute.
- 5) How many committees can a supervisor be on? How many power committees? (Keppler Rule, §2.05(5)
Eliminate Keppler Rule. No committee is perceived to have more power than another committee. Every Supervisor will serve on at least one standing committee. They may serve on additional committees based on their and the board chair's preference.
- 6) Chair only one committee
Yes. Remains as it is currently, §2.05(7)
- 7) Other/special committees
Creation of and appointments continue as they are currently made.
- 8) Transportation committee- elected or appointed
Treated the same as other standing committees- county board elects chair and board chair appoints committee members.

9) Bill review committee- is it necessary?

Sec. 59.52(12). The board “examine and settle all accounts” itself or may delegate bill review to a standing committee if the amount does not exceed \$10,000 OR to the standing committee chairperson if it adopts a resolution by majority vote delegating such authority. Resolution must be adopted every year. §2.42(7) of the County Code.

10) Number of supervisors on a committee

Five supervisors per standing committee. Executive committee size is 7, regardless if there are 6 or 7 total committees (Standing Committees plus Executive Committee). Each standing committee chair serves on the executive committee.

11) 2nd County Board meeting per month for educational items

A second county board meeting per month focused on education was discussed. No formal actions would be taken during these meetings. The Study Committee recommends continuing with the current practice, that the County Board Chair can call additional meetings as needed.

12) Budget review

Recommended to be moved to the executive committee, which has representation from each of the standing committees.

APPENDIX A

Using a “Sticky Wall” to apply study committee observations and objectives to design committee structures alternatives.

Option 1- 10 Committees (Status Quo)



Option 3- 6 Committees

