



MARATHON COUNTY INFRASTRUCTURE COMMITTEE

AGENDA

Date & Time of Meeting: **Thursday, August 1st, 2019 at 9:00 a.m.**

Meeting Location: Marathon County Highway Department, **1430 West Street, Wausau, WI**

Members: **John Robinson, Chair; Richard Gumz, Vice-Chair; Allen Opall; Jeff Johnson, Thomas Seubert; Alan Christensen; Sandi Cihlar**

Marathon County Mission Statement: Marathon County Government serves people by leading, coordinating, and providing county, regional, and statewide initiatives. It directly, or in cooperation with other public and private partners, provides services and creates opportunities that make Marathon County and the surrounding area a preferred place to live, work, visit, and do business. (Last updated: 12/20/05)

Infrastructure Committee Mission/Purpose: Provide leadership for the implementation of the Strategic Plan, monitoring outcomes, reviewing and recommending to the County Board policies related to technology and infrastructure initiatives of Marathon County, which includes, but is not limited to, highways, airways, waterways, etc.

1. Call to Order
2. Public Comment Period
3. Approval of the Minutes of the July 11th, 2019, Infrastructure Committee Meeting.
4. Policy Issues Discussion and Potential Committee Determination
 - A. Request of Change of Access Restrictions for Parcels 5 & 9 of West Arterial (County Road "R") Right of Way Plat, State R/W Project Number 6675-00-01
 - B. Policy and Procedure Manual Update
 1. Economic Criteria for Highway Upgrades to All Season Roads
 - C. Setting County Road Priorities for New State Budget
5. Operational Functions required by Statute, Ordinance, or Resolution:
6. Educational Presentations and Committee Discussion
 - A. County Regulation Authority on Wind Farms
 - B. Broadband Update, Melinda Osterberg
 - C. Cyber Security, Klein
 - D. County Road "K" Wausau to North County Line Public Official Meeting, update
 - E. ATV/UTV Update of Request
 - F. Wisconsin County Highway Association Update
 - G. Highway Commissioner's Report
 - H. City County Information Technology Commission Report
7. Announcements:
 - A. Future meetings and agenda items:
 1. September 5th, 2019 Monthly Infrastructure Meeting
 2. 2019 Culvert Bridge Aid Program
 3. 2019 Fall Legislative Breakfast, October 18th, 2019 Holiday Day Inn Stevens Point Wisconsin
8. Adjourn

Any person planning to attend this meeting who needs some type of special accommodation in order to participate should call the County Clerk's Office at 715 261-1500 or e-mail infomarathon@mail.co.marathon.wi.us one business day before the meeting.

SIGNED /s/ John Robinson
Presiding Officer or Designee

FAXED TO: Wausau Daily Herald, City Pages,
FAXED TO: and Other Media Groups
FAXED BY: Kendra Pergolski
FAXED DATE: _____
FAXED TIME: _____

NOTICE POSTED AT COURTHOUSE
BY: _____
DATE: _____
TIME: _____

CONVENTIONAL SIGNS AND ABBREVIATIONS

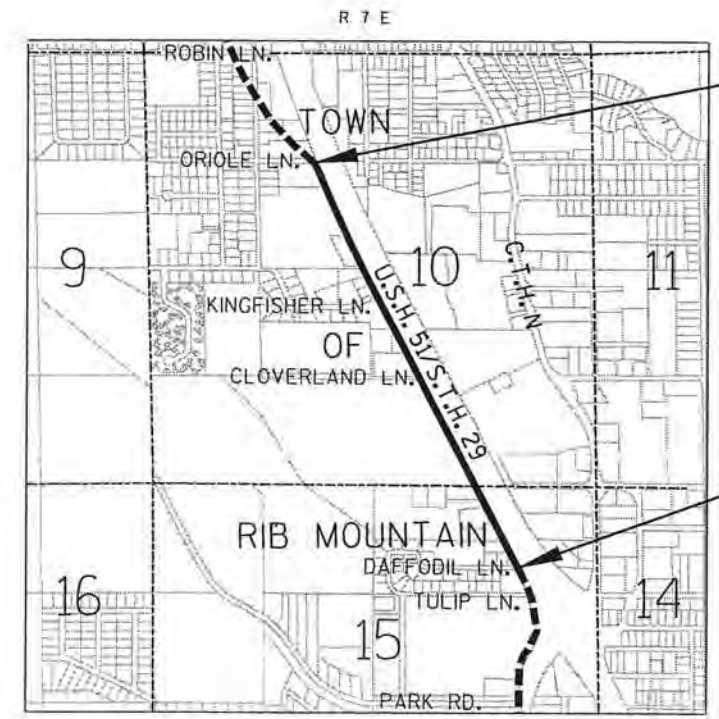
- A.P. ACCESS POINT
- AC. ACRES
- AG. AGRICULTURAL
- A.H. AHEAD
- ALUM. ALUMINUM
- ET.AL. AND OTHERS
- BK. BACK
- ASPH. ASPHALT
- C.E. COMMERCIAL ENTRANCE
- C.M. CABLE MARKER
- CL. CENTERLINE
- C.T.H. COUNTY TRUNK HIGHWAY
- C.S.M. CERTIFIED SURVEY MAP
- CONC. CONCRETE
- COR. CORNER
- CULV. CULVERT
- d/b/a DOING BUSINESS AS
- FDN. FOUNDATION
- F.E. FIELD ENTRANCE
- FRL. FRACTIONAL
- G. GARAGE
- G.M. GAS MARKER
- G.P. GAS PUMPS
- GRAV. GRAVEL
- HSE. HOUSE
- ha HECTARES
- I.P. IRON PIPE OR PIN
- Km KILOMETER
- LT. LEFT
- L LENGTH OF CURVE
- L.C. LONG CHORD OR LAND CONTRACT
- L.C.B. LONG CHORD BEARING
- M.H. MANHOLE
- m METERS
- MON. MONUMENT
- O.L. OUTLOT
- P. PAGE
- P.D. PRIVATE DRIVEWAY
- P.E. PRIVATE ENTRANCE
- P.K. PARKER-KALON
- P.L.E. PERMANENT LIMITED EASEMENT
- P.C. POINT OF CURVATURE
- P.I. POINT OF INTERSECTION
- P.T. POINT OF TANGENCY
- P.L. PROPERTY LINE
- R. RADIUS OR RANGE
- R.R. RAILROAD
- RL. REFERENCE LINE
- R.D.E. RESTRICTED DEVELOPMENT EASEMENT
- RT. RIGHT
- R/W RIGHT OF WAY
- SEC. SECTION
- S. SHED
- m² SQUARE METER
- S.T.H. STATE TRUNK HIGHWAY
- STA. STATION
- T. TANGENT LENGTH OF CURVE OR TOWN
- TAV. TAVERN
- T.L.E. TEMPORARY LIMITED EASEMENT
- USH. UNITED STATES HIGHWAY
- VOL. VOLUME
- X. EAST COORDINATE (GRID)
- Y. NORTH COORDINATE (GRID)
- N. NORTH COORDINATE (GROUND) OR NORTH
- E. EAST COORDINATE (GROUND), EAST OR EXTERNAL
- Δ. CENTRAL ANGLE OR DELTA

- STATE LINE
- COUNTY LINE
- TOWN OR RANGE LINE
- SECTION LINE
- QUARTER LINE
- SIXTEENTH LINE
- PROPOSED OR NEW R/W LINE
- EXISTING R/W LINE
- LOT LINE
- PROPERTY LINE
- NO ACCESS (By Previous Acquisition)
- NO ACCESS (By Acquisition)
- NO ACCESS (By Statutory Authority)
- LIMITED EASEMENT (Temporary or Permanent)
- CORPORATE LIMITS

- SECTION CORNER
- RIGHT OF WAY POINT (NOT MONUMENTED)
- RIGHT OF WAY POINT (MONUMENTED)
- RECOVERED IRON PIN/PIPE
- TRIANGULATION POINT OR HORIZONTAL CONTROL STATION
- INLET
- HYDRANT
- TELEPHONE POLE
- POWER POLE
- RIGHT OF WAY POINT NUMBER
- WATER
- GAS
- TELEPHONE OR TELEGRAPH
- ELECTRIC
- CABLE TELEVISION
- FIBER OPTIC
- SANITARY SEWER
- STORM SEWER
- NOTATION FOR COMBUSTIBLE FLUIDS
- SERVICE PEDESTAL
- SILO, MANHOLE OR WELL, ETC.

- RAILROAD
- BRIDGE
- BUILDING
- FOUNDATION OR RUINS
- FENCE
- MARSH AREA
- LAKE OR POND
- WOODED OR SHRUB AREA
- TREE

R/W PROJECT NUMBER 6675-00-01	SHEET NUMBER 4.1	TOTAL SHEETS 7
FEDERAL PROJECT NUMBER		
PLAT OF RIGHT OF WAY REQUIRED FOR WEST ARTERIAL DAFFODIL LN.- ORIOLE LN.		
WEST ARTERIAL		MARATHON COUNTY



END RELOCATION ORDER
STA. 143+00.00
 Y= 189,919.2389
 X= 272,955.5239
 1091.10 FEET NORTH AND 2085.23 FEET EAST OF THE WEST QUARTER CORNER OF SECTION 10, T28N, R7E

BEGIN RELOCATION ORDER
STA. 90+57.34
 Y= 185,236.4073
 X= 275,311.2978
 962.61 FEET SOUTH AND 934.94 FEET WEST OF THE SOUTHEAST CORNER OF SECTION 10, T28N, R7E

LAYOUT SCALE
 0 0.5 mi
 TOTAL NET LENGTH OF CENTERLINE = 0.993 mi

NOTES:
 COORDINATES AND BEARINGS ON THIS PLAT ARE ORIENTED TO THE WISCONSIN COUNTY COORDINATE SYSTEM, MARATHON COUNTY (ENGLISH) NAD 83, 1991 ADJUSTMENT. ALL DISTANCES ARE GROUND LENGTH.
 RIGHT OF WAY MONUMENTS ARE TYPE II AND ARE PLACED PRIOR TO OR AT THE TIME OF LAND TITLE TRANSFER.
 RIGHT OF WAY BOUNDARIES ARE DEFINED WITH COURSES OF THE PERIMETER OF THE HIGHWAY LANDS REFERENCED TO THE U.S. PUBLIC LAND SURVEY OR OTHER SURVEYS OF PUBLIC RECORD.

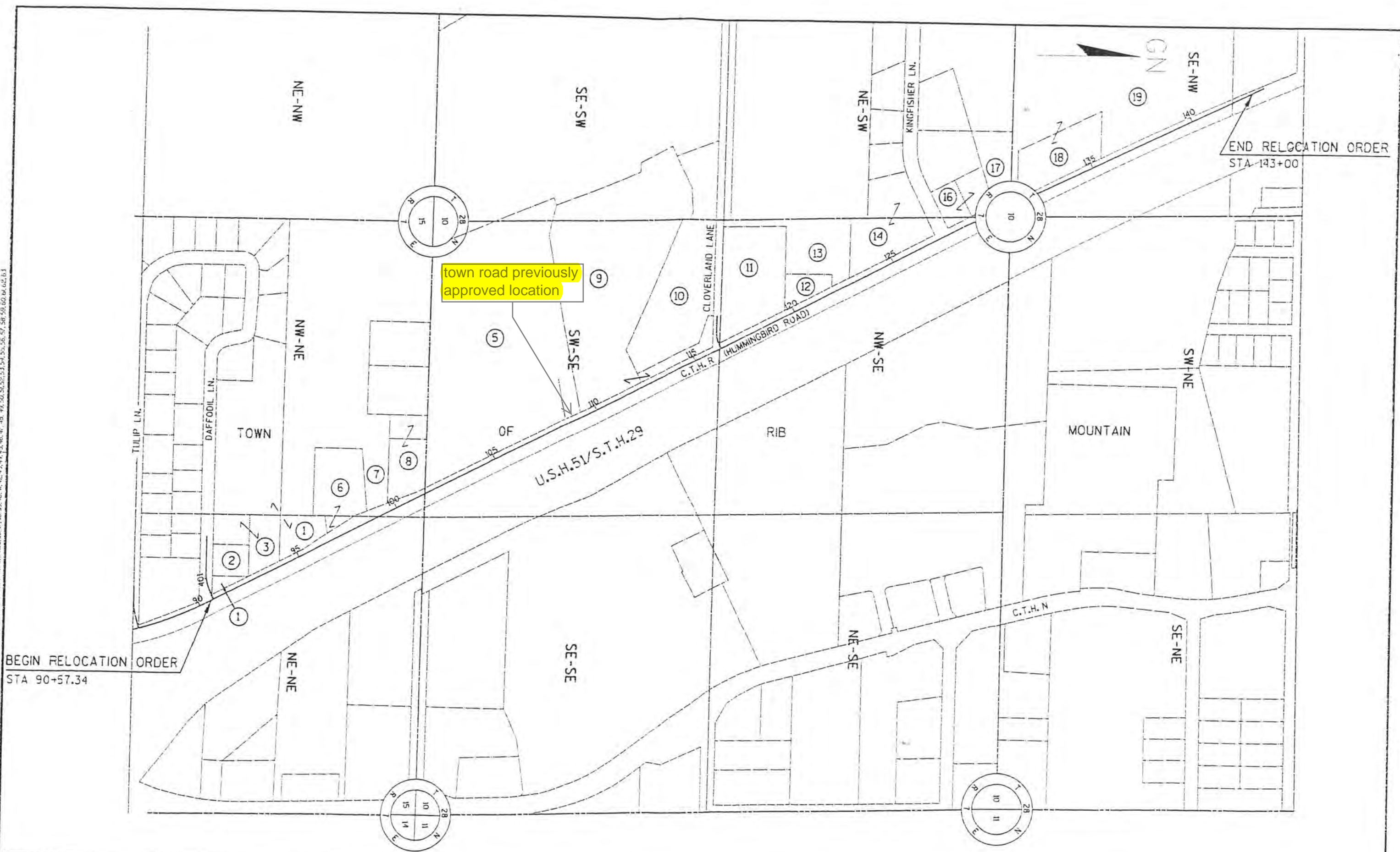
ACCEPTED FOR
 MARATHON COUNTY
 12/12/02
 (Date) (Signature & Title of Official)

ORIGINAL PLANS PREPARED BY
ESEH
 ENGINEERS ARCHITECTS PLANNERS
WISCONSIN
 DUANE A. HOLMAN
 S-1294
 BLOOMER, WIS.
 LAND SURVEYOR
 1-8-2002
 (Date) (Signature)

REVISION DATE
 12-12-2002 N.C.

STATE OF WISCONSIN
 DEPARTMENT OF TRANSPORTATION
 APPROVED FOR DISTRICT OFFICE:
 DATE: _____

LEVELS ON - 1, 2, 3, 4, 5, 6, 7, 8, 9, 10, 11, 12, 13, 14, 15, 16, 17, 18, 19, 20, 21, 22, 23, 24, 25, 26, 27, 28, 29, 30, 31, 32, 33, 34, 35, 36, 37, 38, 39, 40, 41, 42, 43, 44, 45, 46, 47, 48, 49, 50, 51, 52, 53, 54, 55, 56, 57, 58, 59, 60, 61, 62, 63



REVISION DATE 12-12-2002 1-25-2004	DATE 7-3-2002	NOT TO SCALE	HWY: WEST ARTERIAL COUNTY: MARATHON	CONSTRUCTION PROJECT NUMBER STATE R/W PROJECT NUMBER 6675-00-01	PS&E SHEET NO: 4. PLAT SHEET NO: 4.3	E
FILE NAME : s:\trans\marac\0105.00\cad\vh\mqp01.dgn	PLOT DATE: 02/02/2004	PLOT TIME: 09:28:07 AM	DRG DATE :	PLOT NAME :	Originator : Dist	PLOT SCALE : N/A

SCHEDULE OF LANDS & INTERESTS REQUIRED

AREAS SHOWN IN THE TOTAL ACRES COLUMN MAY BE APPROXIMATE AND ARE DERIVED FROM TAX ROLLS OR OTHER AVAILABLE SOURCES AND MAY NOT INCLUDE LANDS OF THE OWNER WHICH ARE NOT CONTIGUOUS TO THE AREA TO BE ACQUIRED.

* = CALCULATED FROM DESIGN FILE

PARCEL NUMBER	SHEET NUMBER	OWNER (S)	INTEREST REQUIRED	TOTAL ACRES	R/W ACRES REQUIRED OR S.F.			TOTAL ACRES REM.	P.L.E. ACRES	T.I. ACRES
					NEW	EXISTING	TOTAL			
1	4.4	RONALD C. WIMMER	FEE, T.I., ACCESS RIGHTS	0.88* AC.	0.37 AC.	-	0.37 AC.	0.51 AC.	-	0.08 AC.
2	4.4	JOHANSSON INVESTMENTS, LLC	FEE	0.48 AC.	0.08 AC.	-	0.08 AC.	0.40 AC.	-	-
3	4.4	EMIL S. JOHNSON & SHIRLEY JOHNSON	FEE, T.I., ACCESS RIGHTS	1.32 AC.	0.15 AC.	-	0.15 AC.	1.17 AC.	-	0.03 AC.
5	4.5	RBMTN LLC	FEE, T.I., ACCESS RIGHTS	14.52 AC.	0.76 AC.	-	0.76 AC.	13.76 AC.	-	0.26 AC.
6	4.4	MARK E. JOHNSON & SARAH M. JOHNSON	FEE, T.I., ACCESS RIGHTS	1.72 AC.	0.09 AC.	-	0.09 AC.	1.63 AC.	-	0.07 AC.
7	4.4	EMIL S. JOHNSON & SHIRLEY A. JOHNSON	FEE, T.I., ACCESS RIGHTS	14.24* AC.	0.06 AC.	-	0.06 AC.	14.18 AC.	-	0.04 AC.
8	4.4	JAY J. SPIEGEL & MARLENE J. SPIEGEL	FEE, T.I., ACCESS RIGHTS	1.42* AC.	0.16 AC.	-	0.16 AC.	1.26 AC.	-	0.07 AC.
9	4.5	RONALD C. WIMMER & JOAN E. WIMMER	FEE, T.I., ACCESS RIGHTS	10.39 AC.	0.77 AC.	-	0.77 AC.	9.62 AC.	-	0.02 AC.
11	4.6	AALL	FEE, T.I., ACCESS RIGHTS	3.00* AC.	0.43 AC.	-	0.43 AC.	2.57 AC.	-	0.16 AC.
12	4.6	RIB MOUNTAIN CONGREGATION OF JEHOVAHS WITNESSES INC	FEE, T.I., ACCESS RIGHTS	0.53* AC.	0.19 AC.	-	0.19 AC.	0.34 AC.	-	0.04 AC.
13	4.6	WAUSAU CONGREGATION OF JEHOVAHS WITNESSES INC	FEE, T.I., ACCESS RIGHTS	1.91 AC.	0.10 AC.	-	0.10 AC.	1.81 AC.	-	0.03 AC.
14	4.6	WESTGATE-SHULTZ, LLC	FEE, P.L.E., T.I., ACCESS RTS.	2.46 AC.	0.33 AC.	-	0.33 AC.	2.13 AC.	0.03 AC.	0.06 AC.
16	4.6	MILTON AVENUE ASSOCIATES	FEE, P.L.E., ACCESS RIGHTS	1.02 AC.	0.12 AC.	-	0.12 AC.	0.90 AC.	0.08 AC.	-
17	4.6	SCHUETTE REAL ESTATE FUND	FEE, T.I., ACCESS RIGHTS	8.73 AC.	0.03 AC.	-	0.03 AC.	8.70 AC.	-	0.03 AC.
18	4.7	GEORGE M. WADINSKI & PAULETTE F. WADZINSKI	FEE, P.L.E., ACCESS RIGHTS	1.84* AC.	0.30 AC.	-	0.30 AC.	1.54 AC.	0.14 AC.	-
19	4.7	GEORGE M. WADINSKI, PAULETTE F. WADZINSKI, DALE T. WARAKSA & WENDY M. WARAKSA	FEE, P.L.E., ACCESS RIGHTS	20.66* AC.	0.46 AC.	-	0.46 AC.	20.20 AC.	0.26 AC.	-
60	4.4	WISCONSIN PUBLIC SERVICE CORP.	RELEASE OF RIGHTS							
11-1	4.6	MOUNTAIN VIEW GROUP	SIGN RIGHTS							
12-1	4.6	RIB MOUNTAIN	SIGN RIGHTS							
14-1	4.6	WESTGATE-SCHULTZ LLC.	SIGN RIGHTS							
E-1	4.5	HARBOR HOUSE	SIGN RIGHTS							

RECOVERED LOT/BLOCK CORNERS AND COORDINATE TABLE

STATION	OFFSET	PT*	Y	X	MON. DESCRIPTION
90+91.83	193.44' LT	1799	185178.4640	275123.5930	1"IP HIT
91+11.61	95.43' LT	1896	185240.9520	275201.6420	1"IP
91+41.76	284.49' LT	1846	185181.1310	275019.7830	1"IP
91+76.89	222.40' LT	1852	185240.8010	275058.8780	IP
91+84.98	367.30' LT	1847	185181.13380	274925.8130	1"IP
92+31.23	458.66' LT	1848	185181.7900	274825.7530	1"IP
92+37.99	340.58' LT	1849	185240.3800	274925.8840	1 1/2"IP
92+57.03	20.78' LT	2021	185404.4130	275201.3740	1"IP
94+13.13	21.55' LT	2060	185542.9030	275129.1310	1"IP
101+55.42	22.48' LT	2438	186202.1890	274788.2810	2"IP
115+99.10	21.42' LT	3046	187485.9400	274127.8150	1"IP
116+71.14	161.35' LT	3072	187485.8670	273970.4340	1"IP W CAP
118+76.93	488.19' LT	3088	187519.0540	273585.6350	1"IP
118+90.79	514.80' LT	3089	187519.1800	273555.6340	1"IP
119+57.99	24.44' LT	3307	187803.5630	273950.7120	1"IP
121+36.11	361.31' LT	3346	187607.5130	273579.1390	1"IP HIT

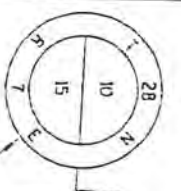
PROPOSED R/W POINT NUMBER AND COORDINATE TABLE

STATION	OFFSET	PT*	Y	X	STATION	OFFSET	PT*	Y	X
90+57.34	122.83' LT	967	185180.8730	275201.7405	123+85.00	60.00' LT	434	188166.8361	273733.4749
90+57.34	59.23' RT	965	185263.1879	275364.1302	124+15.00	100.00' LT	437	188175.1770	273684.1755
91+11.54	95.47' LT	961	185240.8732	275201.6421	124+15.00	60.00' LT	401	188193.5025	273719.7308
91+40.98	80.36' LT	438	185273.9563	275201.5879	126+50.00	60.00' LT	469	188402.3896	273612.0684
91+40.98	152.34' LT	439	185240.9812	275137.6094	129+56.74	65.00' LT	457	188584.8899	273512.3809
91+70.90	65.00' LT	963	185307.5891	275201.5327	130+70.19	50.00' LT	458	188591.5248	273525.8364
101+13.40	57.59' RT	473	186202.15219	274878.7107	130+71.45	45.58' RT	464	188826.1602	273520.9353
101+77.48	65.00' LT	472	186202.15210	274740.3795	130+71.45	46.13' RT	991	188827.5323	273520.8997
110+00.00	56.26' RT	475	186988.9977	274447.1352	130+91.11	54.81' RT	494	188849.0223	273520.3672
110+00.00	65.00' LT	474	186933.4449	274363.5513	131+00.38	54.46' RT	400	188857.2573	273516.1071
112+39.46	55.90' RT	417	187201.6797	274361.1107	131+16.87	50.00' LT	476	188827.6465	273414.5820
112+39.51	21.69' LT	408	187166.1865	274292.3223	131+23.95	65.00' LT	466	188827.6643	273397.9919
112+39.54	64.37' LT	409	187146.4322	274253.9259	136+85.00	65.00' LT	337	189335.1361	273158.8560
112+39.54	65.00' LT	414	187146.3711	274253.9071	136+85.00	100.00' LT	338	189320.2780	273127.1945
115+49.91	64.85' LT	51	187402.2300	274111.8000	137+00.00	43.11' RT	462	189394.8448	273250.2589
115+99.10	21.42' LT	3046	187485.9400	274127.8150	137+15.00	100.00' LT	339	189347.4154	273114.4075
116+41.72	157.93' LT	413	187461.2863	273985.9488	137+15.00	65.00' LT	440	189362.3345	273146.0631
117+06.70	124.42' LT	457	187534.3918	273986.9617	141+75.31	49.57' RT	449	189827.5700	273053.5200
118+00.00	60.00' LT	456	187546.8406	274001.4855	142+21.37	50.00' LT	479	189827.2486	272943.5952
120+00.00	54.75' RT	465	187877.1881	274011.8571	142+28.88	65.00' LT	461	189827.2002	272927.0363
123+85.00	100.00' LT	436	188148.5105	273697.9197					

REVISION DATE 12-12-2002 PENDING	1-26-2004	DATE 7-08-2002	SCALE, FEET NOT TO SCALE	HWY: WEST ARTERIAL	CONSTRUCTION PROJECT NUMBER	PS&E SHEET NO:
FILE NAME : \\s:\trans\marad\0105.00\cadd\shimgp01.dgn	PLOT DATE: 02/02/2004	PLOT TIME: 09:28:09 AM	DRG DATE :	COUNTY: MARATHON	STATE R/W PROJECT NUMBER 6675-00-01	PLAT SHEET NO: 4.2
				Originator : Dist	PLOT SCALE : 1/4"	WISDOT/CADD SHEET 60

LEVELS: 00 - 1, 2, 3, 4, 5, 6, 7, 8, 9, 10, 11, 12, 13, 14, 15, 16, 17, 18, 19, 20, 21, 22, 23, 24, 25, 26, 27, 28, 29, 30, 31, 32, 33, 34, 35, 36, 37, 38, 39, 40, 41, 42, 43, 44, 45, 46, 47, 48, 49, 50, 51, 52, 53, 54, 55, 56, 57, 58, 59, 60, 61, 62, 63

P.I. I.P.
 Y = 186,208.9566
 X = 273,588.8679



town road previously approved location

proposed town road location

EXISTING ACCESS DRIVE TO REMAIN IN USE UNTIL FUTURE TOWN ROAD IS CONSTRUCTED TO THE SOUTH.

CURVE 3
 PI = 5+52.82
 Y = 187,501.4653
 X = 274,089.8053
 Δ = 27°15'20" (LT)
 R = 99.69'
 D = 57°28'18"
 T = 24.17'
 L = 47.42'

NOTE: ACCESS ALONG U.S.H. 51/S.T.H. 29 CONTROLLED UNDER PROJECT T05-3(14)

ROAD NAME	BASIS OF EXISTING R/W	YEAR
CLOVERLAND LN	CSM# 10649, CSM #3-38, CSM# 4166	1999, 1973, 1986
U.S.H. 51/ HUMMINGBIRD LANE	RELOCATION PROJECT * T05-3(14)	1959

*THE WEST R/W LINE OF U.S.H. 51 WAS ESTABLISHED FROM MONUMENTS FOUND ALONG HUMMINGBIRD LANE.

REVISION DATE 12-12-2002 1-26-2004	DATE 7-8-2002	SCALE, FEET 0 50 100	HWY: WEST ARTERIAL	CONSTRUCTION PROJECT NUMBER	PS&E SHEET NO: 4.
GRID FACTOR N/A			COUNTY: MARATHON	STATE R/W PROJECT NUMBER 6675-00-01	PLAT SHEET NO: 4.5
FILE NAME : e:\trans\marco\0105.00\cso\rdhmap02.dgn	PLOT DATE: 02/02/2004	PLOT TIME: 09:27:56 AM	ORG DATE :	PLOT NAME :	Originator : Dist
				PLOT SCALE :	N/A





MARATHON COUNTY INFRASTRUCTURE COMMITTEE MEETING MINUTES

Thursday, July 11, 2019, at 9:00 a.m.

Marathon County Highway Department, 1430 West Street, Wausau, WI 54401

Attendance:	Present	Excused	Absent
John Robinson, Chair	X		
Richard Gumz, Vice-Chair	X		
Tom Seubert		X	
Alan Christensen	X		
Sandi Cihlar		X	
Jeff Johnson	X		
Allen Opall	X		

Also Present: Lance Leonhard, Kevin Lang,

1. **Call Meeting to Order**

The meeting was called to order by Chairman John Robinson at 9:00 a.m.

2. **Public Comment** – No public comment was offered.

3. **Approval of the Minutes of the June 6, 2019 Infrastructure Committee Meeting Minutes**

MOTION BY GUMZ, SECOND BY OPALL, TO APPROVE THE MINUTES OF THE APRIL 18, 2019, INFRASTRUCTURE COMMITTEE MEETING. MOTION CARRIED.

4. **Policy Issues Discussion and Potential Committee Determination** - None

A. 2020 Capital Improvement Request

1. Review Amended 2020 Highway Capital Improvement Request

Discussion:

Commissioner Griesbach explains the amended request made by the Highway Department, indicating that the County Highway M project was originally in the Highway Department Budget and is now being moved to the capital improvement fund, while the second project on County Highway Y is a result of a pilot project with the State of Wisconsin DOT to examine the potential for increasing efficiencies in the application, design, and construction.

Action:

MOTION BY CHRISTENSEN, SECOND BY JOHNSON, TO APPROVE FORWARDING THE AMENDED REQUEST TO CAPITAL IMPROVEMENT COMMITTEE. MOTION CARRIED.

Follow through:

Request to be forwarded to the CIP committee.

B. Policy and Procedure Manual Update

1. Culvert Bridge Aid

Discussion:

Griesbach explains that county culvert/bridge policy calls for all applications to be in prior to October 1, but a significant number of requests are coming in well after the deadline, which causes county staff significant issues. Consensus emerges amongst committee members that reinforcing the existence of this policy and the existence of the emergency policy to town officials is appropriate.

Griesbach also raises the question of whether the committee should remain involved in the approval of the Culvert/Bridge Aid.

Action:

MOTION CHRISTENSEN; SECOND BY GUMZ TO CHANGE EXISTING PRACTICE TO NO LONGER REVIEW FOR APPROVAL STAFF RECOMMENDATIONS RELATIVE TO CULVERT/BRIDGE AIDE. MOTION APPROVED.

Follow through:

Policy and practice manual to be updated.

2. Economic Criteria for Highway Upgrades to All-Season Roads

Discussion:

Griesbach explains that the county has long discussed the specific role of economic development relative to roadway upgrade decision-making. Griesbach indicates that the criteria-based system implemented relative to ATV/UTV roadway usage has been well received and he asks if the committee would support moving forward with a similar "criteria-based" approach relative to roadway upgrades. Consensus emerges that a criteria-based system would be appropriate. Members offer potential criteria, such as:

- gross project cost
- local economic impacts (several potential measures were offered: jobs, living wage jobs)
- beneficiary contract repayment term
- current state of roadway (i.e., where is the roadway in our maintenance schedule, age of roadway, PACER rating)
- maximize general transportation funding
- current and future traffic counts
- length of section roadway section
- location of roadway (e.g., is the roadway within or adjacent to a tax increment financing)
- does the project fit into the long-range transportation/economic development plan

Action:

None taken.

Follow through:

Staff to work on developing next steps relative to criteria.

5. Operational Functions required by Statute, Ordinance, or Resolution: None

6. Educational Presentations and Committee Discussion

A. County Regulation Authority on Wind Farms

Discussion:

Topic will be discussed at a future date due to absence of a committee member who desired to participate in the discussion.

Follow through:

Topic to be placed on a future agenda.

B. Broadband Update, Melinda Osterberg

Discussion:

Melinda Osterberg explains that the county is now under contract with our Broadband Expansion Feasibility Study vendor, Design Nine, meetings are scheduled with local municipalities, business leaders, and other entities for next week (July 15 – 16).

Follow through:

Additional updates at future meetings.

C. Dig Once Policy Update, Melinda Osterberg

Discussion:

Melinda Osterberg explains that the Dig Once policy was discussed at the MPO, specifically the technical advisory committee for future discussion. Chair Robinson explains that the primary goal of the policy would be to increase communication between municipalities and the utility providers.

Follow through:

Metropolitan Planning Organization discussion relative to Dig Once Policy to continue.

D. County Road “K” Wausau to North County Line Public Official Meeting, upcoming

Discussion:

Griesbach explains that the public official meeting will relate to the various potential options relative to the intersection designs for the County A and County K intersection and the County WW and County K intersection. Committee members are welcome to attend the meeting.

Follow through:

Staff to finalize the presentation date and forward information to members.

E. State of Wisconsin Infrastructure Budget Update

Discussion:

Griesbach highlights several aspects of the state budget, including:

- Sustainability – increase in title fees and various other fees
- \$75 million Department of Transportation allocation – an increase from the originally allocated \$35 million
- General Transportation Aids increase
- Reduction in state bonding

Follow through:

None at this time.

F. ATV/UTV Update of Request

Discussion:

Griesbach explains that the department has recently received two applications and utilized the criteria-based system to evaluate the requests. One application was approved and the other was denied.

Follow through:

None at this time.

G. Wisconsin County Highway Association Update

Discussion:

Griesbach updates the committee on the recent work of the County Highway Association, including collaboration with the Department of Transportation on trainings and roadway pilot projects.

Follow through:

None at this time.

H. Highway Commissioner’s Report

Discussion:

Griesbach expounds on the information in his written report, answering questions from the committee.

Follow through:

None at this time.

I. City County Information Technology Commission Report

Discussion:

No written report was offered from the City County Information Technology Commission, so no discussion took place.

Follow through:

None at this time.

7. Announcements:

A. Future meetings and agenda items:

1. August 1st, 2019 Monthly Infrastructure Meeting

8. Adjourn

MOTION TO ADJOURN BY OPALL, SECOND BY JOHNSON, MOTION CARRIED. MEETING ADJOURNED AT 10:53 A.M.

Minutes prepared

By Lance Leonhard on July 11, 2019



DATE: 06/25/2019

TO: Environmental Resources Committee (ERC)

FROM: Dominique Swangstu, Marathon County Zoning Administrator

SUBJECT: Wind & Energy Conversion Systems – Chapter 17 Revisions

In the past few months Marathon County Conservation, Planning and Zoning staff have received many calls about wind & energy systems and what processes and regulations apply. The intent of this memo is to inform the Environmental Resources Committee that revisions will be proposed to Chapter 17 regarding wind & energy systems and state statutes PSC Chapter 128, Chapter 196.378, and Chapter 66.0401 regulating solar and wind energy systems. There has been recent interest by renewable energy companies to host “large scale” systems within the county. These preliminary proposals prompted CPZ staff to revisit Chapter 17 Zoning Code of Ordinances to evaluate how this use and its standards compare to current state statute requirements. Upon review, it was evident some minor revisions would need to be made to update the code to state standards if the county is to appropriately regulate and process a proposed renewable energy (Wind and/or Solar) application. The proposed revisions would provide clarity, consistency, and would primarily apply to *Large Wind and Energy Systems* defined as “A non-residential system having a rated capacity of greater than 100kW (Individual system) or 300kW (Multiple systems) but no greater than a total capacity of 100MW.”

In 2009, new statewide standards for reviewing, processing, siting, and permitting wind & energy systems were put into place with Act 40 (Chapter 66.0401 and Chapter 196.378); this was followed with PSC Chapter 128, Wisconsin State Statutes, in 2010, which regulates the application requirements. These state statutes outline the specific processes, application requirements, and standards that may be regulated by the county or other political subdivision. Through Chapter 66.0401, a political subdivision has specific permit review, processing, and approval requirements set by “commission” standards per Chapter 196.378 which limit local control as it relates to these proposed accessory/utility uses. The Public Service Commission (PSC) regulates what is required to be submitted for an application for *Large Wind Energy Systems* with no provisions for a political subdivision to require information or standards more restrictive than those set by PSC Chapter 128 – Wind Energy Systems.

All Political Subdivisions (Cities, Villages, Towns, and Counties) that choose to adopt an ordinance to implement the standards of Chapter 66.0401, 196.378 and PSC 128 are required to administer the law consistently with few permitted provisions.

Conservation, Planning & Zoning Department



For reference, the process to obtain a permit for a wind energy system is found within the state statute Chapter 66.0401(4) and 196.378, with application requirements in Chapter 128 (Subchapter 3). Per statutes wind and solar energy systems would be permitted in areas **not** designated for residential or commercial development. Other state statutes also apply to these particular uses. For example, within the farmland preservation zoning district, a proposed large energy conversion system would be defined as a utility per Chapter 91.44 and 91.46 of Wisconsin State Statute administered by the Department of Agriculture, Trade, and Consumer protection and the county. These uses have **not** been identified as a permitted or accessory use within the farmland preservation zoning district, as the energy converted/generated would not be used on the parcel (in most cases). If the wind turbine is used for the farm residents or to power farm buildings it could be considered an accessory/private use.

Marathon County will utilize the information and requirements from the statutes in the proposed revisions to Marathon County Zoning Ordinance - Chapter 17. The proposed revisions will meet all state requirements and will identify processes, application requirements, and other standards by reference if possible to eliminate overlapping language and unnecessary repetition. The draft ordinance is not yet complete but a draft will be submitted to the Environmental Resources Committee and County Board for approval in the coming months. Please refer to Chapter 66.0401, 196, and PSC 128 of Wisconsin State Statute for additional information, requirements, and standards for wind and energy systems.

Conservation, Planning & Zoning Department



MARATHON COUNTY

OFFICE OF HIGHWAY COMMISSIONER

1430 WEST STREET
WAUSAU, WI 54401

July 30, 2019

Highway Department Report

Construction Update for Infrastructure Committee

CTH L (STH 97 – Corn Road) – Paving is complete, shouldering is complete, crews are working on driveways and pavement marking should be completed next week.

CTH L (County Line – STH 97) – Federally funded project completed by contractor. Work is substantially completed, contractor has some punch list items to complete.

CTH N (Townline Road project) - Federally funded project completed by contractor. Work is substantially completed, contractor has some punch list items to complete; this project is tied into the City of Wausau's project which will be ongoing through fall.

CTH L (CTH O – CTH K) – Pulverizing begins this week. Asphalt paving is planned for August 19th.

CTH L (5th Lane – STH 107) – Pulverizing and Base repair begins next week. This project will be reduced in scope to the 0.6 miles with failing subgrade due to budget limitations. This will allow us to repair the areas that will likely have severe failures in the winter and spring freeze/thaw cycles. The remainder of the project will be included in the 2020 program.

City of Marshfield box culvert is being installed the week of 7/29.

Town of Berlin Bridge Removal and triple culverts are scheduled for the week of 8/5.

Asphalt Lane Wedging – crews are performing lane wedging on various county highways and some municipalities.

Mowing is complete.

The CTH Q Bridge deck is complete, crews are working on the concrete parapet walls; anticipated completion is by the end of August.

Both Stratford and Wausau crews continue to replace culverts, clear and chip brush and trees from storm debris and repair washed out shoulders.

We have selected AWS from Chippewa Falls to update our 5 scales, cost of \$99,996.75

A request for Statement of Qualifications for a bridge over a branch of the Trappe River on CTH "G" have been sent out.

STP applications for 7 bridges have been sent in for review, 2 county bridges and 5 town bridges. An STP Rural application has also been submitted for CTH C (CTH J - CTH I).

Wisconsin County Highway Association (WCHA) current activities include: WCHA Board of Directors met on July 8th, (Minutes were forwarded to you). The next board meeting will be August 27, 2019.

Submitted by

James M. Griesbach

James Griesbach
Highway Commissioner



Cyber Security Training

Gerry Klein



Agenda

- ❑ At Work
 - ❑ Email Phishing, Spearphishing
 - ❑ Thumb Drives
 - ❑ Web Site risks
 - ❑ Recognizing that you're infected
- ❑ Mobile and Wifi
 - ❑ Public Wifi hotspots
 - ❑ Home Wifi Dos and Don'ts
 - ❑ Password tips
- ❑ Home and Personal Safety
 - ❑ Social Media best practices
 - ❑ Purchasing online
 - ❑ Home banking

Phishing and Spearphishing

- ▶ Watch for Social Engineering by phone – IT will NEVER ask for your password
- ▶ Question the presence of visitors, vendors, contractors
- ▶ When you recognize an email as spam
 - ▶ Don't open – just delete
 - ▶ Recurring junk - Right click – Junk Block Sender
- ▶ Have your Outlook set to NOT preview
- ▶ Hover over a link and look VERY closely. Even the tiniest letter or . out of place is enough. Ex: <http://www.lndsend.com> or www.landsend.al
- ▶ Sometimes the whole email is a hyperlink – arrow changes to hand
- ▶ When in doubt – don't click ANYWHERE




Avoiding Phishing

- 1. Legit companies don't force you to their website
- 2. Legit companies call you by your full name
- 3. Legit companies have domain emails (not gmail)
- 4. Legit companies know how to spell (usually...)
- 5. Legit companies don't send unsolicited attachments
- 6. Legit company links match legitimate URLs

It takes only one untrained employee to be fooled

Sandra P	Help me understand?
Samantha Riccardi	Show Love to Your Employees and to the Earth
Steve Higgins	A secure mobile-cloud architecture is within reach


From: Costco Shipping Agent <manager@cbsbuilding.com>
 Subject: Scheduled Home Delivery Problem
 Date: January 6, 2014 10:54:37 PM MST
 To:
 Reply-To: Costco Shipping Agent <manager@cbsbuilding.com>



Unfortunately the delivery of your order [COS_0077945599](#) was cancelled since the specified address of the recipient was not correct. You are recommended to complete [this form](#) and send it back with your reply to us.

Please do this within the period of one week - if we dont get your timely reply you will be paid your money back less 21% since your order was booked for Christmas.

From: Manager Daniel Bridges <daniel_bridges33@gulfslipformpaving.com>
 Subject: Information
 Date: August 26, 2013 1:25:12 AM MDT
 To: dave
 Reply-To: Manager Daniel Bridges <daniel_bridges33@gulfslipformpaving.com>



Notification

Our courier couldnt make the delivery of parcel to you at 20th August.
 Print label and show it in the nearest post office.

[Print a Shipping Label NOW](#)



Work Habits

- ▶ Don't use unknown thumb drives – we scan
- ▶ Have vendors plug into a monitor instead of using their thumb drive
- ▶ Traveling
 - ▶ Bring a hot spot if possible
 - ▶ If using public wifi – bring up our VPN sw first – before opening a browser
 - ▶ Never login to ANYTHING on a kiosk
- ▶ Social media websites more commonly have viruses
- ▶ Recognize that you're infected – get off our network and contact IT
- ▶ Shutdown daily and make sure you're getting a full scan weekly



Mobile and Wifi

- ❑ Public Wifi hotspots
 - Trust nothing about the location
 - Always use your VPN client
 - Use an app instead of a browser on your phone
- ❑ Home Wifi Dos and Don'ts
 - Do – change the router admin password **AND** wifi password (don't reuse)
 - Do – use WPA2
 - Don't – forget to upgrade your router
 - Do – setup guest wireless if possible
- ❑ Password tips
 - Use unique passwords for sites
 - Use a passphrase if allowed



Home and Personal

- Purchasing products online
 - Don't use a debit card
 - Buy from reputable website
 - Don't save passwords or credit cards
 - Consider using Paypal and tying it to a small savings account (\$100)
 - DO uncheck any box that allows them to send offers
 - If possible, research companies for known problems
 - Look for the HTTPS - padlock
 - Don't buy at a public kiosk



Home and Personal

- ▶ Home Banking and Finances
 - ▶ Don't mail checks from your street-side mailbox
 - ▶ Use your bank's app for banking before using their website on your phone
 - ▶ If offered – use two factor authentication
 - ▶ If offered – get messages about transactions
 - ▶ Use a good password or fingerprint on your phone
 - ▶ On a laptop or home computer – Pay attention to the HTTPS padlock
 - ▶ Like Dale said – use a unique password
 - ▶ Check your banking transactions a couple of times per month
 - ▶ When available – use two factor authentication (or Out of Band)
 - ▶ Back up data – to a cloud solution or a local drive
 - ▶ Use Antivirus software and keep it up to date
 - ▶ IP cameras, appliances, sensors sometimes have vulnerabilities and patches N/A



Social Media Best Practices

- ▶ Only have your profile open to friends
- ▶ Every other month, check settings in Facebook
- ▶ Don't post travel plans
- ▶ Post travel pictures when you return – or have someone stay at your house
- ▶ Only have your profile open to friends ;-)
- ▶ Don't post hateful or inflammatory comments
- ▶ Counsel your millennial children to not post alcohol or inappropriate pics