



MARATHON COUNTY FORESTRY/RECREATION COMMITTEE AGENDA

Date and Time of Meeting: Tuesday, February 2, 2021 at 1:30pm

Meeting Location: Conference Room #5, 212 River Drive, Wausau WI 54403

MEMBERS: Arnold Schlei (Chairman), Rick Seefeldt (Vice-Chairman), Tom Rosenberg

Marathon County Mission Statement: *Marathon County Government serves people by leading, coordinating, and providing county, regional, and statewide initiatives. It directly or in cooperation with other public and private partners provides services and creates opportunities that make Marathon County and the surrounding area a preferred place to live, work, visit, and do business.*

Parks, Recreation and Forestry Department Mission Statement: *Adaptively manage our park and forest lands for natural resource sustainability while providing healthy recreational opportunities and unique experiences making Marathon County the preferred place to live, work, and play.*

The meeting site identified above will be open to the public. However, due to the COVID-19 pandemic and associated public health directives, Marathon County encourages Committee members and the public to attend this meeting remotely. To this end, instead of attendance in person, Committee members and the public may attend this meeting by telephone conference. If Committee members or members of the public cannot attend remotely, Marathon County requests that appropriate safety measures, including adequate social distancing, be utilized by all in-person attendees.

Persons wishing to attend the meeting by phone may call into the telephone conference beginning five (5) minutes prior to the start time indicated above using the following number:

Phone Number: 1-408-418-9388

Access Code: 146 703 5264

If Required, the Password is 1234

Please Note: If you are prompted to provide an "Attendee Identification Number" enter the # sign. No other number is required to participate in the telephone conference.

When you enter the telephone conference, PLEASE PUT YOUR PHONE ON MUTE!

Agenda Items:

- 1. Call to Order**
- 2. Public Comment – Not to Exceed 15 Minutes – Any Person Who Wishes to Address the Committee Must Provide, Name, Address and the Topic to the Chair of the Committee No Later than Five Minutes Before the Start of the Meeting.**
- 3. Approval of the Minutes of the Tuesday, January 5, 2021 Committee Meeting**
- 4. Operational Functions Required by Statute, Ordinance or Resolution:**
 - A. Discussion and Possible Action by Committee
 1. Update on the Cash Farm Lease – Town of Easton
 2. Consider Hiring an Appraiser to Determine Market Values on 80 Acres in the Town of Easton and 40 Acres in the Town of Hewitt for a Potential Land Trade
 - B. Discussion and Possible Action by Committee to Forward to the Environmental Resource Committee for its Consideration
 1. 2020 County Forest Division Annual Report
- 5. Policy Issues for Discussion and Committee Determination for Consideration by Environmental Resources Committee – None**
- 6. Educational Presentations/Outcome Monitoring Reports**
 - A. Forestry Division Expense/Revenue Report

- B. Wisconsin County Forests Association Fact Sheet
- C. Update on Meeting Objective 5.2, Outcome Measure 3 of the 2018-2022 Marathon County Strategic Plan – Park and Forest Land Acquisitions
- D. County Forest Harvest Acreage Totals 2006 - 2020

7. Next Meeting Date, Time, Location: Tuesday, March 2, 2021 at 1:30pm at 212 River Dr., Wausau, WI 54403, Room 5 or via Webex

- A. Announcements/Requests/Correspondence
- B. Future Agenda Items: Closeout Timber Sale, WCFA Spring Meeting, Timber Stumpage Payments to Townships, Great Lakes Timber Professionals Association Magazine Article on County Forest Recreation

8. Adjournment

**SIGNED /s/ Thomas Lovlien
PRESIDING OFFICER OR DESIGNEE**

ANY PERSON PLANNING TO ATTEND THIS MEETING WHO NEEDS SOME TYPE OF SPECIAL ACCOMMODATION IN ORDER TO PARTICIPATE SHOULD CALL THE COUNTY CLERK'S OFFICE AT 261-1500 OR E-MAIL INFOMARATHON@MAIL.CO.MARATHON.WI.US ONE BUSINESS DAY BEFORE THE MEETING.

FAXED TO: Daily Herald and other News Media Groups
 FAXED BY: Jodi Luebbe
 FAX DATE/TIME: January 27, 2021 11:00 a.m.

NOTICE POSTED AT COURTHOUSE:
 By: _____
 Date: _____
 Time: _____ a.m/p.m.

Members present: Tom Rosenberg, Arnie Schlei(c)-(via webex), Rick Seefeldt-(via webex)
Also present: Tom Lovlien-Forest Administrator, Jamie Polley-Director

1. Call Meeting to Order – The meeting was called to order by Chairman Schlei at 1:30pm, Rm. 5, 212 River Dr., Wausau. Official notice and the agenda for the meeting was posted publicly in accordance with State statutes.

2. Public Comment – none brought forward

3. Approve Minutes – **Motion** / second by Rosenberg / Seefeldt to approve the minutes from the December 1, 2020 regular Forestry/Recreation Committee meeting. Motion **carried** by voice vote, vote reflected as 3-0.

4. Operational Functions Required by Statute, Ordinance or Resolution

A. Discussion and Possible Action by Committee

1. Consider Recommendation to Allow Class 1 and 3 Pedal Assist Electric Mountain Bikes (eMTB) on County Forest Lands – Lovlien explained that State legislation has changed their definition of an E-bike so that Class 1 and 3 are no longer considered motor bicycles. Class 2 E-bikes have a throttle and are still classified as a motor bicycle and those are prohibited in parks and forests. The Central Wisconsin Off-Road Cycling Coalition is strongly in support of allowing Class 1 and 3 E-bikes on local trails. Staff doesn't see an issue with them because they don't cause resource damage and are not a safety concern. At their last meeting the Forest Citizen Advisory Subcommittee unanimously approved allowing Class 1 and 3 E-bikes in County forest units while trails are open. **Motion** / second by Schlei / Rosenberg to allow Class 1 and 3 Pedal Assist Electric Mountain Bikes (eMTB) on County Forest lands. Motion **carried** by voice vote, vote reflected as 3-0.

B. Discussion and Possible Action by Committee to Forward to the Environmental Resource Committee for its Consideration

1. Proposed Amendments to Chapter 16 of the Marathon County Code of Ordinances – Lovlien said staff worked with the Recreational Deputies to more clearly define some ordinances in both the parks and forests. Changes include making language more consistent, updating job titles, and adding language that no other motorized vehicles other than ATV or UTV shall be operated on designated ATV/UTV trails on park property or County trails with the exception of authorized personnel in the performance of their duties. Another change that no person shall hike, walk or run on cross-country ski trails when open for cross country skiing in Nine Mile except while hunting is proposed. **Motion** / second Rosenberg / Seefeldt to approve the proposed amendments to Chapter 16 of the Marathon County Code of Ordinances. Motion **carried** by voice vote, vote reflected as 3-0.

5. Policy Issues for Discussion and Committee Determination for Consideration by Environmental Resources Committee – None

6. Educational Presentations/Outcome Monitoring Reports

A. Wisconsin County Forests Association Issue Papers for the 2021-2023 State Budget – Lovlien explained that the Wisconsin County Forest Association has four priorities they are supporting in the next State budget. The first issue is financial support for county and state forestry programs because of COVID-19 and the Verso Mill closure. The second item is for legislative and budget support for Wisconsin forestry programs. Prior to 2017 forestry operations in the State were funded by the forestry mill tax and this was replaced with general purpose revenue. The third issue is the Knowles-Nelson Stewardship grant program for reauthorization which will expire in June 2021. Along with this they are asking for a change to allow nature based recreational development grants for county forest lands. The last issue is for increased acreage share payment. Their group has been trying for a number of years to increase the amount that the townships receive for those that have county forest lands.

B. Cash Farm Lease Town of Easton – The County has an eighty acre property in the Town of Easton which has about twenty-eight acres of farmland. The party that has a cash farm lease on it wants out of the lease. The land has been held onto in case anyone would want to trade land that is adjacent to County Forest land. The Committee has a

couple of options, they could try and trade it, sell it outright, or find a lease. There hasn't been success with trading the land and Lovlien said it is tough to lease the land because of marginal crop lands. Schlei will check into any potential interested parties in leasing the farmland. Lovlien doesn't recommend creating another County forest for that block.

C. Winter Recreational – Program Update – Nine Mile opened December 30th with no tracks set. Currently, only one hill at the Sylvan Tubing hill is open. More snow is needed.

D. Wisconsin Outdoor News Article on County Forests – Lovlien discussed an article from the *Wisconsin Outdoor News* about the history and offerings of the county forest systems and also the duties of the Wisconsin County Forest Association.

7. Next Meeting Date, Time, Location: February 2, 2021, 1:30pm, Rm. 5, 212 River Dr., Wausau WI 54403

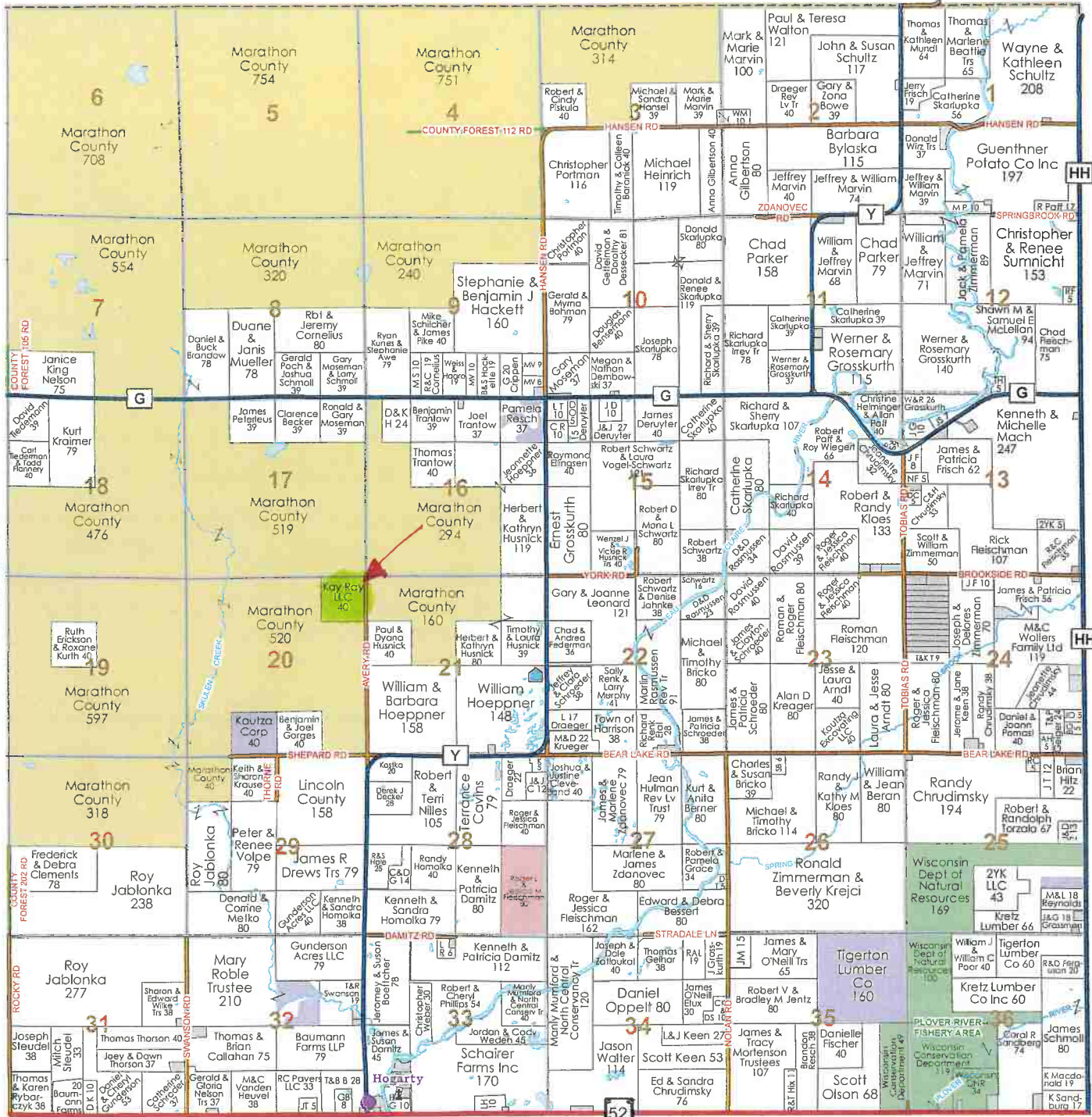
A. Announcements/Requests/Correspondence – none brought forward

B. Future Agenda Items: 2020 County Forest Division Annual Report, Forestry Division Expense/Revenue Report

8. Adjourn – **Motion** / second by Schlei / Rosenberg to adjourn the meeting at 2:15 pm. Motion **carried** by voice vote, vote reflected as 3-0.



SEE PAGE 95



LANGLADE COUNTY

SEE PAGE 81

Need Additional Plat Books?

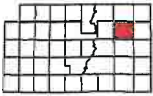
Extension Marathon County Office
212 River Drive, Suite 3 • Wausau, WI 54403
(715) 261-1230



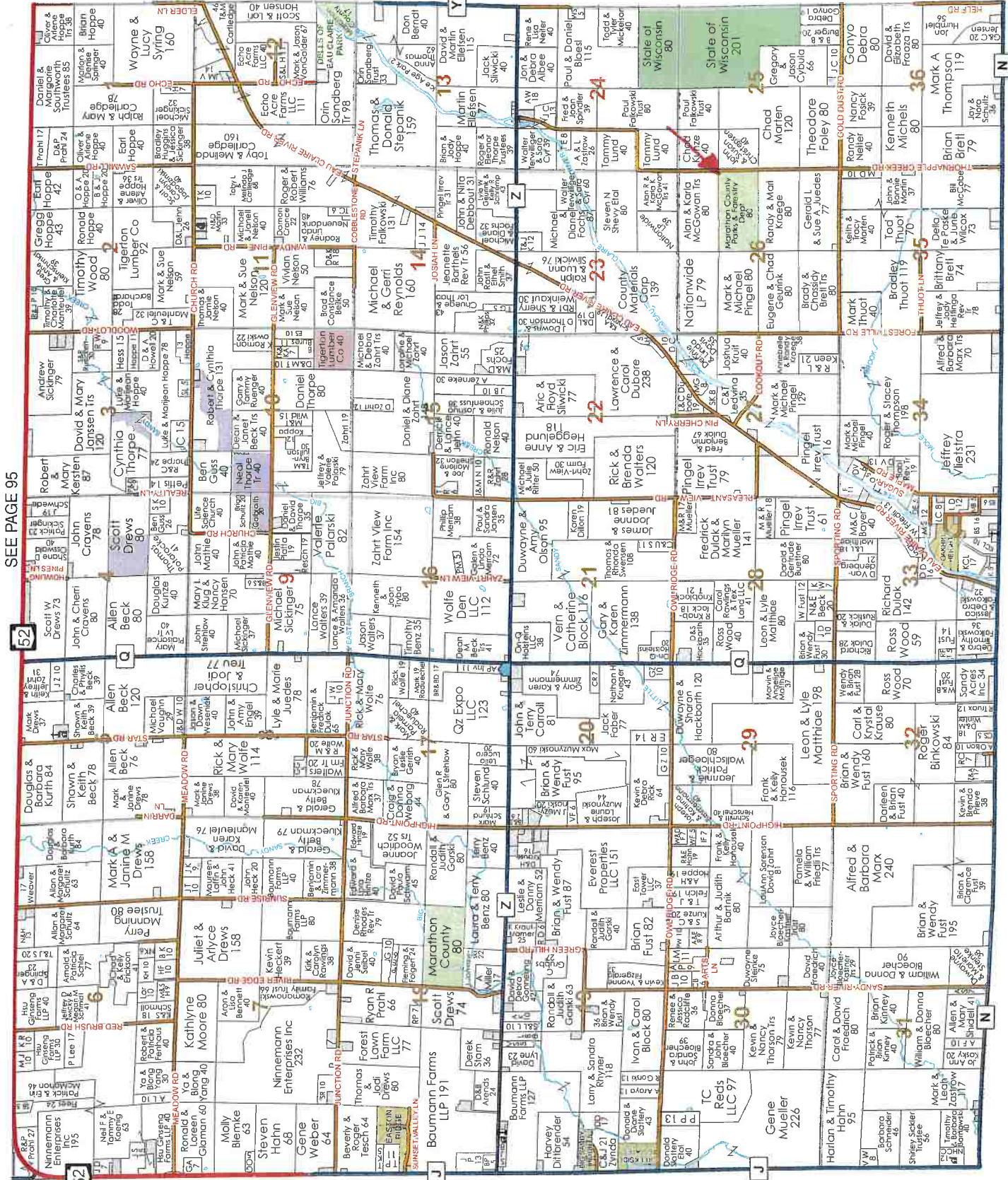
Extension
UNIVERSITY OF WISCONSIN-MADISON
MARATHON COUNTY

Call for additional purchase locations.





SEE PAGE 81



SEE PAGE 95

52

52

SEE PAGE 77

SEE PAGE 61

WHEREAS, Robert Bitzke, deceased, was a public spirited individual who lived in the Township of Easton, and

WHEREAS, Mr. Bitzke also appreciated the care given to his relative for many years by Marathon County and wanted to show his appreciation, and

WHEREAS, Mr. Bitzke donated eighty acres of farm and forested lands together with other assets amounting to \$6,000 to Marathon County, Department of Social Services, to be used for public benefit, and

WHEREAS, the Department of Social Services has met with the Park and Forestry Departments and have determined that the best use for this land is for improvements at the Dells of the Eau Claire County Park and to block in the lands of the County Forests, and

WHEREAS, appropriate acknowledgment and identification of improvements will be made by Marathon County, and

THEREFORE BE IT RESOLVED by the Marathon County Board of Supervisors to accept these recommendations that the following described parcel of land in Marathon County: The South one-half (S½) of the Northeast quarter (NE¼) of Section Twenty - Six (26) Township Twenty - Nine (29) North, Range Nine (9) East, to be used to improve blocking on the County Forest, and

BE IT FURTHER RESOLVED that the twelve thousand (\$12,000) dollars of the Forestry Department funds now deposited in the Sale of Land and Forest Products Account ((26000007) be designated for the purchase of park lands at the Dells of the Eau Claire County Park, and

BE IT FURTHER RESOLVED that any additional accumulated funds from the estate be also deposited in the Sale of Land and Forest Products Account (26000007) to be designated for the same purpose.

Dated: February 26, 1980

DEPARTMENT OF SOCIAL SERVICES

Edward F. Fenhaus

Alfred L. Joswiak

Norman Walters

Art Fenske

Anthony R. Sherfinski

Daniel Bohman

FORESTRY COMMITTEE

Lynn M. Nimz

Jaqueline Turk

Eugene Howe

Bernard Kroening

PARK COMMISSION

Gordon S. Gunderson

Charles Scholfield

Frederick E. Werner

John vonGnechten

F. Marth

Arnold Austin

Stanley Grzadzielewski

Fiscal Impact: Revenue to Marathon County.

Moved by Supervisor Fenhaus, seconded by Supervisor Joswiak to adopt the resolution. Richard Delap, Director of Social Services stated that Mr. Bitzke had willed the property to Marathon County. A roll call vote was taken.

AYES: Anklam, Bohman, Fenhaus, Flynn, Golembiewski, Greiner, Grzadzielewski, Gunderson, Hansen, Heiser, Johnson, Joswiak, Kleinschmidt, Kohlbeck, Kort, Kroening, Kufahl, Loskot, MacDonald, Machmueller, Mayer, McClain, Nimz, Ohlinger, Osswald, Otto, Robinson, Sherfinski, Straub, Turk, vonGnechten, Walkowski, Walters, Werner, Wiley, Zell, Zinkowich

Wausau and Marathon County Parks, Recreation, and Forestry Department **2020 County Forest Division Annual Report**

January 1, 2020 - December 31, 2020

Program Highlights:

- Net timber sale revenue to Marathon County of \$369,888.15.
- Total net revenue for the Forestry Division program was \$433,195.41 and expenses were \$359,928.74. Returned \$73,266.67 to the general fund.
- Purchased 200 acres of land in the Harrison-Hewitt Forest Unit to add to the County Forest.
- Practiced sustainable forestry on 364 acres on the Marathon County Forest. This is based on closed out sales with DNR in 2020.
- Completed a third party Sustainable Forest Initiative(SFI) Certification field audit that showed County Forest management meets or exceeds all standards for the second straight year.
- Received 696 hours of WDNR technical and field assistance in completing work on the Marathon County Forest.
- Continued participation as a member of the Wisconsin County Forests Association Forest Legislative/Certification and other Committees.
- Completed the revision of the 15-year County Forest Comprehensive Land Use Plan 2021-2035 which was adopted by both the County Board and Department of Natural Resources.
- Continued participation in the County Forest Administrator grant program that funds one-half the salary and fringe benefits of the Forest Administrator position.
- Resurfaced 1.55 miles of roads and trails in LeatherCamp and Kronenwetter Forest Units adding 2322 yards of granite.
- The pandemic forced cancellations of many mountain bike, cross country ski, and competitive cross country running and relay races at Nine Mile Forest.
- The closure of the Verso Paper mills in Wisconsin Rapids and Duluth significantly reduced pulp markets, lowered stumpage prices and made it a challenge for timber producers to market their wood.
- Regulated uses at Nine Mile County Forest Recreation Area to allow all user groups to have safe and quality recreation experiences.

Land Holdings:

Acreage in 2020:

County Forest - Regular County Forest Law	30,042.53
County Forest - Special County Forest Law	<u>631.77</u>
Total County Forest	30,674.30

Other Land Holdings:

Parking & road access	8.59
Farm Lease	80.00
McMillan Marsh Lease (DNR)	1,661.40
Under water, island & wetlands	192.74
Railroad ROW/Snowmobile Trail	<u>85.04</u>
Total Other Lands	2,027.77

Total Lands Managed: 32,702.07 Acres

Timber Management, Cultural Projects, and Reforestation:

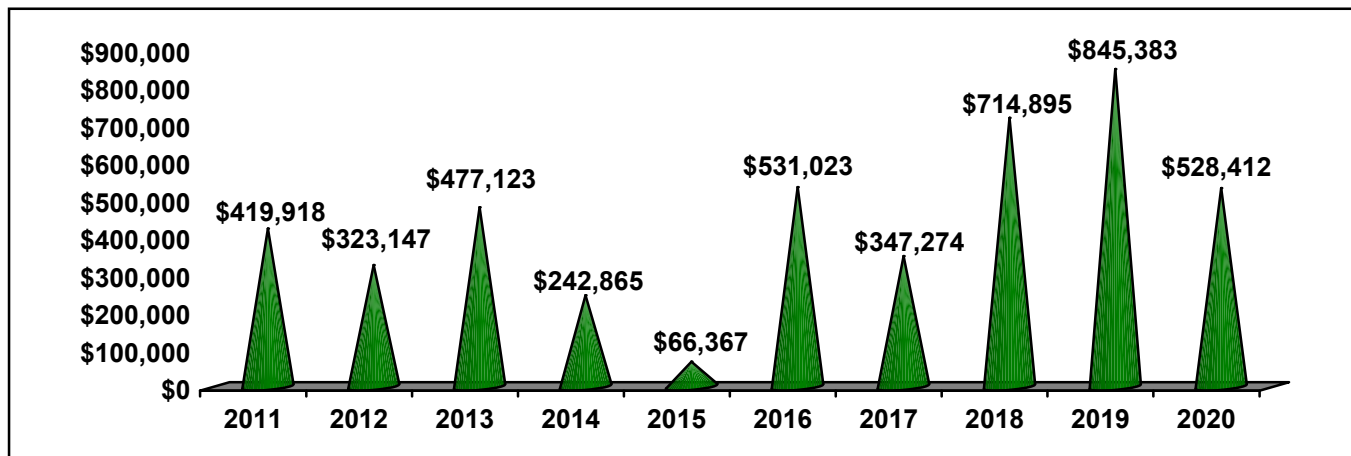
Timber Sales:

Timber sales generated 6496 cords of pulpwood and 108,000 board feet of logs worth \$528,411.64 (unaudited) in 2020. The following is a listing of the gross value of timber cut from the forest over the past 10 years:

2011	\$419,917.34	2016	\$531,022.66
2012	\$323,146.07	2017	\$347,274.04
2013	\$477,122.61	2018	\$714,895.21
2014	\$242,865.33	2019	\$845,383.37
2015	\$66,366.74	2020	\$528,411.64

Marathon County Forest

Timber Sales Annual Gross Revenue – Cut and Hauled

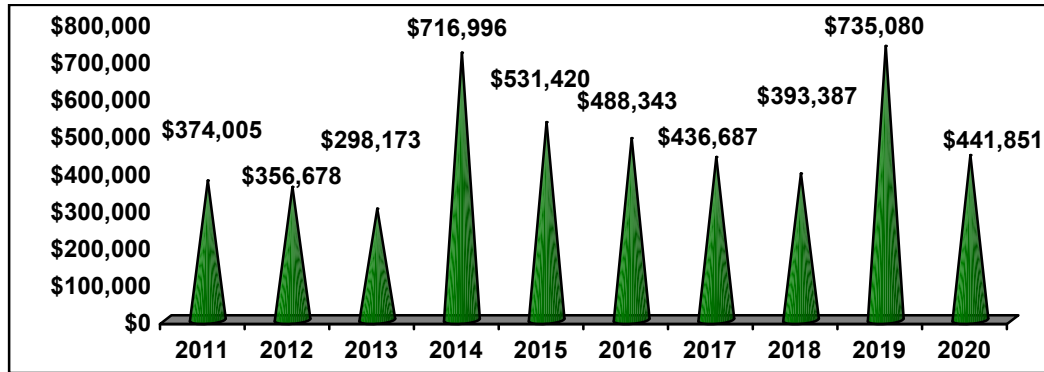


Other Timber Sale Data:

New sales – 10 were established on 662 acres with 13,935 cords appraised at \$462,687.50.

Marathon County Forest

Timber Sales Annual Sold Value



1. Sold sales - 10 of 10 sales advertised were sold in 2020 for a value of \$441,850.75.
2. Uncompleted timber contracts – 30 on 2,024 acres with 34,743 cord equivalents worth \$1,281,276.40.
3. Cut volume reports filed with DNR (form 2460):
 - Final reports – 6 sales worth \$310,827.63.
 - Partial reports - 0 sales worth \$0.
4. Severance paid to DNR on interest free loans \$62,165.53.
5. Severance Tax Escrow for Town payments (10% of gross receipts) \$52,841.16.
6. Firewood permits – 7 permits were issued worth \$210.00.
7. New sale establishment – evaluated 665 acres for potential sale (established 662 acres).
8. Forest reconnaissance – updated 2547 acres.
9. Completed forest inventories at Ashley, Dells of the Eau Claire, Big Rapids and Rib Falls County Parks.
10. Administered a 23 acre timber sale at Mission Lake County Park.

Cultural Projects:

1. Classified forest habitat types on 155 acres for inclusion in our GIS database.
2. Monitored for additional oak wilt areas in Nine Mile and Kronenwetter Forest Units.
3. No new pockets of oak trees were identified in Nine Mile infected with the oak wilt fungus. Monitoring for new pockets will be done in 2021.
4. Utilized remaining funds of a two-year \$31,200 Sustainable Forestry grant to control invasive species and unwanted shrubs on several areas of the forest to promote hardwood and oak regeneration at the Kronenwetter and Leather Camp Forest Units. The grant treated a total of 61 acres.
5. Completed deer browse surveys at Big Eau Pleine County Park. This will continue in 2021 and beyond.
6. Completed deer browse surveys on the Marathon County Forest.

Reforestation:

1. Planted 500 red pine at Nine Mile and Miller Forest Units.

Road, Trail, and Facility Construction and Maintenance:

1. APHIS trapped 28 beaver and removed 26 dams at problem locations in the county forest. Nine dams were blown using dynamite.

2. Replaced 7 culverts at Nine Mile, Leather Camp, and Kronenwetter Forest Units and added granite in problem locations.
3. Brushed approximately 2 miles of roads and trails in the Ringle Forest Unit.
4. Placed 2622 yards of granite, road base and breaker on forest trails in the Burma Road and Elderon Forest Units.
5. Completed repairs to dikes and water control structures from muskrat and beaver damage.
6. Reconstructed several segments of Nine Mile ski trails to improve drainage and level the surface including repairs to several sections due to heavy use and erosion.
7. Performed normal maintenance on 190 miles of forest roads and trails.
8. Graded several sections of the Burma Road ATV trails to prevent erosion.
9. Inspected County Forest boundaries to control encroaching land uses.
10. Created a new parking area at the Kronenwetter Forest Unit.
11. Repaired two rock fords that included ditching to prevent water erosion at Kronenwetter Forest Unit.
12. Repaired gates on roads and trails that access the County Forest.
13. Repaired deer exclusion fences at Big Eau Pleine Park. They are installed to collect data on deer browsing.

Administration:

1. Continued the utilization of the DNR forestry reconnaissance program (WisFIRS).
2. Evaluated two parcels for potential land acquisition as an addition to County Forest land.
3. Applied and received an \$186,152.50 Knowles-Nelson Stewardship grant to help in the purchase 200 acres of land to add to the Harrison-Hewitt Forest Unit.
4. Revised the Event and Use Regulations policy for Nine Mile County Forest to minimize user conflicts and balance the competing uses.
5. Developed policy and implemented principals of Forest Certification - Sustainable Forestry Initiative (SFI) on the Marathon County Forest.
6. Completed the revision of the County Forest Comprehensive Land Use Plan 2021-2035 to reflect forest certification, language and policy changes.
7. Located and assisted in the purchase of approximately 100 cords of firewood for campers for use at the County Park campgrounds.
8. Our Recreational Safety Deputies confiscated four illegal tree stands. They monitored sites where illegal tree stands/trail cameras were placed on County Forest Land. They investigated complaints of vehicle, vandalism, illegal dumping and criminal activities issuing four ordinance violations and numerous warnings. At Nine Mile Forest Unit, Deputies conducted patrols checking for cross country ski and mountain bike passes issuing multiple warnings. Completed regular patrols at nearly every forest unit and assisted in locating three lost hiker/hunters.
9. Issued four ATV/UTV disabled person access permits to people with disabilities for County Forest access.
10. Revisions were drafted to Chapter 16 of the County Forest Ordinances and were adopted by County Board in early 2021.
11. Held quarterly meetings with the Forest Citizen's Advisory Subcommittee to discuss forestry and recreation issues.

Wildlife and Fisheries Management:

In cooperation with the Wisconsin Department of Natural Resources:

1. Maintained 17 flowages.

2. Mowed forest openings, Nine Mile and Harrison-Hewitt Forest Unit flowage dikes and the Bitzke Bird Walk trail.
3. Several beaver were trapped by APHIS that were causing damage at waterfowl flowages.
4. Mowed most forest unit trails suitable for mowing.
5. Treated 13 out of 72 forest openings in the forest units by either mowing or applying herbicides. Several other openings were field checked and didn't require treatment.
6. Poor winter conditions prevented shearing of tag alder in the Leather Camp Forest Unit to create habitat for grouse, woodcock and other early successional species. Shearing will continue in 2021.
7. Seeded 1 mile of trails with a wildlife mixture in Harrison-Hewitt, Ringle and Leather Camp Forest Units.
8. Removed cattails in front of the water control structure at Bern Forest Unit utilizing Federal Emergency Management Agency (FEMA) funding. Removal of additional cattail masses will continue in 2021 and beyond.
9. Seeded 109 lbs. of wild rice in flowages at the Harrison-Hewitt Forest Unit.
10. Testified in favor of additional antlerless tags to the County Deer Advisory Council (CDAC) in an attempt to reduce the deer population in areas of County Forests with tree regeneration problems.

Recreation:

Nine Mile County Forest Cross Country Ski Trails:

The ski season opened on December 16, 2019 and the chalet closed for the season on March 15, 2020.

The Wausau Nordic Ski Club offered free adult ski lessons on Tuesday evenings in January. The County assisted by allowing free ski rental and free ski passes for those taking lessons. This partnership was developed to help promote the ski area and increase the interest in cross country skiing.

The Snekkevik ski race had 380 participants and \$1072.00 in revenue. The Badger State Games had 411 participants and \$2652.75 in revenue. Special Olympics was held and netted \$729.92 in revenue. Stomp the Swamp Snowshoe race was again held in February with \$621.76 in revenue. The first ever IronBull winter triathlon event had 46 participants and \$390.50 in revenue. Total annual receipts associated with skiing and snowshoe activity was \$61,673.29.

Ski Trail Maintenance at Nine Mile Forest Unit:

1. Brushing of all trails is ongoing, and the efforts of the volunteers are greatly appreciated.
2. Volunteers from the Nordic Ski Club sponsored work days in October. They performed tasks such as rock picking, lifting trees and brushing trails.
3. Trail signs were inspected and damaged trail signs replaced, some new signage added, this work will continue in 2021 as the signage is evaluated and updated.

Mountain Biking at Nine Mile Forest Unit:

The 2020 mountain bike season opened at noon on May 1. The bike trails closed as scheduled on October 15. There were two Mountain Bike events held at Nine Mile in 2020; The Wisconsin Endurance Mountain Bike Series, and the IronBull Granite Grinder. A total of 1809 daily passes and 598 annual passes were sold in 2020. Total receipts associated with mountain biking in 2020 totaled \$23,456.21. Central Wisconsin Off-Road Cycling Coalition, (CWOCC) continues to be a great partner in maintaining the trail system. CWOCC fund raised and completed phase I of the Nine Mile Forest single track improvement project. Phase II is scheduled for the summer of 2021. Volunteers donate many hours of their time to maintain the single track trails.

Other Recreation:

1. Three cross country running races were held at Nine Mile in 2020.
2. Three ATV safety classes were held in the north parking lot at Nine Mile Forest Unit in 2020.

3. Issued twenty-six undesignated camping permits for county forests in 2020 resulting in \$390 in revenue.
4. The number of people using all County Forest Units continues to increase. Activities such as hiking, dog walking, berry picking and horseback riding are growing and the demand for more trails is increasing.

Recreational GIS Mapping:

1. Completed 80 mowing route maps for Athletic fields and County and City Parks.
2. Completed 37 snow plow route maps for County and City Parks.
3. Completed a Rib Mountain master plan connector map.
4. Completed a fairground map.
5. Completed a Sylvan Hill Park COVID entry/exit map.
6. Created 17 acquisition maps for the County Forest Comprehensive Land Use plan.
7. Completed a Nine Mile Forest Unit mountain bike harvest map.
8. Created 5 Elderon Forest Unit private access maps.
9. Created numerous maps for the SFI certification audit.
10. Completed an update of the Sylvan Hill cross country ski map.
11. Created new maps for the County website including Trappe River Dells, Brokaw and 45N-90W Geographical Marker parks.

Snowmobile Trails:

1. Trails were open 52 days during the 2019-20 season. Looking back 28 years, the seasonal average has been 46 days.
2. Six local snowmobile clubs contract with Marathon County to groom, sign, brush and perform other work related to maintaining the trail system on County Forest property.
3. Clubs are responsible for signing the trails to DNR specifications.
4. The Parks, Recreation and Forestry Department annually update the snowmobile trail map for the Snowmobile Council to print. This year a new map was printed. In the future, a new map will be printed each year, if circumstances allow.
5. Printed trail maps are made available at numerous locations throughout Marathon County.
6. Marathon County snowmobile clubs continue to receive financial assistance for trail maintenance from the Snowmobile and ATV Aids Programs through grants administered by the Parks, Recreation and Forestry Department and disbursed by the DNR.
7. The snow and trail conditions hotline has been re-established. A recording is now available as an option on the Parks, Recreation and Forestry Department phone tree. This was due to numerous requests by the public and local businesses. The message will be updated by the Motorized Recreation Coordinator to keep the public up to date on conditions and any trail closures.
8. Current trail conditions are also updated by the Parks, Recreation and Forestry Department on the Marathon County website, on Facebook and the Travel Wisconsin website.
9. The Snowmobile Automated Reporting System (SNARS) became mandatory for all snowmobile clubs statewide with the 2017-2018 season. SNARS is a computer program that was developed to improve the accurate and timely reporting of County trail maintenance expenses and other data to the DNR.
10. A new Global Positioning System (GPS) is being phased into the snowmobile program as requested by DNR. Some clubs have chosen to participate voluntarily to learn the system prior to it being mandatory. The system is being implemented for greater accuracy of trail mileage and to track trail grooming.

Burma Forest ATV/UTV Trails:

1. Summer trails were maintained using \$11,274.00 of State ATV/UTV trail maintenance funds. More work will be completed this summer in the Burma Forest Unit than was done the past season.
2. The Mid-Wisconsin Trailblazers ATV Club, through a contract with Marathon County, was

responsible for the routine maintenance of 11 miles of summer ATV/UTV trails.

3. Volunteers from the Mid-Wisconsin Trailblazers ATV Club continued their trail patrol to encourage safe and ethical riding. Patrol members talked to other riders about the importance of staying on the trail.

Public Outreach/Professional Development: (Pandemic caused many cancellations in 2020)

1. Forest Administrator served as a member of the Wisconsin County Forests Association Legislative/Certification, Personnel, DNR Budget, Dues and Bylaws and Roads Committees.
2. Attended several virtual Society of American Foresters, Wisconsin County Forests Association and Forest Certification training sessions.
3. County Forester attended a virtual training on managing for irregular shelterwoods.
4. Analyzed plant samples for insect and disease problems.
5. Interviewed by media on forestry related issues.
6. Created interpretive displays to educate the public about the benefits of sustainable forest management.

Budget Summaries (available upon request)

Forest Resources:

County Forest Program
 County Forest Administrator
 County Forest Road Aids
 County Conservation Aids
 FEMA Cattail Removal
 Sustainable Forestry
 Segregated Land
 Wildlife Habitat
 Forestry State Aid
 Knowles-Nelson Stewardship

Debt Redemption:

General Debt - Aid to County Forest

Recreation:

Burma Trail ATV 19-20
 Cross-Country Ski Trails
 General Fund - Snowmobile Coordinator
 Snowmobile Grant 19-20

2011-2020 FORESTRY DIVISION EXPENSE/REVENUE REPORT

Year	Gross Timber Sold Amount	Net Timber Sold Amount	Acres	Timber Revenue Even-Flow Budget	Net Timber Revenue Actual ¹	Other Revenue ²	Total Revenue	Expenses ³	Program Net
2011	\$374,005	\$261,804	551	\$213,000	\$293,943	\$60,870	\$354,813	\$357,721	(\$2,908)
2012	\$356,678	\$249,675	548	\$213,000	\$226,203	\$57,170	\$283,373	\$346,272	(\$62,899)
2013	\$298,173	\$208,721	543	\$213,000	\$333,986	\$53,239	\$387,225	\$308,336	\$78,889
2014	\$716,996	\$501,897	578	\$213,000	\$170,006	\$98,093	\$268,099	\$342,956	(\$74,857)
2015	\$531,420	\$371,994	596	\$245,000	\$46,457	\$57,908	\$104,365	\$345,387	(\$241,022)
2016	\$488,343	\$341,840	666	\$245,000	\$371,716	\$58,385	\$430,101	\$341,930	\$88,171
2017	\$436,687	\$305,681	520	\$245,000	\$243,092	\$60,606	\$303,698	\$343,106	(\$39,408)
2018	\$393,387	\$275,371	709	\$245,000	\$500,427	\$58,068	\$558,495	\$359,452	\$199,043
2019	\$735,080	\$514,556	644	\$245,000	\$591,768	\$59,779	\$651,547	\$354,742	\$296,805
2020	\$441,851	\$309,296	662	\$245,000	\$369,888	\$63,308	\$433,196	\$359,929	\$73,267
TOTALS	\$4,772,620	\$3,340,835	6017	\$2,322,000	\$3,147,486	\$627,426	\$3,774,912	\$3,459,831	\$315,081

¹ Revenue to Marathon County after 20% payment to State for loans and 10% payment to townships

² Includes County Forest Administrator grant, firewood permits, camping fees, bond recovery and misc. revenues

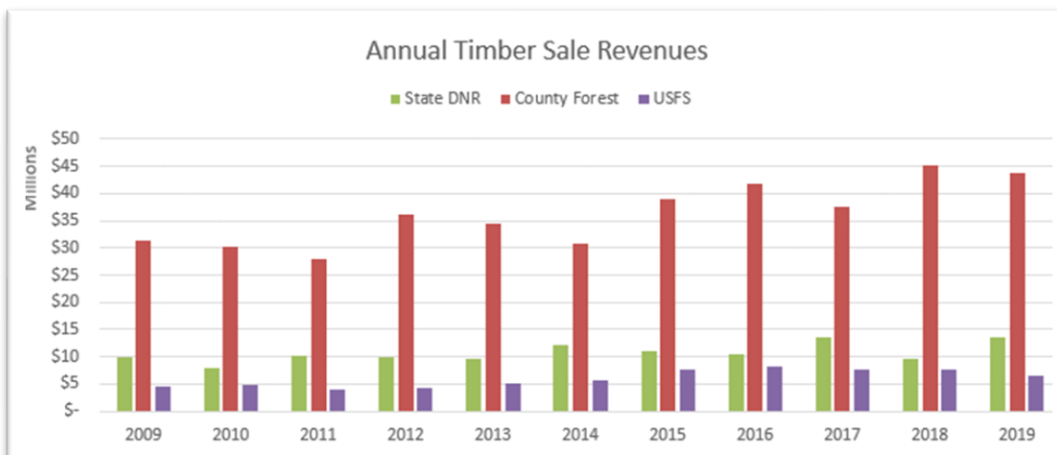
³ Includes all personnel and operating expenses

Wisconsin County Forest System

The State legislature, in incredible foresight, created the Forest Crop Law in 1927 (precursor to the County Forest Law §28.11), allowing counties, and many others, to enroll acres left tax delinquent after massive logging operations and failed attempts of conversion to farmland swept through the northern ½ of Wisconsin in the early 1900's.

The number of forested acres has increased, on average, nearly 10% across all 30 member counties since 1983, contributing to the 2 million acre increase statewide over the last 50 years. Harvest levels on member county forests over the past decade have averaged over 18 million board feet and 770,000 cords per year. **Stumpage revenue in FY20 returned roughly \$35 million back to the counties and towns.**

In many counties, timber sale revenue significantly contributes to county coffers, not only funding their forestry programs, but to also supplement other departments, projects and budgets, as well as offset tax levies. Additionally, harvest revenue provides funding for the vast amount of outdoor recreational amenities enjoyed by the citizens and visitors of Wisconsin. In short, **County Forests are vital to the State's economic health**, as well as providing for healthy forests, robust wildlife habitat and clean water.



Wisconsin County Forest Law § 28.11:

*“The purpose of this section is to **provide the basis for a permanent program of county forests** and to enable and encourage the planned development and management of the county forests for **optimum production of forest products** together with recreational opportunities, wildlife, watershed protection and stabilization of stream flow, giving **full recognition to the concept of multiple-use** to assure **maximum public benefits**; to protect the public rights, interests and investments in such lands; and to **compensate the counties for the public uses, benefits and privileges** these lands provide; all in a manner which will **provide a reasonable revenue to the towns** in which such lands lie.” (§28.11 is the foundation for county forest existence & management)*

FAST FACTS

- 1st County Forest established in 1928 in Langlade.
- Currently there are 30 established County Forest Programs.
- Jointly are the largest public landholder in WI.
- Collectively they manage over 2.4M acres, roughly 14% of WI's forested acres.
- Forestry is the #1 employer in 10 Counties
- Forestry is #1 in output in 14 Counties

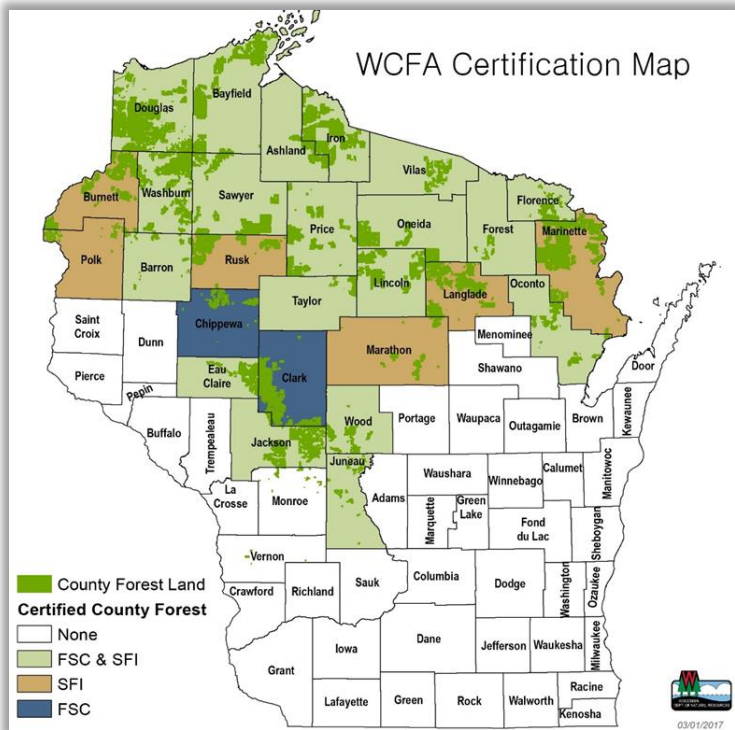
In 2019 & 2020, the Forest Certification audit found the Wisconsin County Forest System exceeds best management standards. The System has been previously described as “the model” for public land management in the US.

Did you know?

Wisconsin is the #1 producer of paper and wood manufacturing in the US. Forest products is the 2nd largest industry in the State, supporting more than 64,000 jobs and contributing over \$24 billion annually to the economy.



Below: Displays County Forest acres along with which counties hold forest certification (27). Forest certification stamps tell consumers they are buying wood products which are sustainability harvested.



Wisconsin's County Forest System also boasts a tremendous amount of outdoor recreational opportunities for the citizens and visitors of Wisconsin, no matter the type or skill level.



Motorized

- Nearly 1,800 miles of ATV trails
- Over 9,000 miles of snowmobile trails
- Nearly 300 constructed boat landings

Non-Motorized

- The Ice Age National Scenic Trail crosses 9 county forests
- Over 1,800 miles of hiking, snowshoe, cross-country skiing, horse and bicycle trails
- Over 3,300 campsites
- Nearly 200 day use areas with 54 public beaches

Tourism, largely due to outdoor recreation, is the #1 industry in 8 of the 30 member counties, and top 5 in 27 of the 30 member counties.



Wisconsin County Forests Association

The Wisconsin County Forests Association (WCFA) was established in 1968 to provide a collaborative forum to discuss, consider and address matters, challenges and policies of the county forests. WCFA works with and represents interests of County Forestry Committees responsible for the forestry programs in each of its 30 member counties.

Who is WCFA?

- Not for Profit / Member and grant funded
- Quasi – Government Organization
- Steered by a Board of Directors & several Committees
- Directed by a strategic plan and professional staff

Our Mission:

The Wisconsin County Forests Association provides leadership uniting the interests of the world's largest county forest program while ensuring long-term forest health and sustainability.



For more information on County Forests or WCFA, please contact:

Rebekah Luedtke, Executive Director
715.539.1097
info@wisconsincountyforests.com
www.wisconsincountyforests.com
Follow us on Facebook too!

Objective 5.2: Promote sound land use decisions that conserve and preserve natural resources in decisions with economic development and growth.

Park and Forest Land Acquisitions 2018 – 2020

1. Acquired 3.99 acres of land to add to the Eau Claire Dells Park in 2018.
2. Acquired 40 acres of land to add to the Harrison-Hewitt Forest Unit in 2018.
3. Acquired 199.84 acres of land to add to the Harrison-Hewitt Forest Unit in 2019.
4. Accepted a donation of 79.67 acres in the Town of Easton and created a new forest named the Miller Forest Unit in 2019.
5. Acquired 200 acres of land to add to the Harrison-Hewitt Forest Unit.
6. Currently working on one additional land trade for 2021 of 40 acres to add to the County forest.

Parkland Acquisition - 3.99 Acres (Goal 360 Acres)

County Forest Land Acquisition - 519.51 Acres (Goal 600 Acres)

Strategy A

Update existing land use policies to address sprawl and natural resource protection.

Strategy B

Promote infrastructure development that protects natural resources.

Strategy C

Identify and preserve unique regional areas for natural resource protection and environmental remediation.

Strategy D

Develop a Land Capability Index.

Strategy E

Develop a comprehensive approach to redevelopment and revitalization of older housing stock and older buildings.

Strategy F

Acquire land for public park and forest use to retain natural landscapes and resources.



OBJECTIVE 5.2: Promote sound land use decisions that conserve and preserve natural resources in decisions with economic development and growth.

By December 31, 2022, phosphorous from cropland and farmsteads in the Fenwood Creek Watershed will be reduced by 20% or 14,016 pounds.

Baseline: 70,080 pounds in 2018
Source: Nine Element Plan (EPA*)

Outcome Measure 1

By December 31, 2022, four or more additional towns will adopt Marathon County Zoning Code.

Baseline: 18 of 40 towns, 2018
Source: Marathon County Conservation, Planning & Zoning

Outcome Measure 2

By December 31, 2022, an average of 320 acres of land per year will be acquired for the Marathon County Parks and Forests System.

Baseline: 4,273.91 Park acres and 30,194.79 Forest acres, 2018
Source: Marathon County Parks, Recreation and Forestry

Outcome Measure 3

Departments Contributing

- Central WI Airport
- Highway
- Conservation, Planning & Zoning
- Corporation Counsel
- Parks, Recreation and Forestry
- Solid Waste
- UW-Extension

* Environmental Protection Agency

COUNTY FOREST HARVEST ACREAGE CY1996-2020

(Based on closed out timber sales)

COUNTY	1996	1997	1998	1999	2000	2001	2002	2003	2004	2005	2006	2007	2008	2009	2010	2011	2012	2013	2014	2015	2016	2017	2018	2019	2020	AVE.
Adams																										0
Ashland	1331	479	674	632	560	647	739	595	861	1112	1514	804	1458	1327	461	1562	1163	624	1360	1305	544	1485	0	2165	947	974
Barron	896	419	205	518	366	0	741	0	285	0	0	793	710	645	684	69	0	842	1039	48	243	0	944	706	471	425
Bayfield	1940	2110	615	1089	4876	1579	3432	3507	2618	1768	3282	1957	2428	4379	4753	3637	3176	2912	5219	4766	2892	4092	4247	2617	4539	3,137
Burnett	1637	1653	1796	1502	1824	1792	2296	2193	1492	2378	1799	673	3941	2726	2879	2332	5040	3416	4045	2734	1837	2075	2023	245	1018	2,214
Chippewa	625	515	228	547	384	994	413	859	857	721	169	1094	388	158	662	814	262	1023	738	497	563	622	840	331	302	584
Clark	4704	3556	3211	5926	6077	4783	2778	4153	2412	1943	2317	2196	3632	3032	2505	2908	4025	4728	2768	2796	2585	1788	3764	3708	1179	3,339
Douglas	4438	4070	2573	3365	3757	3802	2827	2980	4659	3903	3323	3043	4224	4093	4984	4158	6546	3577	4562	5519	3046	4897	4697	5271	4141	4,098
Eau Claire	1665	1774	1491	1468	1324	1461	1266	902	1157	1078	646	984	622	898	546	1285	853	609	553	1000	681	168	332	828	0	944
Florence	782	814	530	243	829	300	177	1026	471	1807	0	738	628	1203	782	211	2490	954	1033	1358	534	610	857	563	982	797
Forest	0	0	718	284	72	823	412	88	378	389	141	499	205	408	382	139	554	56	506	0	343	210	132	333	46	285
Iron	3018	4228	2593	2274	3016	1774	1003	3589	1355	1585	3145	2271	2596	2350	4414	2955	2969	3792	3739	3283	3949	4335	6404	1357	3540	3,021
Jackson	2089	1547	592	1341	2457	1426	1649	2961	3312	2242	1272	2299	1900	2295	1461	1632	1527	1512	2452	1840	929	1873	695	1737	519	1,742
Juneau	509	0	812	402	384	308	443	358	212	393	234	572	403	1252	336	0	303	465	214	501	376	597	0	650	0	389
Langlade	4285	4291	2117	5335	3305	3601	2710	3847	4812	3840	4263	3824	2821	4205	4302	3920	3688	4321	3040	2696	2954	1643	2264	4161	5070	3,653
Lincoln	1627	2881	2068	1966	2437	1700	3158	2687	2433	1900	2220	1840	2103	2040	1556	2635	1809	1420	1653	1209	2785	1189	3328	1560	1768	2,079
Marathon	330	732	76	617	725	856	802	485	309	548	902	1340	751	580	441	917	445	521	665	115	121	505	774	902	364	593
Marinette	3209	3598	3071	3760	2407	3605	4260	3782	3405	3518	4533	2611	3363	3976	3914	4654	3308	3138	3706	3938	1912	3134	1674	3847	4789	3,484
Monroe	0	0	98	196	59	160	0	0	36	69	23	195	81	297	62	64	0	267	199	231	66	131	152	167	103	106
Oconto	818	975	633	661	465	474	894	1416	1031	371	755	141	964	399	797	823	770	758	809	591	1137	733	904	675	602	744
Oneida	791	927	1570	1229	750	667	732	609	761	743	1306	1374	1434	1399	1253	2889	1700	1801	1603	1311	1743	1240	2659	1300	1211	1,320
Polk	449	196	369	323	455	305	238	914	937	612	331	615	884	176	65	369	894	512	683	414	346	265	652	536	13	462
Price	1160	654	826	1909	115	2913	826	1364	1616	1441	1735	2185	2254	999	2051	1373	2096	2151	974	2313	1999	726	2041	1455	1529	1,548
Rusk	1117	2100	2895	2623	1403	1072	3443	3394	3353	4149	2256	3062	3764	1177	1960	3292	5312	2934	1517	1909	1853	3679	3301	1859	1265	2,588
Sawyer	2552	1915	1865	1228	1426	2083	1909	2466	2113	3058	2153	4194	3228	2909	2678	3406	2841	2701	2629	3396	1898	1535	2254	2820	1539	2,432
Taylor	438	503	1073	739	375	565	639	711	243	374	554	707	465	358	122	372	1094	263	387	376	432	357	678	536	266	505
Vernon	0	0	0	0	0	0	0	0	0	0	0	0	21	40	0	65	44	3	0	0	0	0	59	0	37	11
Vilas	389	1922	618	795	693	728	306	618	411	494	396	883	710	792	554	123	870	1236	484	355	760	700	398	687	912	673
Washburn	2018	1880	2123	2334	1794	1454	1983	2057	3185	2549	1977	2957	3185	3011	3512	2398	5051	3172	2477	1529	3547	2288	1246	3248	2196	2,527
Wood	1153	672	948	415	0	843	1159	664	229	1815	509	348	1075	641	692	191	794	1263	509	864	541	0	732	367	376	672
TOTAL	43,970	44,411	36,388	43,721	42,335	40,715	41,235	48,225	44,943	44,800	41,755	44,199	50,238	47,765	48,808	49,193	59,624	50,971	49,563	46,894	40,616	40,877	48,051	44,631	39,724	45,346

KB 1/12/21

From DNR timber sale report #36A