



MARATHON COUNTY FORESTRY/RECREATION COMMITTEE AGENDA

Date and Time of Meeting: Tuesday, December 1, 2020 at 1:30pm

Meeting Location: Conference Room #5, 212 River Drive, Wausau WI 54403

MEMBERS: Arnold Schlei (Chairman), Rick Seefeldt (Vice-Chairman), Tom Rosenberg

Marathon County Mission Statement: *Marathon County Government serves people by leading, coordinating, and providing county, regional, and statewide initiatives. It directly or in cooperation with other public and private partners provides services and creates opportunities that make Marathon County and the surrounding area a preferred place to live, work, visit, and do business.*

Parks, Recreation and Forestry Department Mission Statement: *Adaptively manage our park and forest lands for natural resource sustainability while providing healthy recreational opportunities and unique experiences making Marathon County the preferred place to live, work, and play.*

The meeting site identified above will be open to the public. However, due to the COVID-19 pandemic and associated public health directives, Marathon County encourages Committee members and the public to attend this meeting remotely. To this end, instead of attendance in person, Committee members and the public may attend this meeting by telephone conference. If Committee members or members of the public cannot attend remotely, Marathon County requests that appropriate safety measures, including adequate social distancing, be utilized by all in-person attendees.

Persons wishing to attend the meeting by phone may call into the telephone conference beginning five (5) minutes prior to the start time indicated above using the following number:

Phone Number: 1-408-418-9388

Access Code: 146 646 1869

If Required, the Password is 1234

Please Note: If you are prompted to provide an "Attendee Identification Number" enter the # sign.
No other number is required to participate in the telephone conference.

When you enter the telephone conference, PLEASE PUT YOUR PHONE ON MUTE!

Agenda Items:

- 1. Call to Order**
- 2. Public Comment (15 minute limit)**
- 3. Approval of the Minutes of the Monday, November 2, 2020 Committee Meeting**
- 4. Operational Functions Required by Statute, Ordinance or Resolution:**
 - A. Discussion and Possible Action by Committee
 1. 2021 Forestry/Recreation Committee Tentative Meeting Schedule
 2. Consider the Renewal of Private Road Access Permits 2021-2025
 - B. Discussion and Possible Action by Committee to Forward to the Environmental Resource Committee for its Consideration
 1. Review and Consider Approving the 2021 Wildlife Work Plan – Brandon Stefanski, DNR Wildlife Biologist
 2. Review and Consider Approving the 2021 County Forest Work Plan – Resolution to Approve
 3. Resolution: Application for County Forest Acreage Payment
- 5. Policy Issues for Discussion and Committee Determination for Consideration by Environmental Resources Committee – None**
- 6. Educational Presentations/Outcome Monitoring Reports**
 - A. Press Release – Wisconsin County Forest Program Exceeds Certification Standards
 - B. McMillan Marsh Lease Amendment
 - C. Updated Fall 2020 Bid Summary

7. Next Meeting Date, Time, Location: January 5, 2021, 1:30pm, Rm. 5, 212 River Dr., Wausau, WI 54403

A. Announcements/Requests/Correspondence

B. Future Agenda Items: Nine Mile County Forest Event and Use Regulations, County Forest Ordinance Amendments, Cash Farm Lease Town of Easton

8. Adjournment

**SIGNED /s/ Thomas Lovlien
PRESIDING OFFICER OR DESIGNEE**

ANY PERSON PLANNING TO ATTEND THIS MEETING WHO NEEDS SOME TYPE OF SPECIAL ACCOMMODATION IN ORDER TO PARTICIPATE SHOULD CALL THE COUNTY CLERK'S OFFICE AT 261-1500 OR E-MAIL INFOMARATHON@MAIL.CO.MARATHON.WI.US ONE BUSINESS DAY BEFORE THE MEETING.

FAXED TO: Daily Herald and other News Media Groups
FAXED BY: Jodi Luebbe
FAX DATE/TIME: November 24, 2020 10:00 a.m.

NOTICE POSTED AT COURTHOUSE:
By: _____
Date: _____
Time: _____ a.m/p.m.

Members present: Tom Rosenberg, Arnie Schlei(c)-(via phone), Rick Seefeldt
Also present: Tom Lovlien-Forest Administrator, Jamie Polley-Director-(via phone), Chad Keranen-DNR Liaison-(via phone)

1. Call Meeting to Order – The meeting was called to order by Chairman Schlei at 2:00pm, Rm. 5, 212 River Dr., Wausau. Official notice and the agenda for the meeting was posted publicly in accordance with State statutes.

2. Public Comment – none brought forward

3. Approve Minutes – **Motion** / second by Schlei / Rosenberg to approve the minutes from the September 29, 2020 regular Forestry/Recreation Committee meeting. Motion **carried** by voice vote, vote reflected as 3-0.

4. Operational Functions Required by Statute, Ordinance or Resolution

A. Discussion and Possible Action by Committee

1. Consider Timber Sale Contract Extension Requests – Lovlien discussed five timber sales that are between 2½ to 3 years old and expiring December 30, 2020. The State has given zero percent extensions to all contracts expiring December of 2020. Lovlien’s recommendation is to be consistent with the State and many other counties that have given extensions at zero percent for one year because of the COVID pandemic and the Verso mill closure. **Motion** / second by Rosenberg / Seefeldt to approve extension requests for contracts #668-18, #665-18, #666-18, 671-18, and #660-17 at a zero percent increase. Motion **carried** by voice vote, vote reflected as 3-0.

Lovlien explained that there are two five-year old sales that contractors requested a third extension. Lovlien’s recommendation takes into consideration the COVID pandemic and the Verso mill closure. Both of those contracts had previously received a free extension because the weather was not conducive to getting them cut and also a second extension with a twenty-percent increase in stumpage. Both contractors have indicated that they will try to get the sales cut this year. Lovlien believed it was in the best interests of the County to give both contracts one more year at a zero percent increase considering everything that has happened over the last year. The contracts can be re-evaluated for an extension or closed out next year if they don’t get the sales finished. **Motion** / second by Schlei / Rosenberg to approve contract #642-15 and contract #644-15 for a third extension with a zero percent increase. Motion **carried** by voice vote, vote reflected as 3-0.

2. Consider Timber Bids and Award Contracts – Lovlien said bids were opened this afternoon on tract #7-20 which didn’t sell last month. Two bids were received and Koerner Forest Products was the high bidder. The bid amount is between the advertised and the appraised value so according to DNR rules the sale can be awarded. Koerner Forest Products doesn’t have any sales with the County currently and has not cut on County forest land before. Lovlien couldn’t get ahold of his references today but has spoken to Keranen who said Koerner Forest Products does a lot of work in this area. Lovlien also mentioned that Koerner is a master logger so assuming his references check out, Lovlien’s recommendation is to award the sale to Koerner Forest Products. **Motion** / second by Rosenberg / Seefeldt to award the sale to Koerner Forest Products as long as Koerner’s references check out positively. Motion **carried** by voice vote, vote reflected as 3-0.

Discussion and Possible Action by Committee to Forward to the Environmental Resource Committee for its Consideration - None

5. Policy Issues for Discussion and Committee Determination for Consideration by Environmental Resources Committee – Resolution: Approving the Marathon County Forest Comprehensive Land Use Plan. Here is a link to the plan:

<https://www.co.marathon.wi.us/Departments/ParksRecreationForestry/PlanningandDevelopment/FINALDraft/MarathonCountyForestComprehensiveLandUsePlan20212035.aspx>

Lovlien explained that Corporation Counsel has made a few minor changes to the resolution. Lovlien discussed the process that the plan has gone through to get to this point. He discussed some of the themes that came from the survey

and said most of the comments received were trail related. Some people want more trails, some want less trails, but the majority want the trails to be multi-use so that everybody can use them. A policy has been in place since 2004 not to expand any new trail mileage for any groups. Some adjustments have been made over the years for resource or safety reasons. Other themes included sustainable forest management, forest wildlife habitat, the land acquisition process, concerns about exotic invasive species and forest protection, to continue the feasibility study of snowmaking at Nine Mile Forest, and not to exclude the traditional users especially hunting or trapping. He noted that the plan was sent to DNR for their thirty-day legal review and some minor changes involving grammatical errors and missing words were made. No major policies changed in the plan. This is not a static plan and can be amended at any time with County Board and DNR approval. **Motion** / second by Schlei / Seefeldt to approve the final County Forest Comprehensive Land Use Plan and forward it on to the Environmental Resources Committee and County Board for final approval. Motion **carried** by voice vote, vote reflected as 3-0.

6. Educational Presentations/Outcome Monitoring Reports

A. Senator Tammy Baldwin's Letter to Verso Corporation – Lovlien said it appears that the sale of the Verso mill has been paused. The Great Lakes Timber Producers Association and others developed a cooperative and wanted to figure out a way to buy the mill and get it running sooner rather than later. The company is owned by investors who appear to want to turn the biggest profit for their shareholders. Senators Baldwin, Testin and Representative Krug sent letters to Verso asking the owners to reconsider and think about the families of those that have been laid off and the forest industry in Wisconsin and get the sale back in motion. It has been Lovlien's experience that the longer they are closed the less likelihood that they are going to be sold and reopen.

B. Update on Verso Corporation Mill – Lovlien said that the Timber Professionals Association and the Cooperative is still working with the DNR, the Wisconsin Economic Development Corporation, and others on a resolution to the mill closure.

C. Fall Timber Bid Summary – Keranen explained that he will be recalculating the bid summary because of the sale sold today. He said the averages would not change a whole lot. The general theme of the bid opening was that due to the slowdown during last summer, the pandemic, the Verso mill closure and all of the sales requiring frozen ground the bid averages now are a little bit lower than they have historically been. He thought the County was fortunate to have sold all five sales.

D. New Chief State Forester Named – Lovlien said Heather Berklund was named the new Chief State Forester. She has been in forestry for more than twenty years, has a good field forestry background and knows a lot about public lands forest management. Lovlien said she has been easy to work with through the Wisconsin County Forests Association, is responsive and informed. Lovlien felt all of her experience will help her in her new position because she can relate to all aspects of forestry.

7. Next Meeting Date, Time, Location: December 1, 2020, 1:30pm, Rm. 5, 212 River Dr., Wausau WI 54403

A. Announcements/Requests/Correspondence – none brought forward

B. Future Agenda Items: Consider Renewing Private Road Access Permits, 2021 County Forest Work Plan, 2021 County Forest Wildlife Work Plan, Application for County Forest Acreage Share Payment, 2021 Forestry/Recreation Committee Tentative Meeting Schedule, McMillan Marsh Lease Amendments, Consider Cash Farm Lease

8. Adjourn – **Motion** / second by Seefeldt / Rosenberg to adjourn the meeting at 2:30pm. Motion **carried** by voice vote, vote reflected as 3-0.



MEMO

To: Forestry/Recreation Committee
From: Tom Lovlien, Forest Administrator
Date: December 1, 2020
Re: 2021 Meeting Dates

Meetings begin at 1:30pm

Tuesday, January 5	212 River Drive, Room 5
Tuesday, February 2	212 River Drive, Room 5
Tuesday, March 2	212 River Drive, Room 5
Tuesday, March 30	212 River Drive, Room 5
Tuesday, May 4	212 River Drive, Room 5
Tuesday, June 1	212 River Drive, Room 5
Tuesday, June 29	212 River Drive, Room 5
Tuesday, August 3	212 River Drive, Room 5
Tuesday, August 31	212 River Drive, Room 5
Tuesday, October 5	212 River Drive, Room 5
Tuesday, November 2	212 River Drive, Room 5
Tuesday, November 30	212 River Drive, Room 5

PIKE LAKE RD

Elderion Forest Unit

Legend

-  Snowmobile Trails
-  Trails
-  Streams
-  Lakes
-  Wetlands
-  Parking Lot

0 0.05 0.1 0.2 0.3 Miles



(X) Access Permit REQUESTS

HIGHTOWER DR

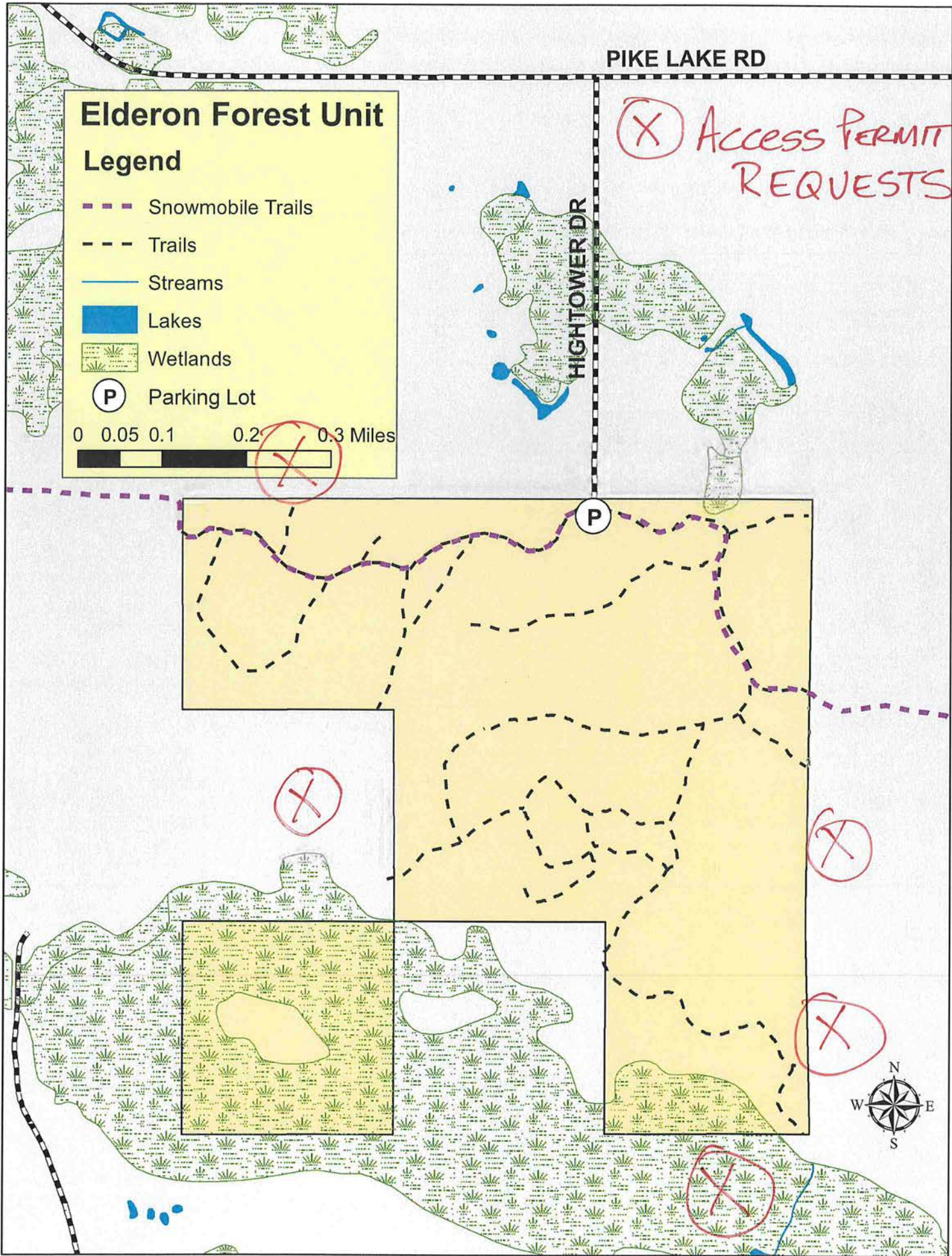
P

(X)

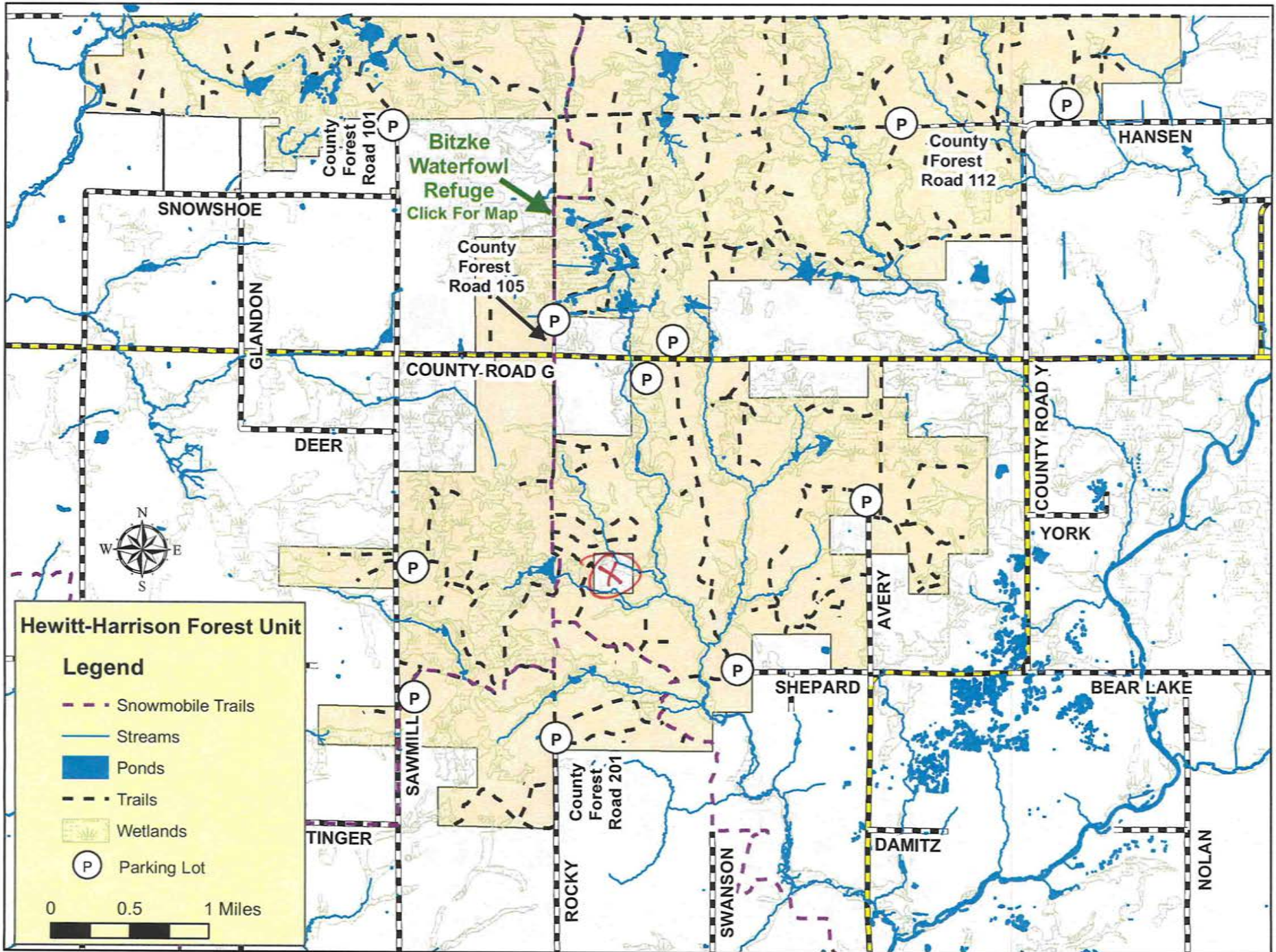
(X)

(X)

(X)



(X) ACCESS PERMIT REQUESTS



Wausau and Marathon County Parks, Recreation, and Forestry Department Forestry Division 2021 Work Plan

Personnel:	Forest Administrator	1.00 FTE
	County Forester	0.80 FTE
	Director	0.06 FTE
	Department Clerical Support	0.50 FTE
	Maintenance Specialist (labor)	0.26 FTE
	Maintenance Technician (labor)	0.26 FTE
	Recreational Officer (Sheriff)	0.04 FTE
	DNR Cooperative Assistance (State Funded)	0.35 FTE
	Total	3.27 FTE

A. Timber Management:

1. Evaluate a minimum of 5% of the forest (1550 acres) and update compartment reconnaissance.
2. Establish and advertise 625-675 acres of timber for sale. Timber sale acreage and locations are determined using the Wisconsin Forest Inventory and Reporting System (WisFIRS) and proposed long-term harvest goals chapter 2000 of the County Fifteen Year Comprehensive Plan. Specific locations and details about timber harvests scheduled for the coming year can be obtained by contacting the County Parks, Recreation and Forestry Office.
3. Administer the cutting and scaling of 30 timber sales on 2024 acres established on County Forest Land with an estimated stumpage value of \$1,288,537.69.
4. Administer the cutting and scaling of one timber sale on 23 acres at Mission Lake Park with an estimated stumpage value of \$7,381.96.
5. Allow forest succession to naturally convert some oak and aspen stands to hardwood.
6. Complete deer browse surveys at Big Eau Pleine Park and on County forest lands to determine to what extent tree regeneration is being affected.
7. Classify habitat types on a minimum of 1000 acres.
8. Calculate allowable harvest levels out 20 and 30 years to ensure sustainability.
9. Evaluate 35-40 year-old aspen stands to determine feasibility of harvesting stands early to improve age class distribution and stabilize harvest levels.
10. Issue approximately 25 firewood permits.
11. Release 2019 planting of white pine and white spruce at Kronenwetter Forest Unit.
12. Release 2020 plantings of red pine at the Miller and Nine Mile Forest Units.
13. Evaluate release needs for all acres of red pine planted since 2012. Release plantations by mechanical or herbicides as needed.

14. Continue to assist the Wisconsin Department of Natural Resources with an oak wilt study to confirm the frill-girdle-herbicide method to stop the disease from spreading through interconnected root systems.
15. Complete forest inventories and management recommendations on park properties.
16. Continue implementing the policy on annosum root rot disease requiring contractors to spray conifer stumps with fungicide to prevent infection according to DNR recommendations.
17. Establish a timber sale at Big Eau Pleine Park.
18. Monitor timber sales for unauthorized timber removal using the video detection system.
19. Monitor, evaluate, and treat oak wilt pockets in Nine Mile and other Forest Units.
20. Monitor, evaluate, and treat invasive species on the forest.
21. Apply techniques that reduce the ash component in forest stands on County forest and Park lands according to DNR recommendations due to Emerald Ash borer being found in the County for the first time in 2017.

B. Road, Trail, and Facility Construction and Maintenance:

1. Continue the contract with APHIS for beaver control.
2. Inspect county forest and park boundaries as needed to control encroaching uses from neighboring private land owners.
3. Contract with professional land surveyors to complete surveys where needed to facilitate administration between County Forest and private lands.
4. Mow 50 miles of hunter walking trails and associated wildlife openings.
5. Mow all forest road ditches in the County Forest.
6. Maintain pit toilets at Bitzke Nature Trail, Burma Road and Nine Mile Forest Units.
7. Continue to assist law enforcement for illegal tree stands, unauthorized motorized use, and dumping on County Forest property.
8. Continue to assist law enforcement to enforce seasonal closures and ordinance violations at Nine Mile and other Forest Units.
9. Resurface up to 2 miles of trails in Nine Mile and Burma Forest Units.
10. Maintain 6.48 miles of certified County Forest Roads.
11. Fabricate and install gates where needed.
12. Place granite on roads and trails in Forest Units to patch holes as needed.
13. Check the National Heritage Inventory Database (NHI) and the Wildlife Action Plan for endangered resources on any project that occurs on the County Forest.
14. Complete a County Conservation Aids project at Duane Corbin Shooting Range Park that replaces archery shooting platforms and targets.
15. Complete a County Conservation Aids Project at DC Everest County Park that replaces boat planks and asphalt near the landing.
16. Replace culverts in Leathercamp, Kronenwetter, Nine Mile and Burma Forest Units as needed.
17. Continue mitigation of the 2010 flood using a FEMA grant at the Bern Forest Unit.
18. Complete an Archeological search on any proposed project on County Forest lands.

C. Land and Equipment:

1. Negotiate the purchase of additional lands to enter as County Forest that will improve blocking, facilitate management and aligns with the Marathon County Strategic and County Forest Comprehensive Land Use Plans.
2. Maintain all vehicles and equipment.

D. Developed Recreation (Non-Motorized):

1. Participate in the planning, administration and approval of all trail construction, expansions, relocations, and maintenance on County Forest Lands.
2. Monitor reconstruction of 2 km of the Nine Mile ski trail to improve trail profile and surface characteristics.
3. Assist park facilities division in administering intensive recreation at Nine Mile.
4. Utilize volunteers to brush up to 20 km of ski trail.
5. Monitor the non-motorized recreation on County Forest Land.

E. Developed Recreation (Motorized):

1. Participate in the planning, administration, and approval of all trail construction, expansions, relocations, and maintenance on County Forest Lands.
2. Monitor and approve reconstruction of the Burma Road Forest ATV/UTV trails.
3. The Central Wisconsin Trailblazers ATV/UTV club will maintain 11 miles of ATV/UTV trail in the Burma Road Forest to include brushing, grading, signing, and mowing.
4. Assess all trails and land in the Burma Road Forest to protect the resource from excessive soil erosion and to prevent illegal off-trail use.
5. Volunteers will brush up to 42 miles of snowmobile trail on County Forest Land.
6. Monitor the snowmobile program on County Forest Land.
7. Monitor and enforce ordinances pertaining to the unauthorized motorized use (ATV/UTV) on all County Forest Units.

F. Wildlife Management (Partially Grant funded):

1. Complete work identified in the DNR annual wildlife work plan. (See attached plan).
2. Mow flowage dikes, forest trails and select openings for brush control.
3. Seed select forest trails following timber sales to enhance wildlife habitat.
4. Improve forest opening condition through mechanical and chemical applications.
5. Cooperate with the DNR on identifying tag alder to shear in the Harrison-Hewitt and Leathercamp Forest Units.
6. Cooperate with the Ruffed Grouse Society and the United States Fish and Wildlife Service on tag alder shearing in Harrison-Hewitt Forest Unit.

G. Administration and GIS:

1. Implement the 2021-2035 County Forest Comprehensive Land Use Plan.
2. Develop and improve the Forestry Division portion on the Department's web page.
3. Continue to work with the Forest Citizen's Advisory Subcommittee for county forests to address issues of concern including use conflicts at Nine Mile during the fall season, the sustainability of mountain biking, equestrian user needs, and the impact of forest management on hunting.
4. Amend the County Forest Comprehensive Land Use Plan to reflect ordinance, boundary, and policy changes.
5. Continue implementing marking guidelines, Best Management Practices for Invasive Species and Biomass Harvesting guidelines on the County Forest.
6. Attend the Annual DNR integrated planning meeting to evaluate, maintain, and improve the County/DNR partnership.
7. Develop interpretive displays explaining the benefits of sustainable forest management for display at recreation areas.
8. Monitor and administer all road use, land use, and other agreements/leases currently on County Forest Lands. Develop new agreements or leases when appropriate.
9. Implement and monitor third party Sustainable Forestry Initiative (SFI) forest certification on the Marathon County Forest.
10. Coordinate integration of the County Forest Comprehensive Land Use Plan with the Marathon County Comprehensive and Strategic Plans.
11. Continue to implement the DNR Wisconsin Forest Inventory Reporting System (WisFIRS).
12. Follow the Bern Flowage emergency action plan, if required, due to flooding.
13. Review county zoning to ensure alignment with the County Forest Comprehensive Land Use Plan.
14. Apply for grants and permits that accomplish County Forest and Park land improvements.
15. Supervise the County Forester and other seasonal employees.
16. Continue to be part of the senior administration team working on strategic planning and other initiatives to meet Department and County goals.
17. Work with next County Forest Liaison Forester to ensure a smooth transition following the transfer of the current liaison to another DNR position.

H. Public Outreach/Professional Development (Public Outreach dependent on Covid)

1. Participate in school career programs and make at least two classroom presentations on forestry and natural resource management.
2. Attend County sponsored training including IDEAS, inclusivity and other management as required.
3. Participate in job shadows introducing students into the forestry profession.
4. Continue to assist the public with insect, disease, and timber management information.

5. Give tours on the County Forest including UW-Stevens Point and the Forestry/Recreation Committee as time allows.
6. Attend appropriate professional development training.
7. Maintain membership in the Society of American Foresters.
8. Attend Forest Certification training as required.
9. Continue to work with the Wisconsin County Forests Association (WCFA) by serving as a member of the Legislative/Forest Certification Committee on issues affecting County Forests.
10. Continue involvement on numerous WCFA committee's advancing the practice of forestry.
11. Participate in the revision of the WCFA strategic plan 2022-2027.
12. Continue updating maps to be included in new Forest Unit brochures and website for the public.
13. Revise and develop recreational maps for the public including cross country skiing, snowmobiling, equestrian and single track mountain biking for County Park and Forest lands.

2021 MARATHON COUNTY FOREST WILDLIFE WORK PLAN

This represents the 2021 Annual Wildlife Work Plan, pursuant to the fifteen-year Comprehensive Plan for the Marathon County Forest.

Personnel

Assistance to the County Forest Administrator and DNR Liaison Forester will be provided in all wildlife matters concerning the County Forest. The DNR Wildlife Biologist and Wildlife Technician positions assigned to Marathon County were filled throughout 2020. However, Covid related work restrictions throughout the spring and early summer restricted DNR staff's ability to accomplish some of the planned work.

Flowage Management

Flowages were managed to keep water levels stable throughout the year. Waterfowl production and sightings were variable on Marathon County flowages. Beaver issues and damage were down from previous years, but their presence in some flowages prevented water manipulation activities.

Dike Maintenance:

Muskrat and beaver holes on the flowage dikes are usually patched to maintain their integrity. The dikes were checked in 2020, but rodent damage was minimal, and repairs were not needed. Nienow, Lower Nienow, Leo, Lower Leo, Swamp and Whiskey flowage dike tops in the Harrison-Hewitt unit were mowed during the summer.

The USDA-Wildlife Services was not contracted to trap and remove problem beaver in 2020 on flowages due to funding constraints. The USDA did remove beaver at East Flowage and Steinke Pond at Bitzke Refuge during their normal trapping efforts on County Forest. A private trapper also removed several beaver out of Birch flowage during the fall of 2020. In 2021, DNR plans to contract with USDA-Wildlife Services to trap beaver on the flowages due to increasing beaver damage.

Bern Flowage:

Bern flowage is chronically affected by floating cattail masses that have moved to the Northeast side of the flowage. These cattail masses occasionally plug the dam. Contractors have removed cattails for several years along the dike and weir with an excavator. This technique has proven to be effective at keeping the water flowing and water levels stable. There are still cattails that need to be removed from the flowage as they move closer to the weir. A contractor removed cattails during November of 2020 and will continue to remove cattails in 2021 as needed. Additional options of removing cattail are being explored by DNR wildlife management and County Forestry staff.

Wild Rice:

Wild rice production was down on Lower Nienow flowage compared to previous years. Patches of rice were seen at Nienow, Leo and Swamp flowages in the Harrison-Hewitt unit and the East #2 and Birch flowages at Nine Mile. Rice production at Lower Leo was excellent following a 2019 planting.

In October of 2020, managers purchased 109 lbs. of wild rice and seeded Lower Leo, Nienow, Lower Nienow and Swamp flowages.

Flowage Management:

Planned flowage management for 2021 includes a continuation of the flowage drawdown rotation. All the flowages will benefit from being drawn down periodically (~ every 5 years). Drawdowns reduce undesirable plant species, allow desirable plant species to germinate and return nutrients to the soil. The drawdown plan for 2020 called for drawdowns on Steinke, Nienow and Nine Mile East #2 flowages. All the boards were left pulled at Steinke flowage and was drawn down most of the year after the beaver dam was removed. Nienow flowage and Nine Mile East #2 were not brought down due to beaver and Covid work restrictions. In 2021, managers plan to draw down Nienow flowage and Nine Mile East #2.

Herbicide treatments:

No herbicide treatments took place by DNR wildlife management staff in 2020.

Forest Management

Openings Management:

Maintaining early successional habitat, such as grass openings, is an important part of Central Wisconsin forest management. In 2020, 13 forest openings were mowed in the Harrison-Hewitt, Ringle and Leather Camp units. Twenty-seven openings were scheduled to be managed in 2020. The openings not managed will be added to future work plans.



Openings mowed in Ringle in 2020

In 2021, wildlife staff plan to manage twenty-one openings in the Harrison-Hewitt and Nine Mile units. We were also awarded a \$2,500 grant from the Ruffed Grouse Society that will allow for renovations of twenty degraded openings in Kronenwetter and Leather Camp over a two-year period. This renovation project will enhance 15-20 acres of wildlife openings in those two units.

Trails:

Several forest trails (~ 1 mile) on the Harrison-Hewitt, Ringle and Leather Camp units were seeded with a clover/grass mix in the summer of 2020. Seeding trails post-logging prevents erosion and provides a valuable food source for ruffed grouse and other game and non-game species. Trails and log landings will be seeded in Marathon County in 2021 as requested by Marathon County Forestry staff.

Alder Management:

Poor conditions prevented planned alder management from being accomplished during the winter of 2019-20. Managers have set a goal of mowing 10-20 acres of alder during the winter of 2020-21. Meeting these goals will rely on acceptable weather conditions as well as having equipment and an operator available. A contractor will likely be hired to accomplish this work. Multiple sites in Leather Camp County Forest Unit have been identified for alder mowing.

Grasslands/ Hoffman Farm

In 2020, managers planned to conduct a prescribed burn on the Hoffman Farm unit south of County Road G. Due to very wet conditions and burn priorities, this burn was not accomplished.

The large burn unit south of County Road G is recommended to be burned during the fall of 2021. The firebreak will need to be installed during the summer of 2021 to accomplish this burn.

2020/2021 Nickel-an-Acre Budget

The following table lists the 2020 Nickel-an-Acre project budgets and expenses. It also includes proposed 2021 projects and the associated spending plan.

Project Activity	2020 Budgeted	2020 Expended	2021 Budgeted
Flowage Maintenance (dikes, spillways, structures)	\$500	\$278.70	\$300
Flowage Maintenance (brush/cattail removal-dikes)	\$500	\$0	\$300
Wildlife Opening Maintenance	\$500	\$446.21	\$900
Trail Seeding	\$100	\$0	\$100
Wild Rice Seeding	\$400	\$529.28	\$500
Alder Management	\$500	\$0	\$500
Totals	\$2,500	\$1254.19	\$2,600

After all expenses are subtracted, the Nickel-an-Acre account balance at the end of 2020 should be \$2228.88. This will increase to \$3,639.95 after deposit of the 2021 allotment.

Submitted by:

Brandon Stefanski, DNR Wildlife Biologist, Marathon County

Paul Napierala, DNR Wildlife Technician, Marathon County

Approved by:

Tom Lovlien, Marathon County Forest Administrator

Arnold Schlei, Chairperson, Marathon County Forestry/Recreation Committee

Chad Keranen, DNR Forestry Liaison, Wausau

TO APPROVE THE ANNUAL COUNTY FOREST WORK PLAN

WHEREAS, Marathon County has lands enrolled in the Wisconsin County Forest Land Program commonly referred to as the Marathon County Forest; and

WHEREAS, the Marathon County Forest Comprehensive Land Use Plan requires an annual work plan to be approved by the Marathon County Board of Supervisors to be eligible for certain grant funding per §28.11(5)(b), Wis. Stats.; and

WHEREAS, the Forestry/Recreation Committee approved the 2021 Forestry Division Work Plan at its regular meeting held December 1, 2020; and

WHEREAS, the Marathon County Board of Supervisors adopted the 2021 Wausau and Marathon County Parks, Recreation and Forestry Department Budget at its budget meeting November 10, 2020.

NOW, THEREFORE BE IT RESOLVED, the County Board of Supervisors of the County of Marathon does hereby ordain and resolve as follows: To approve and adopt the attached 2021 Forestry Division Work Plan.

BE IT FURTHER ORDAINED AND RESOLVED, that the County Clerk is directed to issue checks pursuant to this resolution and the Treasurer to honor said checks.

Dated this 15th day of December, 2020.

FORESTRY/RECREATION COMMITTEE

ENVIRONMENTAL RESOURCES COMMITTEE

Fiscal Impact Estimate: No Budgetary Tax Levy Impact. If the Resolution is not approved, the County would lose \$64,791.00 State Grant Funds.

APPLICATION FOR COUNTY FOREST ACREAGE SHARE LOAN PAYMENT

WHEREAS, Counties having lands entered as “County Forest Lands”, under the provisions of Sec. 28.11(4)(b), Wis. Stats., annually receive from the state a non-interest bearing loan to be used for the purchase, development, preservation and maintenance of such lands; and

WHEREAS, said loan monies are repaid through a 20% severance tax on timber revenue coming from County Forest Lands unless a higher rate is mutually agreed to by the County and the department; and

WHEREAS, the current provisions of Sec. 28.11 (8)(b)1 make it possible for the County, at its option to receive not more than 50 cents per acre to meet the needs identified in its County Forest Comprehensive Land Use Plan.

NOW, THEREFORE, BE IT RESOLVED, that the Board of Supervisors of the County of Marathon, in consideration of meeting the needs identified in its County Forest Comprehensive Land Use Plan hereby request the Department of Natural Resources to provide the 2021 payment to the County on the basis of 50 cents for each acre of Marathon County Forest Lands; and

BE IT FURTHER ORDAINED AND RESOLVED that the Clerk is hereby authorized and directed to file this request with the Department of Natural Resources prior to December 31st preceding the year in which said payment is being requested to be made.

Dated this 15th day of December, 2020.

FORESTRY/RECREATION COMMITTEE

ENVIRONMENTAL RESOURCES COMMITTEE

Fiscal Impact: Wausau and Marathon County Parks, Recreation, and Forestry Department will receive \$14,911.16 as an interest free loan to be used for forest maintenance, development and land acquisition.



Wisconsin County Forests Association

PRESS RELEASE

FOR IMMEDIATE RELEASE - NOVEMBER 3, 2020

Wisconsin County Forest Program Exceeds Certification Standards

For the 17th consecutive year, twenty-seven of Wisconsin's County Forests have exceeded the standards for certified forests as set by the Sustainable Forestry Initiative® (SFI) and/or Forest Stewardship Council® (FSC). SFI and FSC are two of the most widely recognized forest certification systems in North America. Representatives from NSF-International Forestry Program and Scientific Certification Systems Global Services comprised the audit team conducting the evaluations of Wisconsin's County Forests. Certification means that these forests conform to strict environmental, social and economic standards.

According to Rebekah Luedtke, Executive Director of the Wisconsin County Forests Association, "We were not surprised the 2020 certification audit findings showed that the hard work county forest staff put into properly managing these forests is paying off. The focus of the Wisconsin County Forests is to ensure the long-term health and sustainability of forest ecosystems while providing benefits to the public."

Collectively, county forests in Wisconsin represent the largest public landholding in the state covering over 2.4 million acres. Active sustainable forest management provides healthy forest conditions, robust wildlife habitat, clean water resources and numerous outdoor recreation amenities and services. In 2019 alone, forest products from these forests generated over \$44.6 million in timber sale revenue for the counties and townships encompassing these lands, reducing local tax levies while maintaining healthy, sustainable forests. Wisconsin's County Forest system also provides more than 9,000 miles of snowmobile trails, 1,800 miles of ATV/UTV trails, 1,800 miles of non-motorized trails (biking/hiking/cross-country skiing, snowshoe and horseback) and 330 campsites along with a wealth of hunting, fishing and nature viewing opportunities.

A cooperative management framework between the Wisconsin Department of Natural Resources (DNR) and the counties provides the opportunity for the county forest group certification program. DNR holds the group certificates for the 27 participating counties and provides technical support to county forest management efforts. Heather Berklund, Chief State Forester of the DNR states, "DNR personnel work closely with the staff of the County Forests to manage these healthy, productive and sustainable forests. The county forest program is a unique partnership that stretches back over 90 years and is a fine example of local governments and state agencies working together to address statewide resource needs and services."

Merrill, WI

The Wisconsin County Forests Association provides leadership uniting the interests of the world's largest county forest program while ensuring long-term forest health and sustainability.

Information on the Wisconsin County Forests Association can be found at www.wisconsincountyforests.com.

Media Contact:

Rebekah Luedtke, Executive Director

Phone: (715) 539-1097

Email: info@wisconsincountyforests.com

Document Number

Document Title

State of Wisconsin
Department of Natural Resources
Box 7921
Madison, WI 53707-7921

**Third Amendment to Lease and
Agreement**

Recording Area

Return:

Department of Natural Resources
Bureau of Facilities and Lands – LF/6
P.O. Box 7921
Madison, WI 53707-7921
Attn: Bill Peterson (L 75)

THIS THIRD AMENDMENT TO LEASE AND AGREEMENT is entered into by and between the State of Wisconsin Department of Natural Resources (“Department”) and Marathon County (“County”).

RECITAL

THIS INDENTURE amending the Lease and Agreement entered into this 3rd day, of November, 2020, between the State of Wisconsin, Department of Natural Resources, hereinafter referred to as the Department, and Marathon County, hereinafter referred to as the County;

NOW, WHEREAS, the Department, formerly known as the State Conservation Commission of Wisconsin, and the County, entered into a written "Lease and Agreement" on April 20, 1966, and recorded as Document #682603 in Vol. 208 MR, Page 285 of the Marathon County records; and

WHEREAS, the "Lease and Agreement" is for a period of ninety-nine (99) years on a large contiguous tract of land, consisting of approximately 1,642 acres located in Marathon County and owned by the County; and

WHEREAS, said "Lease and Agreement" was amended in August, 1980, to increase annual rental paid by the Department from 30 cents per acre to 90 cents per acre; and

WHEREAS, **paragraph 6** of said "Lease and Agreement" provides the opportunity for additional lands owned or acquired later by the County to be included within the terms of said "Lease and Agreement", if approved by both the County and the Department; and

WHEREAS, the County has acquired the following described real property by tax deed dated July 11, 1988, and recorded as Document #891877 in Vol. 483 MR Page 474, then corrected and rerecorded as Document #892798 in Vol. 484 MR Page 794 of the Marathon County Records:

1. The 100 foot R/W across Section 17 and parts of Blocks 4 and 5 of the Plat of McMillan in Section 17 located in Township 26 North, Range 3 East, Town of McMillan, County of Marathon, State of Wisconsin, **except** land described in Vol. 364 MR Page 1181 of the Marathon County Records, and **except** the N1/2 of said Section 17; consisting of 7.4 acres.
2. The R/W across Section 20 and parts of Blocks 4 and 5 of the Plat of McMillan in Section 20 located in Township 26 North, Range 3 East, Town of McMillan, County of Marathon, State of Wisconsin, **except** that part in the SE 1/4 of the SW 1/4 of said Section 20; consisting of 12 acres; and

WHEREAS, the Department and the County have agreed to the addition of the above described real property into the Second Amendment to the "Lease and Agreement", which was recorded at the Marathon County Register of Deeds Office on May 19th, 1997 as Document # 1102491.

WHEREAS, it was recently brought to the Department’s attention that the Department had inadvertently left out six, 40 acre parcels from previous legal descriptions that were attached to either of the two previous

Amendments to Lease and Agreements.

WHEREAS, THIS THIRD AMENDMENT TO THE "Lease And Agreement" includes the following six, 40 acre parcels. The SE1/4 of the NE1/4, the NW1/4 of the SE1/4, the NE1/4 of the SE1/4, the SW1/4 of the SE1/4, the SE1/4 of the SE1/4 and the SE1/4 of the SW1/4, all in Section 14, Township 26 North, Range 2E, Town of Spencer, Marathon County, Wisconsin.

NOW, THEREFORE, WITNESSETH: That the terms and conditions of the "Lease and Agreement" dated April 20, 1966, and amended in August of 1980 and in May of 1997 are further amended as follows:

1. An amended Exhibit "A" (attached hereto and incorporated herein by reference) shall be recorded in the Office of the Marathon County Register of Deeds to reflect addition of the above described real property.
2. Forty percent of the rental fee payable under the "Lease and Agreement", as amended in August, 1980, shall be paid to the Town of McMillan for the above described property. Sixty percent of the amount shall be placed into the Segregated Land Purchase account Number 8221 Rev Object to be used for the improvement of the County forests.

END OF TERMS AND CONDITIONS

IN WITNESS WHEREOF, the Department has caused this instrument to be executed on its behalf this _____ day of _____, 2020.

State of Wisconsin
Department of Natural Resources
For the Secretary

By _____ (SEAL)
Terry H. Bay
Facilities and Lands Bureau Director

State of Wisconsin)
) ss.
Dane County)

Personally came before me this _____ day of _____, 2020, the above named, Terry H. Bay, Facilities and Lands Bureau Director, State of Wisconsin Department of Natural Resources, to me known to be the person who executed the foregoing instrument and acknowledged that he executed and delivered the same as for the act and deed of said Department of Natural Resources.

*
Notary Public, State of Wisconsin
My Commission (expires)(is) _____

IN WITNESS WHEREOF, the County has agreed to and caused this easement to be executed on its behalf this ___ day of _____, 2020.

MARATHON COUNTY

By - _____ (SEAL)
Lance Leonhard
Marathon County Administrator

State of _____)
) ss.
Marathon _____ County)

Personally appeared before me this _____ day of _____, 2020_, the above named Lance Leonhard, Marathon County Administrator to me known to be the person who executed the foregoing instrument and acknowledged the same as and for the act and deed of the County.

*
Notary Public, State of Wisconsin
My commission (expires) (is) _____

*Please print names

This instrument drafted by:
State of Wisconsin
Department of Natural Resources

Amended Exhibit "A"

Township 26 North, Range 2 East, Town of Spencer, Marathon County, Wisconsin

Section 11: Northeast $\frac{1}{4}$ of the Southwest $\frac{1}{4}$, Southeast $\frac{1}{4}$ of the Southwest $\frac{1}{4}$, Southeast $\frac{1}{4}$ of the Southeast $\frac{1}{4}$, the South 30 feet of the Southwest $\frac{1}{4}$ of the Southwest $\frac{1}{4}$ and

Section 13: Southwest $\frac{1}{4}$ of the Northwest $\frac{1}{4}$, Northeast $\frac{1}{4}$ of the Southwest $\frac{1}{4}$, Northwest $\frac{1}{4}$ of the Southwest $\frac{1}{4}$, Southwest $\frac{1}{4}$ of the Southwest $\frac{1}{4}$, Southeast $\frac{1}{4}$ of the Southwest $\frac{1}{4}$, Southeast $\frac{1}{4}$ of the Southeast $\frac{1}{4}$, Southwest $\frac{1}{4}$ of the Southeast $\frac{1}{4}$ and

Section 14: Northeast $\frac{1}{4}$ of the Northeast $\frac{1}{4}$, Northwest $\frac{1}{4}$ of the Northeast $\frac{1}{4}$, Southwest $\frac{1}{4}$ of the Northeast $\frac{1}{4}$, Northeast $\frac{1}{4}$ of the Northwest $\frac{1}{4}$, Southeast $\frac{1}{4}$ of the Northwest $\frac{1}{4}$, Northeast $\frac{1}{4}$ of the Southwest $\frac{1}{4}$, North 30 feet of the Northwest $\frac{1}{4}$ of the Northwest $\frac{1}{4}$, Southeast $\frac{1}{4}$ of the Southwest $\frac{1}{4}$, Northeast $\frac{1}{4}$ of the Southeast $\frac{1}{4}$, Northwest $\frac{1}{4}$ of the Southeast $\frac{1}{4}$, Southwest $\frac{1}{4}$ of the Southeast $\frac{1}{4}$, Southeast $\frac{1}{4}$ of the Southeast $\frac{1}{4}$, Southeast $\frac{1}{4}$ of the Northeast $\frac{1}{4}$ and

Section 23: Northeast $\frac{1}{4}$ of the Southeast $\frac{1}{4}$ and

Section 24: Northeast $\frac{1}{4}$ of the Northeast $\frac{1}{4}$, Northwest $\frac{1}{4}$ of the Northeast $\frac{1}{4}$, Southwest $\frac{1}{4}$ of the Northeast $\frac{1}{4}$, Southeast $\frac{1}{4}$ of the Northeast $\frac{1}{4}$, Northeast $\frac{1}{4}$ of the Northwest $\frac{1}{4}$, Northwest $\frac{1}{4}$ of the Northwest $\frac{1}{4}$, Southeast $\frac{1}{4}$ of the Northwest $\frac{1}{4}$, Northeast $\frac{1}{4}$ of the Southwest $\frac{1}{4}$, Northwest $\frac{1}{4}$ of the Southwest $\frac{1}{4}$, Northeast $\frac{1}{4}$ of the Southeast $\frac{1}{4}$, Northwest $\frac{1}{4}$ of the Southeast $\frac{1}{4}$, Southwest $\frac{1}{4}$ of the Southeast $\frac{1}{4}$, Southeast $\frac{1}{4}$ of the Southeast $\frac{1}{4}$, Southwest $\frac{1}{4}$ of the Northwest $\frac{1}{4}$ and

Section 25: Northeast $\frac{1}{4}$ of the Northeast $\frac{1}{4}$, Northwest $\frac{1}{4}$ of the Northeast $\frac{1}{4}$, Southwest $\frac{1}{4}$ of the Northeast $\frac{1}{4}$, Southeast $\frac{1}{4}$ of the Southeast $\frac{1}{4}$ and

Township 26 North, Range 3 East, Town of McMillan, Marathon County, Wisconsin

The 100-foot railroad right-of-way across Section 17 and parts of Blocks 4 and 5 of the Plat of McMillan in Section 17 located in Township 26 North, Range 3 East, Town of McMillan, County of Marathon, State of Wisconsin, *except* land described in Vol. 364 MR Page 1181 of the Marathon County Records, and *except* the N $\frac{1}{2}$ of Section 17; consisting of 7.4 acres and

The railroad right-of-way across Section 20 and part of Blocks 4 and 5 of the Plat of McMillan in Section 20 located in Township 26 North, Range 3 East, Town of McMillan, County of Marathon, State of Wisconsin, *except* that part in the Southeast $\frac{1}{4}$ of the Southwest $\frac{1}{4}$ of Section 20, consisting of 12 acres

MARATHON COUNTY FOREST FALL 2020 BID OPENING RESULTS

SPECIES	TONS	HIGH BID	LOW BID	Weighted Average of All Bids	Weighted Average of High Bids	Wt. Av. High Bids Spring 2020	Wt. Av. High Bids Fall 2019	Wt. Av. High Bids Spring 2019
ASPEN	15020	\$11.00	\$3.00	\$7.57	\$9.57	\$10.00	\$9.47	\$17.38
MIXED HWD	4930	\$8.75	\$4.00	\$6.66	\$8.35	\$14.95	\$10.07	\$15.69
OAK	560	\$5.00	\$3.00	\$4.63	\$5.61	\$9.59	\$5.91	\$11.40
BASSWOOD	130	\$2.00	\$0.01	\$2.33	\$3.85	\$4.35	\$0.61	\$3.44
RED PINE	xxxx	xxxx	xxxx	xxxx	xxxx	\$22.48	xxxx	\$48.02
MBF								
RED OAK	36	\$250.00	\$125.00	\$166.35	\$163.19	\$296.52	\$217.93	\$414.66
RED MAPLE	174	\$200.00	\$140.00	\$167.36	\$185.36	\$211.50	\$213.72	\$332.84
WHITE ASH	31	\$200.00	\$100.00	\$181.62	\$229.17	\$185.71	\$142.86	\$257.94
BASSWOOD	34	\$100.00	\$50.00	\$77.45	\$88.24	\$173.68	\$159.38	\$200.00
SUGAR MAPLE	2	\$200.00	\$150.00	\$183.33	\$200.00	\$260.42	\$186.00	xxxx
MIXED HWD	xxxx	xxxx	xxxx	xxxx	xxxx	xxxx	\$150.00	\$250.00
BIOMASS								
All Species	3495	\$0.50	\$0.50	\$0.50	\$0.50	xxxx	\$0.25	\$0.50

Number of sales sold	5/5	5/5	6/6
Acres sold	381	281	397
Value of sales sold	\$227,755.00	\$214,095.75	\$551,371.85
Appraised value of sales	\$257,965.00	\$200,722.00	\$253,627.50
\$ / acre sold	\$597.79	\$761.91	\$575.96
Ton eq. sold	22,140	10,555	13,760
\$ / ton ave.	\$10.29	\$20.28	\$13.35
Cord eq. sold	9630	4590	5980
\$ / cord ave.	\$23.65	\$46.64	\$30.72
			\$75.11

This bid opening was for five county forest timber sales
 Received fifteen bids from seven separate bidders.
 Only one sale has a dry fall chance, otherwise all frozen ground.
 One sale was re-bid and sold in a second opening in November as it was far under the advertised value.
 Downward trend on stumpage prices as expected.