



# MARATHON COUNTY PARK COMMISSION AGENDA

## ADDENDUM

**Date and Time of Meeting:** Tuesday, March 1, 2022 at 10:30am

**Meeting Location:** 212 River Dr. Wausau WI 54403, Room 5

The meeting site identified above will be open to the public. Persons wishing to attend the meeting by phone may call into the telephone conference beginning ten minutes prior to the start time indicated above using the following number: 1-408-418-9388 Access code: 2486 621 8539. When you enter the telephone conference, PLEASE PUT YOUR PHONE ON MUTE!

### **Park Commission Members -**

Commissioners: Dawn Herbst, Jean Maszk, Allen Opall, Pat Peckham, Rick Seefeldt, James Wadinski, Kelly Zagrzebski

***Marathon County Mission Statement:*** *Marathon County Government serves people by leading, coordinating, and providing county, regional, and statewide initiatives. It directly or in cooperation with other public and private partners provides services and creates opportunities that make Marathon County and the surrounding area a preferred place to live, work, visit, and do business. (Last updated: 12-20-05)*

***Parks, Recreation and Forestry Department Mission Statement:*** *Adaptively manage our park and forest lands for natural resource sustainability while providing healthy recreational opportunities and unique experiences making Marathon County the preferred place to live, work, and play.*

### **Agenda Items**

1. **Call to Order**
2. **Public Comment Period – Not to Exceed 15 Minutes – Any Person Who Wishes to Address the Commission Must Provide, Name, Address and the Topic to the President of the Commission No Later than Five Minutes Before the Start of the Meeting.**
3. **Approval of the Minutes of the February 1, 2022 Park Commission Meeting**
4. **Policy Issues for Discussion and Committee Determination**
  - A. Discussion and Possible Action by Committee
    1. Lake Wausau Project Proposal – ADA Kayak Launch at DC Everest Park
    2. Park Facility Roofing Color and Material
    3. Park Hand Pump Well Replacement Options
5. **Operational Functions Required by Statute, Ordinance or Resolution:**
  - A. Discussion and Possible Action by Committee
    1. **Timber Sale Closeout: Flannel Fleet Logging- Contract #706-21**
  - B. Discussion and Possible Action by Committee to Forward to the Environmental Resource Committee for its Consideration
    1. Restructuring 0.75 FTE Motorized Recreation Coordinator to 1.0 FTE Recreation Coordinator
6. **Policy Issues for Discussion and Committee Determination for Consideration by Environmental Resources Committee**
  - A. None
7. **Educational Presentations/Outcome Monitoring Reports**
  - A. Park Update –Big Eau Pleine Firewood Processing, Peoples Sports Complex, Nine Mile Maintenance/Events, Mountain Bay Trail Maintenance, Marathon Park Operations and Maintenance, Routine Operations/Programs
8. **Announcements**
  - A. Next Meeting Date & Time, Location – Tuesday, April 5, 2022 at 10:30am, 212 River Dr, Room 5. Wausau, WI 54403
  - B. Future Agenda Items – **Big Eau Pleine Timber Sale Closeout**

**9. Adjourn**

Signed /s/ Jamie Polley  
Presiding Officer or Her Designee

*Any person planning to attend this meeting who needs some type of special accommodation in order to participate should call the County Clerk's Office at 715-261-1500 or e-mail [countyclerk@co.marathon.wi.us](mailto:countyclerk@co.marathon.wi.us) one business day before the meeting.*

FAXED TO DAILY HERALD

(Email/Fax City Pages, Marshfield News, Midwest Radio Group)

Date February 25, 2022 Time 1:30 p.m. and 4:15pm

By Jodi Luebbe

THIS NOTICE POSTED AT THE COURTHOUSE

Date \_\_\_\_\_ Time \_\_\_\_\_

By \_\_\_\_\_

**DRAFT**  
**MARATHON COUNTY PARK COMMISSION**

Date and Time of Meeting: February 1, 2022 at 10:30am Location: Assembly Room, Marathon County Courthouse, 500 Forest Street, Wausau WI 54403

Park Commissioners present: Jean Maszk-(via-webex), Pat Peckham-(via webex), Rick Seefeldt, James Wadinski, Kelly Zagrzebski

Excused: Dawn Herbst, Allen Opall

Staff present: Jamie Polley-Director, Andy Sims-(via webex)-Assistant Director of Operations

Others present: Bill Bertram, John Robinson, Sandy Cihlar

**1. Call to Order** – Vice-President Seefeldt called the Park Commission meeting to order at 10:45am. Official notice and the agenda for the meeting was posted publicly in accordance with the State statutes.

**2. Public Comment** – Sandi Cihlar, 203083 Bergen Road Mosinee, commented that she and another family had been startled by a bike coming up behind them on the snowshoe trail at Nine Mile on Jan. 30<sup>th</sup>. She supports fat tire biking but has a concern about what is compatible on shared trails and thought the snowshoe and bike trails should be kept separate. She appreciated the improvements in signage on the snowshoe trails. Polley commented that bikes are not allowed on the snowshoe trails, however there had been an event that weekend at Nine Mile that it could have been related to. She will give Cihlar’s comments to the Forestry Committee who will be hearing a proposal for fat tire biking at Nine Mile in the coming months.

**3. Approval of the Minutes of the November 30, 2021 Park Commission Meeting – Motion** by Maszk, second by Zagrzebski to approve the November 30, 2021 meeting minutes. Motion **carried** by voice vote, vote reflected as 5-0.

**4. Policy Issues for Discussion and Committee Determination**

A. Discussion and Possible Action by Committee

1. Great Pinery Heritage Waterway – Bill Bertram – President of the Wausau and Marathon County Park and Recreation Foundation spoke about a project to create historical signage and mapping information at landings along a river trail within Marathon County and branding it the Great Pinery Heritage Waterway. It would include the Wisconsin River, Rib River and lower Eau Claire River. Bertram discussed statistics regarding paddle sports, tourism and why he felt this area could be a premiere destination for paddling in Wisconsin. The North Central Wisconsin Regional Planning Commission would do the mapping and it could be promoted on the Central Wisconsin Visitor’s Bureau website. Bertram described locations of landings along the trail and said a State tourism grant will be applied for to market the trail. Polley said staff’s original concern was what the role of the Department would be because staff is spread so thin. The Department already has launches so adding signs to them would not be a real burden. She was hopeful that a maintenance fund would be put in place if major repairs were needed for a sign. She also thought they could consider a qr code on the signs for donations or possible future passes. Staff supports the project especially if there is a maintenance fund. Bertram thought any residual monies from fundraising would come into a maintenance account. Peckham thought the idea had a lot of potential and there was enough expanse of water in the area to spread out the use. He hoped they could publicize when the Wausau Whitewater organization has open water weekends and competitive events. John Robinson wondered about relying more on volunteers to do the project and wanted to make sure landings were accessible in terms of all abilities. **Motion** by Peckham, second by Wadinski that Polley draft a letter of endorsement indicating the support of the Department and Commission for the Great Pinery Heritage Waterway project. Motion **carried** by voice vote, vote reflected as 5-0.

2. Request by RC Sportsman for Overnight Camping in Sunny Vale Park August 12, 2022 – The RC Sportsmen group that leases the remote-control airfield at Sunny Vale Park is hosting the Annual Fun Fly on August 12<sup>th</sup> and 13<sup>th</sup>. They have been working with some scout groups who would like to have a small campout in their remote-control area on the night of the 12<sup>th</sup> prior to the event activities. Staff has given the group its expectations and doesn’t see any issues. **Motion** by Peckham, second by Maszk to approve the request by the RC Sportsman for camping overnight in Sunny Vale Park on August 12, 2022. Motion **carried** by voice vote, vote reflected as 5-0.

3. 2021 Year in Review – Polley gave department accomplishment highlights which included: held a successful 100+1 Anniversary Celebration, secured a 5 year sponsorship by People’s State Bank for the Sports Complex, fully implemented a new CivicRec recreation software, installed new playgrounds, managed vegetation with goats, maintained park and street trees, worked on grants, opened a dog park, increased recreation programs and lessons, managed and administered timber sales, maintained city and county parks, upgraded roads and campground electrical at Big Eau Pleine Park, installed new

radiant heat in Marathon Park ice arena, completed update to Sunnyvale Softball Complex, acquired land, replaced vault toilets and more.

4. 2022 PRF Department Workplan – Polley gave highlight about upcoming work which will include: working on the westside masterplan, department sustainability plan, Rib Falls Park master plan, and updating the City Comprehensive Outdoor Recreation Plan, treating and removing ash trees, planting new trees, researching snowmaking and fat tire biking at Nine Mile, securing more field sponsors for the People’s Sports Complex, installing playgrounds, continuing road work at Big Eau Pleine Park, replacing restrooms, establishing and administering timber sales, acquiring land, and more.

**5. Operational Functions Required by Statute, Ordinance or Resolution:**

A. Discussion and Possible Action by Committee - None

B. Discussion and Possible Action by Committee to Forward to the Environmental Resource Committee for its Consideration – Purchase of 39.085 Acres Adjacent to Brokaw County Park for Park Land – In August the Commission had approved staff to further pursue the purchase of approximately 38 acres from Mathy Construction. The land is currently adjacent to the Brokaw County Park property. The land has been surveyed and appraised at \$93,800.00. Mathy Construction has reviewed and accepted the Offer to Purchase at the appraised amount. Funding for the purchase will come from the County Park Land and Products account. The purchase of this land falls within the County’s Strategic Plan Objective 5.2 to acquire an average of 320 acres of land per year for the Marathon County Parks and Forests System. Questions were answered. **Motion** by Peckham, second by Maszk to recommend the purchase of 39.085 acres to the Environmental Advisory Committee, Human Resources and Finance Committee and Marathon County Board of Supervisors. Motion **carried** by voice vote, vote reflected as 5-0.

**6. Policy Issues for Discussion and Committee Determination for Consideration by Environmental Resources Committee - None**

**7. Educational Presentation/Outcome Monitoring Reports for Discussion**

A. Town of Rib Mountain Deer Population Update - Polley said the Town of Rib Mountain has taken the lead on putting together an educational campaign for their residents on why not to feed the deer and some options available for reducing the deer population. They also issued 20 in-town archery permits in which 13 were filled. The Town feels it was successful and plans on utilizing the same program next year. At this time there is no expectation of doing anything within Bluegill Park as it was decided that education would be the first step.

B. Park Update - B. Park Update – Big Eau Pleine Timber Sale, Nine Mile Maintenance/Events, Marathon Park Operations and Maintenance, Westside Master Plan, Sports Complex, Routine Operations/Programs - Big Eau Pleine: Timber sale is complete. Nine Mile: Grooming at Nine Mile (3” base currently), Winter Tri, Badger State Games and Winter Triathlon. Marathon Park: Ice operations are well underway, Created a great deal of ice for the CVB’s annual Pond Hockey tournament. With that created additional opportunities for outdoor ice skating – skating river, Eastgate Hall has been utilized on a regular basis for COVID testing. Westside Master Plan: Consultant has been hired and contract negotiations are near completion. Interviews with stakeholders will begin soon, Community outreach will be the next step. Sports Complex: Lot was plowed at the request of the Wausau Fire Department to do training (inter-departmental collaboration). Routine Operations/Programs: Snow Removal Operations, Firewood Processing, Urban forestry program: Regular tree maintenance, small pruning; Building and structure maintenance; Equipment maintenance and repair

**8. Announcements**

Seefeldt mentioned that after the election the Environmental Resource Committee may be moving their meetings to the second Tuesdays of the month. Park Commission meeting dates will be discussed after that.

A. Next Meeting Date & Time, Location–Tuesday, March 1, 2022 at 10:30am, 212 River Dr., Rm 5, Wausau WI 54403

C. Future Agenda Items –

**9. Adjourn – Motion** by Maszk, second by Wadinski to adjourn at 12:05pm. Motion **carried** by voice vote, vote reflected as 5-0.

**AGENDA SUMMARY**

**4A1. Discussion and Possible Action Approving Proposal by Lake Wausau Association for an ADA Kayak Launch at DC Everest Park**

The Lake Wausau Association (LWA) submitted a proposal to install an ADA kayak launch at DC Everest Park for public use. LWA and donors will fund the purchase of the kayak launch and donate it to the County upon installation. LWA is proposing the kayak launch be installed at the south end of the park in the area outlined in red in the map (attached to packet). LWA is requesting future annual removal and installation of the kayak launch be done by the Wausau & Marathon County Parks, Recreation, and Forestry Department after the initial installment, as well as be responsible for any future necessary maintenance and repairs. LWA is also requesting the County pave a sidewalk path directly to the kayak launch from the existing sidewalk path running parallel to the lake. LWA anticipates the ADA compliance kayak launch will cost approximately \$30,000 - \$35,000. Costs of paving a sidewalk and other future maintenance/repair costs are unknown. LWA's goal is to complete the installation of the kayak launch in late spring of 2022. LWA believes an ADA compliant kayak launch will enhance recreational values and opportunities on Lake Wausau for members and visitors of the community, including (but not limited to) those who are disabled, elderly, and beginners/learners of kayaking.

Staff supports this request to add a kayak launch to DC Everest Park. The department currently maintains the same kayak launch that is being proposed at Riverlife Park. Taking the launch in and out is not an easy task and will take staff time. It is anticipated that the launch in the DC Everest Park area will be easier to take in and out due to the low current in the area proposed. Due to the work load this year we cannot anticipate at this time when we would be able to install a connection from the trail to the launch however we can complete this request as time and staff allows.

If the Park Commission supports this request, consider approval contingent upon the LWA signing the attached memorandum of understanding.

**4A2. Discussion and Possible Action Determining Park Facility Roofing Color and Material**

The County parks currently have a number of buildings, and the roofs are traditionally red. The color of the current roofs are 'Cottage Red'. The department has 19 buildings that will need new roofs over the next few years. The roofs are prioritized high to low. As we work on the plans for the 2022 projects the department is finding it more difficult to acquire 'Cottage Red' shingles for our facilities. There were no cottage red shingles available in 2021, with a limited supply available as of now in 2022. The question we would like to pose for discussion is, "Is the roof color a critical component to the aesthetics and definition of our parks? Could we deviate from that color when necessary?" Furthermore, would the Commission be opposed to installing metal roofing material in lieu of asphalt shingles? The increased life span of metal roofing is desirable. Although the up-front cost of metal is sometimes two times more than asphalt, the life span is 3-5 times longer. There is one company that may have the cottage red shingles that could be contracted however this may complicate competitive quotes. Marathon Park cattle barns are scheduled to be completed this year utilizing a contractor. Another option is to defer roof maintenance until cottage red shingles are available. An example of the red roofing can be seen on the pictures of the hand pumps in the next discussion item.

The Park Commission is asked to provide staff with direction on what is preferred for park facility roof maintenance.

**4A3. Discussion and Possible Action Determining Replacement Options for Park Hand Pump Wells**

We currently have 9 hand pump style wells in our system that are at the end of serviceable life from a replacement parts standpoint. In many cases these hand pumps are the park's main source of potable water. We have a few options for the Park Commission to consider regarding these pumps. The options to consider include 1) Omit the well entirely, 2) Replace the well with new style of hand pump, 3) Replace some of the locations with a submersible well pump and drinking fountain/jug filler (power needed), or 4) some combination of the above listed options.

Similar to the roof material discussion, the Commission is asked to provide staff with direction on the repair and replacement of the hand pump wells.



Current Well



proposed alternate

**5B1. Discussion and Possible Action to Restructure 0.75 FTE Motorized Recreation Coordinator to 1.0 FTE Recreation Coordinator**

The current position of Motorized Recreation Coordinator is a 0.75 FTE and will be vacant as our current Coordinator has taken a full-time position. In assessing the tasks of this position and the needs within the department specifically with aquatic management it will provide efficiency if we can change the 0.75 FTE Motorized Recreation Coordinator position to a 1.0 FTE Recreation Coordinator that would oversee the motorized recreation program as well as aquatic programs. The seasons are opposite of each other, and grant management falls well within recreation program tasks. Having a position to manage the snowmobile and ATV program is required by the state of WI if snowmobile and ATV funds are distributed to clubs for trail maintenance and trail project. This position will be required to work more hours in Sept-March and less hours April-August.

In addition, our department is called the Wausau/Marathon County Parks, Recreation & Forestry Department. Recreation is a staple of what we do and for as long as we have documented the City/County have only employed ONE full time recreation professional. The current Recreation Superintendent is responsible for three aquatic centers (all rebuilt from basic pools to aquatic centers over the last 6 years), splash pad, playground programs, special events and the tennis program. The pool management alone takes most of this positions time leaving very little time for any other programming. It has been a goal of the County and City to expand recreation offerings to the community however this has not happened to the extent expected due to the time restraints of the single recreation staff.

A Recreation Coordinator would work under the direction of the Recreation Superintendent and would primarily be assigned to aquatics and motorized recreation. This position would train and supervise the staff of the three aquatic facilities, splash pad and water aerobics programs. They would also increase the aquatic programming offered year-round. Possibilities of additional year-round aquatic programming include fall and winter swimming lessons utilizing the UWSP-Wausau pool or NCHC pool. This position would work with members of the 29 snowmobile clubs and serve as the contact for the WIDNR liaison. The Recreation Superintendent would still ultimately oversee the aquatic operations but would gain time to increase recreation programs and special events year-round. The possibilities to add more are endless. More programming also increases the revenue generated for both the City and the County.

There is no proposed change to the 2022 or 2023 budget. Funding will be available in the 2022 budget for the additional 0.25 FTE portion of this position due to the vacancy of 2 FTE positions at the beginning of this year. In 2023 the additional 0.25 FTE will be funded through the reduction of a part-time aquatic position and increased revenue.

The Park Commission is asked to approve and make a recommendation to the Environmental Advisory Committee to change the 0.75 FTE Motorized Recreation Coordinator to a 1.0 FTE Recreation Coordinator.

7A. Park Updates

**Big Eau Pleine:**

Firewood processing at Big Eau Pleine is over half complete. We have processed the 75 cords for the year and are now working on processing a new delivery of firewood. We anticipate 125+ cords to be processed within the next month in preparation for camping season.

**People's Sport Complex:**

MC United has grown in numbers again this year. Due to this growth, overflow to Brockmeyer and Airport Parks is now a regular occurrence.

**Nine Mile:**

Skiing and snowshoeing is consistent, even with a minimal snow base.

**Mountain Bay Trail:**

Crews have been working on trail maintenance, predominantly trees and branches contacting the snowmobile groomers.

**Marathon Park:**

Tube (radiant) heaters in rink #1 have been installed and are operational. This was an excellent change to the rink with positive feedback from users.

Painting in the lobby and hallway of MPB is nearing completion.

Rink #2 ice removal begins on 2/27, Rink #1 ice removal begins on 3/13

Boats and campers can be picked up starting 3/17

**Routine Operations/Programs:**

Snow Removal Operations

Firewood Processing

Urban forestry program: Regular tree maintenance, small pruning

Building and structure maintenance.

Equipment maintenance and repair



## Request for Additional Services

Purpose: The Wausau & Marathon County Parks, Recreation, and Forestry Department has a desire to always provide high quality recreational services and facilities. With restricted financial and personnel resources the Department needs a process to evaluate requests for additional services. Additional services being defined as additions to programs and facilities or new programs and facilities.

In order to fully evaluate and stimulate thought on the complete aspects of additional services, please provide the Department with a request that includes the following (all items may not pertain and may not be known by requestor):

- Please describe program or facility where additional services are being requested.

The Lake Wausau Association (LWA) intends to purchase and install an ADA compliant kayak launch at the D.C. Everest Park for public use. LWA is proposing the kayak launch be installed at the south end of the Park in the area outlined in red in the map below:



- Please describe additional services/facility being requested.

LWA is requesting future annual removal and installation of the kayak launch be done by The Wausau & Marathon County Parks, Recreation, and Forestry Department ("County/City") after the initial installment, as well as be responsible for any future necessary maintenance and repairs.

- Why do you think this additional service/facility is needed?

LWA believes an ADA compliant kayak launch will enhance recreational values and opportunities on Lake Wausau for members and visitors of the community, including (but not limited to) those who are disabled, elderly, and beginners/learners of kayaking.

- What exactly is being asked of the Department (funding, maintenance, construction)?

In addition to the annual removal and installation, and future maintenance and repairs as requested above, LWA is also requesting the County/City pave a sidewalk path directly to the kayak launch from the existing sidewalk path running parallel to the lake (as depicted in the above photo).

- What are the total costs for the additional services/facilities (not only initial costs but future costs)?

LWA anticipates the ADA compliance kayak launch will cost approximately \$30,000 - \$35,000. Costs of paving a sidewalk and other future maintenance/repair costs are unknown.

- How would it be funded (what is the County/City being asked to contribute, what is the group willing to contribute, grants, donations, etc.)?

LWA and donors will fund the purchase of the kayak launch and donate it to the County/City upon installation. The Count/City would then be responsible for maintaining the kayak launch.

- Who will provide maintenance in the future (will it be turned over to the Department upon completion, will there be maintenance funds put aside, group to provide some maintenance, who repairs damage, etc.)?

As described above. The County/City would be responsible for any maintenance after the initial installation, as well as any damage repairs that may be needed from public use.

- What are the expectations of the County/City once it is complete?

As described above. The County/City would be responsible for any maintenance after the initial installation, as well as any damage repairs that may be needed from public use.

- What is the timeline for completion?

LWA's goal is to complete installation of the kayak launch in late spring of 2022.



AGREEMENT BETWEEN WAUSAU/MARATHON COUNTY  
PARKS, RECREATION AND FORESTRY DEPARTMENT  
AND THE LAKE WAUSAU ASSOCIATION

THIS AGREEMENT made this \_\_\_\_\_ day of \_\_\_\_\_, 2022, by and between the Wausau/Marathon County Parks, Recreation and Forestry Department, a department of Marathon County of the State of Wisconsin, hereinafter referred to as “DEPARTMENT” and the Lake Wausau Association, hereinafter referred to as “ASSOCIATION”.

WHEREAS, Marathon County owns property known as DC Everest County Park that is open to the public for recreation activities and contains a public boat launch; and

WHEREAS, the ASSOCIATION wishes to install an ADA kayak launch west of the boat launch; and

WHEREAS, the ASSOCIATION’s intent is to enhance the recreational values and opportunities on Lake Wausau for members and visitors of the community, including (but not limited to) those who are disabled, elderly, and beginners/learners of kayaking; and

WHEREAS, the ASSOCIATION wishes to fully fund the improvement at DC Everest Park and donate it back to the County.

NOW, THEREFORE, the parties hereto agree as follows:

1. Marathon County, by its Park Commission shall approve the final plans for the project prior to commencement of any work on the project by the ASSOCIATION, its contractors and/or subcontractors, or volunteers.
2. The ASSOCIATION hereby agrees to totally fund, design and install the ADA kayak launch at DC Everest Park, as further described in the attached Request for Additional Services.
3. Commitments for total cash funding or in-kind donations of materials and labor must be obtained prior to the commencement of any work. Marathon County will not be liable for any costs, of any type whatsoever, for this project other than those described herein.
4. The ASSOCIATION shall donate the launch to the DEPARTMENT upon completion of the project and it shall be owned by Marathon County.
5. The DEPARTMENT will provide routine maintenance of the launch, including minor repairs and removing the launch at the end of the season and installing the launch at the beginning of each season.
6. The DEPARTMENT will install a sidewalk from the existing trail to the launch as staff time and materials become available following the installation of the launch.
7. The DEPARTMENT does not agree to fund and complete any major repairs to the launch that are due to any unforeseen event including weather, vandalism or any other, now and into the future.

8. The DEPARTMENT reserves the right to remove the launch at any time, if the launch becomes damaged beyond repair, is no longer visibly pleasing, becomes a safety hazard within the park/lake, or funding is not available from the County, the ASSOCIATION or other means to repair or maintain. The determination of whether the launch is a safety hazard is a determination left to the discretion of DEPARTMENT.
9. The ASSOCIATION shall not commence work under this agreement until all insurance required by Marathon County is obtained, and such insurance has been approved by the County, nor shall the ASSOCIATION allow any contractor or subcontractor to commence work until all similar insurance requirements have been obtained and approved.
10. The DEPARTMENT agrees to provide ASSOCIATION and its contractors access to the project location identified in the Request for Additional Services for the purpose of installation of the launch. ASSOCIATION shall notify DEPARTMENT at least two weeks in advance of the contemplated commencement of installation, and the parties shall mutually agree upon conditions of access to the location.
11. ASSOCIATION agrees to release, indemnify, defend, and hold harmless Marathon County and DEPARTMENT, its officials, officers, employees and agents from and against all judgments, damages, penalties, losses, costs, claims, expenses, suits, demands, debts, actions and/or causes of action of any type or nature whatsoever, including actual and reasonable attorney's fees, which may be sustained or to which they may be exposed, directly or indirectly, by reason of personal injury, death, property damage, or other liability, alleged or proven, which is determined to be caused by the negligent or intentional acts or omissions of ASSOCIATION's officers, officials, employees, agents or assigns.
12. ASSOCIATION agrees that this agreement is contingent upon approval of this donation, under the terms herein provided, by the appropriate Marathon County Board committees. In the event approval of this donation is withheld, this agreement shall be null and void.

IN WITNESS WHEREOF, this agreement has been duly executed the day and year first written above.

**LAKE WAUSAU ASSOCIATION**

**PARKS, RECREATION AND FORESTRY  
DEPARTMENT**

\_\_\_\_\_  
Name:

\_\_\_\_\_  
Jamie Polley, Director



**EZ Launch<sup>®</sup>  
Systems**



**EZ Launch**

ACCESSIBLE TRANSFER SYSTEM

KAYAKS & CANOES



1-800-834-8168



[www.ez-dock.com](http://www.ez-dock.com)





# Launching and docking kayaks or canoes has never been easier.

The EZ Launch<sup>®</sup> System's innovative one-piece design enables people of all experience and ability levels to stay dry and stable while entering, exiting and launching kayaks and canoes. With its ability to connect with standard and low profile EZ Dock sections or any other traditional dock, the EZ Kayak Launch can be installed virtually anywhere.



## Universal Accessibility

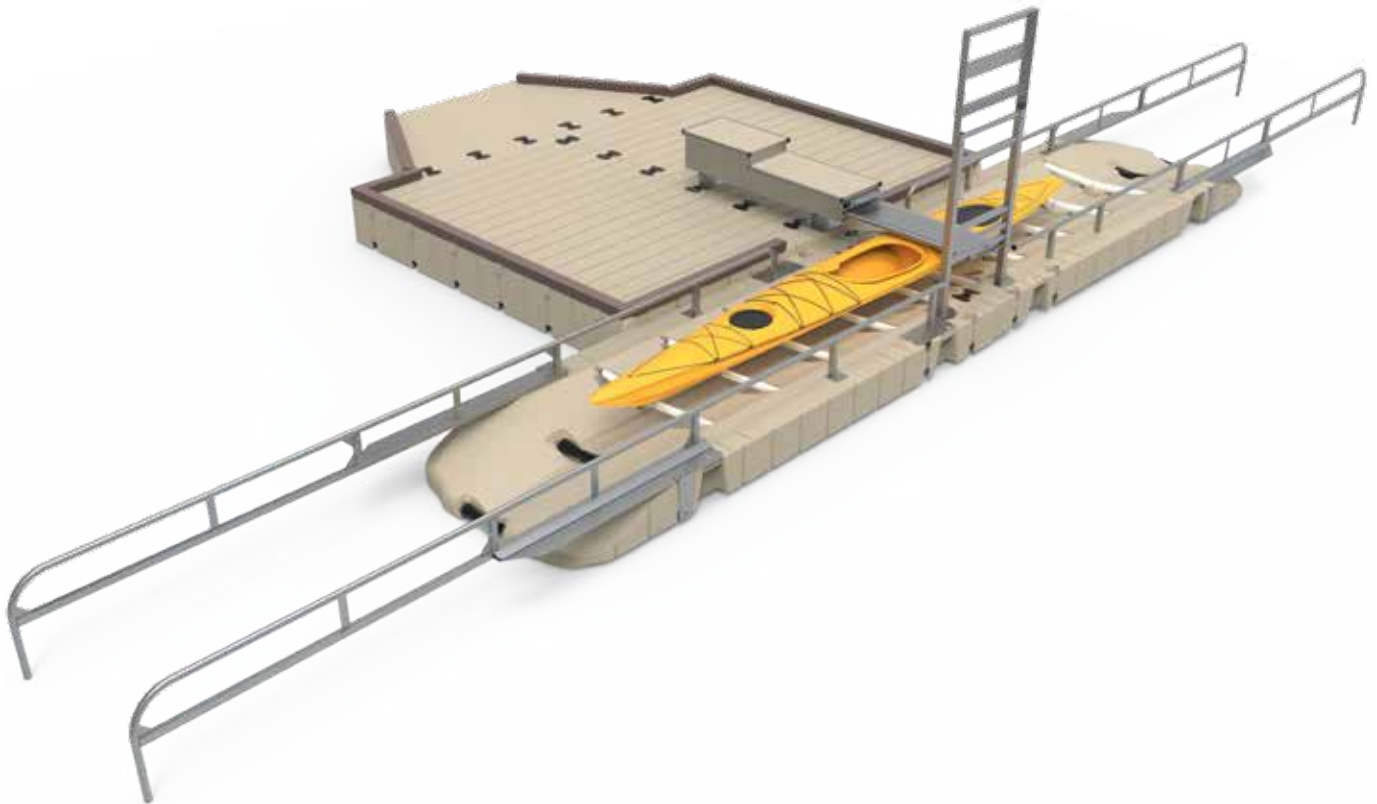
A first in the industry, the EZ Launch Accessible Transfer System provides individuals with disabilities accessibility that exceeds the minimum requirements of the Americans with Disabilities Act (ADA).



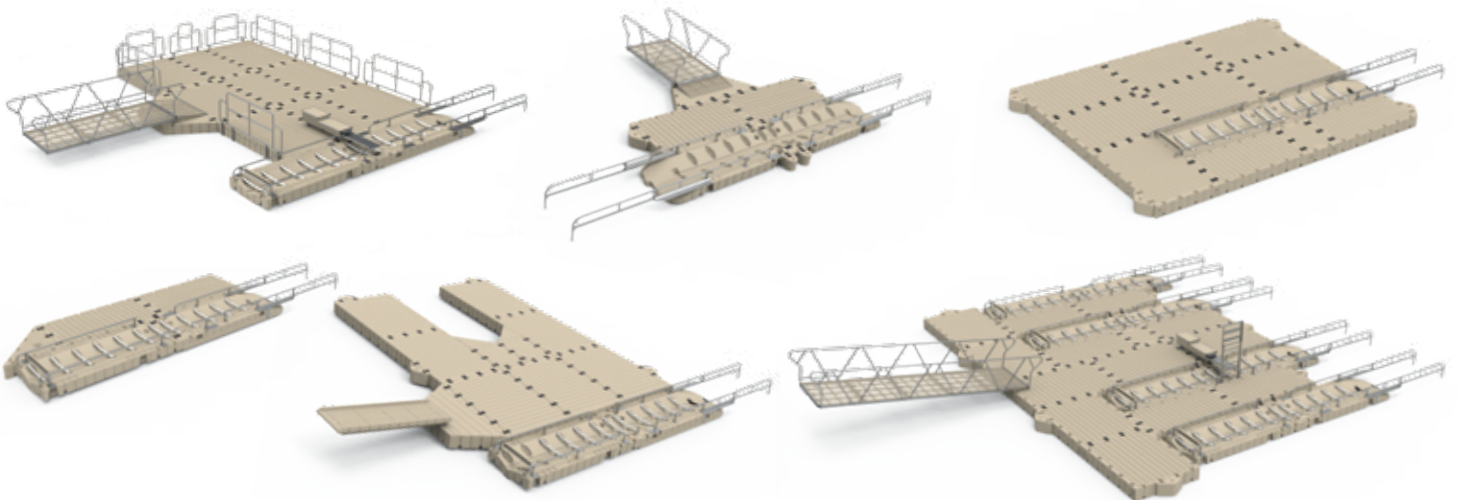
Engineered to safely get in and out of your kayak or canoe.

# EZ Launch<sup>®</sup> System

Our standard EZ Launch unit can be custom designed in hundreds of configurations to fit any waterfront, including versions with one-way, drive-through, ADA-compliant and multi-unit launches.



EZ Launch can be customized in multiple configurations designed to fit your waterfront — contact your local EZ Dock sales representative to create your own.







## Greater stability for any ability.

EZ Launch helps the Travis Mills Foundation get veterans and families on the water.



**Travis Mills**  
*Retired Army Staff  
Sergeant of the 82nd  
Airborne Division*

When the Travis Mills Foundation, a nonprofit organization that benefits and assists combat-injured veterans, needed help equipping its handicapped-accessible lake lodge in Rome, Maine, EZ Dock was honored to partner with them.

“EZ Dock stepped up, saw our project and understood we needed something stable,” explained Retired United States Army Staff Sergeant Travis Mills, who formed the foundation. Sgt. Mills is also a quadruple amputee who survived an IED explosion while serving with the 82nd Airborne in Afghanistan.

“It’s just a wonderful system that helps our families get in and out of the water quick and easy and makes them feel more independent and confident in themselves in their abilities,” Sgt. Mills added.

To see the EZ Launch in action, visit [ez-dock.com/viewEZLaunch](http://ez-dock.com/viewEZLaunch)



“We had 57 veterans and their families come this summer and every single family was able to get out in the water. Using a system like an EZ Launch, it makes sure that we take away some of those barriers that veterans face, especially if they’re facing some kind of disability.”

**Brandy Cain**  
*Marketing and Donor Relations Director, Travis Mills Foundation*





The EZ Launch system is the perfect solution for all abilities and experience levels. It's designed to help anyone transfer into a watercraft independently and securely and enjoy a stable launch regardless of waves caused by tides, wind or boat wakes.

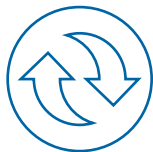
With its modular design, EZ Launch is easy to install and integrates seamlessly into existing EZ Dock systems or traditional dock designs.

## Why EZ Dock is the best investment you will ever make in your waterfront property.



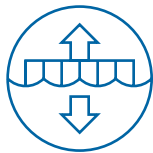
### MAINTENANCE-FREE & BAREFOOT FRIENDLY

- EZ Dock's polyethylene docks are durable and slip resistant
- Won't splinter or rot, never needs to be painted
- Cleans easily with soap and water



### ADAPTABLE DESIGN

- Unique design delivers outstanding load capacity, functionality, and safety
- Variety of dock sections, boat/PWC lifts, and kayak launches
- Easily customizable design to make your perfect waterfront retreat



### FLEXIBLE FLOTATION TECHNOLOGY

- Flotation chambers are constructed for optimal strength and structural integrity
- Designed to provide additional stability on the water
- Dock sections adapt easily to changing water conditions and levels



### INNOVATIVE COUPLING

- Made of recycled materials
- Nuts and bolts made of heavy duty, rust resistant composite
- Strength and durability even in the harshest weather conditions



EZ Dock, Inc  
878 HWY 60  
Monett, MO 65708  
1-417-235-2223 1-800-654-8168

For a complete list of products, visit [ez-dock.com](http://ez-dock.com)

EZ Dock may introduce new colors, products, accessories and options throughout the year. Specifications and products listed are subject to change without notice. Some products may be shown with additional or optional equipment not available through EZ Dock. Specifications may vary for international shipments. Please check with your local dealer for more information. EZ Dock is a product of the U.S.A.

© 2018 EZ Dock, Inc. All rights reserved.



# Roof Work

## Pleasant View

2020 Rating: A+

2021 Rating: 1

Total Area: 774 ft<sup>2</sup>

Ft of ridge cap: 26'

Ft of Starter: 60'

Priority Rank: A+++

Work Needed: Roof X Shingles and Metal

Current Color: Cottage Red

Fascia X Wood

Soffit X Wood

Notes: Roof Rebuild...BIG JOB. 2 Techs, 2 Maintainers

## Junction Building

2020 Rating: B

2021 Rating: 1

Total Area: 5610 ft<sup>2</sup>

Ft of ridge cap: 288'

Ft of Starter: 164'

Priority Rank: A+

Work Needed: Roof X

Current Color: Cottage Red

Fascia \_\_\_\_\_

Soffit \_\_\_\_\_

Notes: Leaking into building

## Cattle Barn #2

2020 Rating:

2021 Rating: 1

Total Area: 6000 ft<sup>2</sup>

Ft of ridge cap: 200'

Ft of Starter: 200'

Priority Rank: A+

Work Needed: Roof X

Current Color: Cottage Red

Fascia X Rotted

Soffit X Rotted

Notes:

## Forest Park

2020 Rating:

2021 Rating: 2

Total Area: 520 ft<sup>2</sup>

Ft of ridge cap: 26'

Ft of Starter: 52'

Priority Rank: A

Work Needed: Roof X Shingles

Current Color: Cottage Red

Fascia \_\_\_\_\_

Soffit \_\_\_\_\_

Notes: Older roof, may have rotted roof boards

**Marathon Park – Tourist Cabin****2020 Rating:****2021 Rating: 2**Total Area: 2700 ft<sup>2</sup>

Ft of ridge cap: 68'

Ft of Starter: 124'

Priority Rank: A

Work Needed: Roof X

Current Color: Cottage Red

Fascia X RottedSoffit X

Notes: Many shingles missing, curled up, moss. Probable wood repair under shingling

**BEP South Unit - Shelter****2020 Rating:****2021 Rating: 2**Total Area: 720 ft<sup>2</sup>

Ft of ridge cap: 30'

Ft of Starter: 60'

Priority Rank: A

Work Needed: Roof X Shingles

Current Color: Cottage Red

Fascia \_\_\_\_\_

Soffit \_\_\_\_\_

Notes: Rotted roof, holes, sagging sheeting, moss

**Norrie Well****2020 Rating:****2021 Rating: 2**Total Area: 210 ft<sup>2</sup>

Ft of ridge cap: 15'

Ft of Starter: 30'

Priority Rank: A

Work Needed: Roof X

Current Color: Cottage Red

Fascia \_\_\_\_\_

Soffit \_\_\_\_\_

Notes: South side shingles all worn off

**Amco Shelter****2020 Rating: B+****2021 Rating: 2**Total Area: 780 ft<sup>2</sup>

Ft of ridge cap: 30'

Ft of Starter: 60'

Priority Rank: A-

Work Needed: Roof X

Current Color: Cottage Red

Fascia \_\_\_\_\_

Soffit \_\_\_\_\_

Notes:

**Bluegill – North Shelter****2020 Rating:** B-**2021 Rating:** 2Total Area: 780 ft<sup>2</sup>

Ft of ridge cap: 30'      Ft of Starter: 60'

Priority Rank: A-

Work Needed: Roof   X  

Current Color: Cottage Red

Fascia       Soffit       

Notes:

**Big Rapids****2020 Rating:****2021 Rating:** 2Total Area: 884 ft<sup>2</sup>

Ft of ridge cap: 34'      Ft of Starter: 68'

Priority Rank: A-

Work Needed: Roof   X   Shingles

Current Color: Cottage Red

Fascia   X  Soffit       

Notes: Moss, shingle deteriorating, broken off

**Cattle Barn #1****2020 Rating:****2021 Rating:** 3Total Area: 6000 ft<sup>2</sup>

Ft of ridge cap: 200'      Ft of Starter: 200'

Priority Rank: B+

Work Needed: Roof: X

Current Color: Cottage Red

Fascia: X Rotted

Soffit:

Notes: Shingles are coming off

**BEP South Unit – Well****2020 Rating:****2021 Rating:** 3Total Area: 256 ft<sup>2</sup>

Ft of ridge cap: 16'      Ft of Starter: 32'

Priority Rank: B+

Work Needed: Roof   X  

Current Color: Cottage Red

Fascia   X   rottedSoffit       

Notes: Moss, shingles missing, fascia rotting

**Rib Falls****2020 Rating: B****2021 Rating: 3**Total Area: 720 ft<sup>2</sup>

Ft of ridge cap: 30'

Ft of Starter: 60'

Priority Rank: B+

Work Needed: Roof  X 

Current Color: Cottage Red

Fascia \_\_\_\_\_

Soffit \_\_\_\_\_

Notes:

**Mission Lake Shelter****2020 Rating:****2021 Rating: 3**Total Area: 720 ft<sup>2</sup>

Ft of ridge cap: 30'

Ft of Starter: 60'

Priority Rank: B+

Work Needed: Roof  X 

Current Color: Cottage Red

Fascia \_\_\_\_\_

Soffit \_\_\_\_\_

Notes: Missing shingles, curled

**East Gate Hall – Stone Wing****2020 Rating: B****2021 Rating: 3**Total Area: 3224 ft<sup>2</sup>

Ft of ridge cap:

Ft of Starter:

Priority Rank: B

Work Needed: Roof: Rolled Roofing

Current Color: White

Fascia: Wood

Soffit: Wood

Notes: Som fascia is rotted...needs replacing. Painting needed...bare wood.

**BEP – West Unit (Shelter 21)****2020 Rating:****2021 Rating: 3**Total Area: 816 ft<sup>2</sup>

Ft of ridge cap: 34'

Ft of Starter: 68'

Priority Rank: B

Work Needed: Roof  X  Shingles

Current Color: Cottage Red

Fascia \_\_\_\_\_

Soffit \_\_\_\_\_

Notes:



**Reservoir Park**

**2020 Rating:**

**2021 Rating: 3**

Total Area: 744 ft<sup>2</sup>

Ft of ridge cap: 31'

Ft of Starter: 60'

Priority Rank: B

Work Needed: Roof  X  Shingles

Current Color: Cottage Red

Fascia  X  rotted

Soffit \_\_\_\_\_

Notes:

**BEP Group Campground Shelter**

**2020 Rating:**

**2021 Rating: 3**

Total Area: 820 ft<sup>2</sup>

Ft of ridge cap: 34'

Ft of Starter: 68'

Priority Rank: B

Work Needed: Roof  X

Current Color: Cottage Red

Fascia \_\_\_\_\_

Soffit \_\_\_\_\_

Notes: Missing shingles

**Sunnyvale Lake**

**2020 Rating:**

**2021 Rating: 4**

Total Area:

Ft of ridge cap:

Ft of Starter:

Priority Rank:

Work Needed: Roof \_\_\_\_\_

Current Color:

Fascia \_\_\_\_\_

Soffit \_\_\_\_\_

Notes:

**Ratings**

**1** - Very High Priority

**2** – High Priority

**3** – Medium Priority

**4** – Lower Priority

# CLOSE OUT TIMBER SALES

Sale 706-21

FLANNEL FLEET LOGGING

	<b>Estimated</b>	<b>Cut</b>	
Aspen Pulp	310 Tons	247.66 Tons	Aspen Pulp
Basswood Pulp	420 Tons	580.31 Tons	Basswood Pulp
Hickory Bitternut Pulp	230 Tons	233.93 Tons	Hickory Bitternut Pulp
Mixed Hardwood Pulp	800 Tons	1237.29 Tons	Mixed Hardwood Pulp
	<b>1760 Tons</b>	<b>2299.19 Total Tons Cut</b>	
Ash Sawlogs	10 MBF	26.50 MBF	Ash Sawlogs
Basswood Sawlogs	30 MBF	32.08 MBF	Basswood Sawlogs
Hickory Sawlogs	6 MBF	12.03 MBF	Hickory Sawlogs
Hard Maple Sawlogs	6 MBF	16.18 MBF	Hard Maple Sawlogs
Red Maple Sawlogs	3 MBF	6.89 MBF	Red Maple Sawlogs
	<b>55 MBF</b>	<b>93.68 Total MBF Cut</b>	

Total Revenue for Sale: **\$42,432.68**

Balance: \$2,432.68

Bond Amount: \$7,105.00

Bond Type: Letter of Credit

Recommendation: **Close out sale and return Letter of Credit following final payment of \$2,432.68**

**MARATHON COUNTY- BIG EAU PLEINE PARK  
TIMBER SALE CLOSING AND CONTRACT COMPLIANCE**

Sale Closure

Timber Sale Inspection: J. Tucker

Date: 02/08/2022

Contract Number: 706-21

Sale Name: Restoration 1

Contractor: Flannel Fleet Logging, LLC.

Location of Sale: Sections 7 & 18, T.26N.-R.06E. (Town of Bergen)

Start Date: 12/01/2021

Completed Date: 02/04/2022

% Completed: 100%

	Always meets Standards	Meets Standards	Sometimes meets Standards	Never meets Standards	Explain
Cutting Completed	X				
Hauling Completed/Hot Logging	X				
Hauling Legal Weights	X				
Stump Height Acceptable	X				
Utilization	X				
Residual Damage	X				
Slash Treatment	X				
Trees Cut/Tops Over Line	X				
Protecting Survey Monuments	X				
Littering/Garbage	X				
Landing Maintenance	X				
Excessive Road/Trail Damage		X			Damage to mountain bike trail
Timely Payments/Mill Scale	X				
Excessive Rutting Damage	X				
BMP's	X				

Overall Job  **Excellent**     Very Good     Good     Fair     Poor

General Remarks: Jason and Sean did an excellent job with this park sale as there were many requirements. They took great care to minimize damage to campsites and remove tops from the campground. Tops were kept away from the mountain bike trail, allowing for fat-tire bike trail grooming to occur shortly after the sale was completed. Some portions of the bike trail were damaged, as several warm December days lead to rapid snowmelt and the irregular shape of the trail made it difficult for equipment operators to follow. However, the crew temporarily halted forwarding to wait until the ground froze. Stumps heights and slash heights were great and excellent utilization/sorting occurred. Thanks for the job well done!

Inspected by: *J. A. Tucker*

Date: 02/08/2022

APPENDIX B  
NEW OR EXPANDED POSITION REQUEST

I. GENERAL INFORMATION

Department: Parks, Recreation & Forestry \_\_\_\_\_ Date: February 24, 2022 \_\_\_\_\_

Position Requested: ~~Motorized~~ Recreation Coordinator \_\_\_\_\_ FT  PT  FTE 1.0 %  
(If unsure of classification, indicate "To be determined") Number of Positions: 1 \_\_\_\_\_

Division Position Will Be Assigned To: Recreation Superintendent \_\_\_\_\_  
(Indicate NA if not applicable)

Projected Start Date of Position: April 1, 2022 \_\_\_\_\_ Priority Number of This Position: \_\_\_\_\_  
If you are requesting more than one position, prioritize all your requests and indicate the priority number of position.

II. FULL EXPLANATION OF NEED FOR POSITION

A. Is this position request compatible with the County's mission statement?

Yes the position provides opportunities to Marathon County residents to engage in outdoor recreation enhancing their quality of life. This position would enhance the current 0.75 FTE Motorized Recreation Coordinator to include a year round focus on recreation. It has been a goal of Administration to increase the recreation offerings of the County and City to increase the revenue generated from recreation programs. Currently the summer workload of the Recreation Superintendent (funded 80% City, 20% County) does not allow for that enhancement. It is proposed to add a Recreation Coordinator that would report to the Superintendent whose main responsibilities would be to manage and operate the pools, splash pad and all aquatic programs freeing time for the Recreation Superintendent to focus on enhanced programming during the summer.

This position will also manage the snowmobile and ATV grant programs predominately during the winter season. The user groups this position serves also manages and maintains miles of trails for residents and visitors to use allowing them to visit different areas of the County. Managing the snowmobile and ATV programs contributes to making Marathon County the healthiest and most prosperous county.

B. What is your department's mission statement and how does position support this mission and/or department strategic plan?

Our mission statement is to adaptively manage our park and forest lands for natural resource sustainability while providing healthy recreational opportunities and unique experiences making Marathon County the preferred place to live, work and play. Recreation programming and motorized recreation can offer fun and unique recreational experiences. There are very few organizations within the City that offer family recreation. Enhancing these offering through the County and City programming will provide youth, adults and families healthy recreational opportunities. In addition, managing the 29 snowmobile clubs to ensure they get funding to provide trails that allow users to have these recreational experiences is needed to ensure the groups are managing and maintaining the trails properly, providing safe trails to ride and enhancing the natural resources of the county.

C. Indicate reasons for asking for position including purpose of position, applicable workload data and trends, etc. **plus attach relevant supporting data.** If more than one position of the same classification is being requested, also justify the number requested.

The current position of Motorized Recreation Coordinator is a 0.75 FTE and will be vacant. In assessing the tasks of this position and the needs within the department specifically with aquatic management it will provide efficiency if we can change the 0.75 FTE Motorized Recreation Coordinator position to a 1.0 FTE Recreation Coordinator that would oversee the motorized recreation program as well as aquatic

programs. The seasons are opposite of each other, and grant management falls well within recreation program tasks. Having a position to manage the snowmobile and ATV program is required by the state of WI if snowmobile and ATV funds are distributed to clubs for trail maintenance and trail project. This position will be required to work more hours in Sept-March and less hours April-August.

In addition, our department is called the Wausau/Marathon County Parks, Recreation & Forestry Department. Recreation is a staple of what we do and for as long as we have documented the City/County have only employed ONE full time recreation professional. The current Recreation Superintendent is responsible for three aquatic centers (all rebuilt from basic pools to aquatic centers over the last 6 years), splash pad, playground programs, special events and the tennis program. The pool management alone takes most of this positions time leaving very little time for any other programming. It has been a goal of the County and City to expand recreation offerings to the community however this has not happened to the extent expected due to the time restraints of the single recreation staff.

A Recreation Coordinator would work under the direction of the Recreation Superintendent and would primarily be assigned to aquatics and motorized recreation. This position would train and supervise the staff of the three aquatic facilities, splash pad and water aerobics programs. They would also increase the aquatic programming offered year round. Possibilities of additional year round aquatic programming include fall and winter swimming lessons utilizing the UWSP-Wausau pool or NCHC pool. This position would work with members of the 29 snowmobile clubs and serve as the contact for the WIDNR liaison. The Recreation Superintendent would still ultimately oversee the aquatic operations but would gain time to increase recreation programs and special events year round. The possibilities to add more are endless. More programming also increases the revenue generated for both the City and the County.

- D. What benefit will the position provide to the County? How does the position improve/enhance customer service and/or address community needs?

This position will fill the requirement of the WI DNR to have a manager of the County's snowmobile and ATV programs in order for the clubs to receive state funding. This position will work closely with the groups to ensure all groups receive the same information, the trails are managed properly and the trails are safe for visitors.

This position will benefit the County/City by increasing program revenue through programming that this position develops and increased programming and events by the Recreation Superintendent. In our experience our community is looking for activities and events to participate in. There is demand for youth, adult, senior and family programming from introductory sports to arts and craft. The programs that we develop will be to meet the needs of the community. We will not offer or continue to offer programs that the community is not interested in.

- E. Indicate any alternatives to creating this position that were considered and why you still chose to request the position?

The alternative will be to continue to operate as we do today. The 0.75 FTE Motorized Recreation Coordinator position will be posted. The Recreation Superintendent will continue to establish the programs and balance their time between the demands of the pools and the programs that can be offered effectively. We will continue to hire a student intern to assist the Recreation Superintendent each year and utilize seasonal staff.

- F. What will be the effect if the proposed position is not created?

The department will continue to try to increase programming with the staff and resources available.

- G. What criteria will you use to monitor the effectiveness and performance of the position. (Increasing revenues, improved customer service, decreasing costs, enhancing services, etc?)

This position is partially funding by the grants they manage. The amount of grant funding received, the number of projects completed and input from the clubs will indicate the effectiveness and performance of this position. The effectiveness of this position will also be determined by the number of successful programs offered and increased program revenue. We do understand that programs have to begin somewhere and some may be successful, some may fail and some have to be revamped.

### III. SPECIFIC DUTIES OF NEW POSITION

- A. List the specific duties position will perform plus the approximate percentage of time to be spent on each duty.
- Administers and coordinates the maintenance and development of snowmobile and all-terrain vehicle (ATV) trails; prepares grant applications and reimbursement requests for trail maintenance and development projects; updates and prepares maps of snowmobile and ATV trails. 30%
  - Provides assistance to snowmobile and ATV clubs on State requirements for the maintenance and development of snowmobile and ATV trails; assists snowmobile and ATV clubs with landowner trail issues. 7%
  - Plans, coordinates, supervises, implements, and evaluates recreation programs, classes, and events. 25%
  - Interviews, hires, trains, assigns and reviews work, schedules and approves time off for recreation program seasonal employees; acts on problems and concerns; identifies need for additional staff and completes corresponding job descriptions. 15%
  - Coordinates facility scheduling, setup and services for recreation programs, classes, and events. 5%
  - Investigates complaints and works with the appropriate snowmobile or ATV club to resolve problems; conducts inspections to ensure trails, signing, and trail infrastructure are in compliance with State and local regulations and maintained to DNR standards. 5%
  - Promotes trail openings and closings in news release and interviews with local media; updates the County website with trail condition reports as necessary. 2%
  - Obtains supplies and equipment necessary to department operations. 2%
  - Reports trail hazards and maintenance needs to the appropriate club for repairs or attention. 2%
  - Responds to questions and provides miscellaneous information on snowmobile and ATV related inquiries. 2%
  - Maintains knowledge of current recreational trends, community needs and desires, recreation administration principles and techniques, and safety standards regarding recreation. Researches future recreation needs and opportunities. 2%
  - Develops proposals for modifying existing programs and events and creating new. Investigates costs and purchases materials and supplies for recreation programs, classes, and events. 3%
- B. Could another County department use the expertise of this position? OR could you use the expertise of another department to meet your needs? Why or why not?

This position will have expertise in managing state grants and could be used as a resource to other departments. This position will coordinate programs and special events with other department such as, Hunter Safety Classes with the Sheriff's department, trail tales with the Library, etc. however another department may not specifically need the expertise of this position

The only other department that could possibly assist with the requirement of this position would be the Sherriff's department however they do not have the staff to assist at this time.

- C. If the work is currently being done by the County, how is it being accomplished (contract basis, temporary help, current employee, etc.)? Why is this arrangement no longer acceptable?

The position of Motorized Recreation Coordinator is currently a 0.75 FTE position and is a position required by the state of WI if snowmobile and ATV funds are distributed to clubs for trial maintenance and trail project. This position will be required to work more hours in Sept-March and less hours April-August.

As mentioned in item II B, the current Recreation Superintendent is responsible for three aquatic centers (all rebuilt from basic pools to aquatic centers over the last 6 years), splash pad, playground programs, special events and the tennis program. The pool management alone takes most of this positions time leaving very little time for any other programming. It has been a goal of the County and City to expand recreation offerings to the community however this has not happened to the extent expected due to the

time restraints of the single recreation staff.

A Recreation Coordinator would continue the work of the Motorized Recreation Coordinator as well as assist the department with much needed attention to recreation working under the direction of the Recreation Superintendent with the primary task of aquatics. This position would train and supervise the staff of the three aquatic facilities, splash pad and water aerobics programs. They would also increase the aquatic programming offered year round. More programming also increases the revenue generated for both the City and the County.

The expectation of our department is to increase programming and continue to operate and maintain more and more facilities and programs. The current staffing is not adequate to meet these expectations.

#### IV. POSITION COSTS AND FUNDING SOURCES

- A. What is the anticipated total cost of this position? (Include salary; benefits; office space, remodeling, furniture, and equipment; travel; and other applicable costs.)

\$79,203 (assuming family benefits) is the total cost of the position. Currently \$63,532 is budget for 0.75 FTE

Increase = \$15,671

- B. Explain specifically how position will be funded. (Funding of new .25 FTE portion, full position will be 35% grant, 50% County Tax Levy, 15% City Levy)

Amount of County tax levy: \$3,918 % of total costs: 25 %                     

Amount of any outside funding: \$11,753 % of total costs: 75 %                       
**Funding in 2022 available from current vacant positions**

Source of outside funding: State Grants, City General Fund

Length of outside funding: Annual

Likelihood of funding renewal: Guaranteed as long as the state funds snowmobile and ATV programs

Would this outside funding be used to offset the levy if not used for this position? No                     

- B. Will the proposed position allow your department to increase revenues or decrease expenditures beyond the cost of the position? If yes, how?

The proposed position will most likely not increase revenue to decrease expenditures beyond the cost of the position the first few years however over time this position should be able to continue to narrow the gap and increase more and more revenue. The amount of grant funding could be increased to offset levy expenses.

- C. Does the proposed position provide preventive services that will lead to cost avoidance or more extensive services in the future? OR Can the proposed position be justified as an investment with future benefits to the County greater than the cost of the position? If yes, how?

Yes, the ability to manage the snowmobile and ATV funds that pay to keep our trails maintained and available to users ensures the clubs will provide that work for the county. If the clubs did not receive the state funding the county would not have snowmobile or ATV trails or it would be the county expenses paying for the trails and trail maintenance. Also, the ability to increase programming will provide more services to the community and increase revenue. Investing in this position is an investment into the Parks, Recreation & Forestry Department with the potential of covering the cost of the position or a portion of the position.

- D. Can the position costs be offset by eliminating or reducing a lower priority function? If yes, explain.

No

#### V. COMMITTEE OF JURISDICTION

What is the recommendation of the committee of jurisdiction? Presented to Parks Commission and Environmental Resources Committee on Tuesday, March 1 and Parks and Recreation Committee Monday, March 7.

NOTE: An updated or new Position Description Questionnaire (PDQ) may be necessary to complete the job evaluation process.

---

Signature of Supervisor/Manager Completing Request

---

Date

---

Department Head Signature

---

Date