



MARATHON COUNTY PARK COMMISSION

AGENDA

2ND AMENDED

Date and Time of Meeting: Tuesday, May 31, 2022 at 10:30am

Meeting Location: 212 River Dr. Wausau WI 54403, Room 5

The meeting site identified above will be open to the public. Persons wishing to attend the meeting by phone may call into the telephone conference beginning ten minutes prior to the start time indicated above using the following number: 1-408-418-9388 Access code: 2497 390 0396. When you enter the telephone conference, PLEASE PUT YOUR PHONE ON MUTE!

Park Commission Members -

Commissioners: Dawn Herbst, Jean Maszk, Allen Opall, Rick Seefeldt, Kelly Zagrzebski, Carol Lukens, Lou Larsen

Marathon County Mission Statement: Marathon County Government serves people by leading, coordinating, and providing county, regional, and statewide initiatives. It directly or in cooperation with other public and private partners provides services and creates opportunities that make Marathon County and the surrounding area a preferred place to live, work, visit, and do business. (Last updated: 12-20-05)

Parks, Recreation and Forestry Department Mission Statement: Adaptively manage our park and forest lands for natural resource sustainability while providing healthy recreational opportunities and unique experiences making Marathon County the preferred place to live, work, and play.

Agenda Items

1. **Call to Order**
2. **Public Comment Period – Not to Exceed 15 Minutes – Any Person Who Wishes to Address the Commission Must Provide, Name, Address and the Topic to the President of the Commission No Later than Five Minutes Before the Start of the Meeting. Topics must be relevant to the Committee’s area of jurisdiction.**
3. **Approval of the Minutes of the May 3, 2022 Park Commission Meeting**
4. **Policy Issues for Discussion and Committee Determination**
 - A. Discussion and Possible Action by Committee
 1. Election of President and Vice President
 2. Westside Master Plan Progress Update – MSA Professional Services
5. **Operational Functions Required by Statute, Ordinance or Resolution:**
 - A. Discussion and Possible Action by Committee
 1. Roles, Responsibilities and Authority of the Park Commission
 - B. Discussion and Possible Action by Committee to Forward to the Environmental Resource Committee for its Consideration
 1. None
6. **Policy Issues for Discussion and Committee Determination for Consideration by Environmental Resources Committee**
 - A. **New Full Time Position Request for 2023 – Maintenance Technician**
7. **Educational Presentations/Outcome Monitoring Reports**
 - A. Department Overview
 - B. Park Update – Marathon Park Utilities, Ice Arena Roof & Cooling ~~Tower~~ Tower, DC Everest Park Boat Launch, Sunnyvale Softball, Peoples Sports Complex, Pools & Splash Pad, Routine Operations/Programs

8. Announcements

- A. Next Meeting Date & Time, Location – Tuesday, July 5, 2022 at 10:30am, 212 River Dr, Room 5. Wausau, WI 54403
- B. Future Agenda Items – Ordinance Updates

9. Adjourn

Signed /s/ Jamie Polley
Presiding Officer or Her Designee

Any person planning to attend this meeting who needs some type of special accommodation in order to participate should call the County Clerk's Office at 715-261-1500 or e-mail countyclerk@co.marathon.wi.us one business day before the meeting.

FAXED TO DAILY HERALD

(Email/Fax City Pages, Marshfield News, Midwest Radio Group)

Date May 27, 2022 Time 12:25 p.m and 3:45 p.m. and 4:20 p.m.

By Jodi Luebbe

THIS NOTICE POSTED AT THE COURTHOUSE

Date _____ Time _____

By _____

DRAFT
MARATHON COUNTY PARK COMMISSION

Date and Time of Meeting: May 3, 2022 at 10:30am Location: Room 5, 212 River Drive, Wausau WI 54403

Park Commissioners present: Dawn Herbst, Jean Maszk, Allen Opall, Rick Seefeldt, Kelly Zagrzebski, two vacancies

Staff present: Jamie Polley-Parks, Recreation and Forestry Director, Marcus Aumann-Assistant Director of Community Services - (via webex), Andy Sims-Assistant Director of Operations

1. Call to Order – Vice-President Seefeldt called the Park Commission meeting to order at 10:30am. Official notice and the agenda for the meeting was posted publicly in accordance with the State statutes.

2. Public Comment – Commission members mentioned a letter from a snowmobile club that had been sent to County Board members expressing their concern over the Motorized Recreation Coordinator vacancy. Aumann discussed the current status of the program and the new position which is titled Recreation Coordinator. Aumann will reach out to the club to give them information.

3. Approval of the Minutes of the April 5, 2022 Park Commission Meeting – Motion by Maszk, second by Zagrzebski to approve the April 5, 2022 meeting minutes. Motion **carried** by voice vote, vote reflected as 5-0.

4. Policy Issues for Discussion and Committee Determination

A. Discussion and Possible Action by Committee

1. Westside Master Plan Progress Update - Polley explained that at the June meeting MSA will be present to provide preliminary concepts and a review of public input. Community input is still being taken through a public survey and an open house will be held on May 17th. MSA is gathering information from all entities involved and has given an initial report. Polley said that Marathon Park is a beautiful park in the center of Wausau and they would like to make it more pristine. She discussed some of the possible ideas which could include making it more parklike by planting more grass and removing some of the gravel, removing/shifting roads, making the perimeter road into walking trails, moving/updating or building a new hockey rink, updating East Gate Hall, and removing public parking in the park during the Fair. Polley discussed other considerations including the area directly south of the park, the University area east of the park, Marathon Junction, and camping. Seefeldt discussed some of the Fairboards ideas. Polley said next month MSA will go into the concepts more in-depth based on discussions and feedback.

5. Operational Functions Required by Statute, Ordinance or Resolution:

A. Discussion and Possible Action by Committee - None

B. Discussion and Possible Action by Committee to Forward to the Environmental Resource Committee for its Consideration - None

Opall left the meeting at 11:30 a.m.

6. Policy Issues for Discussion and Committee Determination for Consideration by Environmental Resources Committee

A. 2023 Capital Improvement Project Requests – Polley explained that projects are due May 20th and will be going to the Environmental Resources Committee meeting on May 31st. She discussed the following projects that staff will be submitting which include replacing the Marathon Park campground playground, the Amco Park playground, replacing the DC Everest Park restroom and possibly hooking it to city sewer and water, Big Eau Pleine Park road repairs, Multipurpose Building flat roof repair, replacing Sunny Vale Park softball field lights, replacing the Multipurpose Buildings cooling tower, reconstruction of the Dells of Eau Claire Park beach parking area and roadway, and beginning implementation of items identified within the Westside Master Plan. Questions were answered. **Motion** by Maszk, second by Herbst to approve the 2023 Capital Improvement Project requests. Motion **carried** by voice vote, vote reflected as 4-0.

7. Educational Presentation/Outcome Monitoring Reports for Discussion

A. Park Update – Big Eau Pleine: Playground installation is underway, roadway work is scheduled for September. Sunnyvale Softball: Programs have begun. People’s Sports Complex: Limited play begins May 1, regular play begins May 8, tournament on May 14-15. Various park and forest units: Significant spring clean-up. Campgrounds: Campgrounds open for the season April 29. Routine Operations/Programs: Firewood Processing is complete, Urban forestry program: Regular tree maintenance, small pruning. Building and structure maintenance, equipment maintenance and repair, shelter rentals and events.

8. Announcements

A. Next Meeting Date & Time, Location – Tuesday, May 31, 2022 at 10:30am, 212 River Dr., Rm. 5, Wausau WI 54403.

B. Future Agenda Items – Ordinance Updates, role of Park Commission

9. Adjourn – Motion by Herbst, second by Maszk to adjourn at 11:50 a.m. Motion **carried** by voice vote, vote reflected as 4-0.

AGENDA SUMMARY

4A1. Election of President and Vice President

The Park Commission members are asked to nominate and elect a President and Vice President of the Park Commission for the next one-year term.

4A2. Discussion and Possible Action Westside Master Plan Progress Update

MSA Professional Services will provide the Commission with an update on the Westside Master Plan process that will include what has been done to date, a review of the survey that was available to the public until May 8th, the outcome of the Community Open House held on May 17th and an overview of the survey available until May 31st to comment on the ideas within each concept design. MSA will be seeking feedback from the Commission on the ideas within each concept. They will then provide the Commission with the how the planning will move forward. A copy of their presentation is within the packet.

5A1. Discussion and Possible Action on the Roles, Responsibilities and Authority of the Park Commission

Staff will discuss the roles and responsibilities of the Park Commission, how the Park Commission was formed and what authority the Park Commission has regarding the City and County Parks.

6A. Discussion and Possible Action Recommending a New Full Time Position for 2023 – Maintenance Technician

The position requested is a Maintenance Technician. This position would be under the direction of the Assistant Director of Operations and is needed based on the added amenities, events and maintenance requirements. Hiring a maintenance technician will allow the department to enhance the services we provide to the community and allow other staff to more efficiently manage their work load. This position would be funded 50% by the County and 50% by the City.

The Park Commission is asked to recommend the addition of the position to the Environmental Resources Committee for further recommendation to the County Board and City Council.

7A. Department Overview

Staff will provide the Park Commission with an overview of the department including staffing, areas of responsibility, past work completed and the work plan for 2022. No action is requested on this informational item.

7B. Park Updates

Marathon Park Utilities

An RFP has been issued to map the park utilities and develop a plan to bring the current seasonal lines to code. Proposals are due June 3.

Marathon Park Ice Arena Roof & Cooling Tower

The membrane roof between the two ice sheets has some significant leaks. A price to make the repairs was obtained and the repairs will be made this summer. The cooling tower is inoperable. Staff is developing options for repair or replacement. The repair or replacement must be completed before the 2022 hockey season. Therefore, this item may come back to the Commission this year.

DC Everest Park:

Boat launch planks have been replaced. Some paving and restoration work to be completed.

Sunnyvale Softball:

We have a new user this year, Wausau Youth Baseball, which has made a good transition in.

People's Sports Complex:

Tournament May 14-15 brought in 100+ teams and had beautiful weather. We received a lot of positive comments. The paving around the concession building is complete

Routine Operations/Programs:

Urban forestry program: Regular tree maintenance, small pruning, tree planting

Building and structure maintenance.

Equipment maintenance and repair

Shelter rentals and events



Marathon County Westside Master Plan

Park Commission

May 31, 2022



Consultant Team



**Jason Valerius,
AICP**

Project Manager



**Raine Gardner,
PE**

Senior Professional Engineer
Parks and Rec



**Dan Williams,
PLA, ASLA, AHLA**

Senior Landscape Architect



**Michael Bahr,
AIA**

Master Plan Facilitator



Steering Committee

MARATHON COUNTY

Troy Torgerson – *Planner, Facilities and Capital Management*

Jamie Polley – *Director, City/County Parks, Recreation and Forestry Department*

Laurie Miskimins – *Director, Department of Conservation, Planning & Zoning*

Dave Mack – *Planning Manager, Department of Conservation, Planning & Zoning*

Terry Kaiser – *Director, Facilities and Capital Management*

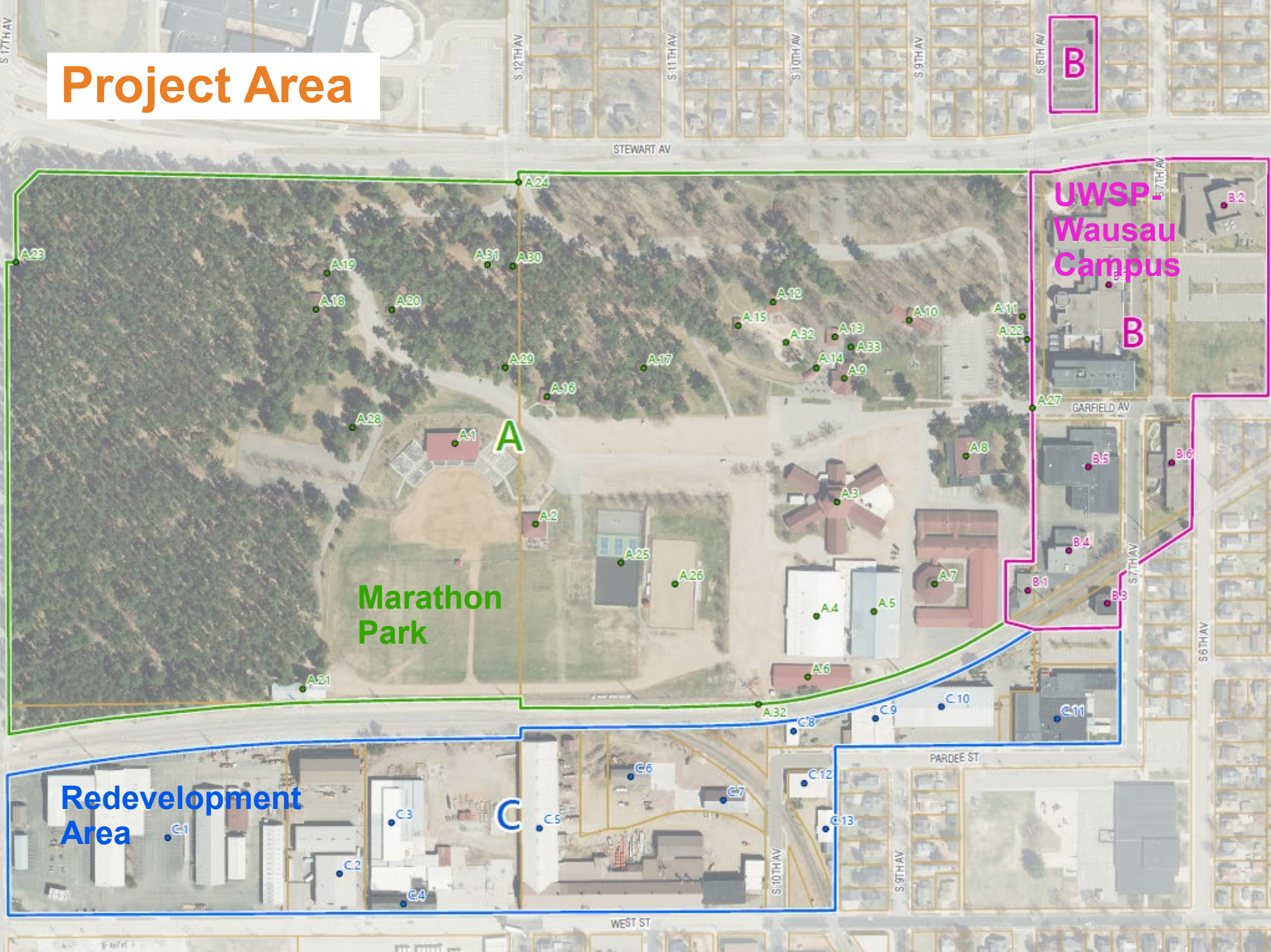
CITY OF WAUSAU

Liz Brodek – *Director, Department of Planning, Community & Economic Development*

UWSP - WAUSAU

Ann Herda-Rapp – *Campus Executive*

Project Area



Marathon Park

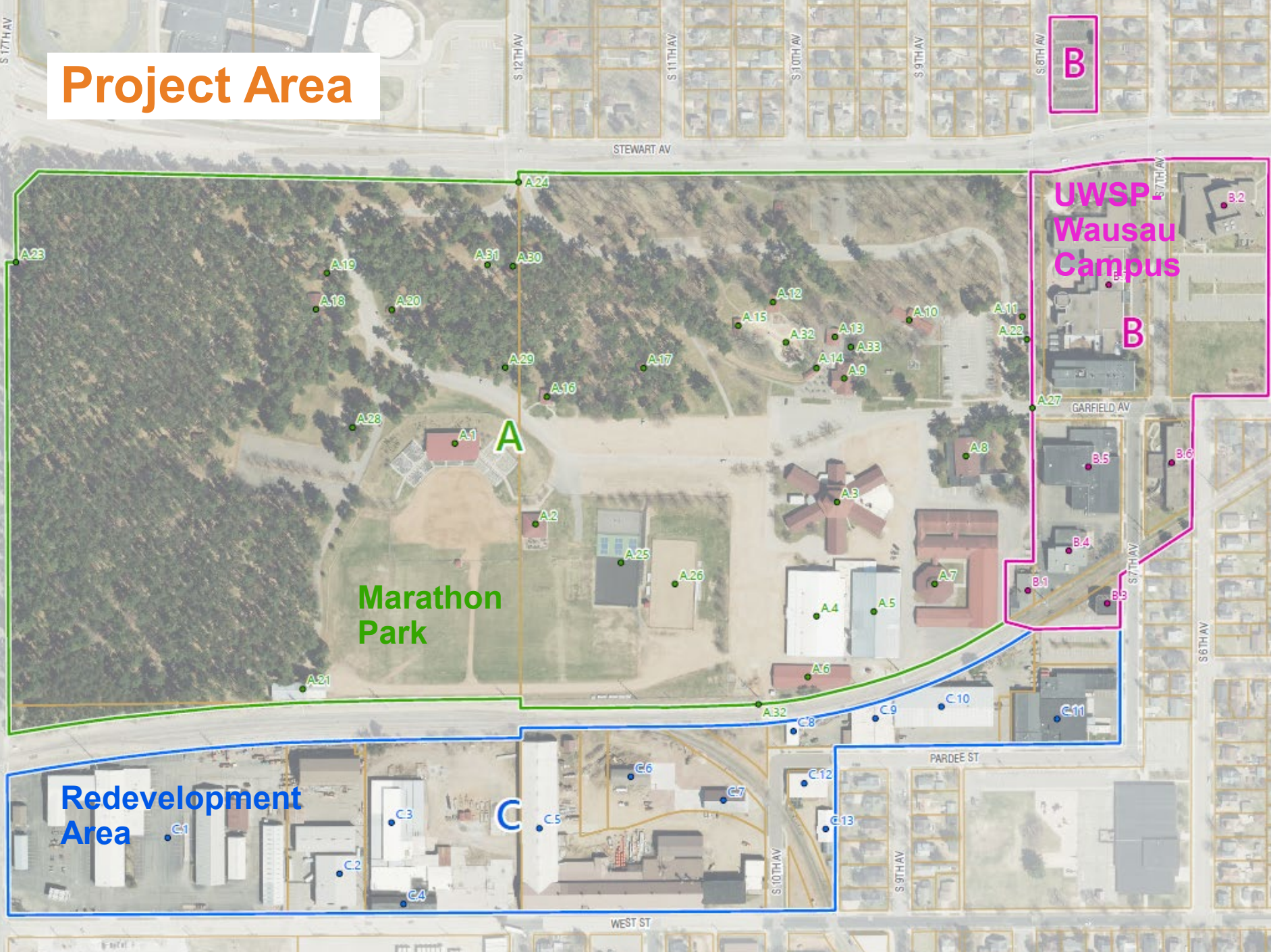
**UWSP
Wausau
Campus**

**Redevelopment
Area**

A

B

C



General Purposes

- Plan the USES of land and structures in the study area, INCLUDING USES TO MAINTAIN and USES TO CHANGE
- Propose and prioritize specific CAPITAL IMPROVEMENTS to be made over the next 10-15 years
- Seek opportunities to GROW NET REVENUE from County property



Specific Questions

- What should happen with Marathon Hall?
- What should we do with the County Highway Department site and others along West St.?
- How can we support the many current uses while making the entire Park more green and inviting?



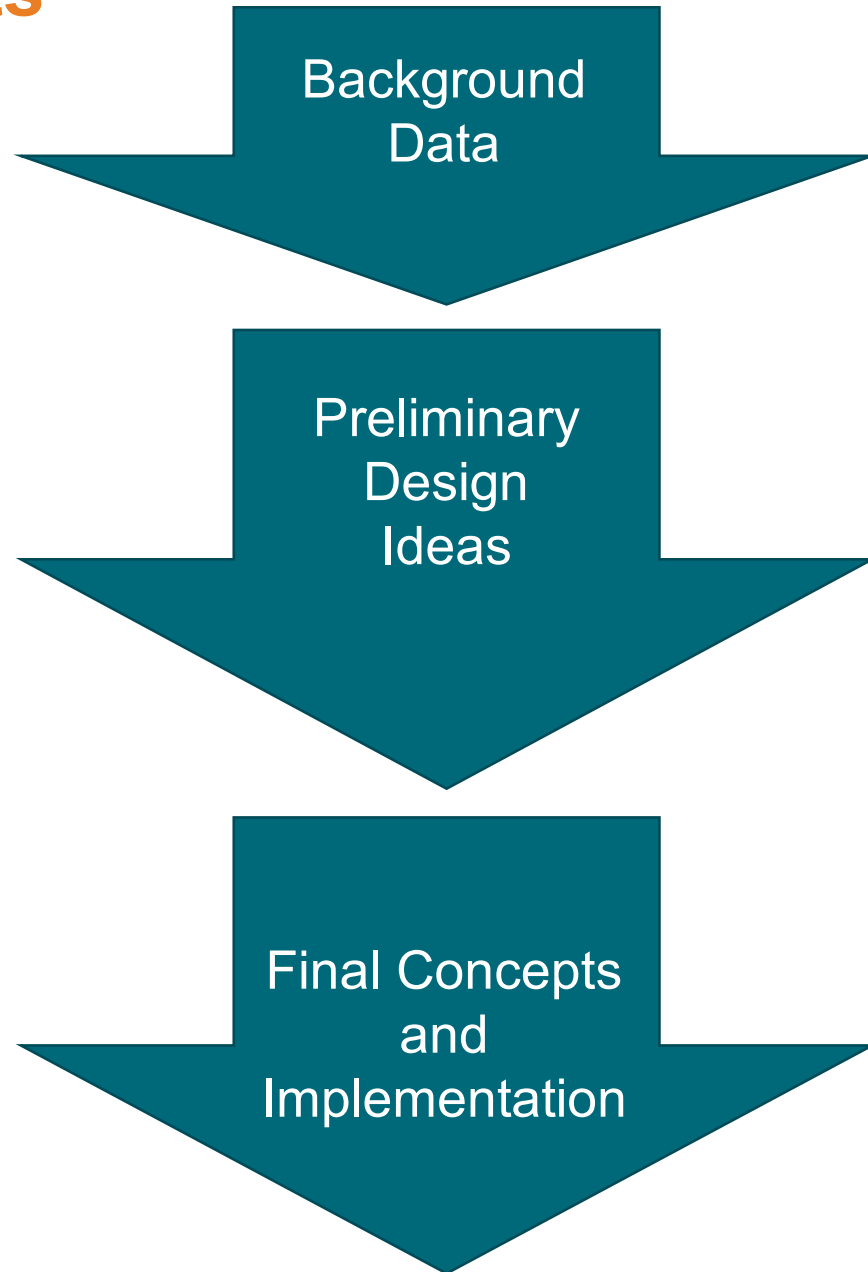
Stakeholders

- County Parks Department
- County Highway Department
- UWSP-Wausau
- City of Wausau
- Fair Board/Agricultural Society
- School District
- Park Users/Public
- Adjacent Neighborhoods
- Athletic Organizations
- Historic Preservation Interests
- Marathon Junction – Concessions
- Campground Users



Schedule Highlights

- January
 - **Staff Interviews**
 - **Site/Building Tour**
- **February**
- March
 - **County Board**
 - **Stakeholder Interviews**
- **April**
 - **Community Survey**
- May
 - **Public Meeting**
 - **Park Commission**
- **June**
- July
- **August**
 - **HR/Finance Committee**
 - **Park Commission**
- **September**
- October
 - **County Board Adoption**



SURVEY RESULTS

How many times did you visit the park in the past 12 months?

At least once...

Trail Walking/Running – 63%

Fair – 63%

Playgrounds – 57%

Art in the Park – 51%

Picnicking – 46%

At least 20 times...

Indoor Hockey/Ice Skating – 13%

Trail Walking/Running – 12%

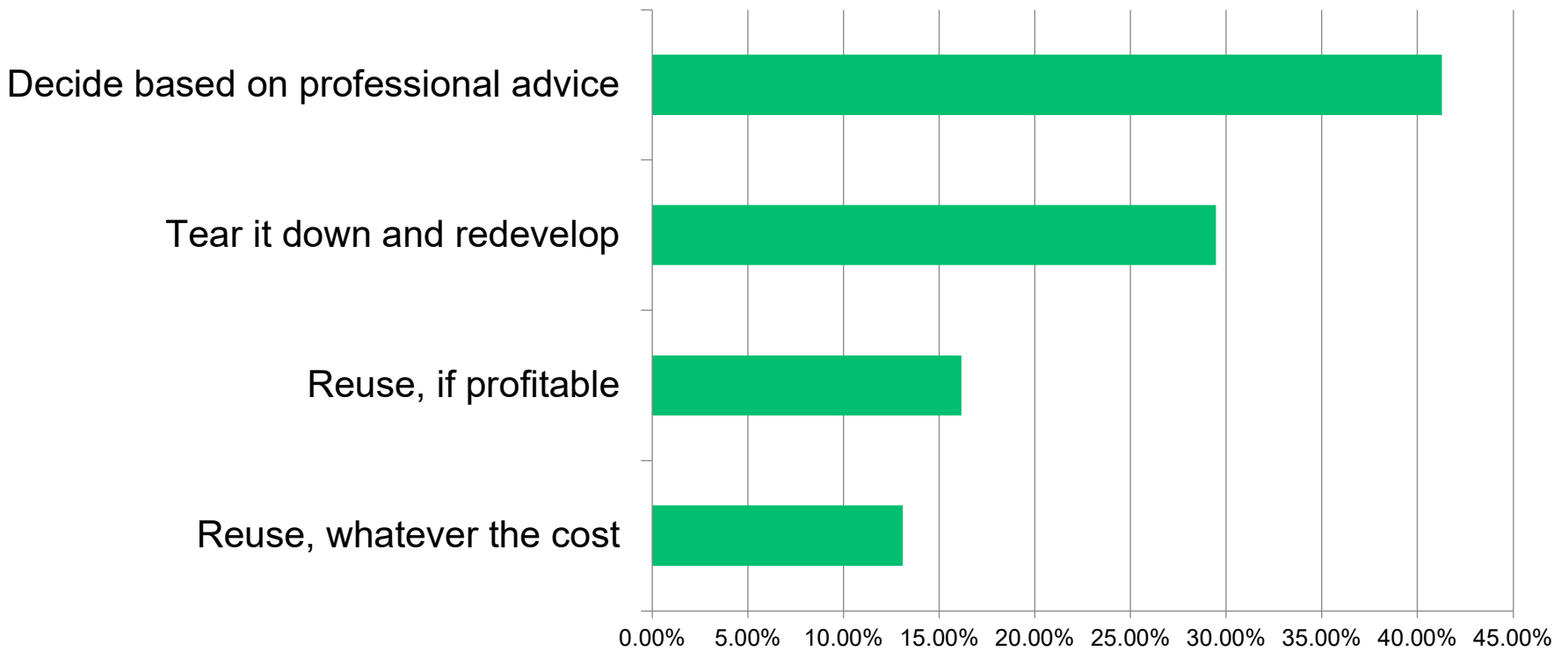
Dog Walking/Recreation – 7%

Playgrounds – 6%

Pickleball – 5%

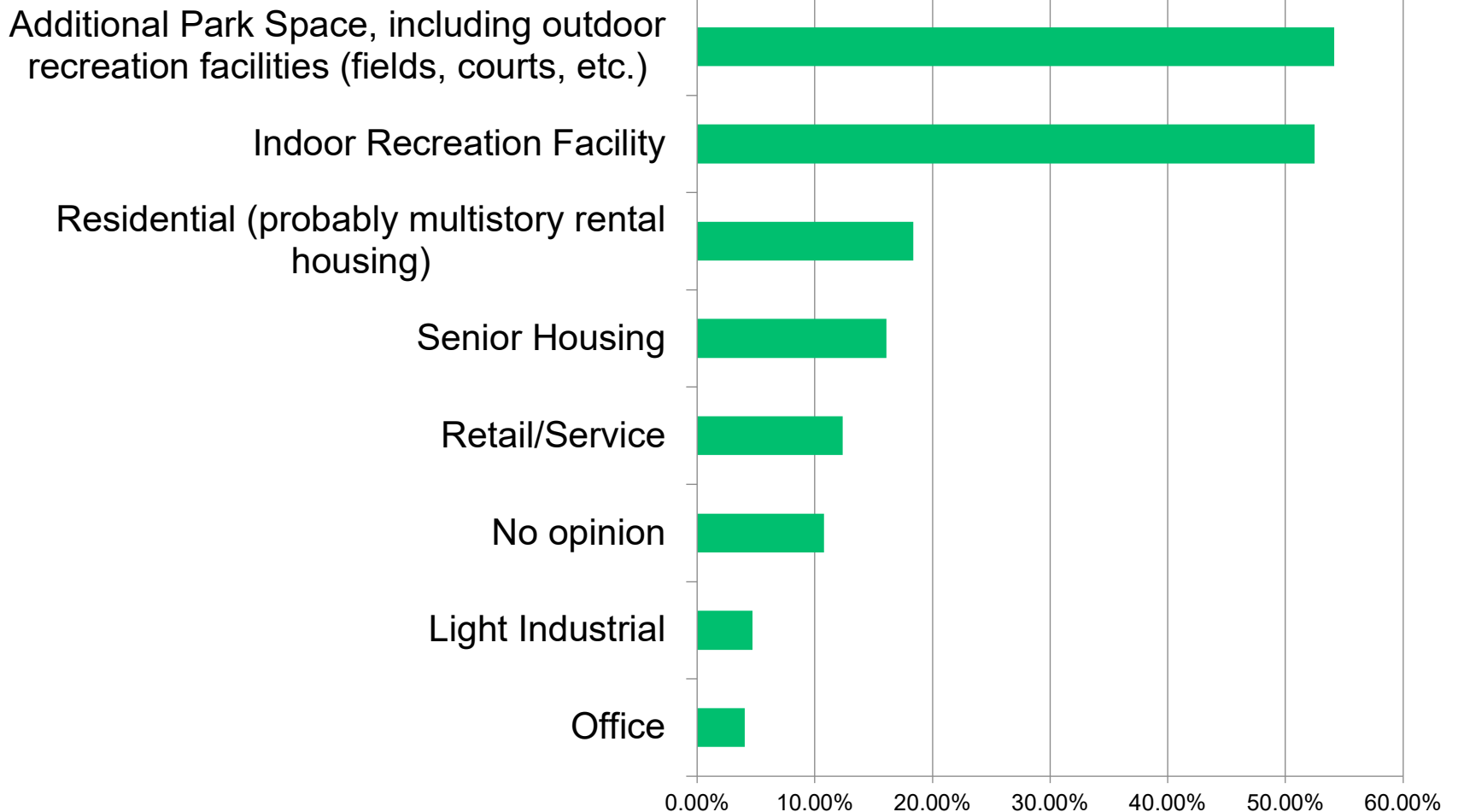
SURVEY RESULTS

What should we do with Marathon Hall?



SURVEY RESULTS

New Uses south of the Park?



About the Design Concepts...

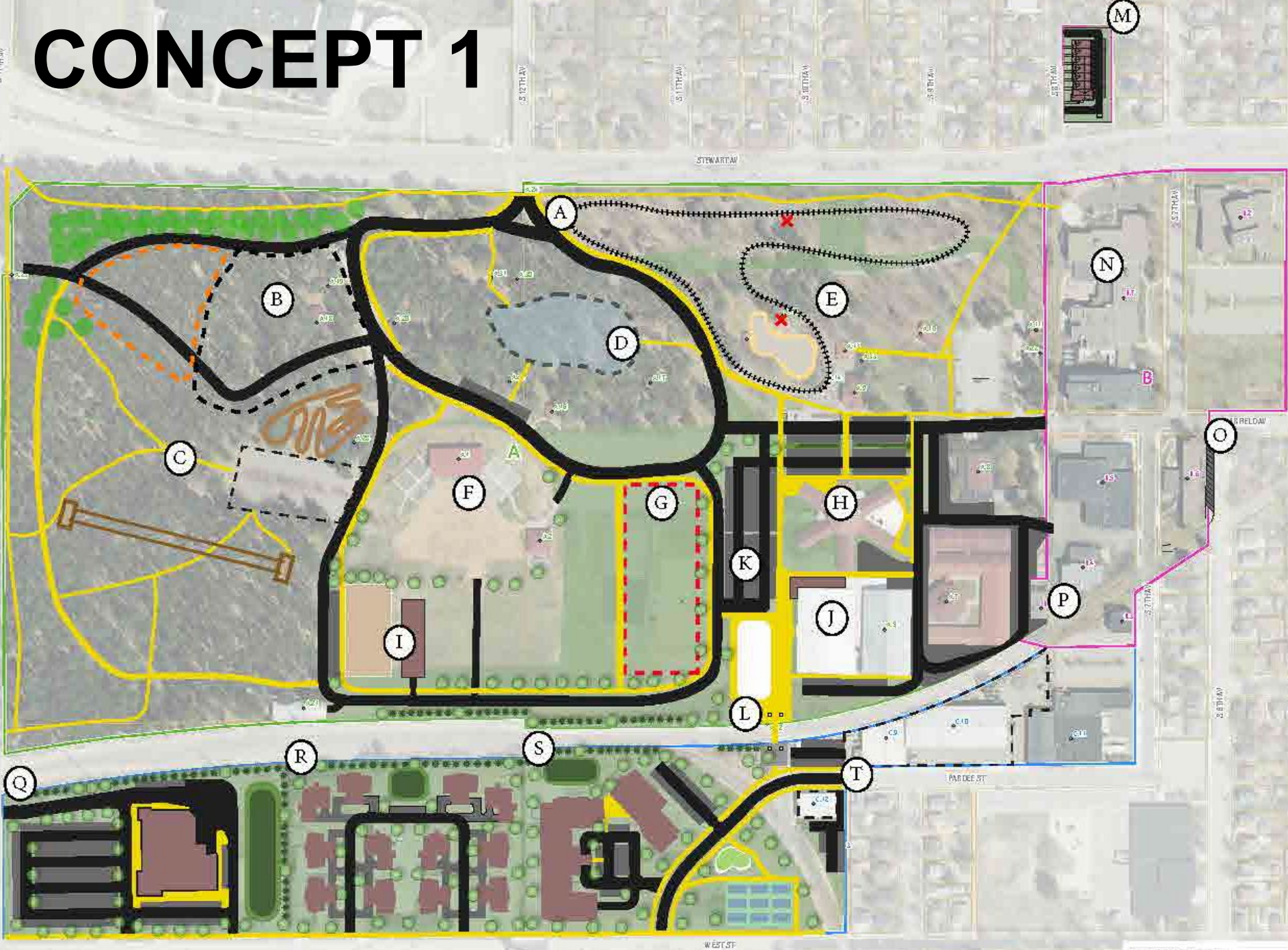
They are:

- Collections of Potential Ideas that vary in Scale
- Intended to Generate Further Discussion

They are NOT:

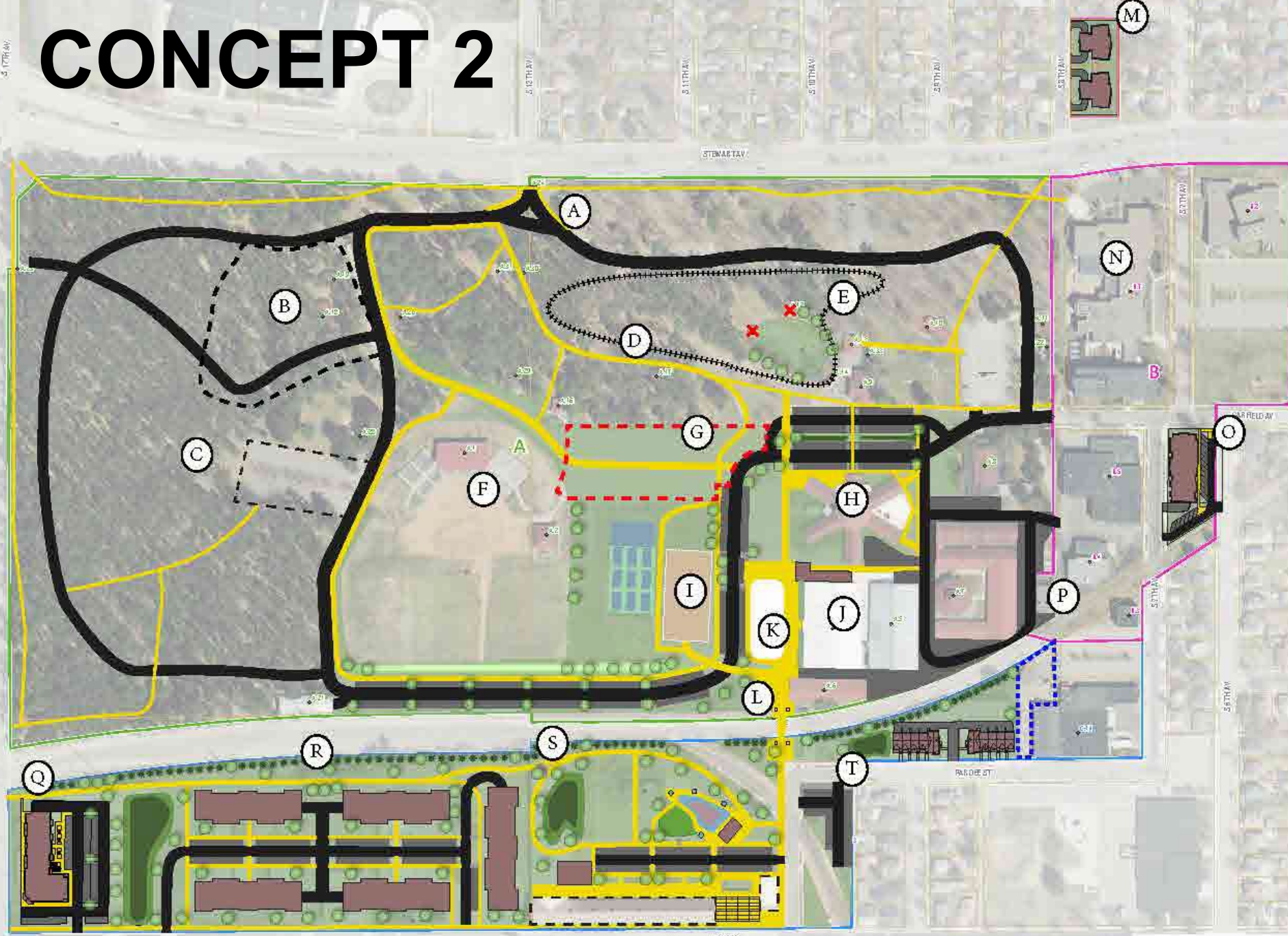
- Package Deals (can mix and match ideas)
- Considering Costs (yet)
- Comprehensive (what are your ideas?)

CONCEPT 1



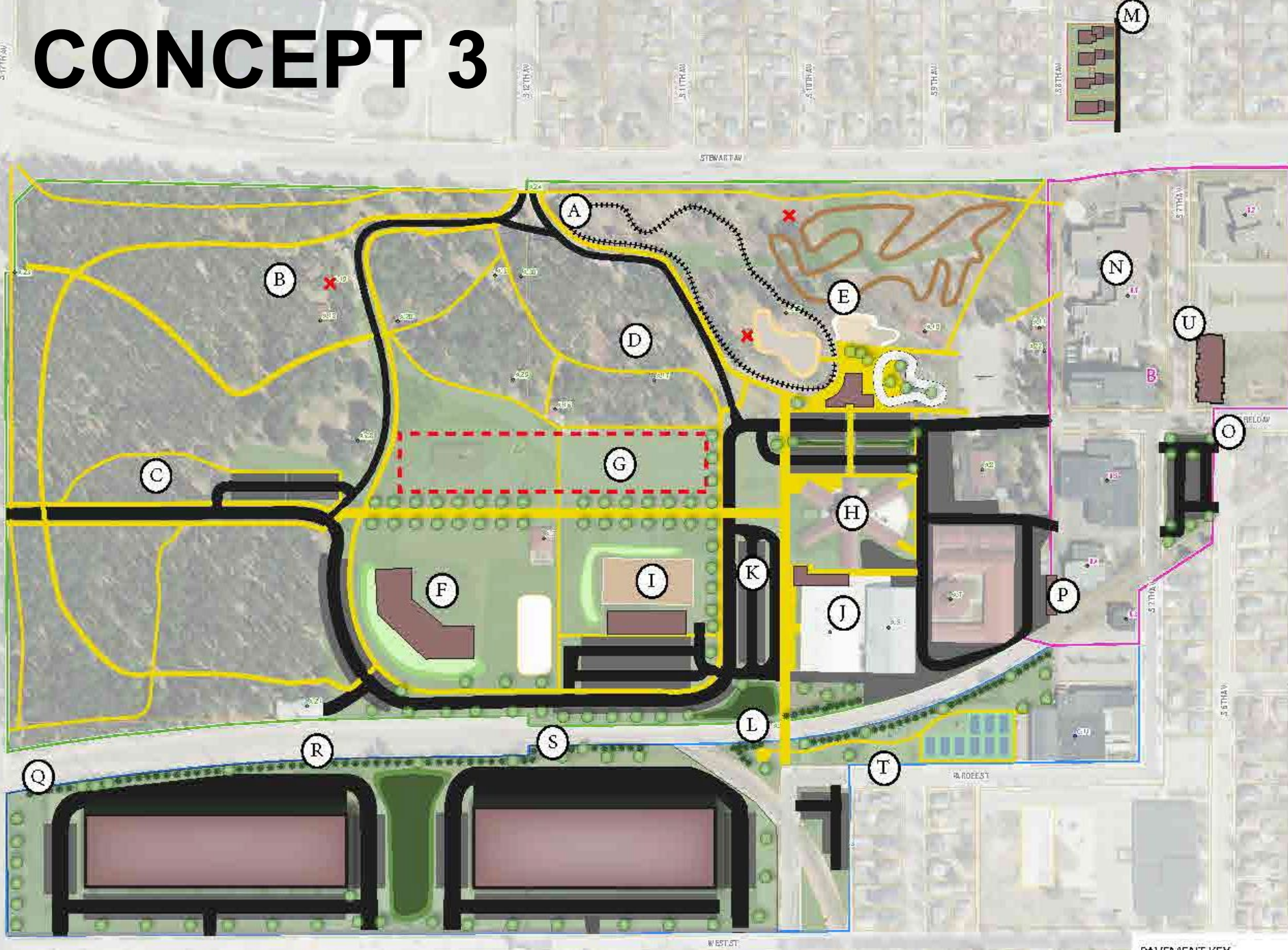
PAVEMENT KEY

CONCEPT 2



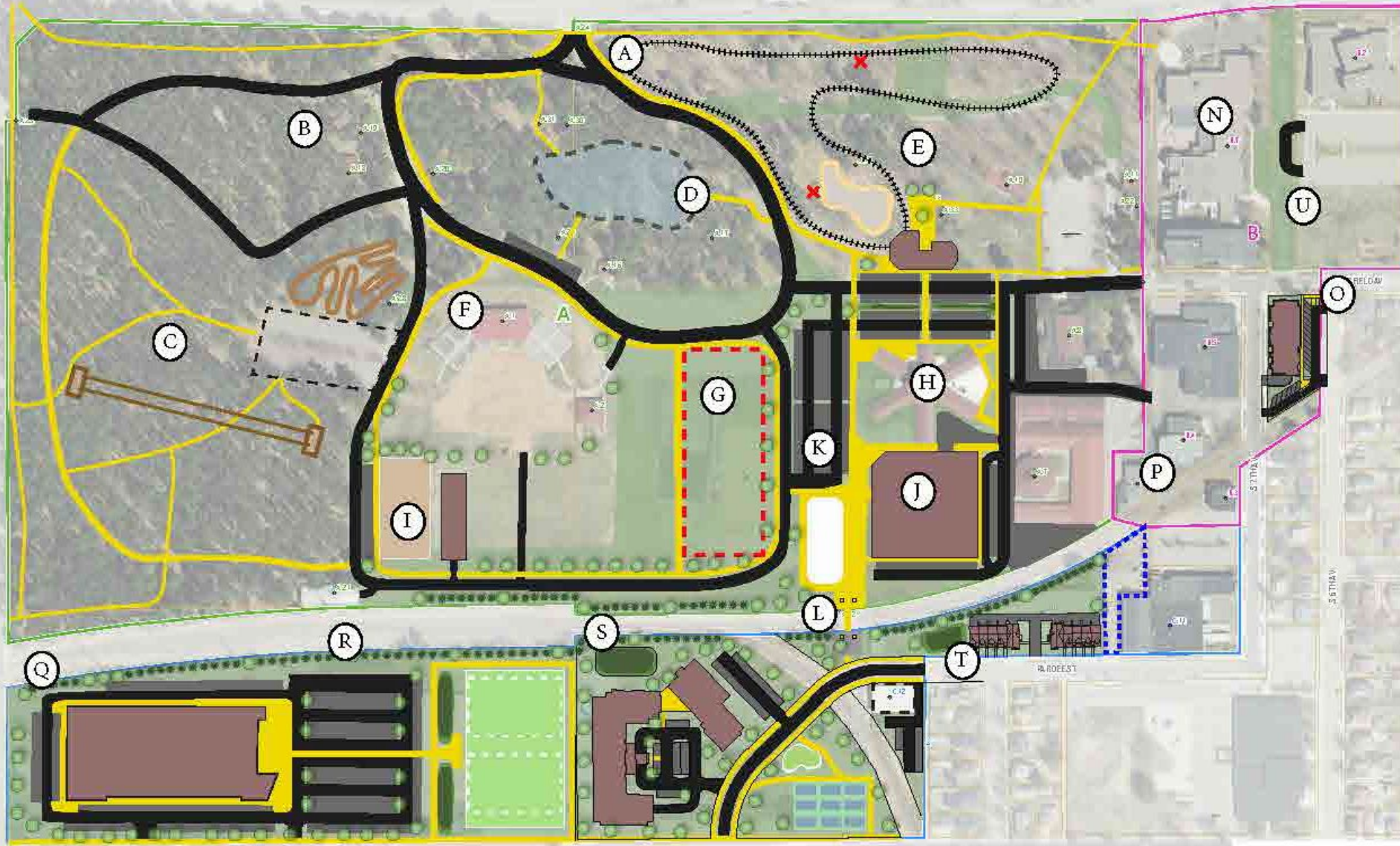
PAVEMENT KEY

CONCEPT 3



PAVEMENT KEY

CONCEPT 4



PAVEMENT KEY

Public Meeting and Online Feedback

- Pickleball is very popular – it needs nearby parking and bathrooms and may be best if NOT near housing (early AM matches), and more courts would be great
- Concerts in the bandstand – the audience includes older people with limited mobility who prefer to listen from their cars
- More walking trails and fewer vehicles in the woods would be great
- Mixed feelings about camping
- Strong support for expanded train loop and playground/dream park
- Strong support for updating the splash pad and Marathon Junction
- Mixed feelings about moving ice sports to a new facility outside the park, though that is the most popular alternative use on West St.
- Other ideas suggested
 - Skate park
 - Disc golf course
- Other feedback
 - Minimal changes – spruce up what we have
 - Protect the trees!

Preference Survey



Project Website



<https://storymaps.arcgis.com/stories/67b77baa4c9941d28e616977a3e4fbd1>

Open through Tuesday, May 31
<https://www.surveymonkey.com/r/73N823V>



(12) *Marathon County Park Commission.*

- (a) *Mission/purpose:* Provide a park and forest recreation system that will meet the needs of our current and future generations, preserve and protect the County's open space, water, historical, cultural, and natural resources; and provide recreation opportunities that are designed to enhance the County's quality of life.
- (b) *Membership:* The Marathon County Administrator shall appoint seven members to the Park Commission. Those members shall be comprised of three Marathon County Board Supervisors, three Wausau City Council members and one citizen member.
- (c) *Duties and responsibilities:*
 - 1. Monitor, preserve and protect the County's open space, water, historical, cultural, natural and economic resources.
 - 2. Determine and recommend recreational and tourism programs within the County.
 - 3. Recommend policy and funding for establishing and implementing park and recreation programs and facilities.
 - 4. Monitor and recommend policy for the development and maintenance of recreation trails including County-sponsored trails and State-funded trails.
 - 5. Make rules and recommend ordinances for the regulation of the use and enjoyment of the County parks, trails and recreation lands.

BYLAWS of the
MARATHON COUNTY PARK COMMISSION

as adopted May 16, 1968 and
revised September 16, 1986,

January 13, 1993,

January 10, 2001, and

January __, 2003

Article I - POWERS OF THE COMMISSION

Section 1. The Marathon County Park Commission and the Wausau Park Board were created and given their authority by Marathon County Board Resolution dated April 22, 1920; and the Wausau City Council Ordinance Number 3 and dated April 18, 1905. The Wausau Park Board was merged into the Marathon County Park Commission with associated modifications made in the authority of the Commission by Marathon County Board Resolution 69-74, adopted October 29, 1974, and Wausau City Council Resolution File No. 71-0550, adopted October 31, 1974. Further modifications in the authority of the Commission were made by Marathon County Board Resolution 30-83, adopted May 24, 1983, and Wausau

City Council Resolution File No. 83-0332, adopted March 22, 1983. Most recently, modifications in the authority of the Commission were made by Marathon County Board Resolution No. R-54-92, adopted on August 25, 1992, and Wausau City Council Resolution File No. 92-0814 adopted August 11, 1992. These Resolutions direct the Commission to conform to the laws of the State of Wisconsin as found in Chapter 27.075, 66.30, 59.083, and 59.025.

Article II - JOINT RESPONSIBILITIES

Section 1. The Marathon County Park Commission shall govern, jointly and cooperatively with Marathon County and the City of Wausau, a single Park Department to be known as the ~~Wausau/Marathon County Park Department~~ **Wausau and Marathon County Parks, Recreation, and Forestry Department**, which shall impartially execute all plans and policies of both Wausau and Marathon County.

Article III - MEMBERS AND TERMS

Section 1. There shall be seven members of the Commission, appointed by the Marathon County Administrator and confirmed by the Marathon County Board of

Supervisors consisting of three (3) members whose names shall be recommended by the Mayor of Wausau to the County Administrator and who shall be Wausau Common Council members, three (3) members who shall be Marathon County Board Supervisors residing outside the City limits, and one (1) member who shall be neither a City Council member or a County Board Supervisor, and whose name shall be mutually agreed to by the Mayor and the County Administrator. Members of the Park Commission shall serve a term of seven (7) years or until they are no longer serving as Common Council members or County Board members. In the event an appointment is made to fill a vacancy during the seven year term, the term of the appointee shall be the balance of the term remaining to the replaced member. (See Resolutions, Article I).

Article IV - OFFICERS OF THE COMMISSION

Section 1. The Commission shall elect a President, and a Vice-President, who shall be elected by the Commissioners at their regular July meeting. Said officers shall hold office for one year and until their successors

are elected and qualified. The County Treasurer shall be the Treasurer of the Commission.

Article V - DUTIES OF THE PRESIDENT

Section 1. The President shall preside at all meetings of the Commission, and shall have a vote upon all resolutions as a Commissioner.

Section 2. He shall appoint special committees at such times as he and the Commission deem it necessary to carry on its official business.

Section 3. He shall sign in the name of the Marathon County Park Commission, all contracts and legal documents authorized by the Commission.

Article VI - DUTIES OF THE VICE-PRESIDENT

Section 1. The Vice-President shall preside at meetings in the absence or incapacity of the President, and shall perform such other duties usually appertaining to his office, or as may be assigned to him by the Commission.

Article VII - STANDING COMMITTEES

Section 1. There shall be two standing committees of the Park Commission: Buildings and Grounds and Finance. Each

Committee shall consist of a chairman and one member to be appointed by the President of the Commission.

Article VIII - REMOVAL OF COMMISSIONERS

Section 1. The Marathon County Board of Supervisors may remove any member of the Commission for cause.

Article IX - COMPENSATION OF MEMBERS

Section 1. All members of the Commission may receive a per diem or honorarium and expense allowance as established by the Marathon County Board of Supervisors for attending Commission meetings, either scheduled or special.

Article X - PARK DIRECTOR

Section 1. Under Wisconsin Statutes 27.03(2), the Park Director shall be appointed by the County Administrator with confirmation by the Marathon County Board of Supervisors. The Administrator shall consult with the Mayor of Wausau and representatives from the Park Commission on the appointment. The Park Director shall administer the affairs of the Park Department, and perform all other duties as may be assigned by the Park Commission, County Administrator or the Mayor of Wausau.

Article XI - PERSONNEL

Section 1. The Commission may delegate authority to the Park Director to employ or discharge any employee, or make other special provision therefore, and to contract for the services (full-time or part-time) of consultants or technicians, as allowed by and within the budgets as approved by the County Board of Supervisors and the Wausau Common Council.

Section 2. All employees shall be considered Marathon County employees and shall be under the same County Ordinance, labor agreement or personnel policies available to all Marathon County employees ~~with the exceptions of: (1) the Recreation Superintendent who is a City of Wausau Employee; and (2) seasonal employees who work 100 percent on City programs.~~

Section 3. Administrative and non-represented professional employees shall be compensated, in equal amounts, by both the City of Wausau and Marathon County as specified in County Ordinance Number 69-74 and dated October 29, 1974; and City of Wausau Ordinance Number 71-0550 and dated July 8, 1975, except for: (1) the Recreation Superintendent and City Forester

- 90 percent City and 10 percent County; (2) Chief Ranger - 40 percent City, 60 percent County.

Section 4. All hourly personnel ~~except seasonal employees who work 100 percent on City programs~~ shall be paid by Marathon County, except that monies paid for work performed in the Wausau Park System shall be returned to Marathon County by the City of Wausau, in accordance with accounting systems devised by the Park Director and approved by the City of Wausau and Marathon County. ~~Seasonal employees who work 100 percent on City programs will be paid directly by the City of Wausau.~~

Article XII - PROPERTY

Section 1. The Commission shall, in its cooperative control of the Park Department, manage the property of Marathon County and the City of Wausau in the following manner:

A. Land and Facilities - The Commission shall segregate the expenditure of funds for land and facilities so that the City and County pay only for their respective lands and facilities. The Commission may act as the agent of the City and the

County in all matters concerning the acquisition, lease or disposal of land for park or recreation purposes, and the purchase, construction, maintenance, operation and disposal of park or recreation facilities.

B. Vehicles and Equipment - The Commission shall jointly purchase, maintain and operate all vehicles and equipment used to jointly operate and maintain City and County park and recreation facilities and programs with the costs being allocated equally divided between the City and County based on actual usage. Ownership of jointly acquired equipment shall be equally shared by the City and County. Ownership of jointly acquired vehicles shall be by the County for insurance and registration purposes, however all costs and benefits associated with vehicle ownership shall be jointly shared by the city and county. Exceptions to joint vehicles and equipment are those vehicles and equipment that are utilized exclusively in either the city or county will be paid for and owned accordingly.

Article XIII - MEETINGS

Section 1. Meetings of the Commission shall be held monthly on the second Wednesday of each month at the Park Department Office, 212 River Drive, Wausau, WI, unless otherwise approved by the Commission.

Section 2. The agenda of each regular meeting will be mailed to the membership not later than 48 hours prior to said meeting and publicly posted not less than 24 hours prior to said meeting in accordance with State Statute.

Article XIV - SPECIAL MEETINGS

Section 1. Special meetings may be called at any time by the President, or by the Park Director, with the consent of a simple majority of the members of the Commission.

Article XV - QUORUM

Section 1. Four voting members shall constitute a quorum for the transaction of business and all officers shall be elected by a majority of those present and voting.

Article XVI - PARLIAMENTARY PRACTICE

Section 1. Order of meetings:
a. Call to order

- b. Announcement of posting
- c. Director's Report
- d. Reports of officers and standing committees
- e. Reports of special committees
- f. Unfinished business
- g. New business
- h. Communications, petitions, and announcements
- i. Adjournment

Section 2. The rules of Parliamentary Practice comprised in "Robert's Rules of Order - Revised" shall govern in all cases in which they are not inconsistent with the standing rules and orders of this Commission and not contrary to the resolution establishing the Commission, or any existing law of the State of Wisconsin.

Article XVII - AMENDMENTS

Section 1. These bylaws may be altered, amended, added to or replaced by a majority of the members of the Commission at any regular meeting of said Commission, or at any properly-called special meeting, providing such changes are not inconsistent with or contravening the resolutions establishing

the Commission, or the laws of the State of Wisconsin. Further, before any changes are made in said bylaws, a copy of the proposed changes shall be filed with the President at least ten (10) days prior to the meeting at which action thereon is to be taken, and the President shall send a copy of said proposed changes by mail to each Commissioner at least five (5) days prior to said meeting, together with written notice of the time and place of such meetings.

Article XVIII - POLICIES OF THE COMMISSION

Section 1. The Commission shall maintain a policy statement manual containing and organizing all policy matters established by the Commission at its meetings.

Article XIX - REPORTS

Section 1. The Commission shall, on or before the thirty-first day of March of every year, submit a written report to the Board of Supervisors of the County of Marathon and to the Common Council of the City of Wausau, Wisconsin. Such reports shall contain a financial statement and a report of the activities

of the Commission during the preceding calendar year.

Article XX - REVENUES

Section 1. All revenues derived from fees for the use of facilities, privileges and conveniences provided within any Wausau or Marathon County park shall be paid over to the Wausau or Marathon County Treasurer and credited to the revenue accounts of the Park Department.

Article XXI - GRANTS

Section 1. The Commission may apply for, receive, and accept grants, subject to the approval of the Marathon County Board of Supervisors or the Wausau Common Council, from any governmental agency, and agree to and comply with such terms and conditions as may be necessary, convenient or desirable.

Article XXII - GIFTS AND BEQUESTS

Section 1. The Commission may accept any gifts or bequests and shall pay over to the Wausau or Marathon County Treasurer any monetary gift or bequest, which shall be budgeted and disbursed, as provided for any other Commission expenditure, unless otherwise

specifically directed by the donor, in which case the directions of the donor shall be strictly adhered to, insofar as possible, provided however, that the objective of any such gift or bequest shall adhere to and complement the overall program of the Park Department.

Article XXIII - BUDGET

Section 1. The Commission shall submit an annual budget as required by the City of Wausau and Marathon County. The Commission may submit separate requests for additional appropriations for the acquisition, development, maintenance, and operation of any park lands, which shall be subject to approval by the Wausau Common Council or the Board of Supervisors of Marathon County.

Article XXIV - EXPENDITURES AND DISBURSEMENTS

Section 1. All expenditures and disbursements of funds for Wausau or Marathon County park purposes shall be made through vouchers presented to the Finance Director of the City of Wausau or to the Marathon County Clerk as provided by law for other disbursements.

Article XXV - SAVING CLAUSE

Section 1. The sentences, sections, articles, schedules and provisions of this Resolution are declared to be severable and any portion which is declared to be unconstitutional or inoperative for any reasons shall

in no way affect the other provisions of the Resolution.

Approved and adopted by the Marathon County Park Commission on this _____ day of _____, 2001, in the City of Wausau, County of Marathon, State of Wisconsin.

President

Commissioner

Vice-President

Commissioner

Commissioner

Commissioner

Commissioner

CITY OF WAUSAU, WISCONSIN

JOINT
A RESOLUTION re. City-County Park
Department.

FILE NO. 71-0550
Introduced Oct. 31, 1974
Referred
Reported Back
Adopted Oct. 31, 1974
Other

RESOLUTION

WHEREAS, the City of Wausau and Marathon County created, heretofore, a joint committee to study a proposal the county assume full responsibility for certain large parks owned, managed by, and located within the City of Wausau; and

WHEREAS, two large city parks are regularly used by many persons who are not city residents; and

WHEREAS, park department personnel and management responsibilities are presently administered both by the city and county; and

WHEREAS, the city is willing to transfer to, and the county is willing to assume responsibility for certain park operations, including a transfer of employees; and

WHEREAS, continued employment of that number of city employees now assigned to city park operations is of great concern to the city, the county, and said employees; and

WHEREAS, the county is willing to employ those city employees terminated as a result of this action,

NOW, THEREFORE, BE IT RESOLVED:

- 1. The city shall release from employment that number of city employees presently assigned Park Department duties, and the employment of such employees is terminated, effective midnight, December 31, 1974.
- 2. Marathon County shall accept as county employees, effective at 12:01 A.M., January 1, 1975, those employees presently working for the City of Wausau,

7110550

which are released from city employment as a result of the within transfer of responsibilities. Such employees shall be assigned to duties in the Marathon County Park Department.

3. The city shall provide the county a roster of employees, including the name, position, date of hire, and present wage and benefit data for each employee affected by this resolution.
4. The city and the county hereby abolish, effective midnight, December 31, 1974, their respective park commissions as presently organized and constituted.
5. The county hereby creates, pursuant to sec. 27.075, a Park Commission composed of seven members, who shall assume the powers and duties of both the city and the county, as provided for in secs. 27.02 thru .06; 27.08 thru .15; and sec. 66.527, Wis. Stats., governing parks and recreation.
6. The composition of such commission, as to the terms of office of its commissioners and their method of appointment, shall be as set forth in the above statutes. The initial commissioners shall be appointed as follows: The Mayor of the City of Wausau shall provide to the Chairman of the Marathon County Board, three nominees for appointment to such commission, and the county board chairman shall appoint the city nominees, whose terms of office shall be apportioned amongst the seven member commission in such a manner that there shall always be three commissioners nominated by the Mayor of the City of Wausau, serving on such commission. The four members appointed by the Chairman of the Marathon County Board shall be residents of Marathon County, but not of the City of Wausau. Thereafter, the residence of the Mayor's nominees shall be as the Mayor may decide, but the chairman's nominees shall be non-Wausau residents.
7. The county and city shall share, on a 50-50 basis, the purchase price of all machinery and equipment purchased and used solely for park department purposes.

7
1
-
0
5
5
0
0

8. The county and city shall share, on a 50-50 basis, the salary and fringe benefit costs of the following County Park Department administrative positions for 1975: (See List Below)
9. In future years, if the 50-50 formula no longer is fair and equitable, the parties shall readjust the cost sharing to conform to the facts.

~~10. That Sylvan Hill and Athletic Park shall be leased by the county, from the city, for the sum of Ten Dollars (\$10.00) a year, each; that the two governing bodies shall, prior to December 31, 1974, execute a lease for each park. The terms and conditions of the leases shall be approved by the requisite city and county officials, prior to such approval by the governing bodies.~~

*elite #10 per
coordinating
committee report
adopted 7-8-75
(attached)*

COORDINATING COMMITTEE

Roger Otto

Robert C. Helber

John T. Hayes

John W. Lichten

Richard B. Anklam

COUNTY PARK DEPARTMENT ADMINISTRATIVE POSITIONS FOR 1975:

- | | |
|-----------------------------|--------------------------|
| 1. Superintendent of Parks | 8. Clerk-Steno I |
| 2. Assistant Superintendent | 9. Park Supervisor |
| 3. Park Forester | 10. Construction Foreman |
| 4. Recreation Coordinator | 11. Maintenance Foreman |
| 5. Administrative Assistant | 12. Horticulture Foreman |
| 6. Business Manager | 13. Park Supply Man |
| 7. Clerk-Steno II | |

71-0550

CITY OF WAUSAU, WISCONSIN

REPORT OF Coordinating Committee

Dated July 8, 1975

FILE NO. 71-0550
Introduced July 8, 1975
Referred _____
Adopted July 8, 1975
Filed _____
Other _____

To the Mayor and Common Council:

Your Coordinating Committee wishes to report at their May 21, 1975, meeting they recommended to delete paragraph #10 from Joint Resolution re: City-County Park Department adopted October 13, 1974, and add Sylvan Hill to paragraph #11 of Resolution re: Administration of City-County Parks, adopted April 14, 1975.

At their meeting on May 29, 1975, they recommended that Athletic Park is to be cleaned after every game and the contract with the Mets is to be a two-year contract with a second year option.

Signed John L. Kannenberg
John L. Kannenberg, Chairman

71-0550



COUNTY OF MARATHON

COURTHOUSE

WAUSAU, WISCONSIN 54401-5568

COUNTY CLERK
LOUANN E. FENHAUS

(715) 847-5500

September 1, 1992

John Hess, Mayor
City of Wausau
407 Grant Street
Wausau, WI 54401

Dear John:

Attached is a certified copy of Marathon County Resolution #R-54-92,
clarifying the City-County Parks Agreement.

This resolution was adopted by the Marathon County Board of Supervisors
at their Adjourned Organizational meeting which was held August 25, 1992.

Yours truly,

A handwritten signature in cursive script that reads "Louann".

Louann E. Fenhaus
Marathon County Clerk

kdk

cc: Bill Duncanson

RESOLUTION #R- 54 -92

RE: AGREEMENT CLARIFYING CITY-COUNTY PARK GOVERNANCE

WHEREAS, the County of Marathon and the City of Wausau have previously adopted resolutions concerning agreements defining the administration and management of City of Wausau parks; and

WHEREAS, the City's mayor and attorney and the County's administrator and corporation counsel have agreed to modifying language desired to clarify the selection process for park commissioners and governance of city parks; and

WHEREAS, the Marathon County Park Commission and Director of Parks is supportive of said modifying language.

NOW, THEREFORE, BE IT RESOLVED, that the Board of Supervisors of the County of Marathon hereby ordains as follows:

1. Approving the two-page Agreement for City/County Park Governance, which is attached hereto and incorporated by reference as if fully set forth.
2. Authorizing and directing the County Administrator and County Clerk to execute said agreement.
3. Authorizing and directing the County Clerk to issue checks pursuant to this resolution and the Treasurer to honor same.

Dated: August 25, 1992

MARATHON COUNTY PARK COMMISSION

<u>Linda Lawrence</u>	<u>[Signature]</u>
<u>Robert J. Williams</u>	<u>[Signature]</u>
<u>[Signature]</u>	<u>[Signature]</u>

MARATHON COUNTY PLANNING COMMITTEE

<u>[Signature]</u>	<u>[Signature]</u>
<u>[Signature]</u>	<u>[Signature]</u>

Fiscal Impact: None known.

WD/ded

Revised
7/30/92

AGREEMENT FOR CITY/COUNTY PARK GOVERNANCE

THIS AGREEMENT made this 25th day of August, 1992, by and between Marathon County, a Wisconsin municipal body corporate, hereinafter referred to as COUNTY and the City of Wausau, a Wisconsin municipal corporation, hereinafter referred to as CITY.

WHEREAS, CITY and COUNTY have previously adopted resolutions concerning the administration and management of CITY parks, CITY resolutions being numbered as File No. 71-0550, adopted October 31, 1974, and File No. 83-0332, adopted March 22, 1983, and COUNTY resolutions being numbered as 69-74, adopted OCTOBER 29, 1974, and 30-83, adopted May 24, 1983.

NOW, THEREFORE, under authority of Wisconsin Statutes 27.075, 66.30, 59.083, and 59.025, CITY and COUNTY agree as follows:

1. There shall be a seven (7) member County Park Commission appointed by the County Administrator under 27.02(2) and by this Agreement, members of the Park Commission appointed by the County Administrator and confirmed by the County Board shall consist of three (3) members whose names shall be recommended by the Mayor of Wausau to the County Administrator and who shall be Common Council members, three (3) members who shall be County Board Supervisors residing outside the City limits, and one (1) member who shall be neither a City Council member or a County Board Supervisor, and whose name shall be mutually agreed to by the Mayor and the County Administrator. Members of the Park Commission shall serve a term of seven (7) years or until they are no longer serving as Common Council members or County Board Supervisors.

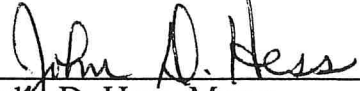
2. The County Administrator shall consult with the Mayor of Wausau in any matter pertaining to the hiring, termination, discipline, performance evaluation, or other personnel matter involving the County Director of Parks, however the decision of the County Administrator shall be final under authority of Statute 59.033(2)(b) and 27.03(2).

3. This agreement may be amended by mutual consent of both the City and County, with such amendment requiring formal action by both the County Board of Supervisors and the Common Council of the City of Wausau. This Agreement may be terminated by either the Common Council of the City or the County Board of Supervisors, however, notice of such termination shall be required in writing and provided to the other party no less than twelve (12) months in advance of the proposed termination date.

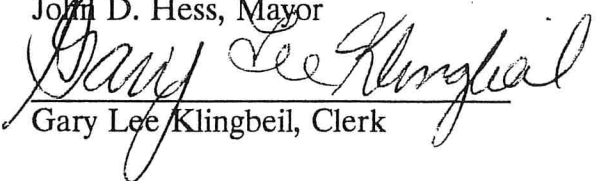
4. Within ninety (90) days of the effective date of this Agreement, the bylaws of the Park Commission in existence prior to this Agreement shall be changed to reflect this Agreement and to conform to current statutes.

5. To the extent that this Agreement conflicts with any previously adopted resolutions or agreements this Agreement shall control.

CITY OF WAUSAU BY:




John D. Hess, Mayor

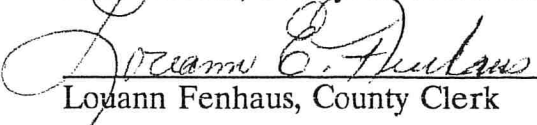


Gary Lee Klingbeil, Clerk

COUNTY OF MARATHON BY:



Mort McBain, County Administrator



Louann Fenhaus, County Clerk

LEGAL OPINION

TO: Mayor Katie Rosenberg
Common Council Members

FROM: Anne Jacobson, City Attorney

DATE: May 13, 2022

RE: Management and Operation of City Parks and Facilities

Facts:

On or before May 18, 2020, a question arose at the beginning of the pandemic regarding enforcement of the posted closures of playgrounds at city parks and the authority for such enforcement.

Legal Question: Under what authority does the county parks director, as a county employee, restrict, lock or close city park facilities to public use?

Background:

Historically, the Wausau Park Board was established in 1905 and the Marathon County Park Commission was established in 1920. The combined Park Department approach was initiated in about 1925 and the first department administrator of the City-County Park Department was created and hired in 1926.

On June 14, 1971, a County-City Study Committee was appointed by the Chairman of the Marathon County Board of Supervisors to study the organization of the Wausau Park Board and the Marathon County Park Commission for the purpose of combining these Commissions into a single unit. The Committee studied the problems of the dual boards having overlapping policy statements and efforts, as well as having separate personnel policies and financial procedures, over 8 months, with 11 meetings.

The report of that Committee recommended reorganization be accomplished by January 1, 1973, and that: 1) the Mayor of Wausau appoint three of the seven member Commission; 2) the City of Wausau transfer all Park Department personnel to the Marathon County Park Department; 3) the salaries of non-represented employees be shared on a fifty-fifty basis; 4) machinery and equipment continue to be purchased on a fifty-fifty basis; 5) for all else, the City contract services from the Marathon County Park Commission as budgeted; 6) certain city parks be transferred by lease to the county park system: Athletic, Oak Island-Fern Island, Radtke Point, Rib River and Sylvan Hill. On March 15, 1973, these recommendations were adopted by the Marathon County Board. The City adopted a similar resolution on Oct. 31, 1974, effectively abolishing at midnight, December 31, 1974, its park commission.

Wis. Stat. §27.075 was created and enacted as part of Chapter 33, Laws of 1973, published June 28, 1974, wherein counties were authorized broad authority to exercise city powers in city parks upon proper action by both the city and county legislative bodies (otherwise, counties only derived powers from the constitution or legislature and could not enforce city police powers in parks). Sub. (4) states, in part, “. . . Said . . . cities . . . are vested with all necessary power to do the things herein required, and to do all things and to exercise or relinquish any of the powers herein provided or contemplated. The procedure herein provided for the request or acceptance of the exercise of the powers conferred on the

county board in cities . . . is hereby prescribed as a special method of determining the local affairs and government of such cities and villages pursuant to section 3 of article XI of the constitution.” (Municipal home rule)

In total, the City has adopted two resolutions and the County has adopted three resolutions, with respect to the operations of the parks system:

City: File No. 71-0550, adopted October 31, 1974	County: 69-74, adopted October 29, 1974
File No. 83-0332, adopted March 22, 1983	30-83, adopted May 24, 1983
	54-92, adopted August 25, 1992

The final County resolution adopted an Agreement for City/County Park Governance and requires amendment by formal action of the respective governing bodies, and notice of termination by either party to be in writing and given no less than 12 months in advance of the proposed termination date.

On the City side, turning first to File No. 71-0550, the resolution adopted October 31, 1974, created a study committee: city and county park system – personnel committees to study employees.

On December 30, 1974, the County executed a “Park Lease” effective January 1, 1975 for 99 years for two parks for \$10 each per year, due January 1.

Effective December 31, 1974 at midnight, the **Wausau Park Board** was combined with the **Marathon County Park Commission** into a single unit

- City parks employees transferred to County
- City and county abolish respective park commissions as presently organized and constituted
- County creates Park Commission under 27.075 who shall assume *the powers and duties of both the city and the county, as provided in Sections 27.02-.06; 27.08-.15; and 66.527 (now s.66.0123)*
- Parties share non-rep employees’ salaries and benefits 50/50 for 13 listed positions in 1975; thereafter, readjust cost sharing to conform to the facts
- Parties share equipment and machinery purchases 50/50
- City contract services from the Park Commission as budgeted
- Parks “transferred” by lease to “county park system”: each shall execute leases for Athletic and Sylvan Hill: Athletic (\$10/year), Oak Island-Fern Island, Radtke Point, Rib River and Sylvan Hill (\$10/year).

On April 14, 1975, a Resolution was passed by the Common Council, deleting references to Athletic Park in para. 10 of the joint resolution; and that para. 11 be deleted and replaced with: “The City shall retain policy and police powers jurisdiction over Athletic Park until such time as the above (deed restriction on use of Park) can be resolved; this period of time not to exceed one year.”

On July 8, 1975, a Resolution was passed by the Common Council to delete para. 10 from the Joint Resolution adopted October 13, 1974, re: City-County Park Department, and add Sylvan Hill to para. 11 of the same Resolution.

On March 22, 1983, the City of Wausau Common Council passed a Resolution, File No. 83-0332, requesting the County Board of Supervisors recommend changes to, and adopt and enforce City ordinances that regulate use by the public of the Wausau Park System; it further recommended certain ordinances be adopted by the county; and limiting that enforcement authority to "City parks" (all lands and water acquired by the City for park or recreational purposes or placed under the jurisdiction of the Marathon County Park Commission and include without limitation, parks, beaches, swimming pools, and privately-owned lands, the use of which has been granted or leased to the City for park, recreational or like public purposes).

Likewise, on May 24, 1983, the County Board of Supervisors passed a Resolution, #30-83, assuming the exercise of authorities and functions as set forth in the City resolution just passed.

On October 2, 1989, a draft agreement was prepared which at that time, purported to be a contract for the purchase of services from the County park department, to be provided to the City. File notes reflect a meeting of the County Park Commission on October 10, 1989, at which the County Administrator gave a presentation on problems and issues, such as accountability, and insurance. The City was discussing the setting of policy by the City, and more input being provided by aldermen.

The "Park Reorganization Committee" of the City met for the first time on January 16, 1990, to select a chairman, discuss the historical relationship to the Park Commission and discuss future options for future policy making.

A draft Resolution dated October 12, 1990, resolves to rescind the current arrangement with the County for park services, provide for a City Park Committee and for a s. 66.30 (now 66.0301) agreement with Marathon County. The draft acknowledges the powers and duties of the City with regard to City park operations lie with the Marathon County Park Commission, pursuant to Wis. Stats. S. 27.075, but to more appropriately and adequately fulfill the requirements and desires of the City residents for park and recreation services, contracting with the County for certain services offered by the Park Department, within the context of and as a part of a comprehensive City park and recreation program, would offer the most benefit to the City residents. It resolved to rescind the provisions within Resolution 71-0550, adopted October 31, 1974, effective January 1, 1992; empower the Board of Public Works with the statutory authority to exercise the duties and responsibilities of park operations; establish a City park committee by ordinance, made up of 7 members, of which 3 would be aldermen, to make recommendations to the council on all park operations; authorize and direct officials to negotiate an appropriate intergovernmental agreement for the provision of certain park services to be performed by the County for the City and for payment therefor.

A section appearing in the November 29, 1990 Comprehensive Park and Recreation Area Plan, entitled "Jurisdictional Transfer of Parks," references that the County proposes ownership and maintenance of D.C. Everest and 10th Street Parks be transferred to the City and that the City transfer ownership of Sylvan Hill Ski Area and Oak Island-Picnic Island community park to the County. Additionally, it proposed transferring Athletic Park and proposed Holtz-Krause sports complex to the County park system.

"Before jurisdictional transfers occur, the City should carefully weigh both the positive and negative aspects related to any jurisdictional transfers. Accepting additional park lands from the County will involve additional expenses for the maintenance and improvements that are currently the responsibility of the County. On the other hand, the City will have complete control over the development and improvement of the parks.

Relinquishing jurisdiction of a park would also diminish the City's financial obligation to maintain that park. However, without a well written transfer agreement Marathon County might reduce maintenance and improvement of the park and diminish its overall quality. Before any City parks are transferred to Marathon County well written, concise agreements should be drafted to insure that the City's interests are protected from the financial and political changes occurring at the County level."

On February 26, 1992, the City's Public Health and Safety Committee considered an ordinance creating City Park Committee and related actions regarding City governance of parks. Then Mayor Robinson explained that he had discussed over the years the need to increase the role of city involvement in determining the future for City parks; a motion to bring the ordinance back to the next meeting passed unanimously.

On March 25, 1992, the draft ordinance was considered. The official minutes of that meeting of the Public Health and Safety Committee reflect that "Mayor Robinson stated that we currently have an eight person committee consisting of four aldermen and four citizens. This committee has not met very often. We felt that it was important that additional direction be given to the future planning of parks and recreational activities in the City. . . . We are proposing . . .to try and expand participation in future planning of parks and recreational activities in the City. We would not tinker with the current City/County Park Commission but to insure some continuity we would have two of the three people who serve on that commission also serve on this committee. We hope that with this we would have additional citizen and aldermanic involvement in the parks planning and recreational planning. Right now we have no real parks plan, this would change the focus and provide the continuity needed."

On April 14, 1992, an ordinance creating Chapter 2.85 – City Parks and Recreation Committee – was introduced, but not passed by Council. It was referred back to the Public Health and Safety Committee where it died. It provided for an 8 member committee, consisting of 4 alders and 4 citizens, with no less than two members who would also be members of the Marathon County Park Commission. The draft ordinance listed the powers, duties and functions of the committee as follows:

- To make policy recommendations with regard to park and recreation services to the common council
- To receive input from citizens concerning park and recreation services and operations and to make corresponding recommendations with regard to those services and operations to the common council.
- To conduct hearings and to make investigations into the desired level and quality of park and recreation services and the costs and benefits of those park and recreation services
- To develop a long-term plan outlining the identified and projected park and recreation needs.

(However, it is listed in WMC 2.16 as a standing committee.)

An Agreement for Park Services was drafted in May of 1992.

On August 25, 1992, the Marathon County Board of Supervisors adopted Resolution #R-54-92, regarding an Agreement Clarifying City-County Park Governance, wherein it approved a two-page Agreement, meant to clarify the selection process for park commissioners and governance of city parks. While I do not find a corresponding City Council Resolution, the Agreement is signed by both the City and County. The Agreement provides for a seven (7) member County Park Commission appointed by the County Administrator and confirmed by the County Board, consisting of 3 Common Council members

recommended by the Mayor, 3 County Board Supervisors residing outside the City limits, and one member who shall be neither a Board or Council member, but mutually agreed to by the County Administrator and Mayor. It further states that the County Administrator shall consult with the Mayor of Wausau in any matter pertaining to the hiring, termination, discipline, performance evaluation, or other personnel matter involving the County Director of Parks, however the decision of the County Administrator shall be final under [statutory authority].

Then Mayor Linda Lawrence inquired about the creation of a city park committee in April 2002 and was advised that a simple majority of the Council could create whatever sort of committee it wished – a standing committee, or a citizen/alder committee (now a “special committee”). She was also advised that it was possible to leave the arrangement with the County with proper notice. At the May 8, 2002 meeting of the Wausau/Marathon County Park Commission, the minutes reflect that Duncanson (Bill) explained that Mayor Lawrence created a City Park and Recreation Committee to increase advocacy of park and recreation needs on City Council. It is a 5-member standing committee. “Duncanson discussed potential opportunities and limitations that come with the new committee.”

On June 12, 2002, the newly minted committee met and then City Planner Joe Pribanich discussed the last citizen survey conducted in 1997 of the City Recreation Plan. Duncanson mentioned that to that date the Park Department had been facility based and that recreation programs were not emphasized. Pribanich added that there was a need to revisit the goals as defined in the various documents because establishing goals is a requirement of the plans. A list of goals and issues was to be compiled by the next meeting.

At their July 10, 2002, meeting, Brad Karger attended and asked the committee to provide him with three, very specific, well-defined targets of improvement for the Park Department, if the City were not completely satisfied with its services, along with its indicators of success for the three targets. Mayor Lawrence indicated the purpose of the standing committee was to foster a better understanding of park issues and better advocacy for park and recreation programs. Joe Pribanich distributed and detailed the City of Wausau park and recreation planning goals he compiled that have been identified in several City planning documents over the last 20-25 years:

- Wausau Plan: A View to the Future (1996)
- River Edge Master Plan (1995)
- City of Wausau Comprehensive Park and Recreation Area Plan (1990)
- City of Wausau Land Use Plan (1983)
- Comprehensive Plan for Wausau Park System (1976)
- Envision Marathon (December 2000 Action Report)

He said the City Planning Commission, this committee and the public would be involved in the recreation planning component of the comprehensive planning process at the county level recently undertaken and for which a consultant was hired.

At their September 19, 2002, meeting, the committee adopted the County Park Department’s mission statement as their own: “To provide diversified park and recreation facilities and programs that will meet the needs of present and future residents and to preserve and enhance important natural, historical and scenic features within the City of Wausau.” The committee expressed its intention to complete a Comprehensive Outdoor Recreation Plan by year-end. It should include a definition of the role of staff and the committee, as well as identify issues.

On April 16, 2003, the City and County entered into an Agreement for the Assignment of Liability for Acts of the Marathon County Parks, Recreation, and Forestry Department Employees, which expired April 16, 2013. That Agreement renews automatically unless terminated by one of the parties. The Agreement is silent as to the term of the renewal

In June of 2003, under then Mayor Linda Lawrence, the County was noticed that city staff was undertaking a study of the advisability of internalizing city park maintenance functions with the Public Works Department.

On August 1, 2011, I wrote an opinion for the Parks and Recreation Committee Chair regarding the steps it would take to dissolve the agreements by which the city and county joined services in operating a joint parks department function.

Ordinances:

Under the Marathon County Ordinances, Section 2.06(12) establishes the Marathon County Park Commission and lists as its duties and responsibilities under (c):

1. Monitor, preserve and protect the County's open space, water, historical, cultural, natural and economic resources.
2. Determine and recommend recreational and tourism programs within the County.
3. Recommend policy and funding for establishing and implementing park and recreation programs and facilities.
4. Monitor and recommend policy for the development and maintenance of recreation trails including County-sponsored trails and State-funded trails.
5. Make rules and recommend ordinances for the regulation of the use and enjoyment of the County parks, trails and recreation lands.

Under Section 19.15(1)(a), the term "Park and Recreation Committee" composed of five members, is the committee of jurisdiction for the City of Wausau parklands, hereafter referred to as the "Committee" in this subchapter.

(c): The Wausau and Marathon County Parks, Recreation, and Forestry Department, whose head shall be the Director, shall be the administrative or executive agency of the Committee. The Director shall be the authorized agent of the Committee as referred to in this subchapter.

(2): The provisions of this subchapter shall apply to all lands, structures and property owned, leased or administered by the City of Wausau and under the management, supervision and control of the Committee.

(6) Rules and regulations may be made governing the use and enjoyment of all lands, structures and property owned, leased or administered by the City of Wausau and under the management, supervision and control of the Committee.

Under the Wausau Municipal Code, only Chapter 9.20 addresses "Park Regulations." Nowhere is the Park and Recreation Committee mentioned, except in a list of standing committees of the Common Council in Chapter 2.16. The title of the chapter contains the following footnote:

"For statutory provisions granting a city park board certain board regulatory powers, see §27.08, Wis. Stats."

However, the City does not have a City Park Board, pursuant to s. 27.08.

Conclusion:

Effective December 31, 1974, the City transferred its powers and duties with respect to city parks to the county. The City must give 12 months' advance notice of termination to rescind the jurisdictional transfer. The City added "Parks and Recreation Committee" to its list of standing committees in Chapter 2.16 of the ordinances, but no report describing the duties of the committee could be found. Likewise, no list of those functions transferred to the County, retained by the City, or shared jointly, could be found. Additionally, no agreement exists as to the procurement of services from the County, in exchange for the money budgeted for county use with respect to city parks.

Recommendation:

With the advent of the standing Parks and Recreation Committee of the City of Wausau, the question becomes one of authority and purpose. If the city has indeed transferred all of its jurisdictional authority to manage City parks to the County, the purpose of the committee should be more clearly delineated, so as not to duplicate or contradict County control and management of city parks.

With the turnover of staff over the years, it is recommended that a review be conducted of all resolutions, agreements, leases and ordinances, and the functions performed by each party, for compliance with Section 27.075, Wis. Stats., which provides that both a city may request, and a county may assume and exercise, " (1) certain powers conferred upon it for the purpose of governing, managing, controlling, improving and caring for public parks, parkways, boulevards and pleasure drives, as evidenced by resolutions *designating the particular park function, duty or act, and the terms, if any, upon which the same shall be exercised by the county board. Such resolution shall state whether the authority or function is to be exercised exclusively by the county or jointly by the county and city, and shall also state that the exercise of such power by the county is in the public interest.*"



New / Expanded Position Request Form

Department: Parks, Recreation & Forestry **Requested by:** Jamie Polley, Director

Nature of Request (mark one)

Create/Add a position(s) in the department **Number of Positions:** 1

Create and abolish a current position

Expand/change FTE of a current position

Current FTE: [Click or tap here to enter text.](#) New FTE: [Click or tap here to enter text.](#)

Other: [Click or tap here to enter text.](#)

Classification Title/Working Title: Maintenance Technician **DBM:** B21

(If unsure of classification or DBM list TBD "to be determined")

Attach: Job description of requested position **-OR-** Position Description Questionnaire (PDQ)

Summarize the major functions of the proposed position: This work involves maintaining park buildings, grounds, and facilities. Work involves performing semi-skilled maintenance and construction tasks, as well as equipment operation tasks including trucks, tractors, and similar equipment. Employee will also perform custodial work at parks and facilities. Work is performed in accordance with oral or written instructions. Work may involve leading and guiding seasonal employees. Work assignments are generally given by a supervisor daily, with employees expected to perform routine and non-routine maintenance tasks in accordance with these instructions. Work is occasionally reviewed by direct observation of work in progress, but more typically by inspection of completed work. Employees will have frequent public contact and interaction with a variety of park users. Staff may be assigned to various programs or facilities.

Please indicate: FT or PT

Hours per pay period: 40

Start Date: 2023 Budget Year (01/08/2023) **-OR-** **Projected Start Date:** [Click or tap here to enter text.](#)

Reason for Request/Justification:

(Reason for the new position or expanded FTE. Describe the need for this position including the benefit to the department/county if this position is filled and the negative impact if not filled.)

At current staffing levels the Department cannot adequately manage existing park and forest lands, facilities and outdoor recreation opportunities, much less prepare for the needs of future generations. This position will allow us to enhance our maintenance of our existing lands and facilities which in turn enhances the County's quality of life. This position will help to distribute the work load among the current staff. One additional maintenance technician will allow staff to address more pressing issues enhancing the quality of our park maintenance ultimately leading to enhanced customer service and improved facilities.

If the proposed position is not approved the Parks, Recreation and Forestry Department will continue to not be able to effectively maintain programs, events, customer service, or facility operation and services much less additional programs, events or facilities that are currently under construction, about to be constructed or are in advanced planning stages. Program and facility capabilities will not be optimized. Consequently, the availability of high quality, easily accessible, affordable outdoor recreation, sports tourism and special events will diminish. Marathon County and the City of Wausau will not maintain its current quality of life and the economic benefits of being a preferred place to live, work, play, and visit will correspondingly diminish.

COSTING: What is the anticipated total cost of this position: \$59, 904 split 50/50



New / Expanded Position Request Form

(Include salary; benefits; office space, remodeling, furniture, and equipment; travel; and other applicable costs. If you need assistance in calculating cost, contact Employee Resource for salary and benefits.)

Please list additional costs anticipated: [Click or tap here to enter text.](#)

FUNDING: Please explain how the position will be funded:

County tax levy: [Click or tap here to enter text.](#) % Of total costs: 50

Outside funding: City of Wausau % Of total costs: 50

Source and length of outside funding: Annual

Will this request require NEW funding in 2023 or current year?

YES, take to Committee of Jurisdiction / HR Finance Committee / County Board-
Annual Fiscal Impact (full year): Park Commission May 31, 2022

If midyear: Estimated cost for remainder of 2022: [Click or tap here to enter text.](#)

******Requestor should prepare Resolution Draft to share with Committees at this time.**

NO Request may be taken to committee before 2023 Budget Process.
Discuss with Employee Resource Director and County Administrator.

Please attach any additional supporting documentation such as full job description, costing, or proposed change to organization chart.

Requested by: Jamie Polley

Date: 5/27/22

Department Approval: [Click or tap here to enter text.](#)

Date: [Click or tap here to enter text.](#)

Completed request should be forwarded to Employee Resources: Molly Adzic, Boly Vang and Sue Fox

Maintenance Technician
(Parks Maintenance Worker)
Payroll Occ Code: 5231
DBM Rating: B21
FLSA: Non-Exempt
Reports to: Operations Manager

Position Summary:

This work involves maintaining park buildings, grounds, and facilities. Work involves performing semi-skilled maintenance and construction tasks, as well as equipment operation tasks including trucks, tractors, and similar equipment. Employee will also perform custodial work at parks and facilities. Work is performed in accordance with oral or written instructions. Work may involve leading and guiding seasonal employees. Work assignments are generally given by a supervisor daily, with employees expected to perform routine and non-routine maintenance tasks in accordance with these instructions. Work is occasionally reviewed by direct observation of work in progress, but more typically by inspection of completed work. Employees will have frequent public contact and interaction with a variety of park users. Staff may be assigned to various programs or facilities.

NORMAL HOURS OF WORK:

Spring, Summer, Fall Season:

7 am - 3 pm Monday-Friday with availability for evening and weekends as needed for scheduled tournaments, special games, events, or other department service obligations.

Winter Season:

May be assigned a variety of shifts other than warm season schedule.

7 am to 3 pm; 10 days on, 4 days off, including alternate weekends and some holidays.

Or

3 pm to 11 pm; 10 days on, 4 days off, including alternate weekends and some holidays.

Examples of Work Performed:

- Pool maintenance includes balancing water, pre-season start-up, and winterization.
- Arena work involving ice maintenance operations including operating an ice re-surfacer machine (Zamboni).
- Participates in athletic field game preparation for scheduled events. Line athletic fields as needed for scheduled game events.
- Prepares and maintains athletic fields by performing turf-grass management skills including: mowing, edging, laying sod, aerating, topdressing, irrigation operation and maintenance, clay maintenance, infield maintenance, fertilizing, herbicide and pest control applications.
- Performs routine park maintenance and custodial work including mowing, flooding ice rinks, painting, collecting and disposing litter, sweeping and mopping park buildings, cleaning restrooms, raking leaves, snow removal from sidewalks and park roadways, and putting up/taking down snow fences.
- Performs maintenance of park buildings and facilities including basic carpentry, roofing repairs, basic plumbing, masonry, and/or electrical work.
- Provide exceptional customer service to park and facilities users and special event organizers.
- Interact frequently with the public and persons contracted to use the park regularly in providing services and assistance and enforcing park rules.
- Inspects and prepares facilities and grounds for public and private use.
- Inspection and maintenance of playgrounds.

- May operate all types of equipment including tractors, loaders, skid steers, Zamboni, trucks and similar equipment. Equipment may be used inside buildings and sometimes near persons using the park facilities.
- Inspects parks to maintain good order and condition of facilities.
- Performs basic maintenance of park buildings and facilities.
- Develops solutions to work issues that add value for our customers.
- Participates in establishing professional development goals that are supportive of broader County goals.
- Maintains regular and predictable attendance; works extra hours as required.
- May leads seasonal employees engaged in related work.
- Performs related work as required.

Knowledge, Skills, and Abilities:

- Knowledge of pool maintenance or ability to successfully complete training and Aquatic Facility Operator certification.
- Knowledge of the tools, methods, and materials used for performing painting, routine carpentry, and plumbing duties.
- Skill in the use and care of hand and power tools.
- Ability to effectively communicate with park users.
- Ability to understand and follow written and oral instructions.
- Knowledge of the methods and techniques involved in custodial work.
- Knowledge of the applicable safety practices and procedures of the maintenance/construction trade.
- Knowledge of the methods and techniques involved in landscaping.
- Ability to operate trucks and equipment effectively, safely, and efficiently.
- Ability to work independently.
- Ability to lead and guide the work of seasonal employees.
- Ability to work outdoors in adverse weather conditions.
- Understands the County's and department's mission, core values, plans, and priorities for the future.
- Ability to contribute to a positive work culture that fosters excellent customer service and teamwork.

Qualifications:

High school graduation or equivalent. Must have one year responsible paid work experience in building, grounds, and facilities maintenance using a variety of maintenance and custodial skills. Experience with a variety of equipment is desired.

NECESSARY SPECIAL QUALIFICATIONS: Possession of a valid Wisconsin Class A Commercial Driver's License (CDL) without air brake restrictions; OR pass the required Class A CDL without restrictions on air brakes within 120 days of hire. Probationary employees failing to meet the CDL requirements may be terminated. Also required is a driving record that meets County standards.

Occupational Exposure:

This classification may have occupational exposure to bloodborne pathogens. See the Marathon County Park Department Exposure Control Plan for more specific information.

Selection Procedure:

In person interview and successful completion of background check and physical evaluation.

Compensation:

\$16.16 - \$18.99 - \$21.82

Parks, Recreation & Forestry

An Overview



Wausau & Marathon County
**Parks, Recreation
& Forestry**

Overview

1. Department Mission, Structure and Overview
2. Building the Park System
3. Wausau/Marathon County Parks and Recreation Foundation
4. Needs/Challenges
5. Initiatives/Future Projects
6. Customers

Mission Statement

Marathon County's Vision/Mission

Marathon County will be a preferred place to live, work, visit and do business, with the overarching goals of being the healthiest, safest and most prosperous county in the state.

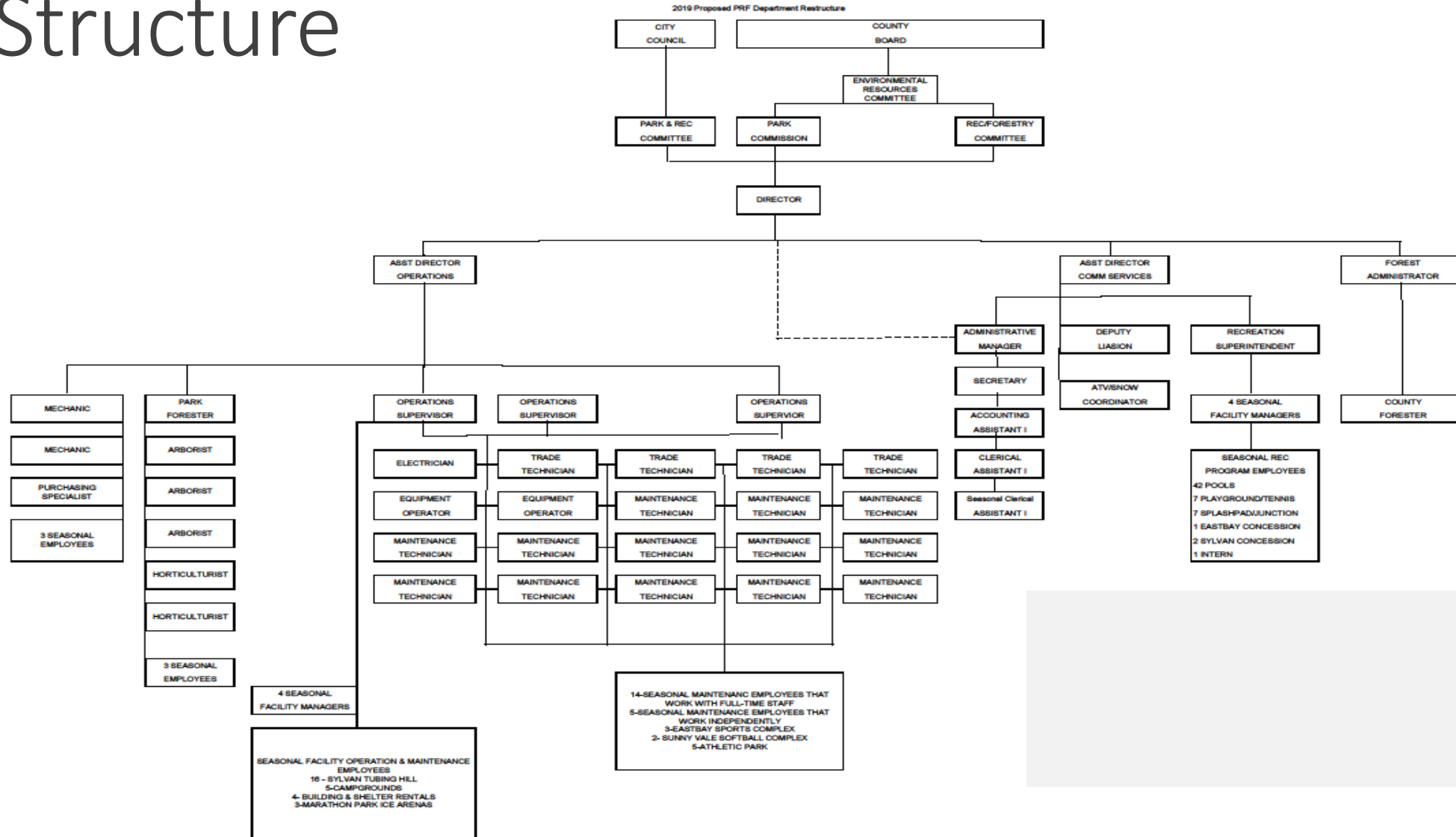
Parks, Recreation and Forestry Mission Statement:

Adaptively manage our park and forest lands for natural resource sustainability while providing healthy recreational opportunities and unique experiences making our County a desirable place to live, work and play



Wausau & Marathon County
**Parks, Recreation
& Forestry**

Parks, Recreation & Forestry Department Structure



Wausau & Marathon County

OPERATES TWO SEPARATE PARK SYSTEMS (SINCE 1924) & COUNTY FOREST SYSTEM – CITY CONTRACTS W/ MARATHON COUNTY

Marathon County:

- 17 County Parks ranging from 0.42-1453 acres
 - Picnicking, hiking, swimming, fishing
 - Camping – 162 sites + 2 group sites
- 10 County Forests ranging from 269-9433 acres
- Specialized facilities
 - Two Ice Arenas
 - Shooting Range
 - Peoples Sports Complex
 - SunnyVale Softball Complex
 - Marathon Park - Marathon Junction, Splash pad, train, fairgrounds, pickleball
- Recreation Programs

City of Wausau

- 34 Parks ranging from 0.2 to 73 acres
- Urban Forestry Program - approx. 25,000 street trees
- Recreation Programs
- Specialized facilities
 - Sylvan Tubing Hill and Mountain Biking
 - Athletic Park
 - 3 outdoor aquatic centers
 - Whitewater Park
 - Skate Park
 - 400 Block
 - Boat Launches



Wausau & Marathon County
**Parks, Recreation
& Forestry**

Wausau & Marathon County

Annual Operating
Budget:
Total - \$4.97 Million
Dollar Budget
Split City/County

FUNDING

Marathon County:

Expenditures = \$3,329,169

Revenue = \$1,201,967

Levy = \$2,127,202

Department also receives a number of Forestry and Snowmobile/ATV grants

Includes enterprise funds (Nine Mile, Peoples Sports Complex, Marathon Junction)

All funded through Marathon County – City is billed for City services

City of Wausau

Expenditures = \$3,259,450

Revenue = \$421,595

Levy = \$2,837,855

Includes 400 Block Fund (Riverlife & 400 Block)

Capital projects for both City/County funded separately



Wausau & Marathon County
**Parks, Recreation
& Forestry**

Serving Wausau and Marathon County

Quality of Life:

- Parks
- Open Space
- Active and Passive Recreation Opportunities
- Code Enforcement

Tourism

- Unique facilities
- Event set up and take down
- Facility coordination

Natural Resource

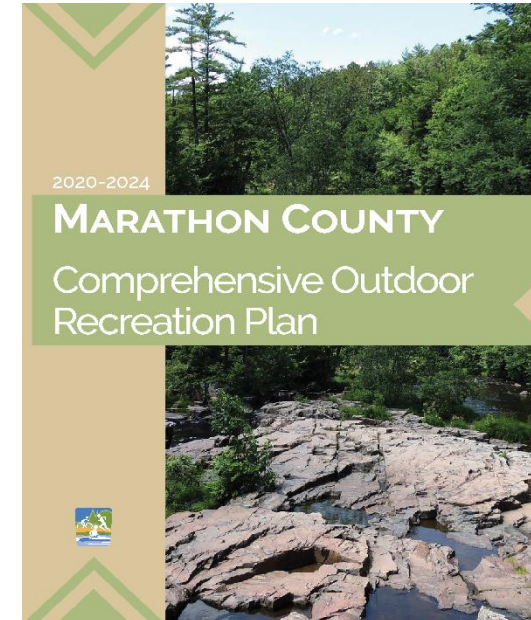
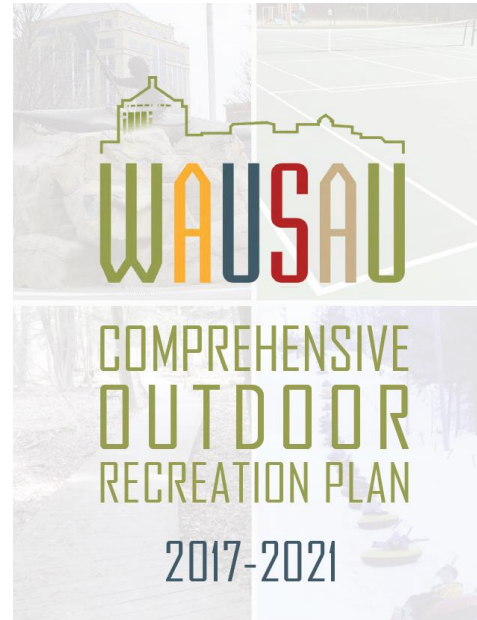
- Sustainable Forestry
- Horticulture
- Water Quality
- Wildlife Habitat



Wausau & Marathon County
**Parks, Recreation
& Forestry**

Building Wausau and Marathon County Parks

- County’s Goal: healthiest, safest, and most prosperous.
- Community needs (under served populations).
- Trends and unique opportunities.
- Partnerships and local resources.



Wausau Comprehensive Outdoor Recreation Plan 2017-2021

Marathon County Comprehensive Outdoor Recreation Plan 2020-2024

Marathon County Forest Comprehensive Land Use Plan -15 Year



Wausau & Marathon County
**Parks, Recreation
& Forestry**

Building Wausau and Marathon County Parks

- Grants
- Donations of park improvements and/or funds
- Sponsorships - People State Bank (Peoples Sports Complex)
- Contracts – Wausau Woodchucks, Wausau Cyclones
- Partnerships
(volunteer hours for maintenance + funding)
 - Central WI Off-Road Cycling Coalition (CWOCC)
 - Wausau Nordic
 - Wausau Area Pickleball
 - Wausau Area Disc Golf Association
 - Wausau Canoe & Kayak Corporation
 - MC United Soccer
 - Wausau Area Youth Hockey
 - Wausau Area Baseball



Wausau & Marathon County
**Parks, Recreation
& Forestry**

Building Wausau and Marathon County Parks

Collaborations:

We seek collaborations with organizations that have a similar vision as the County, City and Department

Partners also seek us out based on our mission

Examples:

- Marshfield Clinic
- Aspirus
- Wausau Noon Optimist
- Kiwanis
- Local municipalities (Kronenwetter, Weston, Marathon City)
- Other City/County Departments (pop up splash pad)



Wausau & Marathon County
**Parks, Recreation
& Forestry**

Wausau/Marathon County Parks and Recreation Foundation

Our Mission

To promote the common good and general welfare of the people of Marathon County, Wisconsin.

We fulfill our mission by:

- Lessening the burdens of government by protecting the natural resources and combating deterioration of public buildings, monuments, or works in the communities within Marathon County;
- Bringing about civic betterments and social improvements within Marathon County

Funding: Donations, Ironbull, fundraising

Our Purpose

The development of programs to:

- Focus public attention on the Wausau and Marathon County Park Systems' facilities and needs,
- Stimulate and encourage the gifting of funds, land, endowments and bequests to the Marathon County Park Commission, and
- Receive, hold, manage, use and dispose of funds and properties of all kinds, whether given absolutely or in trust, for the benefit of the Wausau or Marathon County Park Systems.



Wausau & Marathon County
**Parks, Recreation
& Forestry**

Needs/Challenges

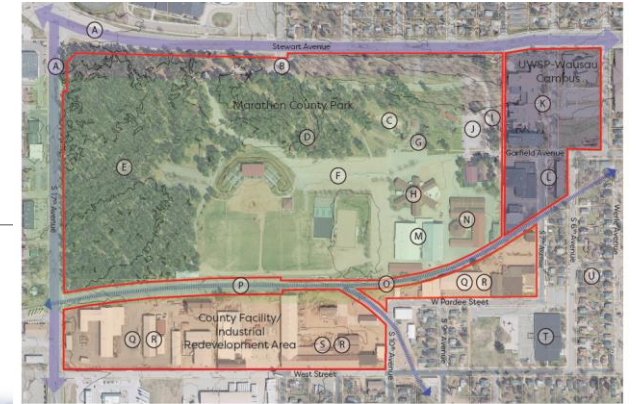
- Staffing and wages
- State Levy Limits
- Aging facilities
- Increased demand for parks
- Community collaboration on sports facilities



Wausau & Marathon County
**Parks, Recreation
& Forestry**

Initiatives & Future Projects

- Kayak/Bike share programs
- Snowmaking & Fat tire biking at Nine Mile
- Enhanced Sponsorships
- Playground Replacement
- Westside Master Plan
- Trail Coordination Wausau to Merrill
- Work with Friends of Mountain Bay to Extend Trail West
- Master Plan of Rib Falls Park
- River Edge Improvement in Coordination with City Planning
- Department Consolidation and Operations (new site)
- Establish Parks, Recreation & Forestry Sustainability Plan
- Master Plan and Development of Brokaw Park Property
- ARPA Projects – Showers at Campgrounds, update Skate park



Wausau & Marathon County
**Parks, Recreation
& Forestry**

Customers

- Facebook 4,480 followers
- City parks mainly utilized by City/County residents
- Campgrounds & Nine Mile heavily used by WI residents and neighboring states
- Conduct participant surveys after each recreation program
- Sought community input with Outdoor Recreation Plan update



- Safety – Partnership with MC Sheriffs office and Wausau Police Department



Wausau & Marathon County
**Parks, Recreation
& Forestry**

What We Wish We Could Do Better?

- Update facilities
- Provide more staffing
- Provide more Recreation Programs
- Become a bigger partner in community events



Wausau & Marathon County
**Parks, Recreation
& Forestry**

CELEBRATING
100
YEARS
1920-2020

Thank you



Questions?



Wausau & Marathon County
**Parks, Recreation
& Forestry**

WMC Parks, Recreation & Forestry

2021 Year in Review



In 2021 our parks saw a significant increase in usage for a second year in a row compared to years prior to COVID-19. During the COVID-19 pandemic our citizens turned to our 3,401 acres of parkland and 30,714 acres of County Forest to recreate.

-Our department has 43.75 FTE and 150+ seasonals.

-General operating budget of \$6,378,828 in expenditures and \$1,399,315 in revenues

- **SUCCESSFUL 100+1 ANNIVERSARY CELEBRATION AUGUST 28, 2021**
- **SECURED 5 YEAR SPONSORSHIP BY PEOPLES STATE BANK OF SPORTS COMPLEX**
- **FULLY IMPLEMENTED NEW RECREATION SOFTWARE – CIVICREC**
- **PLANTED 430 TREES, REMOVED 187 NON-ASH TREES & 420 ASH TREES, TREATED 865 ASH**
- **ESTABLISHED 15 YEAR EMERALD ASH BORER MANAGEMENT PLAN**
- **NEW PLAYGROUND EQUIPMENT IN 3M PARK, SCHOLFIELD & MARATHON PARK**
- **PARTICIPATED IN THE UPDATE TO THE RIB MOUNTAIN STATE PARK MASTER PLAN**
- **896 SHELTER RENTAL DAY AND 110+ EVENTS OPEN TO THE PUBLIC**
- **308.5 ACRES AND 81,920 FT OF TRAILS MOWED = 7,676 HOURS OF MOWING**
- **2985 TOTAL PASSES SOLD (DISC GOLF, BIKING, BOAT LAUNCH, SKI, SHOOTING RANGE, ETC)**

TIMBER SALES

9 sales sold totalling 633 acres with
15,824 cords

\$653,057.00

Gross revenue
\$457,140 Net Revenue to County



CAMPING

Camping had its busiest season in
many years

18%



Increase in revenue over what was
budgeted.

NEW PROGRAM

1st Annual Pickleball Tournament
46 teams = 80 participants

72 Games

Weekly pickleball program had 64
participants

SPONSORSHIPS

New Sponsorship Policy and Park
Naming Guidelines Established

Peoples
STATE BANK

5 year contract with 5 year renewal
for Peoples Sports Complex




Wausau & Marathon County
**Parks, Recreation
& Forestry**





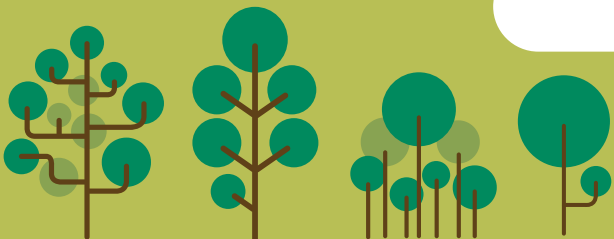
2021 Year in Review - Projects

CITY PARK PROJECTS

- 34 PARKS, 26,000 STREET TREES
- COMPLETED PLAYGROUNDS AT PLEASANT VIEW PARK AND FOREST PARK.
- PLANNED AND ORDERED PLAYGROUND FOR RIVERSIDE PARK
- RECEIVED COMMUNITY DEVELOPMENT BLOCK GRANT FOR RIVERSIDE PARK PLAYGROUND
- VEGETATION MANAGEMENT AT BARKER STEWART ISLAND 
- PHASE IV OF THE ATHLETIC PARK RENOVATIONS COMPLETED
- RECEIVED CATASTROPHIC STORM GRANT \$13,000
- SYLVAN HILL PUMP HOUSE UPGRADE AND SECOND SNOW GUN
- CITY DOG PARK OPENED
- 15 MEMORIAL BENCHES INSTALLED
- MOVIN WITH THE MAYOR EVENTS - PICKLEBALL, YOGA, ROLLER SKATING
- 506 SWIMMING LESSON STUDENTS, ADDED ADULT & EVENING LESSONS (50% INCREASE)
- REPLACED ALL DOWNTOWN FLOWER BASKETS WITH SELF WATERING BASKETS
- PLANNED AND INSTALLED NEW LANDSCAPING AT CITY HALL

COUNTY PARK PROJECTS

- 17 COUNTY PARKS AND 10 COUNTY FOREST UNITS
- ELECTRICAL UPGRADES TO BIG EAU PLEINE CAMPGROUND
- CULVERT INSTALLATION TO BIG EAU PLEINE ROAD FOR RECONSTRUCTION
- INSTALLED AMCO VAULT TOILET AND ACCESS ROAD
- NEW RADIANT HEAT IN ICE RINK 1 OF THE ICE ARENA
- PLANNED AND ORDERED PLAYGROUNDS FOR BIG EAU PLEINE PARK
- COMPLETED UPDATE TO SUNNYVALE SOFTBALL COMPLEX FENCES, CONCESSION, ETC.
- REPLACED THE RUBBER FLOORING OF THE ICE ARENA
- SUCCESSFULLY PARTNERED WITH THE FAIR TO PROVIDE FAIR OPERATIONS
- REPLACED ALL COUNTY PARK/FACILITY WALL MOUNTED DRINKING FOUNTAINS
- PROCESS OF ACQUIRING 39.085 ACRES OF COUNTY PARK LAND
- ACQUIRED 40 ACRES OF FOREST LAND





WMCPRF 2022 Work Plan

Plans to Complete

- Update City Comprehensive Outdoor Recreation Plan
- Westside Master Plan - MSA Hired as Consultant
- Sustainability Plan
- Rib Falls Park Master Plan



- Treat & Remove Ash Trees
- Plant 400+ trees

Forestry Work Plan Including:

- Est. & advertise 625+ acres of timber for sale & Admin 33+ sales.
- Acquire Land & Land, wildlife & recreation management

Research

Snowmaking & Fat Tire Biking at Nine Mile



Secure Field Sponsors PSC

Playground Replacements



Blue Gill Bay
Mission Lake
Riverside
Lincoln Tot Lot

Dells of Eau Claire
Big Eau Pleine
Cherokee

County CIP

- Big Eau Pleine Road Repairs
- Cattle barns 1 & 2 Roof Replacement
- Mission Lake Parking Lot Repair
- Restroom Replacement @ BEP & DCE

Develop 5 Year CIP

Stewart Park Step & Wall Repair



Establish Long Term Replacement Schedule



City Small Projects

- Engineered Wood Fiber in Playgrounds
- 400 Block Assisted Listening Device
- ADA Showers & CO2 Injector Systems- Pools
- 3M Trail Construction
- Sylvan Hill Basement Doors
- 400 Block Stage Concrete Repair

City CIP

- Drinking Fountain Replacement
- Memorial Park Tennis Court Replacement
- Athletic Park Scoreboard

Expand Recreation Offerings

County Small Projects

- MPB Locker room & Entrance Doors
- Stonework at Dells of Eau Claire
- MPB Table & Chair Replacement
- Dells of Eau Claire Road Repairs

Finish Dog Park

