



MARATHON COUNTY PARK COMMISSION AGENDA

2nd ADDENDUM (3/1/2021) and 1st ADDENDUM (2/26/2021)

Date and Time of Meeting: Tuesday, March 2, 2021 at 10:30am

Meeting Location: Conference Room #5, 212 River Drive, Wausau WI 54403

The meeting site identified above will be open to the public. However, due to the COVID-19 pandemic and associated public health directives, Marathon County encourages Commission members and the public to attend this meeting remotely. To this end, instead of attendance in person, Commission members and the public may attend this meeting by telephone conference. If Commission members or members of the public cannot attend remotely, Marathon County requests that appropriate safety measures, including adequate social distancing, be utilized by all in-person attendees.

Persons wishing to attend the meeting by phone may call into the telephone conference beginning five (5) minutes prior to the start time indicated above using the following number: 1-408-418-9388.

Access Code: 187 248 9936 Password: Parks03022021 (7275703022021 from phones and video systems)

If you are prompted to provide an "Attendee Identification Number," enter the "#" sign. No other number is required to participate in the telephone conference

When you enter the telephone conference, PLEASE PUT YOUR PHONE ON MUTE!

Park Commission Members -

Commissioners: Connie Conrad, Dawn Herbst, Jean Maszk, Allen Opall, Pat Peckham, Rick Seefeldt, James Wadinski

***Marathon County Mission Statement:** Marathon County Government serves people by leading, coordinating, and providing county, regional, and statewide initiatives. It directly or in cooperation with other public and private partners provides services and creates opportunities that make Marathon County and the surrounding area a preferred place to live, work, visit, and do business. (Last updated: 12-20-05)*

***Parks, Recreation and Forestry Department Mission Statement:** Adaptively manage our park and forest lands for natural resource sustainability while providing healthy recreational opportunities and unique experiences making Marathon County the preferred place to live, work, and play.*

Agenda Items

1. **Call to Order**
2. **Public Comment Period – Not to Exceed 15 Minutes – Any Person Who Wishes to Address the Commission Must Provide, Name, Address and the Topic to the President of the Commission No Later than Five Minutes Before the Start of the Meeting.**
3. **Approval of the Minutes of the February 2, 2021 Park Commission Meeting**
4. **Policy Issues for Discussion and Committee Determination**
 - A. Discussion and Possible Action by Committee
 1. Presentation by the Wausau/Marathon County Parks and Recreation Foundation of a Voyageur Heritage Waterway Project
 2. Regarding the Establishment of a Naming Rights/Sponsorship Policy for Parks and Park Facilities
5. **Operational Functions Required by Statute, Ordinance or Resolution:**
 - A. Discussion and Possible Action by Committee
 1. None
 - B. Discussion and Possible Action by Committee to Forward to the Environmental Resource Committee for its Consideration
 1. Recognition of the Vogl Dam within the Dells of Eau Claire
6. **Policy Issues for Discussion and Committee Determination for Consideration by Environmental Resources Committee**
 - A. 2021 State Budget Items of Interest-(this item was added on 3/1/2021)

7. Educational Presentations/Outcome Monitoring Reports

- A. Woodmaking Video
- B. Park Update – Campgrounds, Bluegill Bay Park, Routine Operations
- C. Update on Disc Golf from Wausau Area Disc Golf Enthusiasts-(this item was added on 2/26/2021)

8. Announcements

- A. Next Meeting Date & Time, Location – Tuesday, March 30, 2021 at 10:30am at 212 River Dr., Wausau WI 54403, Room 5 or via Webex
- B. Future Agenda Items - Park Tour Dates

9. Adjourn

Signed /s/ Jamie Polley
Presiding Officer or Her Designee

Any person planning to attend this meeting who needs some type of special accommodation in order to participate should call the County Clerk's Office at 715-261-1500 or e-mail infomarathon@mail.co.marathon.wi.us one business day before the meeting.

FAXED TO DAILY HERALD

(Email/Fax City Pages, Marshfield News, Midwest Radio Group)

Date March 1, 2021 Time 9:30 am

Date February 26, 2021 Time 11:45 am

By Jodi Luebbe

THIS NOTICE POSTED AT THE COURTHOUSE

Date _____ Time _____

By _____

AGENDA SUMMARY

4A1. Discussion and Possible Action on a Presentation by the Wausau/Marathon County Parks and Recreation Foundation of a Voyageur Heritage Waterway Project

The Wausau/Marathon County Parks and Recreation Foundation's mission is to support the improvement of the park systems and recreation program offerings within Marathon County. The Foundation has been discussing a project that they would like to lead. The project in which they are pursuing is establishing river trails on the Wisconsin River (Voyageur Heritage Waterway), Lower Eau Claire River Trail, Big Rib River Trail and the Big Eau Pleine River Trail. Members of the foundation will present this project to the Commission and discuss how they feel this project will impact the health, wellbeing and quality of life of the community, the economic impact and the utilization of the assets Marathon County has to offer. Many of the areas that will be discussed already have access to the river and are in need of some upgrades, or historical signage. Other locations may need to be built.

The Foundation will plan, organize and complete the project seeking assistance from grants, donors and others.

The Park Commission is asked to review the presentation and discuss the proposed launches within Marathon County.

4A2. Discussion Regarding the Establishment of a Naming Rights/Sponsorship Policy for the Parks and Park Facilities

Naming requests of facilities and parks are becoming more common as new parks are constructed and amenities are added. Sponsorships are also becoming more important as we look to additional revenue sources. At this time the City of Wausau does not have a Naming Rights or Sponsorship Policy of parks and park facilities. Also, it has come to my attention that the County has a policy for naming, dedication, and sponsorship of Marathon County facilities, rooms and open spaces however the policy exempts parks and park facilities. Having a policy for parks and park facilities will establish the purpose, guidelines and criteria that the Committee and Commission can utilize to make an informed, impartial decision on the naming of City and County parks and park facilities. The Committee and the Commission will then recommend a naming request to the City Council/County Board.

Included in your packet is the County's policy and a draft park naming policy that I developed in my previous position. I would like the Committee to review each of these policies and discuss what components and criteria should be included into a specific policy for parks and park facilities. Staff will then compile the information and bring back a policy for adoption at a later meeting. Staff will also work with the City Attorney and Corporation Counsel on the development of such a policy.

5B1. Discussion and Possible Action Recognizing the Vogl Dam within the Dells of Eau Claire

Staff recently met Mr. Rob Kessen, the Great Grandson of C.C. Vogl, owner of several acres within what is now the east side of the Dells of Eau Claire. Mr. Kessen has a great deal of historical information of his family. The Vogl's owned and operated a dinner club in the Dells of Eau Claire. Along with the dinner club the area had a waterslide, carousel, and boat rentals. There is also documentation that Mr. Vogl built the original dam within the Dells. Doing further research the current dam is federally recognized as Vogl Dells Dam. A number of historical documents are included in your packet that refer to the dam construction, purpose, approvals, etc.

Mr Kessen is requesting a placard to be placed near the current dam that will instill the Vogl name on the dam and recognize his Great Grandfather. In our discussion we talked about two different types of placards; one with the name and established date of the original dam and current dam. The second sign would be more of an informational kiosk with some of the history of the dam and the area. The Commission is asked to review this request and provide staff with feedback and direction on the placard and/or the informational kiosk.

7A. Wood Making Video

The Park Commission will be presented with a short video regarding the department's wood making process.

7B. Park Updates

Campgrounds (BEP Park):

Staff is currently underway processing over 100 cords of firewood for camping season

Bluegill Bay Park:

Vegetation management; staff is using a forestry mulching head attachment on a tracked skid steer to remove undesirable invasive species (i.e. buckthorn, honeysuckle) in designated areas. Also include cutting back other species for "rejuvenation" of desirable species.

Routine Operations/Programs:

Outdoor Ice rink maintenance

Snow grooming operations; Nine Mile Forest and Sylvan Hill Recreation Area.

Snow removal operations; trails, sidewalks, roadways, parking lots.

Urban forestry program; tree trimming, removals.

Building and structure maintenance.

Shelter reservations and Special Events

Equipment maintenance and repair

DRAFT
MARATHON COUNTY PARK COMMISSION

Date and Time of Meeting: February 2, 2021 at 10:30 am

Meeting Location: Conference Room 5, 212 River Drive, Wausau WI 54403

Park Commissioners present: Connie Conrad, Dawn Herbst, Jean Maszk-(via webex), Allen Opall-(via webex), Pat Peckham, Rick Seefeldt-(via webex), James Wadinski

Staff present: Jamie Polley-Director, Marcus Aumann-Asst. Director of Community Services-(via webex), Greg Freix- Asst. Director of Operations-(via webex), Kurt Gibbs – County Board Chair-(via webex)

1. Call to Order – President Conrad called the Park Commission meeting to order at 10:30am. Official notice and the agenda for the meeting was posted publicly in accordance with the State statutes.

2. Public Comment – None brought forward

3. Approval of the Minutes of the January 5, 2021 Park Commission Meeting – Motion by Herbst, second by Seefeldt to approve the January 5, 2021 Park Commission meeting. Motion **carried** by voice vote, vote reflected as 6-0.

4. Policy Issues for Discussion and Committee Determination

A. Discussion and Possible Action by Committee

1. To Approve Changes to the Parks, Recreation, and Forestry Department 2021-2022 Facility and Program Fees - The 2021–2022 Facility and Program Fees were reviewed and approved by the Parks Commission on September 1, 2020. In December the department purchased a new Recreation Software that staff is currently working on setting up. The new software will allow for the majority of all passes, recreation programs, and facility rentals to be done online. As staff was setting up the fees in the new system inconsistencies and fee changes were identified. Polley discussed some of the changes which include raising the Nine Mile annual bike pass fee from \$25 to \$30, taking out the \$10 additional boat launch pass fee and charging \$30 for each pass, charging one fee for the group campground area, simplifying the family structure for disc golf, swimming, and skiing passes so that the first adult pass will cost full price and additional family members will be discounted, eliminating the student/youth rate to just a youth rate, adding a youth category to disc golf passes, simplifying cross-country running races so that its one fee for all schools at all facilities, eliminating the key replacement fee and the police/fire fees, (Opall arrived at 10:40am) changing Marathon Junction rates to by-the-hour or full-day, clarifying Marathon Park shelter five rates for with and without restroom, charging a fee for before 8am or after 11pm shelter rental use, changing shooting range pass purchase dates from one-year-to-date to the current calendar year, adding an organized youth group ski/snowshoe rate, clarifying hours and rates at the sports fields, removing all other recreation fees related to programs from the fee directive because they fall under the department’s policy document, and housekeeping of some language and fees so that the fee directive reads better. Questions were answered. **Motion** by Peckham, second by Wadinski to approve the fee schedule as presented. **Motion** carried by voice vote, vote reflected as 7-0.

2. To Proceed with Planning and Future Development of Rib Falls Park – The County Comprehensive Outdoor Recreation Plan identified the development of a master plan for Rib Falls Park as a high priority. In 1982 the County purchased 314 acres adjacent to the Rib River and just west of County Highway S from Wisconsin Valley Improvement Company for Highway Department needs and future park development. Since 2004 the site has been mined for sand and gravel. Staff is verifying that the non-metallic mining operations are complete to move forward with park development. Currently Rib Falls Park contains a playground, restrooms and shelter on the original park land. The undeveloped 314 acres is currently not available to the public. The lake area is utilized by the Sheriff’s Office for various trainings including their Dive Team training. A park fund was established with the proceeds from the mining activities for the development of the park. This fund currently has a balance of \$497,420.00. Additionally, \$80,000 is budgeted in the 2021 budget for Rib Falls Park in which the funds can be used for the final design development and construction documents. Staff will be putting together a Request for Proposals (RFP) for design services to develop a final plan, cost estimates and potentially construction documents for the park. It is anticipated that once the firm is hired, staff will conduct a few community input sessions on the park design and staff will reach out to the Town of Rib Falls as well.

Polley explained that there had been an idea at one time to add camping to the park. Commission members were very supportive of developing the park and favored looking into the feasibility of having a campground there. Polley noted that if desired, staff will work with the Sheriff's Department to see what can be done as a partnership to allow them to continue using the park. Questions were answered. Polley said the next step is to go out for RFP to see what the consultant would cost to help put together the final plan and to start having discussion with the towns and communities on what they would like to see at that park. **Motion** by Peckham, second by Herbst that Commission wholeheartedly supports continued work to bring this plan back for consideration and future development of the property. Motion **carried** by voice vote, vote reflected as 7-0.

5. Operational Functions Required by Statute, Ordinance or Resolution: A. Discussion and Possible Action by Committee and B. Discussion and Possible Action by Committee to Forward to the Environmental Resource Committee for its Consideration - None

6. Policy Issues for Discussion and Committee Determination for Consideration by Environmental Resources Committee

A. None.

7. Educational Presentation/Outcome Monitoring Reports for Discussion

A. Park Update –Campgrounds (BEP Park): Staff is currently underway processing over 100 cords of firewood for camping season. Bluegill Bay Park: Vegetation management; staff is using a forestry mulching head attachment on a tracked skid steer to remove undesirable invasive species (i.e. buckthorn, honeysuckle) in designated areas. Also cutting back other species for “rejuvenation” of desirable species. Routine Operations/Programs: snow grooming operations at Nine Mile Forest and Sylvan Hill Recreation Area; snow removal operations; urban forestry program including tree trimming, removals, and stump grinding; building and structure maintenance; equipment maintenance and repair; maintenance of a few restrooms.

B. Westside Master Plan Update – The plan that was developed in 2007 which included Marathon Park and the UWSP-Wausau Campus needs to be updated and include the West Street area where some County facilities are located. There is an idea of possible redevelopment of the West Street area. There has been an initial meeting with City and County staff to get an idea of how to start on the plan. One thing that needs to be taken into consideration is that the County is doing a facility study on all the County facilities and what the needs are. There is an idea that the County facilities on River Drive go elsewhere for further development of this area of the City. The study on County facilities will be done first with some determinations made on the Highway Department, Emergency Management and Park Operations. Once completed the County can move forward with the study of the Westside area and determine the best uses are for the area. The RFP is not going forward at this time, but will still be part of the discussion. Getting the plans and ideas started in the first part of the year is still a plan.

8. Announcements

A. Next Meeting Date & Time, Location – Tuesday, March 2, 2021 at 10:30 am, Rm 5 or via Webex, 212 River Dr., Wausau WI 54403

B. Future Agenda Items – sponsorship plan, naming rights policy, video of how the department processes firewood

9. Adjourn – Motion by Wadinski, second by Peckham to adjourn at 11:30am. Motion **carried** by voice vote, vote reflected as 7-0.



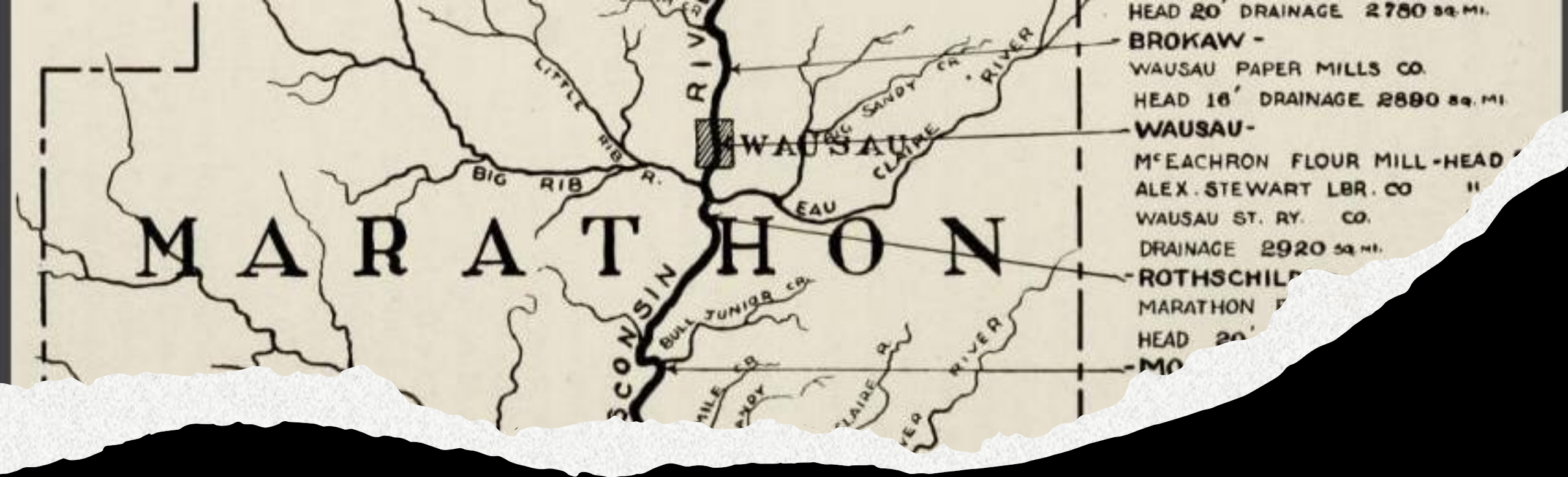
Wausau & Marathon County
Parks Foundation



The Voyageur Heritage Waterway

Wisconsin, Big Rib, Big Eau Pleine & Eau Claire River Trails





Voyageur Heritage Waterway

At the heart of a continent four historical rivers create a confluence where time and history merge

Why Do!

- Uniquely ties the Wisconsin river to its history as a historical waterway for native Americans, French Voyageurs and Missionaries, and lumbermen. Increase awareness of our historical rivers and how they played in the development of the county
- Compliments Wausau Chamber's Master Plan for outdoor recreation
- Compliments Wausau's Whitewater Park and builds an awareness of Central Wisconsin as a center for outdoor recreation
- Compliments Weston's Lower Eau Claire Water Trail
- May increase the potential for water-based businesses to locate in Central Wisconsin to support the needs of kayakers, canoers and paddleboarders
- Marathon & Lincoln counties become a premier destination for kayakers, canoeing and paddleboarder enthusiasts
- Positive economic impact to the Central Wisconsin area. Increase use of our county parks and creates a sense of place and promotes good health through outdoor recreation
- Majority of work already done, we would have to provide signage and marketing materials
- Counties and municipalities would provide construction teams paid for by donors and grants to improve or create infrastructure
- Move handicap kayak launch to another spot for balance use (Oak Island) that would open Lake Wausau up to the physically disabled
- Expand trail system to create the longest trail system in the Midwest (future). Compliments Lower Wisconsin Trail at Portage and the Fox River Heritage Trail making them one of the longest waterways in USA
- Believe major grants and donors could be found to support

Data Points

- 4th busiest intersection in the state 29/39 exchange with over 4 million vehicles a year passing through Wausau and Marathon County
- Central Wisconsin is easy to get to and just a 4-hour drive from Chicago and 3-hour drive from Milwaukee and Twin Cities
- The best whitewater Class I-IV rafting in the Midwest is 60 minutes east of Wausau on the Wolf river
- Only urban whitewater course in the Midwest is in downtown Wausau – We could build upon this with our marketing
- We have the infrastructure to become an outdoor recreation destination for biking, hiking and paddling
- Trail based on *Wisconsin Valley Improvement Company's Wisconsin River Centennial Trail* that was designed in 2007
- Will need to form a friend of the river group to support project and upkeep
- Need an organization to drive marketing and trail usage. Will need to measure usage.

STRATEGIC ACTION PLAN

INITIATIVE 1.1 THE WAUSAU BRAND

Re-brand the Wausau region as an outdoor recreation mecca

STRATEGIES AND ACTIONS

1.1.1. Launch an Outdoor Recreation Task Force that brings together innovators in the region's outdoor recreation industry to discuss opportunities for new events, destinations, and other business opportunities that leverage the region's large menu of outdoor amenities.

1.1.2. Support Granite Peak Ski Area in its expansion projects. Encourage the growth of the resort and expansion of its facilities. Partner with the Ski Area to explore development of surrounding properties with supportive uses (lodging, housing, retail/restaurants) that draw a higher volume of visitors into the region and encourage them to stay longer. Explore opportunities to develop a full-service resort hotel in conjunction with Granite Peak.

1.1.3. Invest in the enhancement and development of extreme sports, outdoor recreation, and related attractions throughout Marathon County. This includes curling, whitewater rafting, hiking and biking trails, and other amenities that attract outdoor sports enthusiasts.

1.1.4. Build awareness of the Wausau region as a destination for the business side of extreme sports and outdoor recreation.

1.1.5. Take ownership of the Wausau region's online and social media presence and play an influential role in traditional media channels. Actively manage and update the City of Wausau and Marathon County websites and other online content, such as Wikipedia, to ensure they include accurate and positive information. These sites are often the first (and sometimes only) source of information people use to learn about a community before a potential visit





INITIATIVE 1.2 TARGETED TALENT RECRUITMENT

Launch a new talent attraction initiative to support employers in their talent recruitment efforts.

STRATEGIES AND ACTIONS

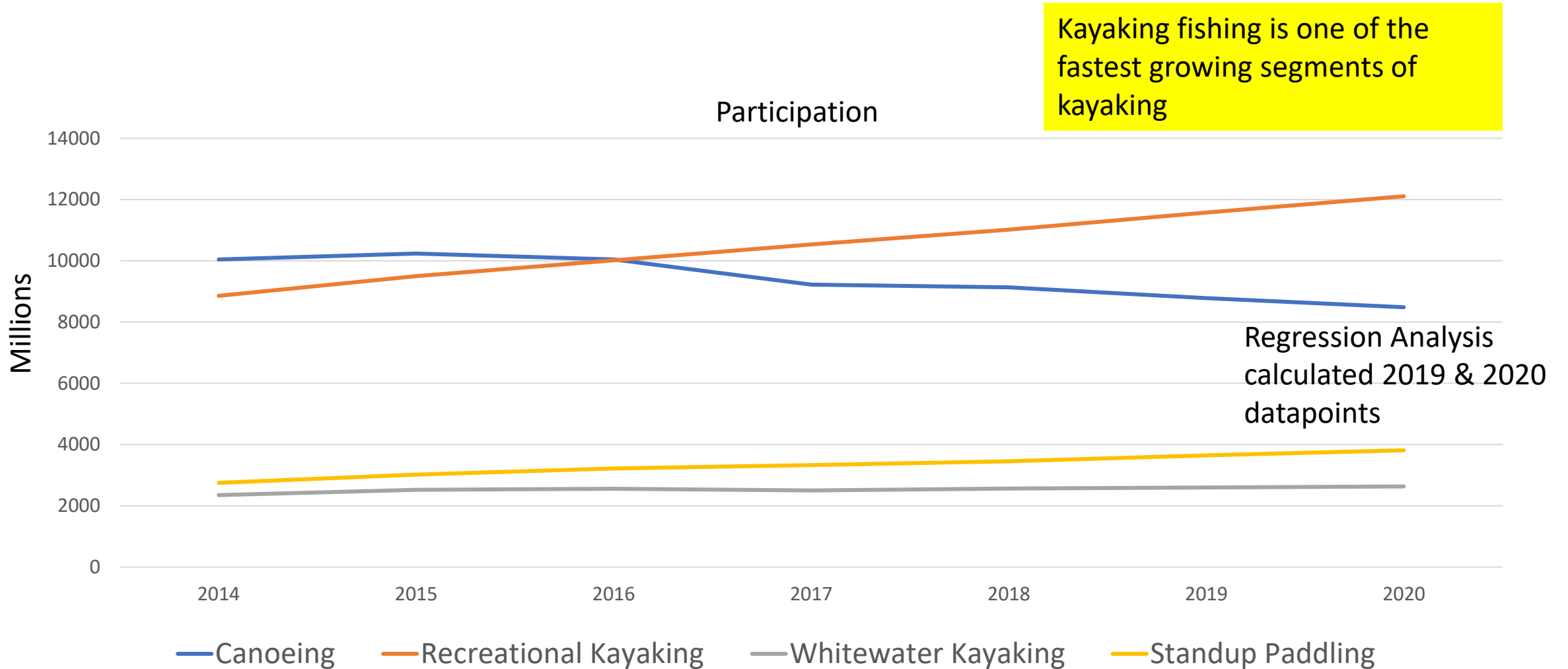
1.2.1. Develop a comprehensive new talent attraction website to market the Wausau region as a desirable destination not only for traditional manufacturing employment, but also for creative workers, entrepreneurs, and professionals. Use the new website as the central information hub for a broader talent attraction campaign. Develop an omni-channel talent recruitment campaign aimed at filling the hiring needs of Marathon County's major employers. Design the campaign with a comprehensive suite of services including media planning, public relations, social media strategy, content creation, creative development, digital management and production, branding, and a job-posting microsite.

1.2.2. Embrace the local Hmong population and explore linkages to St. Paul, MN (an important population center for the Hmong nationally). Work with the Hmong Wisconsin Chamber of Commerce to promote the Wausau region as a leading destination for Hmong business owners and professionals. Market Wisconsin and Marathon County as a Hmong-friendly location to Hmong talent located in other parts of the US and globally.

1.2.3. Promote the Wausau region as a hub for extreme sports and outdoor recreation enthusiasts. The year-round recreational options of the region represent a unique value proposition. The Outdoor Recreation roundtable held in December 2018 revealed specific opportunities that advance this goal. The roundtable identified three specific opportunities that warrant further examination:

- Events (IRONBULL and Xtreme sports generally), mountain bike racing and cross-country riding, downhill ski competitions, whitewater kayaking, cross-country skiing expansion
- Conferences associated with the events that advance outdoor recreation
- Recruitment of niche industries associated with sports and recreation technology

Kayaking & Canoeing Trends



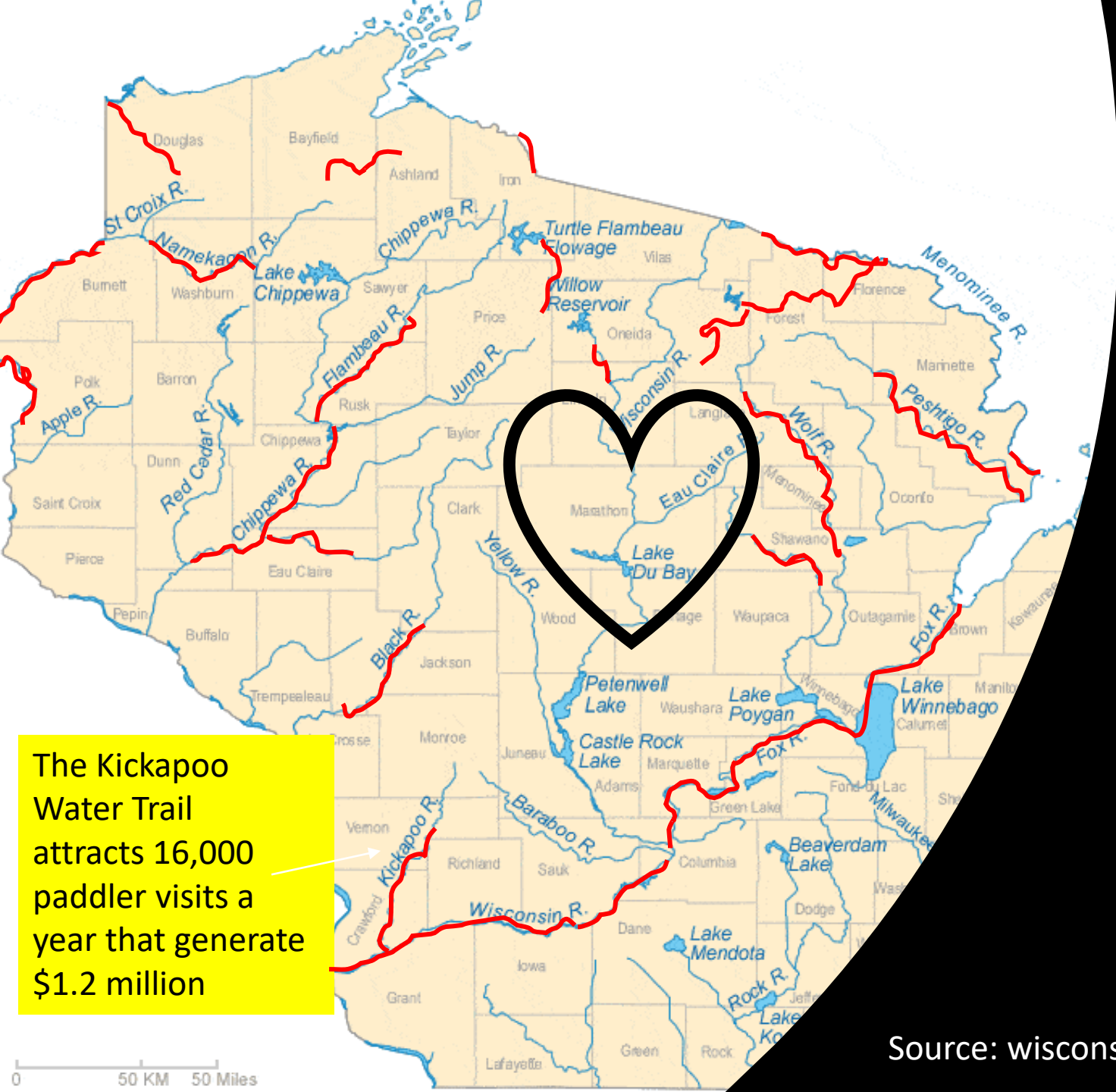
Executive Summary

- In terms of specific paddlesports, recreational kayaking continues to grow in popularity and seems to be replacing many Americans' desires to canoe. Stand up paddling, on the other hand, doesn't have nearly as high a participation rate as either canoeing or recreational kayaking, but its popularity has soared in recent years, gaining 1.5 million participants since 2013.
- Paddlers usually live where waterways are plentiful.
- Paddling participants tend to be Caucasians who have attended or graduated from college. They are best represented by an average annual household income of at least \$75,000, a demographic characteristic that has steadily climbed since 2014.
- At 53 percent, males make up a slightly larger percentage of paddlers than females. Male participation, however, is declining at about one percent per year, and female participation is increasing by the same amount.
- Even though paddlers self-identify as casual participants, they overwhelmingly report that paddling itself is the impetus for their outings. They set out for the water with paddling in mind, instead of tacking the activity onto a broader outing.



Executive Summary

- A large percentage of Americans are trying various paddlesports for the first time. The high rate of new participation is positive news for the overall growth of paddling, as long as the attrition rate stays low. The COVID-19 pandemic has increased the number of participants during 2020.
- The average participant spends more time preparing for a paddling trip than actually paddling. Participants spend 6.1 hours on prep, including over two hours planning, 1.6 hours packing, and 2.3 hours traveling to the paddling destination. Compare this to the length of an average trip, which includes just over four hours of paddling.
- 72 percent of paddlers own at least one type of paddle craft, which is in close alignment with the majority of paddlers who report taking close-to-home paddling trips.



Existing Paddle Trails

The Kickapoo Water Trail attracts 16,000 paddler visits a year that generate \$1.2 million



Proposed Paddle Trails

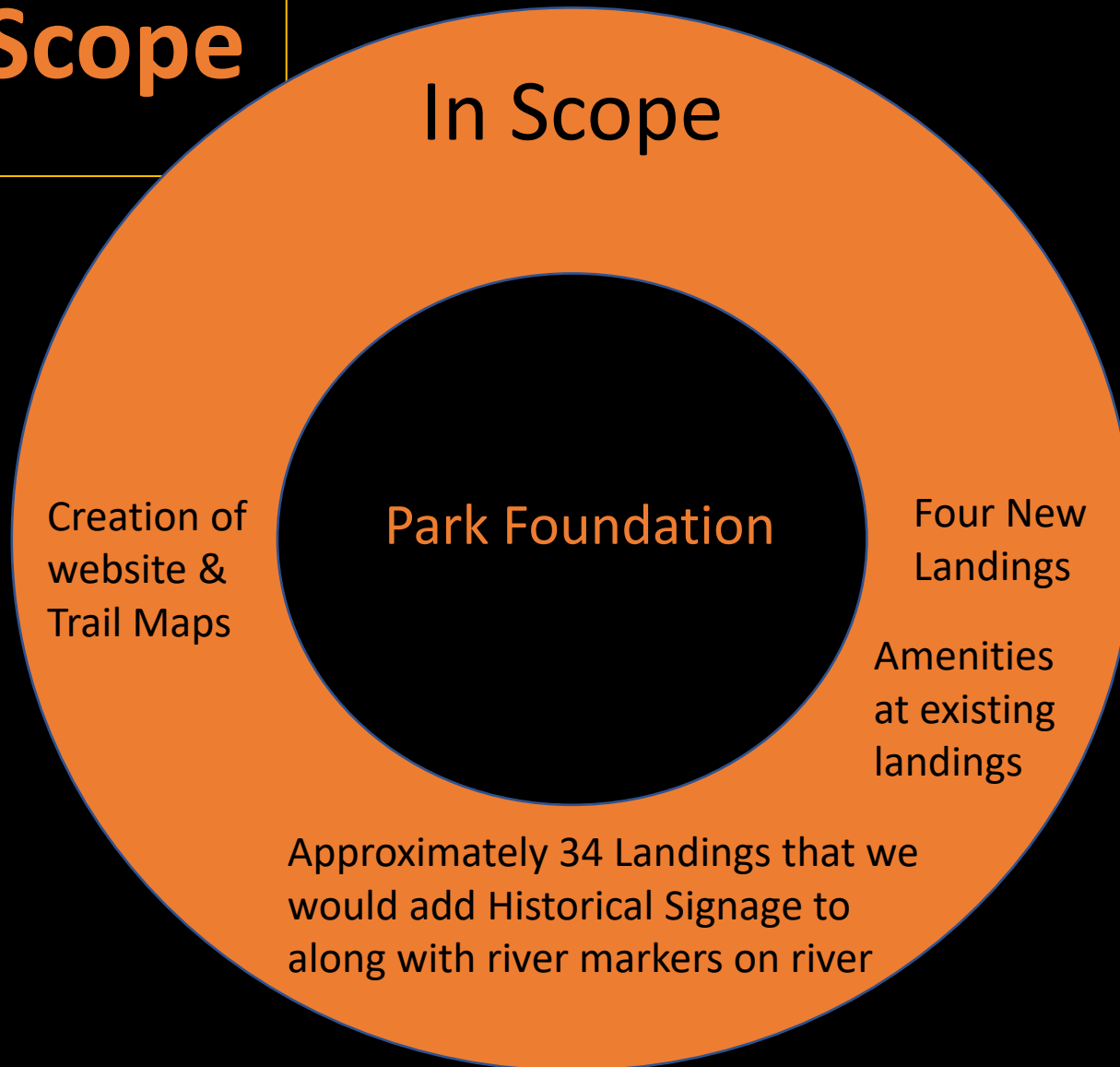
Process Going Forward

1. Meet with Marathon County Park Commission to discuss projects for approval and endorsement – March 2nd
2. Meet with Lincoln County Park Commission to discuss project for approval and endorsement – March 3rd
3. Firm up budget – March 31st
4. Letters of endorsement from Friend's Groups, Municipalities, Associations, etc. – March 31st
5. Public announcement of project – City Pages – April 12th
 - a. Invite Park Foundation Team, Jamie, Park Commission, WVIC
6. Have history of river completed – May 3rd
7. Contact individuals, foundations & write grants for 100% funding of Voyageur Heritage Waterway – April – June
8. IRONBULL Charity Float on Wisconsin in June – Use to open new landing in Brokaw - portion of money going to this project - June
9. Goal would be to have 80% raised by July
10. Install signage and complete the remaining landings – August – November

Project Scope

Founding

- Would seek & help with funding from local foundations, state, federal, recreation organizations, associations & donors for both in-scope and out-of-scope projects



Out of Scope

- Moving the existing Drott street landing
- Building new landing at foot of Eau Claire River Bridge
- Building new landing at Rookery Park
- Building new landing at Lion's River Park in Marathon City
- Building road to butt up to Yellow Bank Park landing
- Building the infrastructure for the Military Road landing
- Signage or river markings in Lincoln County

The Voyageur Heritage Waterway
See travel times, traffic and nearby places

Think about branding the lake formed by the WPS dam as **Lac Grand Bulle Chute** in honor of French Heritage

Move Handicap Launch to Lake Wausau, site TBD by Parks

Big Rib River Trail

Landing Number 147: Wisconsin River Forest
Location: Pine Bluff Road

Landing Number 153: Brokaw Mill
Location: Off County Road WW Bridge

Landing Number 155: Scholfield Park
Location: East Randolph Street

Landing Number 155: Gilbert Park
Location: Off North 6th Street

Landing Number 159: RiverLife Park
Location: North River Drive

Wausau Dam Portage 160: Clarke Island
Location: River Drive

Landing Number 160: Oak Island
Location: River Drive



Search Google Maps
See travel times, traffic and nearby places

The Voyageur Heritage Waterway

Landing Number 162: Gulliver's Landing
Location: Mallard Lane

Landing Number 162: D.C. Everest Park
Location: South 3rd Ave

Landing Number 162: Memorial Park
Location: Memorial Park Drive

Big Rib River Trail

Landing Number 163: Bluegill Bay Park
Location: Parrot Lane

Eau Claire River Trail

Landing Number 165: Kort Street Park
Location: West Kort Street

Landing Number 166: Domtar Portage
Location: Azalea Drive



Search Google Maps
See travel times, traffic and nearby places

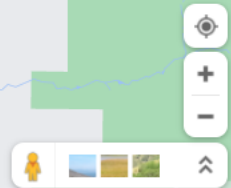
The Voyageur Heritage Waterway

Landing Number 166: Domtar Portage
Location: Azalea Drive

Landing Number 166: Military Road
Location: W Military Road

Landing Number 176: Mosinee River Park
Location: Main Street

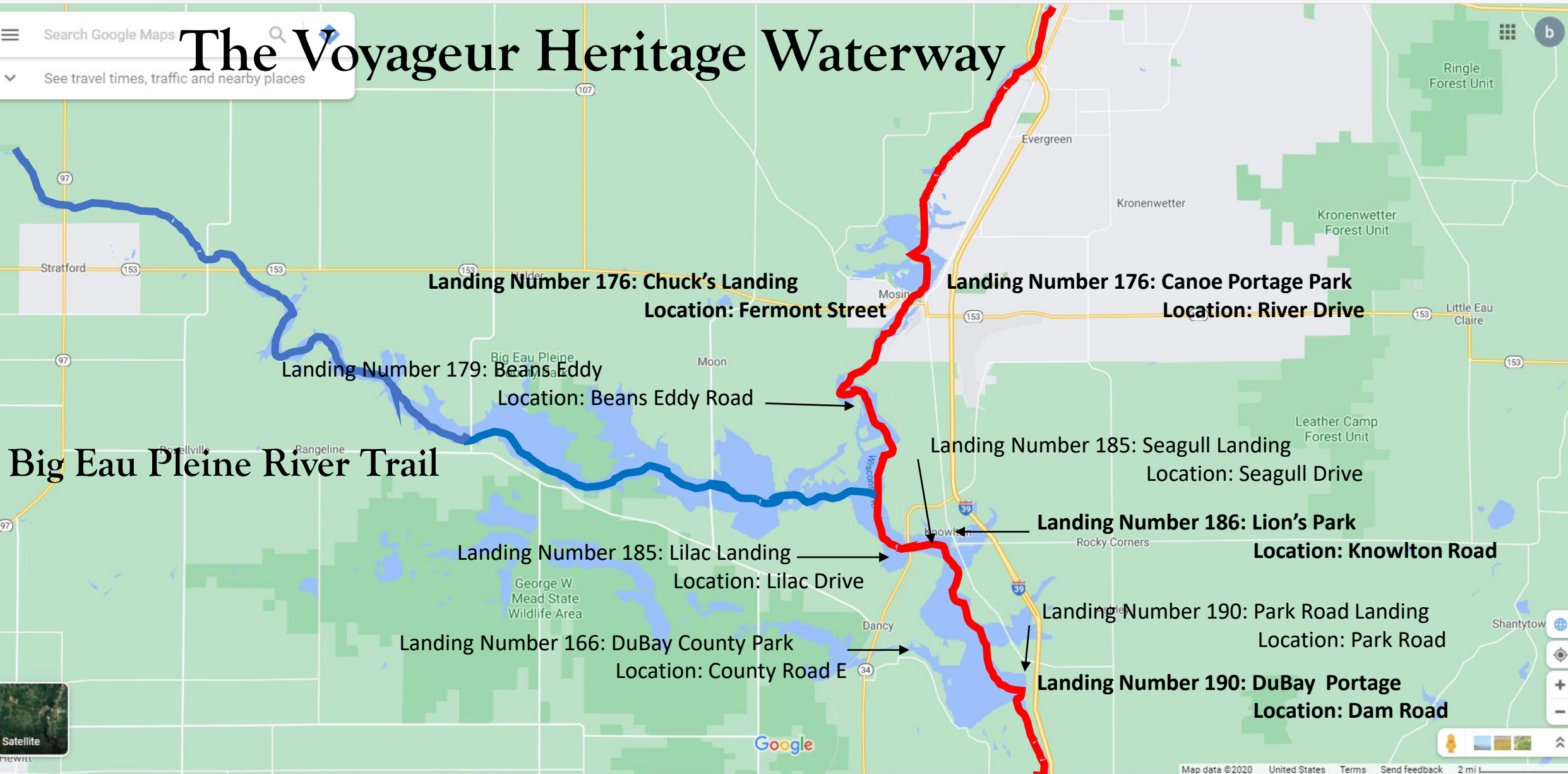
Landing Number 176: Canoe Portage Park
Location: River Drive



Search Google Maps
See travel times, traffic and nearby places

The Voyageur Heritage Waterway

Big Eau Pleine River Trail



Search Google Maps

See travel times, traffic and nearby places

Big Rib River Trail

Landing Number ##: Sunnyvale Landing
Location: Parker Drive

Landing Number ##: Trails End Lodge Landing
Location: Sherman Avenue

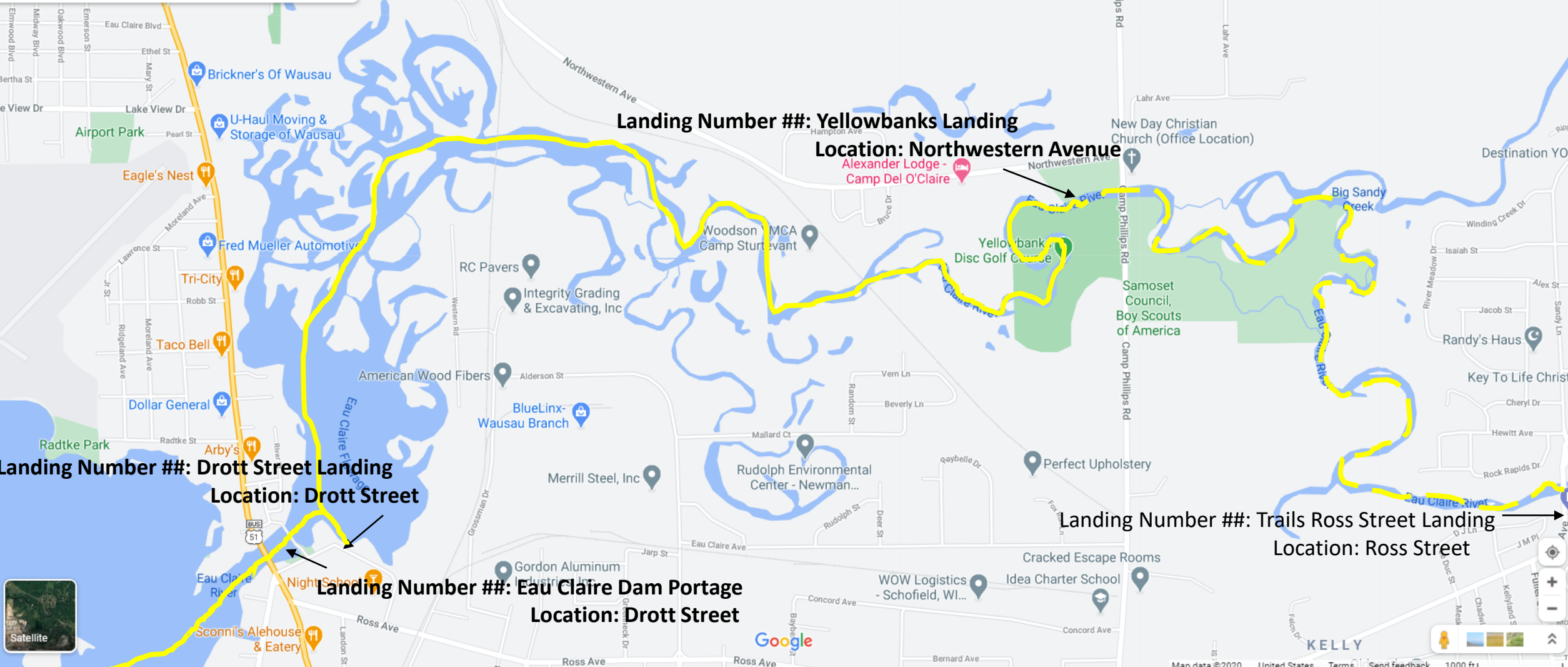
Landing Number ##: Duncanson Landing
Location: Hummingbird Drive

Landing Number ##: Gulliver's Landing
Location: Mallard Drive



The Lower Eau Claire River Trial

Search Google Maps
See travel times, traffic and nearby places



Landing Number ##: Yellowbanks Landing

Location: Northwestern Avenue

Landing Number ##: Drott Street Landing

Location: Drott Street

Landing Number ##: Eau Claire Dam Portage

Location: Drott Street

Landing Number ##: Trails Ross Street Landing

Location: Ross Street

Search Google Maps

See travel times, traffic and nearby places

Big Eau Pleine River Trail

Voyageur Heritage Waterway

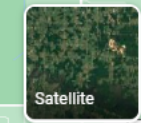
Landing Number ##: Big Rapids County Park
 Location: Big Rapids Road

Landing Number ##: Big Eau Pleine Landing
 Location: Big Eau Pleine Road

Landing Number ##: Spillway Portage
 Location: Dam Road

Landing Number ##: Lisa's Landing
 Location: Off County road S

Landing Number ##: George's Landing
 Location: Off County road C



Who we have touched base with so far...

- Wausau and Marathon County Parks
 - Greater Wausau Chamber of Commerce
 - Town of Rib Mountain, Parks Commission
 - City of Schofield, Zoning Administrator/Public Works
 - Village of Rothschild, Village Administrator
 - Village of Marathon City, Village Administrator
 - Village of Maine, Village Administrator
 - City of Mosinee, Village Administrator
 - Kayak Corporation
 - IRONBULL
 - Wisconsin Valley Improvement Company
 - Historical Society of Marathon County
 - D & L Signs Inc
 - Village of Kronenwetter, Village President
 - Sun Printing
 - Divepoint Scuba & Paddling
 - Peter Biermeier – Retired DNR Program Director
- Lincoln County Parks Department
 - Merrill Parks Department
 - Portage County Parks & Recreation, Director of Parks
 - Tomahawk Parks and Recreation
 - Town of Knowlton
 - Lake Wausau Association
 - Lion's Club of Knowlton
 - Wisconsin Department of Tourism
 - River Alliance of Wisconsin
 - DuBay Property Owners Association
 - North Central Wisconsin Regional Planning Commission
 - Big Eau Pleine Citizens Organization
 - U.S. Geological Survey
 - Holly Voll – Grant Writer
 - Shepard & Schaller
 - Lincoln County Parks Commission – March 3rd



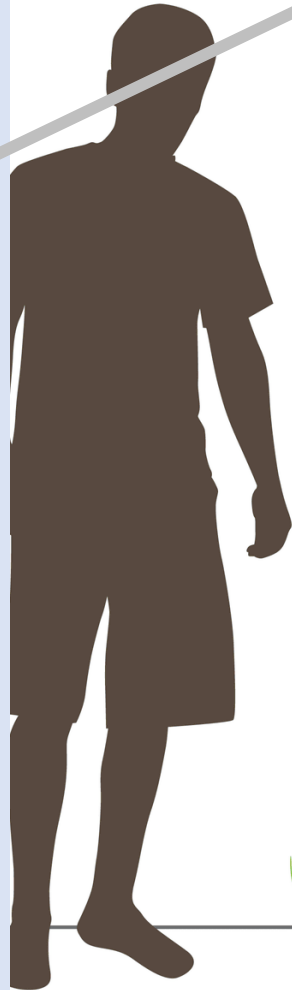
The Trail & Signage

Janke Bookstore Landing - Mile 160



Established in 1874 and purchased by Carl Janke after his U.S. Army discharge from World War I in 1919, Janke Book Store is recognized as an institution in Wausau. Janke Book Store has held true to the adage of founder Janke that an independent bookstore's success is founded on providing far more than books to its customers. From the days of horse and buggy to today's fast paced, computerized generation, Janke Book Store offers the widest selection of products

GPS xxxxxxxxxxxx



gn Types May Not Be to Scale

Eau Claire River Water Trail - Yellowbanks Park

General Description

The Eau Claire River, just east of Wausau, Wisconsin, is a scenic and historic waterway. It is a popular destination for recreational activities such as fishing, canoeing, and kayaking. The trail follows the river through a beautiful landscape with many scenic views.

For Your Safety

Always wear your seat belt and please don't drink and drive. If you are going to drink, please do so responsibly. Please don't drink and drive. If you are going to drink, please do so responsibly. Please don't drink and drive.

Interpretive or Park/River Regulations

Officer [Name], Wisconsin Department of Natural Resources, is the contact person for all questions regarding the Eau Claire River Water Trail. Please contact the officer at [Phone Number] or [Email Address].

Informational Sign

Ross Avenue - Take Out on the Left

Bridge Signs

Next Access, Yellowbanks Park

River Signs

On-Street

Eau Claire River Water Access

Suggestions & Big Take-A-Ways

- WMCPF will fund and create the story telling and signage for 34 landings on the Wisconsin, Big Rib River, Eau Claire
- Signage at each landing sponsored by Foundations, Grants, Individual Donation that tell a story of Native Americans, French Fur and Missionary History, Logging & Lumber History, Historical Businesses, Historical or Fictional Individuals, Legends and Lore of the river(s)
- Add amenities to the landings per the Parks Department as determined by them and funded by the WMCPF
- Need permission to place signage at existing landing, develop four new landings, add river signage and name landings
- Rebrand the Eau Claire Flowage to the Eau Claire Wetlands
- New Landings – Big Rib River - Sunny Vale Park (Wausau), Big Rib River - Duncanson Landing (Wausau), Wisconsin River – End of Military Road (Rothschild), Eau Claire River - Yellow Banks Park (Weston)
- Move the handicap launch north of Riverlife Park to Oak Island, Memorial, or Blue Gill Bay to access Lake Wausau. Riverlife has a handicap launch for the upper river.
- Name the flowage north of the WPS dam as **Lac Grand Bulle Chute** in honor of our French Heritage and gives marketing definition to the flowage. Name the flowage above the Schofield dam as the Eau Claire Wetlands Park

PARK NAMING POLICY-

1. A. The Purpose of the naming policy is to develop place names that are:

- **Unique.** Unique names are identifiable to a specific place and do not duplicate or are not confused with existing names in the City of Wausau or neighboring areas.
- **Meaningful.** Names may reference natural features or landmarks, local historic events or persons with historic significance, locally or nationally.
- **Inclusive.** Names shall be selected in a public adoption process. They shall be respectful of all people and cultures and reflect positive values acceptable to the community as a whole.

B. Donor Naming may be considered on a case by case basis. Donor naming agreements may include provisions for ongoing and special maintenance costs, such as the renovation of a facility. Donor naming may also have specific terms for discontinuation or termination and shall be adopted by City Council/County Board resolution.

C. Fundraising campaigns for dedicating memorial amenities, such as benches, pavers or trees, shall be approved as a campaign by the Park and Recreation Committee/Park Commission and City Council/County Board under the existing Donation Policy concurrent with park improvements or new park developments. Wording on memorial features shall follow the naming guidelines in this policy.

2. Application Process:

A. The process may be **initiated** in the following ways:

- i. By public announcement by the Park and Recreation Committee in local papers or the city's website or in conjunction with neighborhood design process.
- ii. By application by a landowner, donor, group, or resident.

B. A **Naming Request Form** shall be completed which will include:

- i. Location of Park or feature to be developed / addition, and street frontage(s).
- ii. Person/organization requesting the name and their contact information.
- iii. Proposed name and up to two alternates, if desired.
- iv. Explanation of name meaning(s), including translation, or biographical information if the name is honoring a person or people.
- v. Description of process involved in choosing the proposed name and what type of public involvement was used.

3. Review Procedure.

A. Applications shall be submitted to the Parks, Recreation & Forestry Department, and reviewed by staff for completeness and accuracy. A naming request made as a part of the development process, may be submitted by the developer with a plat application. If not, the Parks and Recreation Committee/Park Commission will begin the process by a public announcement as in 2.) A. i, above.

B. The Parks and Recreation Committee/Park Commission shall determine whether the park name request meets the intent and guidelines of the policy, the Parks and Recreation Committee/Park Commission, will then offer a recommendation to City Council/County Board/County Board. City Council/County Board has the final authority on park names.

If it is decided that the park name does not appear to meet the intent and guidelines of the policy, the applicant and City Council/County Board will receive a memo that a name application in honor of a person was not recommended and for what reason. Appeals of the

decision can be brought to the Parks and Recreation Committee/Park Commission. If the Committee/Commission chooses to discuss the application, it may do so.

C. Name Requests which are complete are presented by staff to the Parks and Recreation Committee/Park Commission in a regular scheduled meeting.

D. The Parks and Recreation Committee/Park Commission shall discuss the Naming Request and recommend or not recommend it to the City Council/County Board. They may also table the request for due consideration before voting on it.

E. The City Council/County Board will hear and vote on the Parks and Recreation Committee/Park Commission recommendation. The City Council/County Board shall have final authority on all Park Naming Requests.

All park names shall be adopted by Resolution by the City Council/County Board. A Park Naming Resolution shall only take effect after the land has officially been transferred to the city's ownership and the city retains legal title to the land.

4. Guidelines:

A. General Name guidelines:

- Should not duplicate or be easily confused with existing public or private places in or near Wausau.
- Should avoid adjectives such as east, west, big, long, etc., and numbers when possible unless an adjacent feature name uses the same descriptor.
- Should use the fewest words possible.
- Shall include an appropriate designator of the type of park, i.e. Community Park, Neighborhood Park or Tot Lot.
-

B. Names of **historic places, events and cultural ideas** shall be appropriate to the site and proposed use.

C. Names for site features, wildlife or other natural ideas, when site specific

D. Guidelines for naming in honor of persons are as follows. A person honored with a park or facility name must meet all of the following:

- Have resided or worked in Wausau or the area which has become Wausau, and,
- Be separated from city service for at least one year prior to application or be deceased for at least one year prior to application. and,
- Had an exceptionally long tenure with the City/County; a minimum of ten (10) years.
- Be highly esteemed in the community (without criminal or legal judgments which show poor character- a background check may be performed with consent, character references will be contacted).

In addition, the honoree(s) are recommended to meet at least one of the following conditions:

- a. At least 10 years of civic service (must have made a significant and exceptional contribution to the parks or community as a whole for recreation purposes).
- b. A local historical individual or family who were influential in the development of the city or of other widely acknowledged historic importance.
- c. A major financial contribution (donation of at least 51% of the value of park land dedication).

Note: Meeting the guidelines does not guarantee that a name will be approved.

DRAFT

City of Wausau
Park Naming Application

Part I. All naming requests shall follow the guidelines below:

A. General Name guidelines:

- Should not duplicate or be easily confused with existing public or private places in or near Wausau.
- Should avoid adjectives such as east, west, big, long, etc., and numbers when possible unless an adjacent feature name uses the same descriptor.
- Should use the fewest words possible.
- Shall include an appropriate designator of the type of park, i.e. Community Park, Neighborhood Park or Tot Lot.

B. Names of historic places, events and cultural ideas and names using **Dakota language** or concepts shall be appropriate to the site and proposed use, and should follow standard current spelling of the Dakota language.

C. Names for site features, wildlife or other natural ideas, when site specific

D. Guidelines for naming in honor of persons are as follows. A person honored with a park or facility name must meet all of the following:

- Have resided or worked in Wausau or the area which has become Wausau, and,
- Be separated from city service for at least one year prior to application or be deceased for at least one year prior to application. (If the person is not deceased at the time of the naming, the name shall be conditional until the person has been deceased for at least one year, the City Council/County Board will formally adopt or not adopt the name after this time), and,
- Be highly esteemed in the community (without criminal or legal judgments which show poor character- a background check may be performed with consent, character references will be contacted).

In addition, the honoree(s) are recommended to meet at least one of the following conditions:

- d. At least 10 years of civic service (must have made a significant and exceptional contribution to the parks or community as a whole for recreation purposes).
- e. A local historical individual or family who were influential in the development of the city or of other widely acknowledged historic importance.
- f. A major financial contribution (donation of at least 50% of the value of park land dedication).

Note: Meeting the guidelines does not guarantee that a name will be approved.

Part II. Please fill in all of the questions below

Return completed applications to Wausau/Marathon County Parks, Recreation & Forestry Department or mail to: Wausau/Marathon County Parks, Recreation & Forestry Department, Attn: Director, 212 River Dr Suite 2., Wausau, WI 54403.

1. **Name and** Location of Park or feature/**amenity** to be named or Development / Addition name, and adjacent street frontage(s).

2. Person/organization requesting the name _____

Phone (daytime) _____ Fax _____

e-mail address (please print clearly):

Relationship to the park name honoree, if the name is in honor of a person or persons

3. Proposed name (and up to two alternates, if desired).

4. Explanation of name meaning(s), including translation, or biographical information *and character references* if the name is honoring a person or people, if applicable (attach additional sheets).

5. Please describe the process involved in choosing the proposed name and what type of public involvement was used.

Note: 1. Applications determined to be incomplete by staff will not be considered for formal review.

2. Meeting the naming guidelines does not guarantee that a proposed park name will be approved.

POLICY FOR THE NAMING, DEDICATION, AND SPONSORSHIP OF MARATHON COUNTY FACILITIES, ROOMS, AND OPEN SPACES

PURPOSE

This Policy establishes a process and criteria for the consideration of requests by interested parties for the naming or renaming of County facilities, except relating to parks, forestry and recreation facilities. It is also the purpose of this policy to establish a procedure for acceptance of donations and sponsorships that carry with them a request for dedication or recognition. This Policy does not imply that all facilities, rooms, and open spaces will be named for an individual, group, or organization, the Policy simply puts a process in place by which naming may occur.

APPLICATION

County facilities, rooms, or open spaces. This ordinance applies to all County facilities, rooms, or open spaces, except as provided below.

Parks, Forestry and Recreation Facilities Exempted. Parks, forestry and recreation facilities are those facilities that fall under the purview of the Marathon County Forestry/Recreation Committee and the Park Commission, as described under Chapters 16 and 19 of the Marathon County General Code of Ordinances and Chapter 27, Wis. Stats. All decisions with respect to the naming or renaming and/or the acceptance of donations and sponsorships with respect to new or existing parks, forestry and recreational facilities will be at the sole discretion of the Marathon County Forestry/Recreation Committee and the Park Commission.

POLICY STATEMENT

In general, County facilities, rooms or open spaces may be named in honor of a deserving or outstanding individual, group, or organization. In selecting such individuals, groups, or organizations, the criteria specified in Section II of this Policy shall be followed.

Names of individuals, civic, fraternal, veterans, or other groups who have donated land, money property, or equipment to the County may be considered for area dedication under the provisions of Section III of this Policy, entitled "Donations and Sponsorships."

Plaques or other appropriate types of markers may be used when a facility, room, or open space is named or renamed. Memorials depicting an individual's, groups, or organization's accomplishments may be marked with plaques.

I. Process for the Naming/Renaming of County Facilities, Rooms or Open Spaces, Other than Park and Recreation Facilities

The process for naming or renaming a County facility, room or open space will be as follows:

- A. **Initial Application.** A request to name or rename a County facility, room or open space may be initiated by one (1) or more County resident(s), business owner(s), property owner(s), or County staff using the Commemorative Dedication, Naming, and Donor Application ("Application"), which will be submitted to the Marathon County Clerk's Office. The Application should include a full description of any donation or sponsorship offered. The Application should also include letters of support, articles, and other evidence demonstrating broad-based community support of the Application, if any exist.
- B. **Contents of Application.** The Application shall identify the County facility, room, or open space, state the reason(s) for the proposed name or name change, and specify the proposed name(s) if any. If the proposed name is that of a group, organization, association, company, or business, the background information shall include information regarding applicant's purpose, mission, and community involvement supporting the sponsorship request. If the proposed name is that of an individual, the background information shall include information demonstrating the individual's good character, personal achievements, contributions to the community, and/or efforts towards enrichment of the County or its residents.
- C. **Review of Application by Director.** The County Clerk shall forward the Application to the County Administrator. The County Administrator shall designate the Director of the appropriate department to review the Application. The Director shall review the Application and determine if it is consistent with this Policy and any other County policies, rules, or regulations. The department Director may propose alternate names. Once approved by the Director, any names must also be approved by the County Administrator.
- D. **Incomplete or Inconsistent Application.** Applications that are determined by the appropriate County department Director to be incomplete, without sufficient support, or that are otherwise inconsistent with this Policy and any other County policies, rules, or regulations will be returned to the applicant together with a written explanation for the return. The applicant may resubmit the Application at any time with new or additional information to correct the insufficiencies identified by the Director.
- E. **Value of Donation or Sponsorship.** If the Application includes an offered donation or sponsorship, see Section III, below for acceptance criteria and authority.
- F. **Review by Committee.** If the Department director determines that the application is consistent with this Policy and any other County policies, rules, or regulations, the Department director shall forward the Application to the Human Resources/Finance and Property committee for its

review and consideration. All decisions with respect to the naming or renaming of County facilities, rooms, or open space will be at the sole discretion of the Human Resources/Finance and Property committee. The Committee may elect to move the Application to the County Board for final consideration

- G. The County Clerk will maintain a record of all names and/or recognition granted.

II. Naming Criteria

Priorities to be considered in naming County facilities, rooms or open spaces shall be as follows:

- A. Recognizable area. Names that aid in locating a facility, room, or open space (i.e. "Stratford Highway Shop")
- B. Geographical Features. Geographical features, such as rivers, creeks and terrain.
- C. Names To Be Avoided:
1. Cumbersome, corrupted, or modified names, profane, discriminatory or derogatory names relating to age, race religion, creed, national origin, sex, color, marital status, disability, sexual orientation, political affiliation or other similar categories.
 2. Names that cause confusion due to duplication or that sound too similar to existing named locations within the County or the surrounding region. Only one facility, room or open space may be named in honor of an individual.
 3. Names of companies whose business is substantially derived from the sale of alcohol, tobacco, firearms, adult entertainment and/or other practices considered unsuitable or inappropriate for children.
 4. Names of appointed or elected local officials currently in office or current County employees.
 5. The re-use of former facility names other than for a reconstruction of the same facility in the same location.
 6. Names that would result in the overt commercialization of County facilities.
- D. Individuals, Groups, or Organizations. The following criteria will be used in evaluating the use of names of persons (whether living or deceased), groups, and organizations.
1. General Criteria. Names of persons, groups, or organizations having a longstanding affiliation with the County of not less than ten (10) years of significant community service, involvement, or contributions beyond the ordinary interest level whose efforts have:

- Enhanced the quality of life and well-being of County residents;

- Contributed to the preservation of the County's history or culture;
- Made exemplary or meritorious contributions to the County or its residents; or
- Contributed to the acquisition, development, or conveyance of land, buildings, or other amenities to the County. See Subsection IV. D., below.

2. Deceased Persons. Such individuals may include national and/or local heroes:
 - A resident of Marathon County, who has attained local, state, or national recognition in an area of work that would relate to the facility, room or open space to be named.
 - Those who have given outstanding service to mankind or who have worked over and above any ordinary interest level.
 - Historic persons.

3. Living Persons. Facilities, rooms, or open spaces may be named after living persons only after a study has been completed relative to the individual's background and qualifications pursuant to the criteria set forth above.

4. County Official or County Employee. Naming after an individual who has served as a County Official or a County employee may only occur after the person has separated from County service and should be based on the following criteria:
 - Made significant contributions over and above the duties required by the position.
 - Had a positive impact on the past and future development of programs, projects, or facilities in the County.
 - Made significant volunteer contributions to the community outside of the scope of their job.
 - Had exceptionally long tenure with the County; a minimum of ten (10) years.
 - Significant public support for a memorial to the County official or employee on the occasion of their death or retirement.

5. Groups or Organizations. County facilities may be named or recognized in honor of an individual, group, organization, association, company, or business that has been instrumental in acquiring sites either by donation of land or money or has donated the amount of land or money needed to complete development of a site.
 - If the donation or contribution exceeds 51% of the project budget or appraised value of the project, facility, or development being considered for naming.
 - A lesser donation may be honored by an area dedication/plaque recognizing the individual, group, organization, association, company or business and the donation or contribution they made to the project.

6. **Renaming Facilities Previously Named.** Facilities rooms, or open spaces should only be renamed in exceptional circumstances. It is recommended that efforts to change a name be subject to the most critical examination so as not to diminish the original justification for the name or discredit the value of the prior contributors or his/her family. Facilities named by deed restriction or other legally binding obligation cannot be considered for renaming unless permitted by the deed or other restriction. Renaming a facility, room, or open space, however, is appropriate when:
 - The criteria set forth herein are met;
 - There is a valid reason for renaming the facility, room, or open space; and
 - An appropriate level of community support exists.

III. Donations and Sponsorships

A. Acceptability of Donations. Individuals, groups, organizations, associations, companies, or businesses may choose to offer a donation of land, equipment, materials, or funding to the County, earmarked for special projects.

1. Such projects may include but are not limited to, the development of capital improvements, facilities, amenities, spaces, displays, benches, and trees.
2. The appropriate County department director will review the acceptability of any donation and determine if the benefits to be derived warrant acceptance of the donation. Criteria for evaluation include:
 - the desirability or need for the property or item donated or other benefit to be derived from the donation.
 - an analysis of the make, model, and proposed location of the item or equipment donated.
 - consideration of any immediate or initial expenditure required by the County in order to accept the donation,
 - the potential and extent of the County's obligation to maintain the property or item donated,
3. Donation of an item may also be required to include funding for its installation and maintenance as determined by the appropriate County department. County staff will arrange for the installation and any ongoing maintenance of any donated item.

B. Authority to Accept Donations.

1. The Human Resources/Finance and Property committee shall have the authority to accept donations of materials, equipment, or funding:
 - Up to a value of \$30,000 shall be forwarded to the Committee for consideration.
 - In excess of \$30,000, or involving modifications to existing County facilities that will have a significant visual, functional, or land use impact, will require approval of the

Capital Improvement Committee and will then be forwarded on to the Human Resources/Finance and Property committee for consideration.

2. The appropriate County department director shall accompany the request to the committee(s) to provide information gathered in review of the request.
3. The Human Resources/Finance and Property Committee may elect to move the Application to the County Board for final consideration. In the event the Application is associated with a "public works" project, pursuant to sec. 59-52(29), Stats. or successor statute, and involves the donation of materials or volunteer labor, the Application shall be moved to the County Board for final consideration.

C. Conditions of Acceptance.

1. The County will assume ownership, control, and maintenance of any donated property or item unless conditions of acceptance, as determined by the County, provide otherwise.
2. The County shall not be obligated to repair or replace any donated property or item that is damaged or destroyed for any reason, such as by vandalism or theft, or, in the case of live plants, if they die.
3. Unless the conditions of acceptance, as determined by the County, provide otherwise, the County will decide when changes shall be made to any County facility, with no assurances that a donated item will be retained. The County reserves the right to remove and/or relocate any donated item at any time. However, if a donated item(s) needs to be removed, the County will make reasonable efforts to relocate the item(s) at another facility. The County will make reasonable efforts to notify the donor of any changes as they occur.
4. The offer and acceptance of a donation does not necessarily ensure or confer upon such donor an area dedication/plaque. When acknowledging such donation or dedication, the dedication language shall conform to all other naming criteria set forth herein.
 - Because such markers are prone to vandalism and require maintenance, plaques, markers, and memorials should be used sparingly.
 - The cost of plaques, monuments, and replacement signs resulting from, or done in conjunction with the dedication or commemorative naming/renaming of a facility, room, or open space may be required by the county to be borne by the individual, group, or organization requesting the name.
 - The type, size, font, and placement of plaques, monuments and signs installed or placed at County facilities shall be at the sole discretion of the County. Plaques, benches, trees, and other donated objects are not intended to be an official gathering space.

- D. Reserved Right to Reject Offer.** The County reserves the right to reject any offer of donation or sponsorship if, in the County's sole discretion, acceptance of the donation is determined not to be in the best interest of the County.

E. **Special Events/Promotions.** If a donation for a special event or promotion is provided by a corporate or organizational sponsor, such donor or sponsor may, at the discretion of the appropriate County department director, be recognized through display of the donor or sponsor's logo banner/advertising and/or names on promotional material(s) or at the site(s) of the event. Such donation or sponsorship by a donor or sponsor shall not entitle that donor or sponsor to any special privileges.

Eau Claire Dells Project Open Soon

C. C. Vogl Sr., Aniwa Banker, Erecting Club House, Playground Equipment

Marathon county will have one of the finest privately owned summer playgrounds, equipped with club house, swimming pool, bath house and cottages, in central Wisconsin when Charles C. Vogl Sr., Aniwa banker, completes his development project at the Eau Claire dells on the Eau Claire river about eighteen miles east of Wausau.

Development of the venture began last fall and it is expected that the buildings and equipment will be ready for the public use within a few weeks. Mr. Vogl, who has possession of several acres of land east of the Eau Claire dells bridge and adjacent to the Marathon county park for sometime, will have a project representing an expenditure of \$35,000 when completed.

A dam has been built as a part of the plans for the playgrounds east of the bridge at a cost of \$5,000. It is made of concrete and steel and will be used to hold water for a swimming pool. A water toboggan will dip into the pool for the use of bathers. The toboggan is forty feet high and one hundred feet long. This will be in addition to other playground devices which are being erected.

The club house is a one story frame building and is nearly completed. The dimensions are ninety-six feet by fifty-four feet and is located about thirty rods east of the bridge. The group of buildings will include three cottages which are to be rented during the summer season. Tables, seats and other equipment for picnickers have been installed on the premises.

EAU CLAIRE DELLS TO BE IMPROVED

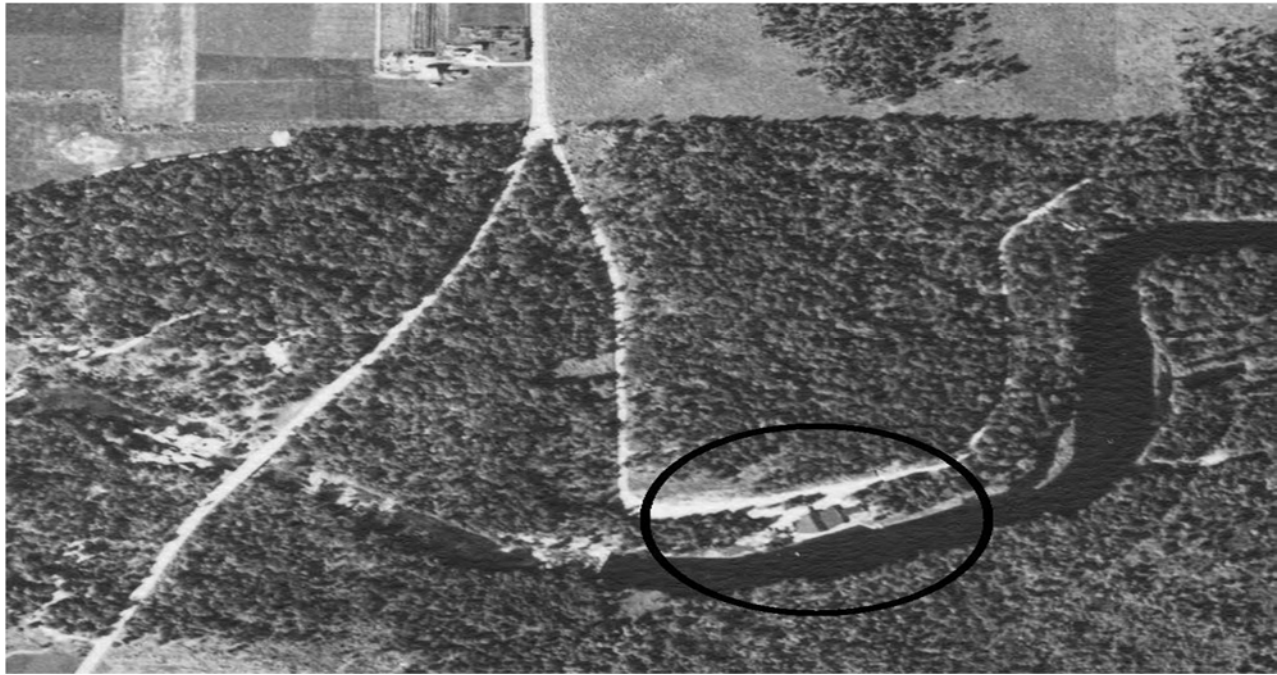
Antigo Parties Plan to Establish Summer Resort Near the Dells

John Mathiesen has been given charge of the improvement work being done at the Eau Claire dells park by the park commissioner, and a staff of workers is clearing out much of the underbrush and wind falls, and making the park at the dells more available. The park has been visited this summer by thousands of tourists, and is becoming known as one of the most beautiful spots in the state. The coming year, it is probable, a resort will be established adjacent to the park, as property has been bought and plans made for thirty cottages and a club house or hotel.

The park now lacks adequate parking space for autos, and space on the east side of the river is being cleared, which will help some. The county owns sixty acres at the natural beauty spot, which can be made more and more available as work is done in extending the clearings without taking out too many of the fine trees.

It is reported that the Central Wisconsin Power & Light company has secured ownership of land further down the Eau Claire river, south of the dells, and plans to erect a dam for the supplying of electric power for use in the district.

Aerial picture from September 1938



From July 1936

merely keeping the playing field in splendid condition.

DELLS OF THE EAU CLAIRE PARK

This park is shaping up into one of the finest in the country. Many inspectors of all kinds under the C. C. C. set-up, have gone over the area and all have expressed both orally and in writing, their enthusiasm over the possibilities that are found here. A fairly large program of work has been laid out and much of it is being carried out at the present time.

Some forty-six acres (NW $\frac{1}{4}$ SW $\frac{1}{4}$ Sec. 7-29-10) were purchased from the Vogl Estate in January, 1935. This land lies west of the original park.

A splendid hardwood grove covers the north half of the forty. This woods is very thickly carpeted with wild flowers of all kinds. The South half is unusually rugged because of the rock outcrop and many ledges. The focal point of the scenic area is found in a high bluff near the west boundary line. Splendid views may be had both up and down the river from here. A trail to this spot has already been constructed by the C. C. C. corps.

When this transaction was consummated, the result was an irregular shaped property in which the Paul Nelson forty (SW $\frac{1}{4}$ SW $\frac{1}{4}$ Sec. 7) became a wedge lying in the center of the whole tract. The Nelson land, because of its position and its general park character was a desirable addition to the park. It would round out the area and add many interesting features due to its very rugged terrain.

After careful study, an option was taken to purchase this land, same to be paid for in 1936. It includes all of this forty and a portion of the SE $\frac{1}{4}$ SW $\frac{1}{4}$ Sec. 7 lying west of the main highway. The last mentioned parcel of land is all cultivated land which will be made into an athletic field.

The approximate area of the park is now 155.6 acres. The size is such that it can now be developed into a well rounded out tract that will include all features found in the larger reservations.

After the Vogl land had been purchased last year an F. E. R. A. project was approved for the erection of a fence on the north side of this land. A four strand barbed wire fence was erected last spring.

A project for cleaning up dead and down material was also started but not completed due to the lack of funds.

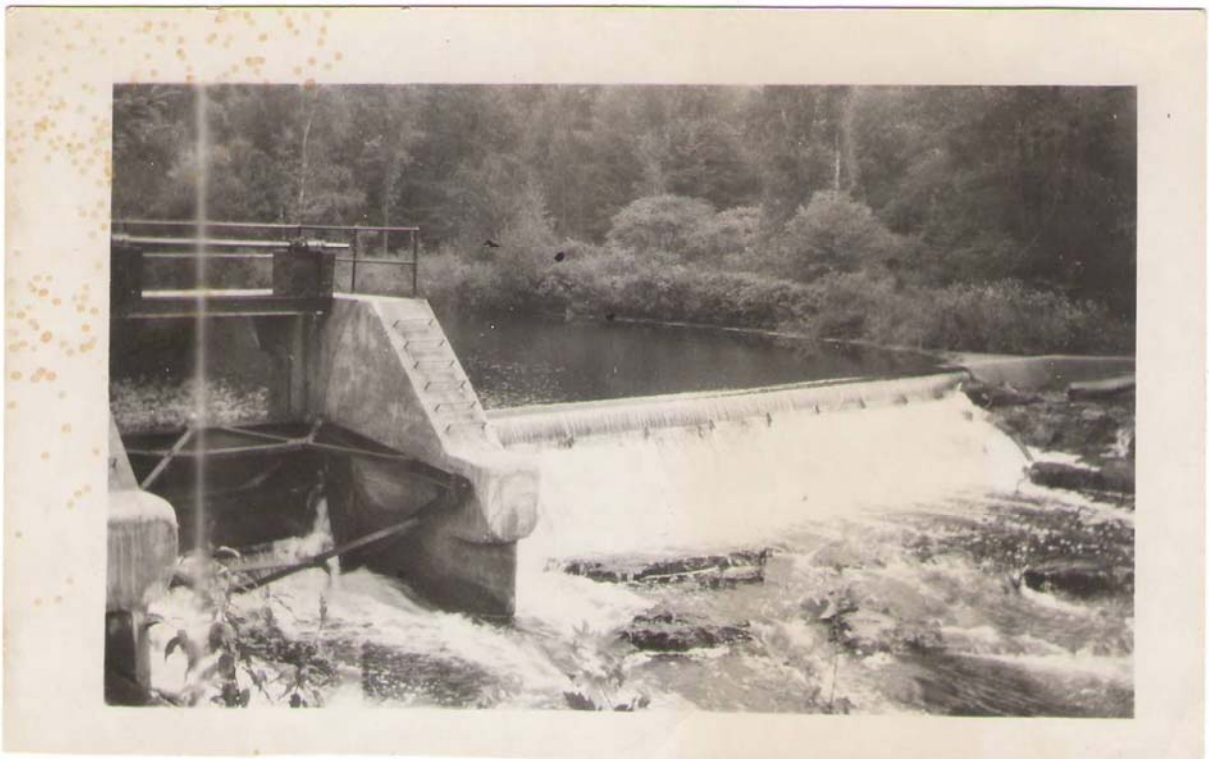
The C. C. C. Camp carried on the work where the F. E. R. A. project stopped. All merchantable material was sawed to wood or into lumber and the brush burned.

A four strand barbed wire fence was erected on the west property line of the new additions by the conservation corps. They also moved the fence along the north boundary of the original park to the new line which was two rods north of the old fence. This strip was part of the land acquired from the Vogl Estate.

A temporary road had to be constructed along the west property line in order to provide means of transporting building material for the foot bridge which is to be erected over the river.

A great amount of rock, some weighing tons, was quarried on the Mathisen land. This material is to be used in the piers and abutments of the bridge and for portals (as the entrances are called) and for use as barriers in the parking areas.

Two truck loads of seedling pines were planted in the park in order to get a coniferous planting started.



Dam Ownership Is Transferred

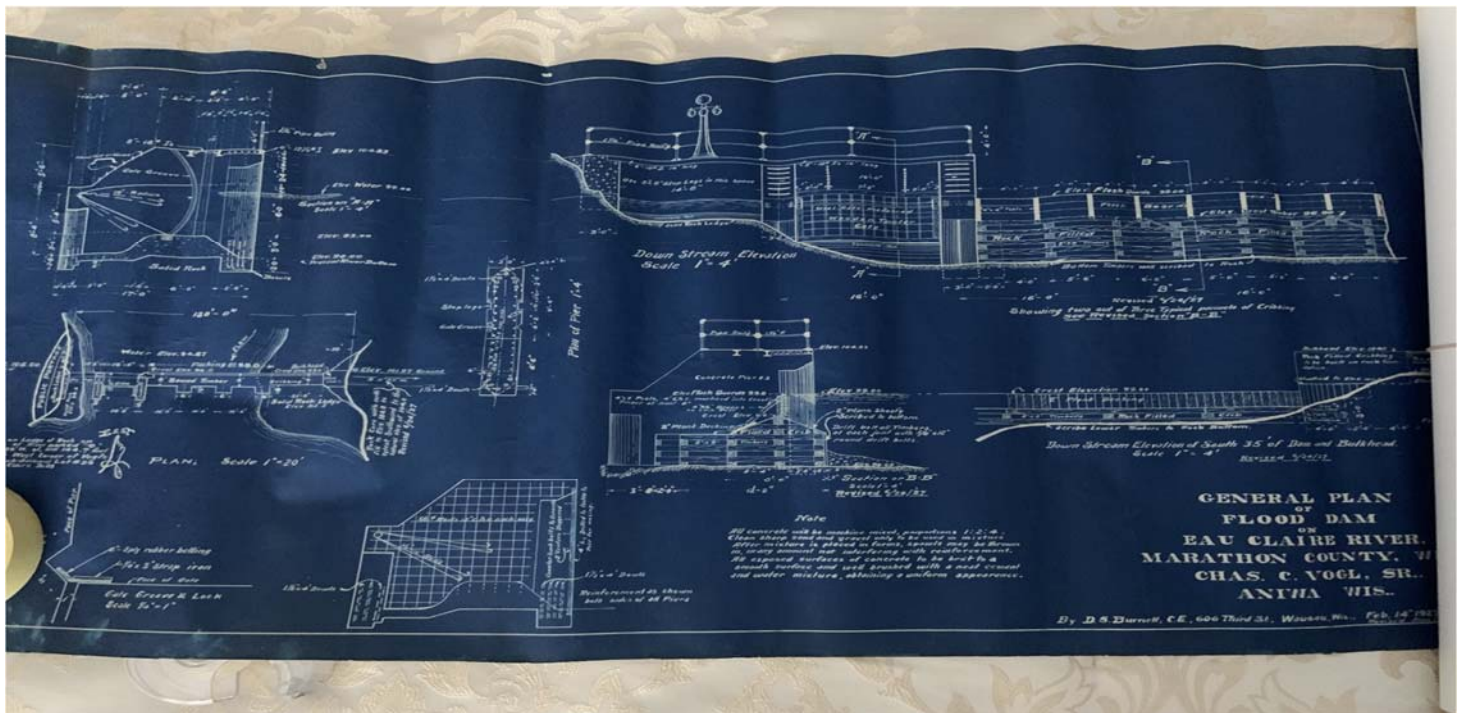
Transfer of ownership of the Eau Claire Dells dam from Mrs. Anna Reed, Aniwa, to Marathon County has been approved by the Department of Natural Resources.

Marathon County purchased property around the dam from Mrs. Reed to enlarge the Eau Claire Dells Park development.

The dam, erected by authority of the former Railroad Commission of Wisconsin in 1927, is a concrete structure with fixed spillway and two water control gates.

The owners transfer permit was among the first issued in Marathon County by the Department of Natural Resources since assuming responsibility for waterways in the state formerly under jurisdiction of the Public Service Commission.

Such matters are now handled by the department's Division of Environmental Protection, formerly known as the Division of Resource Development.



Dam approval documentation

OPINIONS AND DECISIONS
OF THE
RAILROAD COMMISSION
OF WISCONSIN

VOLUME XXX
JULY 26, 1926, TO DECEMBER 19, 1927

Compiled by
WILLIAM M. DINNEEN
Secretary



MADISON, WISCONSIN
1930

IN RE APPLICATION OF C. C. VOGEL, SR., FOR A PERMIT TO
CONSTRUCT, OPERATE AND MAINTAIN A DAM ACROSS
THE EAU CLAIRE RIVER IN MARATHON COUNTY, WIS-
CONSIN

Decided July 14, 1927

MEMORANDUM OF DECISION

Applicant, C. C. Vogel, Sr., seeks a permit to construct, operate and maintain a dam in and across the Eau Claire river in section 7, township 29 north, range 10 east, Marathon county.

At the hearing held at Madison on February 3, 1927, *Smith & Bachhuber* appeared for applicant. There were no other appearances.

The application states that the dam is to be constructed to provide a swimming pool and a pond for boating purposes; that the dam will be constructed of concrete approximately five feet in height, and that no power will be developed. Further that the crest of the dam is to be at elevation 99.00 feet and the normal water surface below the dam will be approximately at elevation 94.87 feet when referred

which will be affected are owned by applicant, and that the normal headwater will not overflow the natural banks of the stream.

The value of the fee title to the dam site and to such flowage lands as have been acquired in fee by applicant, and the value of all other easements, flowage rights and other property necessary for the purposes set forth in the application for the permit, regardless as to whether or not all of such dam site, flowage lands, rights, easements and other property are owned by applicant, is the sum of Two Hundred Dollars (\$200).

The application fully complies with the requirements of Chapter 31 of the Wisconsin Statutes, and the construction, operation and maintenance of the proposed dam will not materially obstruct existing navigation or violate other public rights, and will not endanger life, health or property.

Application *granted*.

Detailed Information for Dam Vogl Dells

Dam Key Seq No	1314	Field File No	37.16
Size	SMALL	NID	10309
Popular Name	Marathon County	Former Name	

Location

County	Marathon	Longitude	-89.334760
Latitude	45.003320	Located TRS	

Permitted TRS

QQQ:NW QQ:SW Q:SE - Sec:07 T:29N R:10E

Contacts

Owner	Marathon County	Contact
-------	-----------------	---------

Waterbody

Drainage Basin (sq mi)	175.00	Impoundment	
Stream		Local Name	
Local Name	EAU CLAIRE	Row and Official Name	
Row and Official Name		Size (acres)	10.00
Navigable?	navigable	Maximum Depth (ft)	4.00
When was navigability determined?			

Regulatory/Inspection

NR 333 Years	EAP: IOM: HYD: STAB: ZONE:		
Auth. Approval Desc	WP280	Regulatory Agency	WIDNR
Hazard Rating	None	Estimated Hazard Rating	Low
Ferc. No		Exempt Issue Date	
Ferc. Inspection Year		License Expiration Year	

Construction Characteristics

Normal Storage (acre-ft)	10.00	Max Storage (acre-ft)	40.00
Structural Height (ft)	13.00	Hydraulic Height (ft)	5.00
Crest Length (ft)	125.00	Spillway Type	Controlled
Discharge Through Principal Spillway (cfs)	5,575.00	Width/Diameter of Principal Spillway (ft)	118.00
Total Discharge Through All Spillways (cfs)	5,575.00	Total Width/Diameter of All Spillways (ft)	
Core Type		Position	
Foundation Type		Foundation Certainty	
Purposes	RECREATION	Structural Types	GRAVITY EARTH

Detailed Information for Dam Vogl Dells

Water Levels

	Normal		Winter	
	MSL	Datum	MSL	Datum
Minimum				
Normal				
Maximum				

Construction History

Designer	Construction Firm	Complete Year
		1942

Outlet Gates

No data found.

Inspection History

Inspection Date	Inspection Report Date	DNR Engineer Initials	Inspection Type
7/24/1980		XXX	LEVEL
7/30/1966		XXX	GEN
7/30/1966	8/3/1966	XXX	LEVEL
8/1/1961	8/14/1961	XXX	LEVEL
8/1/1961		XXX	GEN
7/9/1948	7/15/1948	XXX	LEVEL
9/2/1932	9/2/1932	XXX	LEVEL
8/22/1927		XXX	GEN

Followups

No data found.

Approvals

Approval Date	Docket ID	Approval Type	DNR Engineer Initials
8/1/2006		PLAN APPROVAL-REPAIR, RECON; STAT 31.18	JAS
8/1/1968	3-WR-96	TRANSFER; STAT 31.185B	XXX
7/1/1927	WP-280	PERMIT TO CONSTRUCT-NAV STREAM; STAT 31.06	XXX

Orders

Issue Date	Complied On Date	Docket ID	Order Description
3/25/1982		3-NC-82-9102	Warning Signs

Inspection Schedule

No data found.

File Copy

BEFORE THE
RAILROAD COMMISSION OF WISCONSIN

In the Matter of the Application of
C. C. Vogel, Sr. for a Permit to
Construct, Operate and Maintain a Dam
Across the Eau Claire River in Marathon
County, Wisconsin.

WP-280

The application of C. C. Vogel, Sr. for a permit to construct, operate and maintain a dam in and across the Eau Claire River in the southwest quarter of the southeast quarter of section 7, township 29 north, range 10 east, in Marathon County, Wisconsin, pursuant to the provisions of Chapter 31 of the Wisconsin Statutes, was heard at the office of the commission in the City of Madison on the 3rd day of February, 1927, pursuant to due and statutory notice.

The appearances were Smith & Bachhuber appearing for and in behalf of the applicant.

The application states that the purpose of the proposed dam is to provide a swimming pool and a pond for boating purposes, that the dam will be constructed of concrete approximately five feet in height, and that no power will be developed at the dam.

It further appears from the plans and other records in the case that the crest of the dam is to be at elevation 99.00 feet and the normal water surface below the dam will be approximately at elevation 94.87 feet when referred to the datum of the applicant's engineer; that all the riparian lands which will be affected are owned by the applicant, and that the normal headwater will not overflow the natural banks of the stream.

The application contains the several proposals required by Section 31.09 of the Statutes and pursuant to Subsection (1) of such section the commission has valued the dam site and all flowage

lands and other flowage rights and other property necessary for the purposes set forth in the application for the permit as will hereinafter more particularly appear.

NOW THEREFORE, upon the application and upon the evidence, the records, files and proceedings herein, the Railroad Commission of Wisconsin hereby makes the following findings:

1. That the said application complies with the requirements of Chapter 31 of the Wisconsin Statutes.

2. That upon receipt of the application herein, the Commission fixed a time not more than eight weeks thereafter, and the place at the office of the commission in the capitol at Madison, for a public hearing thereon; that due notice of such time and place for hearing was given to the applicant, and that the applicant caused a notice of such time and place to be published once in each week for three successive weeks in the Wausau Daily Record-Herald, a daily newspaper designated by the commission and published in the City of Wausau, Marathon County, Wisconsin, within which county are situated all the lands that will be affected by the proposed dam.

3. That thereafter said hearing was duly held in accordance with such notice, and the commission did take evidence offered by the applicant and that all persons in interest were given an opportunity to be heard.

4. That the value of the fee title to the dam site and to such flowage lands as have been acquired in fee by the applicant and the value of all other easements, flowage rights and other property necessary for the purposes set forth in the application for the permit, regardless as to whether or not all of such dam site, flowage lands, rights, easements and other property are owned by the applicant, is the sum of Two Hundred Dollars (\$200.00).

5. That the construction, operation and maintenance of the proposed dam will not materially obstruct existing navigation

or violate other public rights and will not endanger life, health or property.

AND HEREBY THERE DOES ISSUE AND IS GRANTED to the applicant, C. C. Vogel, Sr., the permit provided for by subsection (3) of Section 31.06 of the Wisconsin Statutes, for the construction, operation and maintenance of a dam in and across the Eau Claire River in the southwest quarter of the southeast quarter of section 7, township 29 north, range 10 east, in Marathon County as described herein.

Railroad Commission bench marks will be set and their elevation with reference to the datum of the applicant's engineer determined.

Dated at Madison, Wisconsin, this 14th day of July, 1927.

RAILROAD COMMISSION OF WISCONSIN

Adolph Kammberg
M. M. Doocak
Louis E. Gottle
Commissioners

AK-GPS-jb

BEFORE THE
DEPARTMENT OF NATURAL RESOURCES

Application of Anna Reed for a Permit to)
Transfer Ownership of the Eau Claire Dells)
Dam, Also Known as Vogl Dells Dam, in the) 3-WR-96
Eau Claire River in the Town of Plover,)
Marathon County, to Marathon County)

FINDINGS OF FACT AND PERMIT

Anna Reed, Aniwa, Wisconsin 54408, on February 26, 1968, filed an application with the Department for a permit under section 31.185, Statutes, to transfer ownership of the Eau Claire Dells Dam, also known as Vogl Dells Dam in the Eau Claire River in section 7, township 29 north, range 7 east, town of Plover, Marathon County, to Marathon County. Permit granted.

Pursuant to due notice, hearing was held April 30, 1968, at Wausau before Maurice H. Van Susteren.

Appearances:

In Support of the Application:

Marathon County, by

Duane L. Corbin, superintendent of parks
Wausau

Of the Division of Resource Development Staff:

Gerald P. Wallin, land and water use section

FINDINGS OF FACT

1. Anna Reed filed an application with the Department on February 26, 1968, for a permit to transfer ownership of the Eau Claire Dells Dam, also known as Vogl Dells Dam, to Marathon County. Thereafter, the Department set the matter for public hearing at Wausau on April 30, 1968. Notice of the time and place of hearing was given to applicant who, pursuant to Department order, caused the notice of the time and place of

hearing to be published in the Wausau Daily Record-Herald, a newspaper of general circulation published at Wausau, Marathon County, once each week for 3 successive weeks before the date of hearing, the first publication being on March 25, 1968, and the last on April 8, 1968. Proof of such publication was duly filed with the Department. On March 15, 1968, a copy of the notice of hearing was mailed to the clerks of Marathon County and the town of Plover, which are the county and town wherein the dam and the flowage are located. On March 15, 1968, a copy of the notice of hearing was mailed to the Division of Conservation.

2. The Eau Claire Dells Dam is located across the Eau Claire River in section 7, township 29 north, range 7 east, town of Plover, Marathon County. The Eau Claire River is navigable in fact at this location.

3. The dam was permitted by action of the Railroad Commission of Wisconsin on July 14, 1927, in its docket WP-280.

4. The dam is a concrete structure with a fixed spillway and two gates to control the flow of water. One section has a steel tainter gate and the other contains heavy timber stoplogs.

5. The County of Marathon has purchased from Mrs. Anna Reed the dam and that portion of section 7, township 29 north, range 10 east, wherein the Eau Claire Dells Dam is located.

6. Marathon County has purchased the property for a park to provide recreation in the forms of swimming, boating, and fishing.

7. An investigation was made of the dam by the staff of the Department as required by section 31.185, Statutes. It was recommended that no conditions be attached to the permit.

8. Marathon County is a municipality which now has, and will continue to have, the ability to acquire funds needed to operate and maintain the dam in good condition. In the judgement of the Department there is reasonable assurance that the dam will be maintained for a reasonable period of time, not less than 10 years.

CONCLUSION OF LAW

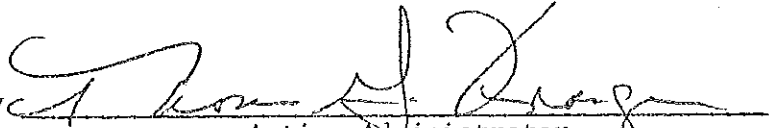
A permit authorizing the transfer of said dam by Anna Reed to Marathon County should be issued by the Department under sections 31.14(2) and (4) and 31.185, Statutes, and Chapter 614, Laws of 1965, and Chapter 75, Laws of 1967, in accordance with the foregoing findings of fact.

PERMIT

AND HEREBY THERE DOES ISSUE AND IS GRANTED a permit under sections 31.14(2) and (4) and 31.185, Statutes, authorizing the transfer of the ownership of the Eau Claire Dells Dam across the Eau Claire River in section 7, township 29 north, range 7 east, Marathon County, from Anna Reed to Marathou County.

Dated at Madison, Wisconsin, AUG 21 1968

STATE OF WISCONSIN DEPARTMENT OF NATURAL RESOURCES
For the Secretary

By 
Acting Administrator
Division of Environmental Protection

37.16

ORDER NUMBER 3-NC-82-9102

FACT FINDING

NAME OF DAM

Vogl Dam

DNR FIELD FILE NUMBER

37.16

WP-280-27

NAME OF STREAM

Eau Claire River

IMPOUNDMENT

COUNTY

Marathon

INSPECTION PARTY

OWNER/AGENT

Chuck Newby and Norman Berndt

INTERESTED CITIZENS/GROUPS

DATE OF INSPECTION

3/25/82

NAME OF OWNER

Marathon County Parks Department

NAME OF AGENT

Charles Newby

STREET OR ROUTE

Courthouse

CITY, STATE, ZIP CODE

Wausau, WI 54401

TELEPHONE NUMBER (INCLUDE AREA CODE)

715-847-5000

DNR INSPECTOR

Mitchell Zmuda

FERC

NAVIGATION AND DAM FACTS

1. IN VICINITY OF DAM

A. UPSTREAM

Swimming beach 500 feet upstream from the dam. Canoeing use on river upstream from the park.

B. DOWNSTREAM

Dells of the Eau Claire, with steep rock cliffs and fast water.

2. APPARENT EXISTING USE

A. UPSTREAM

Swimming, canoeing

B. DOWNSTREAM

Dells of the Eau Claire

C. PORTAGE

None noted (Dells below the dam deter most canoeist)

3. HAZARDS (USE APPROPRIATE ITEMS UNDER D 1-11 OR OTHERS.)

A. UPSTREAM

Roller Dam 4, 3

B. DOWNSTREAM

Rock out crops.

C. PORTAGE

Unknown, 5

D.

1. DANGEROUS CURRENTS
2. POTENTIAL FOR HIGH WAVE ENERGY
3. GATED SPILLWAYS
4. OPEN SPILLWAYS
5. STEEP SLOPES
6. UNFENCED DROPOFFS
7. ELECTRICAL TRANSMISSION GEAR
8. DANGEROUS TAKEOUT CONDITIONS
9. POWER HOUSE INTAKE/OUTLET
10. AUTOMATIC GATES
11. BARBED WIRE HAZARDS

SIGNS, DEVICES AND PORTAGE FACILITIES

1. EXISTING

A. SIGNS AND LOCATIONS

None

B. DEVICES AND LOCATIONS (INCL. LIGHTS, HORNS, SIRENS, ETC.)

None

C. PORTAGE FEATURES AND LOCATIONS

None

CONCLUSIONS OF LAW

The Department has authority pursuant to ss. 31.02 and 31.18, Wis. Stats., and NR 330, Wis. Admin. Code, to require dam owners to install and maintain signs and devices necessary to provide adequate warning and safety for boaters and to prescribe portage requirements for appropriate dams. The order contained hereinafter is necessary and proper in accordance with the foregoing findings of fact to provide adequate warning and safety pursuant to ss. 31.02 and 31.18, Wis. Stats., and NR 330, Wis. Admin. Code.

ORDER

2. REQUIRED (IF EXISTING FEATURES ARE ADEQUATE, WRITE "SAME")

A. SIGNS LOCATIONS

Dam, place facing upstream in center of dam

B. DEVICES AND LOCATIONS (INCL. LIGHTS, HORNS, SIRENS, ETC.)

None

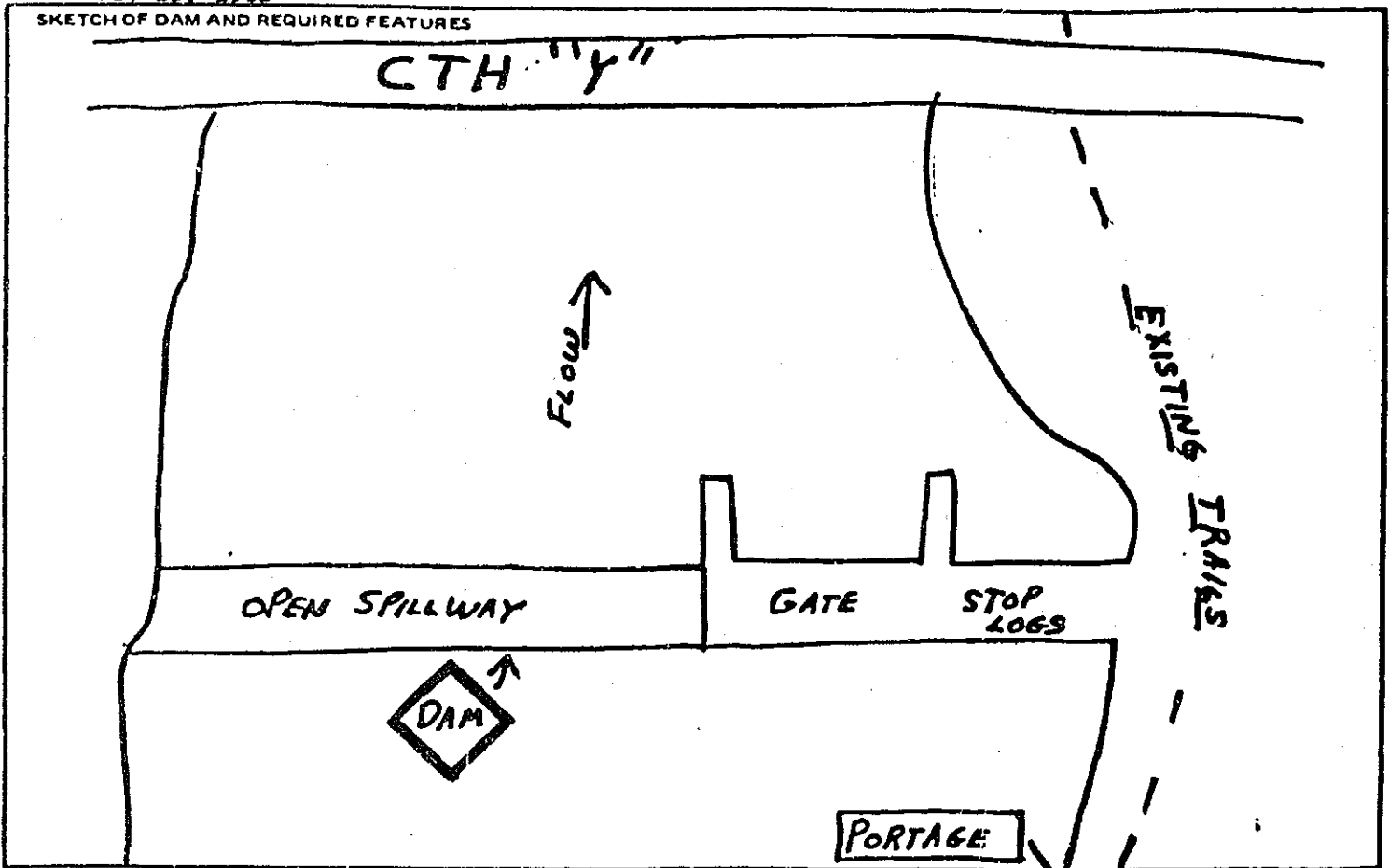
C. PORTAGE FEATURES AND LOCATIONS

Portage trail and portage signs.

INSTALLATION COMPLETION DATE

July 15, 1982

SKETCH OF DAM AND REQUIRED FEATURES



State of Wisconsin
Department of Natural Resources
For the Secretary

Inspected By
Signature

By

John D. Beach

Date *June 9, 1982*

Michael J. Jundt

May 25, 1983

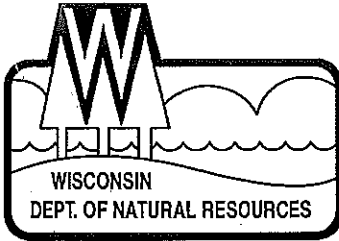
Signs, devices and portage features for the WELL OF EAU CLAIRE Dam were inspected and found

to conform with Wis. Administrative Code NR 330.04 and 330.05 on: May 20, 1983

INSPECTED BY - SIGNATURE

DATE

Michael J. Jundt May 20, 1983



State of Wisconsin \ DEPARTMENT OF NATURAL RESOURCES

Jim Doyle, Governor
Scott Hassett, Secretary
Scott Humrickhouse, Regional Director

Wisconsin Rapids Service Center
473 Griffith Avenue
Wisconsin Rapids, Wisconsin 54494-7859
Telephone 715-421-7800
FAX 715-421-7830

August 25, 2006

Peter Knotek
Wausau and Marathon County Parks, Recreation and Forestry
212 River Drive, Ste.2
Wausau, WI 54403

Subject: Plan Approval for the Vogl Dells Dam in the Eau Claire County Park, Marathon County, FF# 37.16

Dear Mr. Knotek:

With this letter we are sending you approval of the plans for repair of the Vogl Dells Dam in Eau Claire County Park. If the location of the cofferdam should change from what is shown in the plans, please submit plan changes to this office for approval.

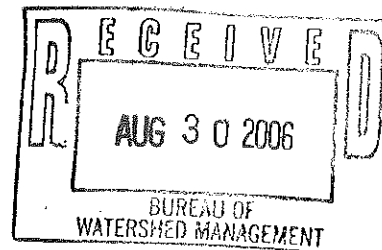
Please contact Keith Patrick at (715) 241-7502 regarding any Chapter 30, Wis. Stats., issues or concerns.

Please feel free to contact me with any further questions at (715) 421-7862.

Sincerely,

Julia A. Stephenson
Water Management Engineer
Wisconsin Rapids Service Center

cc: Meg Galloway, WDNR, State Dam Engineer
Ayres Associates, 3433 Oakwood Hills Parkway, Eau Claire, WI 54702-1590
James Burgener, Marathon County Planning and Zoning, 210 River Drive, Wausau, WI 54403
Chris Knotts, ACOE, 1314 Contractors Blvd., Plover, WI 54467
Keith Patrick, WDNR, Wausau
Conservation Warden, WDNR, Wausau



**BEFORE THE
DEPARTMENT OF NATURAL RESOURCES**

IN THE MATTER of Plan Approval) IP-WC-2006-0334CW
for Repair of)
the Vogl Dells Dam in the Eau Claire Park)
in Marathon County)

FINDINGS OF FACT

1. The Department of Natural Resources has examined the plans for repair of the Vogl Dells Dam in the Eau Claire Park, located in the NW ¼, of the SE ¼, of Section 7, Township 29 North, Range 10 East, Marathon County, on the Eau Claire River.
2. The plans include, but are not limited to, a new steel tainter gate, new stop log assembly, new concrete pedestrian walkway, associated concrete repair and construction of temporary cofferdams during dam repair.
3. This project will not affect the historic levels of the impoundment once completed.
4. The impoundment has been at run of river level since the damage to the structure was incurred during spring flooding in 2004.
5. This plan approval also includes the cofferdam details as submitted.
6. This dam was classified as a small dam.

CONCLUSIONS OF LAW

1. The review has been conducted in accordance with Chapter 31, Wisconsin Statutes.
2. The Department has determined that the project complies with Section 1.11, Wisconsin Statutes, and Section NR 1.95, Wisconsin Administrative Code.

APPROVAL

1. The plans are hereby approved in accordance with Chapter 31, Wisconsin Statutes.
2. The approved plans are not transferable, and shall become null and void unless the repairs are completed within 3 years from the date the plans were approved.

CONDITIONS OF APPROVAL

1. The repairs to be performed shall not affect the surrounding environment.
2. The erosion control measures must be initiated prior to the start of construction. The erosion control shall be modified, based on the judgment of the engineer, to be as effective as possible during the construction, but at all times must meet the minimum protection as described in the Wisconsin Construction site Best Management Practice Handbook.
3. The water diversion shown on the plans shall at all times provide for the safe passage of the 10-year flood. The cofferdams shall be completely removed upon completion of the project. Cofferdam material must be contained within the limits shown on the plans. Earthen cofferdams will not be allowed.
4. Benchmarks installed both on and off the dam must be protected.
5. **Section 31.12(4), Wisconsin Statutes, requires a verified statement to be filed with the Department within 10 days after completion of the repairs to the dam, stating that it was constructed in accordance with the plans and specifications approved by the Department.**
6. You are responsible for obtaining any permit or approval that may be required for your project by local zoning ordinances or by the U.S. Army Corps of Engineers before starting your project.
7. This approval does not authorize any work other than what you specifically describe on your plans and in your specifications, and as modified by the conditions of this permit. If you wish to alter the project or permit conditions, you shall first obtain written approval of the Department.
8. There will be no dredging allowed.

NOTICE OF APPEAL RIGHTS

If you believe that you have the right to challenge this decision, you should know that Wisconsin statutes and administrative rules establish time periods within which requests to review department decisions must be filed.

To request a contested case hearing pursuant to Section 227.42, Wisconsin Statutes, you have 30 days after the decision is mailed or otherwise served by the Department of Natural Resources.

This notice is provided pursuant to Section 227.48(2), Wisconsin Statutes.

This Decision was mailed on 8-25-06.

STATE OF WISCONSIN DEPARTMENT OF NATURAL RESOURCES
For the Secretary

By Julia A. Stephenson
Julia A. Stephenson
Water Management Engineer

Summary Sheet

Name of Dam Vogl File No. 37.16 County Marathon

Location SW 1/4 SE 1/4 Section 7 T 29 N, R 10 W

Stream Eau Claire River Name of Lake Held by Dam

Present Owner Henry Stutz Marathon Co.

Existing Bench Marks

Bench Mark 645-B is a tablet marked, Railroad Commission of Wisconsin, set in the downstream of the right abutment wall. Elevation 103.04.

Bench Mark 645-C is a tablet marked, Public Service Commission of Wisconsin, set in ledge rock. Bench mark is located 100.0 feet downstream from the line of the gates and 64.0 feet southwest of the southwest corner of the house to the right of the dam.

Elevation 102.68

Lake or Stream

Vogel Dam

Eau Claire River

Location

Sec. 7, T. 29N, R. 10E

Marathon River

Date	Taken by	Field Book No.	Lake Level or Gage Reading	Remarks
8/22/27	W. Muegge	817	92.63'	Datum - Assumed B.M. 645A - 100.00'
9/2/32	W. Muegge	869	97.93'	Same
7/9/48	R. Churchward	911	97.59'	Same
8/1/61	G. Tamke	955	97.85'	Same
7/30/66	F. Stein	982	95.83'	Same B.M. 645 B.
7-29-80	J. VanLoon	1079	96.37	BM 645 C Elev. 102.68
7/27/81	Bellows	1085	96.36	BM 645-B

AUTHORIZATION - WP-280-27

COMM ACTION

WP-280-27 - Application to construct
and maintain dam (granted) crest 99.00

OPERATING RANGE POND LEVEL 97.6 - 98.0

H. J. Wolfenger

37.16

Report by

Engineering Department
Railroad Commission of Wisconsin

Date

WATER-POWER DEVELOPMENT INVESTIGATION Mississippi River DRAINAGE BASIN

IDENTIFICATION

Name of stream on which power is located Eau Claire

County Marathon Town _____

SW¹/₄, SE¹/₄ Sec. 7 T. 29 N R. 10 E

Distance to Aniwa (nearest P.O.) STHY # 52-9 Miles

Name of next tributary stream above _____

" " " " below _____

Legal name of dam Vogl.

Name of mill or power station -

Name of owner C.C. Vogl Address ANIWA.

Name of operator _____ Address _____

Is dam still in existence? _____

HISTORICAL

Name of original grantee C.C. Vogl.

Date of original franchise or permit 1927

Date and conditions of renewal _____

Duration of original grant _____

Where recorded _____ Chapter _____

- Purpose of grant:
- (a) Protection of navigation
 - (b) Log driving _____
 - (c) Power purposes _____
 - (d) Mill purposes _____
 - (e) For pond or lake storage
- (Note-strike) (c) Power purposes _____
- (out purposes) (d) Mill purposes _____
- (not obtaining) (e) _____

Year dam was first constructed 1927

- Type of original dam
- (a) Concrete
 - (b) Timber
 - (c) Earthen _____

Memorandum

One page

BENCH MARKS 645A and 645B
VOGL DELLS DAM
OWNED BY C.C. VOGL, ANIWA, WISCONSIN
(FIELD BOOK 617)

37.16

Submitted by W.A. Muegge,
August 22, 1927.

The proposed dam will be located on the Eau Claire River, just above the Dells, in Sec. 7, T. 23 N., R. 10 E., Marathon County, Wisconsin.

The dam will be located 9 miles ^{west} east of Aniwa, near S.T.H. #52.

Very little construction work has been done on the dam, except a partial coffer dam. Mr. Vogl stated that the dam is to be built this fall.

Bench marks were set in accordance with authority granted by Chapter 31.02 of the Wisconsin Statutes.

Bench Mark 645A is a square notch out in top of ledge rock near edge of stream. It is located 87 feet downstream from center line of pit dug for dam, 80 feet downstream from 14" soft maple tree and 44 feet upstream from 12" pine tree on ~~south~~ ^{North} side of river. Elevation assumed 100.00'.

Bench Mark 645B is a bronze tablet marked Railroad Commission, State of Wisconsin, to be set in top of dam wall by contractor when dam is being constructed. ^{Right and of Dam.}

Elevation of water above coffer dam was taken and found to be 92.63 feet.

Supplementary Memorandum

One Page
37.16

VOGL DELLS DAM
OWNED BY C.C. VOGL
(FIELD BOOK #869)

Submitted by W.A. Muegge
September 2, 1932

Benchmark 645-B was established and elevations were taken on
September 2, 1932.

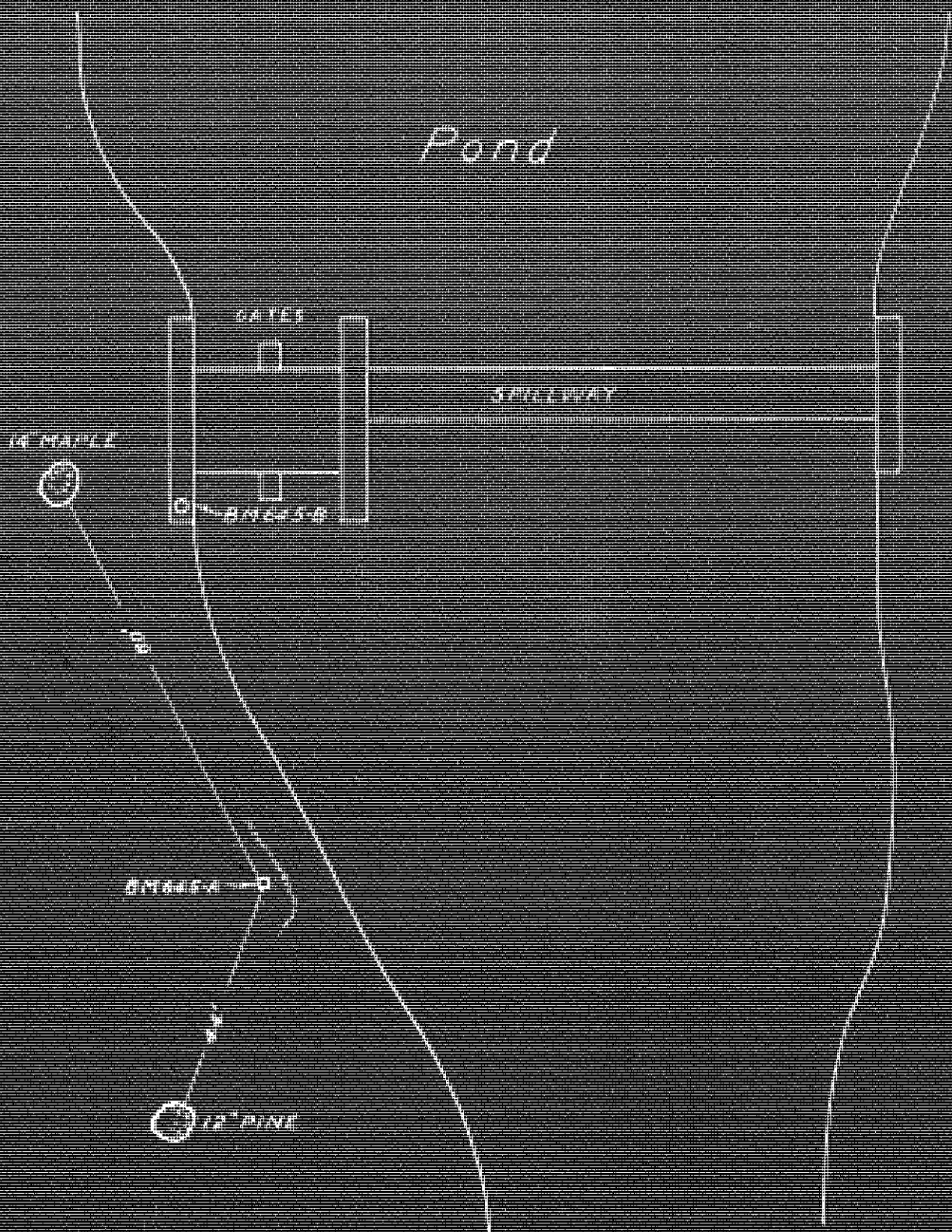
Benchmark 645-B is a bronze tablet, marked Railroad Commission
of Wisconsin, set in downstream end of right downstream abutment wall
of dam. Elevation when referred to datum of Benchmark 645-A is 103.04 ft.

The following elevations are referred to datum of Benchmarks
645-A and 645-B:

Pond level	97.93 ft.
Highwater mark - observed	98.03
Water below dam	91.53
Sill of right gate 14.5 ft. wide	93.71
Top of " " stop logs	97.81
Sill of tainter gate 13 ft. wide	91.20
Top of " " "	98.23
Crest of spillway right end - approx. 90 ft. long	94.38
Flash of " " "	97.90
" " left " - approx.	97.85
Concrete over gates	103.03

VOGL DELLS DAM

BENCHMARK



Memorandum

One Page

37.16

VOGL DELLS DAM
OWNED BY H. J. WOLFINGER
FIELD BOOK #911

Submitted by R. A. Churchward
July 15, 1948

Benchmarks were checked and elevations taken on July
9, 1948

A new concrete spillway was built by the present owner
in 1942.

The following elevations are referred to the datum of
benchmarks 645A and 645B:

Water above dam	97.59 ft.
Water below dam	88.78
High water mark obs.	97.79
Sill of right gate - wooden	93.71
Top " " "	97.96
Sill of left gate - tainter	91.24
Top " " "	98.28
Crest of spillway - right end	95.45
Flash " " " "	97.17
Crest " " left "	95.51
Flash " " " "	97.28
Top of concrete at left end of spillway	97.85

- - - -

Memorandum

37.16

VOGL DELLS DAM
OWNED BY HENRY STUTZ
FIELD BOOK 955

Submitted by Glen R. Tamke
August 14, 1961

Bench marks were checked and elevations taken on
August 1, 1961.

Bench marks 645-A is redescribed as being a square notch cut in top of ledge rock near right edge of the stream. It is 87 feet downstream from center line of pit dug for dam, 44 feet upstream from 15 inch pine tree on the north side of the river and 61.9 feet in a south westerly direction from the southwest corner of a house on the right (north) bank of the stream. Elevation is 100.00 feet.

The following elevations are referred to the datum of bench marks 645-A and B.

Pond level	97.85 feet
Water downstream from dam	89.56
Sill of right gate - stoplog	93.67
" " left gate - tainter	91.12
Top of right gate 14.5 ft. wide	97.52
" " left gate 13.0 " "	98.23
Crest of spillway right end	95.42
Flash of spillway " "	97.07
Top of concrete right end of spillway	103.02

- - - - -

PUBLIC SERVICE COMMISSION OF WISCONSIN
ENGINEERING DEPARTMENT
INSPECTION OF DAM

File No. 3716
Date 8-1-61
Inspected by _____

Name of dam Vogel Dells Dam Stream Eau Claire River

Owner of dam Henry Statz Address Rt. #1, Aniwa

Present purpose of dam Pond Level Normal pondage — Acres

Type of dam Gravity - concrete

Has dam been rebuilt or repaired? (Dates?) —

Condition of structure

Concrete Good

Masonry None

Timber Good

Flood Capacity

I. Gates

Number	Type	Width	Top Elevation	Sill Elevation
<u>1</u>	<u>Stoplog</u>	<u>14.5 ft.</u>	<u>97.52 ft.</u>	<u>93.67 ft.</u>
<u>1</u>	<u>Tainter</u>	<u>12.0 "</u>	<u>98.23 "</u>	<u>91.12 "</u>

II. Spillways

Number	Length	Crest Elevation	Flash Elevation
<u>1</u>	<u>ft.</u>	<u>95.42 RT. end ft.</u>	<u>97.07 RT. end ft.</u>

III. Fishways

IV. Available freeboard to elevation _____ ft.

Operating Head

Head water elevation observed _____ ft. Tailwater elevation _____ ft.

Highwater mark observed _____ ft.

Headwater elevation _____ ft. Operator
Maximum _____ ft. Minimum _____ ft. Normal _____ ft.

Maximum load plant can pull-normal head _____

What is condition of tailrace? _____

Maximum known flood:
Elevation _____ ft. No gates open _____ Date _____

Remarks: _____

VOGL DELLS DAM
OWNED BY HENRY STUTZ
FIELD BOOK #982

Submitted by F. C. Stein
August 3, 1966

Bench Mark 645-B was located and elevations were taken on
July 30, 1966.

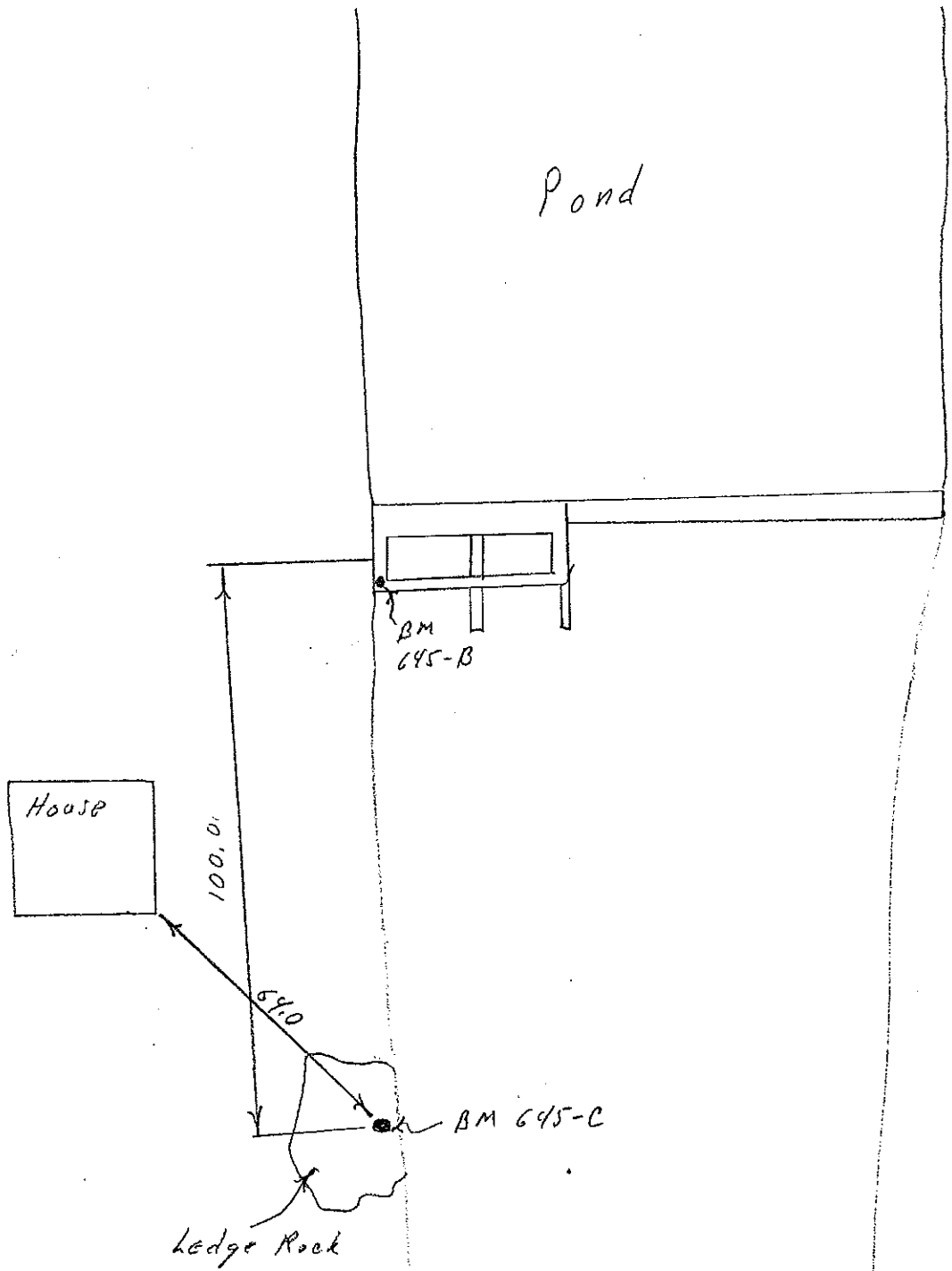
Bench Mark 645-A could not be located.

Bench Mark 645-C was established and is described as a tablet
marked, Public Service Commission of Wisconsin, set in ledge rock. The
tablet is located 100.0 feet downstream from the line of the gates and
64.0 feet southwest of the southwest corner of the house to the right
of the dam. Elevation 102.68 when referred to the datum of Bench Mark
645-B.

The following elevations refer to the datum of Bench Mark
645-B:

Right abutment	103.01 feet
Abutment between gates & spillway	103.05 "
Sill, right gate	93.67 "
Top stoplog, right gate	97.47 "
Sill, left gate	91.19 "
Top taintor gate	98.10 "
Right crest of spillway	95.52 "
High water mark	97.52 "
Freesboard	100.6 "
Pond level	95.83 "
Tailwater	90.41 "

Vogel Dells Dam
37.16
F.C.S.
Aug. 4, 1966



PUBLIC SERVICE COMMISSION OF WISCONSIN
ENGINEERING DEPARTMENT
INSPECTION OF DAM

File No. 37.16
Date 30 July 66
Inspected by FCS + M/JM

Name of Dam Vogel Dells Stream Eau Claire River
Owner of dam Henry Stutz Address Rt #1 Aniwa
Present purpose of dam Recreation Normal pondage _____ Acres
Type of dam _____

Has dam been rebuilt or repaired? (Dates?) Not since last inspection

Condition of structure

Concrete Some spalling on lower portions of abutments. Several sections of the spillway are breaking out
Gates: Mooney Tainter gate has some bent braces also considerable leakage past the gate
Timber Good

Flood Capacity

I. Gates

Number	Type	Width	Top Elevation	Sill Elevation
1	Stanton	14.5 ft	92.42 ft	93.67 ft
1	Tainter	13.0 "	98.10 "	91.19 "

II. Spillways

Number	Length	Crest Elevation	Flash Elevation
1	ft	95.52 ft	ft

III.

III. Fishways

IV. Available freeboard to elevation 100.6 FT.

Operating Head

Head water elevation observed 95.83 ft. Tailwater elevation 90.41 ft.

Highwater mark observed 97.52

Headwater elevation _____ FT. Operator _____
Maximum _____ ft. Minimum _____ ft. Normal _____ ft.

Maximum load plant can pull-normal head _____

What is condition of tailrace? _____

Maximum known flood:

Elevation _____ ft. No gates open _____ Date _____

Remarks: _____

8 95.83
90.41
12.3

Name Vogel

Field File No. 37.16

Owned by Macathon Co.

County Marathon

Address _____

Field Book No. 1079

Date of Survey 7-27-80

Survey Crew J. Van Loenen, S. Maxwell, C. Bellows

Benchmark(s) 645-B & 645-C were (was) located and checked.
 Benchmark(s) _____ were (was) established and is(are):

_____ elev. _____

Elevations referred to benchmark 645-C (EI. 102.68)

	Width	Top Elev.	Sill Elev.
1) Headwater (Gage Reading)		<u>96.37</u>	
2) High Water Mark		<u>96.58</u>	
3) Tailwater		<u>91.29</u>	
4) Downstream bed		<u>90.0</u>	
5) Gate(s)			
<u>Tainter</u>	<u>13.0</u>	<u>98.05</u>	<u>91.14</u>
<u>Stop log</u>	<u>14.5</u>	<u>95.95</u>	<u>93.68</u>

5) Spillway(s)	Width	Crest Elev.	Sill Elev.
<u>Lt sect</u>	<u>16.5'</u>	<u>95.84 97.85</u>	
<u>Rt</u>	<u>60</u>	<u>95.76</u>	

7) Dike	Length	Elev. of Low Point	Sill Elev.
<u>Lt</u>	<u>50' est</u>	<u>100.98</u>	
<u>Rt</u>	<u>100' est</u>	<u>101.58</u>	

8) Power Capacity None
 Condition of powerhouse None

9) Downstream hazards None

10) Upstream warning signs None

11) Portage signs None

12) Comments: _____

J B Van Loenen



AT Vogt's AMUSEMENT PARK - LAU CLURE DELLS - NEAR ANTON, WIS.



We Specialize in Serving Private Parties



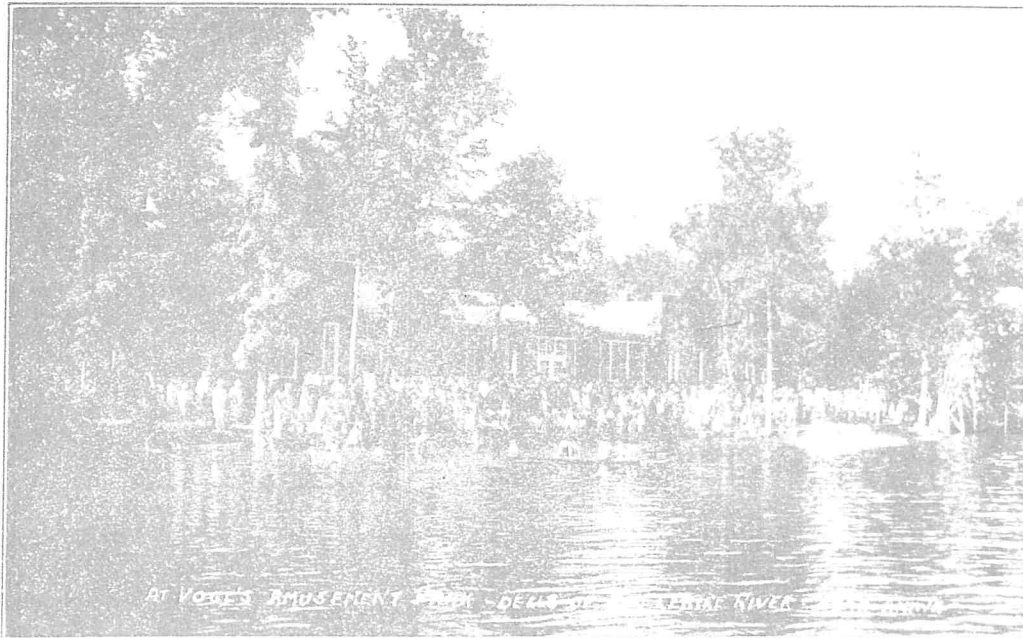
VOGL'S PARK

●
Eau Claire Dells

Phone 86-F-3

Biramwood, Wisconsin

Dancing
Boating
Swimming
Cafe and Tavern



1 Mile South of Highway 52 -- Wisconsin's Beauty Spot

Vogls Recreation, Picnic & Amusement Park

Everything to Entertain

Chas. C. Vogl, Sr. Owner & Prop.

Home Address ANIWA, WIS.

Park Address ANIWA, WIS. R. F. D. No. 1

ANIWA, WIS.....19....

NATURE'S MOST BEAUTIFUL
PARK FOR PICNICS, SCHOOL
AND ORGANIZATION OUTINGS
LOCATED 18 MILES EAST OF
WAUSAU, WIS., ON S. T. H. 52
18 MILES S. W. OF ANTIGO, WIS.
ADJOINING MARATHON COUNTY
PARK AND THE DELLS OF THE
EAU CLAIRE RIVER
SOME OF THE MOST SCENIC
VIEWS IN THE STATE
MUSIC, JOY AND LAUGHTER
PICNICS, OUTINGS AND BANQUETS
IN THE VERY HEART OF NATURE

FREE PICNIC GROUNDS
IDEAL BATHING BEACH
CHILDREN'S PLAY GROUNDS AND
LITTLE TOT'S BATHING BEACH
RIVER EXCURSIONS, WATER
TOBOGGAN, WATER SLIDES,
DIVING BOARDS AND
MEERY GO ROUND
CLUB HOUSE AND
DANCE FLOOR 54X96
FOR PUBLIC AND PRIVATE
PARTIES AND DANCES
COTTAGES FOR RENT OR SALE



Updated as of February 17, 2021

2021-23 WISCONSIN STATE BIENNIAL BUDGET SUMMARY

On February 16, 2021, Governor Tony Evers released his 2021-23 Executive Budget proposal (2021 Senate Bill 111) before a joint session of the Wisconsin State Legislature. County-related highlights of the Governor's two-year spending plan include:

- 0.5% sales tax option for counties, subject to voter referendum
- 2% increase in 2021 and 2% increase in 2022 in Shared Revenue
- 2% General Transportation Aids (GTA) increase in each year of the biennium
- \$75 million for reauthorization of the Multi Modal Supplement Program (MLS Program)
- 2.5% increase in General Transit Aids
- \$3 million for county GIS grants and \$7.5 million in second year of the biennium for county 911 grants
- 10-year renewal of the stewardship program
- \$12.7 million for full funding of County Conservation Staffing and Cost Sharing Grants
- \$15 million in increased TAD funding
- \$10 million in increased funding for local health departments
- Significant investment in mental health crisis services, including emergency detention
- \$1.5 million for child welfare worker training
- \$11.8 million in additional funding for county child support agencies
- \$10 million increase in each calendar year for the Children and Family Aids appropriation
- Grant program for community based juvenile services
- Expansion of dementia care specialists statewide
- \$18.8 million increase in youth aids for elimination of the serious juvenile offender program
- \$10 million sum sufficient appropriation to counties for responsibility of 17-year old juvenile offenders.
- \$200 million broadband investment
- \$300,000 annual broadband grant to local governments

The following pages represent the Wisconsin Counties Association's (WCA) initial summary of the Governor's budget, separated by WCA issue area. As additional budget information is released, the document will be updated, and the most recent version will be available on the WCA website at www.wicounties.org.

If you have any questions about county-related items included in the budget summary, please contact the WCA Government Affairs Team.

AGRICULTURE, ENVIRONMENT AND LAND USE

Stewardship Reauthorization: The Governor's budget extends the Warren Knowles-Gaylord Nelson Stewardship 2000 Program until fiscal year 2031-32 at \$70 million per year. The proposal also provides \$700 million in bonding authority for the program.

Tipping Fee Exemption: The Governor's budget includes an exemption from tipping fees for up to 30% of tonnage received for Waste to Energy facilities in both Barron and La Crosse counties.

Grants for Local Organizations that Coordinate Grazing: The Governor's budget requires the Department of Trade Agriculture and Consumer Protection (DATCP) to promote the dairy industry by providing grants to local organizations that coordinate grazing.

PFAS: Provide \$1 million SEG in fiscal year 2021-22 for the collection and disposal of firefighting foam that contains PFAS.

Soil and Water Resource Management Bond Authority and Cost Share Grants: The Governor's budget provides \$7 million in bonding for grants to counties for implementation of land and water resource management plans, including cost-share grants to landowners through the Soil and Water Resource Management.

Snowmobile Trails: The Governor's budget provides \$200,000 SEG in each year for snowmobile trail mapping.

All-Terrain Vehicles and Utility Terrain Vehicles: The Governor's budget provides funding for all-terrain vehicle and utility terrain vehicle trail maintenance, trail development, and recreational projects by \$250,000 SEG in each year. The proposal also increases the funding for county and local all-terrain vehicle and utility terrain vehicle trail projects and support facilities by \$617,500 SEG in each year.

Deer Carcass Disposal: The Governor's budget provides \$1 million SEG in one-time funding in fiscal year 2021-22 to issue grants for the purchase of deer carcass disposal sites.

Dam Repair and Removal: The Governor's budget provides \$6 million in GPR-supported general obligation bonds for grants to be used for dam repair, reconstruction and removal projects. This is an increase of \$2 million from the 2019-21 proposal.

Climate Change Policy: The Governor's budget requires a comprehensive plan be developed by municipalities to address climate change, requires that local hazard mitigation plans include climate change, and requires communities throughout the state to include climate change in their community health improvement assessment and plans.

Concentrated Animal Feeding Operations (CAFO's): The Governor's budget increases the annual fee assessed to operators of a CAFO and establishes an application fee for new operators of a CAFO.

Sealants: The Governor's budget prohibits the sale and use of sealants that contain coal tar, coal tar pitch, coal tar volatiles, or high concentrations of polycyclic aromatic hydrocarbons.

County Conservation Staffing and Cost Sharing Grants: The Governor's budget provides a \$3,708,000 annual increase in grant funding to counties for county conservation staff to support land and water conservation activities. The annual base funding allocation for the program will increase from \$8.96 million annually in the 2019-21 biennium to \$12,668,000 million annually in both years of the 2021-23 biennium.

Climate Change: The Governor's budget provides \$1.8 million GPR in each year for grants to counties for additional county conservation staff to support climate change resiliency efforts.

Invasive Species: The Governor's budget provides \$961,400 for local cooperative invasive species management areas to support the control of terrestrial invasive species.

County Forest Acreage Share Payments: The Governor's budget increases the County Forest Acreage share payment from \$0.30 per acre to \$0.63 per acre as a "payment in lieu of taxes."

Pierce County Islands Wildlife Area Restoration: The Governor's budget provides one-time funding in the amount of 3,000,000 for the Pierce County Wildlife Area restoration project.

Private On-site Wastewater Treatment System Replacement or Rehabilitation Program (Wisconsin Fund): The Governor's budget eliminates the sunset date (June 30, 2021) for the Private On-Site Wastewater Treatment System Replacement or Rehabilitation Program. The proposal provides for \$840,000 in both years of the biennium. The program seeks to assist residence owners and small commercial establishments meeting certain income and eligibility criteria to repair or replace eligible failing private on-site wastewater treatment systems.

Targeted Runoff Management: The Governor's budget authorizes \$6.5 million in bonding for grants to counties for capital projects that implement land and water resource management plans under the Targeted Runoff Management program.

Clean Energy Projects: The Governor's budget requires the Public Service Commission to create a model ordinance for counties to establish a property assessed clean energy (PACE) financing program. The proposal also authorizes the Focus on Energy program to allocate funds to market PACE programs across the state. In addition, the proposal also authorizes regulated utilities to offer inclusive on-bill financing for energy efficiency improvements.

COUNTY ORGANIZATION AND PERSONNEL

Elections: The Governor's budget includes several provisions impacting Wisconsin elections.

- The budget includes GPR for the Wisconsin Elections Commission (WEC) to work with the Department of Transportation to begin automatic voter registration.
- Allow a municipal clerk the option to canvass absentee ballots on the day prior to the election after working with the WEC to ensure it will be conducted fairly and appropriately (aka Monday legislation).
- Expanding voting access by eliminating the restriction of how soon a person may complete an absentee ballot in person and further recommending that a person may complete an absentee ballot in person no later than 7:00 p.m. on the Friday preceding the election.
- Modify the scheduling of special elections to ensure they are scheduled with sufficient time to comply with federal requirements for sending ballots to military and overseas voters.
- Authorizing the WEC to reimburse counties and municipalities for certain costs incurred in the administration of special primaries and special elections.
- Modifying the WEC recount appropriation to allow local units of government and petitioners to be reimbursed in a timely manner.

Broadband: The Governor’s budget provides a \$200 million investment in broadband. The main focus of this investment is an increase in the funding for the Broadband Expansion Grant Program at the Public Service Commission (PSC). The Governor’s budget provides \$151.7 million over the biennium comprised of GPR with the exception of the statutory requirement of \$2 million annually from the state’s Universal Service Fund.

Further, the budget eliminates restrictions that certain municipalities defined as “underserved” or “unserved” to directly invest in broadband infrastructure and provide service to residents. These communities would apply directly for broadband grants from the PSC.

Finally, a Broadband Line Extension Grant Program would be created and funded at \$1.75 million GPR in FY22 and \$3.5 million in FY23. Line extensions are often seen as cost-prohibitive and service providers have no legal obligation to provide the service. This grant would provide financial assistance to the household, with a cap of \$4,000, to help subsidize the cost of connecting to the broadband infrastructure.

UW-Extension: The Governor’s budget includes \$2 million and 15 county-based agriculture positions for UW-Extension.

Equity Grants: The Governor’s budget creates three equity grant programs to provide funding for public, private, and nonprofit entities to advance equity initiatives. The Department of Administration, Department of Children and Families, and Department of Health Services will administer \$50 million GPR in equity grants.

Open Records Location Fee: The Governor’s budget increases the threshold that a governmental entity may charge an open records location fee from \$50 to \$100.

County Veterans Service Office: The Governor’s budget includes a 5 percent increase to grants for CVSOs across Wisconsin.

Labor Changes: The Governor's budget makes several modifications to labor practices including:

- Repealing the prohibition on contracts between labor unions and employers that specify the employer may only hire unionized workers. Also repeal the prohibitions on the following as a condition of obtaining or continuing employment: 1) refraining or resigning from membership in a labor organization; 2) becoming or remaining a member of a labor organization; 3) paying dues to a labor organization; or 4) paying a third party amounts in place of dues to a labor organization.
- Reinstate the requirements of prevailing wage at both the state and local level.
- Establish collective bargaining rights for state and local government front-line workers and their bargaining units to provide workers the opportunity to negotiate together.
- Eliminate the annual recertification requirement for state and local government bargaining units, as well as the provision that approval by a majority of bargaining unit members is required to certify.

Wisconsin Arts Board Grants: The Governor's budget provides \$250,000 GPR in one-time funds to the Wisconsin Arts board for grants to businesses and local governments to provide products or services that have an artistic, cultural or aesthetic content; promote job creation; enhance economic development; promote arts education; and incorporate workforce training and development.

Domestic Partnership: The Governor's budget reinstates domestic partnership benefits for all state and local government employee insurance programs administered by the Department of Employee Trust Funds. These benefits were eliminated as part of the 2017-19 state budget.

Redistricting: The Governor's budget requires that the Legislature take up maps drawn by the People's Maps Commission and that all records on redistricting by the legislature be retained for ten years.

HEALTH AND HUMAN SERVICES

Department of Health Services (DHS)

Medicaid Expansion: The Governor's budget expands Medicaid under the federal Affordable Care Act by covering all low-income Wisconsin residents who earn incomes between 0 percent and 138 percent of the federal poverty level.

Medicaid Investment: The Governor's budget:

- Provides \$26 million to expand Medicaid benefits to include community health worker services, group physical therapy, doula services, a new psychosocial rehabilitation benefit (will serve medium acuity individuals and services could be provided by noncounty providers), room and board costs for residential substance use disorder treatment, and acupuncture services.
- Provides \$88 million in rate increases for speech-language pathology, audiology, Medication-Assisted Treatment (also expanding availability in areas of the state with

unmet needs through initiatives such as additional treatment centers and mobile providers), suicide treatment and prevention services, autism treatment, and emergency physicians.

Repeal of BadgerCare Reform: The Governor’s budget recommends repealing the childless adult demonstration project under the Medicaid program. The budget also repeals work requirements, premium payments, health risk assessment, and copayments for nonemergency use of an emergency room.

FoodShare Work Requirement Repeal: The Governor’s budget repeals the work requirement for able-bodied adults participating in the FoodShare program.

FSET Drug Screening Requirement Repeal: The Governor’s budget repeals the drug screening, testing and treatment requirement for able-bodied adults without dependents participating in the FSET program.

Postpartum Medicaid: The Governor’s budget seeks a waiver from the federal CMS to extend the postpartum Medicaid eligibility for women receiving coverage through CHIP up to 306 percent of the FPL. The waiver will extend eligibility from approximately two months postpartum to 12 months postpartum.

State Administered Public Option Health Plan: The Governor’s budget invests \$1.8 million to fund the development of a state-administered public option health plan to be offered no later than 2025 or 2022 if the federal Affordable Care Act is no longer enforceable.

Health Disparities: The Governor’s budget:

- Creates a Medicaid community health benefit that invests \$25 million for nonmedical services to reduce and prevent health disparities that result from economic and social determinants of health. Services include housing referrals, nutritional mentoring, stress management, and other services that would positively impact an individual’s economic and social condition.
- Address health disparities in Wisconsin by strategically investing in health equity initiatives, including grants for community organizations and local public health departments to implement health equity action plans. The five initiatives included as part of the plan are funded with \$10,166,200 in FY22 and \$25,726,100 in FY23.

Public Health: The Governor’s budget provides \$14 million for the following communicable disease items:

- 23.0 FTE GPR positions for DHS’ Bureau of Communicable Diseases to sustain the state’s COVID-19 response and be prepared to respond to future communicable disease outbreaks.
- 3.0 FTE GPR positions to create a communicable disease harm reduction strike team.
- 2.0 FTE GPR positions to create a data analytics and predictive modeling team in the Office of Health Informatics.
- Grant funding for local and tribal public health departments to support communicable disease control and prevention activities (\$5 million annually).

Lead Poisoning: The Governor's budget:

- Provides additional funding for lead screening and outreach grants.
- Provides ongoing funding for the Windows Plus Program.
- Provides ongoing funding for the Lead Safe Homes Program.
- Expands Birth to 3 services to additional children that are lead poisoned (lowers the blood lead level criteria).

These initiatives are funded with \$4,311,800 in FY22 and \$7,704,800 in FY23.

Tobacco and Vapor Products: The Governor's budget:

- Increases the age to purchase tobacco and vapor products from age 18 to 21.
- Prohibits the use of a vapor product indoors.
- Prohibits the use of a vapor product on school grounds.
- Provides \$2 million to fund a public health campaign related to tobacco and vapor product use.

Income Maintenance: The Governor's budget adjusts funding to reflect a reestimate of the caseload and updated program requirements for the income maintenance consortia: \$3,613,200 GPR/FED in FY22 and \$5,292,400 GPR/FED in FY23.

•

FoodShare Healthy Eating Pilot: The Governor's budget provides \$425,000 GPR in each year to implement a Healthy Eating Incentives Pilot Program that will provide up to 2,000 FoodShare households with discounts on fresh produce and other health food options.

Children's Long-Term Support Waiver Program: The Governor's budget ensures every child in need of long-term supports receives the services they require.

Mental Health Services: The Governor's budget:

- Provides \$12.3 million GPR in FY23 to establish up to two regional crisis response centers, with each offering a crisis urgent care and observation center, a 15-bed crisis stabilization facility and at least two inpatient psychiatric beds, to improve the crisis response system, expand crisis bed access, and alleviate the need for long distance emergency detention transportation. These centers would assume custody of emergency detention cases and conduct medical clearances. The budget supports 2.0 FTE GPR human services program coordinator positions to develop and evaluate the centers on an ongoing basis.
- Provides \$5 million GPR in FY23 to establish five crisis stabilization facilities across the state for adults seeking voluntary crisis treatment. Each facility would offer up to 16 crisis stabilization beds.
- Expands bed tracking capabilities by tracking inpatient psychiatric, crisis response, and peer-respite beds and making this data openly available to all entities involved in identifying placement options.
- Provides \$1.2 million GPR in each year to support the staffing needs of county crisis programs and peer-run respite centers for their telephone services that provide aid to individuals in crisis.

- Creates a \$1.9 million GPR grant in FY23 to establish a behavioral health treatment program for those who are deaf, hard of hearing, or deaf-blind.
- Creates a \$1.25 million GPR grant in each year for municipalities and counties to establish behavioral health and police collaboration programs to increase behavioral health professional involvement in emergency response situations.
- Provides \$375,000 GPR in each year for additional crisis intervention trainings to local law enforcement.
- Provides \$850,000 GPR in each year to expand Milwaukee County's Mobile Crisis Team.
- Provides funding to implement a forensic assertive community treatment program, which is intended to be an intervention that bridges the behavioral health and criminal justice systems.
- Provides 7.0 FTE GPR positions to expand the Veterans Outreach and Recovery Program.
- Provides \$100,000 annually to promote suicide prevention and awareness in veteran communities by conducting improved outreach to traditionally underserved veteran populations.
- Provides \$280,000 GPR in each year of the biennium to create a program that expands the capacity of behavioral crisis lines that provide an alternative to 911 for nonemergency behavioral health issues.
- Expands the Child Psychiatry Consultation Program statewide.

Caregiving: The Governor's budget:

- Provides \$40.4 million in FY22 and \$37.4 million in FY23 to fund rate increases for personal care direct care services.
- Creates a nonrefundable individual income tax caregiver credit for qualified expenses incurred by a family caregiver to assist a qualified family member.
- Establishes mandatory initial training requirements for guardians.

Aging and Disability Resource Centers: The Governor's budget invests in Aging and Disability Resource Centers to:

- Expand caregiver support services to address the needs of caregivers of adults with disabilities who are age 19 to 59.
- Expand the tribal aging and disability resources specialist program.
- Expand the tribal disability benefit specialist program.

The budget provides \$2,425,800 in FY22 and \$4,634,500 in FY23.

Dementia Care Specialists: The Governor's budget expands the dementia care specialists program to all aging and disability resource centers - \$1,175,000 in Fy22 and \$2,350,000 in FY23.

Alzheimer's Family Caregiving Support Program: The Governor's budget expands eligibility for the Alzheimer's Family Caregiving Support Program by increasing the income limit from \$48,000 to \$55,000 and providing \$1 million during the biennium for the program.

Nursing Home Rate Increases: The Governor’s budget provides \$78.3 million in FY22 (11.5 percent increase) and \$163.7 million in FY23 (11.7 percent increase) for a rate increase for nursing homes, of which \$40.4 million in FY22 and \$37.4 million in FY23 is targeted to the direct care workforce. The budget also amends the rate-setting process for acuity-specific billing rather than using resource utilization groupings. Of this rate increase, \$77.8 million over the biennium must be invested in direct care staff in nursing homes.

Department of Children and Families (DCF)

Children and Family Aids: The Governor’s budget increases funding for Children and Family Aids by \$10 million beginning in CY22, appropriating \$15 million GPR over the biennium to provide additional support to the child welfare system.

Child Welfare New Worker Training: The Governor’s budget provides \$1,000,000 in FY22 and \$500,000 in FY23 to design and support a new training program for child welfare workers to improve preparedness and reduce the time that workers are trained.

Family First Prevention Services Act: The Governor’s budget creates an in-home prevention services program:

- Includes \$3,870,300 GPR and \$2,084,100 federal IV-E in each fiscal year to create a full prevention-service network of evidence-based service providers statewide, including provider training, travel costs, licensing, and certification, and incentive supplements for rural areas.
- Includes an additional \$4,613,000 GPR and \$1,575,000 IV-E in each fiscal year for counties to use for direct family support services that are most directly and immediately needed to prevent children from being removed from their homes. These services will include support mentors, respite care, or rental assistance.
- Provides \$130,000 GPR and \$70,000 IV-E in each year to provide training and technical assistance to local child welfare agency staff to shift practices which currently focus on child removal toward prevention.

Foster Care and Kinship Care Rate Increases: The Governor’s budget increases foster care age-based rates by 2.5 percent in CY22 and an additional 2.5 percent in CY23. The budget also includes an 18 percent increase to foster care level 1 and kinship care rates from \$254 to \$300 per month, beginning in CY22.

Age Group	CY21 Base Rate	CY22 Rate	CY23 Rate
Kinship Care	\$254	\$300	\$300
Foster Care Level 1	\$254	\$300	\$300
Foster Care Ages 0-4	\$420	\$431	\$442
Foster Care Ages 5-11	\$460	\$472	\$484
Foster Care Ages 12-14	\$522	\$535	\$548
Foster Care Ages 15+	\$545	\$559	\$573

Independent Living: The Governor's budget extends Independent Living services to teenagers who have been in a court-ordered qualifying placement for at least six months after the age of 16, regardless of at which age and from which placement type they exit their order. The budget also increases the maximum age for services from 21 to 23.

Driver Education for Youth in Foster Care: The Governor's budget includes funding to help teenagers who are in the foster care system pay for driver education classes.

Child Support: The Governor's budget increases funding by \$4,000,000 GPR and \$7,764,700 FED in each fiscal year to child support agencies to improve collection of delinquent child support in the state.

Child Care: The Governor's budget:

- Creates the Child Care Strong program to increase quality, affordable, and accessible child care for all Wisconsin children by annually providing \$53,016,400 GPR and repurposing \$17,637,000 TANF by delinking YoungStar incentive payments to providers from Shares authorizations.
- Provides \$500,000 TANF in each fiscal year to expand the REWARD program.
- Includes \$1,327,200 TANF in FY22 and \$1,963,900 TANF in FY23 for early social emotional training and technical assistance.

Youth Justice

Youth Justice: The Governor's budget:

- Creates a sentence adjustment procedure for youth under 18 who commit a crime.
- Eliminates the serious juvenile offender program in DOC and moves responsibility for caring for future young offenders to the counties (see funding under youth aids). Replaces the SJOP with an extended jurisdiction juvenile blended sentencing model. The new model would allow the court to sentence an individual to both a juvenile disposition and an adult disposition.
- Eliminates life without the possibility of extended supervision for juvenile offenders.
- Limits the use of detention sanctions or holds.
- Prohibits the use of restraints on anyone under the age of 18 when appearing in court in most cases.
- Eliminates automatic original adult court jurisdiction for all youth under the age of 18.
- Modifies the conditions under which a youth under the age of 18 may be waived into adult court.
- Increases the age of delinquency from 10 years of age to 12 years of age.
- Enhances youth justice services by creating 3.0 FTE GPR positions, program improvements, grants for community-based and out-of-home care services, and budgets \$417,000 GPR in FY22 and \$11,087,200 GPR in FY23 for these purposes.
- Provides statewide youth justice foundational training, (using PDS) quality assurance training, and best practice research and technical assistance that will provide a baseline of knowledge and quality for youth justice agencies throughout the state.

- Creates a new community grant program for counties to significantly elevate their case management practices and use of intensive, evidence-based treatment services.
- Creates a new residential care grant program for out-of-home care providers – one congregate care setting and one or more treatment foster home providers – to provide intensive services specifically for justice-involved youth who require treatment services in an out-of-home setting.
- Includes \$8,859,100 GPR in FY23 for a new pilot community-based services grant program whose targeted population will be moderate- and high-risk youth, as determined by the YASI risk assessment tool. Counties will select an evidence-based treatment model and partner with community clinical service providers trained in the treatment model.
- Includes funding for two types of residential services grants to provide alternatives to youth entering the deepest end of the juvenile justice system. The first is \$1,268,800 GPR in FY23 for a residential care facility to help keep kids in their community. The target population would be moderate- to high-risk delinquent male youth from anywhere in the state with aggressive behaviors and/or sexual offenses.
- Includes \$250,000 GPR in FY23 for a child placing agency grant that would help find treatment foster care placements for medium-to high-risk delinquent youth who require out-of-home care placement, but are particularly unsuited for a congregate care setting, such as those who have experienced sex trafficking. Providers would be required to provide or coordinate provision of clinical treatment services either in the home or the community.
- Eliminates state-run Type 1 facilities.
- Allows both the state and counties to operate Secured Residential Centers for Children and Youth.
- Closes Lincoln Hills and Copper lake as soon as all juveniles have been transferred to a suitable replacement facility.
- Reduces the use of detention for juvenile offenders who commit minor offenses. Eliminates placement of a juvenile offender in a juvenile detention facility as a sanction or for short-term detention unless the juvenile court finds that the juvenile poses a threat to public safety and the underlying offense would be an offense if committed by an adult.

17-Year-Olds: The Governor’s budget:

- Raises the age of adult jurisdiction to 18 years of age.
- Creates a new sum sufficient appropriation and provides \$10 million GPR in each fiscal year to reimburse counties for the increased cost associated with raising the age.

Youth Aids: The Governor’s budget:

- Modifies the youth justice statutes and appropriations to provide more flexibility in allocating youth aids funding and enhancing systems improvements.
- Authorizes DCF to distribute an additional \$5,327,500 GPR in FY22 and \$13,529,700 in FY23 to ensure counties can meet an increase in youth offender services that arise from the elimination of the Serious Juvenile Offender Program.

Other

Workforce Development: The Governor’s budget:

- Provides \$8 million GPR for pandemic recovery grants to local workforce development boards to fund local training programs to return workers to the labor market – funding can be subgranted to local businesses or organizations for pandemic relief.
- Provides \$200,000 GPR for local workforce development boards to hold hiring events throughout the state for health care-related careers and career exploration courses to increase interest in health care employment.

Department of Safety and Professional Services: The Governor’s budget provides \$900,000 PR in FY22 and \$1,269,200 PR in FY23 and 14.0 FTE permanent PR positions and 2.0 FTE project PR positions at the Department of Safety and Professional Services to investigate professional regulations violations and decreasing processing times for professional licenses. In addition, the Governor’s budget increases expenditure authority in the department’s LTE budget by \$100,000 PR in each year of the biennium.

Equity and Opportunity: The Governor’s budget establishes “Wisconsin for All” Diversity, Equity, and Inclusion initiatives that promote and advance equity within all of state government and state programs.

- Creates a cabinet-level chief equity officer within the Department of Administration and agency equity officers at 18 state agencies and commissions.
- Establish and provide funding for a Governor’s Fellowship Program, Governor’s Progress Summit, and a state-sponsored annual diversity, equity, and inclusion conference for state and local government employers.
- Create three equity grant programs to provide funding for public, private, and nonprofit entities to advance equity initiatives. (\$50 million to DOA, DCF, DHS; GPR funded in FY22 and funded with funds from the new Community Reinvestment Fund in FY23 and beyond).

JUDICIAL AND PUBLIC SAFETY

911 and Public Safety Answering Points (PSAPs): The Governor’s budget includes funds to support PSAPs and the need to upgrade equipment at the local level. The Department of Military Affairs originally requested \$2.5 million to support a state grant program. The Governor included in his budget \$7.5 million starting in FY23 for PSAP grants which can be used for equipment and software expenses as well as training costs.

Further, the Governor is supporting the ongoing work of DMA to create the emergency services IP network (ESInet) which is critical in the advancement of 911 from an analog system to a digital platform. The Governor provides \$1.7 million in FY22 and \$9.8 million in FY23. Also as part of the DMA request, the Governor provided \$3 million for county grants in FY23 for geographic information systems (GIS) data grants.

WISCOM: The Governor’s budget includes \$6.5 million GPR for the design and implementation of a new statewide interoperable communications system which is a shared land mobile radio system.

Treatment Alternatives and Diversion (TAD): The Governor’s budget includes an additional \$15 million GPR for TAD in FY 2022-23 for expansion of the program.

Opening Avenues to Reentry Success (OARS): The Governor’s budget includes \$2.2 million GPR in FY22 and \$3 million in FY23 for the expansion of the OARS program. This program was expanded in the previous budget and is currently operating in 51 counties.

District Attorneys: The Governor’s budget includes the option for counties with a population between 200,000 and 750,000 to appoint up to four deputy district attorneys.

Private Attorney Bar Rate: The Governor’s budget includes the recommendation to index the private bar rate to the consumer price index beginning in FY23. The rate would adjust biennially by a percentage equal to the average consumer price index over the preceding 12-month period.

Circuit Courts: The Governor’s budget provides expenditure and position authority for four circuit court branches beginning August 1, 2021 and four branches beginning August 1, 2022. 2019 Wisconsin Act 184 provided 12 additional circuit court branches to be allocated by the director of state courts.

TAXATION AND FINANCE

Local Option Sales Tax: The Governor’s budget allows counties to increase their sales tax by 0.5% with approval from voters via referendum. The 0.5% sales tax is in addition to a county’s current 0.5% sales tax authority via ordinance.

Shared Revenue: The Governor’s budget provides successive 2 percent increases in funding for the county and municipal aid program to take effect in 2021 and again in 2022.

Levy Limits: The Governor’s budget provides counties with a 2 percent minimum growth factor for levy limit purposes. Currently, county levy limits are tied to the change in property values due to net new construction.

Transferred Services/Levy Limit Adjustment: The Governor’s budget eliminates the negative adjustment to county and municipal levy limits for services transferred from one local government to another local government.

Regional Planning Commissions/Levy Limit Adjustment: The Governor’s budget exempts amounts levied for regional planning commissions from the county’s applicable levy limit.

Cross Boundary Transit Corridors: The Governor’s budget provides a levy limit exemption for cross-boundary transit corridors that meet specified statutory criteria.

Dark Stores Assessments: The Governor’s budget implements reforms to assessment practices to close the dark store assessment loophole.

TIF Districts: The Governor's budget modifies TIF law by lifting the current law limitation on what share of a mixed-use district's area can be used for newly-platted residential developments from 35 percent to 60 percent if the additional 25 percent is comprised of workforce housing.

Debt Issuance: The Governor's budget allows counties to issue debt to replace revenue lost due to a disaster or public health emergency declared by the Governor or the county board itself.

Sales Tax Exemptions: The Governor's budget provides a sales tax exemption for landscape planning and counseling services that pertain to the restoration, reclamation, or revitalization of prairie, savanna, or wetlands if such services are provided under a separate fee distinct from other services (estimated tax reduction is \$500,000 over the biennium). The Governor's budget also provides a sales tax exemption for diapers (estimated tax reduction is \$16.1 million over the biennium), property used primarily to store renewable energy (estimated tax reduction is \$8.2 million over the biennium), and sweetened dried fruit (estimated tax reduction is \$900,000 over the biennium). The Governor's budget repeals the current law sales tax exemptions for game birds (estimated tax increase of \$350,000 over the biennium) and farm-raised deer (estimated tax increase of \$210,000 over the biennium).

Tribal Land Transfers: The Governor's budget allows the sale of certain county property acquired due to delinquent taxes and the sale of county forest land be excluded from public sale requirements if the sale is to a federally recognized tribe or band.

County Forest Acreage Share Payments: The Governor's budget increases the county forest acreage share payments from \$0.30 per acre to \$0.63 per acre.

TRANSPORTATION AND PUBLIC WORKS

General Transportation Aids (GTA): The Governor's budget increases county GTA from \$122,203,200 in the 2019-21 budget cycle to \$124,647,266 in FY21 and to \$127,140,211 in FY22. This amounts to a 2 percent increase in GTA payments in each year of the biennium.

General Transportation Aids (Late Submission): The Governor's budget recommends reducing the penalty for the late submission of the required expenditure data for GTA calculations from the local and county governments to not more than \$100 per day.

Routine Maintenance Agreements: The Governor's budget maintains funding and preserves recent increases for Routine Maintenance of the State Trunk Highway System (STH) performed by counties. The Governor's budget increases funding within the state highway maintenance program to account for the increasing cost of road salt. An additional \$12,510,900 is provided in FY22 and 13,118,100 in FY23.

General Transit Aids: The Governor's budget increases annual funding for General Transit Aids by 2.5 percent, both in the first and second year of the biennium. Mass Transit Systems with operating expenses of:

- A. Greater than \$80,000,000: Funding is increased in the first year of the biennium from \$70,613,300 to \$72,378,633 in the first year of the biennium and to \$74,188,098 in the second year of the biennium.
- B. Between \$20,000,000 and \$80,000,000: Funding is increased from \$18,554,800 to \$19,018,670 the first year of the biennium and to \$19,494,136 in the second year of the biennium.
- C. Less than \$20,000,000 and a serving population of at least 50,000: Funding is increased from \$26,935,400 to \$27,608,785 in the first year of the biennium and \$28,299,004 in the second year of the biennium.
- D. Mass Transit Systems serving an area with a population of less than 50,000: Funding is increased from \$5,707,800 to \$5,850,495 in the first year of the budget and 5,996,757 in the second year of the biennium.

Local Bridge Improvement Assistance: The Governor's budget maintains current funding for the Local Bridge Improvement Program, resulting in \$22.9 million in both years of the biennium.

Local Road Improvement Program (LRIP): The Governor's budget maintains current funding levels for the Local Road Improvement Program (LRIP). Funding for the county component of LRIP, the County Highway Improvement Program (CHIP), (Discretionary Program funding) will be funded at \$5,569,400 in FY21 and \$5,688,400 in FY22.

Majors Projects: The Governor's budget provides \$565.6 million in total funding for the Major Highway Development Program in the 2021-23 biennium. The total funding level for the program was \$558 million in the 2019-21 biennium. This is a funding increase for the program of approximately \$7.6 million.

State Highway Rehabilitation Funding: The Governor's budget provides an increase in the program of approximately \$66.6 million in 2021-23. The program has been funded at \$1.7 billion.

Project Labor Agreements (PLA): The Governor's budget restores a local unit of government's ability to require that a bidder enter into a Project Labor Agreement (PLA).

State Prevailing Wage Requirements: The Governor's budget restores prevailing wage requirements for projects using state dollars.

Local Government Use of Eminent Domain Authority for Bicycle and Pedestrian Facilities: The Governor's budget restores the ability of local governments to use eminent domain authority for the installation of bike and pedestrian paths.

Local Multimodal Transportation Program: The Governor's budget provides \$75 million for local multimodal transportation projects to address the significant need for supplemental

infrastructure funding as evidenced by the \$1.47 billion in projects submitted by local governments under a similar program in the 2019-21 biennium.

Local Roads for Critical Infrastructure Pilot Program: The Governor's budget provides \$15 million in bonding for a Local Roads for Critical Infrastructure pilot program to combat the increased frequency of roadway destruction from flooding events.

###

The State of Marathon County Disc Golf 2021

Where We Were/Are

A competitive professional tournament player. A licensed course designer. An organizer/promoter of local disc golf leagues, tournaments and charitable benefits. The founder of Wausau Area Disc Golf Enthusiasts (WADGE) in the early 2000's. A semi-retired educator. That's who I am. Although many area folks have been active in several of these roles, I am the only one around Wausau who's done (and continues to do) all of them. By no means am I suggesting I have the singular answer to all things disc golf in the Wausau area. Yet I truly am the singular one with a proven local history of actively playing, course designing, promoting and growing the game of disc golf in schools and for players of all levels.

So why this detailed "State of Marathon County Disc Golf?" Believe me, it's not to toot my own horn. Instead, it's to inform, educate and help you, your Parks Commission and your new administrative directors to understand where local golf has been, where it is currently and where it might go. Not knowing the tenured history of your board members, my hope is to provide them some perspective for planning, prioritizing and budgeting.

Memorial Park's popular 9-hole recreational disc golf course (DGC) was established in 2002 and was the 42nd course installed in Wisconsin according to the Wisconsin Disc Sports Association archives. I believe Dan Fiorenza was the driver of this project. It remains the most common course for beginning players to learn the game, but is not everyone's favorite with disc-eating water hazards throughout the layout. I call it the "hardest beginner course" around.

Big Eau Pleine County Park championship-level DGC was born out of the Envision Marathon County public meetings in the late 90's after Mosinee's Kathy and Mike McElwain explained the need for more area courses in the rapidly growing sport. With WMCP's approval, Randy Schukar led the professional design with myself as assistant designer. Its first 9 holes went in the ground in 2007, making BEP the 108th course in n Wisconsin. The second 9 holes went in by 2009 and a 19th hole was added using the practice basket in 2018.

WADGE donated all the baskets, built all the tee pads/signs and regularly schedules work days to clean up deadfall and tame the rough. We donated \$3600 to purchase concrete for permanent tee pads to replace the rubber matting that has been used as a teeing surface. That project probably would have been completed had there been no pandemic. It remains the single biggest current need at the course. Gravel backfilling around the finished pads also needs completion to prevent trip hazards.

BEP has been a pay-to-play course for 3 years and now provides a steady revenue stream to offset maintenance costs. It also hosts a Wisconsin Disc Golf Tour event every summer, drawing players from multiple states and topping out at around 140 players over two days of tournament play.

About 12 years ago I designed a 12-hole disc golf course in Weston's Machmueller Park, with emphasis on teaching shot skills and catering to the local neighborhood. It enjoyed huge success until some nearby residents objected to disc golfers too near their properties, and the baskets were pulled. Fortunately, the Weston Parks Commission recognized the popularity of disc golf and had me design an 18-hole layout on their expanded Yellow Banks Park property. It still is very popular for more advanced players to this day, although the entire layout was never finished. WADGE is lobbying for that completion to happen, although it seems Weston's will to build/maintain it properly is lacking.

Wausau School District has short, beginner-level courses on their middle school properties, but they are mostly just baskets scattered about campus. I was recommended as a course designer by a Wausau East wellness educator, but the district chose not to pay for professional design services.

NTC now has a recreational course on its campus as well, albeit not safely nor thoughtfully designed. It is about 3 years old. Seeing how potentially dangerous the layout is to pedestrians, passing/parked cars and even to players themselves, I offered to waive my design fees to re-tool the layout into a safer, better planned and more flowing course. They declined my offer. It continues to be popular, but has serious design flaws that invite shots toward roads, directly at buildings/dorms and directly at players on adjacent holes.

The Weston YMCA had a course on their campus for a short while. But with an inexperienced designer doing the layout, it forced players to shoot over parking lots, at private properties and even directly at/over a playground and horse stable. Needless to say, it was not long before the baskets were pulled and moved to the less crowded and safer Y Camp property.

Through my design business, Discover Designs LLC, I just finished a 9-hole layout at Liberty Park in Rib Mountain. It will be installed in the spring, providing another intermediate-level option for disc golfers in the area. Feel free to contact them on how they feel about the project.

Several area private landowners have their own disc golf courses, which are not open to the public without invitation. Given the relatively inexpensive nature of the game, Wisconsin disc golf is poised to continue an almost exponential growth curve. There are now over 200 courses in the state and many in the process of being designed/built. As many ball golf courses continue to struggle financially or fail entirely, disc golf is even being introduced on those properties as well. Disc golf's not a fad-like game; it's inexpensive, easy to learn and it's here to stay.

So that's generally where the Wausau area scene has been and is currently. What I'd like to offer now is a look at what I believe needs to be done to improve disc golf options and course quality.

Where We Need To Go

Let's begin with Memorial Park. It remains a beginner course, with lots of user groups on a small property. It definitely needs new plantings/trees/decorative obstacles, as many of the original crab apple trees have died. Our club offered to pay for new plantings there almost 10 years ago, but the offer was rejected. Otherwise, there are but few features besides the surrounding waterways to challenge players. Its tee signs are old, poorly designed and are dangerously close to players' follow-through motions. The tee pads, parking area, kiosk and garbage receptacles are fine. Recycling bins for glass/plastic/trash would be a nice addition. Modifying or expanding the course is not feasible with the many varied uses of the park.

Three years ago I was gifted 9 DGA baskets, a better quality than the Innova ones originally at the park, and offered to donate them to Wausau Marathon County Parks. I did so in exchange for the old ones with the specific purpose of refurbishing them and funding improvements or new baskets at Big Eau Pleine DGC. Those old baskets are currently being powder coated so we can sell them. More on this later.

The Big Eau Pleine remains the flagship course in the entire area. Standing Rocks DGC in Portage County has more holes and elevation variety, but nowhere else in the area offers the length, availability of camping/boating/biking and multiple tee distances than BEP does. The pay-for-play format is working well, with almost \$7000 in daily green fees collected in 2020. Add in around \$1000 in annual passes sold and another \$1000+ from WADGE's Summer Smackdown tournament (at least in non-pandemic years) and you can see the course is pulling its weight in revenue.

WMCP Staff and I discussed the critical problem of erosion at BEP, mostly on the wooded fairways. There's simply no way to grow grass on heavily trafficked walkways in the dense shade, and unless action is taken soon, the topsoil will all wash away (it's already creating dangerous ruts in the walkways). The simplest solution we devised is building multiple rock diversions on sloped fairways. Without the ability to run a Skidsteer or other machinery at the park, moving the rocks (which are readily available on-site) is not something our club can do. We would need operator time dedicated to spending an entire day moving and positioning the rocks. WADGE would gladly do the hand work to buttress the rocks with gravel, landscape cloth or other material.

Two years ago, WADGE and WMCP's worked together to install concrete tees over what used to be gravel/rubber matting tee pads. The project is about ½ done, as we continue working

with WMCP's on the installation. Our \$3600 donation reflects the club's steadfast commitment to continue improving the course. It needs to be completed soon, as avid golf donors are asking what became of their money earmarked for the pad pour. With mixed results so far, we are re-thinking the pour method, hoping to pour in more a sidewalk-like fashion and finishing the surface with a coarse broom to provide grip.

The course still desperately needs new tee signs, which I designed/built/fundraised for over twelve years ago. The sign posts (and signs themselves) are rotting, unreadable, some are missing and none accurately show the multiple anchor (basket) placements currently offered. On longer, blind holes it's critical to know exactly where the target is, and indicating varied/current positions on the signs is key. I can offer some proven resources for new sign production and would request permission to solicit some new hole sponsorships. If your people have the in-house production capability, that would be ideal.

Last year I asked staff for preliminary approval to elevate the basket on hole 4, which would add a unique challenge to an otherwise rather uninteresting hole. I was told that it could probably be done. We hope it could be designed and built as a pedestal green before our Summer Smackdown tournament in August. We have people ready to help your staff engineer it in a safe, proven and aesthetically pleasing way.

To complete it as a quality course, multiple recycling bins and covered garbage containers should be put at BEP DGC to replace the plastic barrels, which fill with water/snow because they're uncovered. Some also need repositioning to make maintenance easier. I've had multiple offers to donate new course benches, but if you deem recycling stations more important, I might convince those donors to change their minds. It would also be ideal to offer scorecards near the pay tube envelopes, but that is a less important amenity. I already have scorecards available if you want them.

Several years ago, WADGE expressed our hope to expand the BEP DGC onto the land immediately to the east of the current layout and I shared a schematic of the proposed 9 hole expansion. Staff then asked if we could share the preliminary design with CWOOC to see how a proposed addition would impact their current single track trails. We did so on site (I believe with Mark C). He saw no problem with slightly re-routing some trails.

I also offered to waive my professional design services for the expansion, saving WMCP's \$2000-\$3000. The project, however, got but casual mention at the board level and just like other requested BEP DGC improvements, was put on hold until revenue streams were assessed, long-term budgets finalized and all the requested uses of BEP evaluated. After having seen a summary of parks improvements discussions in The City Pages, we were under the assumption that it was at least on your radar screen. I'm not sure that was the case.

Not knowing what projects are on your priority list, WADGE would still like to propose this: establishing a set budget/timetable for layout, site prep, seeding, tee building and signage of an added 9 holes. We would use the rubber pads from the original layout to be tees for the expansion, after which concrete pads would eventually replace them 4-5 years later. The sale of the old Memorial baskets can save WMCP's almost \$3000 of the \$4300+ costs for new matching baskets (players detest having multiple basket brands/styles on the same layout, otherwise we'd use the reconditioned ones). I estimate the entire expansion process to take 1-2 years and be partially funded by the sale of the refurbished baskets.

What you may not realize, though, is the absolutely guaranteed boost this will have for your green fee/camping revenue. Disc Golf Course Review and other online sites already rate BEP as a 4 out of 5, but having 28 holes versus the current 19 would be a magnet-like draw for touring players to make it a destination stop. Players seek courses that offer what few others can, and having that exceptional number of playable holes with camping on-site is a sure winner. It would then easily rate a 4.5 or more. Said addition would easily justify bumping daily fees from \$4 to \$5, seasonal passes from \$30 to \$40 and family seasonal passes from \$60 to \$75.

We realize that this is a big ask, especially with our current national emergency. If you're able to at least preliminarily approve it, however, it makes it far easier for WADGE to help out by fundraising with a specific goal/timeframe in mind. Our hope would be to start site prep in 2023 and have it completed by 2024. The best part is that most of the newly proposed holes would not require much tree-felling at all nor need full mowing, given their location under a leafy canopy. That would greatly reduce operations costs and provide better bang for your buck. Hilly holes might require some rock terraces/diversions as previously proposed for the current layout, but those can be added later. Significant deadfall exists on several holes from recent storms and would need removal.

Beyond BEP, it's still pretty slim disc golf pickings having only Memorial Park DGC in system in Wausau proper. You should know that it's rather odd for a city the size of Wausau to have no 18-hole course in the city limits. Most cities of similar size have 2 or more in-city/nearby courses. And as great as BEP is, the drive time and gas money are more than a lot of people care to expend. That's why we've searched high and low to find a property in the city itself or close by to build another good 18-hole course. From Sunnyvale to the soccer complex and from Nine Mile to Marathon Park, there simply are few established parks that could host a disc golf course without compromising current usage and/or being patently unsafe.

That's why we would strongly urge you to consider potential properties for another course, ideally within the city itself. Bluegill Park could be that very place if the design is done with the current walking paths/playgrounds/fishermen in mind. The Liberty Park course I mentioned above has a lot of similar trails winding through it, but by first administering a community

survey and communicating with neighbors, Rib Mountain found a workable way to include disc golf on the land.

Summary

Realizing that these are both only our club's aspirations, my own thoughts and a lot for you to digest, please give consideration to them. Area disc golfers are grateful for what WMCP's has already provided us, but we are hopeful for even more and willing to help both with labor and financial backing. If I can answer any questions or attend a meeting live/on Zoom, I'd be glad to. Sorry for my wordiness ... that's what we teachers do!

Pete Hoover

WADGE President

Discover Designs Owner